

Geo. Adoff. 1955. 27/4
(Sent by the Lord Chamberlain's office, 1950)

For His Majesty's
use at the Court
of France

1825

2 1/2 Oval Table Dishes ✓

			Of	diets	
N ^o 1.	A 2 1/2 Inch Oval Table Dish	116	6	✓	
" 2.	A D ^o - D ^o	114	9	✓	
" 3.	A 22 Inch - do.	102	18	✓	
" 4.	A do. - do.	101	6	✓	
" 5.	A 20 In - do.	76	16	✓	
" 6.	A do. - do.	74	18	✓	
" 7.	A do. - do.	76	11	✓	
" 8.	A do. - do.	69		✓	
" 9.	A 19 In - do.	68	1	✓	
" 10.	A do. - do.	71	1	✓	
" 11.	A do. - do.	65		✓	
" 12.	A do. - do.	67		✓	
" 13.	A 16 In - do.	48	6	✓	
" 14.	A do. - do.	47	14	✓	
" 15.	A do. - do.	45	13	✓	
" 16.	A do. - do.	47	18	✓	
" 17.	A do. - do.	48	6	✓	
" 18.	A do. - do.	47	16	✓	

Forward Of 1288 19

0/2 diets

Brothford 1288 19

- N^o 19, A 16 In Oval Table Dish ✓ 47 8 ✓
- " 20, A do - - do ✓ 47 19 ✓
- " 21, A do - - do ✓ 47 19 ✓
- " 22, A do - - do ✓ 47 9 ✓
- " 23, A do - - do ✓ 48 1 ✓
- " 24, A do - - do ✓ 47 5 ✓

16 Oval Shaped Entrée
Dishes & 8 covers

- N^o 1, A do - - do ✓ 68 14 ✓
- " 2, A do - - do ✓ 68 9 ✓
- " 3, A do - - 9 78 do ✓ 67 15 ✓
- " 4, A do - - 5 do ✓ 68 14 ✓
- " 5, A do - - 7 do ✓ 74 7 ✓
- " 6, A do - - do ✓ 69 15 ✓
- " 7, A do - - do ✓ 69 - ✓
- " 8, A do - - do ✓ 70 13 ✓
- N^o 1 Oval deep Dish only ✓ 32 12 ✓
- " 2 do - - 9 do ✓ 31 3 ✓
- " 3 do - - 8 do ✓ 32 8 ✓

Forward 0/2 2228 10

		£	s	d
Bretford		22	28	10
No 4	oval entrée Dish only	✓	31	9 ✓
" 5	D ^o D ^o	✓	30	13 ✓
" 6	D ^o D ^o	✓	31	9 ✓
" 7	D ^o D ^o	✓	30	14 ✓
" 8	D ^o D ^o	✓	32	7 ✓

16 Round shaped Entré
Dishes & 8 covers

No 1.	A D ^o D ^o	✓	72	10 ✓
" 2	D ^o D ^o	✓	73	14 ✓
" 3	D ^o D ^o	✓	74	✓
" 4	D ^o D ^o	✓	75	3 ✓
" 5	D ^o D ^o	✓	75	7 ✓
" 6	D ^o D ^o	✓	75	3 ✓
" 7	D ^o D ^o	✓	75	6 ✓
" 8	D ^o D ^o	✓	73	16 ✓
No 1.	Round ^{deep} Entré Dish only	✓	32	16 ✓
" 2	D ^o D ^o	✓	36	2 ✓
" 3	D ^o D ^o	✓	34	14 ✓
" 4	D ^o D ^o	✓	34	14 ✓

Forward £ 3118 7

			Pls dots
	Butford		3118 7
No 5	Round	Entire disk	✓ 33 ✓
" 6	Do.	Do.	✓ 33 19 ✓
" 7	Do.	Do.	✓ 34 9 ✓
" 8	Do.	Do.	✓ 34 10 ✓

144 Table Plates ✓

No 1	Do.	Do.	✓ 18 11 ✓
" 2	Do.	Do.	✓ 17 8 ✓
" 3	Do	307 14	Do. ✓ 17 10 ✓
" 4	Do.	43	Do. ✓ 17 5 ✓
" 5	Do.		Do. ✓ 18 13 ✓
" 6	Do.		Do. ✓ 18 10 ✓
" 7	Do.		Do. ✓ 18 2 ✓
" 8	Do.		Do. ✓ 18 7 ✓
" 9	Do.		Do. ✓ 17 11 ✓
" 10	Do.		Do. ✓ 18 7 ✓
" 11	Do.		Do. ✓ 17 3 ✓
" 12	Do.		Do. ✓ 18 7 ✓
" 13	Do.		Do. ✓ 18 17 ✓
" 14	Do.		Do. ✓ 18 19 ✓

Forw^d 0 3507 15

			Ob	dists	
	Brotford		3507	15	
No 15	Table Plate		✓	17	13 ✓
" 16	Do	Do	✓	17	12 ✓
" 17	Do	Do	✓	17	12 ✓
" 18	Do	Do	✓	17	16 ✓
" 19	Do	Do	✓	18	1 ✓
" 20	Do	Do	✓	17	14 ✓
" 21	Do	Do	✓	17	6 ✓
" 22	Do	Do	✓	16	18 ✓
" 23	Do	Do	✓	17	17 ✓
" 24	Do	Do	✓	18	✓
" 25	Do	Do	✓	19	6 ✓
" 26	Do	Do	✓	18	5 ✓
" 27	Do	Do	✓	17	13 ✓
" 28	Do	Do	✓	17	14 ✓
" 29	Do	Do	✓	17	1 ✓
" 30	Do	Do	✓	19	✓
" 31	Do	Do	✓	17	17 ✓
" 32	Do	Do	✓	17	19 ✓
" 33	Do	Do	✓	18	16 ✓
" 34	Do	Do	✓	18	8 ✓
Forward			Ob	3866	3

			oz	dwt
Profforw.			3866	3
No 35.	Table Plate		✓ 18	5 ✓
36.	Do.	Do.	✓ 17	12 ✓
37	Do.	Do.	✓ 19	- ✓
38	Do.	Do.	✓ 19	1 ✓
39	Do.	Do.	✓ 18	3 ✓
40	Do.	Do.	✓ 18	6 ✓
41	Do.	Do.	✓ 19	8 ✓
42	Do.	Do.	✓ 18	1 ✓
43.	Do.	Do.	✓ 18	2 ✓
44	Do.	Do.	✓ 17	11 ✓
45	Do.	Do.	✓ 17	10 ✓
46	Do.	Do.	✓ 18	5 ✓
47	Do.	Do.	✓ 18	13 ✓
48	Do.	Do.	✓ 18	13 ✓
49	Do.	Do.	✓ 18	11 ✓
50	Do.	Do.	✓ 19	3 ✓
51	Do.	Do.	✓ 17	16 ✓
52	Do.	Do.	✓ 17	2 ✓
53	Do.	Do.	✓ 17	17 ✓
54	Do.	Do.	✓ 18	- ✓
Total			4231	9

			0 $\frac{1}{2}$ dwt
	Brookford		4231 2
N ^o 55	Table Plate		✓ 18 9 ✓
" 56	Do	Do	✓ 17 12 ✓
" 57	Do	Do	✓ 18 13 ✓
" 58	Do	Do	✓ 17 17 ✓
" 59	Do	Do	✓ 17 4 ✓
" 60	Do	Do	✓ 17 18 ✓
" 61	Do	Do	✓ 18 11 ✓
" 62	Do	Do	✓ 18 15 ✓
" 63	Do	Do	✓ 18 19 ✓
" 64	Do	Do	✓ 18 6 ✓
" 65	Do	Do	✓ 17 4 ✓
" 66	Do	Do	✓ 17 13 ✓
" 67	Do	Do	✓ 17 10 ✓
" 68	Do	Do	✓ 19 6 ✓
" 69	Do	Do	✓ 18 14 ✓
" 70	Do	Do	✓ 19 4 ✓
" 71	Do	Do	✓ 18 19 ✓
" 72	Do	Do	✓ 18 10 ✓
" 73	Do	Do	✓ 17 14 ✓
" 74	Do	Do	✓ 17 18 ✓
Found			0 $\frac{1}{2}$ 4595 18

			<i>0/6</i>	<i>dwt</i>	<i>sts</i>
	Backward		45	95	18
No 75.	Table Plate		✓	18	7 ✓
" 76.	Do Do		✓	17	18 ✓
" 77.	Do Do		✓	17	7 ✓
" 78.	Do Do		✓	18	7 ✓
" 79.	Do Do		✓	17	14 ✓
" 80.	Do Do		✓	17	7 ✓
" 81.	Do Do		✓	18	13 ✓
" 82.	Do Do		✓	17	5 ✓
" 83.	Do Do		✓	17	17 ✓
" 84.	Do Do		✓	18	✓
" 85.	Do Do		✓	18	11 ✓
" 86.	Do Do		✓	18	1 ✓
" 87.	Do Do		✓	18	1 ✓
" 88.	Do Do		✓	17	18 ✓
" 89.	Do Do		✓	18	11 ✓
" 90.	Do Do		✓	18	10 ✓
" 91.	Do Do		✓	17	15 ✓
" 92.	Do Do		✓	17	17 ✓
" 93.	Do Do		✓	18	1 ✓
" 94.	Do Do		✓	17	17 ✓
	Forward		0/6	49	55 15

			£	s	d	cts
	Broffow.		4	9	5	15
N ^o 95.	Table Plate		✓	18	4	✓
" 96.	Do	Do	✓	18	6	✓
" 97.	Do	Do	✓	18	12	✓
" 98.	Do	Do	✓	18	6	✓
" 99.	Do	Do	✓	18	8	✓
" 100.	Do	Do	✓	18	13	✓
" 101.	Do	Do	✓	17	16	✓
" 102.	Do	Do	✓	18	10	✓
" 103.	Do	Do	✓	18	2	✓
" 104.	Do	Do	✓	17	16	✓
" 105.	Do	Do	✓	18	16	✓
" 106.	Do	Do	✓	18	10	✓
" 107.	Do	Do	✓	17	16	✓
" 108.	Do	Do	✓	17	13	✓
" 109.	Do	Do	✓	17	14	✓
" 110.	Do	Do	✓	17	15	✓
" 111.	Do	Do	✓	17	16	✓
" 112.	Do	Do	✓	17	14	✓
" 113.	Do	Do	✓	17	18	✓
" 114.	Do	Do	✓	17	17	✓
Forward			£	5	3	17

			R ^{ts} d ^{cts}
Brothforward			531717
N ^o 115	Table	Plate	✓ 18 4 ✓
" 116	D ^o	D ^o	✓ 17 10 ✓
" 117	D ^o	D ^o	✓ 19 2 ✓
" 118	D ^o	D ^o	✓ 18 8 ✓
" 119	D ^o	D ^o	✓ 17 17 ✓
" 120	D ^o	D ^o	✓ 18 2 ✓
" 121	D ^o	D ^o	✓ 17 19 ✓
" 122	D ^o	D ^o	✓ 18 13 ✓
" 123	D ^o	D ^o	✓ 17 12 ✓
" 124	D ^o	D ^o	✓ 18 2 ✓
" 125	D ^o	D ^o	✓ 17 14 ✓
" 126	D ^o	D ^o	✓ 17 19 ✓
" 127	D ^o	D ^o	✓ 18 7 ✓
" 128	D ^o	D ^o	✓ 18 2 ✓
" 129	D ^o	D ^o	✓ 18 3 ✓
" 130	D ^o	D ^o	✓ 18 5 ✓
" 131	D ^o	D ^o	✓ 16 19 ✓
" 132	D ^o	D ^o	✓ 18 1 ✓
" 133	D ^o	D ^o	✓ 18 7 ✓
" 134	D ^o	D ^o	✓ 17 10 ✓
Forward			R ^{ts} 5678 13

£s. dcts

Brotford		5678 13
No 135	Table Plate	✓ 18 1 ✓
" 136	Do Do	✓ 17 18 ✓
" 137	Do Do	✓ 17 14 ✓
" 138	Do Do	✓ 17 10 ✓
" 139	Do ⁴ Do	✓ 17 9 ✓
" 140	Do Do	✓ 18 15 ✓
" 141	Do Do	✓ 18 8 ✓
" 142	Do Do	✓ 17 6 ✓
" 143	Do Do	✓ 17 1 ✓
" 144	Do Do	✓ 17 5 ✓

48 Soup Plates ✓

No 1	Soup Plate	✓ 19 17 ✓
" 2	Do Do	✓ 19 18 ✓
" 3	Do Do	✓ 20 6 ✓
" 4	Do Do	✓ 19 15 ✓
" 5	Do Do	✓ 20 6 ✓
" 6	Do Do	✓ 21 10 ✓
" 7	Do Do	✓ 19 13 ✓
" 8	Do Do	✓ 20 6 ✓

Forw'd £6017 11

		No dets
	Brotford	6017 11
No 9.	Soup Plate	✓ 20 14 ✓
" 10.	Do Do	✓ 18 19 ✓
" 11.	Do Do	✓ 20 10 ✓
" 12.	Do Do	✓ 20 7 ✓
" 13.	Do Do	✓ 20 7 ✓
" 14.	Do Do	✓ 20 18 ✓
" 15.	Do Do	✓ 20 2 ✓
" 16.	Do Do	✓ 20 3 ✓
" 17.	Do Do	✓ 20 10 ✓
" 18.	Do Do	✓ 20 15 ✓
" 19.	Do Do	✓ 20 3 ✓
" 20.	Do Do	✓ 22 1 ✓
" 21.	Do Do	✓ 20 1 ✓
" 22.	Do Do	✓ 20 5 ✓
" 23.	Do Do	✓ 19 12 ✓
" 24.	Do Do	✓ 20 1 ✓
" 25.	Do Do	✓ 19 4 ✓
" 26.	Do Do	✓ 20 5 ✓
" 27.	Do Do	✓ 20 12 ✓
" 28.	Do Do	✓ 19 14 ✓
Forward		No 6422 14

		No dicto	
Brofford.		6422	14
No 29	Soup Plate	✓ 19	7 ✓
" 30	Do. Do.	✓ 20	11 ✓
" 31	Do. Do.	✓ 20	14 ✓
" 32	Do. Do.	✓ 20	18 ✓
" 33	Do. Do.	✓ 20	12 ✓
" 34	Do. Do.	✓ 19	12 ✓
" 35	Do. Do.	✓ 19	14 ✓
" 36	Do. Do.	✓ 20	14 ✓
" 37	Do. Do.	✓ 20	7 ✓
" 38	Do. Do.	✓ 20	14 ✓
" 39	Do. Do.	✓ 20	2 ✓
" 40	Do. Do.	✓ 20	8 ✓
" 41	Do. Do.	✓ 19	6 ✓
" 42	Do. Do.	✓ 20	13 ✓
" 43	Do. Do.	✓ 20	7 ✓
" 44	Do. Do.	✓ 19	1 ✓
" 45	Do. Do.	✓ 20	
" 46	Do. Do.	✓ 20	4 ✓
" 47	Do. Do.	✓ 21	14 ✓
" 48	Do. Do.	✓ 19	4 ✓
Fore.		6826	16

£ dwt
 Best forward 6826 16
 18 Round Salts ✓

No 1	A do.	✓	7 19 ✓
" 2	Do.	✓	8 1 ✓
" 3	Do.	✓	8 7 ✓
" 4	Do.	✓	8 8 ✓
" 5	Do.	✓	7 18 ✓
" 6	Do.	✓	8 3 ✓
" 7	Do.	✓	7 16 ✓
" 8	Do.	✓	7 17 ✓
" 9	Do.	✓	7 14 ✓
" 10	Do.	✓	7 15 ✓
" 11	Do	✓	7 14 ✓
" 12	Do 22 10 69 10.7	✓	8 2 ✓
" 13	Do	✓	7 18 ✓
" 14	Do	✓	8 8 ✓
" 15	Do	✓	8 8 ✓
" 16	Do	✓	8 6 ✓
" 17	Do	✓	7 14 ✓
" 18	Do	✓	8 5 ✓

Forward
 £ 6971 9

£ s d

Brotford 6971 9
4 Soap Tureens with
Stands, Lings & Crest
handles

No 1 Large Tureen 179 6 ✓
Lining to do. 31 3 ✓
No 2 Large Tureen 181 3 ✓
Lining to do. 30 4 ✓
No 1 Large Stand of do. 106 1 ✓
" 2 Do. Do. 105 8 ✓
No 1 Small Tureen 139 17 ✓
Lining to do. 23 4 ✓
No 2 Small Tureen 139 . ✓
Lining to do. 23 17 ✓
No 1 Small Stand 88 3 ✓
" 2 Do. Do 86 1 ✓

12 Sauce Boats ✓
No 1 Large Boat 27 13 ✓
" 2 Do - Do 27 10 ✓
" 3 do - do 28 6 ✓
Total £ 8188 5

£ dwt

	Brotherhood	8188 5
No 4	Large Boat	✓ 27 8 ✓
" 5	Do - Do	✓ 28 2 ✓
" 6	Do - Do	✓ 28 16 ✓
" 7	Small Boat	✓ 22 2 ✓
" 8	Do - Do	✓ 21 14 ✓
" 9	Do - Do	✓ 20 17 ✓
" 10	Do - Do	✓ 21 17 ✓
" 11	Do - Do	✓ 21 1 ✓
" 12	Do - Do	✓ 21 16 ✓

SHO 1, 18

12 Chamber Candlesticks

No 1	Do - Do	✓ 12 13 ✓
" 2	Do - Do	✓ 12 12 ✓
" 3	Do - Do	✓ 12 8 ✓
" 4	Do - Do	✓ 12 12 ✓
" 5	Do - Do	✓ 12 2 ✓
" 6	Do - Do	✓ 12 17 ✓
" 7	Do - Do	✓ 13 17 ✓
" 8	Do - Do	✓ 13 16 ✓
" 9	Do - Do	✓ 13 8 ✓

Forward £ 8518 3

			#s	cents
	Bretford		2518	3
No 10	Chamber band	#s	13	3 ✓
" 11	Do	Do	13	2 ✓
" 12	Do	Do	13	15 ✓

12 Chased Table band #s ✓				
No 1	A	Do	Do	27 15 ✓
" 2	A	do	do	28 4 ✓
" 3	Do		Do	27 12 ✓
" 4	Do		Do	28 6 ✓
" 5	Do		Do	28 7 ✓
" 6	Do		Do	27 19 ✓
" 7	Do		Do	28 17 ✓
" 8	Do		Do	29 1 ✓
" 9	Do		Do	30 10 ✓
" 10	Do		Do	29 12 ✓
" 11	Do		Do	30 1 ✓
" 12	Do		Do	29 13 ✓

2 Toast Racks				
No 1	Do		Do	12 9 ✓
" 2	Do		Do	12 13 ✓

Forward ^{to} 8929 2

£ s d

Prot form^d 8929 2

No 1 Mustard Pot - ✓ 6 10 ✓

" 2 Do - Do - ✓ 7 7 ✓

No 1 Wine Funnel - ✓ 6 5 ✓

" 2 Do - Do - ✓ 6 3 ✓

4 Snuffer Trays ✓

No 1. Do - Do } ✓ 12 2 ✓

" 2 Do - Do - ✓ 11 5 ✓

" 3 Do - Do - ✓ 11 16 ✓

" 4 Do - Do - ✓ 11 17 ✓

4 Patent Snuffers ✓

No 1. Do - Do - ✓ 5 17 ✓

" 2 Do - Do - ✓ 5 12 ✓

" 3 Do - Do - ✓ 5 15 ✓

" 4 Do - Do - ✓ 5 15 ✓

4 Grecian Ice Pails ✓

No 1 A do - do - ✓ 113 14 ✓

" 2 A do - do - ✓ 114 6 ✓

" 3 A do - do - ✓ 114 16 ✓

Form^d 9368 10

075 dwt

Brothford... - 9360 10
No 4 Grecian Ice Pail - ✓ 115 14 ✓

4 Extra linings to Ice Pails
for beams, gilt inside ✓

No 1 - - - - - ✓ 13 12 ✓
" 2 - - - - - ✓ 13 11 ✓
" 3 - - - - - ✓ 13 12 ✓
" 4 - - - - - ✓ 13 3 ✓

4 Pine bord^d Ice Pails ✓

No 1 - - - - - ✓ 136 13 ✓
" 2 - - - - - ✓ 141 11 ✓
" 3 - - - - - ✓ 139 3 ✓
" 4 - - - - - ✓ 140 17 ✓

A 2 1/2 Inch Ch^d gilt Mallets 212 16 ✓
No 1 A 22 In d^o to ungilt ✓ 1158 14 ✓
" 2 A d^o - - - - - ✓ 156 1 ✓
No 1 A 17 In d^o - - - ✓ 93 11 ✓
" 2 A d^o - - - - - ✓ 86 10 ✓
Forw^d 075 10794 1

O^{to} deuto

Brotford	10794	1
No 1 A 10 In ² Wacter.	✓ 25	16 ✓
" 2 A do do	✓ 27	1 ✓
" 3 A 9 do do	✓ 19	10 ✓
" 4 A do do	✓ 19	5 ✓
" 5 An 8 ³ In ² 1 do	✓ 15	6 ✓
" 6 A do do	✓ 14	19 ✓
" 7 A do do	✓ 16	4 ✓
" 8 A do do	✓ 15	18 ✓

No 1 A Bread Basket	✓ 113	16 ✓
" 2 do do	✓ 44	✓
No 1 A Chased Coffee Pot w th handle	✓ 42	14 ✓
" 2 A do do	✓ 38	18 ✓
No 1 A do Sugar Bason	✓ 26	5 ✓
" 2 A do do	✓ 26	3 ✓
No 1 A do Cream Ewer	✓ 16	15 ✓
" 2 A do do	✓ 16	9 ✓
No 1 A Plain Tea Pot	✓ 20	4 ✓
" 2 A do 2 ^d size	✓ 18	17 ✓
" 3 A do 3 ^d do	✓ 17	2 ✓
Total		✓ 11259 3

Broth Forks. 11259 3
 No 1 A Tea Pot. 1/2 size ✓ 12 5 ✓
 No 1 A plain Sugar Bason ✓ 15 1 ✓
 " 2 A do do ✓ 14 12 ✓
 No 1 A do cream Ewer ✓ 9 2 ✓
 " 2 A do do ✓ 9 1 ✓

Around Vegetable Dish

wth Cover, Lin^g & Warmer ✓ 194 11 ✓
 A large Saucepan & Cover ✓ 33 18 ✓
 No 1 A Knife Tray - ✓ 36 2 ✓
 " 2 A do do - ✓ 35 6 ✓
 A Cheese Toaster ✓ 49 8 ✓

12 D^r Table Forks, - ✓ 485 2 ✓
 12 D^r D^r Knives ✓ 144 16 ✓
 9 D^r D^r Spoons. ✓ 352 11 ✓
 12 Gravy Spoons. - ✓ 77 3 ✓
 4 Soup Laddles. - ✓ 39 19 ✓
 12 Sauce D^r. - ✓ 35 5 ✓
 18 Salt - do - ✓ 17 12 ✓

Fork^d the 1282017

	No	dents
Broth forw.	12820	17
12 ^{pr} Carvers	30	3 ✓
2 Mustard Ladles	2	2 ✓
2 Salad Forks & Spoons	26	2 ✓
10 Down Tea Spoons	124	8 ✓
6 ^{pr} Sugar Tongs	12	11 ✓
12 ^{Box} Desert Knives	174	18 ✓
6 ^{do} of which have Silver blades		
6 ^{Box} Desert Forks	141	14 ✓
6 ^{do} - ^{do} Spoons	143	18 ✓
6 Sugar Ladles	12	11 ✓
6 Cream do	11	15 ✓
6 Ice Spoons	25	15 ✓
4 ^{pr} gilt Grape Scissors	12	11 ✓
12 Frames for Labels	9	9 ✓
2 ^{pr} Asparagus Tongs	15	1 ✓
2 Butter Knives	4	5 ✓
14 chased Royal Crest handles, attached to the Plated covers	71	19 ✓
Forw.	13739	19

A chased metal gilt Plateau
 in 5 pieces, 2 round Plateaux to
 match, 4 Candelabras for 6 lights
 each, 6 Tripod Ornaments, 2 Etruscan
 Vases, 3 groups of Figures, an Ornamental
 Epergne with 8 Plates on Pedestal,
 4 Fruit Baskets on circular Stands
 and various Ornaments for Flowers
 the whole - en suite ✓

06 dwt

Brofford 13739 19

14 Oval plated Dish

Covers ✓

16 Plated Warmers ✓

to Entré Dishes ✓

4 do do for 16 Inch Dishes ✓

Silver gilt Chapel Plate ✓

No 1 A Flagon ✓ 65 5 ✓

" 2 A do ✓ 66 - ✓

A large Salver for bread ✓ 39 11 ✓

No 1 A Chalice ✓ 21 6 ✓

A Cover to do ✓ 10 7 ✓

No 2 A Chalice ✓ 21 8 ✓

A Cover to do ✓ 10 2 ✓

No 1 A Paten ✓ 14 13 ✓

" 2 A do ✓ 14 16 ✓

No 1 A Collecting Plate ✓ 22 4 ✓

" 2 A do do ✓ 21 15 ✓

A Spoon to take out flies ✓ 4 2 ✓

£ 14051 8

This is to certify that the foregoing Articles of Plate have been completed, each piece weighed, marked & engraved with the Royal Arms in the front and at the back an Inscription stating that it belongs to His Majesty's Embassy at the Court of France, and was shipped on board the "Superb" steam packet Captⁿ. Black, addressed to His Britannic Majesty's Ambassador in Paris, to the care of -
Mess^{rs}. Pigault, Maubailley & Co.
à Calais.

Wm. West

Jewel Office in the Department
of the Lord Chamberlain of

His Majesty's Household
August 20th 1825



[Handwritten signature]

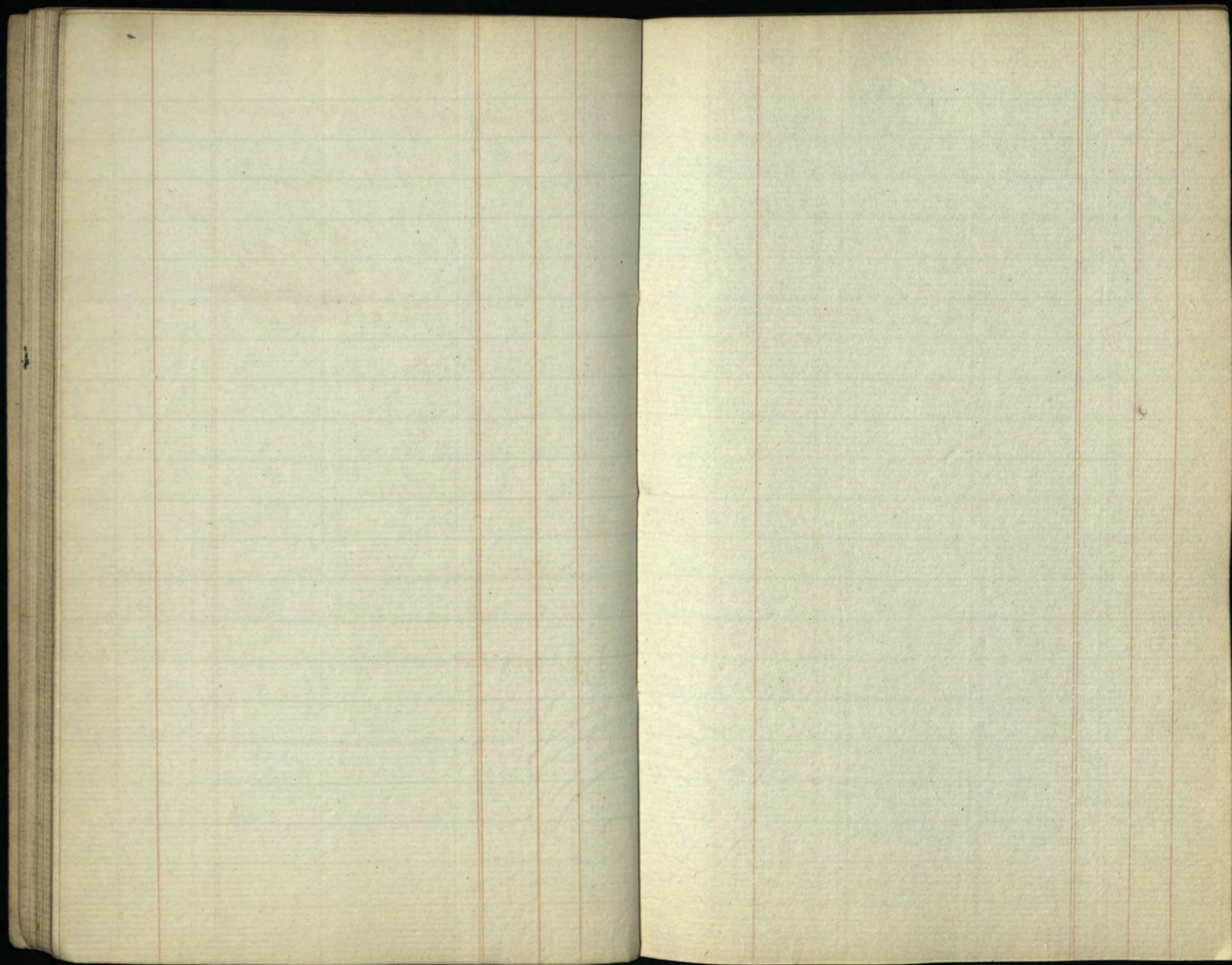
Entered

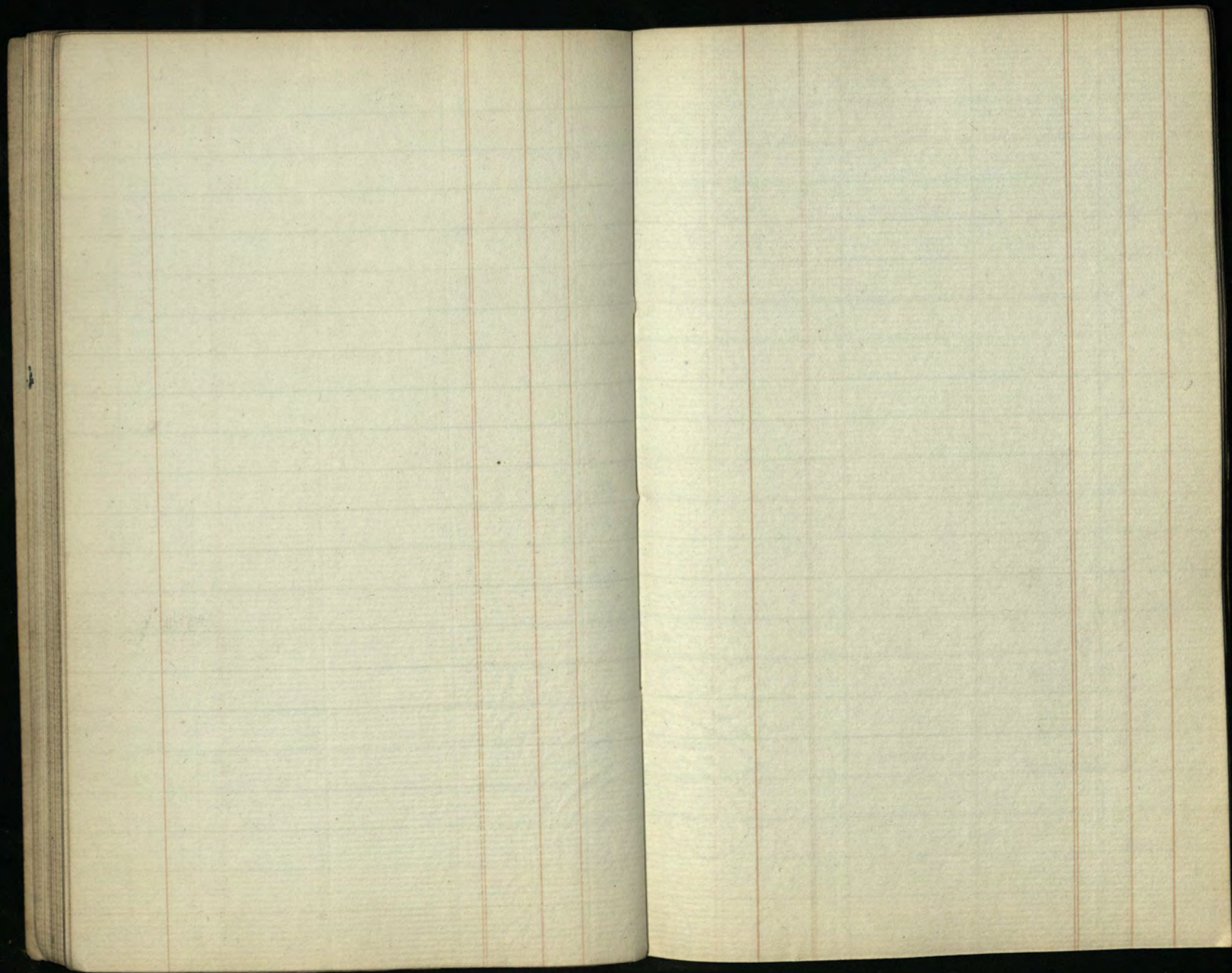
[Handwritten signature]

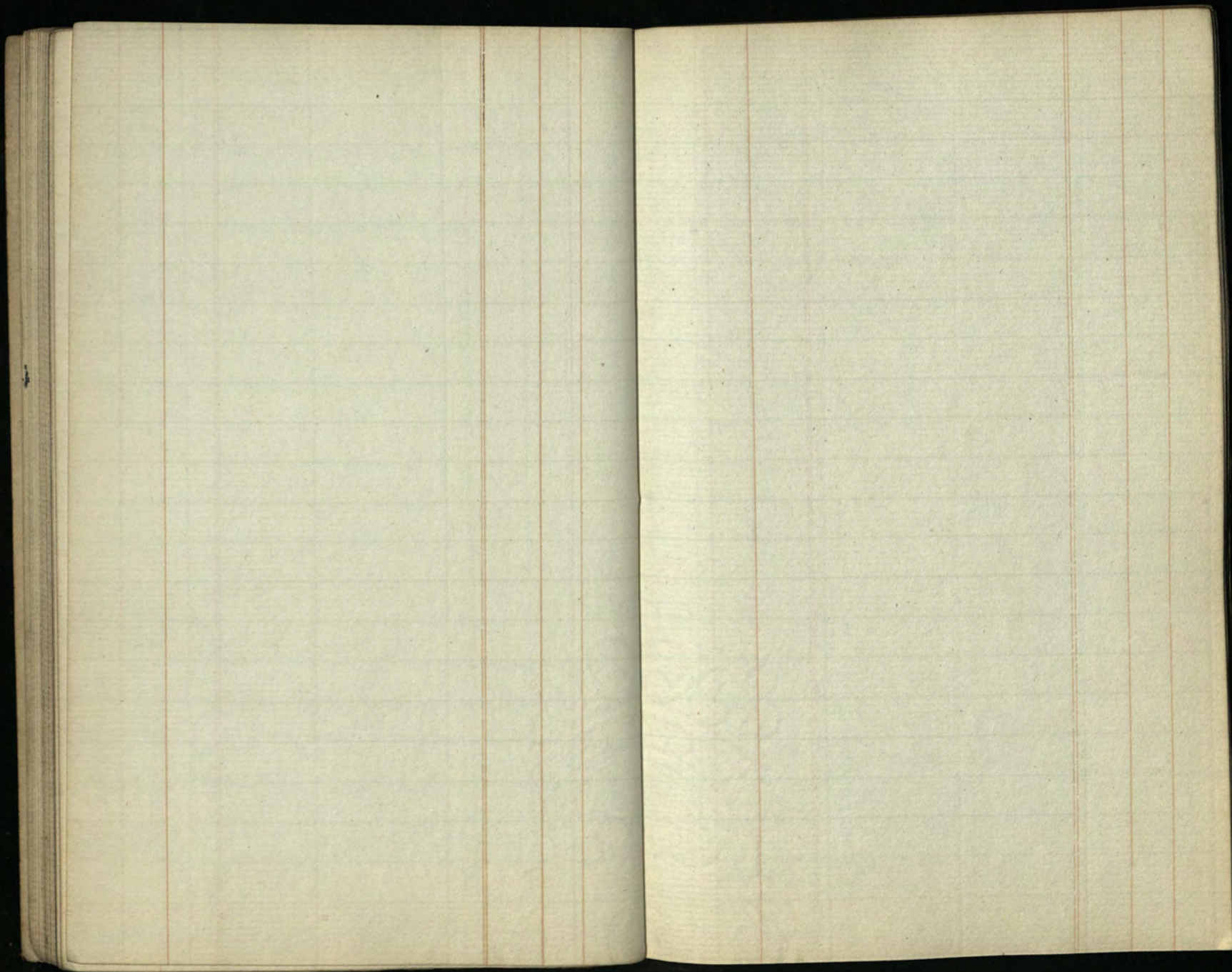
Two Copies of this Inventory enclosed
to John Bidwell Esq^r. Foreign Office
August 20th 1825.

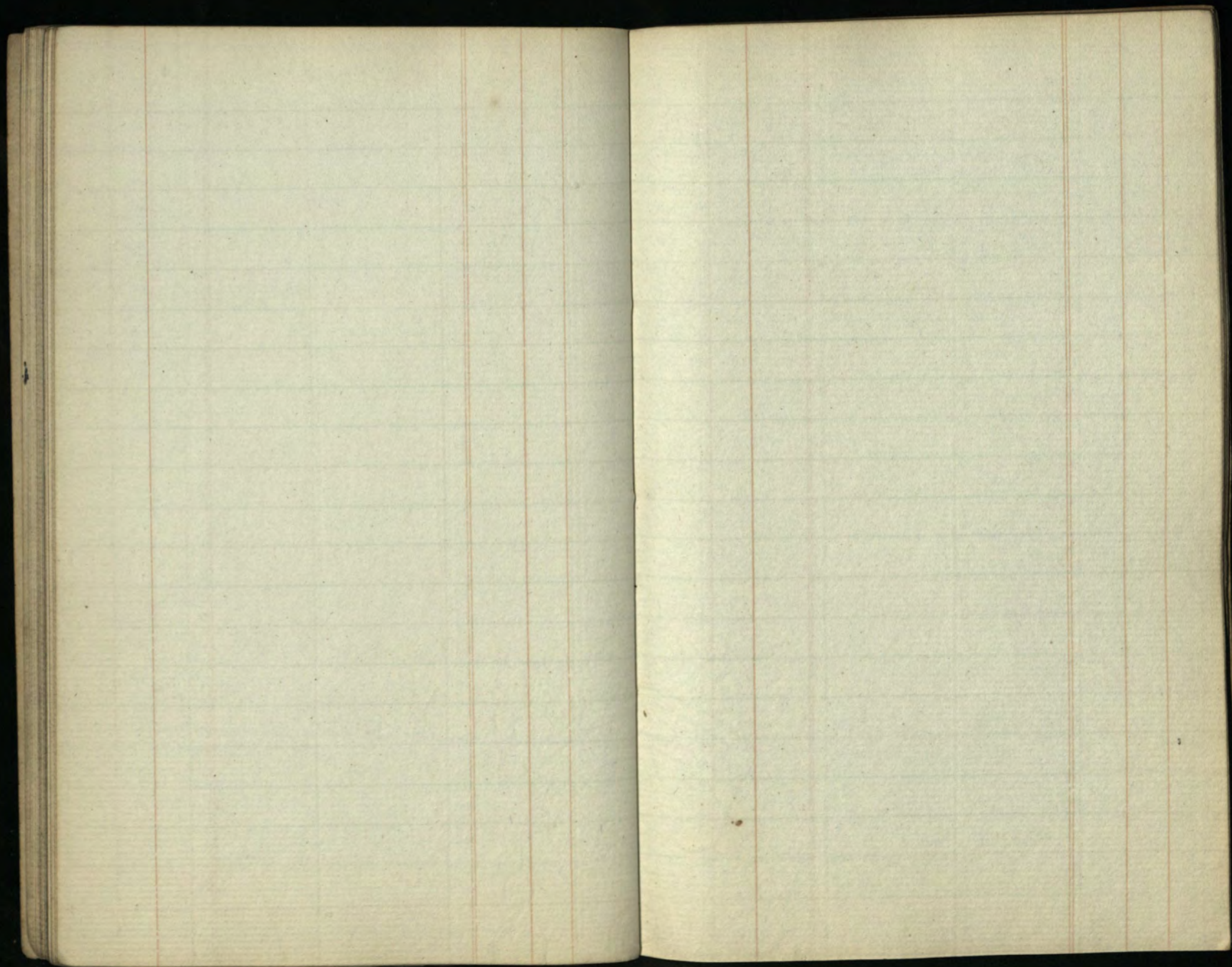
[Faint, illegible handwriting in cursive script, likely a letter or document.]



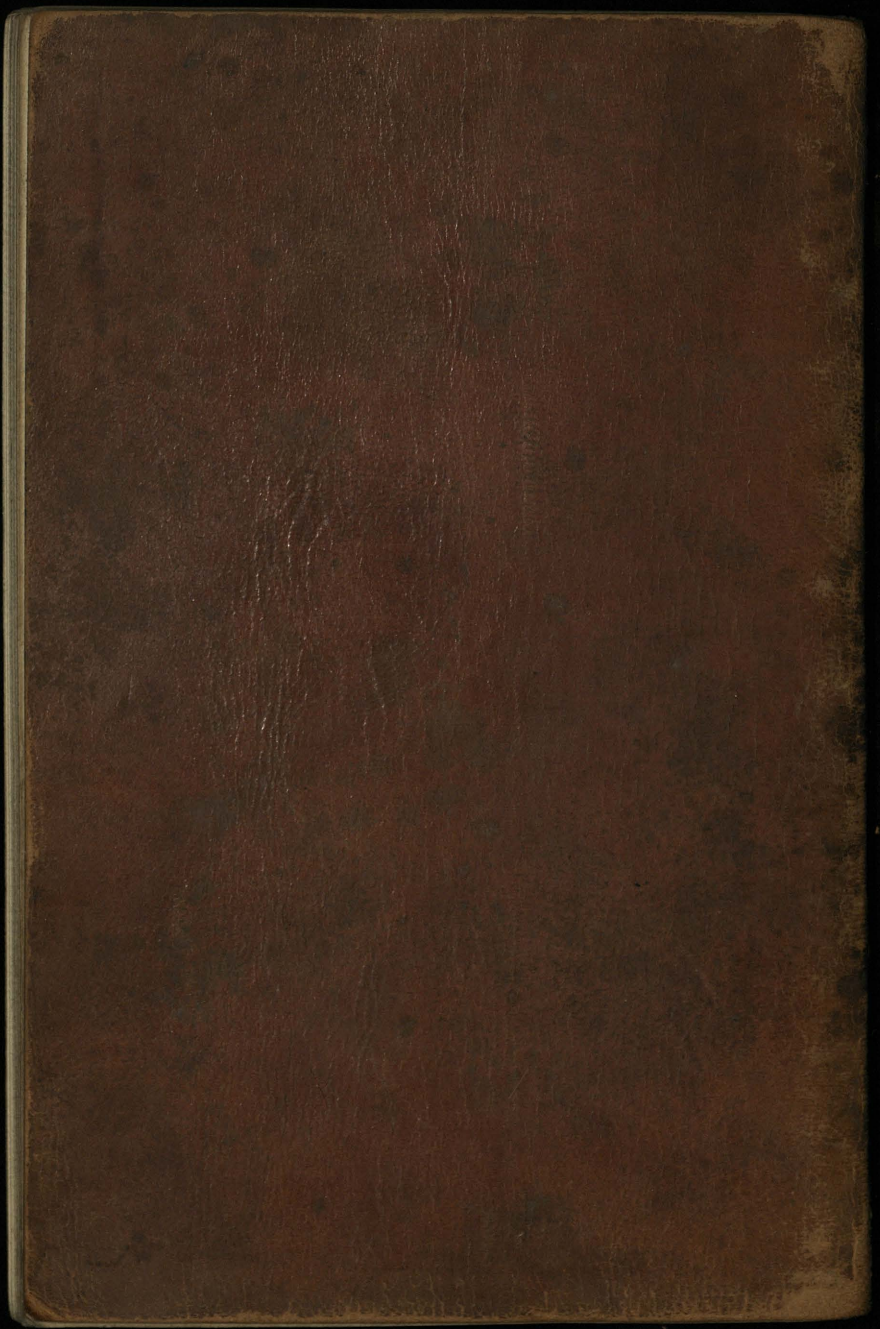








**A number of blank pages follow
and have not been photographed.**



Supplied by the Royal Archives / © His Majesty King Charles III 2023