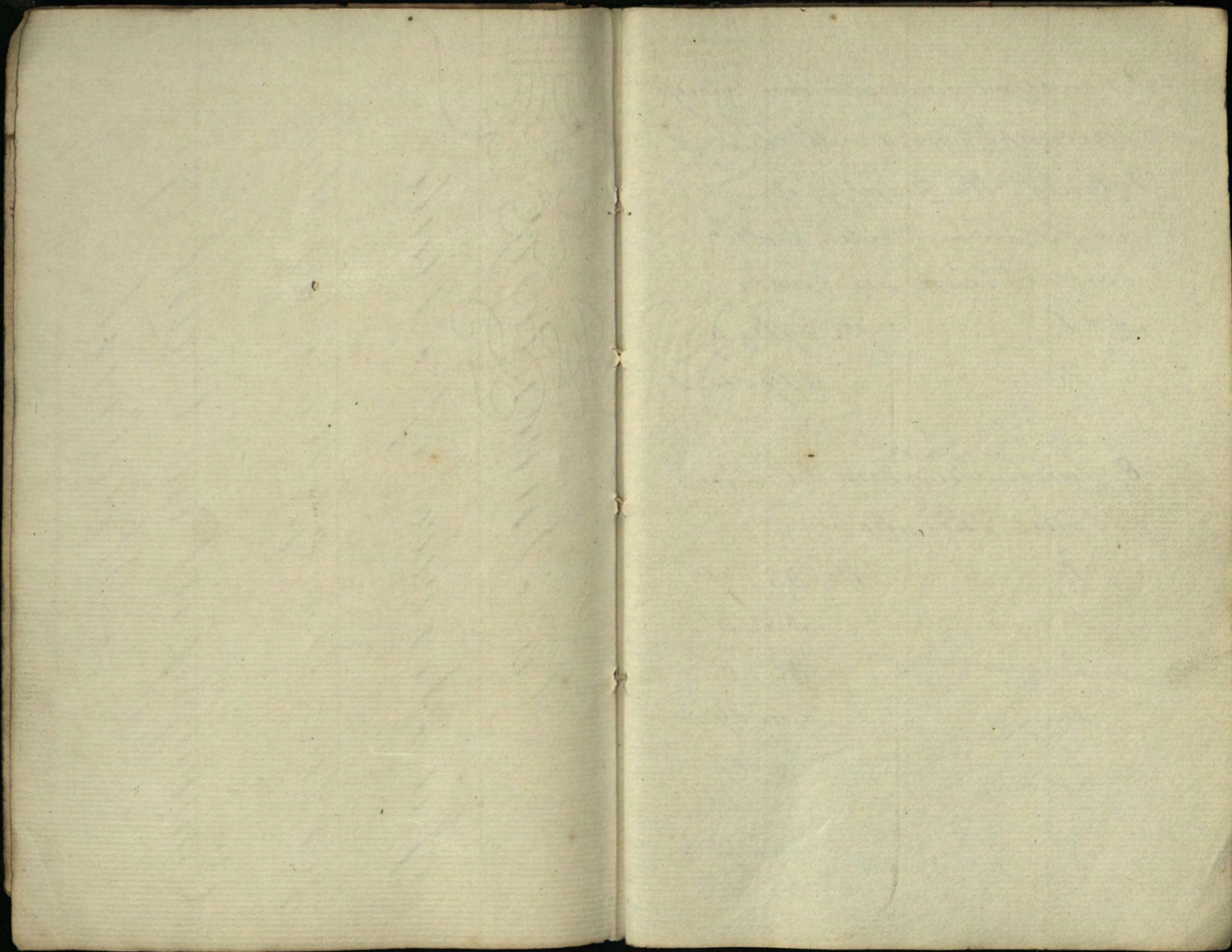


Geo. Addl. 1755. 27/5

(Sent by the Lord Chamberlain's Office, 1950)

An Inventory
of a Service of Plate
for the Use of His Majesty's
Embassy at the Court of
Madrid

1825



2 handsome oval gadroon Soup
Tureens & Covers with Linings
& Stands. His Majesty's Arms
brought on each side, with
Crest & Crown on Cover ✓

No 1. £ 276. 5 ✓
" 2. 279. 18 ✓

8 Sauce Tureens & Covers
to suit the above ✓

No 1. £ 35. 7 ✓
" 2. 35. 5 ✓
" 3. 35. 8 ✓
" 4. 34. 19 ✓
" 5. 34. 17 ✓
" 6. 34. 18 ✓
" 7. 35. 7 ✓
" 8. 35. . ✓

0 37. 45
45

837. 4. -
455. 5 164
1211
5
037. 4

8 oval shaped gadroon & leaf
flat Dishes ✓

a 22 inch No 1. £s 100. 1 ✓
a do " 2 101. 2 ✓
a 19 inch " 1 76. 11 ✓
a do " 2 76. 10 ✓
an 18 inch " 1 65. 3 ✓
a do " 2 66. ✓
a 16 inch " 1 50. 1 ✓
a do " 2 50. 17 ✓

2 oval covers with fluted bands
chased Arms each side, with
crest & Crown on top ✓

No 1. £s 122. 4 ✓
" 2 124. 13 ✓

~~833~~ Dishes -
837. 4. ✓

833. 2
833. 2
1670. 6

4 53

833. 2

1670. 6

343. 3
end of 1/2 of 1/2 of 1/2

14 pound shaped gadroon &
leaf flat Dishes &

No 1	25.15 ✓
" 2	25.11 ✓
" 3	25.10 ✓
" 4	25.2 ✓
" 5	25.10 ✓
" 6	25.3 ✓
" 7	25.12 ✓
" 8	26.4 ✓
" 9	25.2 ✓
" 10	25.9 ✓
" 11	25.10 ✓
" 12	25.3 ✓
" 13	25.3 ✓
" 14	25.10 ✓

As last
1670 in 6 in

1670 6
35 6 4
2026 10

356.4
25
2026.10

37.5
34
10.4
5

356.4

14 fluted band dome Covers
for round Dishes, chased
Arms &c each side

No 1	36. 3 ✓
" 2	35. 8 ✓
" 3	36. 8 ✓
" 4	36. 15 ✓
" 5	35. 6 ✓
" 6	36. 13 ✓
" 7	36. 3 ✓
" 8	35. 15 ✓
" 9	35. 7 ✓
" 10	35. 7 ✓
" 11	36. 3 ✓
" 12	35. 12 ✓
" 13	35. 17 ✓
" 14	35. 16 ✓

2026. 10

2026. 15. -

502. 13

2529. 3

86

502. 13

2529. 3

86

1/2 pound plate gadroon & leaf
Dishes 2nd Course ✓

No 1	25 ^s 11 ✓
" 2	25 ^s 4 ✓
" 3	25 ^s 13 ✓
" 4	25 ^s 14 ✓
" 5	25 ^s 16 ✓
" 6	25 ^s 12 ✓
" 7	25 ^s 5 ✓
" 8	25 ^s 13 ✓
" 9	25 ^s 8 ✓
" 10	25 ^s 13 ✓
" 11	25 ^s 3 ✓
" 12	25 ^s 6 ✓
" 13	25 ^s 12 ✓
" 14	25 ^s 14 ✓

2529^s 3

357^s 4

~~2529^s 3~~

2529^s 3
357^s 4

2886^s 7

77

357^s 4

77

54^s 4
144^s 7

2886^s 7

357^s 4

Round silver Stands with
Lamps for round Dishes

No 1. On 36. 1 ✓
" 2. 36. 5 ✓

gob shaped gadroon & leaf
border Table Plates ✓

No 1 On 20. 10 ✓
" 2 20. 10 ✓
" 3 21. . ✓
" 4 20. 8 ✓
" 5 21. 11 ✓
" 6 21. 5 ✓
" 7 21. . ✓
" 8 21. . ✓
" 9 21. . ✓
" 10 20. 10 ✓
" 11 20. 19 ✓
" 12 20. 13 ✓

2086. 7

322. 12

3208. 19

2086. 7

322. 12

3208. 19

n 4

322. 12

3208. 19

92. 2H
4

322. 12

Table Plates continued

No 13.	Ar 21.	✓
No 14.	20. 15	✓
" 15.	20. 13	✓
" 16.	20. 11	✓
" 17.	20. 7	✓
" 18.	20. 11	✓
" 19.	21. 1	✓
" 20.	20. 14	✓
" 21.	21. ✓	✓
" 22.	20. 18	✓
" 23.	21. 16	✓
" 24.	20. 14	✓
" 25.	21. ✓	✓
" 26.	21. 5	✓
" 27.	20. 10	✓
" 28.	20. 11	✓
" 29.	21. 1	✓
" 30.	20. 9	✓
" 31.	20. 19	✓

On date
3200. 19 - 10

3100. 14
41 15

3250. 14

3200. 19

395. 15

3604. 14. 1 8

181.8

395. 15.

3604. 14

15

Table Plates continued

No 32	On 20. 15 ✓
" 33	21. - ✓
" 34	21. 2 ✓
" 35	21. 1 ✓
" 36	20. 13 ✓
" 37	21. - ✓
" 38	20. 16 ✓
" 39	20. 8 ✓
" 40	20. - ✓
" 41	21. 1 ✓
" 42	20. 6 ✓
" 43	22. 6 ✓
" 44	20. 9 ✓
" 45	20. 5 ✓
" 46	20. 15 ✓
" 47	20. 6 ✓
" 48	20. 7 ✓
" 49	20. 13 ✓
" 50	20. 13 ✓
" 51	20. 4 ✓
" 52	20. 19 ✓

end of 4th Col

On Feb -
3604. 14

434. 9
434. 3

3604. 14

434. 19

4039. 13

17

19

434. 19

891. 7

159

4039. 13

43. 14

434

9

Table Plates continued

No 53	Oct 21 ^u ✓
" 54	20 ^u 13 ^v
" 55	20 ^u 6 ^v
" 56	20 ^u 17 ^v
" 57	21 ^u - ^v
" 58	20 ^u 8 ^v
" 59	20 ^u 4 ^v
" 60	20 ^u 13 ^v
" 61	21 ^u 2 ^v
" 62	20 ^u 12 ^v
" 63	20 ^u 11 ^v
" 64	20 ^u 12 ^v
" 65	21 ^u 7 ^v
" 66	20 ^u 8 ^v
" 67	20 ^u 17 ^v
" 68	21 ^u 4 ^v
" 69	20 ^u 15 ^v
" 70	20 ^u 16 ^v
" 71	21 ^u 1 ^v
" 72	20 ^u 8 ^v
" 73	20 ^u 17 ^v

4039^u 13

4474 14

4030 13

445 11

4475 14

1.9

43 5 11
 4475 14

15

1.9

43 5 11

Table Plates continued

No 74	On 21" 5 ✓
" 75	21" ✓
" 76	20" 16 ✓
" 77	20" 5 ✓
" 78	21" 5 ✓
" 79	19" 15 ✓
" 80	21" 6 ✓
" 81	20" 17 ✓
" 82	20" 19 ✓
" 83	21" 18 ✓
" 84	20" 14 ✓
" 85	20" 15 ✓
" 86	20" 18 ✓
" 87	20" 6 ✓
" 88	21" 6 ✓
" 89	20" 16 ✓
" 90	20" 13 ✓
" 91	20" 16 ✓
" 92	20" 18 ✓
" 93	21" ✓
" 94	22" 7 ✓
" 95	21" ✓
" 96	20" 19 ✓

end of 5th lot

4475. 4

445 12
446 14

4475. 4

48 14

4956. 18

12

3012

40

31

254

481. 14

4956. 18

12

14

24 shaped gadroon & leaf border
Soup Plates ✓

No 1	On 21. ✓
" 2	21. 17 ✓
" 3	21. 3 ✓
" 4	21. 3 ✓
" 5	21. 8 ✓
" 6	22. 3 ✓
" 7	21. 10 ✓
" 8	21. 15 ✓
" 9	21. 18 ✓
" 10	22. ✓
" 11	22. 5 ✓
" 12	21. 8 ✓
" 13	21. 5 ✓
" 14	22. 2 ✓
" 15	21. 12 ✓
" 16 end of 5 th lot	21. 10 ✓
" 17	22. 2 ✓
" 18	22. 15 ✓
" 19	21. 15 ✓
" 20	21. 8 ✓
" 21	22. 5 ✓

4956.10

476.4

5432.22

4956.10

456.4

5413.2 8

17.10
81.10

36 5.10
164

456.4

5413.2

476.4

Soup Plates continued

No 22 Or 22..10 ✓
 " 23 20..18 ✓
 " 24 22..10 ✓

*4 Nose shape Ice Pails with
 chased vine stem handles ✓*

No 1 Or 113..15 ✓
 " 2 112..8 ✓
 " 3 113..11 ✓
 " 4 112..15 ✓

*12 oval gadroon border
 Salted gilt inside ✓*

No 1 Or 7..14 ✓
 " 2 7..5 ✓
 " 3 7..10 ✓
 " 4 7..11 ✓
 " 5 7..9 ✓
 " 6 7..14 ✓
 " 7 7..13 ✓
 " 8 7..11 ✓
 " 9 7..8 ✓
 " 10 7..11 ✓
 " 11 7..7 ✓
 " 12 7..14 ✓

54 13. 2.
 608. 14

54 13. 2.
 608. 14

 6021 16

2 10 10

2. 10 10

608. 14

 6021. 16
 600

 74
 214

 10

 14

6 gadroon border, flanch'd
 Bottle Stands with
 silver centres

no 1. Cr 10" 7 1/2 ✓
 " 2 10" 6 1/2 ✓
 " 3 10" 4 1/2 ✓
 " 4 9" 17 1/2 ✓
 " 5 10" 8 1/2 ✓
 " 6 10" 4 1/2 ✓

an oblong gadroon 8 glass
 Crucel Frame with silver
 mounts to glasses

no 1. Cr 4 7/8 1/4 ✓

a 24 Inch oval shaped gadroon
 Tea Waiter with feet &
 handles

no 1. Cr 17 3/4 3/4 ✓

6021. 16.

6021. 16.
 275. 3
 6021. 16.

6021. 16

275. 3

6021. 16

113

282. 3
 6303. 19

12. 3
 63
 3
 273. 3

14 Inch round gadroon
border Dinner Waiters ✓

N^o 2 £ 20.. 9 ✓
" 3 21.. 5 ✓
" 4 20.. 12 ✓
" 5 20.. 17 ✓

8 Antique scroll pattern
Table Candlesticks ✓

N^o 1 £ 23.. 6 ✓
" 2 23.. 13 ✓
" 3 23.. 16 ✓
" 4 23.. 3 ✓
" 5 22.. 16 ✓
" 6 22.. 14 ✓
" 7 22.. 10 ✓
" 8 23.. 8 ✓

6303.19
260
2

6244.19
268.4
6563.3 26

542.6
268.4

6572.3
268
6
4

8 antique scroll pattern
2 light Branches to
suit Candlesticks ✓

No 1	£ 53. 3 ✓
" 2	53. 15 ✓
" 3	54. - ✓
" 4	54. 18 ✓
" 5	54. 2 ✓
" 6	52. 14 ✓
" 7	52. 3 ✓
" 8	54. 13 ✓

4 round gadroon hand
Candlesticks with Extinguishers
& Snuffers - complete ✓

No 1	£ 10. 10 ✓
" 2	10. 13 ✓
" 3	10. 13 ✓
" 4	10. 13 ✓

6572.3.

6563.3.

471.17

5035. -

1702.14

422.9 - 42.9

7001.11

31

3.5

117

471.17

7044. -

17

an oblong gadroon fluted
Bread Basket

no 1 On 36. 17^v

2 gadroon & fluted Coffee
Pots, with Ivory handles &c

no 1 On 24. 15^v

" 2 24. 12^v

2 gadroon & fluted Tea
Pots to suit with stands

no 1 On 31. 19^v

" 2 32. 19^v

7044 -

12

5

7035 -

151. 2

7106. 2 24.

24

151. 2

7195. 2

21

32
02
4

151 2 2

2 gadroon fluted Sugar
Basons gilt inside
no 1. £s 18. 9^v
" 2 18. 7^v

2 gadroon fluted
Cream Ewers to suit
no 1. £s 11. 12^v
" 2 11. 12^v

Knives Forks & Spoons
2 double threaded Fiddlers }
Soup Ladles } 18. 2^v
8 Sauce Ladles . . . 19. 17^v
8 Gravy Spoons . . . 19. 8^v
12 dozen Table Forks . . 420. 1^v
4 dozen do Spoons . . 141. 10^v
1 dozen Salt Ladles . . 9. 9^v
1 Pepper Ladle }
1 Mustard do } 2. 2^v

7195.2

7186.2
720.9 64

720.2 6

720.18

720.9 68 26 4

7415.11 49 4 9

Spoons &c continued

6 Skewers.	On 27 ⁿ 3 ^v
2 Fish Knives	14 ⁿ 4 ^v
1 pair Asparagus Tongs	7 ⁿ 4 ^v
3 dozen Desert Knives	} 25 ⁿ 18 ^v
steel blades	
3 dozen D ^o silver blades	67 ⁿ 19 ^v
3 dozen Desert Forks	61 ⁿ 15 ^v
3 dozen D ^o Spoons	58 ⁿ 14 ^v
12 dozen Table Knives	158 ⁿ 2 ^v
4 pair of Carvers	11 ⁿ 2 ^v
3 dozen Tea Spoons	34 ⁿ 3 ^v
2 pair Sugar Tongs	4 ⁿ 6 ^v

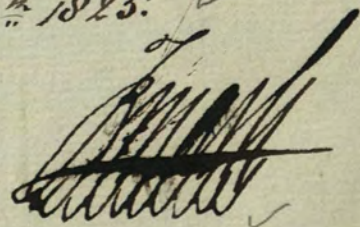
470 2
 2 6 2
 This is to Certify - that the foregoing Articles of Plate have been completed, each piece weighed marked, and Engraved, with the Royal Arms in ^{the} front, and at the back an Inscription stating that it belongs to His Majesty's Embassy at the Court of Madrid -
 and

7915.41

and was shipped on the 5th of May 1825. on board the Caledonia - Captain P Wrightson - addressed to The Honble Fredk Lamb His Britannic Majesty's ambassador at the Court of Madrid - to the Care of John Clarke Esq - His Britannic Majesty's Consul at Bilbao -
 Rundell Bridge Rundell & Co

Jewel office in the Department of the Lord Chamberlain of His Majesty's Household
 May 28th 1825.

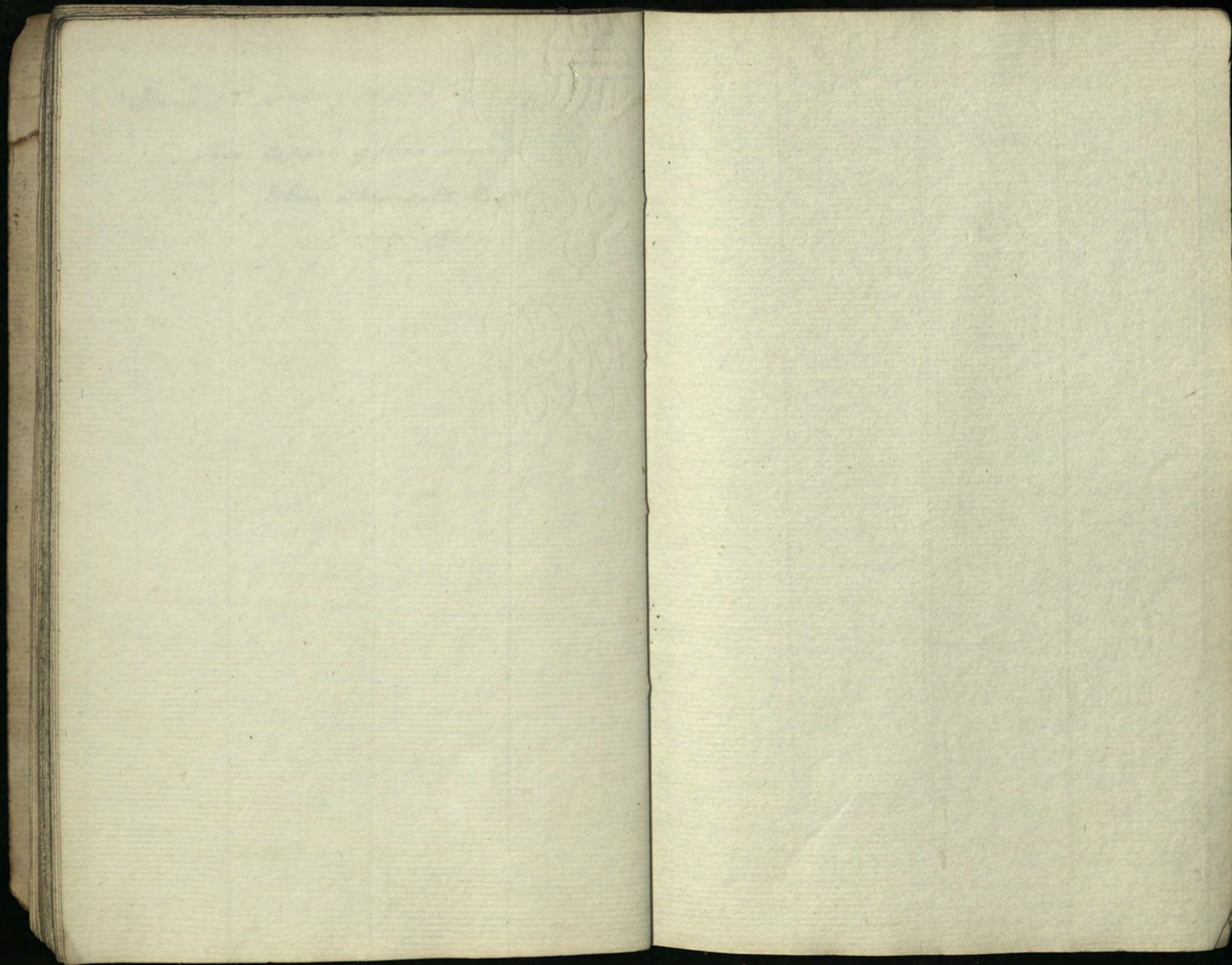
470 2
 8385.75
 Certified John Thomas

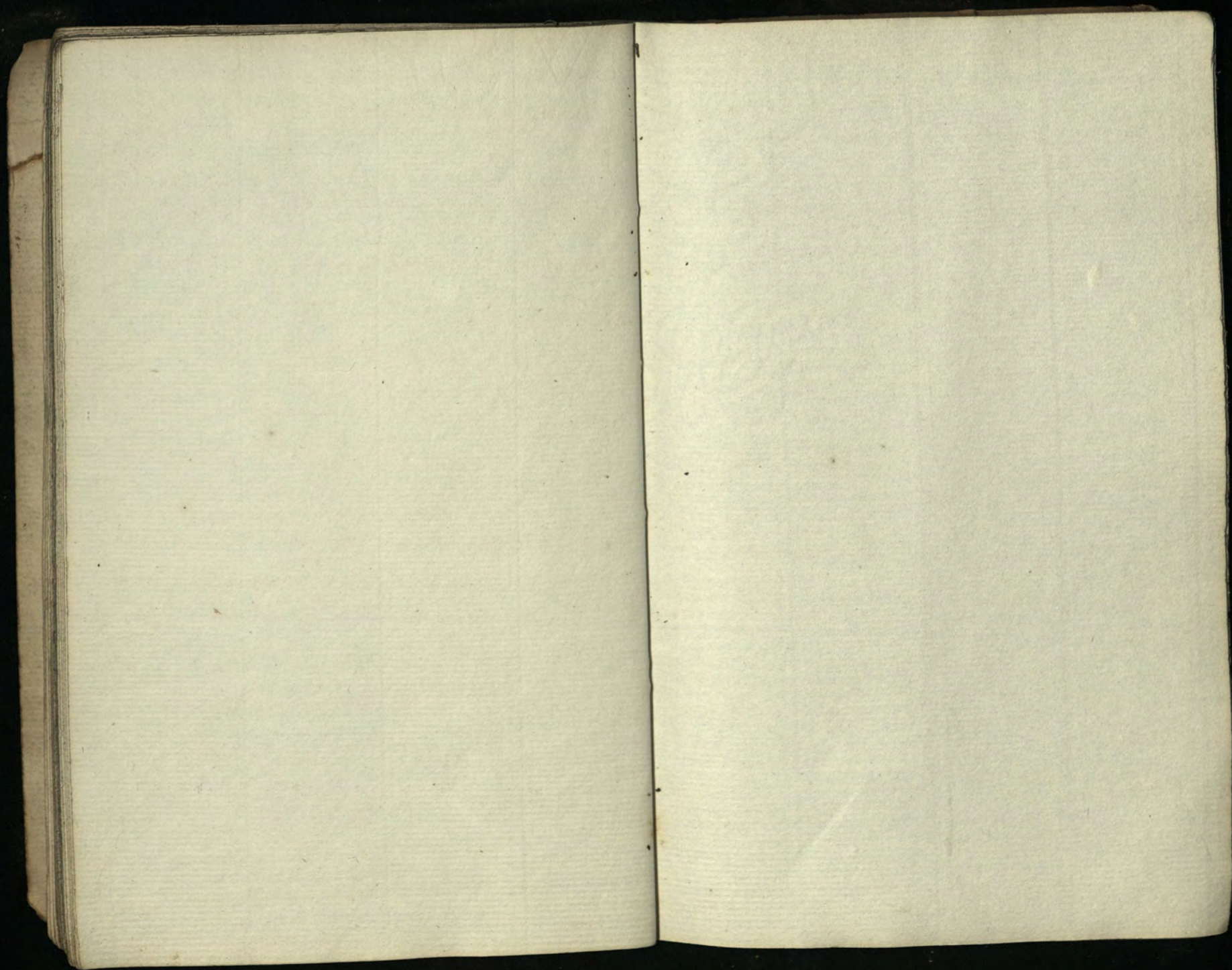


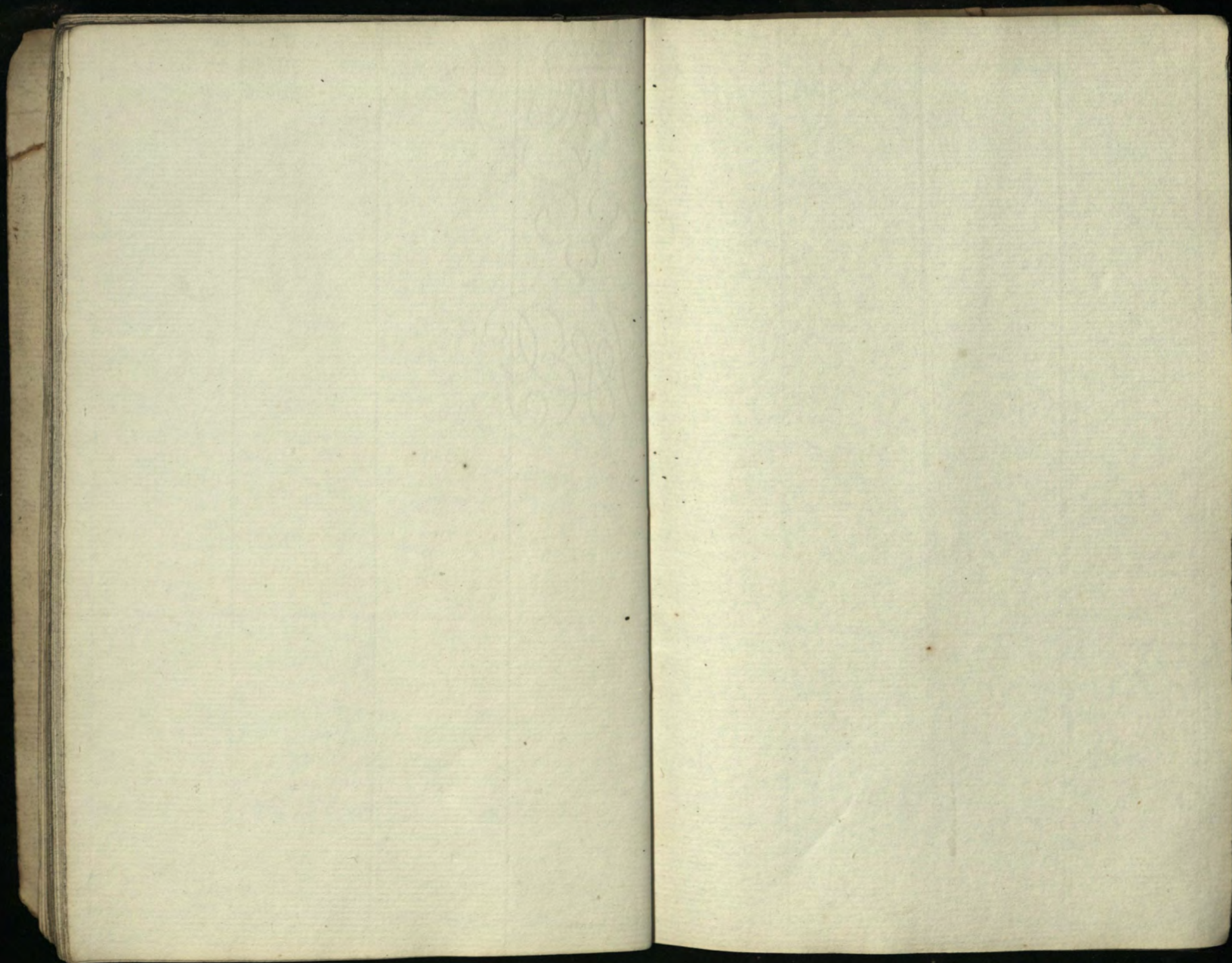
June 1st 1825

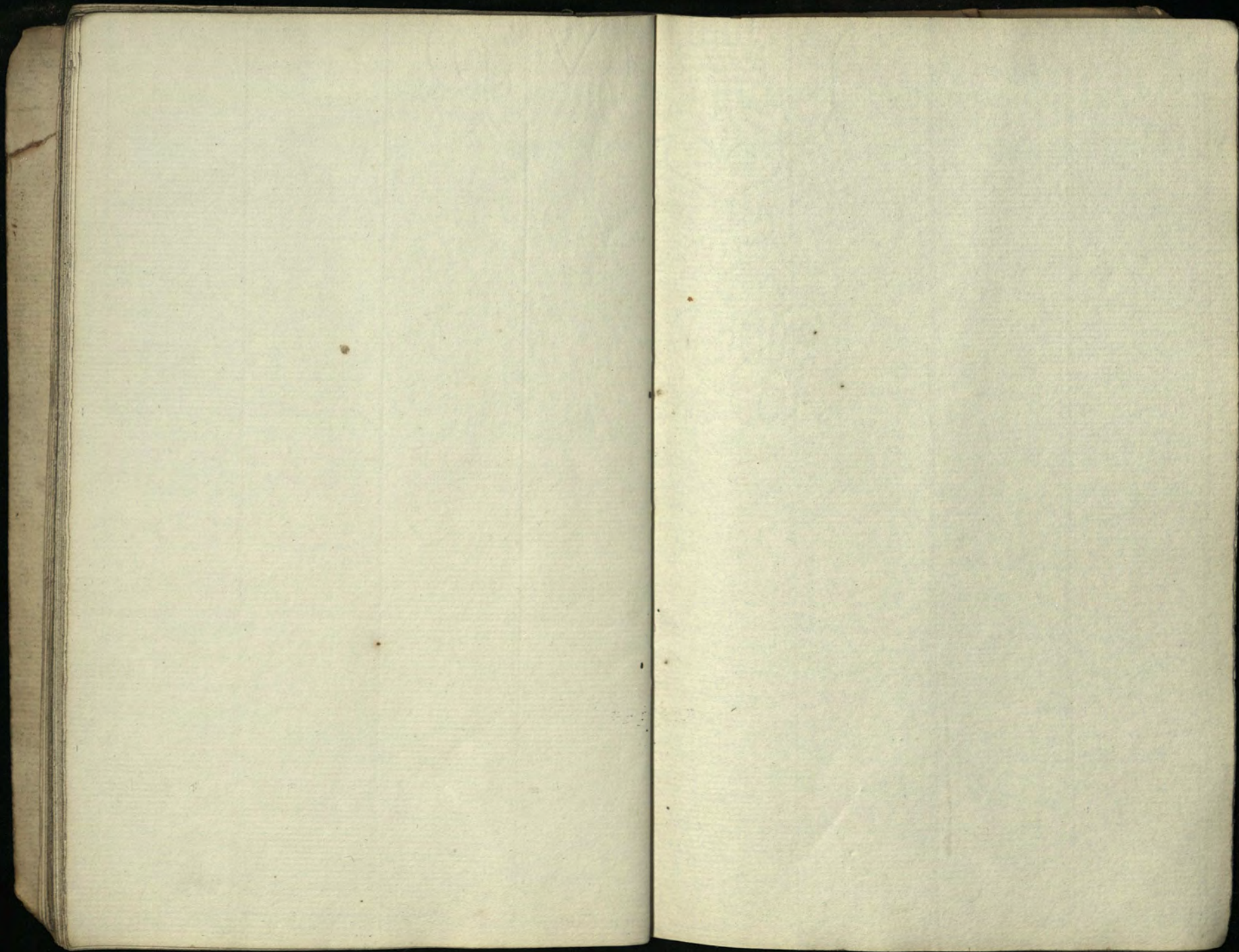
Two copies of this sent to
John Bidwell Esq.
Foreign office

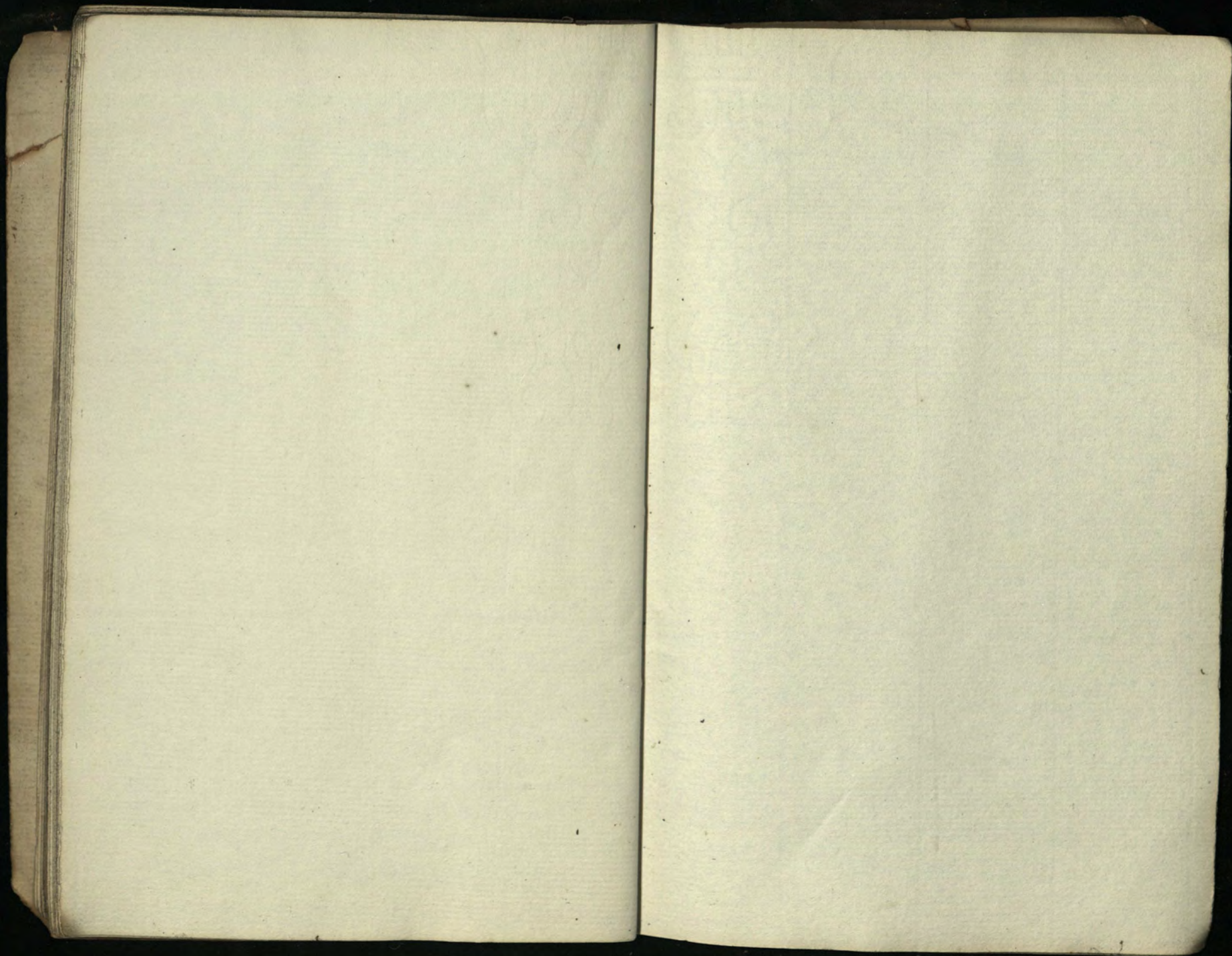












A number of blank pages follow
and have not been photographed.

