

Geo. Addl. 1955. 27/6

(Sent by Lord Chamberlain's office, 1950)

Two Copies, in Books, enclosed to John
 Bridwell Esq. at the Foreign Office
 January 21st 1834.

Inventory
 of a Service of Plate belonging to
 His Majesty
 for the use of the
 British Embassy at Lisbon
 1834

a Steel Copy prepared at the
 Foreign Office, was certified like this
 and returned to John Bridwell Esq. with the
 Book list which accompanied it,
 February 11th 1834

Chest No. 2

	oz	dents
✓ 2 Soup Ladles, W ^o	17	13
✓ 8 Sauce D ^o .	19	18
✓ 12 Gravy Spoons.	51	
✓ 96 Table D ^o .	293	4
✓ 72 Dessert do.	112	14
✓ 96 Tea D ^o .	79	5
✓ 2 Salad Forks & Spoons	26	14
✓ 4 Ice Spades	24	14
✓ 6 Cream Ladles	10	19
✓ 6 Sugar D ^o .	10	10
✓ 2 D ^o Tongs	4	7
✓ 2 Grape Nippers	7	10
✓ 1 Fish Knife	6	
✓ 1 Ass ^o Tongs	6	18
✓ 2 Marrow Spoons	4	

Forward oz 675 dents 6

	oz	dwt
Bro ^t forward - -	675	6
✓ Chest No 3		
✓ 18 Doz ⁿ Table Forks,	661	3
✓ 5 Doz ⁿ Dessert do,	98	-
✓ 18 Salt Ladles, - -	11	5
✓ 2 Mustard Pot ^s - - -	2	-
✓ 12 Wine Labels - - -	8	3
✓ 14 Doz ⁿ Table Knives	158	12
✓ 4 Doz ⁿ steel bladed Pot ^s	29	-
✓ 4 Doz ⁿ Silver D ^o D ^o	76	14
✓ 6 pr Carvers - - -	16	10
✓ oz	1736	13



This is to certify that the foregoing Articles of Plate have been completed, each Piece Engraved with The Royal Crest, Crown and Garter in the front, and were shipped on the 23^d day of January 1828 on Board the Flora, Captain Saunders bound for Lisbon, each Case addressed to "His Excellency The R. Hon^{ble} Sir Frederick J. Lamb, K. B. His Britannic Majesty's Ambassador Extraordinary, and Plenipotentiary at the Court of Portugal, &c &c, Lisbon."

Wm Bennett
Jewel Office in the Department of the
Lord Chamberlain of His Majesty's
Household January 21st 1834



	R ^d d ^{ts}
✓ Bro ^t forward 173613	
✓ Chest No 1.	
✓ 120 th Table Plates	
✓ Voz th	
✓ No 1.	15 12
✓ 2.	16 13
✓ 3.	16 2
✓ 4.	16 18
✓ 5.	16 16
✓ 6.	17 5
✓ 7.	16 6
✓ 8.	17 1
✓ 9.	16 11
✓ 10.	16 14
✓ 11.	16 14
✓ 12.	16 9
✓ 13.	15 17
✓ 14.	16 8
forward	1967 19

	£	diets
Bro ^d forward	1967	19
✓ N ^o 15 Table Plate	16	10
✓ 16 " " " " " "	17	10
✓ 17 " " " " " "	16	15
✓ 18 " " " " " "	16	9
✓ 19 " " " " " "	16	7
✓ 20 " " " " " "	16	8
✓ 21 " " " " " "	16	7
✓ 22 " " " " " "	16	19
✓ 23 " " " " " "	16	16
✓ 24 " " " " " "	15	19
✓ 25 " " " " " "	16	5
✓ 26 " " " " " "	16	14
✓ 27 " " " " " "	16	9
✓ 28 " " " " " "	17	2
✓ 29 " " " " " "	15	9
✓ 30 " " " " " "	16	9
✓ 31 " " " " " "	17	3
✓ 32 " " " " " "	16	13
✓ 33 " " " " " "	16	15

forward £ 228⁹

	£	d	ts
Brought forward	22	8	18
✓ No 34 Table Plate	16	10	
✓ 35 " "	16	5	
✓ 36 " "	16	12	
✓ 37 " "	16	4	
✓ 38 " "	16	7	
✓ 39 " "	16	3	
✓ 40 " "	16	3	
✓ 41 " "	16	15	
✓ 42 " "	16	18	
✓ 43 " "	16	11	
✓ 44 " "	16	6	
✓ 45 " "	16	6	
✓ 46 " "	16	10	
✓ 47 " "	17		
✓ 48 " "	16	7	
✓ 49 " "	15	16	
✓ 50 " "	17	4	
✓ 51 " "	16		
✓ 52 " "	16	4	
Forward	259	19	

	<i>oz</i> <i>dents</i>
Brot ^t forward	259 1/4 19
✓ N ^o 53 Table Plate	16 6
✓ 54	16 9
✓ 55	15 19
✓ 56	16 14
✓ 57	16 2
✓ 58	16 10
✓ 59	16 9
✓ 60	16 12
✓ 61	16 8
✓ 62	16 14
✓ 63	17
✓ 64	17 2
✓ 65	16 11
✓ 66	16 8
✓ 67	17 8
✓ 68	16 7
✓ 69	16 12
✓ 70	16 19
✓ 71	16 13
forward	<u>2910 2</u>

	ozs dets
Brot forward	2910 2
✓ No 72 Table Plate	15 19
✓ 73 " " " "	16 14
✓ 74 " " " "	16 5
✓ 75 " " " "	16 5
✓ 76 " " " "	16 6
✓ 77 " " " "	16 10
✓ 78 " " " "	16 16
✓ 79 " " " "	16 9
✓ 80 " " " "	16 15
✓ 81 " " " "	16 5
✓ 82 " " " "	16 9
✓ 83 " " " "	16 4
✓ 84 " " " "	16 10
✓ 85 " " " "	16 11
✓ 86 " " " "	16 5
✓ 87 " " " "	16 17
✓ 88 " " " "	16 14
✓ 89 " " " "	16 1
✓ 90 " " " "	16 6
forward	ozs <u>3222 3</u>

	£	d	cts
Brotford?	3	222	3
✓ No 91. Table Plate	16	12	
✓ 92 -- " --	16	10	
✓ 93 -- " --	16	1	
✓ 94 -- " --	16	12	
✓ 95 -- " --	16	10	
✓ 96 -- " --	16	8	
✓ 97 -- " --	16	11	
✓ 98 -- " --	16	9	
✓ 99 -- " --	16	9	
✓ 100 -- " --	16	5	
✓ 101 -- " --	16	8	
✓ 102 -- " --	16	19	
✓ 103 -- " --	16	4	
✓ 104 -- " --	16	5	
✓ 105 -- " --	16	14	
✓ 106 -- " --	16	6	
✓ 107 -- " --	15	15	
✓ 108 -- " --	16	6	

forward O^{c} 3517 7

	oz	dents
Brot forward	35	17 7
No 109 Table Plate	17	2
✓ 110	16	11
✓ 111	16	9
✓ 112	17	
✓ 113	16	17
✓ 114	16	8
✓ 115	16	8
✓ 116	16	9
✓ 117	16	3
✓ 118	16	3
✓ 119	16	11
✓ 120	16	5

✓ 42 Soup Plates

✓ No 1 Soup Plate	18	11
✓ 2	18	5
✓ 3	19	7

forward oz 377 16

	£	s	d	cents
Bro th forward	37	7	1	16
No 4 Soup Plate	19	12		
✓ 5 -- "	18	11		
✓ 6 -- "	18	1		
✓ 7 -- "	18	16		
✓ 8 -- "	19			
✓ 9 -- "	19	1		
✓ 10 -- "	18	7		
✓ 11 -- "	18	4		
✓ 12 -- "	19	6		
✓ 13 -- "	19	7		
✓ 14 -- "	18	2		
✓ 15 -- "	18	9		
✓ 16 -- "	19	14		
✓ 17 -- "	18	18		
✓ 18 -- "	18	1		
✓ 19 -- "	17	17		
✓ 20 -- "	19	6		

forward £ 4090 8

	£	s	d	cts
Brotford	4	0	0	8
✓ 21 Soup Plate	18	15		
✓ 22 " "	18	5		
✓ 23 " "	18	8		
✓ 24 " "	18	19		
✓ 25 " "	18	6		
✓ 26 " "	18	5		
✓ 27 " "	18	10		
✓ 28 " "	18	13		
✓ 29 " "	18	9		
✓ 30 " "	19	9		
✓ 31 " "	18	1		
✓ 32 " "	18	13		
✓ 33 " "	18	11		
✓ 34 " "	18	13		
✓ 35 " "	18	18		
✓ 36 " "	19	3		
✓ 37 " "	18	18		

forward £ 440 7 4

~~03~~ diots

	Broth forward	4407 4
	N ^o 38 Soup Plate	19 3
✓	39 " " " "	18 11
✓	40 " " " "	18 11
✓	41 " " " "	19 7
✓	42 " " " "	18 16

Chest N^o 4

✓ 16 Oval Table Dishes

Vizt

✓	N ^o 1 A 23 1/2 Inch Dish	110 2
✓	2 9 ^o " 9 ^o "	116 3
✓	3 A 22 Inch do	92 10
✓	4 9 ^o " 9 ^o "	94 6
✓	5 A 20 Inch - d ^o -	70 5
✓	6 9 ^o " do -	73 4

forward 0^z 5058 2

		£	s	d	cts
	Brot four ^d ..	5	0	5	8 2
✓ No 7	A 19 Inch Dish ..		6	7	4
✓ 8	D ^e .. D ^e ..		6	6	19
✓ 9	A 16 .. D ^e ..		4	8	18
✓ 10	D ^e .. D ^e ..		4	5	9
✓ 11	D ^e .. D ^e ..		4	6	5
✓ 12	D ^e .. D ^e ..		4	6	10
✓ 13	D ^e .. D ^e ..		4	4	9
✓ 14	D ^e .. D ^e ..		4	3	18
✓ 15	D ^e .. D ^e ..		4	4	10
✓ 16	D ^e .. D ^e ..		4	5	3

8 Plated Covers for the
 ✓ Table Dishes ..

8 chased Silver Royal
 ✓ Best handles for do } 85

forward £ 5642 7

oz duets

Brot forward 5642 7

✓ Chest No 5

✓ 8 chads Wine Coolers

✓ Vigt

✓ No 1	103 11
✓ 2	107 10
✓ 3	106 13
✓ 4	106 14
✓ 5	104 3
✓ 6	105 2
✓ 7	103 13
✓ 8	103 15

4 Gilt Saucers for Ice

✓ Creams for the above, Vigt

✓ No 1	10
✓ 2	9 14
✓ 3	9 12

forward 0/2 6512 14

	£	s	d	cts
Bro ^t forward	6	5	2	14
✓ No 4 Saucer		9	13	
/				
2 Soup Tureens with ✓ Crest handles				
✓ No 1		14	9	12
✓ 2		15	3	14
/				
✓ 8 Sauce Boats, No 3				
✓ No 1		14		
✓ 2		13	7	
✓ 3		13	16	
✓ 4		13	17	
✓ 5		13	18	
✓ 6		13	12	
✓ 7		13	14	
✓ 8		14	1	
/				
✓ No 1 Cruet Frame, 4 Bottles		32		1
✓ 2 Do Do 6 do		25		3
forward	£	6	9	3 2

		03 dwts
Brought forward		6993 2
18 Salt cellars, with		
✓ divisions, vizt.		
✓ No 1	9 4
✓ 2	8 19
✓ 3	8 17
✓ 4	9 1
✓ 5	9 2
✓ 6	9 8
✓ 7	8 19
✓ 8	8 19
✓ 9	9 2
✓ 10	9 5
✓ 11	9 10
✓ 12	9 5
✓ 13	8 19
✓ 14	9 1
✓ 15	9 3
✓ 16	9 4
✓ 17	9 1
forward		03 7148 1

	s ^d cents
Bro ^t forw ^d . . .	7140 1
✓ No 18 Salt cellar . . .	9 3
/	
✓ 6 Round Hand Waiters	
✓ No 3 A 10 Inch D ^o . . .	23 4
✓ 4 D ^o . . . D ^o . . .	23 13
✓ 5 A 9 Inch do . . .	18 14
✓ 6 D ^o . . . do . . .	18 11
✓ 7 An 8 Inch do . . .	13 13
✓ 8 D ^o . . . do . . .	14 5

✓ Chest No 6

10 Round deep Dishes	}	
✓ Covers, w th Crest handles		
✓ No 1		72 16
✓ 2		73 2
✓ 3		72
✓ 4	73	
forward		7560 2

	£	s	d	ob
Prot. forward.	75	60	2	
✓ No 5. Round dish & Cover.	72	10		
✓ 6 " " " "	72	13		
✓ 7 " " " "	72	15		
✓ 8 " " " "	73	3		
✓ 9 " " " "	73	6		
✓ 10 " " " "	73	15		

10. Round deep Dishes

✓ without Covers				
✓ No 11.	32	14		
✓ 12.	32	17		
✓ 13.	33	6		
✓ 14.	34	3		
✓ 15.	33	10		
✓ 16.	33	10		
✓ 17.	33	12		
✓ 18.	33	12		
✓ 19.	34	5		
✓ 20.	33	12		

forward £ 8333 5

03 sheets

Brought forward 0333 5

1 Stand & Lamp for		
✓ 2000 deep Dish	}	28
10 Plated Warmers		
✓ for the 2000 deep Dishes	}	

Chest No 7

8 14 Inch chased Table		
✓ Candles ticks		
✓ No 1	.	55 14
✓ 2	.	52 9
✓ 3	.	52 2
✓ 4	.	52 17
✓ 5	.	52 5
✓ 6	.	52 13
✓ 7	.	51 16
✓ 8	.	51 10

forward 0782 11

	oz	dwt
Brought forward	87	11
8 chased 3 light Branches for the 14 Inch Cand ^{ls}		
✓ No 1	52	8
✓ 2	52	15
✓ 3	53	10
✓ 4	52	8
✓ 5	52	17
✓ 6	53	
✓ 7	53	3
✓ 8	53	
✓ 4 Chased 12 Inch Cand ^{ls}		
✓ No 9	42	7
✓ 10	39	10
✓ 11	39	19
✓ 12	41	13
✓ No 1 A 22 Inch round Silver	167	18
✓ 2 A do do	152	4
✓ 9 An 18 Inch d ^o	85	13
forward	978	16

	Pounds	Shillings	Pence
Brought forward	97	84	16
✓ No 1 A Coffee Pot	32		8
✓ 2 D ^o D ^o	26		2
✓ No 1 A Sugar Bason	15		4
✓ 2 D ^o D ^o	15		3
✓ No 1 A Cream Ewer	8		13
✓ 2 D ^o D ^o	8		1
	<hr/>		
	98	90	7

This is to certify, that
the foregoing Articles of
Plate have been completed
each piece weighed, marked
and Engraved with the
Royal arms in front, and
at the back, an Inscription
stating that it belongs to


His Majesty's Embassy at
Lisbon, and was shipped
the 10th Jan^y 1834
on board the "Confiance"

Steam Packet, Lieut^{nt} Waugh,
addressed to the R^t Hon^{ble}
Lord Howard de Walden,

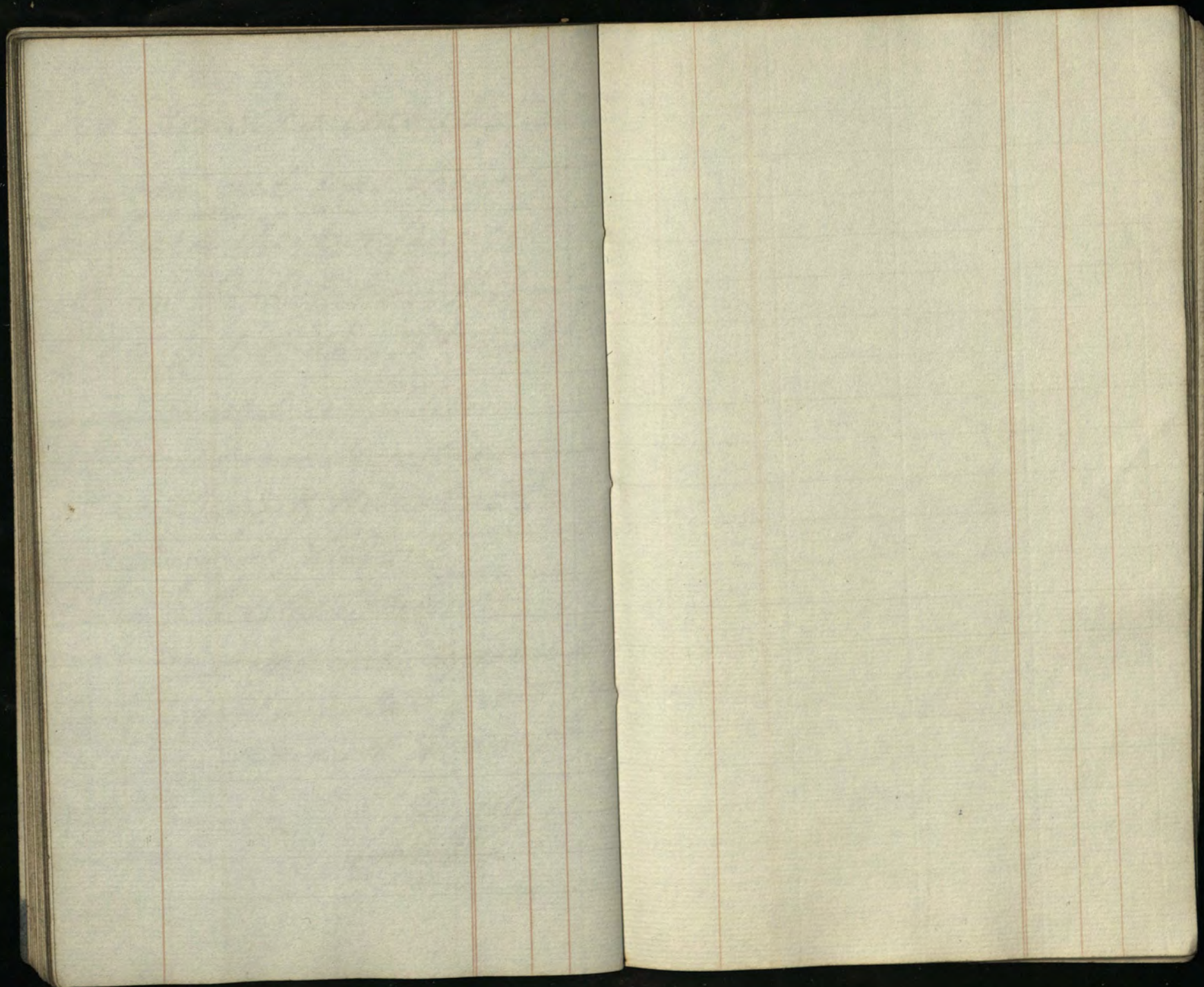
His Britannic Majesty's Envoy
Extraordinary & Minister Plen-
ipotentiary at Lisbon. . . .

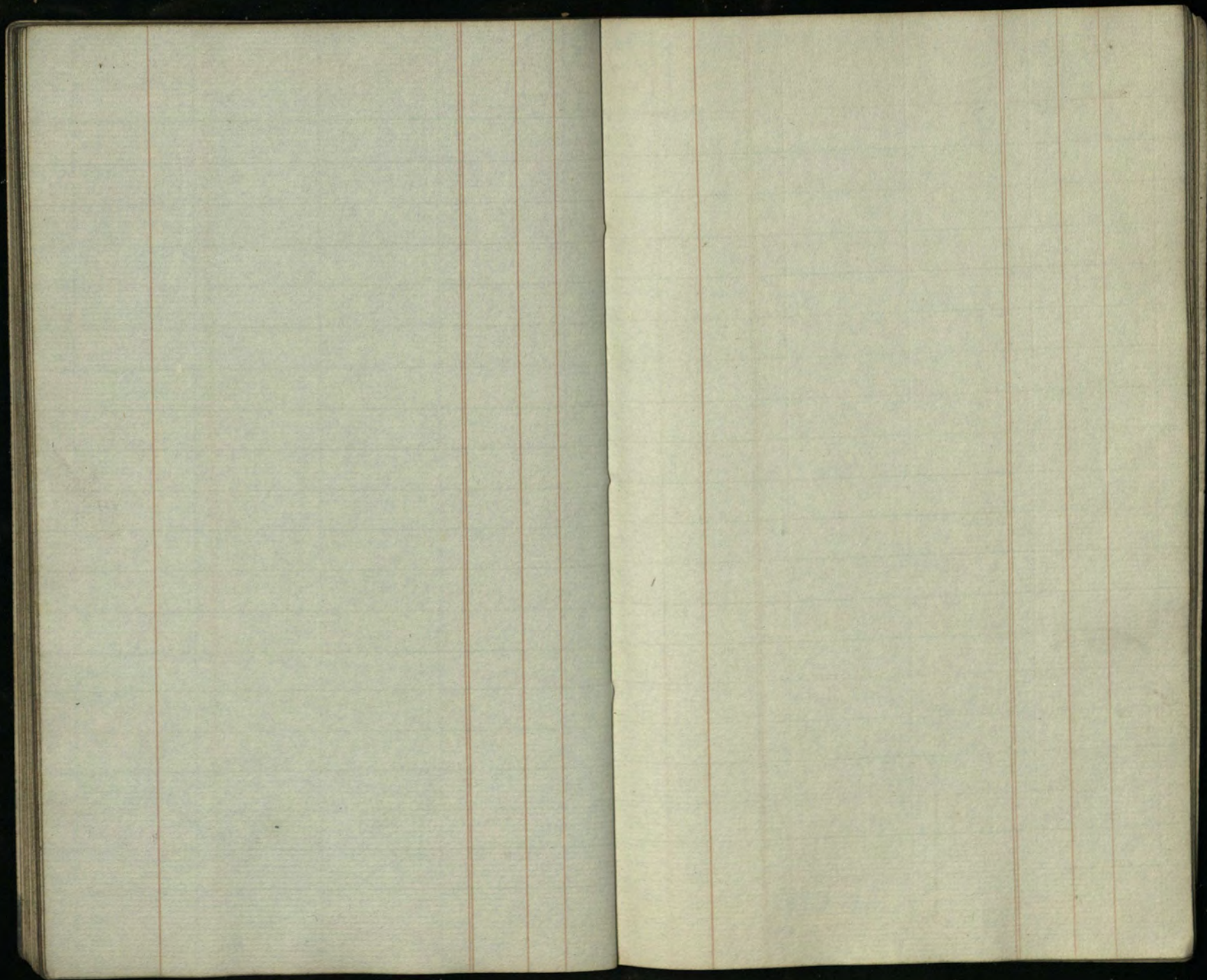
W^m Bennett

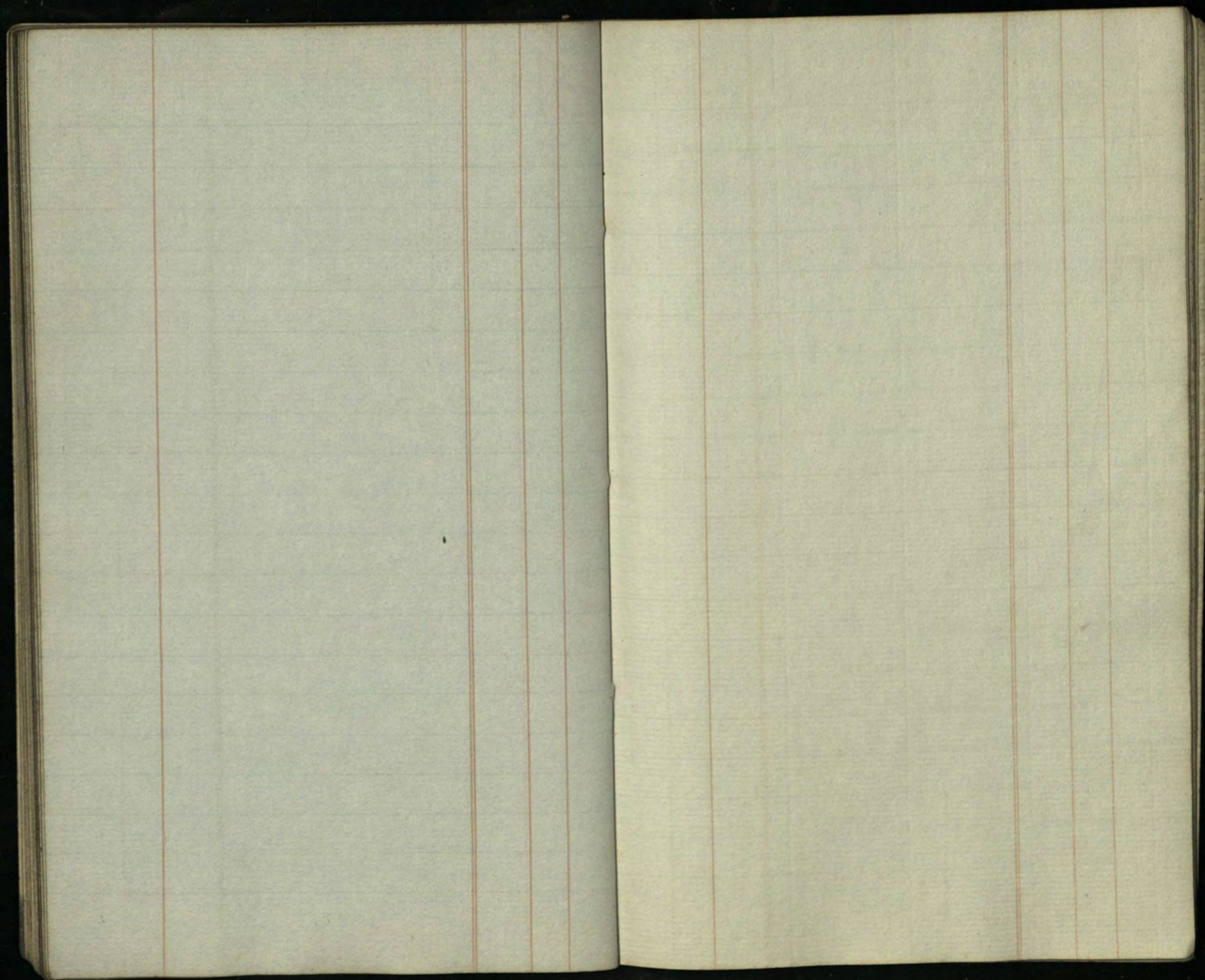
Jewel Office in the Department
of the Lord Chamberlain of His
Majesty's Household January 21st
1834

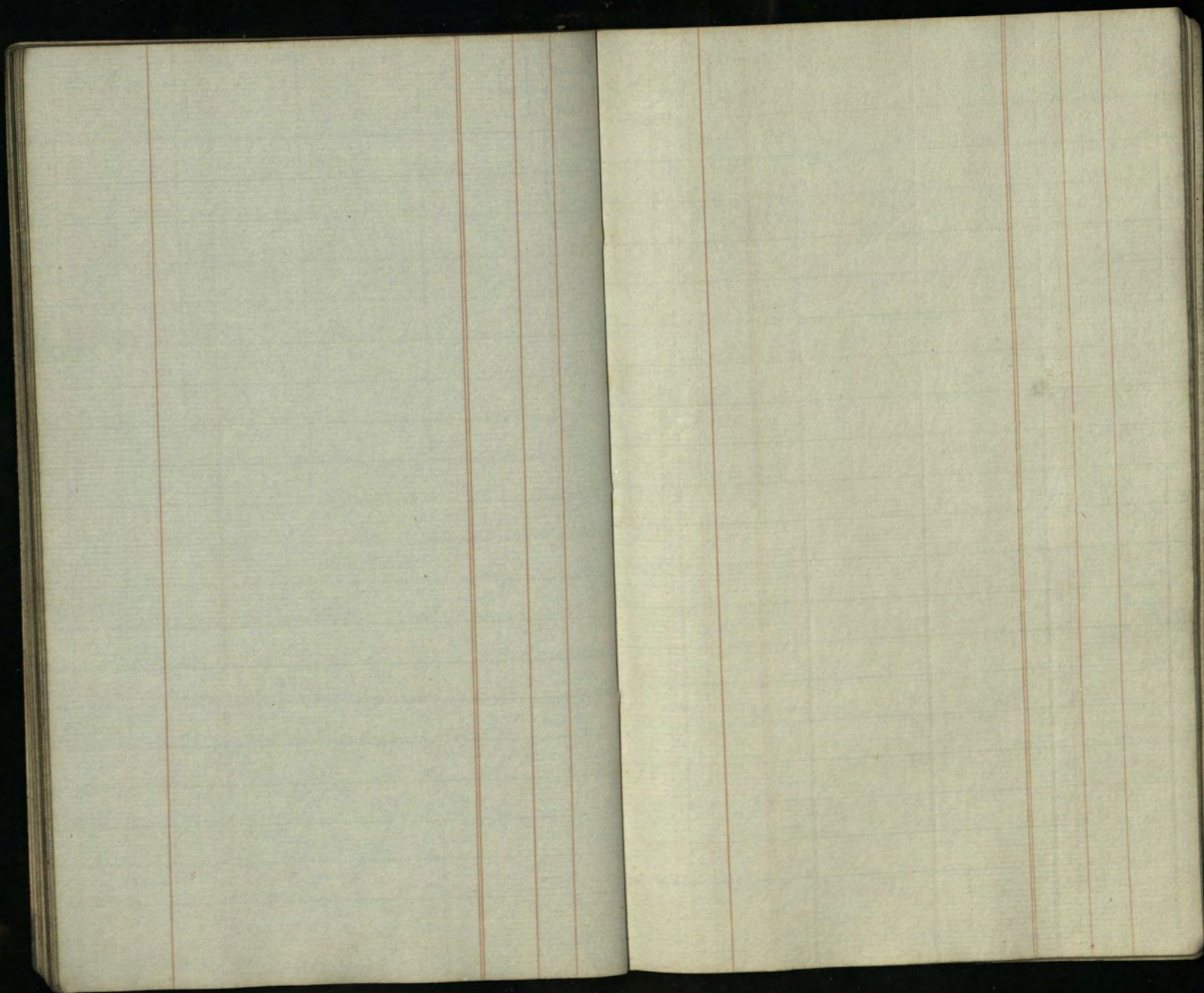


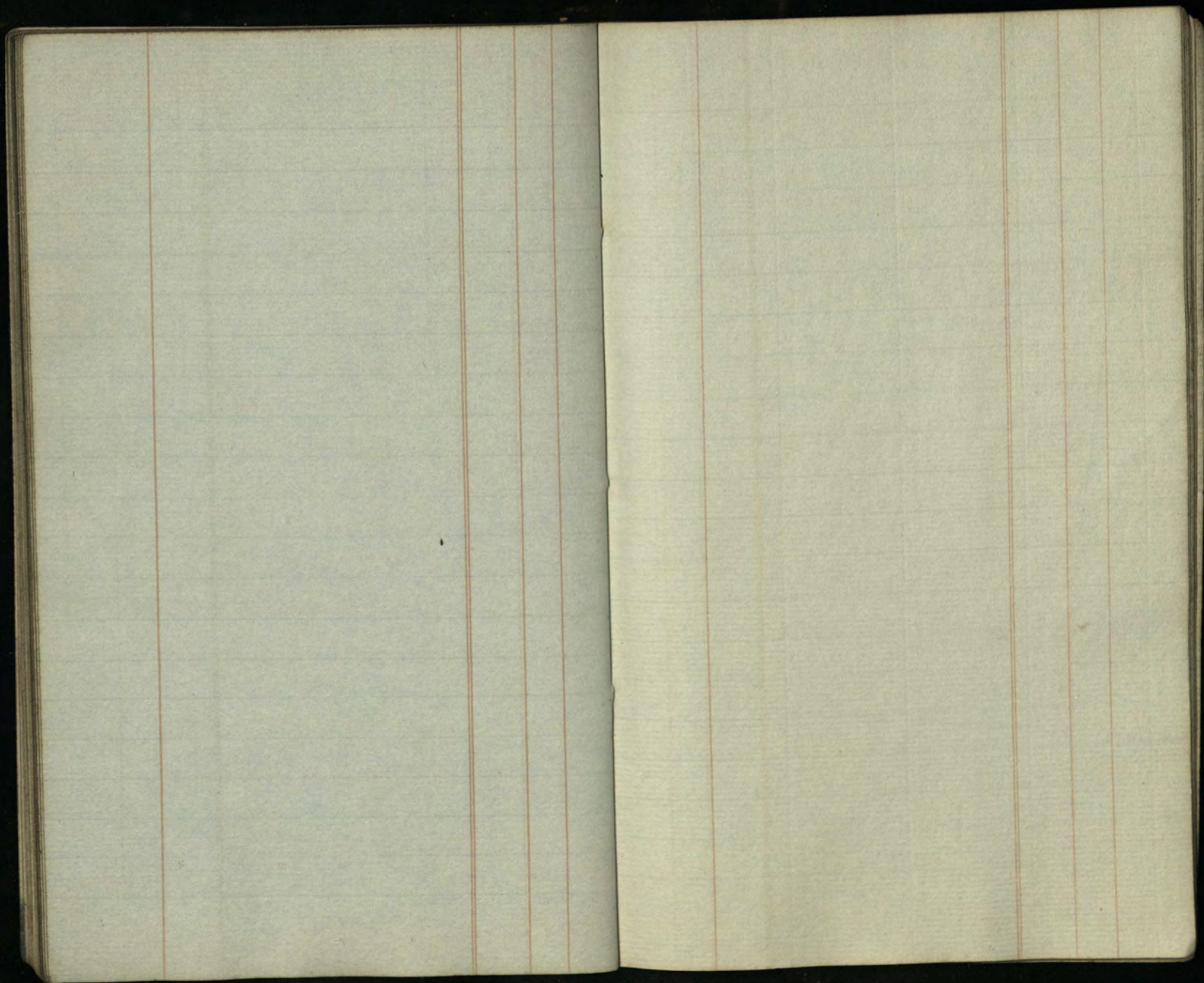
~~Wm Bennett~~











**A number of blank pages follow
and have not been photographed.**

