

Portugal

is bounded on y.^e N. by Galicia.
On y.^e E. by Leon, Extremadura, &
Andalusia. On y.^e S. & on y.^e W. by
y.^e Atlantick Ocean.

Portugal extends from y.^e 37. Deg.
to y.^e 42. N. latitude, & between
y.^e 7. & 10. Deg. of Longitude from y.^e
Meridian of London to y.^e W.

Its great Rivers are 1. y.^e Minho
2. y.^e Douro. 3. y.^e Tagus. on which
Lisbon y.^e Capital is built. 4. y.^e
Guadiana. All these Rivers come out
of Spain & Run into y.^e Atlantick
Ocean.

It is divided into 1. Extremadura.
2. Beira. 3. Entre-Minho-Douro. 4. Tral-os-
Montes. 5. Alentejo. 6. y.^e R. m. of Algarve.

It is a very Mountainous Countrey
wherefore in y.^e most plentiful
years it does not produce Corn
enough for y.^e subsistence of its
natives, when they cannot get
it from y.^e Neighbouring provinces
of Spain, it is brought them by
y.^e English & Dutch.

y.^e Peasants live on Maize, or Indian
Corn, a coarse food.

Their Pasture is bad except towards
y.^e N. parts; consequently their Cattle
is dry & lean, but there is so little
of it y.^e Common People have
it but seldom.

Their fruits in general are ^{not so} good
as those in y.^e S. parts of Spain,
Both their Wine & fresh Water
fish is good.

y.^e Portuguese chiefly trade in their
 Wines, Oil, Oranges &c. they import
 silks, Muslin, &c. from Asia. Gold,
 silver, ~~tin~~ &c. from Africa.
 from y.^e Brazil some years 2. 000.000.
 sterling in Gold, silver, & sugar.
 in return for their Wines, fruits,
 & y.^e produce of their plantations,
 they get from Britain Woolen Cloths,
 Lead tin, part of which they use &
 y.^e rest they send to y.^e Brazil
 y.^e Dutch furnish them with
 Linen, Woolen Cloths, Stuffs, Corn, Copper,
 Iron, & Naval Stores from y.^e N.
 H. ms. of Europe. They trade also
 very much with France. y.^e trade
 with y.^e Portuguese, is y.^e least
 advantageous y.^e English have
 except with their own Plantations

2474

Portugal

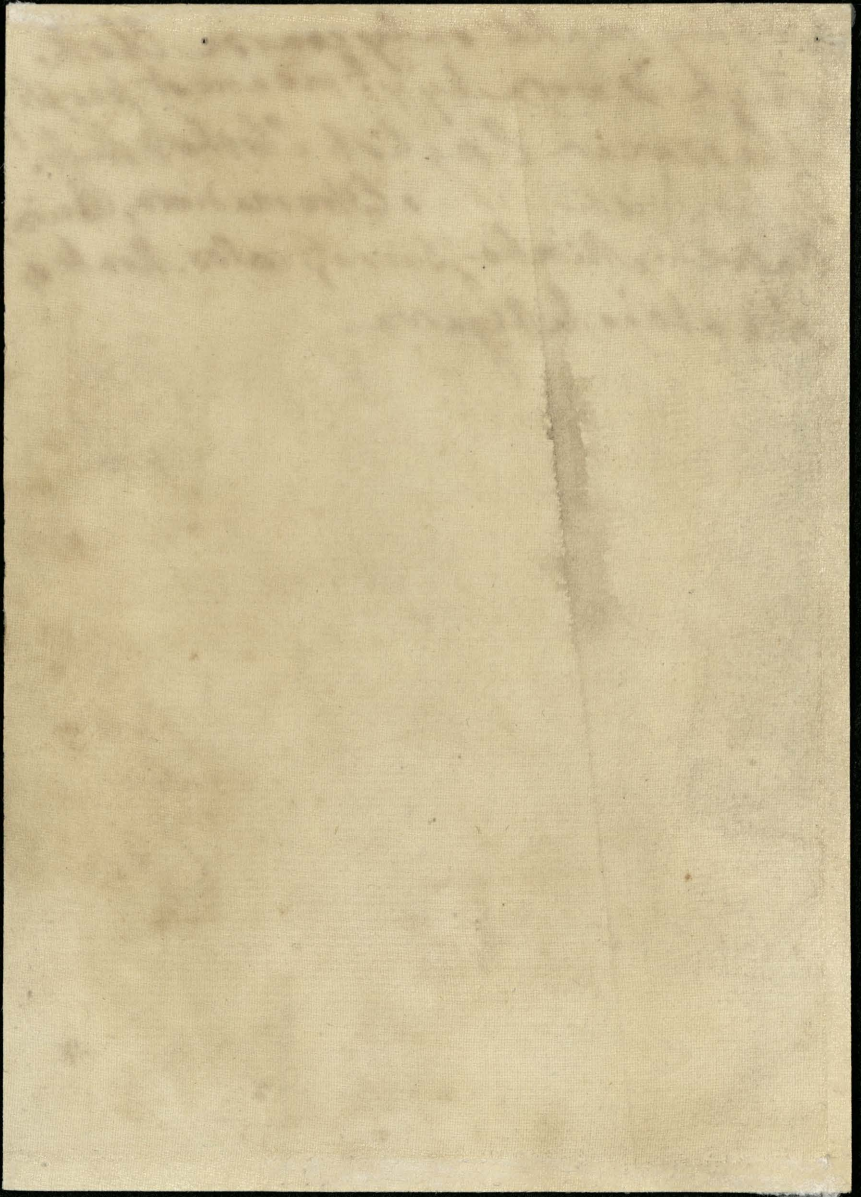
is bounded on y.^e N. by Galicia, on y.^e E.
by Leon, ~~Salamanca~~, & Andalusia.
On y.^e S. & W. by y.^e Atlantick Ocean.

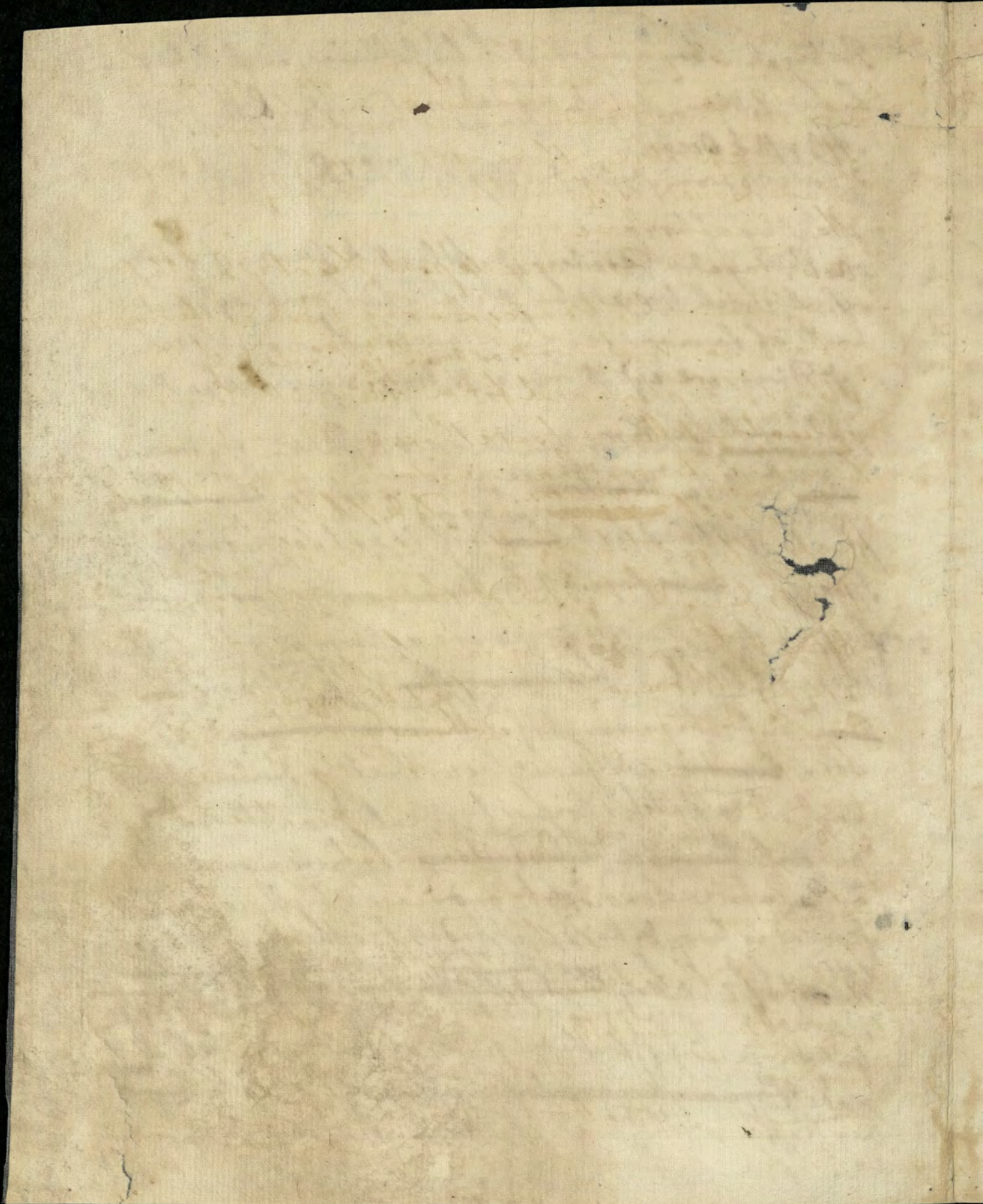
It extends from 27 Deg. to y.^e 42. N. Latitude
& ^{between 27^e & 42^e North} from y.^e 4. Deg. to y.^e 14. Deg. of Longitude
from y.^e Meridian of London to y.^e W.

It is a very Mountainous Country
but in y.^e plains there are good
vineyards. y.^e Soil produces a great
quantity of Wines, but they do not make
such good Wine as in Spain. They abound
in Oranges & Lemons, their wine
one's which were brought from thence
are as good as any in Europe. but their
sour One's are not so good as those
from Seville. They have great
Plantations of Mulberry Trees
which feed great numbers of silk
Worms. They have not Wheat &
Barley enough for y.^e Subsistence
of y.^e People in y.^e most fertile

for they make only coarse^r Cloths
which is worn by y^e meanest people
others wear English Cloths & stuffs.
Portugal is divided into Estremadura, Beira
Entre - Minho - Duero, Trallos Montes,
Alentejo, & Algarve.

GEO. ADDL MSS 32 (2475)





It is said that there are gold & silver mines in this Kingdom; but they have not been open'd for several years, ^{at} they ~~import~~ ^{bring} ~~to~~ ^{quantities of} gold every year, from the Coasts of Africa & Brazil, there are mines of Lead, Iron & allum, & quarries of marble with crystal, Rubies & other precious Stones.

As to Trade of Portuguese export their Red & White Port Wine, oil, Oranges, Lemons, figs &c. they import from Asia such goods as our E. I. Co. do. & Gold, Slaves, & Elephants both from Africa; but their most valuable settlements are those of Brazil in S. America, from whence in some years they bring upwards of ~~two millions~~ ^{two millions} in gold & silver, besides great cargoes of sugar, tobacco, dying woods, skins, Cotton, Sallow, &c. & it is said that they carry there from Africa between 20, & 30,000. Slaves yearly who are worth one with another 10, or 12.

The Portuguese get cloth, lead & tin, in return for their Wines, & of produce of their plantations, from England; which they use partly at home, & of rest they send to Brazil, in some years they have corn & meat from Ireland; of Dutch import ^{by the way} Linen, cloth, Corn, copper & Iron, from the Northern & ms. of Europe; The Portuguese have also a great trade with France, but in all of accounts of the Merchant ships at anchor at Lisbon, we find above two thirds of them, are British.

Portugal
+ is divided into 6. Prov. viz. 1. Trallos Montes, 2. Entre-
Minho-Douro, 3. Beiras, 4. Estremadura, 5. Alentejo, &
6. Algarva.
Lisboa is the capital of this & is famous for its extensive
trade, & for its melancholy Earthquake, yt. in 1755.
destroy'd almost the whole of yt. healthy City.

eat Hogs & kids; ~~and~~ ^{being but} ~~the~~ ^{light} ~~is~~ ^{for} ~~the~~ ^{billage}
mules are chiefly used in carriages, ~~and~~
~~of~~

is bound. on y^e N. by y^e N. l. on y^e E.
by y^e G. Ocean. on y^e S. by y^e B. G.
& on y^e W. by y^e S. l.

It extend from y^e 4th to y^e 7th Deg. of
N. Lat^d & from y^e 4th to y^e 7th Deg. of long.
from y^e N. of Lon. to y^e W.

Its great Rivers are 1. y^e Tay
2. y^e Tweed. 3. y^e Humber. 4. y^e Thames
which runs by Lon. 5. y^e Severn.

It is divided into ~~2~~ ³⁰ ~~Counties~~
$$\begin{array}{r} 30 \\ 41 \\ \hline 71 \end{array}$$
 Counties

London is y^e Cap. in y^e C. of Mid.

The riv^s & Is. belong. to E. are
y^e 8. Feroe Isles. 2. Shetland Is. Orkney
4. Skie & Bute. 6. Man. 7. Anglesey
8. Sully 9. Jersey. 10. Jersey. 11. Sark
12. Alderney.

It is well situated for Trade
being an Island.

Its Trade is very considerable
with the Colonies in N. Am^a
with Portugal y^e E. Indies
&c.

Wool is in no Country so
fine & y^e Cloth are finer
than of any Nation, y^e pasture
& good & it produces such
immense quantities of Corn
y^t it furnishes other Countries
to y^e amount of yearly
y^e Country is so charmingly
situated y^t some of the
is always beautiful.

Portugal

is bounded on y^e N. by Galicia, On
y^e E. by Leon, Extremadura, and
Andalucia. On y^e S. & W. by y^e
Atlantic Ocean.

Portugal extend from y^e 37. Deg.
to y^e 42. N. Latitude, & between y^e
7. & 10. Deg. of Longitude from y^e
Meridian of London to y^e W.

It is a very Mountainous
Country, but in y^e plains there are
good Vineyards. It produces great
quantities of Olives, but yet y^e Oil
is not so good as y^t made in Spain
It abounds in Oranges & Lemons,
their sweet Oranges which come
originally from China are as good
as any in Europe, but their sour
ones are so comparable to those of
Seville. It is greatly planted with
Mulberry Trees, which feed great
numbers of Silk Worms, with which
as well as honey they greatly Trade

It does not give Corn enough for
y^e Subsistence of its Natives in
y^e most plentiful years. When
Portuguese cannot have Corn
from y^e neighbouring provinces of
Spain, it is bought either of y^e
English or Dutch.

Their Peasants live on Maize,
or Indian Corn, a coarse food.

Their pasture is very bad except
towards y^e N. parts. consequently
their Cattle is lean & dry. But there
is so little of it, y^t y^e Common People
love

