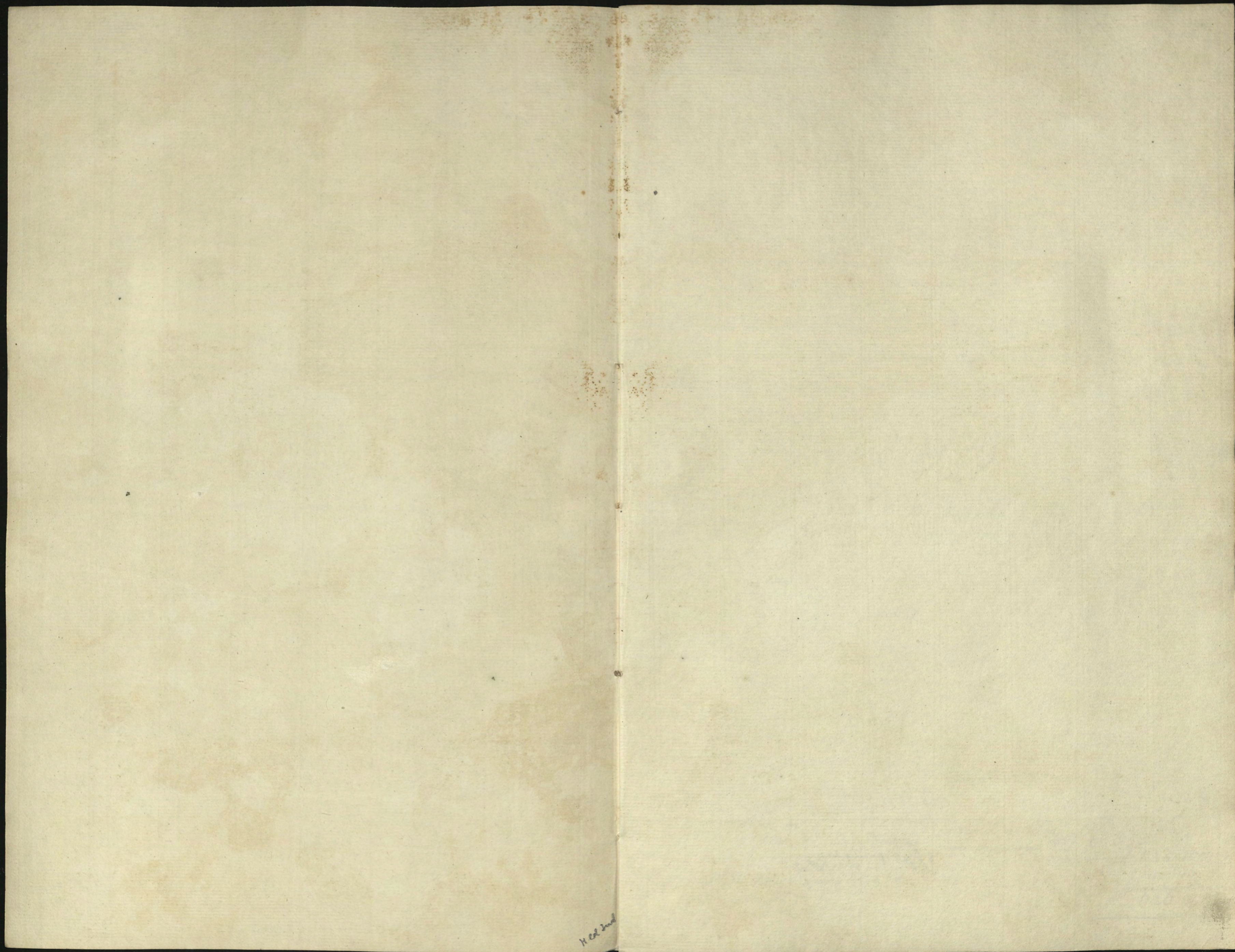


— Allowances Box 6/12a  
to the late Governors, Servants &c of  
— Their Royal Highnesses, —  
The Dukes of Clarence, Kent, Cumberland,  
— Sussex and Cambridge. —  
— Receipts and Payments —  
for the two Quarters ended 5<sup>th</sup> of April, —  
— and 5<sup>th</sup> of July 1806.  
M<sup>r</sup>. Andrew Dickie. —



H. ed. 2nd

*Faint, illegible handwriting, likely bleed-through from the reverse side of the page.*

<i>Property</i>	$\frac{200}{12} = 16.66$	$187.10$	$187.10$
<i>Extras</i>			$645.10.9$
<i>M<sup>r</sup> W. Lewis</i>	<i>Journey Exp<sup>t</sup> to Ken</i>		$10.6$
			$646.1.3$

*Please turn over*

Accountant's State of the Receipts, and Payments made to the late Governors, Servants &c of

Their Royal Highnesses The Duke of Clarence, Duke of Kent, Duke of Cumberland, Duke of Sussex and Duke of Cambridge. — One Quarter ended 5<sup>th</sup> of April 1806.

Abstract.	Receipts.			
1806 July 7 <sup>th</sup>	Balance of the late General Hotham's Super <sup>o</sup> Account B. at Mess <sup>rs</sup> J. Coult's & C <sup>o</sup> transfer'd to Mr. Andrew Dickie; to whom His Majesty has been graciously pleas'd to commit the future management of these Accounts.	25	1	3
" July 9 <sup>th</sup>	Receiv'd of Charles Cracroft Esq <sup>r</sup> Husband of the 1/2 p Cent Duties the Amount of His Majesty's Warrant for £688. 11. 3 and £26. 19 to satisfy the Civil List Duty Stamps &c for the Quarter ended the 5 <sup>th</sup> of April 1806. £709. 10. 3			
	Treasury Stamp £. 12. 6			
	Civil List . . . . . 17. 14. 9			
	Property Tax 6 1/2 p Cent 13. . . . 6			
	Receipt Stamps . . . . . 5. 8			
	62. 13. 5	646	16	10
		£ 671 18. 1		

	Payments.			
"	One Quarter's Pensions & Allowances to 5 <sup>th</sup> April 1806 £458. . . . . 9			
"	Allowance to Mr. Andrew Dickie, for making out the Accounts for upwards of Eight years . . . . . 187. 10. —	645	10	9
"	Extras . . . . . — 10. 6			
		646	1	3
1806 July 23 <sup>rd</sup>	Balance remaining on this Account at Mess <sup>rs</sup> Tho. Coult's & C <sup>o</sup> in Mr. A. Dickie's name. } £ 25. 16. 10			

This Account was examined and compared with the Vouchers the 23<sup>rd</sup> day of July 1806 by me, Andrew Dickie.

I allow this Account, —

	Payments.			
— Governors —				
	General George Hotham dec <sup>d</sup> 33 days of his Allow <sup>o</sup> of £1000 p Annum from the 5 <sup>th</sup> of January to the 7 <sup>th</sup> of Febr <sup>y</sup> the day of his decease — paid to his Widow and Executrix. £ 90. 8. 2			
	Property Tax 6 1/2 p Cent. . . . . 5. 13. —	84	15	2
	M. General De Bude . . . . . £170. 12. 6			
	Property Tax . . . . . 10. 13. 4	159	19	2
	Horace Hayes Esq <sup>r</sup> . . . . . £ 85. 6. 3			
	Property Tax . . . . . 5. 6. 6	79	19	9
— Page of the back Stairs —				
	Mr. Charles Magnolloy . . . . . £ 38. . . . 6			
	Property Tax . . . . . 2. 7. 6	35	13	—
— Purveyor —				
	Mr. Thomas Tunstall . . . . . £ 12. 3. 9			
	Property Tax . . . . . — 15. 3	11	8	6
— Servants —				
	Mr. John Clement Table Decker . . . . . £ 20. 1. 4			
	Property Tax . . . . . 1. 5. —	18	16	4
	Miss H. Winkworth House keeper . . . . . £ 12. 3. 9			
	Property Tax . . . . . — 15. 3	11	8	6
	Mr. Charles Reimer Page's Man . . . . . £ 9. 15. —			
	Property Tax . . . . . — 12. 2	9	2	10
— Allowance to late Writing Master —				
	Mr. William Palin . . . . . £ 25. . . . .			
	Property Tax . . . . . 1. 11. 3	23	8	9
— Messenger —				
	Mr. Walter Lewis . . . . . £ 25. . . . .			
	Property Tax . . . . . 1. 11. 3	23	8	9
	Mr. Andrew Dickie — Allowance for making out the Accounts in Duplicate Quarterly for upwards of eight years. £ 200. . . . .			
	Property Tax . . . . . 12. 10. —	187	10	—
	Extras . . . . . — 10. 6			
	Mr. W. Lewis Journey exp <sup>t</sup> to Ken . . . . .			
		645	10	9
		— 10. 6		
		£ 646. 1. 3		

Please turn over

Accountant's State of the Receipts and Payments made to the late Governors, Servants &c of  
 Their Royal Highnesses The Duke of Clarence, Duke of Kent, Duke of Cumberland, Duke of Sussex, and Duke of Cambridge. — One Quarter ended 5<sup>th</sup> July 1806.

Abstract.

Receipts.

1806 July 23	Balance remaining of last Account	£ 25 16 10
July 26	Receivd of Charles Cracroft Esq <sup>r</sup> Husband of the 1/2 p Cent Duties the Amount of His Majesty's Warrant for £18.3.1 and £15.1.11 to satisfy the Civil List Duty, Stamps &c for the Quarter ended the 5 <sup>th</sup> of July 1806	£ 33. 5
	Treasury Stamp	£ 1. 12. 6
	Civil List	10. 16. 7
	Property Tax 10 p Cent on £18.3.1	1. 16. 3
	Receipt Stamps	5. 8
	5A. 11.	378 14
		£ 404 10 10

Payments.

One Quarter's Pensions & Allowances to 5 <sup>th</sup> July 1806	376 7	
Extras	3 8 6	
	379 15 6	
1806 Septem <sup>r</sup> 1	Balance remaining on this Account at Mess <sup>rs</sup> T. Coult's & Co <sup>rs</sup> in M <sup>r</sup> A. Dickie's name	£ 24 15 4

This Account was examined and compared with the Vouchers the 1<sup>st</sup> day of Septem<sup>r</sup> 1806 by me  
 Andrew Dickie.

I allow this Account.

George D

Payments.

Governors.

M <sup>r</sup> General De Bude	£ 170 12 6	
Property Tax 10 p Cent	17 1 3	153 11 3
Horace Hayes Esq <sup>r</sup>	£ 85 6 3	
Property Tax	8 10 7	76 15 8

Page of the back Stairs.

M <sup>r</sup> Charles Magnolloy	£ 38 0 6	
Property Tax	3 10 0	3A. A. 6

Purveyor.

M <sup>r</sup> Thomas Tunstall	£ 12 3 9	
Property Tax	1 4 4	10 19 5

Servants.

M <sup>r</sup> John Clement Table Dicker	£ 20 1 4	
Property Tax	2 0 1	18 1 3
Miss H. Winkworth House keeper	£ 12 3 9	
Property Tax	1 4 4	10 19 5
M <sup>r</sup> Charles Reimer Page's Man	£ 9 15 7	
Property Tax	0 19 6	8 15 6

Allowance to late Writing Master.

M <sup>r</sup> William Palen	£ 25 0 0	
Property Tax	2 10 0	22 10 0

Messenger.

M <sup>r</sup> Walter Lewis	£ 25 0 0	
Property Tax	2 10 0	22 10 0

Allowance to Accountant & Paymaster.

M <sup>r</sup> Andrew Dickie	£ 20 0 0	
Property Tax	2 0 0	18 0 0
		£ 376 7 0

Extras.

M <sup>r</sup> W. Lewis Expenses to Ken	10 6	
M <sup>r</sup> Tho <sup>s</sup> Becket Stamps & Stationery	2 18 0	3 8 6
		£ 379 15 6

Faint, illegible text at the top of the left page, possibly bleed-through from the reverse side.

Faint, illegible text in the upper middle section of the left page.

Faint, illegible text in the middle section of the left page.

Faint, illegible text in the lower middle section of the left page.

Faint, illegible text in the lower section of the left page.

Faint, illegible text in the lower section of the left page.

Faint, illegible text in the lower section of the left page.

Faint, illegible text in the lower section of the left page.

Faint, illegible text in the lower section of the left page.

Faint, illegible text in the lower section of the left page.

Faint, illegible text in the lower section of the left page.

Faint, illegible text in the lower section of the left page.

Faint, illegible text in the lower section of the left page.

Faint, illegible text in the lower section of the left page.

Faint, illegible text in the lower section of the left page.

Faint, illegible text in the lower section of the left page.

Faint, illegible text in the lower section of the left page.

Faint, illegible text in the lower section of the left page.

Faint, illegible text in the lower section of the left page.

Faint, illegible text in the lower section of the left page.

Faint, illegible text in the lower section of the left page.

Faint, illegible text in the lower section of the left page.

Faint, illegible text in the middle section of the right page, possibly bleed-through from the reverse side.

