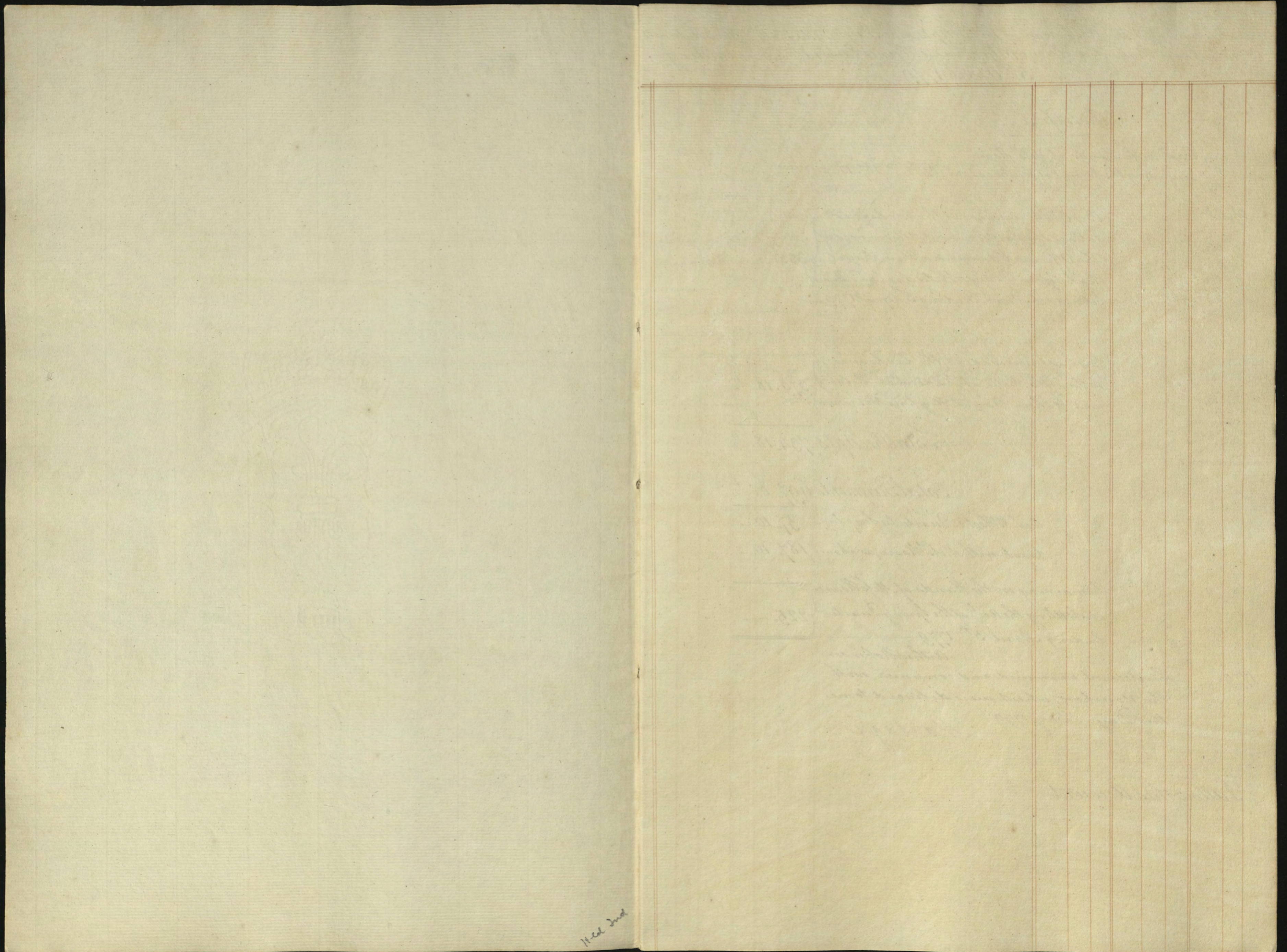
The background of the image is a traditional marbled paper pattern, often called 'stone' or 'shell' marbling. It features large, irregular, light-colored (beige or off-white) spots that resemble stones or shells, set against a dark, swirling background of black, blue, and reddish-brown. The overall effect is a complex, organic, and visually rich texture.

Box 6/6k
Prince William
and
Prince Edward.
Accounts
Quarter Ending
5th April 1779



Head 2nd

The Account of Arthur Robinson, of the Receipts, and Payments made by him in the Account
 of their Royal Highnesses Prince William and Prince Edward, Quarter Ending
 5th April 1779.

Establishment

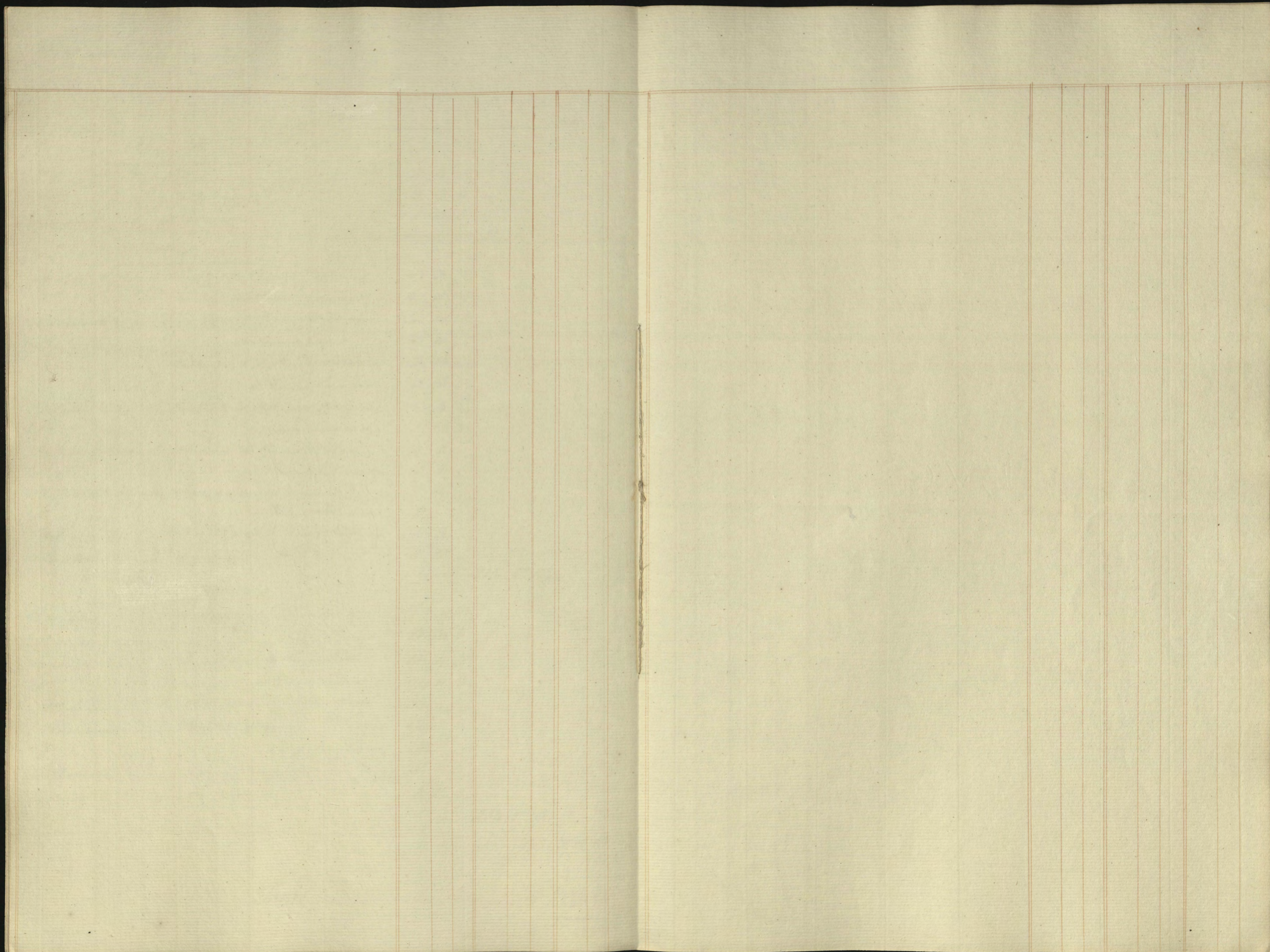
| | | L | S | D |
|-------|--|-----|-----|-----|
| 1779. | <u>Receipts</u> | | | |
| | Cash in the Hands of M ^{rs} . Hoare including the Receipt of Christmas Quar ^{ter} . 1778. | £ | 187 | 10 |
| April | By Cash received at the Exchequer to Pay the Salaries and Allowances of the Officers, & Servants of their Royal Highnesses Prince William and Prince Edward. Quar ^{ter} . Ending 5 th April 1779 | 355 | | |
| May | By Cash received at the Exchequer to Pay the Bills of Tradesmen belong- ing to their Royal Highnesses | 379 | 18 | 1/2 |
| | <u>Total Receipts</u> | 734 | 18 | 1/2 |
| | <u>Total Payments</u> | 697 | 8 | 1/2 |
| | Rev ^d . M ^r . Hoopes Quarterly Surplus | 37 | 10 | |
| | Cash with M ^{rs} . Hoare (as above) | 187 | 10 | |
| | Remaining in the Hands of M ^{rs} . Hoare on settling the Acc ^t . of the Spring Quarter Ending April 5 th 1779 | 225 | | |
| 1779. | This Account examined and compared with the Vouchers, which were deliver'd to me this Day May 1779. Montagu | | | |

I allow this Account.

| | | L | S | D | | | L | S | D |
|---------------------------|--|-----------|---|---|--|--|-----------|----|---|
| | | per Annum | | | | | Quarterly | | |
| | <u>Payments</u> | | | | | | | | |
| | General de Bude | 350 | | | | | 87 | 10 | |
| Instructors | Rev ^d . M ^r . Humphrey | 300 | | | | | 75 | | |
| | Rev ^d . M ^r . Majendie | 200 | | | | | 50 | | |
| Pages of the | Ch ^{ar} . Magnolay | 80 | | | | | 50 | | |
| Back Stairs | Henry Müller | 200 | | | | | 50 | | |
| | for Mourning | | | | | | | | |
| Servant to D ^o | John Hand | 40 | | | | | 10 | | |
| Housekeeper and | M ^{rs} . Seaser | 50 | | | | | 12 | 10 | |
| necessary Woman | | | | | | | | | |
| Three Maid Servants | at 20 each | 60 | | | | | 15 | | |
| Porter | Francis Wintworth | 45 | | | | | 11 | 5 | |
| Watchman | Solomon White | 25 | | | | | 6 | 5 | |
| | <u>Salaries</u> | | | | | | 317 | 10 | |

Bills, and Disbursements

| | | P | S | D | P | S | D | P | S | D |
|--|--------------|----|----|-----|-----|----|-----|-----|----|---|
| | Brought Over | | | | | | | 317 | 10 | |
| <u>Privy Purse.</u> | | | | | | | | | | |
| Disbursed by the Pages | | 4 | 4 | | | | | | | |
| D ^o Housekeeper | | 3 | 3 | 11 | | | | | | |
| Campbell Stationer | | 1 | 44 | 0 | | | | | | |
| | | | | | 9 | 2 | 5 | | | |
| <u>Robes.</u> | | | | | | | | | | |
| Glenton Taylor to Prince William | | 43 | 3 | 3½ | | | | | | |
| D ^o to Prince Edward | | 40 | 16 | 11½ | | | | | | |
| Spashed & Co ^o Lacemen to Prince William | | 54 | 10 | 1½ | | | | | | |
| D ^o to Prince Edward | | 49 | 10 | 7½ | | | | | | |
| Williams Button mak ^r to Prince William | | 3 | 18 | | | | | | | |
| D ^o to Prince Edward | | 3 | 18 | | | | | | | |
| Hodgson Woolen Drap ^r to Prince William | | 2 | 4 | 7½ | | | | | | |
| D ^o to Prince Edward | | 1 | 18 | 3 | | | | | | |
| Beckett & Archer Hosiers to Prince William | | 4 | 1 | | | | | | | |
| D ^o to Prince Edward | | 4 | 1 | | | | | | | |
| Sheffield Shoemaker to Prince William | | 2 | 16 | | | | | | | |
| D ^o to Prince Edward | | 2 | | | | | | | | |
| Fitch Breech ^r mak ^r to Prince William | | 1 | 5 | | | | | | | |
| Clayton Comb maker to D ^o | | 1 | 15 | | | | | | | |
| | | | | | 215 | 17 | 10½ | | | |
| <u>Extraordinaries</u> | | | | | | | | | | |
| Devaynes Apothecary (Quar ^r omitted) | | 2 | 5 | 10 | | | | | | |
| D ^o (present Quar ^r) | | 11 | 10 | 8 | | | | | | |
| Coyens Drap ^r mas ^r to Prince William | | 19 | 11 | 3 | | | | | | |
| D ^o to Prince Edward | | 19 | 11 | 3 | | | | | | |
| M ^r Roberts Waiting mas ^r (D ^o omitted) | | 25 | | | | | | | | |
| M ^r Denoyer Dancing mas ^r (D ^o) | | 25 | | | | | | | | |
| D ^o (present Quar ^r) | | 25 | | | | | | | | |
| M ^r Roberts (D ^o) | | 25 | | | | | | | | |
| Ordinary Turner | | 1 | 12 | 9 | | | | | | |
| | | | | | 154 | 17 | 9 | | | |
| | | | | | | | | 379 | 18 | ½ |
| Total | | | | | | | | 697 | 8 | ½ |



A number of blank pages follow
and have not been photographed.

