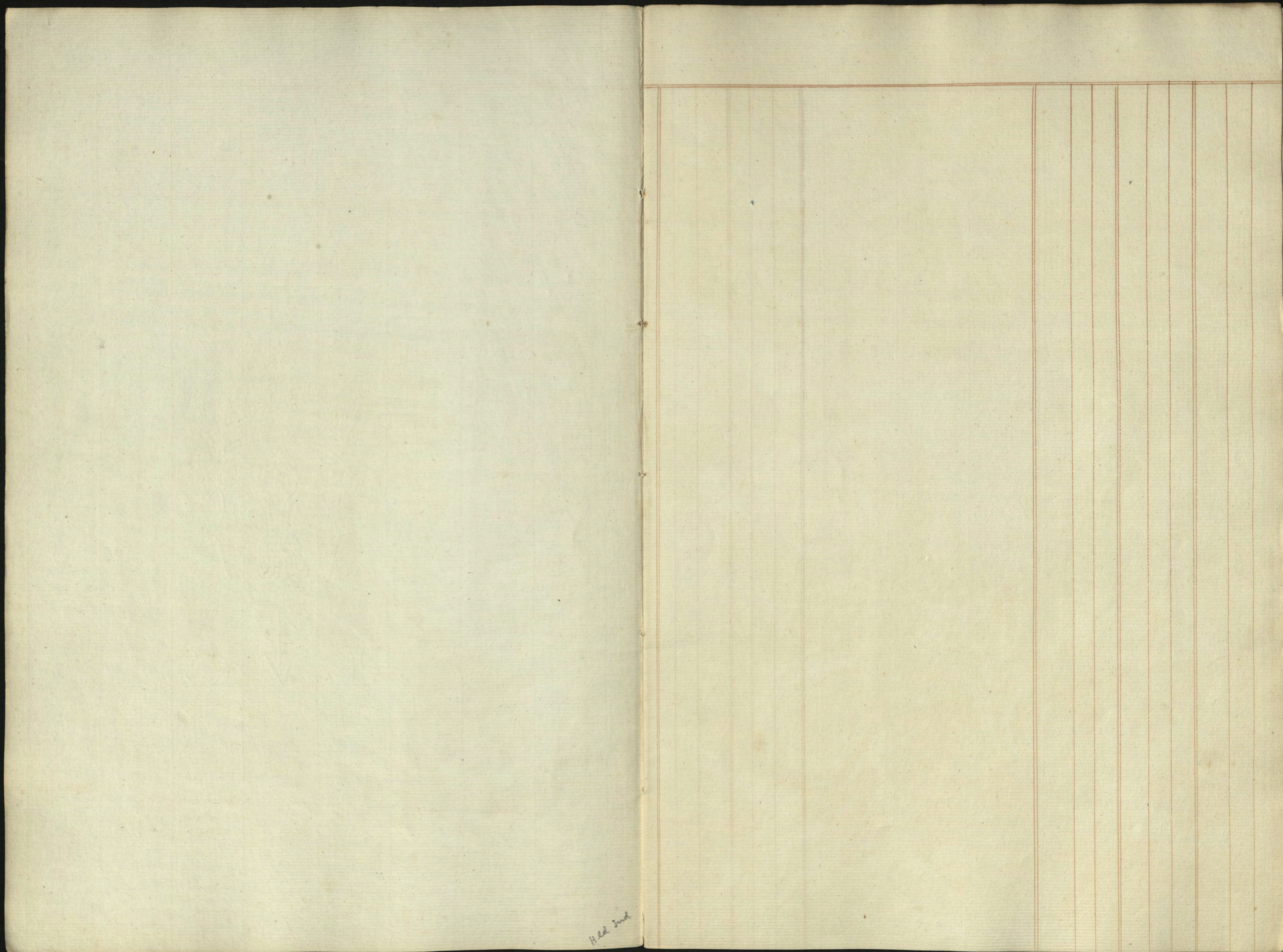
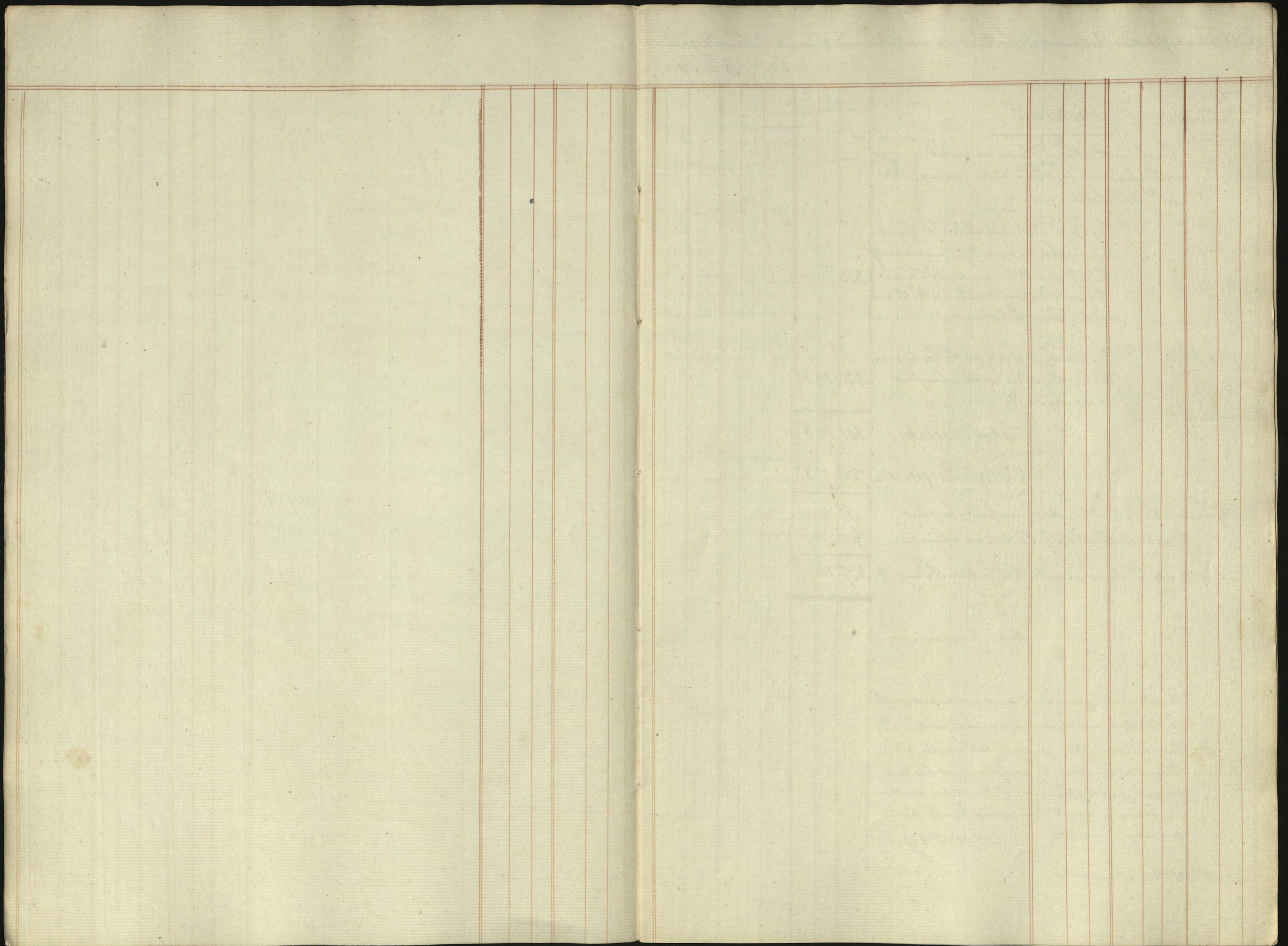
The image shows the front cover of an old book. The cover is decorated with a vibrant, multi-colored marbled paper pattern. The colors include deep reds, yellows, blues, and greens, swirling together in a complex, organic design. In the center of the cover, there is a rectangular, aged paper label with handwritten text in cursive. The text on the label reads: "Box 6/6n", "Prince William & Prince Edward", "Accounts", "Quarter Ending 5<sup>th</sup> January", and "1780". There is a small cross-like mark at the bottom left of the label.

Box 6/6n  
Prince William & Prince Edward  
Accounts  
Quarter Ending 5<sup>th</sup> January  
1780



*Hold out*



The Account of Arthur Robinson, Of the Receipts, and Payments, made by him On Account of their Royal Highnesses Prince William, and Prince Edward for the Quarter Ending 5<sup>th</sup> of January 1780.

1780	Receipts	£	s	d
January	Cash with Mess <sup>rs</sup> Hoare on receipt of the Salaries for the Quarter ending 10 <sup>th</sup> of October	£	300	
	By Cash received at the Exchequer to pay the Salaries & Allowances of the Officers & Servants, of their Royal Highnesses Prince William and Prince Edward	355		
Feb 7	By Cash received at the Exchequer to pay their Royal Highnesses Tradesmen &c	446	17	8½
	<b>Total Receipts</b>	<b>801</b>	<b>17</b>	<b>8½</b>
	<b>Total Payments</b>	<b>764</b>	<b>7</b>	<b>8½</b>
	Remains the late Mr Hoar's Quarterly Surplus	37	10	
	Cash with Mess <sup>rs</sup> Hoare, as above	300		
	Cash with Mess <sup>rs</sup> Hoare on acct. of the ending 5 <sup>th</sup> Jan'y	337	10	

Arthur Robinson

This Account examined, and compared with the Vouchers, which were delivered to me this 30<sup>th</sup> Day of April 1780: Except Mr Jannell's, the Payment of which, is postponed at his own Request, and by the Duke of Montagu's direction the Money is in Mr Robinson's Hands till the ensuing Quarter

Montagu

I allow this Account

Payments	£	s	d	Quarterly
General de Bude	350			87. 10.
Instructor's Rev <sup>d</sup> Mr Humphrey	300			75.
Rev <sup>d</sup> Mr Majendie	200			50.
Pages of the Ch <sup>o</sup> Magnollay	80			50.
Back Stairs Henry Müller	200			50.
Servant to D <sup>o</sup> John Hand	40			10.
Housekeeper & necessary Woman	50			12. 10.
Three Maid Servants	60			15.
Porter	45			11. 5.
Watchman	25			6. 5.
<b>Salaries</b>				<b>£ 317. 10.</b>

For particulars relative to the additional Instructors and Servants, on the Alteration in the Establishments of their Royal Highnesses Prince William, and Prince Edward. See the Extraordinaries in the next Page.

Bills, and Disbursements

	L	S	D	L	S	D	L	S	D	
Brought Over							317	10		
<u>Privy Purse.</u>										
Disbursed by the Pages	9	1	6							
D <sup>o</sup> Housekeeper	7	3								
D <sup>o</sup> Porter	4	7	7 <sup>11</sup> / <sub>2</sub>							
Campbell Stationer	3	15	7							
Ordway Seaman	2		6							
Hillier Waterman	3	14	3							
				30	2	5 <sup>1</sup> / <sub>2</sub>				
<u>Robes.</u>										
Glendon Taylor Prince Edward	15		10 <sup>1</sup> / <sub>2</sub>							
Hodgson Woollen Drap <sup>o</sup> D <sup>o</sup>	6		6							
Beckett & Archer Hosiery D <sup>o</sup>	9									
Bond Glover D <sup>o</sup>	1	13								
Gould Shoemaker D <sup>o</sup>	3	13	6							
Clayton Combmaker D <sup>o</sup>	3	1	3							
				38	9	1 <sup>1</sup> / <sub>2</sub>				
<u>Stables.</u>										
Shrubsole Hackneyman Prince Edward				12		3				
<u>Extraordinaries.</u>										
Disbursed by Gen <sup>l</sup> de Bude, at Portsmouth, Prince William	64	8								
M <sup>r</sup> Denoyer Dancing Master Two Quarters	50									
M <sup>r</sup> Roberts Writing Master D <sup>o</sup>	50									
Cozens Drawing Master Prince Edward	12	1	10 <sup>1</sup> / <sub>2</sub>							
Robertson Apothecary at New	14	8								
M <sup>r</sup> Bruyeres Instruction to Prince Edward										
From 10 <sup>th</sup> Oct. 1779 to 5 <sup>th</sup> Jan <sup>y</sup> 1780 at 350 <sup>l</sup> Ann <sup>y</sup>	87	10								
M <sup>r</sup> Jamell D <sup>o</sup> From D <sup>o</sup> to D <sup>o</sup> at 200 <sup>l</sup> D <sup>o</sup>	50									
Porter at Prince Williams D <sup>o</sup> D <sup>o</sup> at 45 <sup>l</sup> D <sup>o</sup>	11	5								
Board Wages to D <sup>o</sup> from 10 <sup>th</sup> Oct. to 5 <sup>th</sup> Jan <sup>y</sup> at 10 <sup>l</sup> p <sup>w</sup> week	6	10	6							
Housekeeper From 10 <sup>th</sup> Oct. to Jan <sup>y</sup> 1780 at 30 <sup>l</sup> Ann <sup>y</sup>	7	10								
Board Wages to D <sup>o</sup> for the same time at 10 <sup>l</sup> p <sup>w</sup> week	6	10	6							
Maidservant from D <sup>o</sup> to D <sup>o</sup> at 1 <sup>l</sup> p <sup>w</sup> Ann <sup>y</sup>	1	15								
Board Wages to D <sup>o</sup> for the same time at 7 <sup>l</sup> p <sup>w</sup> week	4	7								
				366	5	10 <sup>1</sup> / <sub>2</sub>				
Quarters Extraordinaries							440	17	8 <sup>1</sup> / <sub>2</sub>	
Total							764	7	8 <sup>1</sup> / <sub>2</sub>	

