

30849

A Catalogue

of

Part of the Property belonging to

His Royal Highness

The Prince Regent

in

Carlton House

January 1817

[Faint, illegible handwritten text, possibly bleed-through from the reverse side of the page]

[Faint handwritten text visible on the right edge of the page]

30850

Looking Glasses and Lustres

Council Room	One Looking Glass	120, 60	436
Bow Room	2° d°	135, 60	693
Blue Velvet Room	One Lustre		840
Bow Room	2° d°		493
Throne Room	2° d°		525
Circular Room	2° d°		693
Large Crimson Room	2° d°		1050
	Four	£625 each	2500
			7230

Clocks

Crimson Drawing Room	One Clock	200.
Old Throne Room	2°	180.
Chinese Room	2°	140. 148.
Blue Drawing Room	2° - (Astronomical)	600.
Green Blue Room	2°	300.
Red Anti Room	2°	300.
Row Room	2°	300.
New Drawing Room	2°	150. 160.
More Room	2°	200. 210.
	2°	280.
The Turret Clock, with Bell & hands		150.
		2820
		2800

30851

Candelabra in Ormolu & Bronze

East Anti Room	A pair of Candelabra carried by bronze figures	160.
West Anti Room	A pair of 2° 4 light, Lilly	180.
	2° 1° carried by bronze figures	120.
Crimson Drawing Room	Four 5 light 2° 1° 1°	550.
	Four 6 light 2° 1° 1°	800.
Throne Room	Eight large 7 light Tripod Candelabra	2500.
Old Throne Room	Two 3 light Lilly Candelabra, carried by gilt figures	260.
	Four 4 light Tripod 1° with poppy branches	540.
Chinese Room	Four Chinese 4 light 1° with painted figures	420.
South Westchule	Four 4 light 1° carried by bronze figures	500.
Blue Drawing Room	Four 5 light 1° 1° 1°	550.
	Four Lilly 1° in blue Vases	450.
Red Dining Room	Two 4 light 1° carried by bronze figures	180.
	Four 4 light Hyacinth Candelabra	185.
	Four 4 light Lilly Candelabra on gilt vases with bronze figures	400.
Boat Room	Two 6 light Tripod 2°	300.
Store Room	Pair of tall Candelabra carried by bronze figures	350.
	Two large 5 light 2° on bronze Vases	180.

8440

Bronze Figures and Ornaments

Crimson Drawing Room	Two Bronze Satyres	525
	Large Bronze Group, Proserpine	185
	Large Bronze Group, Lazzaroni	100 185
Circular Saloon	Four bronze Chimera Legs supporting Shelves of Chimney Pieces	160
	Eight Groups of bronze Boys carrying Sarcres fitted to hold Candles	1260
South Vestibule	Bronze Group, William 3. on Horseback, Game Pie	120
	Bronze Equestrian Figure of Louis 15. th	60
Library	Four bronze Groups of Boys carrying Sarcres fitted to hold Candles	630
		2880
		2880

30852

Decorative ormolu & bronze articles
consisting of Vases, ^{Vases} Sundry, ^{Vases} Substands &c.

Throne Room	Two Ormolu Sundry	300.
Chinese Room	Two Ormolu Chiffoniers with green marble tops	150.
Blue Drawing Room	Two painted Sundry mounted in Ormolu	150.
	Two Ormolu Tripods with red marble tops, bronze Sundry	190.
Dressing Room	Mounted Porphyry Vase & Pedestal	60.
Pentagon Room	Two Green serpentine Sundry in bronze figures	120.
Store Room	Very handsome Sundry Stand	100.
		<u>1070.</u>

Chimney Pieces with Ormolu Ornaments, and
Pieces of Marble Sculpture

West Anti Room	White marble Chimney Piece with Ormolu Ornaments	100
Cromwell Drawing Room	Two black marble Chimney Pieces	700
South Vestibule	White marble Chimney Piece	460 160
Throne Room	Two white marble Chimney Pieces with Ormolu Ornaments & Bronze figures	1000
Old Throne Room	White marble Chimney Piece with Ormolu Tripods &c	350
Chinese Room	Red marble Chimney Piece with Ormolu Ornaments	380
Blue Drawing Room	White marble Chimney Piece with Ormolu Panels	300
Inner Blue Room	d ^o d ^o d ^o with Ormolu Ornaments	180
Red Dining Room	Black marble Chimney Piece, with Ormolu Panels	250
Red Anti Room	White marble Chimney Piece, with Ormolu Ornaments	140
Bow Room	d ^o d ^o d ^o d ^o d ^o	90
Octagon Room	Black - d ^o d ^o d ^o d ^o d ^o	70

Sculpture

Large Jardiniere of Rosso antico Marble enriched with Ormolu	} 525 500
Large Rosso antico vase on a Porphyry Column with a richly carved white marble Base	
	} 280
	<hr/> = 4533
	4500

Arms, Warlike Habilements & Accoutrements &c.

The Armory	2816	A Chabraque, or Horse Caparison, of scarlet cloth ornamented with silver studs & plates of silver, fringe &c ^a	100.---
	2822	A Chabraque, corresponding with the preceding	100.---
	2179	A Housing & Petticoat bags of blue velvet, embroidered with gold fringe &c ^a	150.---
	1170	A Housing & Petticoat bags, corresponding with preceding	150.---
	2169	D ^o of scarlet velvet, embroidered with gold fringe &c ^a	150.---
	2180	D ^o corresponding with preceding	150.---
	2446	A Chabraque of blue cloth, French Gold Embroidery with fringe &c ^a	250.---
	2447	A Housing & Petticoat bags of silver Tissue, embroidered	250.---
	2656	A Turkish Caparison of black velvet, embroidered in gold & Tinsel fringe &c ^a	100.---
	2510 2511	The King of Candia's Throne & Seat stool, partly cased with gold, the back with silver, in embossed work	350.---
	2079	A Sabre, gold mounted set with diamonds and precious stones	150.---
	2690	A sword mounted with enamelled gold hilt with diamonds & precious stones	270.---
			<hr/> 2170.---

West

30853

[Faint, mirrored handwriting, likely bleed-through from the reverse side of the page. The text is illegible due to fading and orientation.]

Crea

Old

15

47

60

20

30854

No. in
General
Catalogue

Paintings

		With and Without Frames	Masters	Value
West Anti Room	1	Whole length of late Duke of Cumberland	Sir Joshua Reynolds	630
		500	600	
130	2	Do Louis XV.		157. 10.
		120	150	
300	3	Do Duke of Clarence	Hoppner	367. 10.
		300	350	
500	4	Do Will ^m Duke of Cumberland		630
		500	600	
60	5	Head of King George II.		70. 15.
60	6	Do Queen Caroline		70. 15.
		50		
60	7	Whole length of late Duke of Orleans	Sir Josh. Reynolds	1050
		800	1000	
Crimson Draw ^{ing} Room	8	Do Count de la Lippe	same	1260
		1000	1200	
1050	9	Do Marquis of Granby	do	1260
		1000	1200	
2600	10	Landscape with figures	Rubens	3150
		2500	3000	
160	11	Half length of Lord Pembroke	Sir M. Lawrence	210
		160	200	
700	12	Portraits of burgomaster Pancras & his Lady	Rembrandt	840
		700	800	
300	13	Half length of Lord Erskine	Sir Josh. Reynolds	367. 10.
		300	350	
250	14	Do Dr. Markham Archbishop of York	Hoppner	315
		250	300	
Old Incom Room	15	Whole length of His Majesty in his Robes	Ramsay	210
		160	200	
160	16	Do Her Majesty in her Robes	same	210
		160	200	
300	17	Do The Prince Regent	Hoppner	367. 10.
		300	350	
500	18	Do Duke of York	Sir Josh. Reynolds	630
		500	600	
Bow Room (State Room)	19	Head of King George I.		63
60	20	Do King George II.		63
		60		
9740	21	Flemish Peasants merry-making	Teniers	630
		500	600	
500	22	Landscape with figures & cattle	Adrian Vandewelde	577. 10.
		500	550	
700	23	Interior of a Dutch Cottage & a Peasant's family	Adriaen Brouwer	840
		700	800	
11440		11410	13050	13,986

	No.	Paintings	Bro. forw ^d	£	13986
11440 10960					
Bow Room cont. 600	24	The Hay-field	600	J. Wouvermans 700	735
250	25	Landscape with Cattle	1250	Albert Cuyp 300	315
600	26	Departure of a Auctioning Party	600	Adrian Vandewelde 700	735
300	27	A musical party	300	Gabriel Metz 350	367. 10.
450	28	Sportsmen halting at door of a Cottage	400	Paul Potter 500	525
200	29	Landscape with figures on horse-back	200	Albert Cuyp 250	262. 10.
400	30	A Camp (called Le camp de Pistoles)	400	J. Wouvermans 500	525
160	31	Boy & Girl with a Guinea-pig & Kitten	150	Adrian Vander Werf 200	210
250	32	Interior of a Dutch Kitchen, with figures	250	W. Mieris 300	315
350	33	Large Landscape with figures & horses	350	Albert Cuyp 400	420
130	34	Landscape with figures, cattle & man on horseback	130	Adrian Vandewelde 170	170. 10.
1050	35	D ^o - with stable, cattle, horses, a boy & dogs	1000	Paul Potter 1200	1260
80	36	Interior of a Dutch Apartment w. Woman making lace	80	Peter van Singelondt 100	105
South Aisle Room 80	37	Half length of Princess Augusta	80	Sir W. Beechey 100	105
80	38	D ^o Princess Elizabeth	80	same 100	105
80	39	D ^o Princess Mary	80	D ^o 100	105
80	40	D ^o Princess Sophia	80	D ^o 100	105
100	41	D ^o late Princess Amelia	100	D ^o 100	105
16650	42	D ^o Madame de Pompadour			20460
	43	D ^o Louis XV. when a boy			52. 10.
160	44	Whole length of Henry Prince of Wales	150		210
400	45	D ^o Gaston, Duke of Orleans	400	Vandyck 500	525
17650 17220			4750	Car ^d forw ^d	£ 21,304. 10.

17,220 10,870		30855	Paintings	Port. form? £ 21,304. 10
South Ante Room containing 450	46	A man with a hawk on his hand	450	Rubens 550 577. 10
Audience Room 2000	47	Portraits of the Ship-builder & his wife	2000	Prembrandt 2500 2625. ..
1260	48	View of a river, with boats	1200	Albert Cuyp 1500 1575. ..
1400	49	Landscape with figures	1200	John Both 1600 1600. ..
040 800	50	Christ curing the Paralytic	800	Vandyck 1000 1050. ..
Little Blue Room 200	51	Departure of a Hawking party	200	W. Wouvermans 250 262. 10
350	52	Landscape with man on a greyhorse	350	Albert Cuyp 400 420. ..
180	53	Do with buildings & figures	250	J. Vanderheyden & Adriaen Vanderwilde 220 236. 5. ..
70	54	A Woman descending steps	50	Maes 84. ..
180	55	Gentleman playing on Violoncello & Lady descending steps	180	Gabriel Metz 230 231. ..
120	56	Landscape with buildings & figures	120	J. Vanderheyden & Adriaen Vanderwilde 150 157. 10. ..
350	57	Landscape with a Windmill	350	Jacob Ruysdael 400 420. ..
100	58	Small Portraits of King Charles I. his Queen Henrietta & the infant Charles II.	100	A. Mytens 120 126. ..
East Ante Room 160	59	Whole length of Lord Nelson	150	Hoffner 200 210. ..
160	60	Do - late Duke of Bedford	150	same 200 210. ..
120	61	Half length of Sir David Dundas	120	Owen 150 157. 10. ..
160	62	Whole length of Earl Howe	150	Hoffner 200 210. ..
160	63	Do - Earl St. Vincent	150	same 200 210. ..
Music-Case 100	64	King George II. on horseback	100	31,872. 15. - 126. ..
Dining Room 200	65	Interior of Dutch Cottage with boors	200	Adriaen Ostade 250 262. 10. ..
250	66	A Concert	250	G. Schalcken 300 315. ..
500	67	Two Ladies reading Letters, & a Servant presenting Coffee	500	G. Terburg 600 630. ..
70	68	Dutch Boors regaling	70	John Maen 84. ..
25,740 26,600				1135 Car? form? £ 33,164. 5. ..

		Paintings		Brod. form		£ 33,164. 5.	
25,740							
26,800							
Dining Room	69	Le oon detroupsé	350	G. Schalken	420.		
(cont.)	70	A fresh breeze, with boats & figures	120	W ^m . Vandewelde	157. 10.		
350	71	A Calm, Do	200	same	262. 10.		
120	72	A man & a woman on horseback	120	Albert Cuyp	157. 10.		
200	73	Landscape with cattle	250	Adrian Vandewelde	315. ..		
120	74	A Calm, with boats & figures	200	W ^m . Vandewelde	262. 10.		
250	77	Jan & Syrina	150	Jubons	210. ...		
52,160.0	70	70 Dutch family	50	Joh. Meieris Jun.	84.		
Room next the Dining Room	79	Landscape with figures, a banking party	100	J. W. van der Weyden & Th. W. W. W. W.	210. ...		
70	80	Blacksmith shoeing a horse, with other figures	50	Th. W. W. W.	73. 10.		
160	81	Dutch boors with a pedler	100	Isaac Ostade	73. 10.		
60	82	A Calm, with boats & figures	120	W ^m . Vandewelde	157. 10.		
60	83	Lady fainting, with attendant figures	120	Netscher	157. 10.		
200	84	Landscape with figures & horses	200	Albert Cuyp	262. 10.		
800	85	Do - with Cattle	800	Paul Potter	1050.		
250	86	View of Sea Coast, with figures & a carriage	250	Adrian Vandewelde	315.		
150	87	Fishermen	150	Teniers	189.		
29,960	88	Interior of a Dutch Cottage with boors	120	Adrian Ostade	126.		
180	89	Woman scouring a kettle	250	Gerard Dow	315.		
250	90	Do - chopping onions	250	same	315.		
80	91	Dutch boors, half length figures	80	Adrian Ostade	105.		
400	92	Kermesse, or Village festival	400	Teniers	525.		
120	93	The Dollmaker's Shop	120	W ^m . Meieris	157. 10.		
30,140			4380				
100				Carr. form		£ 39,065. 5.	

		30856	Paintings	Acct. form? £	39,065 5
Down next the Dining Room Cont ^d	94		Truiterers' Shop 120	W ^m Meris	157. 10
	95		A Cabin with boats & figures 160	W ^m Vandewelde	189. ..
	96		Portrait of an Artist with a bust 160	Gabriel Metsu	189. ..
	97		The Roman charity 350	Adrian Vanders Werf	420. ..
	98		Girl at a window with a bunch of grapes 140	Gabriel Metsu	189. ..
	99		Dutch boors, half length figures 100	Adrian Ostade	105. ..
	100		Landscape with figures & cattle 150	Adrian Vandewelde	210. ..
	101		Gentlemen on horseback, with 2 sportsmen seated on a bank 120	Albert Cuyp	157. 10
	102		Landscape with figures driving cattle 200	Nick ^l Berghem	262. 10
	104		D ^o with cattle & a boy 100	Karel du Jardin	136. 10
Row Room ground floor	105		D ^o with figures & cattle 100	Nick ^l Berghem	157. 10
	106		An interior, with boors smoking 250	Adrian Ostade	315. ..
	107		Landscape with cattle 250	Karel du Jardin	315. ..
	109		Assumption of the Virgin 500	Rubens	630. ..
	110		Landscape with cattle 42,700 15 0 105 42,805 15 0	Karel du Jardin	210. ..
	111		D ^o with figures & cattle 200	Nick ^l Berghem	262. 10
	112		A peasants' waggon attacked by robbers 200	D ^r Wouvermans	262. 10
	113		Landscape with a boy & ass 100	Karel du Jardin	126. ..
	114		Lady with a Lap dog, a man pulling its ear 160	W ^m Meris sen ^r	189. ..
	115		Ruinis, with figures 100	Jan ^l Wroonberg	126. ..
	116		The Adoration of the Kings 1200	Rembrandt	1575. ..
	118		An Interior, with boors regaling 100	Adrian Ostade	210. ..
	119		Peasants playing at cards 300	Verelst	367. 10
			5750		
				Carr ^r form? £	45,827 5

		Paintings		bro. form?		£ 45,827. 5.	
Anti Room ground floor 120	120	Landscape with a stag hunt	120	Hackaert & Berghem	157.	10.	Utic
70	70	121 Do small, with figures	50	Teniers	84.		
70	70	122 Do do do	50	same	84.		
200	123	Girl selling fruit to an old woman	200	Gerard Dou	236.	5.	
70	124	Wild Ducks in a landscape	50	Albert Cuyp	84.		Mild
80	125	Study of men on horseback	80	Vandyck	105.		60
200	126	Lady drinking a glass of wine	200	Wm. Mieris	262.	10.	70
250	127	Buildings with figures	250	Standerhoj dend Adriaen Vander velde	315.		70
120	128	Teniers's family with the gardener	120	Teniers	157.	10.	20
120	129	Portraits of a Burgomaster & his family	120	Barant Grant	162.	10.	
130	130	Interior of a Dutch music	130	John Steen	168.		70
140	131	Landscape with figures & cattle	140	Nick. Berghem	178.	10.	70
150	132	Landscape with a Windmill	40,032 - 105 - 47,927	Hobema	210.		
38290 Colonnade Room 250	133	Do with herdsmen driving cattle	250	Nick. Berghem	48,032 315.		
400	134	A Horse-fair	400	Jh. Wouermans	525.		
400	135	A Kermesse, or village festival	400	Teniers	472.	10.	
300	136	Do Do	300	same	367.	10.	Bea
Utic Antiroom 350	137	Landscape with figures & cattle	350	Nick. Berghem	420.		
120	138	The smoker	120	Wm. Mieris	157.	10.	
60	139	Woman playing on the guitar, with other figures	60		69.		
100	141	Dutch family at table	100	John Steen	126.		
	142	Dead Game		Jansen	52.	10.	
80	143	Landscape with figures at door of an Alchouse	80	Isaac Alade	105.		
38000 40350 240			3715	Can? form?	£ 50,636.		

40,350 20,900		30857	Paintings	bro. for?	£ 50,636
Attic	250		145 Landscape with cattle	250	Adriaen Vandenwilde 315
			146 An old man giving money to a girl	25	John Steen 52. 10
	150		147 Landscape with figures	150	Hobbema 210
	120		148 A Lady drinking a glass of wine	120	G. Terburg 157. 10
Middle	70		151 March of the Gaulans	50	Hobbema 84
	60		152 Hall of D ^o	50	same 73. 10
	70		153 A battle	50	D ^o 84
	70		154 D ^o	50	D ^o 84
	80		161 The drummer	80	Teniers 105
	500		162 Interior of a gardener's house with a woman peeling turneps	500	same 630
	70		163 A Masquerade	50	Hobbema 84
	70		* 163 A scene from a french comedy	50	same 84
	150		164 The Alchemist	150	Teniers 210
	200		165 A hall of Hawkers	200	Th. Wouvermans 262. 10
	100		166 The young gamblers	100	Le Nain 136. 10
	160		167 A lady feeding a parrot	160	Gra. Meier's Sen ^r 210
Bed Room	70		169 Portrait in enamel of D ^o Marsham, Arch Bishop of York	70	Bone 78. 15
	120		170 D ^o d ^o Sir Joshua Reynolds	120	same 147
	80		171 D ^o d ^o Marquis of Sandwich	80	d ^o 94. 10
	80		172 D ^o d ^o Lord Nelson	80	d ^o 94. 10
	140		173 D ^o d ^o R. A. Charles Fox	140	d ^o 180. 12
	80		174 D ^o d ^o Carl N. Vincent	80	d ^o 94. 10
	70		175 D ^o d ^o Prince of Orange	70	d ^o 78. 15
				50	
				2055	
					Car? for? £ 54,187 2
	40,950				
	41,740				
	43,110				

43, 110
 540, 950

Paintings

bro't. for w^d = 54,187. 2.

Bed. name cont	No.	Description	Price	Artist	Value
120	176	Portrait in Enamel of His Majesty	120	Bone	157. 10.
120	177	do Her Majesty	120	same	157. 10.
80	178	do late Princess Amelia	80	do	105.
200	179	do Cupid & Psyche	200	do	232. 1.
350	180	do Cymon & Iphigenia	350	do	446. 13. 6
120	181	do Jupiter & Io	120	do	141. 15.
100	182	do Suliel	100	do	121. 16.
350	183	do Death of Dido	350	do	446. 13. 6
200	184	do A Nymph & Cupid	200	do	228. 18.
200	185	do The holy family	200	do	340. 5.
280	186	do with Angel presenting fruit	280	do	340. 5.
280	187	do St. Agnes	280	do	366. 15.
200	188	do Hope Nursing Love	200	do	228. 18.
400	189	do The holy family (called the Silence)	400	do	504.
15120	190	do do do	110	do	141. 15.
The Store Room	204	Horses watering & figures bathing	50	J. P. Wouvermans	84.
70	205	Hare & other dead Game	50	Wouvermans	84.
500	213	Blondman's buff	500	Wilkie	630.
200	214	The Country Choristers	200	Bird	262. 10.
70	215	The Hall in St. James's Park with many portraits	50	Hogarth	84.
80	216	View of Greenwich Park with Portraits of Charles I. & his Queen & Courtiers	80		105.
100	217	A battle piece	100	J. P. Wouvermans	126.

Car^d. for w^d = 59,522. 7.

45,050
 85,25030
 47,400

30858

Paintings

brod. form £ 59,522. 7. ..

45,030							
47,400							
More Room paid 210	210	A large tapestry of Dutch boats	50	John Mann		73. 10.	
800	222	Cyprus & Sphiginea	800	Sir Joshua Reynolds		1050. ..	
200	233	Whole length of Col. S. Leger	200	Gainsborough		262. 10.	
60	60	235 D° His Majesty in Windsor coat	50	Gainsborough Dupont		73. 10.	
60	60	236 D° the late Prince of Wales in his robes	50			63.	
250	237 D° the late Prince of Wales, his consort	250	Ramsay			315. ..	
500	238 D° late Duke of Rutland, in his robes	500	Sir Joshua Reynolds			630. ..	
250	239 D° Marquis of Rockingham	250	same		£ 62,304. 17. 0	315. ..	
49,500					210	62,304. 17.	62,304. 17.
80	240 D° Queen Caroline with the Duke of Cumberland	80				105. ..	
70	70	241 D° Elphi Boy, with Col. Moore	50	La Fontaine de Voff		84. ..	
250	242 D° Her Majesty with the Prince of Wales, when an infant	250	Ramsay			315. ..	
160	243 D° of two of the Princesses, sisters to his Majesty	160	same			210. ..	
400	244 D° Princess Royal, Princess Augusta, Princess Elizabeth	400	Gainsborough			525. ..	
500	245 D° M. Fisher, the celebrated hand-bag-player	500	same			630. ..	
80	248 D° late Duchess of Brunswick, w th the infant Duke	80				105. ..	
70	70	250 D° Frederick King of Prussia	70			84. ..	
120	257 D° (small) of the late Duke & Duchess of Cumberland, w th Lady Elizabeth Lutterell	120	Gainsborough			157. 10.	
80	253 D° Earl of Eglington	80	Sir Joshua Reynolds			105. ..	
42		254 An unfinished portrait of the late Duchess of Cumberland	42	Gainsborough		52. 10.	
80	256 Half length of Admiral Payne	80				105. ..	
80	258 D° Lord Hutchinson	80	Sir Wm. Beechey			105. ..	
80	259 D° Lord Keith	80	Hopner			105. ..	
48,440							
51,630			4790		Car. form?	£ 64,992. 17. ..	

56,910
~~53,390~~

Paintings

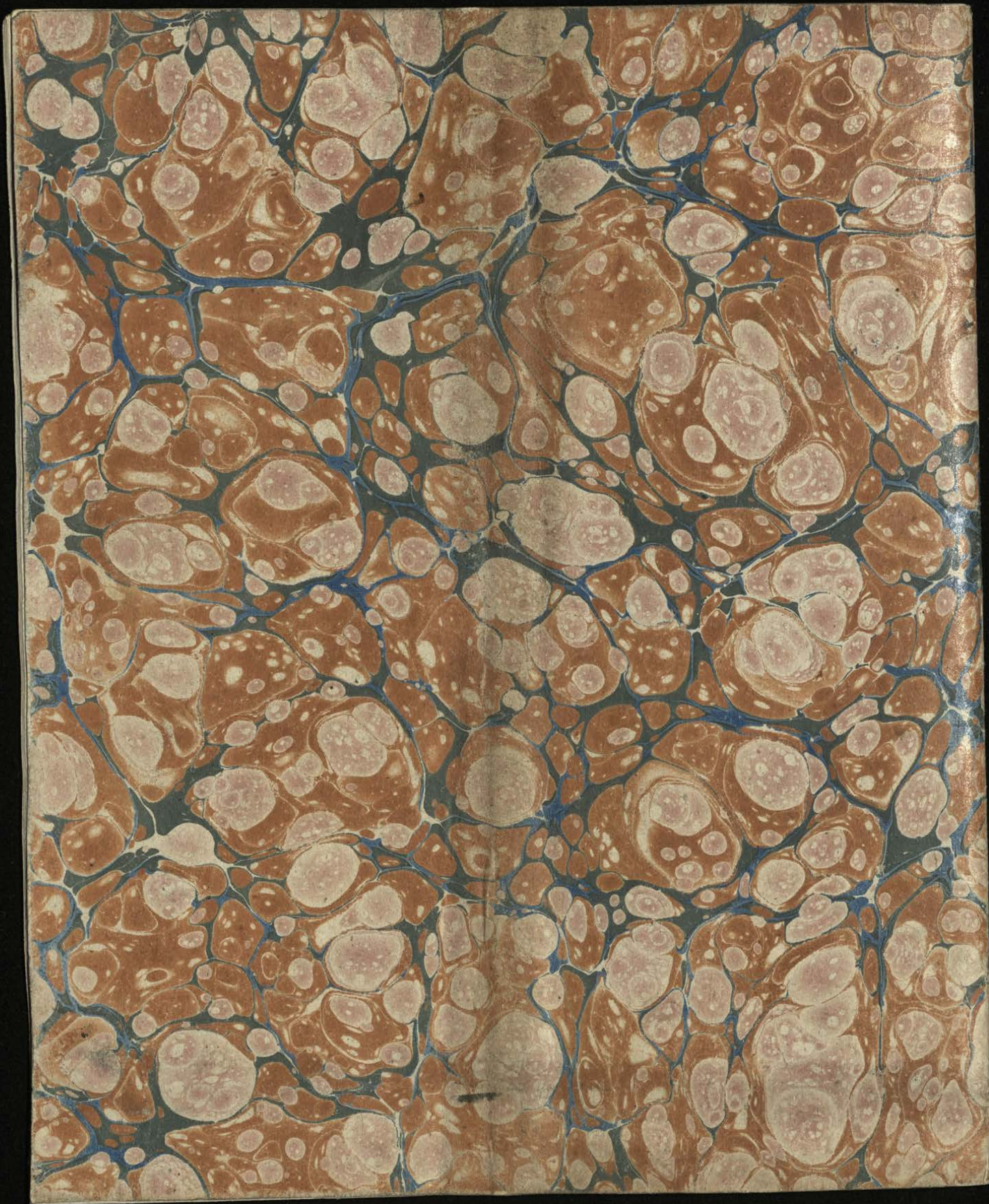
Art. for \pounds 72,096. 2.

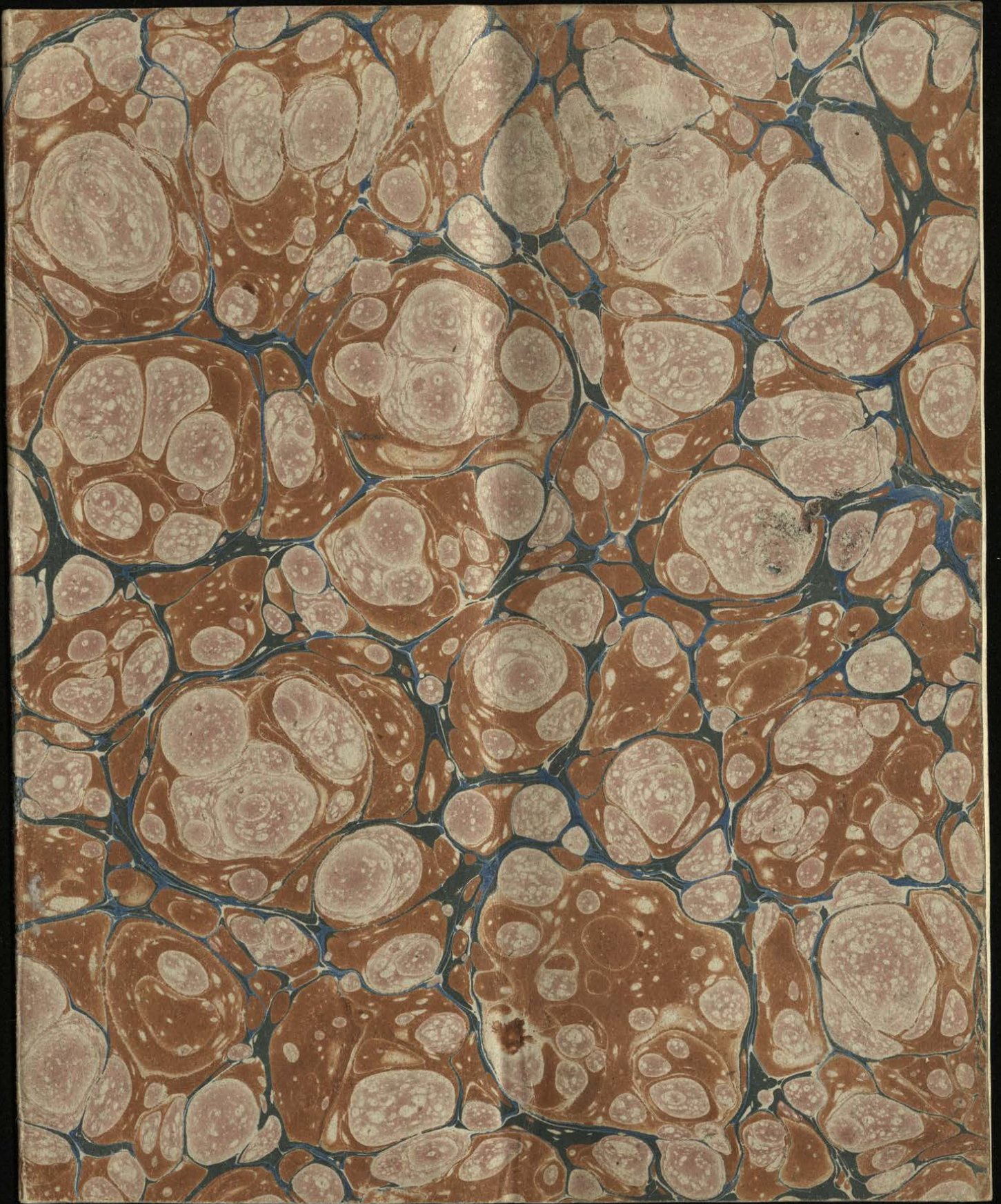
Store Room	Art. No.	Description	Artist	Price
100 cont. d. 157.10-0	420	A Phaeton with pair of black horses, Thomas the stable Coachman & a boy	Stubbs	136. 10.
80	421	Portraits of a buck & a doe	same	105. -
	422	D ^o - a rough dog lying	d ^o	52. 10.
60	423	D ^o - two dogs	d ^o	63. -
130	424	D ^o - of W. Santhagen & three dogs	d ^o	160. -
80	425	D ^o - of South on a chestnut running horse	d ^o	105. -
63 52.10-0	426	D ^o - of a sorrel & a chestnut horse, with a dog	d ^o	210. -
63 141 577.20	433	D ^o - a roan, a brown, & a white horse	Gilpin	262. 10.
	436	D ^o - of Hollyhock, with a shepherd, shepherd's dog in a landscape	Stubbs, Verel & Boucher	52. 10.
	442	D ^o - of a White Arabian	W. Garrard	52. 10.
	443	D ^o - of Saltram (horse)	same	52. 10.
60	444	D ^o - of D ^o with a groom	d ^o	63. -
80	445	D ^o - of Virgo, better horses	d ^o	105. -
	446	D ^o - of Anvil (horse)	d ^o	52. 10.
25.4-0 29.8-0 26.10-0 31.9-0 27.8-0 10.10	447	D ^o - of Myfies - d ^o	d ^o	52. 10.
60	448	D ^o - of Calash & other horses	d ^o	63. -
The Armory 81.10	480	Two Corporals, a trumpeter & a private of 10 th L th Dragoons.	Stubbs	52. 10.
846.6.00 54,500 57,820 45,900	493	Battle of Waterloo	Dighton	105. -

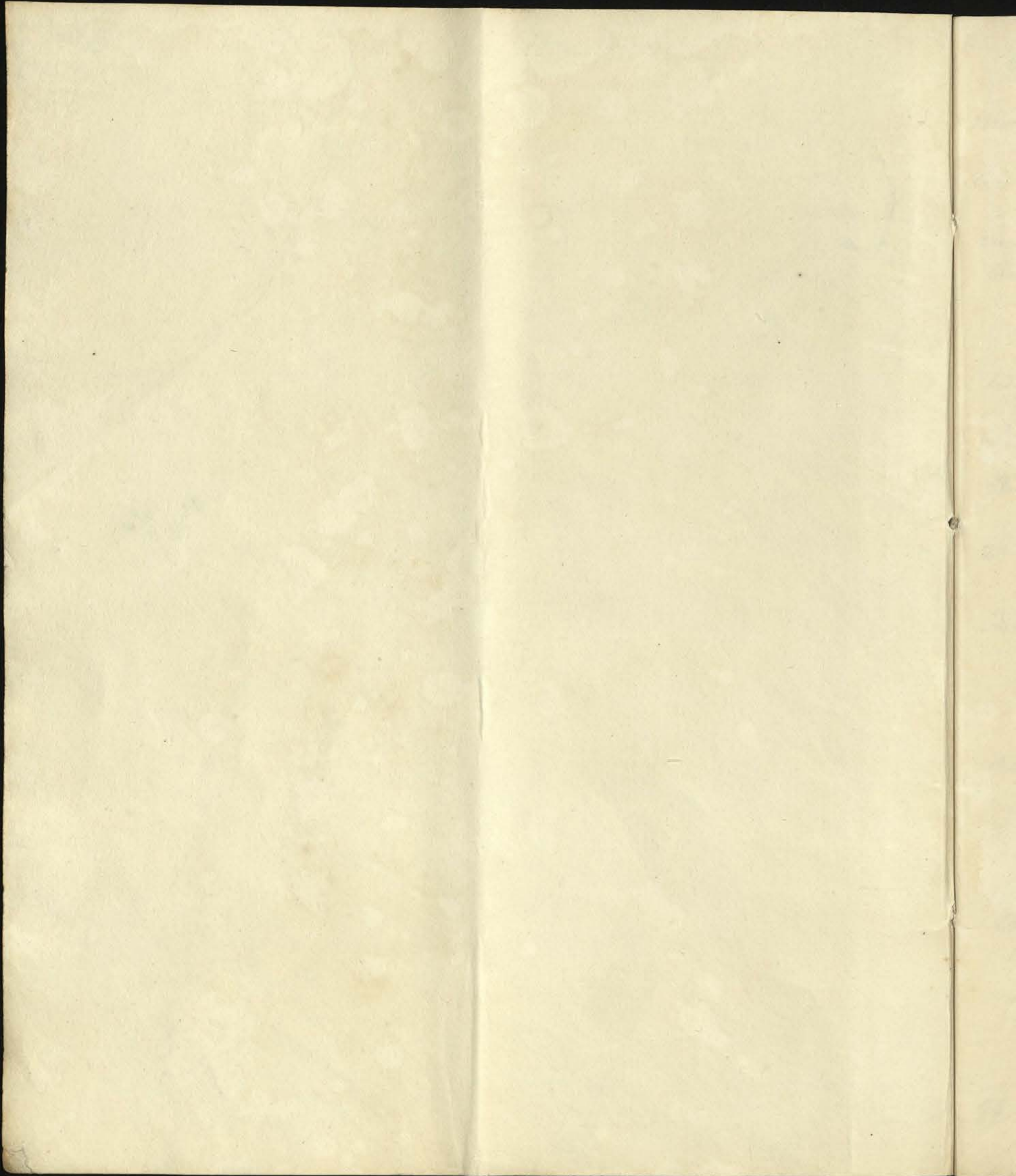
70404-10-0
 4556-10-0
 73849-12
 525
 315
 73,849.12
 73,009.12

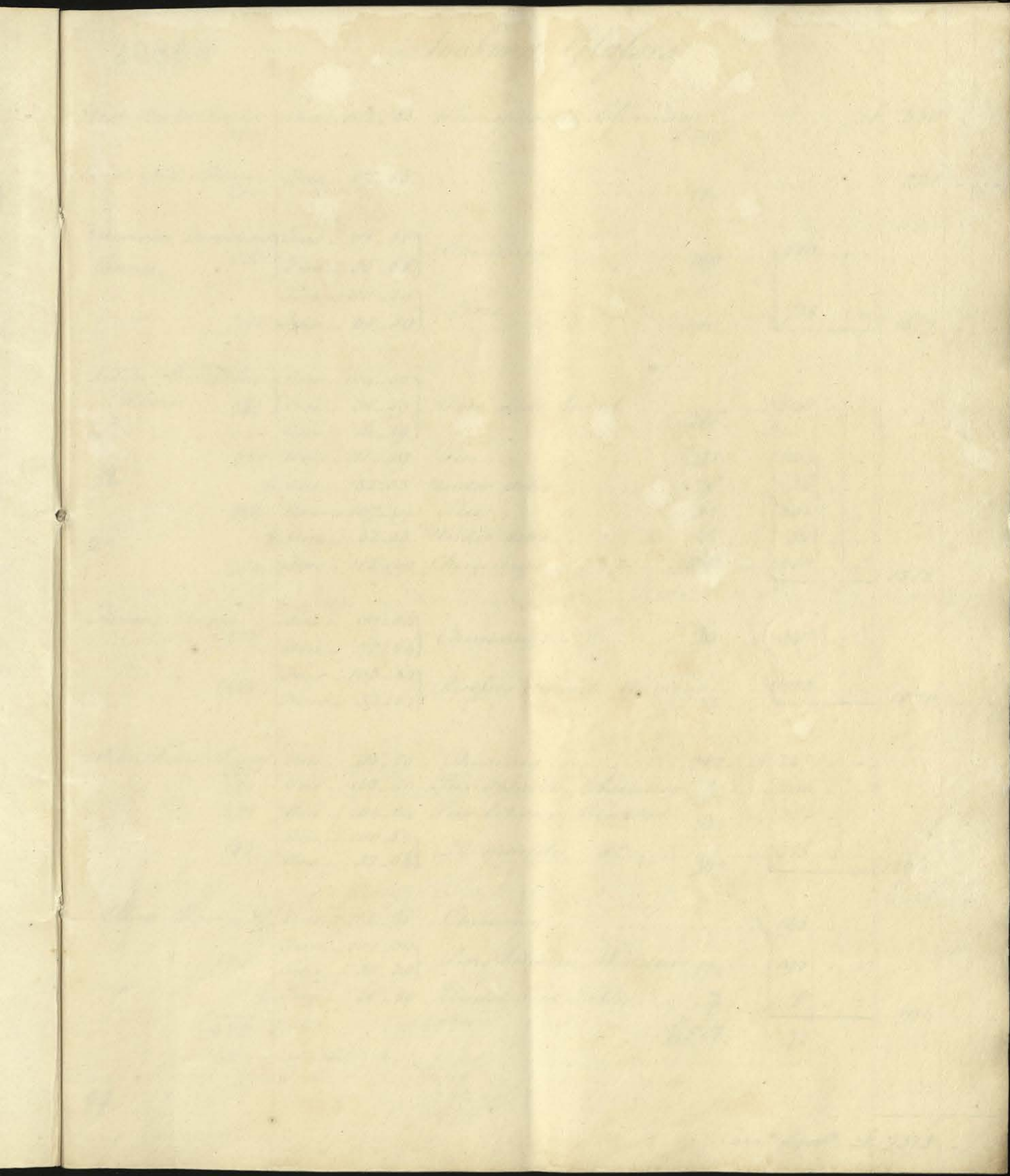
A number of blank pages follow
and have not been photographed.

A number of blank pages follow
and have not been photographed.









West

East

North

South

File

of

the

of

of

of

of

of

51

30860

Looking Glasses

West Anti Room 320	One - 102 " 63	Pier opposite Chimney	315	£ 330	
East Anti Room 200	One - 87 " 65		210	221	
Erinsson Drawing Room 850 700	Two - 107 " 68	Chimneys	840	880	
	Two - 35 " 68					
	Two - 110 " 59	Piers	700	728	1617
	Two - 38 " 59					
Silver Circular Room 300 200 180 22 450	One - 104 " 59	Over side-board	345	340	
	One - 30 " 59					
	One - 16 " 59	Pier	210	234	
	One - 111 " 49					
	One - 52 " 33	Under ditto	25	26	
	One - 107 " 49	Pier	290	208	
	One - 52 " 23	Under ditto	25	20	
Two - 112 " 49	Chimneys	460	480	1312	
Throne Room 300 1600	One - 99 " 64	Chimney	330	347	
	One - 32 " 64					
	Four - 102 " 64	Recesses opposite Windows	1590	1523	1870
	Four - 32 " 64					
Old Throne Room 420 350 300 330	One - 96 " 59	Chimney	210	237	
	One - 103 " 59	Pier opposite Chimney	260	290	
	One - 104 " 64	Pier between Windows	330	358	
	One - 100 " 64	D ^o opposite d ^o	360	386	1268
	One - 32 " 64					
Bow Room 170 5000 693 54	One - 135 " 68	Chimney	093		
	Two - 101 " 30	Piers between Windows	170	193	
	Two - 30 " 30					
	Two - 26 " 20	Under Pier Tables	7	8	894
		6527	6527	72		
		693	693			
		7220	7220			
		292	292			
		7512	7512			
			Carri ^e forw ^d ?	£ 7512	

Looking Glasses — Bro. forw. £ 7512

South Side Room ad. 120 200 16	One - 80,,58	Chimney	130	144		
	One - 98,,50	Pier	200	223		
	One - 25,,50	Under ditto	17	19		386
Council Room 250	One - 120,,50	Chimney	430			
	Two - 105,,50	Piers	260	288		724
Her Majesty's 120 Sitting Room 100	One - 91,,49	Chimney	130	140		
	One - 94,,39	Pier	120	107		247
Foot of the Grand Stair case 200	One - 90,,50	Chimney	220			240
	One - 68,,44	Chimney	60			70
Dining Room 65 Below 160 100 100 260	One - 63,,51	Chimney	65	76		
	Two - 102,,30	Piers on each side of Conservatory	160	170		
	One - 84,,47	Pier between Window	130	121		
	One - 23,,47					
	One - 85,,47	d°	110	121		
	One - 23,,47					
	Two - 84,,50	d°	270	290		
Two - 23,,50						
Two - 102,,54	Piers opposite Conservatory				790	
Roman Room 87 160	One - 70,,55	Chimney	100	103		
	One - 81,,64	Pier opposite Chimney	150	179		282
Bow Room Below 30 120 100 16	One - 65,,57	Chimney	90	90		
	One - 11,,57					
	One - 80,,36	Piers next windows	130	140		
	One - 80,,35					
	Two - 80,,32	Between windows	110	120		303
		110				

2420

82

Carri. forw. £ 10020

30861

Looking Glasses — Bnd. forw. £10620

Anti room below	One - 61.08	Chimney	110	121	"	"
100	One - 81.04	Pier opposite	160	179	"	"
160	One - 09.64	Recep	165	185	"	"
165	Three - 09.64	D ^o				485
Library	One - 05.59	Chimney	100			102
Drawing Room below	One - 03.00	Chimney				
	Three - 05.02	Piers between windows				
	One - 87.72	Recep				
	One - 97.70	Recep				
	Two - 97.31	Doors next library				
	One - 103.53	Between columns				
	One - 103.54	Between columns				
	Four - 97.26	Doors next Gothic Room				
Gothic Dining Room	Four - 98.33	Doors next Drawing Room				
	Four - 98.33	Side board				
His Royal Highness's Bed Room	One - 04.48	Chimney	65	71	"	"
190	Two - 75.50	Piers	200	200	"	"
						277
						11484
Dressing Room	One - 64.52	Chimney	60	68	"	"
60	One - 72.43	Pier	65	74	"	"
65						142
Anti Room, up stairs	One - 03.50	Chimney	60	65	"	"
50	One - 71.58	Pier	90	100	"	"
90						165
1045						
			1075	39		
			10,000			
			11,159			
			632			
			11,791			
						Carried forw. £11791

Looking Glasses — Bndt forw^d \$1179¹ " "

Row Room up Stairs	One - 65,50	Chimney					
Second Bed Room	One - 58,46	Chimney	45	50	"	"	
	One - 68,58	Pier	82	91	"	"	
Up Stairs	One - 67,51	Chimney	75	81	"	"	222
Mr De Basquet Room	One - 10,28	& Glass bordered Frame					12
Mr De Rica Room	One - 48,31	Pier	18				19
Pediment	One - 53,22	Arch shape	14	15	"	"	
	One - 36,28	Under old Table	12	13	"	"	28
Side board Glasses	Two - 48,13		14	15	"	"	
	Two - 48,14		15	16	"	"	
	Two - 48,20		20	22	"	"	
	Two - 48,34		40	44	"	"	97
Store Closet	One - 96,49		150	154	"	"	
	One - 89,63		190	200	"	"	
	Four - 80,32		240	250	"	"	
	One - 60,33		30	33	"	"	
	One - 57,33		25	28	"	"	
	One - 54,32		23	26	"	"	
	One - 50,14		8	9	"	"	
	Two - 90,18		70	79	"	"	
	One - 52,51		50	52	"	"	
	One - 55,50		50	55	"	"	
			1179	892	"	"	

Bndt forw^d \$1210⁹ " "

30862

Looking glasses - Brit. for. £ 892 " " 12109 " "

None. Closet } continued } 20 35 131 1036 1045 2295 6000 <u>10607</u>	One 06" 35	40	45	" "	12109
	One 04" 32	30	42		
	One 50" 34	20	22		
	Two 50" 31	30	40		
	One 30" 25	10	12		
	One 41" 28	12	15		
	One 20" 23		7		
	One 20" 28		8		
	One 15" 10		1		
	One 14" 13		1		

One 11" 8					
	154				1085
	1179		33		
Total Carlton House £ 13254					
	11,159	2idm			1129
	12,492				12125
	762	left			
	<u>13254</u>				

glasses 10,607 } at reduced value 12,557
 broken 1950 } add 54 } 167 lbs. 108
 12557 } } 41 }
 213 } - too low }
12770 } } } 12770

30863

Susties, Santerms & Samps

20	250	Sustie in small Blue Velvet Room	262	"	"
		D ^o large D ^o	840	"	"
50	200	D ^o Anti Room	210	"	"
		D ^o Bow Room	493	10	"
15	300	D ^o Old Throne Room	319	"	"
		D ^o Throne Room	525	"	"
		D ^o Circular Room	193	"	"
80	1000	D ^o 4 small in D ^o $\frac{27 \frac{1}{2}}{10 \frac{1}{2}} 280 \text{ G}^{\circ}$	1176	"	"
		D ^o in large Curson Room	1050	"	"
		D ^o 4 smaller £625	2500	"	"
20	200	D ^o in Anti Room	220	"	"
195	1950	2 Santerms in Grand Hall 65 G ^o	136	10	"
		2 very large D ^o £150	300	"	"
		10 1/2 light Samps in Conservatory 60 G ^o	630	"	"
		6 2 light pedestal Samps 12 G ^o	75	12	"
		<u>£</u>	9430	12	"

Lusters as above £ 8288 7x 0
 Looking Glasses as before 13,254 0 0
 21,542 7x 0
 Detach looking Glasses }
 Lusters, valued as above } 7,230 7x 0
 sent 400 each }
 14,312 0 8
 12770
 1542

8288 7x 0
 1148 7x 0
 6430 12 0
 Lanterns & Samps 1142 2 0
 Glass shades for Chalks - 201
 Carrelature - 381
 Paper & - 72 654 0 8
 1796 2 0

Lanterns Samps
 Glass shades

[Faint, mirrored handwriting, likely bleed-through from the reverse side of the page]

East
West
Cu
Old
Ch
Blue
Inne
Rea

30864

Clocks.

with and without Glass Shades.

State Apartments

East Anti Room	Clock Lotian	80.			
	the Glass Shade	0.			80.
West Anti Room	Clock Le'Pine	100.			
	the Glass Shade	10.			110
Crimson Drawing Room	Clock "Les Horaces"	200.			
	the Glass Shade	20.			220.
Old Throne Room	Clock Maniere.. 2 bronze female figures &c.	180.			
	the Glass Shade	15.			195
Chinese Room	Chinese Clock	148.			
	the Glass Shade	12.			160
Blue Drawing Room	Astronomical Clock Le'pine	600.			
	Glass Shade & Stand	10.			610
Inner Blue Room	Clock Voltaire	300.			
	Glass Shade	15.			315
Lower Suite of Apartments.					
Red Dining Room	Clock "Europe"	70.			
	Glass Shade	0.			70
Carried forward					£ 1784
Glass 1122 116					"

	Clocks — Brought forward		1784	"	"
Red Anti Room	Clock "Williamy"	300			
	Glass Shade	15			
			315	"	"
Bow Room	The Negress Clock	300			
	Glass Shade	10			
			310	"	"
New Drawing Room	Clock "maniere" brown figure of Apollo	160			
	Glass Shade	15			
			175	"	"
Private Apartments					
H. R. H. Bed Room	Clock Lotian ... 2 white Figures		85	"	"
His Royal Highness's Dressing Room	Small Clock - Lotian		50	"	"
Page's Room	Chronometer. Perequet		70	"	"
Octagon Room	Clock Williamy		94	"	"
Old Bed Room	Clock Lotian with 2 large winged Sphinxes		95	"	"
Store Room	Large Clock Apollo	210			
	Glass Shade	20			
			230	"	"
	Large Clock Lotian 2 Brown figures	280			
	Glass Shade	20			
			300	"	"
	Musical Clock		45	"	"
	Very old Clock Williamy with palm Tree		40	"	"
	Carried forward		£ 3,593	"	"

Glass Shades - £ 00

30865

Clocks — Bro^t forward ————— £

3593..

Store Room cont^d

Clock with Marble Sleeping Figure..... 60.
Glass Shade..... 10.

70

Clock. Temple of Diana..... 50.
Glass Shade..... 5.

55

2 Old eight day Spring Clocks in wood Cases.....

33

Great Stair Case

The Clock including the hands but exclusive of
the Dial and figure which carries it.....

30

The Tower Clock including the Bell & the hands.....

150

150 light candles..... Glass 127 415 £

3931

201 Ded^t: Glass Shades.....

201

3730

2 2 1/2 Bed^t Clocks of Catalogue.....

2820

2 glass shades valued at above £100
each.....

902

2 Clocks of 1/2 bench with painted figures.....

220

2 1/2 all hand made and of brass finish
with brass legs.....

150

2 glass shades of same.....

100

2 1/2 hand made of brass finish.....

150

2 1/2 hand made of brass finish.....

150

2 1/2 hand made of brass finish.....

150

2 1/2 hand made of brass finish.....

150

1
2
3
4
5
6
7
8
9
10
11
12
13
14
15
16
17
18
19
20
21
22
23
24
25
26
27
28
29
30
31
32
33
34
35
36
37
38
39
40
41
42
43
44
45
46
47
48
49
50

Co
 M
 O
 Co
 M

Candelabra in Ormoulu & Bronze

State Apartments.

East ante Room	A pair of three 1 st Lily Branches in white Vases	90	"	"
	A pair of Candelabra carried by female bronze figures	160	"	"
West ante Room	A pair of 4 1 st Lily Candelabra	180	"	"
	A pair of Candelabra carried by female bronze figures	120	"	"
Crimson Drawing Room	4 five light Candelabra carried by bronze female drapery figures	550	"	"
	4 Glass Shades & Stands	86	"	"
		436	"	"
	4 six light Candelabra carried by bronze Bacchantes	800	"	"
Throne Room	10 large 7 1 st Tripod Candelabra	2500	"	"
Old Throne Room	2 3 1 st Lily Candelabra carried by two gilt female figures	260	"	"
	2 Glass Shades & Stands	25	"	"
		285	"	"
	4 4 1 st Tripod Candelabra with poppy branches	540	"	"
	4 Glass Shades & Stands	58	"	"
		598	"	"
Chinese Room	4 Chinese 4 1 st Candelabra with painted figures	420	"	"
South Vestibule	4 4 1 st Candelabra carried by bronze female with Cornua Copia	500	"	"
	4 Glass Shades & Stands	94	"	"
		594	"	"
	Carried forward	£	6383	"
	Glass Shades £ 263			

Candelabra—Brought forward— £ 1303 ..

Blue Drawing Room (small) 4- 5 lb Candelabra carried by bronze female
Figures with poppy Branches 550 ..
4 Glass Shades & Stands 94 .. 644 ..
4 Silly Candelabra in blue Vases 450 ..

Lower Suite of Apartments

Red Dining Room 2- 4 lb Candelabra carried by bronze female Satyrs 180 ..
4- 4 lb Hyacinthus Candelabra 185 ..
4- 4 lb Silly Candelabra on gilt Vases with bronze
Nereides } 400 ..

Bow Room 2 Small single St Candelabra 24 ..
2- 6 St Tripod Candelabra 300 ..
2 Glass Shades & Stands for D. 24 .. 324 ..

Entrance Room 4 Hyacinthus Candelabra 185 ..
2- small 6 lb Candelabra carried by bronze boys 100 ..

Library 4 small blue Vase Candelabra 72 ..

New Drawing Room 2- 3 lb Candelabra carried by small bronze drapery
figures } 90 ..

Private Apartments up Stairs

H. K. H. Bed Room 2- 3 lb Egyptian Candelabra 32 ..

Octagon Room 2- small Silly Candelabra on white Vases 90 ..

Brought forward— £ 9159 ..
Glass Shades £ 118 ..

[Faint, illegible handwritten text, likely bleed-through from the reverse side of the page]

Cum

Circa

Soc

St. M

Pa

Old

In M

Bronze Figures and Ornaments

State Apartments

Crimson Drawing Room	2 Bronze Satyr	525	"	"
	Large Bronze Group. Proserpine	185	"	"
	Large Bronze Group. Laocoon	105	"	"
Circular Saloon	4 bronze Chimera Legs supporting the Shelves of the Chimney Pieces	160	"	"
	8 Groups of Bronze Boys carrying Jarre fitted up to hold Candles	1260	"	"
South Vestibule	Bronze Group William III on Horseback Frame &c	120	"	"
	Bronze Equestrian Figure of Louis XV	60	"	"

Lower Suite of Apartments

Library	4 bronze Groups of Boys carrying Jarre fitted up to hold Candles	630	"	"
---------	------------------------------------------------------------------	-----	---	---

Private Apartments up Stairs

H. R. St. Dressing Room	2 bronze Figures of Infant Hercules fitted up to receive Candles	75	"	"
Pige's Room	2 bronze figures of Infant Hercules fitted up for Candles	75	"	"
Old Bed Room	2 bronze Sitting Figures on Samps	40	"	"
In the Store Room	Equestrian bronze figure on a white marble plynth	25	"	"

£ 3260 " "
 Ded^d as 10 Calyxes known
 value at above £50 each } 2885
 375

[Faint, illegible handwriting, likely bleed-through from the reverse side of the page]

East
West
Crim
Fl
Old
Ch
Blu
New

Decorative Ormoulu & Bronze Articles consisting
of Vases, Tenders, Inkstands &c.

State Apartments

East Anti Room	2 Rose Wood Inkstands with bronze Vases	42	"	"
West Anti Room	1 Rose Wood Inkstand with bronze Vase	21	"	"
Crimson Drawing Room	4 blue Vases mounted in Ormoulu	94	"	"
	4 Glass Shades & Stands for D.	20	"	"
Throne Room	2 Ormoulu Tenders		300	"
	2 blue Vases mounted in Ormoulu	47	"	"
	2 Glass Shades & Stands for D.	10	57	"
Old Throne Room	2 small gilt Vases on red marble papyrus	10	"	"
	2 Glass Shades & Stands	0	48	"
Chinese Room	2 Ormoulu Cheffonières with green marble Tops		150	"
Blue Draw ^d Room	2 painted Larre mounted in Ormoulu	150	"	"
	2 Glass Shades & Stands	11	161	"
	2 Ormoulu Tripods with red marble tops bronze Sphinxes &c.		190	"

Lower Suite of Apartments.

Bow Room	2 Small gilt Figures - Troubadour & Pilgrim	21	"	"
New Draw ^d Room	2 Small black Vases mounted in Ormoulu	47	"	"
	Carried forward		1154	"

Glass Stands - 249

	Decorative Ormolu Articles &c. — <i>pro^d</i> forward ...	1154	"	"
	Private Apartments up Stairs			
H. K. St. Sleeping Room	Mounted Porphyry Vase & Pedestal	60	"	"
Page's Room	Rose Wood Ink Stand with bronze Vases	21	"	"
Octagon Room	Well Ink Stand Marble & Ormolu	30	"	"
	2 Green Serpentine Jars in bronze Figures	120	"	"
Old Bed Room	An Ink Stand	21	"	"
In the Store Room	Very handsome Ink Stand	100	"	"
	Glass Shade & Stand	8	"	"
	Ink Stand with 2 Negro Figures	35	"	"
	Egyptian Ink Stand	31	"	"
	pair of Ormolu Tripods with Verde Antique Bowls	75	"	"
	Glass Shades & Stands	10	"	"
	Pair of small white Vases mounted in Ormolu	21	"	"
	Shades & Stands	5	"	"
	Glass Mar. £ 23			
				1691
	23			
	49			
	72			
	Desk w th Catalogue & Ormolu			72
	above £50 each			1619
				1870
				549

Chimney Pieces with Ormoulu Ornaments &
Pieces of Marble Sculpture

State Apartments

West Anti Room	White marble Chimney piece with Ormoulu Orn ^{ts}	100	"	"
Crimson Drawing Room	Two black Marble Chimney Pieces. Ormoulu Orn ^{ts}	700	"	"
South Vestibule	White Marble Chimney piece Ormoulu Ornaments	168	"	"
Throne Room	Two white Marble Chimney Pieces with Ormoulu Ornaments & bronze figures attached to them	1000	"	"
Old Throne Room	White Marble Chimney Piece with Ormoulu Supports & bas relief Ornaments	350	"	"
Chinese Room	Red Marble Chimney Piece with Ormoulu Ornam ^{ts}	380	"	"
Blue Draw ^g Room	White Marble Chimney Piece with Ormoulu Panels	300	"	"
Inner Blue Room	White Marble Chimney Piece or moulu Ornaments	180	"	"

Lower Suite of Apartments

Red Dining Room	Black Marble Chimney piece Ormoulu panels	250	"	"
Red Anti Room	White Marble Chimney Piece with Ormoulu Orn ^{ts}	140	"	"
Bow Room	White Marble Chimney Piece or moulu Orn ^{ts}	90	"	"

Private Apartments up Stairs

Octagon Room	Black Marble Chimney piece Ormoulu Ornaments	70	"	"
Carried forward - S		3720	"	"

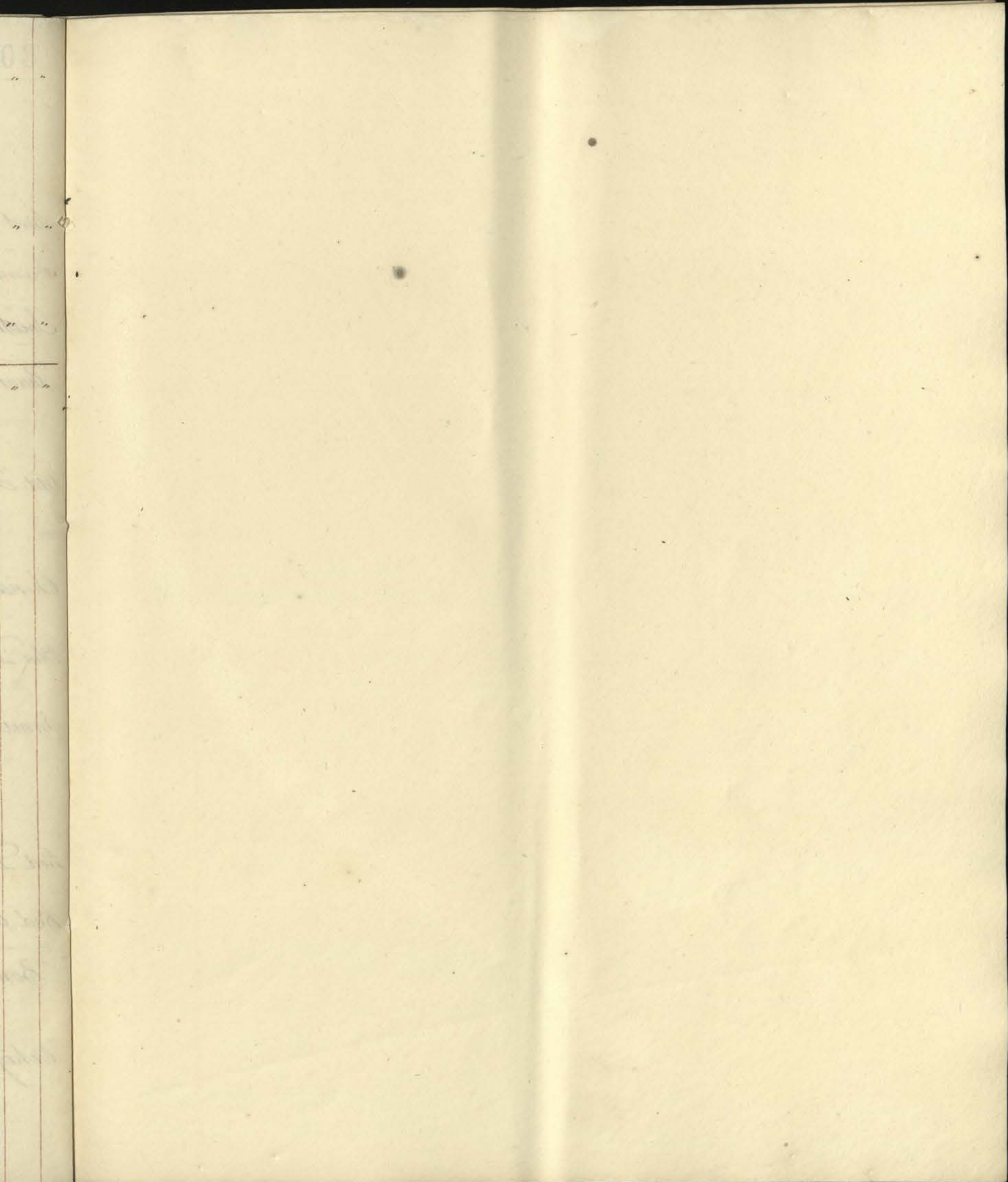
Chimney Pieces &c. Brought forward - £ 3728 ..

Sculpture

Large jardiniere of rosso antico Marble enriched
with Ornola ----- } 525 ..

Large Rosso antico vase on a porphyry Column
with a richly carved white Marble Base ----- } 280 ..

£ 4533. ..



Faint handwritten text, possibly bleed-through from the reverse side of the page.

**A number of blank pages follow
and have not been photographed.**

**A number of blank pages follow
and have not been photographed.**

