



Value

Acce

Look

Lanu

Cloc

Can

Bro

Decor

Mon

Arm

Pun

Pro

Pro

Valuation of Property belonging to His Royal Highness The Prince Regent in Carlton House  
as Insured against Loss by Fire, January 1817

			Reference to Particulars in this book
Household Goods	(Particulars not specified)	£ 37,000	(Sup <sup>d</sup> Tatham & Co)
Looking Glasses and Lustres	as by Catalogue	7,230	Page 1.
Other Looking Glasses & Lustres (no one valued at more than £400)	{ 20,000 }	12,770	1 to 3
Lanterns & Lamps, and Glass shades for Clocks & Candelabra		1,600	4.
Clocks (without glass shades)	as by Catalogue	2,800	5.
Other Clocks - d <sup>o</sup> - (no one valued at more than £100)	{ 3600 }	800	5.
Candelabra inOrmolu & Bronze (without glass shades)	as by Catalogue	8,440	6.
Other Candelabra - d <sup>o</sup> - d <sup>o</sup> (no one valued at more than £50)	{ 9700 }	1,260	6.
Bronze figures and Ornaments	as by Catalogue	2,880	7.
Other Bronze figures & d <sup>o</sup> (no one valued at more than £50)	{ 3200 }	320	7.
Decorative Ormolu & Bronze Articles, consisting of Peders, Cases &c. as by Catalogue		10,770	8.
Other d <sup>o</sup> - d <sup>o</sup> (no one valued at more than £50)	{ 1600 }	530	8.
Marble Chimney Pieces with Ormolu ornaments, & Pieces of Marble Sculpture, as by Catalogue		4,500	9.
Arms, Warlike Habilements & Accoutrements &c. as by Catalogue		2,170	10.
Other Arms, d <sup>o</sup> (no single article valued at more than £50)	{ 25,000 }	22,830	M <sup>r</sup> Sutton
Paintings, framed and not framed	as by Catalogue	58,000	11. to 23.
d <sup>o</sup> - d <sup>o</sup> - d <sup>o</sup> (no one valued at more than £50)	{ 62,000 }	4,000	24. to 31.
Prints and Drawings	(no one valued at more than £30)	20,000	M <sup>r</sup> Grouse
Printed Books		11,800	B <sup>r</sup> Clarke
	Altogether	£ 200,000	

*Specie*

*In Cou*

*Boo*

*Blue*

*Boo*

*Thro*

*Cri*

*Larg*

*The fo*

*Wor*

*East*

*Crim*

*Silver*

*Thron*

*Old In*

30872

Looking Glasses and LustresInsured at  
£20,000.Specified in Catalogue exhibited to the Fire-Insurance Offices  
(being valued at more than £400 each)

		Valuation
In Council Room	One Looking Glass 120,, 60 (Chimney)	436
Bow Room	d° d° 135,, 60 (Chimney)	693
Blue Velvet Room	One Lustre	840
Bow Room	d° d°	493
Throne Room	d° d°	525
Circular Room	d° d°	693
Large Crimson Room	d° d°	1050
	Four d° £625 each	2500
Together, as specified in Catalogue		7230
Others not specified in d°		12,770
Total		20,000

Sum Insured

The following Not Specified in said Catalogue <sup>no one</sup> (being valued at more than £400)

		Valuation (to be reduced as per Catalogue)
West Anti Room	One 102,, 63 Looking Glasses Pier opposite Chimney	330
East Anti Room	One 87,, 65	221
Crimson Drawing Room	Two 107,, 68 Chimneys	889
	Two 35,, 68	
	Two 110,, 59 Piers	728
	Two 38,, 59	
Silver Circular Room	One 104,, 59	340
	One 30,, 59 Door side-board	
	One 16,, 59	
	One 111,, 49 Pier	234
	One 52,, 33 Under d°	26
	One 107,, 49 Pier	206
	One 52,, 33 Under d°	26
	Two 112,, 49 Chimneys	480
	Throne Room	One 99,, 63 Chimney
One 32,, 64		
Four 103,, 64 Receps opposite Windows		1523
Two 32,, 64		
Old Throne Room	One 96,, 59 Chimney	237
	One 103,, 59 Pier opposite Chimney	290
	One 104,, 64 Pier between Windows	355
	One 100,, 64 d° opposite d°	386
	One 32,, 64	
Looking Glasses Carr. fmo. £6618		

2		Looking Glasses (not specified in said Catalogue) continued. - Corr. form? £	6618. ....
Bow Room	Two - 101, 30	Piers between Windows	193. ....
	Two - 30, 30		
	Two - 26, 20	Under Pier Tables	0. ....
South Ante Room	One - 80, 58	Chimney	144. ....
	One - 98, 56	Pier	223. ....
	One - 25, 56	Under d°	19. ....
Council Room	Two - 105, 40	Piers	288. ....
Her Majesty's sitting Room	One - 91, 49	Chimney	140. ....
	One - 94, 39	Pier	107. ....
Foot of the Grand Stair-case	One - 96, 60	Chimney	246. ....
Plate Room	One - 68, 44	Chimney	70. ....
Dining Room, below	One - 63, 51	Chimney	76. ....
	Two - 102, 30	Piers on each side of Conservatory	176. ....
	One - 84, 47	Piers between Windows	121. ....
	One - 23, 47		
	One - 85, 47	d°	121. ....
	One - 23, 47	d°	
	Two - 84, 50	d°	296. ....
	Two - 23, 50		
	Two - 102, 60	Piers opposite Conservatory	(not included)
	Roman Room	One - 70, 55	Chimney
One - 81, 64		Pier opposite Chimney	179. ....
Bow Room below	One - 65, 57	Chimney	96. ....
	One - 11, 57	d°	7. ....
	One - 80, 36	Piers next Windows	140. ....
	One - 80, 35		
	Two - 80, 32	Between windows	120. ....
Ante Room - below	One - 61, 68	Chimney	121. ....
	One - 81, 64	Pier opposite	179. ....
	One - 69, 64	Recess	185. ....
	Three - 69, 64	d°	(not included)
Library	One - 65, 59	Chimney	102. ....
Drawing Room, below	(Various Glasses not valued as the Property of H.M. Co.)		
Gothic Dining Room			
His Roy <sup>ty</sup> Highness's Bed Room	One - 64, 40	Chimney	71. ....
	Two - 75, 50	Piers	206. ....
Looking Glasses Corr. form? £			10355. ....

Looking Glasses (not specified in said Catalogue) bro. form £10,355.---

Dressing Room	One 64, 52 Chimney	68.---
	One 72, 43 Pier	76.---
Anti Room, up stairs	One 63, 50 Chimney	65.---
	One 71, 58 Pier	100.---
Boat Room + d <sup>o</sup>	One 65, 50 Chimney	(not included)
Second Bed Room	One 56, 46 Chimney	50.---
	One 66, 56 Pier	91.---
up steps	One 67, 51 Chimney	81.---
M <sup>r</sup> . De Bosquet's Room	One 40, 28 4 Glass bordered frame	12.---
M <sup>r</sup> . Du Pasquier's room	One 40, 31 Pier	19.---
Pediment	One 53, 22 Arch shape	15.---
	One 36, 28 Under Old Table	13.---
Side Board Glasses	Two 48, 13	15.---
	Two 48, 14	16.---
	Two 48, 20	22.---
	Two 48, 34	44.---
Shore Closet	One 96, 49	154.---
	One 89, 63	200.---
	Four 80, 32	256.---
	One 60, 33	33.---
	One 57, 33	28.---
	One 54, 32	26.---
	One 50, 14	9.---
	Two 90, 18	79.---
	One 52, 51	52.---
	One 55, 50	55.---
	One 66, 35	45.---
	One 64, 32	42.---
	One 50, 34	22.---
	Two 50, 31	40.---
	One 39, 25	12.---
	One 41, 28	15.---
	One 29, 23	7.---
	One 29, 28	8.---
	One 15, 10	1.---
	One 14, 13	1.---
	One 11, 8	"---
	Broken Glass from Blue Velvet Room	
	Broken Glass from Dining Room below	

Total Looking Glasses not specified in said Catalogue } £12,125.---

Lustres (not specified in said Catalogue) 149.

Blue Velvet Room	One Lustre	£262.---
Anti Room	2 <sup>o</sup>	210.---
Old Throne Room	2 <sup>o</sup>	319.---
Circular Room	Four small Lustres	280 9 <sup>4</sup> 1176.---
Anti Room	One Lustre	220.---
Total Looking Glasses & Lustres not specified in the said Catalogue		£2,187.---
		£14,312.---

From this total of Valuation at £14,312.---  
 Deduct from all the Articles proportionally - 1,542.---  
 Reducing the same to the sum intended - 12,770.---

Lanterns & Lamps, and Glass Shades over Clocks and Candelabra } Insured at £1600.

(No Catalogue thereof delivered to the Fire-Insurance Offices, but the particulars are as hereunder stated.)

		Valuation
Grand Hall	2 Lanterns ----- 65 9'	136. 10
	2 very large 2° ----- £150	300
Conservatory	10 four-light Lamps ----- 60 9'	630
	6 two-light pedestal Lamps ----- 12 9'	75. 12
	Lanterns & Lamps	1142. 2
East Anti Room	1 Glass Shade, over Clock -----	8
West Anti Room	1 " " " " -----	10
Crimson Drawing Room	1 " " " " -----	20
	4 " " over Candelabra -----	86
Old Parson Room	1 " " over Clock -----	15
	6 " " over Candelabra (2 at £25 & 4 at £50) -----	83
Chinese Room	1 " " over Clock -----	12
South Vestibule	4 " " over Candelabra -----	94
Blue Drawing Room	1 " " over Clock -----	10
	4 " " over Candelabra -----	94
Inner Blue Draw <sup>g</sup> Room	1 " " over Clock -----	15
Red Dining Room	1 " " " " -----	8
Red Anti Room	1 " " " " -----	15
Bow Room	1 " " " " -----	10
	2 " " over Candelabra -----	24
New Drawing Room	1 " " " " Clock -----	15
More Room	2 " " " " ----- £20	40
	2 " " " " (one £10 - one £5) -----	15
		582
	Together -----	1724. 2
	To be deducted from all the Articles proportionably -----	124. 2
	Reducing the same to the total sum insured £1600. ....	

Spe  
Crim  
Hd  
Cher  
Blu  
In  
Rec  
Ba  
New  
Ho  
  
No  
  
East  
West  
Red  
H.R.  
H.R.  
Pag  
Oct  
Hd  
Ho  
  
Gre



Specified in Catalogue exhibited to Fire-Insurance Office (viz.)

Crimson Drawing Room	One Clock (Les Horaces)	200. ....
Old Throne Room	d° (Mansions) 2 bronze female figures &c.	100. ....
Chinese Room	d° (Chinese)	<del>110</del> 140. ....
Blue Drawing Room	d° (Astronomical) Le Pine	600. ....
Inner Blue Draw Room	d° (Kubliany)	300. ....
Red Anti Room	d° d°	300. ....
Bow Room	d° (The Regrets)	300. ....
New Drawing Room	d° (Mansions) Bronze figure of Apollo	<del>110</del> 150. ....
Store Room	Two Clocks - (one <del>£200</del> - the other £280)	480. ....
	The Tower Clock, with Bell & hands	150. ....
Together, as specified in Catalogue		2800. ....

The following not specified in said Catalogue, no one clock being valued at more than £100 - (viz.)

East Anti Room	Clock, Sotian	80. ....
West Anti Room	d° Le Pine	100. ....
Red Dining Room	d° "Europe"	70. ....
H.R. A's Bed Room	d° Sotian - 2 white figures	85. ....
H.R. A's Dressing Room	d° small, Sotian	50. ....
Pages Room	Chronometer, Perrequet	70. ....
Octagon Room	Clock, Kubliany	94. ....
Old Bed Room	d° Sotian, with 2 large winged sphinxes	95. ....
Store Room	Musical Clock	45. ....
	Very old Clock, Kubliany	40. ....
	Clock with Marble Sleeping figure	60. ....
	d° Temple of Diana	50. ....
	2 old eight day Spring Clocks in Wood Cases	33. ....
Great Hair Case	The Clock including the hands, but exclusive of the Dial & figure which carries it	30. ....
		902. ....
To be deducted from the sum of Articles proportionably		102. ....
Reduced value of Clocks not specified in Catalogue		800. ....
Total Sum insured on Clocks		£3600. ....

Candelabra in Ormolu & Bronze (without Glass Shades) Insured at £9700.

Specified in Catalogue exhibited to Fire Insurance Office (No. 2)

Room	Description	Valuation
East Anti Room	A pair of Candelabra, carried by bronze figures (female)	160
West Anti Room	2° d° 4 light, Lilly	180
	2° d° carried by bronze figures (female)	120
Crimson Drawing Room	Four 5 light 2° d° d° (female drapery)	550
	Four 6 light d° d° d° (Bacchantes)	800
Throne Room	Eight large 7 light Tripod Candelabra	2500
Old Throne Room	Two 3 light Lilly Candelabra, carried by gilt figures (female)	260
	Four 4 light Tripod d° with poppy branches	540
Chinese Room	Four Chinese 4 light d° with painted figures	420
South Vestibule	Four 4 light d° carried by bronze figures (female) (Cornia Copia)	500
Blue Drawing Room	Four 5 light d° d° d° with poppy branches	550
	Four Lilly d° in blue Vases	450
Bed Dining Room	Two 4 light d° carried by bronze figures (female Satyr)	180
	Four 4 light Lilly d° on gilt Vases with bronze figures (Mercur)	400
Bow Room	Two 6 light Tripod d°	300
Store Room	A pair of tall d° carried by bronze figures <sup>two</sup>	350
	Two large 5 light d° on bronze Vases	180

Together as specified in Catalogue £ 8440.

The following not specified in said Catalogue, no one being valued singly at more than £50 - No. 2

East Anti Room	A pair of 3 light Lilly branches in white Vases	90
Bed Dining Room	Four 4 light Hyacinthus Candelabra	185
Bow Room	Two small single light d°	24
Entrance Room below	Four Hyacinthus d°	185
	Two small 6 light d° carried by bronze figures	100
New Dining Room	Two 3 light d° 2° by small bronze drapery figures	90
	Four small blue Vase d°	72
S. S. H. Bed Room	Two 3 light Egyptian d°	32
Pentagon Room	Two small Lilly d° on white Vases	90
Old Bed Room	Four small d° d° d°	180
	Two 4 branch d° on Spherical figures	91
Store Room	Six 3 light d°	190

To be deducted from the above articles proportionably 72

Reducing the Value of Candelabra not specified in said Catalogue to 1260

Total sum insured on Candelabra £ 9700

Decorative Ormolu & Bronze Articles  
consisting of Sunders, Vases &c.

Insured at  
£1600.

Specified in Catalogue exhibited to Fire-Insurance Offices (viz.)		Valuation
Throne Room	Two Ormolu Sunders	300. . . . .
Chinese Room	Two Ormolu Chiffonieres with green marble tops	150. . . . .
Blue Drawing Room	Two painted Sunders mounted in Ormolu	150. . . . .
	Two Ormolu Tripods with red marble tops, bronze Sphynxes &c.	190. . . . .
Dressing Room	Mounted Porphyry Vase & Pedestal	60. . . . .
Octagon Room	Two green serpentine Sunders in bronze figures	120. . . . .
Store Room	Very handsome Ink Stand	100. . . . .
Together, as specified in Catalogue		£ 1070. . . . .

The following not specified in said Catalogue, no one  
article being valued at more than £50 - (viz.)

East Anti Room	Two Rose Wood Inkstands with bronze Vases	42. . . . .
West Anti Room	A rose wood Inkstand with bronze Vase	21. . . . .
Crivins or Draw. Room	Four blue Vases mounted in Ormolu	94. . . . .
Throne Room	Two D <sup>o</sup> . . . . .	47. . . . .
Old Throne Room	Two small gilt Vases on red marble pedestals	40. . . . .
New Room below	Two small gilt figures, Troubadour & Pilgrim	24. . . . .
New Drawing Room	Two small black Vases mounted in Ormolu	47. . . . .
Page's Room (up stairs)	Rose wood Inkstand with bronze Vases	21. . . . .
Octagon Room	Well Inkstand, marble & Ormolu	30. . . . .
Old Bed Room	An Inkstand	21. . . . .
Store Room	Inkstand with 2 Negro figures	35. . . . .
	Egyptian Inkstand	31. . . . .
	Pair of Ormolu Tripods with Kendal Antique Bowles	78. . . . .
	Pair of small white Vases mounted in Ormolu	21. . . . .
		549. . . . .

To be deducted from the sev<sup>d</sup> articles proportionably

19. . . . .

Reducing the Value of Decorative Ormolu & Bronze  
Articles not specified in said Catalogue to

530. . . . .

Total Sum insured on above Decorative Articles £ 1600. . . . .

All specified in Catalogue exhibited to Fire-Insurance Offices (viz.)

	Valuation
West Anti Room - White marble Chimney Piece with Ormolu Ornaments	£ 100. ....
Crimson Drawing Room } Two black marble Chimney Pieces	d° ..... 700. ....
South Vestibule - White Marble Chimney Piece	d° ..... <del>160.</del> 160. ....
Throne Room - Two white marble Chimney Pieces with - d° & bronze figures	1000. ....
Old Throne Room - White marble Chimney Piece with Ormolu Tripods &c.	350. ....
Chinese Room - Red marble Chimney Piece with Ormolu Ornaments	380. ....
Blue Drawing Room - White d° - d° - d° with d° Panels	300. ....
Inner Blue Room d° - d° - d° - d° with d° Ornaments	180. ....
Red Dining Room - Black d° - d° - d° with d° Panels	250. ....
Red Anti Room - White d° - d° - d° with d° Ornaments	140. ....
Box Room - d° - d° - d° - d° - d° - d°	90. ....
Octagon Room - Black d° - d° - d° - d° - d°	70. ....

## Sculpture

Large jardiniere of Rosso antico marble enriched with Ormolu	500. ....
Large Rosso antico jarre on a Porphyry Column with a richly carved white marble base	280. ....

Total sum insured on above as specified in Catalogue £4500. ....

Arms, Warlike Habilliments & Accoutrements &c<sup>a</sup> } Insured at £25,000

Specified in Catalogue exhibited to Fire-Insurance Office's - [1/2]

In the Armory

	Valuation
2816 A Chabraque, or Horse Caparison, of scarlet Cloth, ornamented with Silver Studs & Plates of Silver, Fringe &c <sup>a</sup>	100
2822 A Chabraque corresponding with the preceding	100
2179 A Housing & Petticoat bags of blue Velvet, embroidered with Gold Fringe &c <sup>a</sup>	150
1170 A Housing & Petticoat bags corresponding with preceding	150
2169 2 <sup>o</sup> d <sup>o</sup> of scarlet Velvet, embroidered with Gold fringe &c <sup>a</sup>	150
2180 2 <sup>o</sup> d <sup>o</sup> corresponding with preceding	150
2446 A Chabraque of Blue Cloth, French Gold Embroidery with fringe &c <sup>a</sup>	250
2447 A Housing & Petticoat bags of Silver Sapee embroidered	250
2656 A Turkish Caparison of black Velvet, embroidered in Gold & Sapsel fringe &c <sup>a</sup>	100
2510 The King of Candia's Throne & Court-Seat, partly cased with Gold, the back with silver, in Embossed work	350
2511	
2079 A Sabre, Gold mounted, set with Diamonds & precious Stones	150
2690 A sword mounted with Enamelled Gold set with Diamonds & precious Stones	270

Together as specified in Catalogue 2,170

Articles not specified in said exhibited Catalogue, no single article being valued at more than £50 } 22,830

See general Catalogue kept in the Armory

Total Sum insured on Arms, Warlike Habilliments, Accoutrements &c<sup>a</sup> £25,000

30  
Whore  
to  
West  
Crim  
Old  
Bow

Whereof Specified in Catalogue exhibited See fol. 11 to fol. 23.  
to Vice-Insurance Office the following -

	As in General Catalogue		Masters	Valuation proposed by the Insured	Valuation as reduced by exhibited Catalogue
				£ s d	£ s d
West Anti Room	1	Whole length of the late Duke of Cumberland	Sir Joshua Reynolds	630	500
	2	D <sup>o</sup> Louis XV.		157. 10	130
	3	D <sup>o</sup> Duke of Clarence	Hopper	367. 10	300
	4	D <sup>o</sup> William Duke of Cumberland		630	500
	5	Head of King George II.		70. 15	60
	6	D <sup>o</sup> Queen Caroline		70. 15	60
	7	Whole length of late Duke of Orleans	Sir Jos. Reynolds	1050	840
Crimson Draw. Room	8	D <sup>o</sup> Count de la Sèppe (with a negro holding a horn & a piece of ordnance in the back ground)	same	1260	1050
	9	D <sup>o</sup> Marquis of Granby (with a negro holding a horn in the back ground)	do	1260	1050
	10	Landscape with figures	Rubens	3150	2600
	11	Half length of Lord Thurlow	Sir Tho. Lawrence	210	160
	12	Portraits of the Burgomaster Penicock & his Lady	Rembrandt	850	700
	13	Half length of Lord Carshene	Sir Jos. Reynolds	367. 10	300
	14	D <sup>o</sup> St. Markham Archbishop of York	Hopper	315	250
Old Throne Room	15	Whole length of His Majesty in his Robes	Parsons	210	160
	16	D <sup>o</sup> Her Majesty in her Robes	same	210	160
	17	D <sup>o</sup> The Prince Regent	Hopper	367. 10	300
	18	D <sup>o</sup> Duke of York	Sir Jos. Reynolds	630	500
Bow Room (State floor)	19	Head of King George I.		63	60
	20	D <sup>o</sup> King George II.		63	60
				£4,938. 10	
Carried forward					£9740.

Paintings (Specified in Catalogue) continued

		Painters	Valuation as per original Catalogue	Valuation as reduced by exhibited Catalogue
		1300 <sup>l</sup> forus	41980.10	9740.00
Bois Room continued	21	French Peasants merry-making	Jeniers	630.00
	22	Landscape with figures & Cattle	Adrian Vandevelde	577.10
	23	Interior of a Dutch Cottage with a Peasants family	Adrian Ostade	810.00
	24	The Hay-field	M <sup>r</sup> . Howermans	755.00
	25	Landscape with Cattle	Albert Cuyp	315.00
	26	Departure of a Hunting Party	Adrian Vandevelde	725.00
	27	A musical party (called <u>Le cornet bleu</u> )	Gabriel Metz	367.10
	28	Sportsmen halting at door of a Cottage	Paul Potter	525.00
	29	Landscape with figures on horseback	Albert Cuyp	262.10
	30	A Camp (called <u>Le camp de Putelet</u> )	M <sup>r</sup> . Howermans	525.00
	31	Boy & Girl with a Guinea Pig & Kitten	Adrian Vander Werf	210.00
	32	Interior of a Dutch Kitchen, with figures	M <sup>r</sup> . Mieris	315.00
	33	Large Landscape with figures & horses	Albert Cuyp	420.00
	34	Landscape w. figures, cattle & man on horseback	Adrian Vandevelde	470.10
	35	D <sup>o</sup> with Stable, cattle, horses, a boy & dogs	Paul Potter	1260.00
	36	Interior of a Dutch Apartment with woman making lace	Peter van Singelandt	105.00
South Gate Room	37	Half length of Princess Augusta	Sir W <sup>m</sup> . Beechey	105.00
	38	D <sup>o</sup> Princess Elizabeth	same	105.00
	39	D <sup>o</sup> Princess Mary	d <sup>o</sup>	105.00
	40	D <sup>o</sup> Princess Sophia	d <sup>o</sup>	105.00
	41	Late Princess Amelia	d <sup>o</sup>	105.00
		Carried forward		16,660.00

		Masters	Valuation as originally assessed by the 1st. London Exhibition Catalogue 1804-10.	Valuation as exhibited Catalogue
		Bro't forward	£16,660. ....	
South Ante Room cont?	44	Whole length of Henry Prince of Wales	210. ....	160. ....
	45	D <sup>o</sup> ----- Gaston Duke of Orleans	Vandyck 525. ....	400. ....
	46	A man with a Hawk on his hand (called <i>Le Fauconier</i> )	Rubens 577. 10. ....	450. ....
Audience Room	47	Portraits of the Ship-builder & his Wife	Rembrandt 2625. ....	2000. ....
	48	View of a river, with boats	Albert Cuyp 1575. ....	1260. ....
	49	Landscape with figures	John Both 1600. ....	1400. ....
	50	Christ curing the Paralytic	Vandyck 1050. ....	840. ....
Little Blue Room	51	Departure of a Hawking Party	M <sup>r</sup> . Wouvermans 260. 10. ....	200. ....
	52	Landscape with man on a grey horse	Albert Cuyp 420. ....	350. ....
	53	D <sup>o</sup> ----- with buildings & figures	J. Vanderheyden (Adrian Vandervelde) 266. 5. ....	180. ....
	54	A Woman descending Steps	Maes 84. ....	70. ....
	55	Gentleman playing on Violoncello & Lady descending Steps	Gabriel Metzger 221. ....	180. ....
	56	Landscape with buildings & figures	J. Vanderheyden (Adrian Vandervelde) 157. 10. ....	120. ....
	57	Landscape with a Windmill	Jacob Ruysdael 420. ....	350. ....
	58	Small Portraits of King Charles I. his Queen Henrietta & the Infant Charles II.	A. Myfens 125. ....	100. ....
East Ante Room	59	Whole length of Lord Nelson	Hopfinger 210. ....	160. ....
	60	D <sup>o</sup> ----- late Duke of Bedford	same 210. ....	160. ....
	61	Half length of Sir David Dundas	Owen 157. 10. ....	120. ....
	62	Whole length of Carl Moura	Hopfinger 210. ....	160. ....
	63	D <sup>o</sup> ----- Carl St. Vincent	same 210. ....	160. ....
Stair-case	64	King George II. on Horseback (with a battle in the back ground)	125. .... 21767. 15. ....	100. ....
		Carried forward	£25,580. ....	



Paintings (specified) continued

		Masters	Valuations proposed by H. S. Lawrence	Valuations as reduced by the exhibited Catalogue
		Brook forward	31,787.15	25,580.00
Dining Room	65 Interior of a Dutch Cottage with boors	Adrian Ostade	262.10	200.00
	66 A Concert	G. Schaecken	250.00	250.00
	67 Two Ladies reading Letters, & a servant presenting coffee	G. Verburg	650.00	500.00
	68 Dutch Boors regaling	John Moen	84.00	70.00
	69 Le roi detrouffe	G. Schaecken	420.00	350.00
	70 A fresh breeze, with boats & figures	W. Vandewelde	157.10	120.00
	71 A Calm d°	same	262.10	200.00
	72 A man & a woman on horseback	Albert Cuyp	157.10	120.00
	73 Landscape with cattle	Adrian Vandewelde	250.00	250.00
	74 A Calm, with boats & figures	W. Vandewelde	262.10	200.00
Room nearly Dining Room	77 Nan & Syrina	Rubens	210.00	160.00
	78 Dutch family	Fr. Mieris Junr.	84.00	70.00
	79 Landscape with figures, a Hawking party	J. Wuyants, and Th. P. Wouwermans	210.00	160.00
	80 Blacksmith shoeing a horse, with other figures	Th. Wouwermans	75.10	60.00
	81 Dutch boors with a fiddler	Isaac Ostade	75.10	60.00
	82 A Calm, with boats & figures	W. Vandewelde	157.10	120.00
	83 Lady fainting, with attendant figures	Vetscher	157.10	120.00
	84 Landscape, with figures & horses	Albert Cuyp	262.10	200.00
	85 Do with cattle	Paul Potter	1050.00	800.00
	86 View of Sea Coast, with figures & a Carriage	Adrian Vandewelde	250.00	250.00
	87 Fishermen	Teniers	184.00	150.00
		Carried forward	29,990.15	

		Masters	Valuation proposed by Sir J. Lubbock	Valuation as reduced by exhibited Catalogue
		Brd. forward	29,490	...
Room near the Dining Room, contd.	88	Interior of a Dutch Cottage with boors	Adriaen Brouwer	126
	89	Woman scouring a kettle <i>called Le recurrence</i>	Gerard Dou	215
	90	Do. chopping Onions <i>called Le karchid d'origans</i>	same	215
	91	Dutch boors, half length figures	Adriaen Brouwer	105
	92	Kermesse, or Village festival	Teniers	275
	93	The Druggery's Shop	Wm. Micron	157.10
	94	Druggery's Shop	same	157.10
	95	A Calm, with boats & figures	Wm. Vandewilde	109
	96	Portrait of an Artist with a bust	Gabriel Metzger	109
	97	The Roman Charity	Adriaen Konderkerf	320
	98	Girl at a Window with a bunch of grapes	Gabriel Metzger	109
	99	Dutch boors, half length figures	Adriaen Brouwer	105
	100	Landscape with figures & cattle	Adriaen Vandewilde	210
	101	Gentlemen on horseback, with 2 sportsmen seated on a bank	Albert Cuyp	157.10
	102	Landscape, with figures driving cattle	Nick. Berghem	262.10
	103	Do. with cattle & a boy	Karel du Jardin	104.10
Bow Room, ground floor	105	Do. with figures & cattle	Nick. Berghem	157.10
	106	An interior, with boors smoking	Adriaen Brouwer	215
	107	Landscape with Cattle	Karel du Jardin	315
	109	Assumption of the Virgin	Rubens	630
	110	Landscape with Cattle	Karel du Jardin	210
		Carried forward	34,100	...

Paintings (specified) continued

	No. in General Catalogue		Masters	Valuation proposed by Mr. Lawrence	Valuation as reduced by exhibited Catalogue
				£22,603.15	
				Bro? forward	£34,100
Bow Room ground floor continued	111	Landscape, with figures & cattle	Nick? Berghem	262.10	200
	112	A Peasant's Waggon attacked by robbers	M <sup>r</sup> . Wouermans	262.10	200
	113	Landscape with a bog & a pees	Karel du Jardin	126	100
	114	Lady with a Lap dog, a man pulling its ear	Jra <sup>s</sup> . Mieris Sen <sup>r</sup>	189	150
	115	Ruins, with figures	Barth <sup>l</sup> . Breemberg	126	100
	116	The Adoration of the Kings	Rembrandt	1575	1260
	118	An interior, with boots regaling	Adrian Ostade	210	160
	119	Peasants playing at cards	Teniers	347.10	300
Anti Room ground floor	120	Landscape, with a Stag hunt	Hackaert and Berghem	157.10	120
	121	D <sup>o</sup> - small, with figures	Teniers	84	70
	122	D <sup>o</sup> - d <sup>o</sup> - d <sup>o</sup>	same	84	70
	123	Girl selling fruit to an old woman	Gerard Dow	236.5	200
	124	Wild Ducks in a Landscape	Albert Cuyp	84	70
	125	Study of men on horseback	Vandyck	145	80
	126	Lady drinking a glass of wine	M <sup>r</sup> . Mieris	262.10	200
	127	Buildings with figures	J. Vanderheyden & Willem Vanderwille	245	250
	128	Teniers's family with the gardener	Teniers	157.10	120
	129	Portraits of a Burgomaster & his family	Parent Grant	162.10	120
	130	Interior of a Dutch musicio	John Steen	168	130
	131	Landscape with figures & cattle	Nick? Berghem	170.10	140
	132	Landscape with a Windmill	Hobema	210	150
				£47,927	
				Carr? forward	£38,290

Colonie

the Prince of the Atlantic

Middle Joining

		Masters	Valuation as reduced by exhibited catalogue
		Bro't forward	£ 38240. - - -
Colonnade Room 133	Landscape with herdsmen driving cattle	Nick. Berghem 315. ....	250. ....
134	A Horse-fair	H. Wouvermans 525. ....	400. ....
135	A Kermesse, or Village festival	Teneirs 472. 10.	400. ....
136	D <sup>o</sup> D <sup>o</sup>	same 367. 10.	300. ....
<i>Belgiana Regula</i> Attic North Room	137 Landscape with figures & cattle	Nick. Berghem 400. ....	350. ....
138	The smoker	W. Mieris 157. 10.	120. ....
139	Woman playing on the guitar, with other figures	63. ....	60. ....
141	Dutch family at table	John Steen 126. ....	100. ....
143	Landscape with figures at door of an Ale house	Isaac Ostade 105. ....	80. ....
145	D <sup>o</sup> with Cattle	Adriaen Vandevelde 315. ....	250. ....
147	D <sup>o</sup> with figures	Hobema 210. ....	150. ....
148	A Lady drinking a glass of wine	G. Terburg 157. 10.	120. ....
<i>Middle Attic</i> <i>(Joining the Service)</i> <i>(West Room)</i>	151 March of the Acadians	Kobell 84. ....	70. ....
152	Halt of D <sup>o</sup>	same 73. 10.	60. ....
158	A battle	D <sup>o</sup> 84. ....	70. ....
159	D <sup>o</sup>	D <sup>o</sup> 84. ....	70. ....
161	The Drummer	Teneirs 105. ....	80. ....
162	Interior of a Gardener's house, with a woman feeding turnips	same 630. ....	500. ....
163	A Masquerade	Watteau 84. ....	70. ....
* 163	A scene from a french comedy	same 84. ....	70. ....
164	The Alchemist	Teneirs 210. .... 152, 599. 10.	150. ....
		Car'd forward	£ 42,010. - - -

Paintings (specified) continued

		Masters	valuation as registered by the Trustees 1857-59	valuation as registered by published Catalogue
		Car. forward	£52,599.10.0	£42,010.0.0
Middle Attic continued	165	A hall of Hawks Jh. Wouvermans	262.10.0	200.0.0
	166	The young gamesters Le Nain	136.10.0	100.0.0
	167	A lady feeding a parrot Grot. Mieris Senr.	210.0.0	160.0.0
Bed Room	169	Portrait in Enamel of D. Markham Arch. Bishop of York Bone	70.15.0	70.0.0
	170	Do Do Sir Joshua Reynolds same	147.0.0	120.0.0
	171	Do Do Marquis of Landsdown do	94.10.0	80.0.0
	172	Do Do Lord Nelson do	96.10.0	80.0.0
	173	Do Do Rt. Hon. Cha. Fox do	180.12.0	140.0.0
	174	Do Do Earl S. Vincent do	94.10.0	80.0.0
	175	Do Do Prince of Orange do	78.15.0	70.0.0
	176	Do Do His Majesty do	157.10.0	120.0.0
	177	Do Do Her Majesty do	157.10.0	120.0.0
	178	Do Do late Princess Amelia do	105.0.0	80.0.0
	179	Do Do Cupid & Psyche do (from Reynolds)	282.1.0	200.0.0
	180	Do Do Lycinus & Sphegenia do (from Reynolds)	446.13.6	350.0.0
	181	Do Do Jupiter & Io do (from Conybe)	144.15.0	120.0.0
	182	Do Do Sidiel do	121.10.0	100.0.0
	183	Do Do Death of Dido do (from Reynolds)	446.13.6	350.0.0
	184	Do Do A Nymph & Cupid do (from Reynolds)	228.10.0	200.0.0
	185	Do Do The holy family do (from An. Carracci)	340.5.0 £56,355.4.0	280.0.0
		Car. forward	£45,030.0.0	

		Masters	Valuation proposed by Sir John Lawrence #66,355-4	Valuation as reduced by deducted Catalogue
			Wrot. forward	£45,030
Bed Rooms continued	186 Portraits in Enamel of The holy family, with our angel, presenting fruit	More (from Parmigianino)	310.5	280
	187 D <sup>o</sup> S <sup>t</sup> . Agnes	D <sup>o</sup> (from Domenichino)	366.75	280
	188 D <sup>o</sup> Hope Nursing Love	D <sup>o</sup> (after Reynolds)	220.10	200
	189 D <sup>o</sup> The holy family (called the Silence)	D <sup>o</sup> (from Ann. Caracci)	500	400
	190 D <sup>o</sup> D <sup>o</sup>	D <sup>o</sup> (from Sim <sup>o</sup> . di Pesaro)	110.75	120
Store Room	204 Horses watering & figures bathing	M <sup>r</sup> . Wouvermans	84	70
	206 Hare & other dead Game	Weenix	84	70
	213 Blindman's buff	Wilkie	630	500
	214 The country choristers	Bird	262.10	200
	215 The Mall in S <sup>t</sup> . James's Park, w <sup>th</sup> many portraits	Hogarth	84	70
	216 View of Greenwich Park, w <sup>th</sup> portraits of Charles I. his Queen & Courtiers		105	80
	217 A battle piece	M <sup>r</sup> . Wouvermans	126	100
	218 A large tapestry of Dutch boors	John Steen	73.10	60
	222 Cypriote & Sphigonia	Sir J <sup>o</sup> . Reynolds	1050	800
	233 Whole length of Col <sup>l</sup> . S <sup>t</sup> . Leger	Gainsborough	262.10	200
	235 D <sup>o</sup> His Majesty in Windsor Uniform	Gainsborough Dupont	73.10	60
	236 D <sup>o</sup> the late Prince of Wales in his robes		60	60
	237 D <sup>o</sup> the late Princess of Wales, his consort	Ramsay	315	250
	238 D <sup>o</sup> late Duke of Rutland in his robes	Sir J <sup>o</sup> . Reynolds	630	500
	239 D <sup>o</sup> Marquis of Rockingham D <sup>o</sup>	same	315	250
			#62,094.17	
			Car <sup>r</sup> . forward	£49,580

Paintings (specified) continued

No. in  
Inventory  
Catalogue

Masters

Valuation  
proposed by  
the  
Inventory  
as reduced by  
the  
exhibited Catalogue

£ 49,094.17

Brought forward £ 49,580. ....

Store Room  
continued

240	Whole length of Queen Caroline, with the Duke of Cumberland when a boy		105	80
241	D <sup>o</sup> Elphi Bey, with Col <sup>l</sup> Moore	La Conques de Tott	84	70
242	D <sup>o</sup> Her Majesty with the Prince of Wales when an Infant	Ramsay	315	250
243	D <sup>o</sup> of two of the Princesses, sisters to his Majesty	same	210	160
244	D <sup>o</sup> Prince's Royal, Princess Augusta, Princess Elizabeth	Gainsborough	625	400
245	D <sup>o</sup> M <sup>r</sup> Fisher, the celebrated hautboy-player	same	630	500
248	D <sup>o</sup> late Duchess of Brunswick, with the infant Duke		105	80
250	D <sup>o</sup> Frederick King of Prussia		84	70
251	D <sup>o</sup> (small) late Duke & Duchess of Cumberland with Lady Eliz <sup>th</sup> Luttrell	Gainsborough	157.10	120
253	D <sup>o</sup> Earl of Eglinton	Sir Jos <sup>ph</sup> Reynolds	105	80
256	D <sup>o</sup> Half length of Admiral Payne		105	80
258	D <sup>o</sup> Lord Hutcheson	Sir W <sup>m</sup> Beechey	105	80
259	D <sup>o</sup> Lord Keith	Hoppner	105	80
270	D <sup>o</sup> Portrait of M <sup>rs</sup> de Calonne	Madame Le Brun	107.10	120
275	D <sup>o</sup> Interior of an Apartment at Windsor with portraits of Her Majesty, the Prince of Wales & Duke of York	Zoffany	60	60
276	D <sup>o</sup> of another Apartment with like portraits	same	210	160
277	D <sup>o</sup> His Majesty on a white horse, attended by the Marquis of Granby & other officers	J. M. Guadael	105	80
278	D <sup>o</sup> Whole length of Lord Rodney	Sir Jos <sup>ph</sup> Reynolds	630	500
279	D <sup>o</sup> Adm <sup>l</sup> Lord Keppel	same	630	500
280	D <sup>o</sup> Departure of Louis XVIII. from Dover, with portraits of the Prince Regent, Duke of Clarence &c	Bird	1050 £ 67,575.17	800

Carried forward £ 53,050. ....

More  
cont.

		Masters	Valuation as proposed by Sir Tho. Lawrence	Valuation as reduced by exhibited catalogue
			£67,575.17	
			brod <sup>d</sup> forward	£53,850.00
More Room continued	282 Whole of Louis XVI.		126	100
	* 283 Portraits of late Prince of Wales & members of la Table Ronde	Wootton	105	80
	287 Head of Rembrandt	by himself	105	80
	290 Half length of M <sup>r</sup> . Garrick as Kitely	Sir Jos <sup>ph</sup> . Reynolds	105	80
	294 3 <sup>d</sup> --- His Majesty when young	same	210	160
	295 2 <sup>d</sup> --- Sir Joshua Reynolds with spectacles	by himself	262.10	200
	356 2 <sup>d</sup> --- of a Rabbi	Rembrandt	80	60
	379 2 <sup>d</sup> --- The R <sup>th</sup> . Hon <sup>ble</sup> . Colonel M <sup>r</sup> . Mahon	Sir Tho <sup>s</sup> . Lawrence	100	100
	380 Small whole length of King George II.		105	80
	381 The late Lord Huttfield on a Chestnut horse	Aggas	105	80
	387 Prince Blucher on Horseback	Stroehling	126	100
	388 The Hetman Platoff - 2 <sup>d</sup>	same	126	100
	389 The Marquis of Anglesea 2 <sup>d</sup>	2 <sup>d</sup>	105	80
	390 The Prince Regent on a grey horse	2 <sup>d</sup>	105	80
	391 The Prince Regent	2 <sup>d</sup>	131.5	100
	392 Small whole length of Her Majesty	2 <sup>d</sup>	84	60
	393 2 <sup>d</sup> --- the Princess Augusta	2 <sup>d</sup>	84	60
	394 2 <sup>d</sup> --- Princess Elizabeth	2 <sup>d</sup>	84	60
	395 2 <sup>d</sup> --- Princess Mary	2 <sup>d</sup>	84	60
	396 2 <sup>d</sup> --- Princess Sophia	2 <sup>d</sup>	84	60
	397 2 <sup>d</sup> --- late Princess Amelia	2 <sup>d</sup>	84	60
			£67,905.12	
			carried forward	£55,690.00



## Paintings (specified) continued

		Masters	Valuation as proposed by Sir H. Lawrence £49,905.12.0	Valuation as reduced by exhibited Catalogue £55,690.0.0
More Receipts continued	398 Small whole length of the Duchess of York	Strochling	84.00	60.00
	399 Do Queen of Prussia	same	84.00	60.00
	400 Do Duke of Kent	do	84.00	60.00
	401 Do Duke of Sussex	do	84.00	60.00
	402 Prince Louis of Prussia engaged with a french hussar	do	105.00	80.00
	403 Ganymede	do	84.00	60.00
	404 Herodias with the head of S. John	Quinten Matsys	157.10	120.00
	405 Large Landscape with figures & cattle	Albert Cuyp	262.10	200.00
	413 A running horse at speed (rode by Shipney)	Hubbs	105.00	80.00
	414 Portrait of a grey horse	same	105.00	80.00
	415 Do bay horse, with Gascon the groom	do	84.00	60.00
	416 Grey horse, with the head of a bridle	do	105.00	80.00
	417 Chestnut saddle horses, with Anderson the groom	do	136.10	100.00
	418 Sir W. Meadows on a bay charger	do	157.10	120.00
	420 A Phaeton with pair of black horses, Thomas the stable Coachman, & a boy	do	136.10	100.00
	421 Portraits of a buck & a doe	do	105.00	80.00
	423 Do two dogs (Finn & Finn)	do	63.00	60.00
	424 Do of N. Sauthagen & three dogs	do	168.00	130.00
	425 Do of South on a Chestnut running horse	do	105.00	80.00
	426 Do of a sorrel & a Chesnut horse, with a dog	do	210.00	160.00
	433 Do a roan, a brown, & a white horse	Gilpin	262.10 £49,905.12.0	200.00
		Carried forward		£57,720.0.0

As in  
general  
Catalogue

	Masters	Valuation as proposed by the Insurance Company £72,475.12	Valuation as reduced by the exhibited Catalogue
		prot. forward	£57,720. ....
More Room continued	444 Portrait of the horse Saltram, with a groom	W. Garrad	60. ....
	445 D <sup>o</sup> of Verigo & other horses	same	105. ....
	448 D <sup>o</sup> of Calash & D <sup>o</sup>	d <sup>o</sup>	60. ....
The Armory	493 Battle of Waterloo	Dighton	80. ....

Together Paintings as specified in Catalogue £50,000. ....

Add Paintings not specified in said exhibited Catalogue (no one being to be valued in case of fire at more than £50), of which unspecified Paintings see the following list from fol: 24 to 31 ----- } 4000. ....

Total sum insured on Paintings in Carlton House £62,000. ....

	no. in general catalogue		Masters	Valuation subject to proportionate reduction in case of fire - stated
South Attic Room	42	Half length of Madame de Pompadour		50. . . .
			52. 10. . .	
	43	D <sup>o</sup> Louis XV. when a boy		50. . . .
			52. 10. . .	
Room next dining Room	75	A Dutch boer, half length	Adrian Ostade	26. 5. . .
	76	A girl	same	26. 5. . .
	103	A woman playing on the guitar	Teneers	42. . . .
Bow Room ground floor	100	The Alchemist	same	42. . . .
	117	Pigs	Paul Potter	26. 5. . .
Attic Attic room	140	A gallant subject	Watteau	50. . . .
			52. 10. . .	
	142	Dead game	Jansen	50. . . .
			52. 10. . .	
	144	The trictrac-players	after A. Ostade	15. 15. . .
	146	An old man giving money to a girl	John Steen	50. . . .
			52. 10. . .	
Middle Attic parlour & dining bedroom	149	A landscape with figures	Isaac Ostade	42. . . .
	150	A winter scene, with figures on ice	J. M. Wouvermans	15. 15. . .
	153	A view in Rome with figures	John Kuel	47. 5. . .
			29. Lingelbach	
	154	The interior of a corps de garde	Teneers	21. . . .
	155	A gallant subject	Watteau	10. 10. . .
	156	D <sup>o</sup>	same	10. 10. . .
	157	A herdman with cattle	Lady Siddel	21. . . .
	160	The milkmaid	Molenaer	26. 5. . .
	The Prince Regent's bed room	191	Portrait in Enamel of the Earl of Charlemont	None
192		D <sup>o</sup> late Duke of Bedford	Grimaldi	26. 5. . .
193		D <sup>o</sup> Lord Sandon	d <sup>o</sup>	26. 5. . .
194		D <sup>o</sup> Lord Rodney	d <sup>o</sup>	26. 5. . .
195		D <sup>o</sup> Sir Joshua Reynolds	d <sup>o</sup>	26. 5. . .
196		D <sup>o</sup> present Duke of Bedford	d <sup>o</sup>	26. 5. . .
197		D <sup>o</sup> His Majesty	d <sup>o</sup>	26. 5. . .
198		D <sup>o</sup> Her Majesty	d <sup>o</sup>	26. 5. . .
199		D <sup>o</sup> Dukes of York	d <sup>o</sup>	26. 5. . .
			Carried forward	038. . . .

The Prince  
Regent's  
bedroom

The Duke

No. in general Catalogue	Description	Master	Valuation subject to proportional reduction as hereafter stated
		Carried forward	838. . .
The Prince Regent's Old Bed-room continued	200 Portrait in Enamel of Princess Mary (copy in drawing)	Bacon	31. 10. . .
	201 Louis XIV. on horseback, crowned by Fame		21. . . .
The Store Room	203 A kitchen	Giacomo Casanova	15. 15. . .
	205 A body of Cavalry in armour, & figures attacking a house - an old Dutch painter		10. 10. . .
	207 Dutch man attended by other figures	style of Lucas Van Leyden	10. 10. . .
	208 Christ bearing his Cross	Van Harp	31. 10. . .
	209 Portrait of a lady represented as a shepherdess		5. 5. . .
	210 Painting crowned by Love	after Guido Reni	15. 15. . .
	211 View of the farm house, called la belle-alliance, with figures driving cattle to the camp	De Poi	21. . . .
	212 Hawks, and a dog, in a landscape	Hondecooter	36. 15. . .
	219 Landscape with figures	M <sup>rs</sup> Serres	15. 15. . .
	220 " " " "	same	15. 15. . .
	221 A set of ten views in Venice	after Canaletti	21. . . .
	223 A view, supposed to be of the old Horse-guards, with the king going to the Council		5. 5. . .
	224 View in Windsor park by moonlight	John Jacob Schalk	6. 6. . .
	225 " " " " with swans, a boat, & a Chinese bridge	same	6. 6. . .
	226 " " " " with a man driving a cart	" "	6. 6. . .
	227 " " " " with swans, ducks & sheep	" "	6. 6. . .
	228 " " " " with figures, a barge & boatman		1. 1. . .
	229 " " " " with a Chinese bridge & sheep grazing		1. 1. . .
	230 " " " " with Wood-cutter, & " "		1. 1. . .
	231 Landscape with figures (much damaged)		1. 1. . .
	232 " " with a nymph, satyr & cupids (much damaged)		1. 1. . .
	234 Whole length of M <sup>rs</sup> Robinson, with a white fox dog	Quarshorn 2315	50. . . .
	246 " " of Marshal Beron	Polosan	42. . . .
	247 " " King George II. seated in his robes	M <sup>rs</sup> Horner	42. . . .
	249 An unfinished portrait of M <sup>rs</sup> Withersbest	Romney	31. 10. . .
	252 Half length of Marshal Volras	Mignard	31. 10. . .
	254 An unfinished portrait of the late Duchess of Cumberland	Quarshorn = 52. 10. . .	50. . . .
		Carried forward	1372. 14. . .

## Paintings (not specified) continued

No. in general catalogue	Description	Master	Valuation subject to proportionate reduction, for copies made
		Bro: forward	£ 1372. 14. ..
More Room continued	255 The Prince of Wales on a chestnut horse		42. ..
	257 Half length of General Sir W. Congreve in uniform of the Artillery	Landseale	21. ..
	260 Small portrait of William Duke of Cumberland in a scarlet uniform		21. ..
	261 William Duke of Cumberland on a bay horse, with troops in the back ground		36. 15. ..
	262 The same, on a white horse, with Lord Sigonien & an enclosure		36. 15. ..
	263 D <sup>o</sup> on a chestnut horse		50. ..
	264 D <sup>o</sup> D <sup>o</sup> with a battle in the back ground	52. 10. ..	31. 10. ..
	265 King George II. on a grey horse, with troops	d <sup>o</sup>	31. 10. ..
	266 The late Prince of Wales, on a grey horse		21. ..
	267 King George II. on a grey horse, with a battle in the back ground		10. 10. ..
	268 His Majesty on a grey horse, attended by a general with a star, & other officers' troops in the back ground		42. ..
	269 His Majesty on a grey horse with troops in the back ground		10. 10. ..
	271 Half length of Count de la Lippe		10. 10. ..
	272 D <sup>o</sup> General Spalcken		26. 5. ..
	273 D <sup>o</sup> Prince Ferdinand	52. 10. ..	50. ..
	274 D <sup>o</sup> Duke of Brunswick	52. 10. ..	50. ..
	281 The Duke of Marlborough, on horseback		10. 10. ..
	283 Small portrait of the late Prince of Wales, with two sportsmen, in a landscape	Wootton	31. 10. ..
	284 Half length of Sir Joshua Reynolds	a copy from the portrait by himself	10. 10. ..
	285 D <sup>o</sup> M. Porceval	Sorby	36. 15. ..
	286 D <sup>o</sup> late Duke of York in a naval uniform	Sir Jos. Reynolds	42. ..
	287 D <sup>o</sup> Louis XIV.		10. 10. ..
	288 D <sup>o</sup> Cardinal		26. 5. ..
	291 D <sup>o</sup> General Borkine	Co. way	26. 5. ..
	292 D <sup>o</sup> Admiral Edwards		21. ..
	293 Portraits of late Prince of Wales, & the members of Henry V.'s club	Wootton	21. ..
	296 Half length of Lady Melbourne		42. ..
	297 D <sup>o</sup> a Lady with a negro servant		21. ..
		Carried forward	£ 2163. 4. ..

More Room  
continued

Store Room continued	No. in General Catalogue	Masters	Valuation subject to proportional reduction for insurance
		13rd. form 2	2163. 4. --
	298	Half length of the Duke of Berg	15. 15. --
	299	D <sup>o</sup> of a Nobleman	5. 5. --
	300	D <sup>o</sup> a lady with a pearl necklace	21. --
	301	D <sup>o</sup> a man with a watch in his hand	15. 15. --
	302	D <sup>o</sup> a Nobleman with the blue ribbon	5. 5. --
	303	D <sup>o</sup> with a breast plate, blue sash & <sup>George</sup> style of Cornelius Jansen	7. 7. --
	304	D <sup>o</sup> a Nobleman	2. 2. --
	305	Portrait, supposed that of the Kabob of Oude	10. 10. --
	306	Half length of King George II. in royal robes	5. 5. --
	307	D <sup>o</sup> Johan Adolphus Duke of Saxe Weissenfels Desme	21. --
	308	D <sup>o</sup> Frederica Duchess of D <sup>o</sup> same	50. --
	309	Small whole length of the Prince of Wales	52. 10. --
	310	Portrait of M <sup>rs</sup> S <sup>t</sup> . George	1. 1. --
	311	Small D <sup>o</sup> of Jesse Eliz <sup>th</sup> Princess of Anhalt Zerbst	
	312	Small bust	
	314	Half length of a lady with a rose in her hand, & a <sup>king dog</sup>	5. 5. --
	315	Portrait of a lady holding a basket of flowers	
	316	Half length of a Nobleman	10. 10. --
	317	D <sup>o</sup> of the Princess Amelia, aunt to his Majesty.	26. 5. --
	318	D <sup>o</sup> of a Nobleman with the order of the Elephant	2. 2. --
	319	D <sup>o</sup> with two genii, one holding a lyre Amiconi	26. 5. --
	320	Portrait of a young Prussian prince carying <sup>a dog</sup>	10. 10. --
	321	D <sup>o</sup> a boy, in full dress	5. 5. --
	322	Half length of the late Prince of Wales, with Windsor <sup>(castle in the background)</sup>	
	323	An unfinished head of the late Duke of Cumberland Gainsborough	21. --
	324	Portrait of a young man	
	325	Half length of a young Nobleman	5. 5. --
	326	The Chevalere d'Éon fencing with M. de S <sup>t</sup> . George	
	327	An unfinished Half length of M <sup>rs</sup> Fitzherbert - Gainsborough	21. --
		Carried forward	2456. 16. --

## Paintings (not specified) continued

No. in general Catalogue		Master	Valuation subject to proportionate reduction hereafter stated	
		Brot. forward £	2456. 16. ..	
More Room continued	328 Half length of Major Hanger, near Lord Coleraine	Beach	10. 10. ..	
	329 Sketch of the large picture of M <sup>rs</sup> Robinson, with a white fox dog	Gainsborough	26. 5. ..	
	330 Half length of Signora Baccelli, with a book		1. 1. ..	
	331 D <sup>o</sup> --- a lady with an ermined mantle		1. 1. ..	
	332 D <sup>o</sup> --- a hobbleman in a blue & gold dress			
	333 D <sup>o</sup> --- a gentleman in a large wig		5. 5. ..	
	334 D <sup>o</sup> --- a lady in an ermined mantle		1. 1. ..	
	335 D <sup>o</sup> --- a young lady with fruit			
	336 D <sup>o</sup> --- a lady with a blue mantle ermined			
	337 D <sup>o</sup> --- a lady with a star, in an ermined mantle			
	338 D <sup>o</sup> --- a nobleman with a star & blue ribbon			
	339 D <sup>o</sup> --- D <sup>o</sup> --- with a cuirasse			
	340 D <sup>o</sup> --- D <sup>o</sup> --- with a red mantle & blue ribbon			
	341 D <sup>o</sup> --- D <sup>o</sup> --- in armour with a red mantle			
	342 D <sup>o</sup> --- D <sup>o</sup> --- D <sup>o</sup> --- with a large wig & red mantle			
	343 D <sup>o</sup> --- D <sup>o</sup> --- D <sup>o</sup> --- with a red mantle			
	344 D <sup>o</sup> --- D <sup>o</sup> --- D <sup>o</sup> --- holding a transfusion		5. 5. ..	
	345 D <sup>o</sup> --- a lady with a red drapery		5. 5. ..	
	346 D <sup>o</sup> --- a gentleman with a large wig & a long neck cloth			
	347 D <sup>o</sup> --- Her Majesty when young			
	348 D <sup>o</sup> --- Her Majesty --- D <sup>o</sup> ---			
	349 D <sup>o</sup> --- a young hobbleman, with a star & blue ribbon			
	350 D <sup>o</sup> --- a hobbleman, with a red coat, star & D <sup>o</sup> ---			
	351 Head of a lady with a nosegay			1. 1. ..
	352 D <sup>o</sup> --- D <sup>o</sup> --- with a fan			
	353 D <sup>o</sup> --- a boy holding a bow			
	354 D <sup>o</sup> --- a lady in green drapery, with a nosegay			
	355 D <sup>o</sup> --- a young Prussian Prince in a uniform			
	357 Small whole length of King George II.		31. 10. ..	
	358 Louis XIV. on a white horse		42. ... ..	
	359 Half length of the late Prince of Wales		5. 5. ..	
	360 D <sup>o</sup> --- Louis XV. when a boy		2. 2. ..	
	361 D <sup>o</sup> --- the Queen of Württemberg		26. 5. ..	
	362 D <sup>o</sup> --- M <sup>rs</sup> Fitzherbert, unfinished	Sir J <sup>as</sup> Reynolds 1757. 10. ..	50. ... ..	
	363 D <sup>o</sup> --- D <sup>o</sup> Hayda, --- D <sup>o</sup> (like 365. Bantlewood)	Hoffner	26. 5. ..	
	366 Portraits of three of the royal children	(Crayons)	50. ... ..	
	367 D <sup>o</sup> --- D <sup>o</sup> --- D <sup>o</sup> ---	152. 10. 0		
		Car? forw £	2759. 9. ..	

More R  
contn

30886 Paintings (not specified) continued

No. in general Catalogue		Masters	Valuation, subject to proportionate reduction hereafter in the sale
		Carried forward	2759. 9. ..
Store Room continued	368	Half length of a gentleman	like Kneller 5. 5. ..
	369	do do do	do 10. 10. ..
	370	do in armour, with a high ruff	do 5. 5. ..
	371	do an Artist, with a drawing in his hand	believed Stanneman 31. 10. ..
	372	do a Nobleman in armour, holding a <sup>to be checked</sup>	do 10. 10. ..
	373	do a lady with a high ruff, & a fan in her <sup>hand</sup>	do 2. 2. ..
	374	do do in brown drapery	do 2. 2. ..
	375	do King Charles I.	after Vandyck 5. 5. ..
	376	do Charles XII. of Sweden	do 1. 1. ..
	377	do a Nobleman in robes, with the Collier <sup>&amp; George</sup>	do 1. 1. ..
	378	do Abel, the musician	Rich <sup>d</sup> . Wilson 31. 10. ..
	382	do Mrs. Fitzherbert <sup>(Straynes)</sup>	Rapall = 84. ... 50. ...
	386	Small whole length of Charles XII. <sup>3031 from Hampton Court 3032</sup>	do 1. 1. ..
	406	Head of a female (much damaged)	do 1. 1. ..
	407	Still-life	William Kalf 10. 10. ..
	408	Portrait of a grey Arab	Schwanfelder 42. ...
	409	do Barbarossa (a horse)	Chalon 31. 10. ..
	410	do Criville do	same 31. 10. ..
	411	do Selim do	do 12. ...
	412	do Sir David do	do 31. 10. ..
	419	Portrait of Mrs. Hill on a chestnut horse	Stubbs = 157. 10. 00 50. ...
	422	do a rough dog, lying	same = 52. 10. 00 50. ...
	427	do 2 cream coloured horses harnessed, with a boy at the stable door	do 21. ...
	428	do King Herod (a horse) with a boy in a crimson & blue livery	Gilpin 21. ...
	429	do dark chestnut horse with green in space livery	same 21. ...
	430	do bay horse with a groove do	do 21. ...
	431	do roan horse do do	do 21. ...
	432	do His Majesty's white charger, saddled with scarlet furniture, led by a groom in royal livery	Sartorius 10. 10. ..
	434	do a bay horse	Gilpin 31. 10. ..
		Carried forward	3353. 12. ..



Paintings (not specified) continued

	No in general Catalogue	Description	Masters	Valuation subject to proportional reduction hereafter stated	
Lore Room continued	435	Portrait of a bay horse, saddled, with a groom in the royal livery	Hubbs	3353. 12. -	
	436	D <sup>o</sup> of Hollybeck (horse) with a shepherd & his herds in a landscape	Hubbs the horse by Hubbs landscaps by Kerse figures by Boucher	52. 10. -	
	437	D <sup>o</sup> - a cream coloured Charger, with blue furniture & a groom	Hamilton	31. 10. -	
	438	D <sup>o</sup> - a bay charger, with scarlet & black embroidered furniture	same	36. 15. -	
	439	D <sup>o</sup> - late Earl of Pembroke on a cream coloured Charger		5. 5. -	
	440	D <sup>o</sup> - of a chestnut horse	Schwanfeldter	31. 10. -	
	441	D <sup>o</sup> - a bay horse	same	36. 15. -	
	442	D <sup>o</sup> - a White Arab (horse)	Garrard	52. 10. -	
	443	D <sup>o</sup> - Saltram - D <sup>o</sup>	same	52. 10. -	
	446	D <sup>o</sup> - Anvil - D <sup>o</sup>	D <sup>o</sup>	52. 10. -	
	447	D <sup>o</sup> - Wlyffes - D <sup>o</sup>	D <sup>o</sup>	52. 10. -	
	The Armory	449	The Prince of Hessa Caspel, on a white horse		7. 7. -
		450	A Turk on a grey horse		2. 2. -
		451	Peter the Great on horseback		15. 15. -
		452	Half length of Marshal Broglie		10. 10. -
453		Two privates of 11g <sup>th</sup> Regiment		2. 2. -	
454		Half length of the Emperor Alexander	Boaden	5. 5. -	
455		A set of eight small whole lengths of Knights		5. 5. -	
456		The King of Prussia on horseback		3. 3. -	
457		The King of Denmark on a bay horse		3. 3. -	
458		William Duke of Cumberland on a grey horse		3. 3. -	
459		A grenadier guardsman		3. 3. -	
460		King George II. on a white horse		3. 3. -	
461		The Empress Elizabeth, daughter of Peter the great		10. 10. -	
462		His Majesty on a bay horse		5. 5. -	
463		Half length of Charles XII. of Sweden		1. 1. -	
464		Gustavus Adolphus King of Sweden		7. 7. -	
465		Half length of the Duke of Mecklenburg Stralitz		10. 10. -	
466		Head of the Emperor Joseph II.		5. 5. -	
467		Marshal Saxe on horseback		2. 2. -	
468		A private of Ellicks Light-horse		3. 3. -	
469		Another private of D <sup>o</sup>		3. 3. -	
470		The King of Denmark on a grey horse		2. 2. -	
471		A private of the Blues		3. 3. -	
472		D <sup>o</sup> - of the grenadier guards		2. 2. -	
473		A kettle drummer of D <sup>o</sup>		2. 2. -	
474		Half length of Frederick King of Prussia		10. 10. -	
475		D <sup>o</sup> - of Prince Henry of Prussia		10. 10. -	
				Carr? forward £ 3919. 13. -	

The Armory

At the end of  
general Catalogue

3919. 13. 0

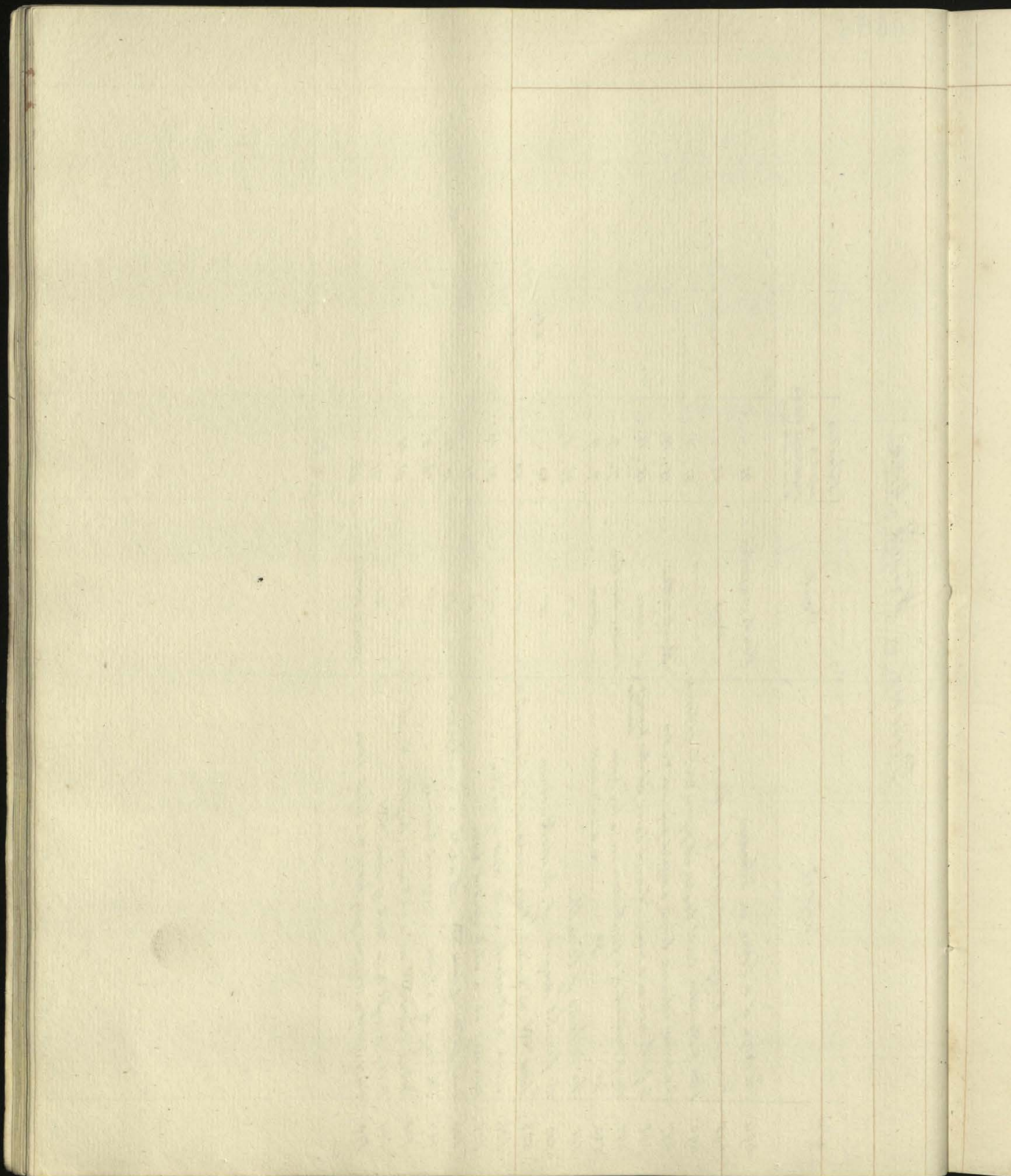
No. in general Catalogue		Masters	Valuation subject to proportionate deduction stated at the bottom thereof
			Book forwarded £ 3919. 13. ...
The Treasury cont.	476 Half length of Prince Ferdinand		15. 15. ..
	477 do the Emperor Joseph II.		15. 15. ..
	478 do (unknown)		15. 15. ..
	479 His Majesty on a grey horse		10. 10. ..
	480 Two corporals, a trumpeter, & a private of the 10 <sup>th</sup> L <sup>th</sup> Dragoons	Stubbs	50. ...
	481 William Duke of Cumberland on a bay horse		52. 10. 0
	482 The Marquis of Granby		10. 10. ..
	483 Head of the Emperor Joseph II.		1. 1. ..
	484 (unknown) on a dun horse		21. ...
	485 do on a bay horse		21. ...
	486 Charles Prince of Nassau on a black horse	Parrocel	21. ...
	487 (unknown) on a pied horse	same	21. ...
	488 Interior of a Dutch coffee house	Grooth	7. 7. ..
	489 a small crayon portrait of the Duke of York		2. 2. ..
	490 a small oil portrait of the Duke of Clarence	Gainsborough	10. 10. ..
	491 Half length of Jerome Bonaparte		15. 15. ..
	492 Battle of the Katzbach, between the Russians & Prussians and the French		26. 5. ..
At the end of the general Catalogue	527 Two blacks, with a female <small>494 to 526. Pictures in Warwick House 527 to 529. Drawings</small>		21. ...
	528 The Allies taking possession of Antwerp	Van Brie	15. 15. ..
	529 a large landscape (Carnarvon Castle with figures)	Louthenbourg	50. ...
	530 Portraits of the Prince of Wales & Duke of York, when duchen	Zoffany	50. ...
	531 do Duke of Clarence & the Princess Royal	same	50. ...
		Together	£ 4382. 3. ...
		To be deducted from the respective values proportionately	382. 3. ...
		Total sum insured on Paintings not specified in the Catalogue exhibited to the Fire- Insurance Office	£ 4000. ... See added to amount of specified Paintings, fol. 23.

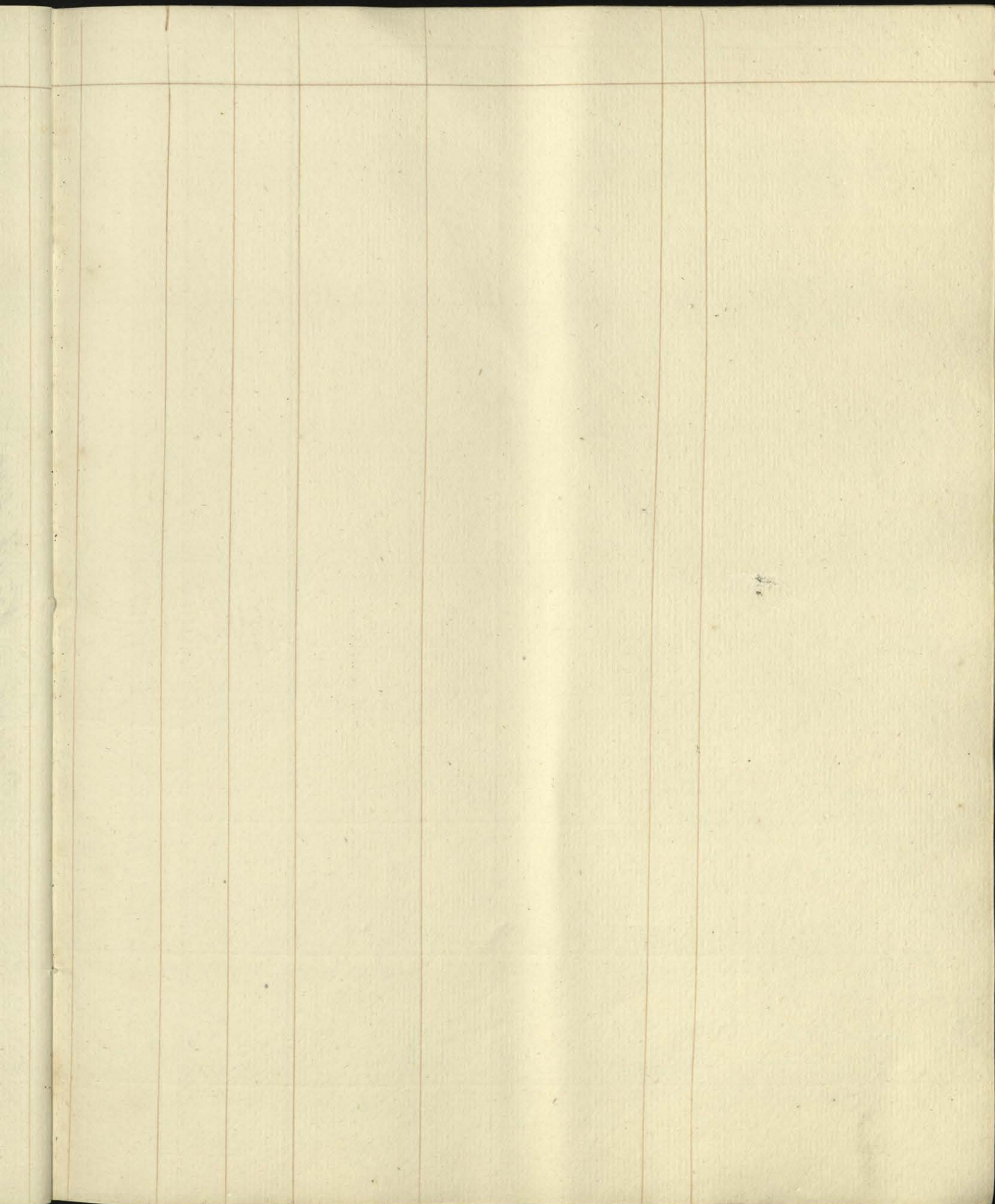
*Pictures in Warwick House*

Pictures in Warwick House

No.	Subject	Maker	Valuation subject to a percentage of 10% in L.
494	The Siege of a Town in Standards	Vandermeulen	21. ....
495	Peasants Waggon attacked by robbers	same	50. .... (had inscribed £105)
496	A View of Hampton Court Garden, with figures, Statue of a Warrior		31. 10. ....
497	Two cream coloured horses, a spotted grey horse, & a dog	Aradeviller	15. 15. ....
498	A gentleman on a cream coloured horse, with other horses & a dog	same	15. 15. ....
499	Small portrait of a gentleman on a bay horse	Vandermeulen	7. 7. ....
500	Do on a white horse	same	7. 7. ....
501	The building of Versailles	d°	26. 5. ....
502	The funeral obsequies of Charles IX.	d°	50. .... d° £84
503	Louis XIV. on a white horse, surrounded by his guards & attendants	d°	50. .... d° £84
504	same King at the door of an Inn	d°	31. 10. ....
505	same King on a white spotted horse	d°	21. ....
506	Small portrait of Louis XIV. with a battle in the background	d°	10. 10. ....
507	The Siege of a Town (supposed Learning)	d°	26. 5. ....
508	Portrait of Louis XV. on a white horse, larger than N° 506	d°	31. 10. ....
509	A City brought to the Relief of Louis XIV.	d°	21. ....
510	Portrait of a spotted grey horse & a black horse	Aradeviller	42. ....

658 14





**A number of blank pages follow  
and have not been photographed.**

**A number of blank pages follow  
and have not been photographed.**



