

Sir

Egham February 20<sup>th</sup> 1830

In consequence of a very particular Estimate that I have made, for the New Dining Room, at the Royal Lodge, and also the alteration of the Conservatory with the necessary Minor Matters, in appertaining to the same - I am willing to execute the various Items in my Trade, according to the Drawings, which I have seen, for the sum of -

One Thousand and Twenty Four Pounds

£ 1024 0 0 s. d.

I am Sir Sir  
most respectfully,  
Yr Obed Servant  
Richard Army Butler

To Sir Jeffrey Wyatville



No. 4.

Clayton

10th May 1840.





Windsor July 20<sup>th</sup> 1830

Sir

In consequence of a very particular Estimate that I have made for the new Dining Room at the Royal Lodge, and also the alteration of the Conservatory, with the necessary minor matters in appertaining to the same. I am willing to execute the various Items in my trade, according to the Drawings which I have seen, for the sum of seven hundred and seventy three Pounds.

I am Sir, most respectfully  
 Your obedient servant

To Sir Jeffrey Hyattville

W. Berridge



No. 8.

Smith and Sonmoyse  
William Burridge





34642

50 Low<sup>ry</sup> Brook St  
26<sup>th</sup> Feb<sup>r</sup> 1830

Dear Mr. William

I have enclosed the receipts  
and beg leave to say that the arrangement  
is quite satisfactory, the paper document  
of the same that will be due to each  
person shall be forwarded to you on my  
return to Windsor in a few days;

Yours very ob<sup>l</sup>ig<sup>d</sup> serv<sup>t</sup>

J. Hayter

J. W. Knighton Esq.

Esq.



26. February 1830

Sir J. Weyatville

to

Sir William Knighton

That the Plan proposed  
by Sir W<sup>m</sup> Knighton in  
regard to the issuing of  
Monies for the alterations  
carrying on at the Royal  
Lodge, is quite satisfactory



George B.

Whereas We have signified to Sir  
 Jeffery Wyatville Knight Our Royal Will and  
 Pleasure that certain Additions, Alterations, and  
 Improvements should be made, under his  
 Superintendance, and Direction, at Our Royal  
 Lodge in Windsor Great Park, according to a  
 Plan, and Estimate which he hath submitted  
 to Us, and of which We have been pleased to  
 approve; and which Estimate amounts to the  
 Sum of Eight Thousand Five hundred Pounds,  
 Now We do hereby authorise and require you  
 Our trusty and well beloved Sir William  
 Knighton Baronet, Keeper of Our Privy Purse  
 from Time to Time, upon Application made to  
 you, in Writing, by the said Sir Jeffery  
 Wyatville, to issue and pay to him out of any  
 Our Privy Purse Monies which may be in  
 your Hands, such Sums of Money, by Installments,  
 as shall amount unto, but not exceed in the  
 whole the Sum of Eight Thousand Five hundred  
 Pounds, as he may from Time to Time require

£8500

£8500

for



for the Purpose of depaying the said estimated  
Expence of the said Additions, Alterations, and  
Improvements. And Our further Will and  
Pleasure is that the Receipt of the said Sir  
Jeffery Wyatville for the Sums so issued, and  
paid by you to him, shall be a full and  
sufficient Discharge to you for the same. And  
that the said Sir Jeffery Wyatville shall alone  
remain answerable to Us, for the due and  
proper Expenditure of the said Sums so from  
Time to Time to be issued, and paid to him  
by you, out of Our Privy Purse Monies, in  
Obedience of these Our Royal Commands.  
Given at Our Palace at Windsor Castle this  
Twenty seventh Day of February in the Eleventh  
Year of Our Reign.

George R.







His Majesty's Warrant  
to Sir William Knighton  
Barth. Keeper of the Privy  
Purse, to pay to Sir  
Jeffery Wyatville Bart  
the Sum of £8,500 - by  
Instalments, to defray  
the estimated Expence of  
the intended Alterations  
and Improvements at  
the Royal Lodge, in  
Windsor Great Park -

dated 27. Feb. 1730



2<sup>d</sup> April 1830  
Sir J. Wyatville

34644

Dear Sir William

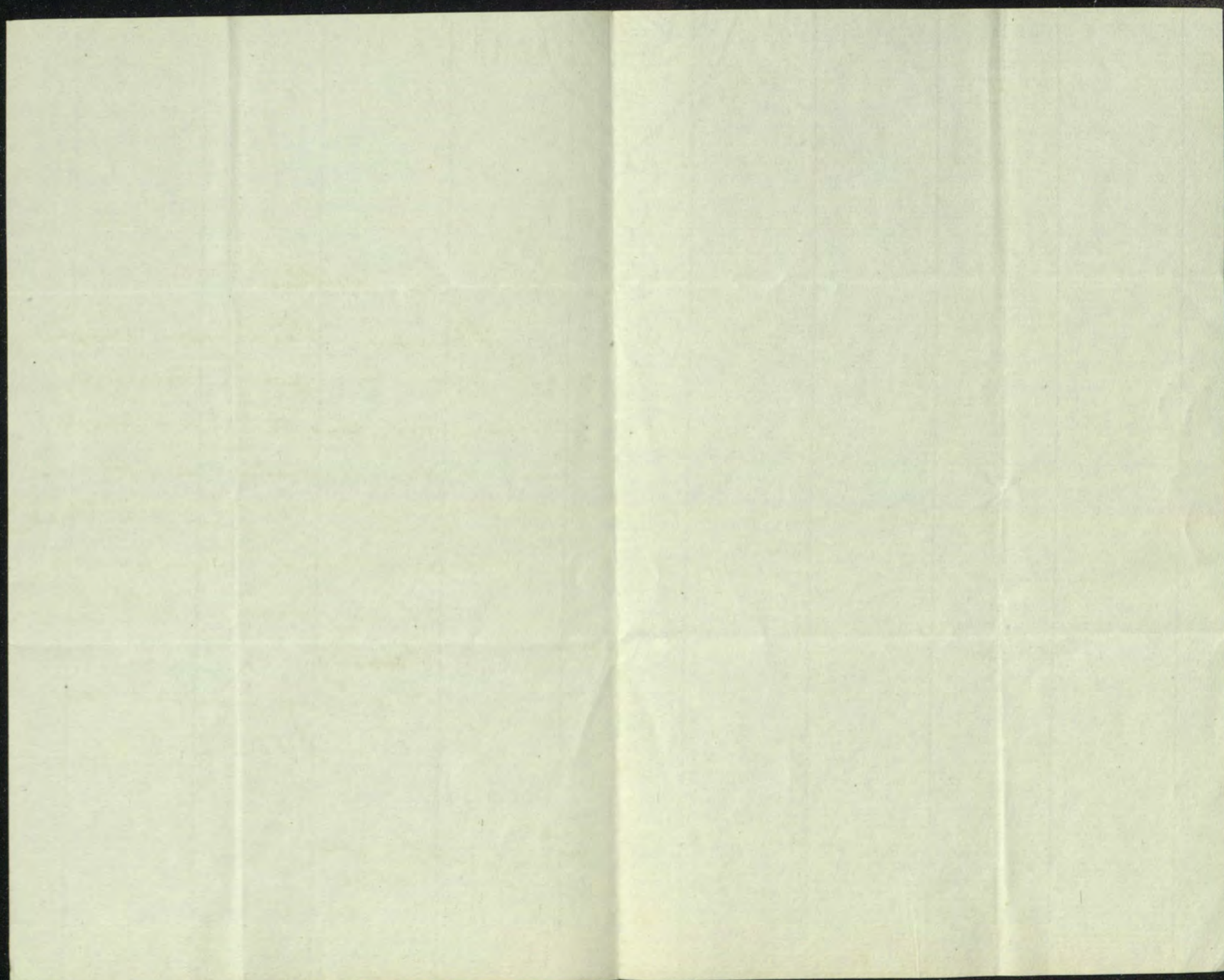
Thinking that you might  
call upon me for a receipt,  
I sincerely write to inform  
you where I shall be found.

I intend to go to Widdow  
at six o'clock tomorrow morning  
and not to return till  
next Thursday.

Y<sup>r</sup> obed<sup>t</sup> humble serv<sup>t</sup>  
J. Wyatville

Friday Apr 2<sup>nd</sup>  
1830







Sir

During the Kings residence in Windsor Great Park, the expenses incurred to complete the various ground works of His Majesty's ordering, from time to time, in the vicinity of His Royal residence, have been defrayed by grants issued by the Treasury to the Commissioners of the Office of Woods, to meet the current expenses, and so continued until May 1828, when a suspension of any further grant took place for the works.

Since then the improvements agreeably to His Majesty's own designs, at that time in an unfinished state, have been continued progressively, and will be completed in a few weeks.

The expenses caused by the works of labour to have been indispensably necessary, and I find will amount to the sum of about Fifteen hundred pounds.

Circumstanced by this consideration of the outstanding accounts at present unprovided for, I take leave to lay before you in a summary view the situation of the ground works of His Majesty's own ordering and direction, in the vicinity of the Royal Lodge, and the expenses thereby incurred, and to pray you will be pleased to direct me to the official department, the same may be submitted by me as Superintendent of the works.

I have the honour to be

Sir

Royal Gardens, New,

29 May 1830.

Your most obedient humble servant

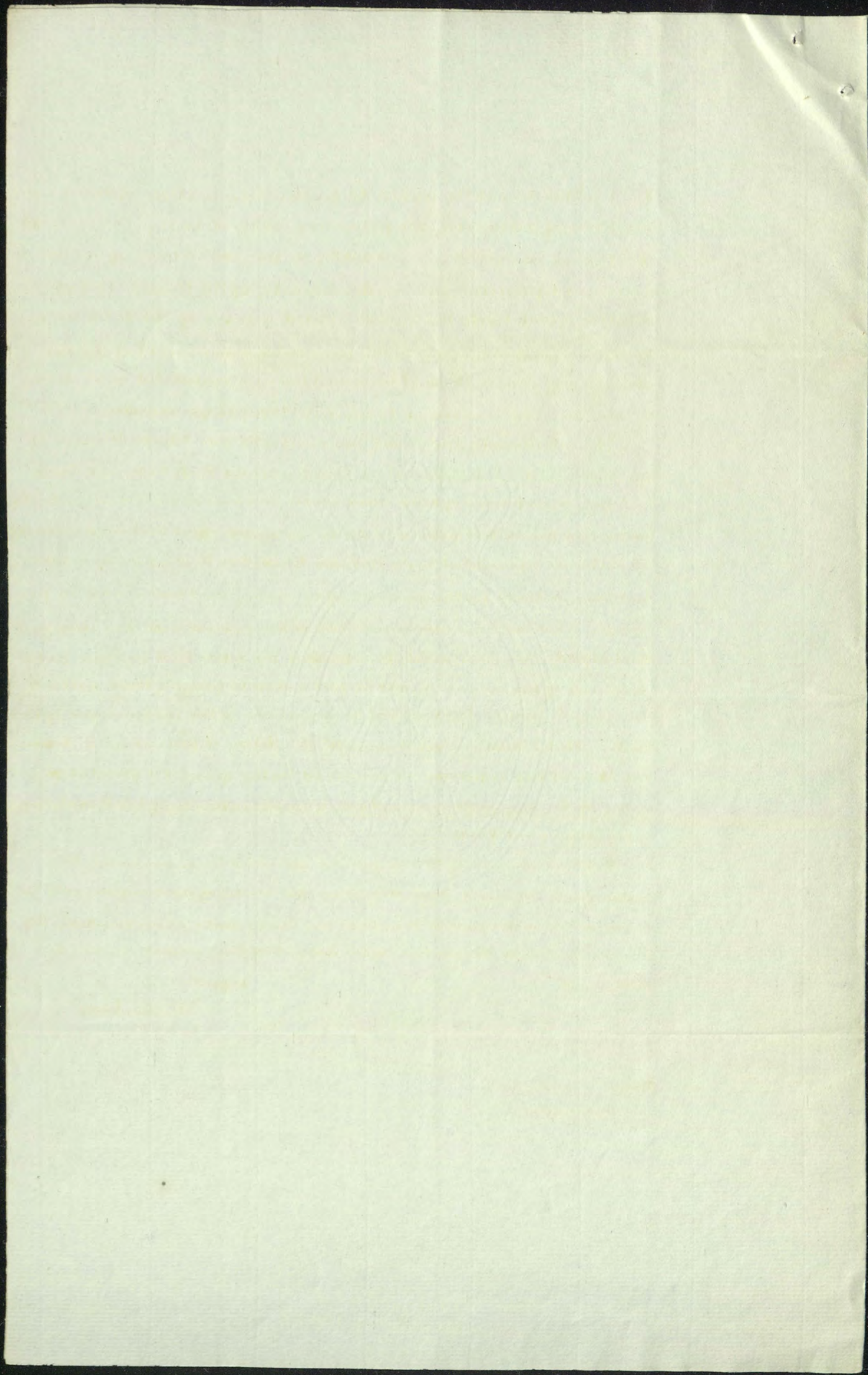
Signed W. S. Aiton.

To

Sir William Knighton, Bart.

46. 46. 46.







W. S. Atton humbly submits for the information of His Grace the Duke of Wellington the following subject being an account of expenses incurred unavoidably in the execution of ground works and plantations in the vicinity of the Royal Lodge in Windsor Great Park the accumulated areas of which having become so in consequence of the peremptory commands of His late Majesty over which W. S. Atton could have no control but in so doing he was intirely governed by his duty to his Royal Master.

His late Majesty and Lord Starcourt who was deputy Ranger of Windsor Great Park authorised Timber in the Park to be cut down to defray the expenses of these extra works and measures were accordingly taken and proceeded with in order to carry into effect the Kings commands when it was represented to Sir William Knighton that a fall of Timber had been ordered for the purpose of carrying on these works in progress. Sir William communicated on the subject with the Marquis of Hertford when his Lordship expressed the desire that further proceedings of the measure might be put a stop to fearing that cutting down old timber trees would be injurious to the picturesque of the Park. Under these circumstances W. S. Atton is placed in a dilemma to meet the expenses so incurred by the ground & plantation works of His Majesty's own ordering in the vicinity of the Royal Lodge in Windsor Great Park.

A detailed view of the expenses alluded to accompany this submission praying that His Grace the Duke of Wellington will be pleased to condescend to take into his immediate consideration the means by which the areas of the subject of this regard may be discharged.

/signed/

W. S. Atton.

Royal Gardens, Wood,  
July 1820.







W. S. Aiton's abstract account of expenses incurred for labour disbursed by him for extra ground works and plantation improvements done under his superintendance in the vicinity of the Royal Lodge in Windsor Great Park by command of His Majesty.

No. 1.

From 16. Aug to 4 July 1828.

|                                 |                    |    |               |
|---------------------------------|--------------------|----|---------------|
| Carter                          | 472 days           | 3s | £ 6-6-        |
| 31 Sabouers                     | 1296 $\frac{1}{2}$ | 4  | 129-13-       |
| Cart work &c                    |                    |    | 9-15-6        |
| Sady day 1829                   |                    |    |               |
| 4 Sabouers                      | 299                | .  | 29-18-        |
| Michs?                          |                    |    |               |
| 5 Sabouers                      | 358                | .  | 35-16-        |
| Michs                           |                    |    |               |
| 5 Sabouers                      | 335 $\frac{1}{4}$  | .  | 33-10-6       |
| Christ?                         |                    |    |               |
| 10 Sabouers                     | 721 $\frac{1}{4}$  | .  | 72-2-6        |
| Sady day 1830.                  |                    |    |               |
| 14 Sabouers                     | 1086 $\frac{3}{4}$ | .  | 108-13-6      |
| Michs?                          |                    |    |               |
| 40 Sabouers                     | 3080               | .  | 308-6-        |
|                                 |                    |    | £ 734-1-      |
| deduct<br>for produce of timber |                    |    | 123-7-610-14- |

No. 2.

This additional account of labour for extra ground works has been submitted to the Board of Green Cloth causing an exclusion of 8000l to the same amount which cannot be provided for out of the usual allowances appropriated by the Board for keeping the Royal Gardens.

|                |          |   |          |
|----------------|----------|---|----------|
| Sady day 1829. |          |   |          |
| 12 Sabouers    | 886 days | 4 | £ 88-10- |
| Michs?         |          |   |          |
| 39 Sabouers    | 3042     | . | 304-11-  |
| Michs.         |          |   |          |
| 44 Sabouers    | 3432     | . | 343-11-  |
| Christ?        |          |   |          |
| 14 Sabouers    | 1092     | . | 109-4-   |
| Sady day 1830  |          |   |          |
| 12 Sabouers    | 936      | . | 93-12-   |
|                |          |   | 938-14-  |

£ 1549-8-







Sir

Finding that the estimated sums last granted by the Treasury for the plantation works of the King's ordering to be executed in the vicinity of the Royal Lodge in Windsor Great Park have been expended upon the same while there remains outstanding labour to be completed in conformity to His Majesty's direction and which works are in a forward state of progress. I take leave in consequence to renew this subject of representation for the information of the Board that to carry on and complete the ground works directed to of this reference a further grant will be required of the estimated amount of One thousand Pounds. —

I have the honour to be, Sir,

Your obedient humble servant

/signed/

W. S. Aitow.

Royal Gardens, Kensington,  
10 December 1877.

Suspension of Grants

Do

A. Melne Esq<sup>r</sup>

H. H. H. —



unlabeled

1. Sottobobbi's handwriting

2. du h'is gence etc

Dutch of handwriting

3. abstract account of

history of certain works of his Majesty

of the

4. Copy of East of the

in the Treasury on the 17th

of the 17th



The expences incurred by the various ground and plantation works of the Kings own ordering and daily inspection in the vicinity of the Royal Lodge in Windsor great Park were in continuation defrayed by grants from His Majesty's Treasury to the Office of Woods from the year 1823 to 1828 and the works continued in progress until the demise of His late Majesty leaving at that time an unsettled account due to the amount of £1519-8-0.

A statement of this account was submitted to Sir Wm. Kingdon and by him to His grace the Duke of Wellington by whom it has been received.

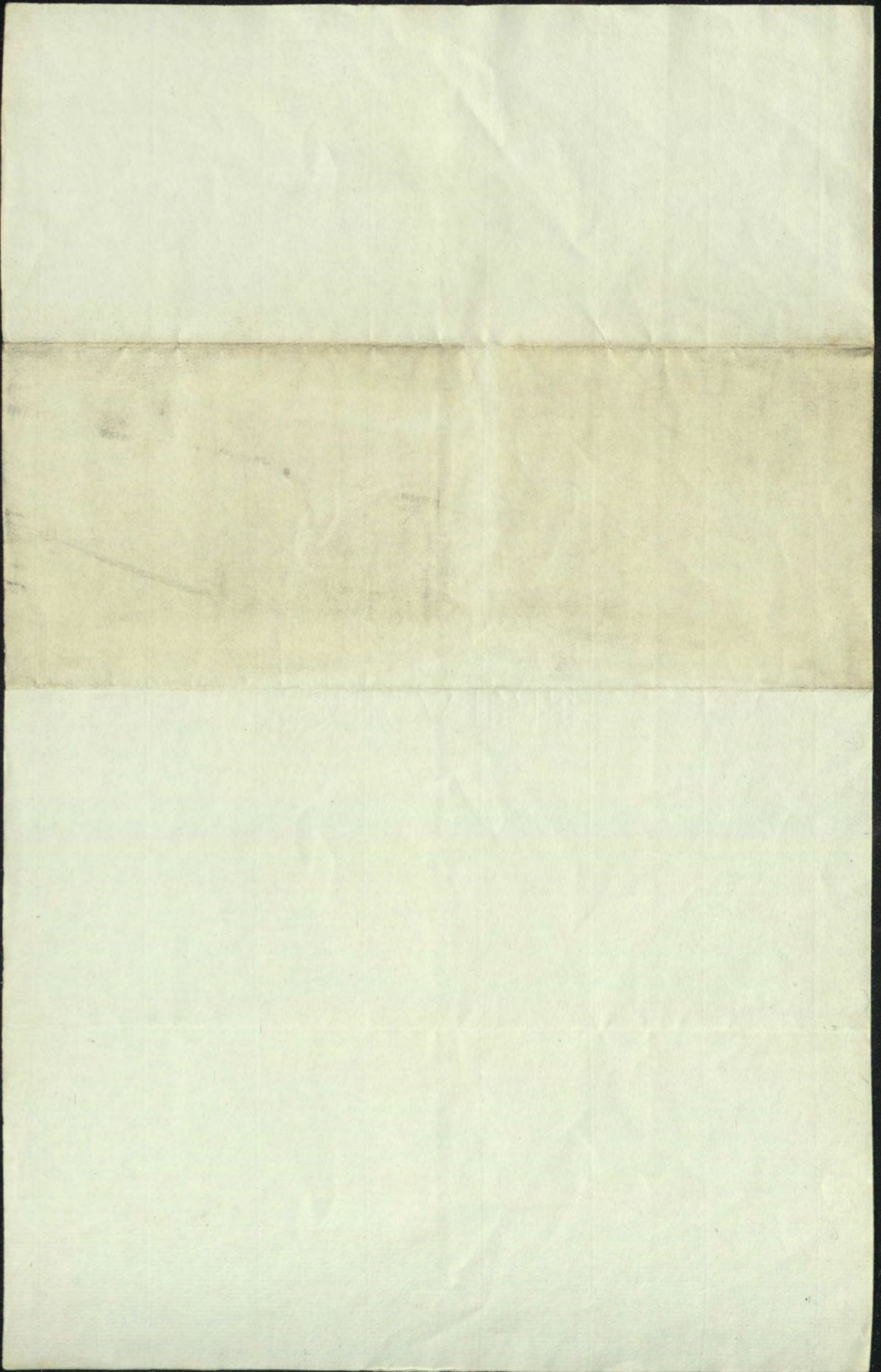
A copy of these accounts has also been delivered at the Board of Green Cloth together with the Garden bills at Midsummer 1830 but since returned as extra labour to be otherwise provided for than by that Board.

Of this labour account £610-14-0 has been disbursed by W. S. Adon and the second portion of the same in the sum of £938-11-0 has been previously advanced by the Board of Green Cloth and appropriated to defray the expence of labour and which has in consequence caused the exclusion of the regular tradesmens bills to the amount of £938-11-8 and which bills cannot be discharged until this account is received.

Brief Statement.

|   |                  |                              |                    |
|---|------------------|------------------------------|--------------------|
| Account N <sup>o</sup> 1.                   | £ s d.           | Amount due to W. S. Adon     | £ 610.14.          |
| Extra labourers wages disbursed by W. S. A. | 610.14.          |                              |                    |
| Account N <sup>o</sup> 2.                   |                  | do due for outstanding bills | 938.11.8           |
| Additional account of extra labour          | 938.11.          |                              |                    |
|   | <u>£ 1519.8.</u> |                              | <u>£ 1519.5.8.</u> |







Bills of account caused by extra ground works executed in the vicinity of the Royal  
Soddy in Windsor Great Park by His Majesty's command

## New

|                           |                       |
|---------------------------|-----------------------|
| Gardner do for mats &c    | £ 22 . . .            |
| Supp for oats &c          | 115 19 1 <sup>2</sup> |
| Petty do for coals        | 222 15 . .            |
| Robinson for garden plots | 30 . . .              |

## Botanic

|                        |           |
|------------------------|-----------|
| Gardner do for mats &c | 26 17 6   |
| Supp for coals         | 18 5 . .  |
| Petty do for do        | 38 15 . . |

## Kensington

|                           |          |
|---------------------------|----------|
| Gardner do for mats &c    | 15 . . . |
| Stannis for Improvements  | 27 15 6  |
| Supp for oats &c          | 131 16 6 |
| Petty do for coals        | 122 7 6  |
| Palmer for glass          | 70 12 1  |
| Robinson for garden plots | 5 14 . . |

## Soddy

|                          |                      |
|--------------------------|----------------------|
| Butler for glazing work  | 110 18 . .           |
| Zebball for melon frames | 19 16 4 <sup>2</sup> |

£ 938 11 6

to Aids 1830.



Rees of an hour covered by another  
ground works executed in the  
vicinity of the Regue Sarge in  
W. G. Park by St. J. J. command.

2938-11-b.

- with Honours -



Royal Lodge Windsor great Park. —

W. S. Adon's account of wages paid to labourers  
for the execution of extra ground works by com-  
mand of His Majesty. —

£1549. 8. 0.

34651-62



34651

W. J. Aitons account of wages paid to labourers employed in the execution of new ground and plantation works of His Majesty's own ordering & direction in the vicinity of the Royal Lodge in Windsor Great Park from the 16 May 1828. —

Account No. 1. / pages 11 / £ 60. 14.

Account No. 2. / pages 10 / 938. 11.

Previously to May 1828, these extra ground works of His Majesty's ordering were defrayed by grants from the Treasury through the Office of Woods. —



34652

Account No. 5610-140.

W. S. Atton's account of labourers wages disbursed  
to him for the new ground and plantation works  
done under his superintendency in the vicinity of  
the Royal Lodge in Windsor Great Park by command  
of His Majesty.

Mids<sup>r</sup> 1828.

| From 10 May to 4 June        | days | rate |   |        |
|------------------------------|------|------|---|--------|
| Grindal - Sam <sup>l</sup>   | 42   | 31   | £ | 6 6    |
| Blay - Geo <sup>e</sup>      | 13½  | 21   |   | 1 7    |
| Ball - Geo <sup>e</sup>      | 42   |      |   | 4 4    |
| Brown - Geo <sup>e</sup>     | 13½  |      |   | 1 7    |
| Bowers - Geo <sup>e</sup>    | 20¼  |      |   | 2 6    |
| Badger - Geo <sup>e</sup>    | 41¾  |      |   | 4 3 6  |
| Bradford - Geo <sup>e</sup>  | 10   |      |   | 1      |
| Bradford - Geo <sup>e</sup>  | 20¼  |      |   | 2 6    |
| Beal - Geo <sup>e</sup>      | 42   |      |   | 4 4    |
| Bingham - Geo <sup>e</sup>   | 42   |      |   | 4 4    |
| Biggs - Geo <sup>e</sup>     | 42   |      |   | 4 4    |
| Brown - Geo <sup>e</sup>     | 9¼   |      |   | 18 6   |
| Cheesman - W <sup>m</sup>    | 42   |      |   | 4 4    |
| Danby - Geo <sup>e</sup>     | 42   |      |   | 4 4    |
| Fenniman - Rob <sup>t</sup>  | 12   |      |   | 1 4    |
| Gardner - W <sup>m</sup>     | 42   |      |   | 4 4    |
| Gardner - Geo <sup>e</sup>   | 41¼  |      |   | 4 2 6  |
| Goodale - Geo <sup>e</sup>   | 42   |      |   | 4 4    |
| Grindal - Geo <sup>e</sup>   | 9¼   |      |   | 18 6   |
| Starr - W <sup>m</sup>       | 12   |      |   | 1 4    |
| Stancock - Geo <sup>e</sup>  | 42   |      |   | 4 4    |
| Hambleton - Geo <sup>e</sup> | 42   |      |   | 4 4    |
| Humphries - R <sup>t</sup>   | 18¾  |      |   | 1 17 6 |
| Jents - Geo <sup>e</sup>     | 18¾  |      |   | 1 17 6 |
| Knight - Edw <sup>d</sup>    | 42   |      |   | 4 4    |
| Monis - Geo <sup>e</sup>     | 42   |      |   | 4 4    |
| Monday - W <sup>m</sup>      | 20¼  |      |   | 2 6    |
| Noyce - Geo <sup>e</sup>     | 9¼   |      |   | 18 6   |

774

Can<sup>d</sup> found £ 83 14



34653

Mids. 1828 - cont.

Amount bro. fawd. 774 £83 14

|            |        | days   | rate |        |
|------------|--------|--------|------|--------|
| O'Brien    | Jno.   | 42     | 21   | 4 4    |
| Parsons    | Robt.  | 42     |      | 4 4    |
| Painter    | St. S. | 42     |      | 4 4    |
| Plumridge  | Jno.   | 9 1/4  |      | 18 6   |
| Ranger     | Jno.   | 12     |      | 1 4    |
| Short      | Jno.   | 42     |      | 4 4    |
| Spong      | Geo.   | 42     |      | 4 4    |
| Sharp      | Robt.  | 21 1/2 |      | 2 3 6  |
| Swidal     | Jno.   | 9 1/4  |      | 18 6   |
| Sough      | Wm.    | 20 1/2 |      | 2 1    |
| Drundle    | Robt.  | 42     |      | 4 4    |
| Waters     | Jno.   | 42     |      | 4 4    |
| Weston     | Jno.   | 42     |      | 4 4    |
| Welbelove  | Wm.    | 20 1/2 |      | 2 1    |
| Welbelove  | St. S. | 9 1/4  |      | 18 6   |
| White      | Jno.   | 42     |      | 4 4    |
| Wilson     | Benj.  | 42     |      | 4 4    |
| Sarkwaters |        |        |      | 9 15 6 |

1296 1/2 c 21

145 14 6

Carred fawd.

Amount bro. fawd.

145 14 6

Saturday 1829.

|           |        |        |    |   |      |
|-----------|--------|--------|----|---|------|
| Badger    | Jno.   | 20 1/4 | 21 | 2 | 6    |
| Bowers    | Jno.   | 6      |    |   | 12   |
| Bentham   | Robt.  | 17     |    | 1 | 14   |
| Gardner   | Jno.   | 20     |    | 2 |      |
| Goodall   | Jno.   | 6      |    |   | 12   |
| Sittle    | Wm.    | 6      |    |   | 12   |
| Painter   | St. S. | 20 1/2 |    | 2 | 1    |
| Plumridge | Jno.   | 6      |    |   | 12   |
| Parsons   | Chas.  | 6      |    |   | 12   |
| Sharp     | Robt.  | 17     |    | 1 | 14   |
| Short     | Jno.   | 6      |    |   | 12   |
| Smith     | Jno.   | 20     |    | 2 |      |
| Drundle   | Robt.  | 23     |    | 2 | 6    |
| Sough     | Wm.    | 16     |    | 1 | 12   |
| Turner    | Jno.   | 15 1/2 |    | 1 | 11   |
| Swidal    | Jno.   | 16     |    | 1 | 12   |
| Weston    | Jno.   | 19 1/2 |    | 1 | 19 6 |
| White     | Jno.   | 19     |    | 1 | 18   |
| Welbelove | Sam.   | 23     |    | 2 | 6    |
| Watts     | Jno.   | 16     |    | 1 | 12   |

299 a 21

Carred fawd.

29 18

175 12 6



34654

Amount bro<sup>d</sup> found

\$175 12 6

Mich<sup>s</sup>. 1829.

|           |      |                                |   |   |      |
|-----------|------|--------------------------------|---|---|------|
| Badger    | Jho  | 17 <sup>3</sup> / <sub>4</sub> | 2 | 1 | 15 6 |
| Bowers    | Jno  | 18                             |   | 1 | 16 . |
| Bentman   | Rd   | 18                             |   | 1 | 16 . |
| Gardner   | Jas  | 18                             |   | 1 | 16 . |
| Goodall   | Jas  | 18                             |   | 1 | 16 . |
| Sittle    | Wm   | 16 <sup>2</sup> / <sub>4</sub> |   | 1 | 13 6 |
| Painter   | H.S  | 18                             |   | 1 | 16 . |
| Pennridge | Jho  | 18                             |   | 1 | 16 . |
| Parsons   | Chas | 18                             |   | 1 | 16 . |
| Smith     | Jas  | 18                             |   | 1 | 16 . |
| Sharp     | Rd   | 18                             |   | 1 | 16 . |
| Short     | Jno  | 18                             |   | 1 | 16 . |
| Drundee   | Rd   | 18                             |   | 1 | 16 . |
| Sough     | Wm   | 18                             |   | 1 | 16 . |
| Sumner    | Jno  | 17 <sup>3</sup> / <sub>4</sub> |   | 1 | 15 6 |
| Sindal    | Jho  | 17 <sup>3</sup> / <sub>4</sub> |   | 1 | 15 6 |
| Weston    | Jno  | 18                             |   | 1 | 16 . |
| White     | Jho  | 18                             |   | 1 | 16 . |
| Welbelove | St   | 18                             |   | 1 | 16 . |
| Watts     | Jho  | 18                             |   | 1 | 16 . |

358 2 1/2

35 16 .

Can<sup>d</sup> found

\$211 8 6

Amount bro<sup>d</sup> found

\$211 8 6

Mich<sup>s</sup>. 1829.

|            |      |                                |    |    |      |
|------------|------|--------------------------------|----|----|------|
| Barret     | Jno  | 6 <sup>3</sup> / <sub>4</sub>  | 21 | \$ | 13 6 |
| Cheeseman  | Wm   | 2 <sup>3</sup> / <sub>4</sub>  |    |    | 5 6  |
| Cheeseman  | Jas  | 30                             |    | 3  | .    |
| French     | Jno  | 30                             |    | 3  | .    |
| Bentman    | Rd   | 2                              |    |    | 4 .  |
| Gill       | Jos  | 9 <sup>3</sup> / <sub>4</sub>  |    |    | 19 . |
| Goodall    | Jas  | 11 <sup>3</sup> / <sub>4</sub> |    | 1  | 3 6  |
| Hudson     | Wm   | 9 <sup>3</sup> / <sub>4</sub>  |    |    | 19 . |
| Jentis     | Jho  | 8                              |    |    | 16 . |
| Sittle     | Wm   | 4 <sup>3</sup> / <sub>4</sub>  |    |    | 18 6 |
| Painter    | Jho  | 18                             |    | 1  | 16 . |
| Pennridge  | Jho  | 10                             |    | 1  | .    |
| Parsons    | Chas | 6 <sup>3</sup> / <sub>4</sub>  |    |    | 13 . |
| Howe       | Ed   | 30                             |    | 3  | .    |
| Sharp      | Rd   | 13 <sup>3</sup> / <sub>4</sub> |    | 1  | 7 .  |
| Strong     | H.S  | 10 <sup>3</sup> / <sub>4</sub> |    | 1  | 1 .  |
| Smith      | Jas  | 15 <sup>3</sup> / <sub>4</sub> |    | 1  | 11 . |
| Temple     | Jho  | 30                             |    | 3  | .    |
| Sough      | Wm   | 5                              |    |    | 10 . |
| Sindal     | Jho  | 8                              |    |    | 16 . |
| Drundal/Sy | Rd   | 11                             |    | 1  | 2 .  |
| Drundal/Sy | Rd   | 8                              |    |    | 16 . |
| White      | Jho  | 7                              |    |    | 14 . |
| Watts      | Jho  | 10                             |    | 1  | .    |
| Wyne       | Jno  | 10                             |    | 1  | .    |
| Welbelove  | St   | 8 <sup>3</sup> / <sub>4</sub>  |    |    | 16 6 |
| Weston     | Jno  | 14 <sup>3</sup> / <sub>4</sub> |    | 1  | 11 . |

335 2 1/2

33 10 6

Can<sup>d</sup> found

\$244 19 .



6 34655

Amount bro<sup>d</sup> found

\$244 19

Christ<sup>s</sup> 1829.

|           |                 |                                |    |         |
|-----------|-----------------|--------------------------------|----|---------|
| Cheesman  | W <sup>m</sup>  | 34 <sup>1</sup> / <sub>4</sub> | 21 | \$ 3 26 |
| Edwards   | J <sup>n</sup>  | 34 <sup>1</sup> / <sub>4</sub> |    | 6 6     |
| Fentiman  | R <sup>d</sup>  | 32 <sup>1</sup> / <sub>4</sub> |    | 3 4 6   |
| Goodall   | J <sup>n</sup>  | 56 <sup>1</sup> / <sub>4</sub> |    | 5 12 6  |
| Sentis    | J <sup>n</sup>  | 51 <sup>3</sup> / <sub>4</sub> |    | 5 3 6   |
| O'Brien   | J <sup>n</sup>  | 39 <sup>1</sup> / <sub>2</sub> |    | 3 19    |
| Osborne   | J <sup>n</sup>  | 1/2                            |    | 1       |
| Parsons   | Ch <sup>r</sup> | 57 <sup>1</sup> / <sub>2</sub> |    | 3 15    |
| Plumridge | J <sup>n</sup>  | 49 <sup>3</sup> / <sub>4</sub> |    | 4 19 6  |
| Roberts   | J <sup>n</sup>  | 1/2                            |    | 1       |
| Sharp     | J <sup>n</sup>  | 51 <sup>1</sup> / <sub>2</sub> |    | 5 3     |
| Spong     | J <sup>n</sup>  | 54 <sup>3</sup> / <sub>4</sub> |    | 5 9 6   |
| Spong     | Geo             | 25                             |    | 2 10    |
| Smith     | J <sup>n</sup>  | 50 <sup>3</sup> / <sub>4</sub> |    | 5 1 6   |
| Sundal    | R <sup>d</sup>  | 38 <sup>1</sup> / <sub>2</sub> |    | 3 17    |
| Sundal    | J <sup>n</sup>  | 40 <sup>3</sup> / <sub>4</sub> |    | 4 1 6   |
| White     | J <sup>n</sup>  | 34 <sup>1</sup> / <sub>4</sub> |    | 3 8 6   |
| Welbelove | St <sup>r</sup> | 49 <sup>1</sup> / <sub>2</sub> |    | 4 19    |
| Wolton    | J <sup>n</sup>  | 52 <sup>3</sup> / <sub>4</sub> |    | 5 5 6   |
| Wilson    | J <sup>n</sup>  | 1/2                            |    | 1       |
| Walters   | J <sup>n</sup>  | 1/2                            |    | 1       |

72 26

721<sup>1</sup>/<sub>4</sub>

Car<sup>d</sup> found

\$317 16

7

Amount bro<sup>d</sup> found

\$317 16

Saturday 1830.

|          |                |                                |    |         |
|----------|----------------|--------------------------------|----|---------|
| Beal     | J <sup>n</sup> | 12                             | 24 | \$ 1 41 |
| Bryant   | J <sup>n</sup> | 23                             |    | 2 6     |
| Baker    | J <sup>n</sup> | 18                             |    | 1 16    |
| Bingham  | J <sup>n</sup> | 78                             |    | 7 16    |
| Cheesman | W <sup>m</sup> | 12 <sup>1</sup> / <sub>2</sub> |    | 4 5     |
| Edwards  | J <sup>n</sup> | 46                             |    | 4 12    |
| Fentiman | R <sup>d</sup> | 30                             |    | 3       |
| Franklyn | J <sup>n</sup> | 18                             |    | 1 16    |
| Goodall  | J <sup>n</sup> | 6                              |    | 12      |
| Gill     | J <sup>n</sup> | 12                             |    | 1 4     |
| Henry    | J <sup>n</sup> | 18                             |    | 1 16    |
| Sentis   | J <sup>n</sup> | 30 <sup>1</sup> / <sub>2</sub> |    | 3 1     |
| King     | J <sup>n</sup> | 5                              |    | 10      |
| Syford   | R <sup>d</sup> | 24                             |    | 2 8     |
| Sittle   | W <sup>m</sup> | 18                             |    | 1 16    |
| Morris   | J <sup>n</sup> | 78                             |    | 7 16    |
| O'Brien  | J <sup>n</sup> | 57 <sup>1</sup> / <sub>4</sub> |    | 5 3 6   |

570<sup>3</sup>/<sub>4</sub>

Car<sup>d</sup> found

\$51 16 317 16



8  
34656

Amounts bro<sup>d</sup>. forw<sup>d</sup>.

£ 51 1 6 317 1 6

Saturday 1830 cont<sup>d</sup>.

|                          |                 | 670 <sup>3</sup> / <sub>4</sub> |   |           |
|--------------------------|-----------------|---------------------------------|---|-----------|
| Parsons                  | Ch <sup>s</sup> | 30                              | 4 | £ 3 . . . |
| Pennridge                | J <sup>h</sup>  | 54                              |   | 5 8 .     |
| Painter                  | H <sup>y</sup>  | 5                               |   | 10 .      |
| Smith                    | J <sup>o</sup>  | 54                              |   | 5 8 .     |
| Shay                     | R <sup>t</sup>  | 37                              |   | 3 14 .    |
| Spong                    | H <sup>y</sup>  | 6                               |   | 12 .      |
| Spong                    | Q <sup>d</sup>  | 6                               |   | 12 .      |
| Drundal / J <sup>r</sup> | R <sup>d</sup>  | 78                              |   | 7 16 .    |
| Drundal / J <sup>r</sup> | R <sup>d</sup>  | 14                              |   | 1 8 .     |
| Drundal                  | J <sup>h</sup>  | 54 <sup>1</sup> / <sub>2</sub>  |   | 5 9 .     |
| Dough                    | W <sup>m</sup>  | 18                              |   | 1 16 .    |
| White                    | J <sup>h</sup>  | 12                              |   | 1 4 .     |
| Welbelove                | J <sup>t</sup>  | 53 <sup>1</sup> / <sub>2</sub>  |   | 5 7 .     |
| Weston                   | J <sup>h</sup>  | 78                              |   | 7 16 .    |
| Waters                   | J <sup>h</sup>  | 19 <sup>1</sup> / <sub>2</sub>  |   | 1 19 .    |
| Overtime                 |                 | 56 <sup>1</sup> / <sub>2</sub>  |   | 5 13 .    |

1086 <sup>3</sup>/<sub>4</sub>

108136

Can<sup>d</sup>. forw<sup>d</sup>.

£ 425 15 .

9

Amount bro<sup>d</sup>. forw<sup>d</sup>.

£ 425 15 .

Mids<sup>s</sup>. 1830.

|          |                |                                |    |          |
|----------|----------------|--------------------------------|----|----------|
| Atkins   | J <sup>h</sup> | 5                              | 21 | £ . 10 . |
| Baal     | J <sup>h</sup> | 78                             |    | 7 16 .   |
| Badger   | J <sup>h</sup> | 78                             |    | 7 16 .   |
| Baker    | J <sup>h</sup> | 78                             |    | 7 16 .   |
| Bryant   | J <sup>o</sup> | 58 <sup>1</sup> / <sub>4</sub> |    | 5 16 6   |
| Burgham  | J <sup>h</sup> | 78                             |    | 7 16 .   |
| Cheesman | W <sup>m</sup> | 78                             |    | 7 16 .   |
| Coch     | J <sup>h</sup> | 22                             |    | 2 4 .    |
| Danby    | J <sup>h</sup> | 78                             |    | 7 16 .   |
| Douglass | Q <sup>d</sup> | 53                             |    | 5 6 .    |
| Edwards  | J <sup>h</sup> | 63                             |    | 6 6 .    |
| Fentiman | R <sup>t</sup> | 61 <sup>1</sup> / <sub>4</sub> |    | 6 2 6    |
| Franklyn | H <sup>y</sup> | 55 <sup>1</sup> / <sub>2</sub> |    | 5 11 .   |
| Fry      | J <sup>h</sup> | 45                             |    | 4 10 .   |
| Gill     | J <sup>o</sup> | 45                             |    | 4 10 .   |
| Goodall  | J <sup>h</sup> | 33 <sup>1</sup> / <sub>4</sub> |    | 3 7 6    |

909 <sup>3</sup>/<sub>4</sub>

Can<sup>d</sup>. forw<sup>d</sup>.

£ 40 19 6 425 15 .



Amount bro<sup>d</sup>. found £90 19 6 425 15 .

Mids. 1830, cont<sup>d</sup>

|           |     | 909 <sup>3</sup> / <sub>4</sub> | date | rate |        |
|-----------|-----|---------------------------------|------|------|--------|
| George    | Wm  | 78                              | 21   |      | 1 6    |
| Henwood   | Jno | 11 <sup>1</sup> / <sub>2</sub>  |      |      | 1 2 6  |
| Stanley   | Jno | 78                              |      |      | 7 16   |
| Hurley    | Jno | 78                              |      |      | 7 16   |
| Senko     | Jno | 57 <sup>1</sup> / <sub>2</sub>  |      |      | 5 8    |
| Jennings  | Jno | 66 <sup>1</sup> / <sub>4</sub>  |      |      | 6 12 6 |
| King      | Jno | 75                              |      |      | 7 10   |
| Syford    | Rd  | 58                              |      |      | 5 16   |
| Sille     | Wm  | 55 <sup>1</sup> / <sub>2</sub>  |      |      | 5 11   |
| Morris    | Jno | 78                              |      |      | 7 16   |
| O'Brien   | Jno | 59 <sup>1</sup> / <sub>2</sub>  |      |      | 5 19   |
| O'Brien   | Jno | 52                              |      |      | 5 4    |
| Pennridge | Jno | 64                              |      |      | 6 8    |
| Parsons   | Ch  | 57 <sup>1</sup> / <sub>2</sub>  |      |      | 5 15   |
| Mandal    | Wm  | 12                              |      |      | 1 4    |
| Roberts   | Jno | 78                              |      |      | 7 16   |

1787<sup>1</sup>/<sub>2</sub>

can<sup>d</sup> found £178 15 . 425 15 .

Amount bro<sup>d</sup>. found £178 15 . 425 15 .

Mids. 1830, cont<sup>d</sup>

|           |     | 1787 <sup>1</sup> / <sub>2</sub> | date | rate |       |
|-----------|-----|----------------------------------|------|------|-------|
| Roberts   | Edw | 78                               | 21   |      | 7 16  |
| Spong     | Jno | 45                               |      |      | 4 10  |
| Sleed     | Jno | 76                               |      |      | 7 12  |
| Sharp     | Rd  | 64                               |      |      | 6 8   |
| Smith     | Jno | 64                               |      |      | 6 8   |
| Sundal    | Jno | 78                               |      |      | 7 16  |
| Sundal    | Jno | 42 <sup>1</sup> / <sub>4</sub>   |      |      | 4 4 6 |
| Sundal    | Jno | 78                               |      |      | 7 16  |
| Sundal    | Jno | 63 <sup>1</sup> / <sub>2</sub>   |      |      | 6 7   |
| Tough     | Wm  | 52 <sup>1</sup> / <sub>4</sub>   |      |      | 5 5 6 |
| Waters    | Jno | 78                               |      |      | 7 16  |
| White     | Jno | 52 <sup>1</sup> / <sub>4</sub>   |      |      | 5 8   |
| Wierow    | Jno | 78                               |      |      | 7 16  |
| Weston    | Jno | 78                               |      |      | 7 16  |
| Wolbelove | Jno | 59 <sup>1</sup> / <sub>2</sub>   |      |      | 5 19  |
| Overtime  |     | 306 <sup>1</sup> / <sub>2</sub>  |      |      | 30 13 |

3083 24

308 6

£178 15 .

deduct amount received for Timber 523 7

£650 14 .



Account No 2 £938-14-0.

Additional account of labourers wages for  
 esplan ground works and plantation improve-  
 -ments ordered by His Majesty in the vicinity  
 of the Royal Lodge in Windsor Great Park.

Ladyday 1829.

|          |    | days             | rate |        |
|----------|----|------------------|------|--------|
| Biggs    | 3s | 63               | 7    | £ 6 6  |
| Bingham  | 3s | 63               |      | 6 6    |
| Béal     | 3s | 78               |      | 7 16   |
| Danby    | 3s | 73 $\frac{3}{4}$ |      | 7 17 6 |
| Edwards  | 3s | 54               |      | 5 8    |
| Gardner  | 3s | 6                |      | 12     |
| Jenks    | 3s | 28               |      | 2 16   |
| Morris   | 3s | 78               |      | 7 16   |
| O'Brien  | 3s | 60               |      | 6      |
| O'Brien  | 3s | 4                |      | 8      |
| Osborne  | 3s | 6 $\frac{3}{4}$  |      | 13 6   |
| Parsons  | 3s | 60               |      | 6      |
| Pointer  | 3s | 6                |      | 12     |
| Spong    | 3s | 30 $\frac{1}{2}$ |      | 3 1    |
| Short    | 3s | 18 $\frac{3}{4}$ |      | 1 17 6 |
| Strudal  | 3s | 58 $\frac{1}{2}$ |      | 5 17   |
| Strudal  | 3s | 6                |      | 12     |
| Strudal  | 3s | 78               |      | 7 16   |
| Weston   | 3s | 58 $\frac{1}{4}$ |      | 5 16 6 |
| Walters  | 3s | 48 $\frac{1}{2}$ |      | 4 17   |
| Overtime |    | 6                |      | 12     |
|          |    |                  |      | 88 10  |

£85 27

Can't find it



34659

Amount bro<sup>d</sup> found

£ 88 10 .

Mids. 1829,

|           |                 | days                           | rate |          |
|-----------|-----------------|--------------------------------|------|----------|
| Bingham   | J <sup>rs</sup> | 78                             | 21   | £ 7 16 . |
| Reed      | J <sup>rs</sup> | 78                             |      | 7 16 .   |
| Biggs     | J <sup>rs</sup> | 70                             |      | 7 . .    |
| Walker    | J <sup>rs</sup> | 78                             |      | 7 16 .   |
| Badger    | J <sup>rs</sup> | 71                             |      | 7 2 .    |
| Warret    | J <sup>rs</sup> | 19 <sup>3</sup> / <sub>4</sub> |      | 1 19 6   |
| Cheesman  | W <sup>m</sup>  | 25 <sup>3</sup> / <sub>4</sub> |      | 2 10 6   |
| Cheesman  | J <sup>rs</sup> | 2                              |      | . 4 .    |
| Darby     | J <sup>rs</sup> | 78                             |      | 7 16 .   |
| Davis     | J <sup>rs</sup> | 2                              |      | . 4 .    |
| Edwards   | J <sup>rs</sup> | 78                             |      | 7 16 .   |
| Venturian | J <sup>rs</sup> | 55 <sup>3</sup> / <sub>4</sub> |      | 5 11 6   |
| Gardner   | J <sup>rs</sup> | 61 <sup>3</sup> / <sub>4</sub> |      | 6 2 6    |
| Gardner   | W <sup>m</sup>  | 31                             |      | 3 2 .    |
| Goodall   | J <sup>rs</sup> | 58 <sup>3</sup> / <sub>4</sub> |      | 5 16 6   |
| Gill      | J <sup>rs</sup> | 41 <sup>3</sup> / <sub>4</sub> |      | 4 9 6    |
| Hine      | J <sup>rs</sup> | 2                              |      | . 4 .    |
| Storow    | J <sup>rs</sup> | 38 <sup>3</sup> / <sub>4</sub> |      | 3 6 6    |
| Hubert    | J <sup>rs</sup> | 19                             |      | 1 18 .   |
| Hudson    | W <sup>m</sup>  | 14 <sup>3</sup> / <sub>4</sub> |      | 1 9 6    |

930

can<sup>d</sup> found

£ 93 . . 88 10 .

Amount bro<sup>d</sup> found

£ 93 . £ 88 10 .

Mids. 1829, cont<sup>d</sup>

|           |                 | days                           | rate |        |
|-----------|-----------------|--------------------------------|------|--------|
| Humphrey  | J <sup>rs</sup> | 21                             | 21   | 2 8 .  |
| Henwood   | J <sup>rs</sup> | 5 <sup>3</sup> / <sub>4</sub>  |      | . 11 6 |
| Harley    | J <sup>rs</sup> | 78                             |      | 7 16 . |
| Ventis    | J <sup>rs</sup> | 36 <sup>3</sup> / <sub>4</sub> |      | 3 12 6 |
| Sille     | W <sup>m</sup>  | 46 <sup>3</sup> / <sub>4</sub> |      | 4 13 6 |
| Morris    | J <sup>rs</sup> | 78                             |      | 7 16 . |
| O'Brien   | J <sup>rs</sup> | 76                             |      | 7 12 . |
| O'Brien   | J <sup>rs</sup> | 53 <sup>3</sup> / <sub>4</sub> |      | 5 7 .  |
| Osborne   | J <sup>rs</sup> | 78                             |      | 7 16 . |
| Parsons   | J <sup>rs</sup> | 78                             |      | 7 16 . |
| Pouster   | J <sup>rs</sup> | 48                             |      | 4 16 . |
| Plumridge | J <sup>rs</sup> | 53                             |      | 5 6 .  |
| Perriman  | J <sup>rs</sup> | 19                             |      | 1 18 . |
| Parsons   | J <sup>rs</sup> | 30 <sup>3</sup> / <sub>4</sub> |      | 3 1 .  |
| Roberts   | J <sup>rs</sup> | 55 <sup>3</sup> / <sub>4</sub> |      | 5 11 6 |
| Spong     | J <sup>rs</sup> | 78                             |      | 7 16 . |
| Sharp     | J <sup>rs</sup> | 61                             |      | 6 8 .  |
| Shat      | J <sup>rs</sup> | 41                             |      | 4 2 .  |
| Smith     | J <sup>rs</sup> | 45 <sup>3</sup> / <sub>4</sub> |      | 4 11 6 |
| Smith     | J <sup>rs</sup> | 55                             |      | 5 10 . |

1974<sup>3</sup>/<sub>4</sub>

can<sup>d</sup> found

£ 197 8 6 88 10 .



Amount bro<sup>d</sup>. found<sup>d</sup> \$197 8 6 88 10

Mich<sup>d</sup> 1829, cont<sup>d</sup>

|                           |                  | 197 <sup>1/2</sup><br>date | rate |          |
|---------------------------|------------------|----------------------------|------|----------|
| Strong                    | 4 <sup>1/2</sup> | 47                         | 21   | \$ 4 4 . |
| Strundal / S <sup>r</sup> | S <sup>r</sup>   | 78                         |      | 7 16 .   |
| Strundal / S <sup>r</sup> | R <sup>d</sup>   | 46 <sup>1/2</sup>          |      | 4 13 .   |
| Strindal                  | S <sup>e</sup>   | 78                         |      | 7 16 .   |
| Strindal                  | S <sup>e</sup>   | 64 <sup>1/2</sup>          |      | 6 8 6    |
| Sumner                    | S <sup>d</sup>   | 23 <sup>1/2</sup>          |      | 2 7 .    |
| Sough                     | W <sup>m</sup>   | 41 <sup>1/2</sup>          |      | 4 3 .    |
| Sample                    | S <sup>e</sup>   | 6                          |      | . 12 .   |
| Walters                   | S <sup>e</sup>   | 78                         |      | 7 16 .   |
| Waston                    | S <sup>e</sup>   | 78                         |      | 7 16 .   |
| White                     | S <sup>e</sup>   | 63 <sup>1/2</sup>          |      | 6 7 .    |
| Wielbeoue                 | S <sup>e</sup>   | 58 <sup>1/2</sup>          |      | 5 17 .   |
| West                      | S <sup>e</sup>   | 24                         |      | 2 8 .    |
| Watts                     | S <sup>e</sup>   | 41 <sup>1/2</sup>          |      | 4 8 6    |
| Watts                     | W <sup>m</sup>   | 2                          |      | . 4 .    |
| Wymie                     | S <sup>e</sup>   | 41 <sup>1/2</sup>          |      | 4 8 6    |
| Wallace                   | R <sup>d</sup>   | 2                          |      | . 4 .    |
| Wierow                    | S <sup>e</sup>   | 25 <sup>1/2</sup>          |      | 2 10 6   |
| Overline                  |                  | 268 <sup>1/2</sup>         |      | 26 16 6  |
|                           |                  |                            |      | 304 14 . |

304 22 1/2

can<sup>d</sup>. found<sup>d</sup> \$392 14 .

Amount bro<sup>d</sup>. found<sup>d</sup> \$392 14 .

Mich<sup>d</sup> 1829.

|          |                | date              | rate |           |
|----------|----------------|-------------------|------|-----------|
| Bingham  | S <sup>e</sup> | 78                | 21   | \$ 7 16 . |
| Beal     | S <sup>e</sup> | 78                |      | 7 16 .    |
| Badger   | S <sup>e</sup> | 78                |      | 7 16 .    |
| Baker    | S <sup>e</sup> | 78                |      | 7 16 .    |
| Barrett  | S <sup>e</sup> | 58 <sup>1/2</sup> |      | 5 17 6    |
| Cheesman | W <sup>m</sup> | 47 <sup>1/2</sup> |      | 7 15 .    |
| Dairy    | S <sup>e</sup> | 78                |      | 7 16 .    |
| Edwards  | S <sup>e</sup> | 78                |      | 7 16 .    |
| Foulman  | R <sup>d</sup> | 47                |      | 7 11 .    |
| Gardner  | W <sup>m</sup> | 78                |      | 7 16 .    |
| Gill     | S <sup>e</sup> | 57 <sup>1/2</sup> |      | 5 14 6    |
| Goodall  | S <sup>e</sup> | 66 <sup>1/2</sup> |      | 6 12 6    |
| Harley   | S <sup>e</sup> | 78                |      | 7 16 .    |
| Horton   | S <sup>e</sup> | 78                |      | 7 16 .    |
| Studson  | W <sup>m</sup> | 55 <sup>1/2</sup> |      | 5 11 .    |
| Jenkins  | S <sup>e</sup> | 70                |      | 7 . .     |
| Sulle    | W <sup>m</sup> | 54 <sup>1/2</sup> |      | 5 9 .     |
| Morris   | S <sup>e</sup> | 78                |      | 7 16 .    |
| Olson    | S <sup>e</sup> | 52 <sup>1/2</sup> |      | 5 5 6     |
| Olson    | S <sup>e</sup> | 78                |      | 7 16 .    |
| Osborne  | S <sup>e</sup> | 78                |      | 7 16 .    |
| Pointer  | S <sup>e</sup> | 78                |      | 7 16 .    |

1583<sup>1/2</sup>

can<sup>d</sup>. found<sup>d</sup> \$158 7 . 392 14 .



34661

Amount bro<sup>d</sup>. for<sup>d</sup>.

£158 7 . 392 11 1/2

Mich<sup>d</sup> 1829, cont<sup>d</sup>.

1583 1/2 0

|                 | name            | rate   |        |
|-----------------|-----------------|--------|--------|
| Pullen          | Jno             | 16 3/4 | 1 13 6 |
| Parsons         | Rd              | 78     | 7 16 . |
| Parsons         | Ch <sup>d</sup> | 71     | 7 2 .  |
| Peunridge       | Jno             | 68 3/4 | 6 17 6 |
| Roberts         | Jno             | 78     | 7 16 . |
| Spong           | Jy              | 67 1/2 | 6 15 6 |
| Spong           | Geo             | 78     | 7 16 . |
| Sharp           | Rd              | 60 1/2 | 6 7 .  |
| Smith           | Jno             | 62 3/4 | 6 5 6  |
| Smith           | W <sup>d</sup>  | 78     | 7 16 . |
| Sundal / S / Rd |                 | 78     | 7 16 . |
| Sundal / J / Rd |                 | 65 1/2 | 6 17 . |
| Tough           | W <sup>d</sup>  | 60     | 6 . .  |
| Sundal          | Jno             | 78     | 7 16 . |
| Sundal          | Jno             | 64 1/2 | 6 9 .  |
| Mason           | Jno             | 78     | 7 16 . |
| Weston          | Jno             | 78     | 7 16 . |
| Webelove        | Jno             | 70     | 7 . .  |
| Wyrne           | Jno             | 60 3/4 | 6 1 6  |
| Wath            | Jno             | 46     | 4 12 . |
| White           | Jno             | 74 1/2 | 7 9 .  |
| Walters         | Jno             | 78     | 7 16 . |
| Overtime        |                 | 35 3/4 | 35 3 6 |

3432 2/4 -

3484 .

Can<sup>d</sup> for<sup>d</sup>

£735 18 .

Amount bro<sup>d</sup>. for<sup>d</sup>.

£735 18 .

Christ<sup>m</sup> 1829.

name rate

|           | name            | rate    |         |
|-----------|-----------------|---------|---------|
| Bingham   | Jno             | 78      | 7 16 .  |
| Bocal     | Jno             | 78      | 7 16 .  |
| Budger    | Jy              | 78      | 7 16 .  |
| Baker     | Jno             | 78      | 7 16 .  |
| Chesman   | W <sup>d</sup>  | 13      | 1 6 .   |
| Dunby     | Jno             | 78      | 7 16 .  |
| Fountain  | Rd              | 21      | 2 2 .   |
| Fardner   | W <sup>d</sup>  | 18      | 1 16 .  |
| Goodall   | Jno             | 11 1/4  | 1 8 6   |
| Hudley    | Jno             | 78      | 7 16 .  |
| Stator    | Jno             | 74 1/4  | 7 8 6   |
| Wentis    | Jno             | 21      | 2 2 .   |
| Morris    | Jno             | 78      | 7 16 .  |
| Ordon     | Jno             | 6       | 12 .    |
| Painter   | Jy              | 6       | 12 .    |
| Peunridge | Jno             | 15 3/4  | 1 17 6  |
| Parsons   | Ch <sup>d</sup> | 5 1/4   | 10 6    |
| Spong     | Geo             | 37 1/4  | 3 14 6  |
| Spong     | Jy              | 17      | 1 14 .  |
| Sharp     | Rd              | 17 1/4  | 1 14 6  |
| Smith     | W <sup>d</sup>  | 6       | 12 .    |
| Smith     | Jno             | 17 3/4  | 1 15 6  |
| Sundal    | Rd              | 29 3/4  | 2 19 6  |
| Sundal    | Jno             | 6       | 12 .    |
| Webelove  | Jno             | 16 3/4  | 1 13 6  |
| Weston    | Jy              | 17      | 1 14 .  |
| White     | Jno             | 16      | 1 12 .  |
| Overtime  |                 | 167 3/4 | 16 15 6 |

1092 2/4 -

Can<sup>d</sup> for<sup>d</sup>

£845 2 .



Amount bro<sup>d</sup>. found.

£ 845 2.

Saturday 1830.

|          |    | days             | rate |         |
|----------|----|------------------|------|---------|
| Budger   | £0 | 78               | 4    | 7 16.   |
| Beal     | £0 | 78               | .    | 7 16.   |
| Baker    | £0 | 78               | .    | 7 16.   |
| Cheesman | £0 | 18               | .    | 1 16.   |
| Danby    | £0 | 78               | .    | 7 16.   |
| Edwards  | £0 | 39               | .    | 3 18.   |
| Sturley  | £0 | 78               | .    | 7 16.   |
| O'Brien  | £0 | 55 $\frac{3}{4}$ | .    | 5 11 6. |
| O'Brien  | £0 | 25               | .    | 2 10.   |
| Parsons  | £0 | 12 $\frac{1}{2}$ | .    | 1 5.    |
| Roberts  | £0 | 78               | .    | 7 16.   |
| Smidde   | £0 | 78               | .    | 7 16.   |
| White    | £0 | 11               | .    | 1 2.    |
| Weston   | £0 | 7 $\frac{1}{2}$  | .    | . 15.   |
| Wilson   | £0 | 78               | .    | 7 16.   |
| Walters  | £0 | 12               | .    | 1 4.    |
| Overtime |    | 10 $\frac{1}{2}$ |      | 10 26   |

93 12.

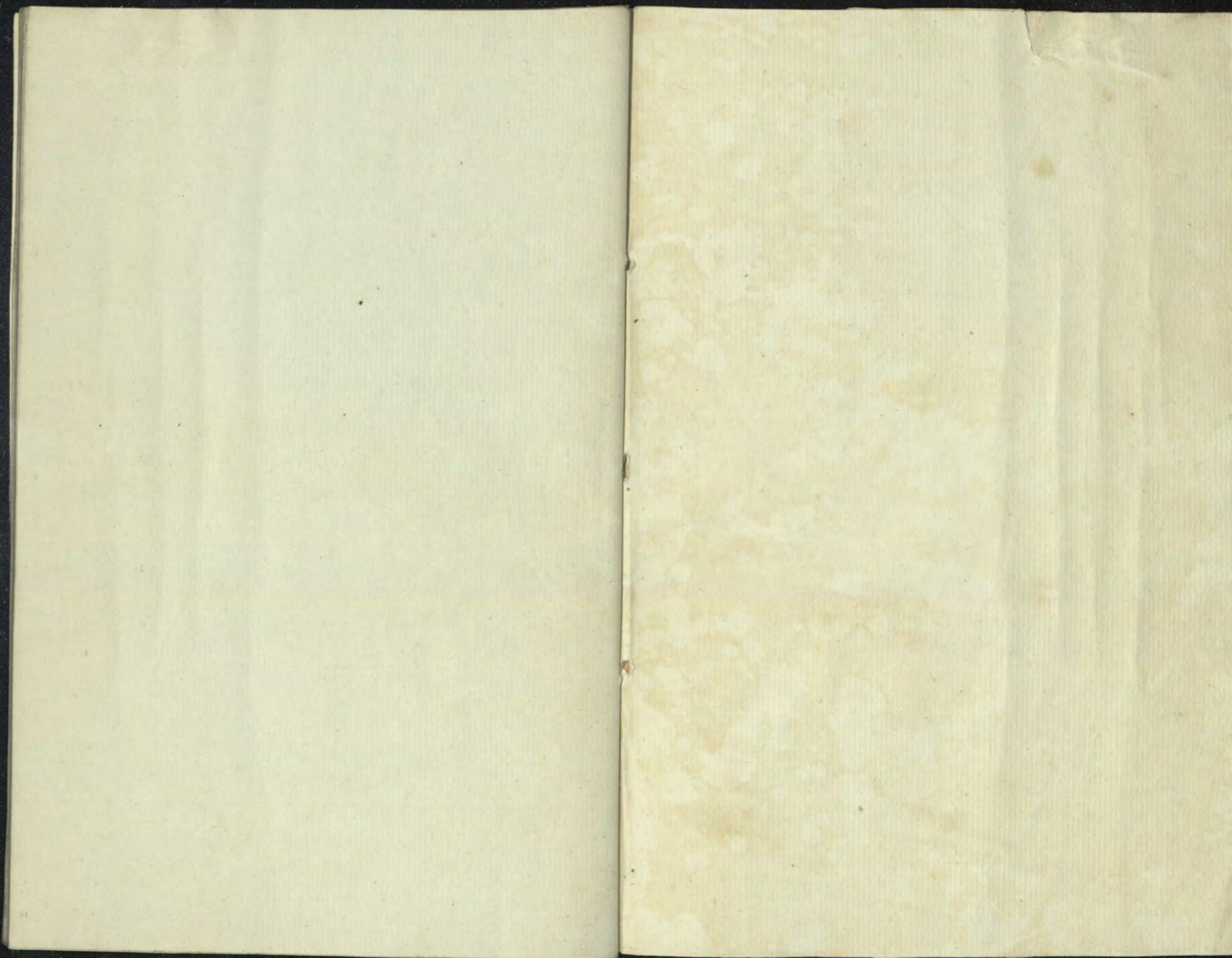
936 2 1/2.

£ 938 14.

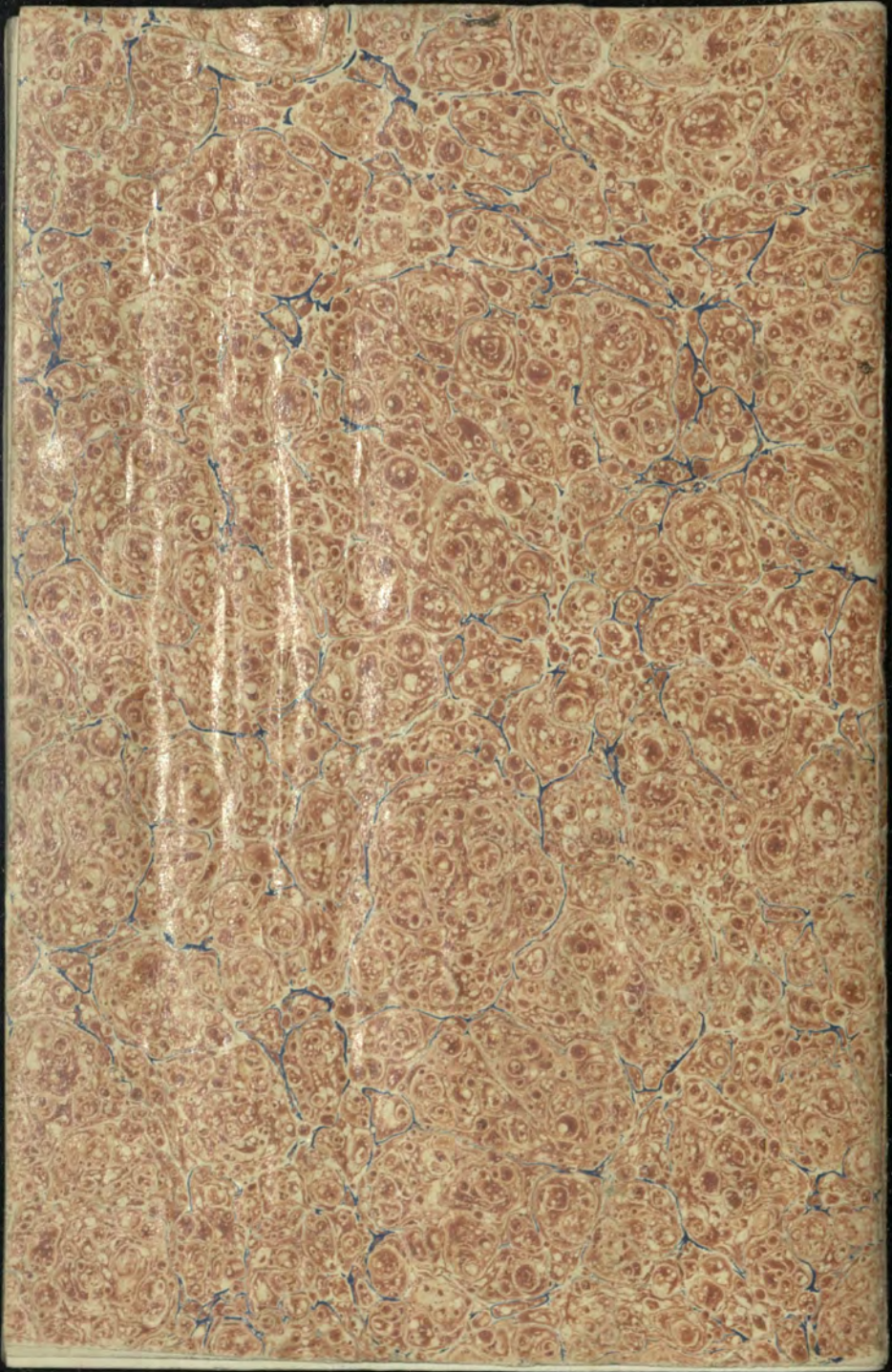


A number of blank pages follow  
and have not been photographed.







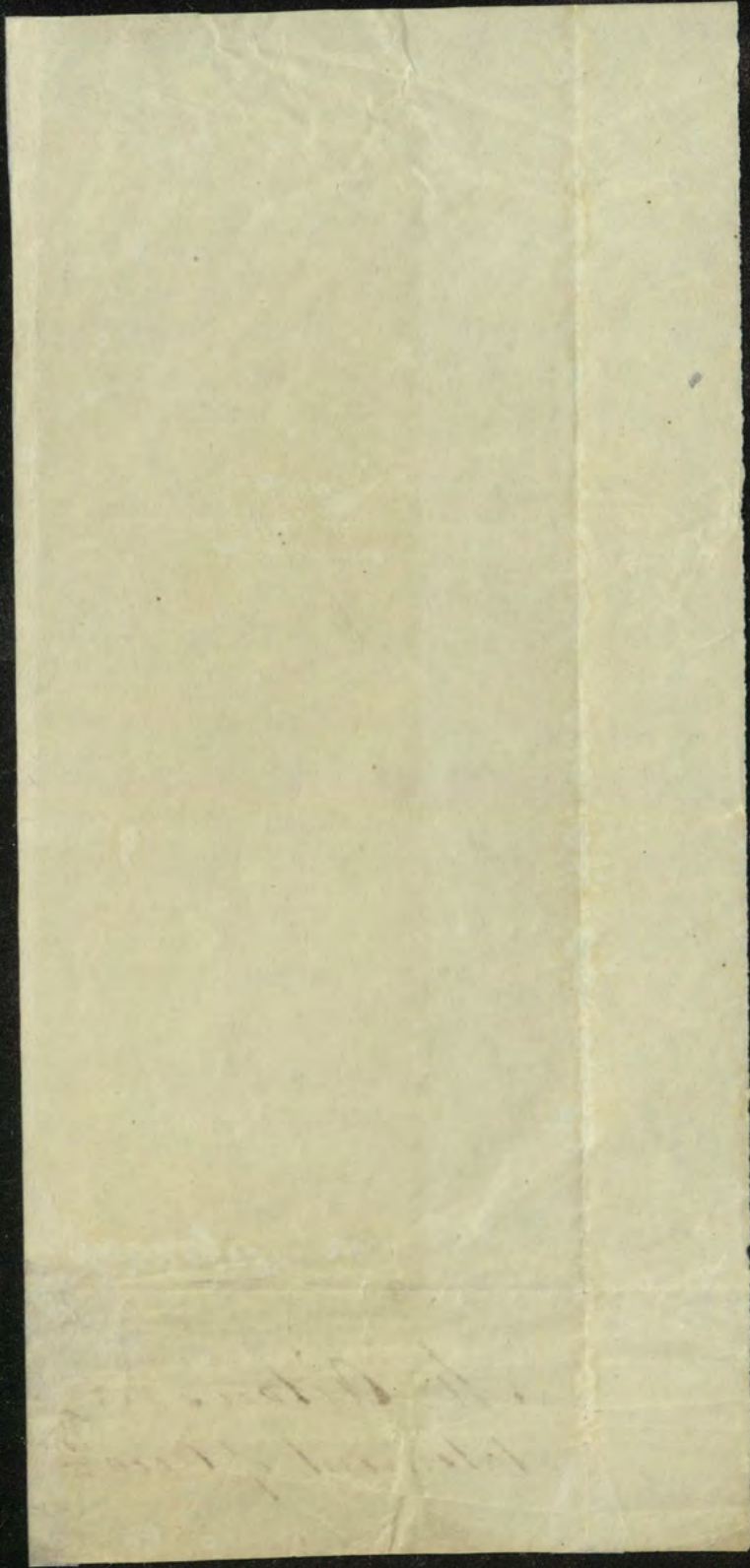




34651 A

*Mr. Aiton's  
Statement of Acco<sup>ts</sup>*







Mr. Charles Bicknell

Mr

I am favour'd with yours this  
 Morning relative to the Sale of Effects that is to take  
 Place at Bagshot Park, my Instructions is to dispose  
 of all those Effects that was apprais'd by me when the  
 Late Admiral Keppell Give up the premises to His  
 Royal Highness. the Catalogues will printed on  
 Monday. when I will send you one: and should there  
 be any one, or more articles, mention'd in the same more  
 than belong to His R. H. it can be pass'd, and be askin  
 I shall act. consistently. I am Sir your most Obedt  
 Wm Kimberley -

Windsor -  
 April 25<sup>th</sup> 1793 -

P.S. If you can furnish me with any  
 more than I am acquainted with  
 I will take care to communicate it  
 so that there may be no mistake  
 W.B. when I took the acct. in the Late Lord Keppell time his  
 servant a Mr. Park. attended me the whole time, and he is  
 in being in Town to speak to the subject - If required



34664

To

Mr Charles Rickwood  
Norfolk Street Strand  
London





His Royal Highness the Prince of Wales -

D<sup>o</sup> To the Estate of the late  
Viscount Keppel Deceased -

To the Amount of a Valuation  
of Stock, Furniture &c: left on  
the premises at Bagshot Park  
when H. R. H. took possession -  
valued by Mess<sup>rs</sup> W<sup>m</sup> & W<sup>m</sup> L:

£ - - -

Received 10<sup>th</sup> October 1788 - from  
His Royal Highness the Prince of Wales By Henry Lytton Esq<sup>r</sup>  
the Sum of Four Hundred & Twelve Pounds 10/2 for one Quarter  
of a Year's Salary as Being in Paid of Purchase of Furniture due  
purchased at Bagshot, & Interest upon the whole  
including 2000 left undischarged up to March 1788

|                      |                  |  |
|----------------------|------------------|--|
| In part of Furniture | 218. 7. 6        |  |
| Int. on the whole    | 194. 1. 8        |  |
|                      | <u>412. 9. 2</u> |  |

G<sup>o</sup> Rogers -

7. 6

1. 8

9. 2

Self

W<sup>m</sup> D<sup>r</sup> D<sup>r</sup> Esq<sup>r</sup>  
Receiver -



His Royal Highness the Prince of Wales—

D<sup>o</sup> To the Estate of the late  
Viscount Kippel Deceased—

To the Amount of a Valuation  
of Stock, Furniture &c. left on  
the premises at Bagshot Park  
when H. P. H. took possession—  
valued by Mess<sup>rs</sup> W<sup>m</sup> & W<sup>m</sup> L:  
Kimberley as acct<sup>l</sup> delivered—

£ 2210:7:6

To Interest on the above Sum  
@ 6% from Christmas 1786 to  
Michaelmas 1788  $\frac{1}{4}$  year  $\frac{3}{4}$

194...1.8.

£ 2412.9.2

Geo Rogers for Selg  
& Tim Duttley<sup>r</sup>  
Receivers—

Geo Rogers dr  
and Mr Wm Laker & Mr  
Duttley  
L 12. 9. 2



W. Rogers Esq  
Gen. M. L. L. L.  
Reppel. var. G. L. L.

1412. p. 2



34666

(Copy) Audley Square 2: February 1787

Gentlemen

As Executors to the late Viscount deppel,  
we consider it as our Duty, to send you the  
accompanying Account, as a Debt due  
from His Royal Highness the Prince of  
Wales - we are

Gentlemen

Yours very humble  
Servants

J. Rogers -  
J. Brett

To Henry Lyte Esq  
Colonel Gerard Lake  
and Colonel Sam<sup>d</sup> Hulse Commissioners  
for executing the Office of Treasurer  
and Receiver General of the Revenues  
of H. R. H. the Prince of Wales -



His Royal Highness the  
Prince of Wales

To the Executors of the late  
Augustus Viscount Sappel

For the Amount of a  
Valuation (as per accounts delivered)  
taken the 29<sup>th</sup> September 1785,  
by W<sup>m</sup>. Kimberley & W<sup>m</sup>. L. Kimberley  
Sworn Appraisers, of all the  
Furniture and Effects, together  
with the Farm Stock, Live and  
Dead at Bagshot Park - given  
up to His Royal Highness the  
10<sup>th</sup> October 1785

L    S  
2210: 7: 6

Audley Square      G. R.  
23 February 1787      J. B.



84667

Despatch upon  
the Service of the  
for the Election of  
Sturminster, and  
Stamford Park  
Bargrave Park

Melville's to the  
James's Hill - 185  
23 February 1777

2510.4.9



34668

Thinking it may be desirable to Mr. Harrison to  
receive at this time a copy of a very late survey  
made of Mr. Collins's Smith's property, with that  
adjoining it, Mr. Wilmetts, known as the clock  
case estate on Deas but heath as may regard  
this locality ~~with~~ <sup>to</sup> the woods or great park,  
Mr. Astor with this view forwarded the same  
to Mr. Harrison with an additional plan  
annexed thereto, of a paddock offered  
by Lord Ashbrook to His Majesty, called  
Deas rails at Old Windsor, & adjoining  
to the great park.

Rev. S. Deas 1744

To George Harrison, Esq



Kew 3 May 1824

Mr Aiton

Respecting Mr Collins  
Smith's property

C



Duchy Cornwall

Jan 23, 1822 -

at Messrs. Biddulph's Ho. - £10,486.10.10

Bill due July 17. - 1,000 - £11,486.10.10

Suppose immediate issue  
to the P. P. - - - - - 6,000

Salaries and Charges at Meckes 1823 say £ 5,486.10.10  
4,450. -  
1,036.10.10

Incomings soon after  
Meckes - - - - -

Rents & profits of houses - say. £3000

Ten Dues - - - - - 2500

Coal Mines - - - - - 2500

8,000.10.10

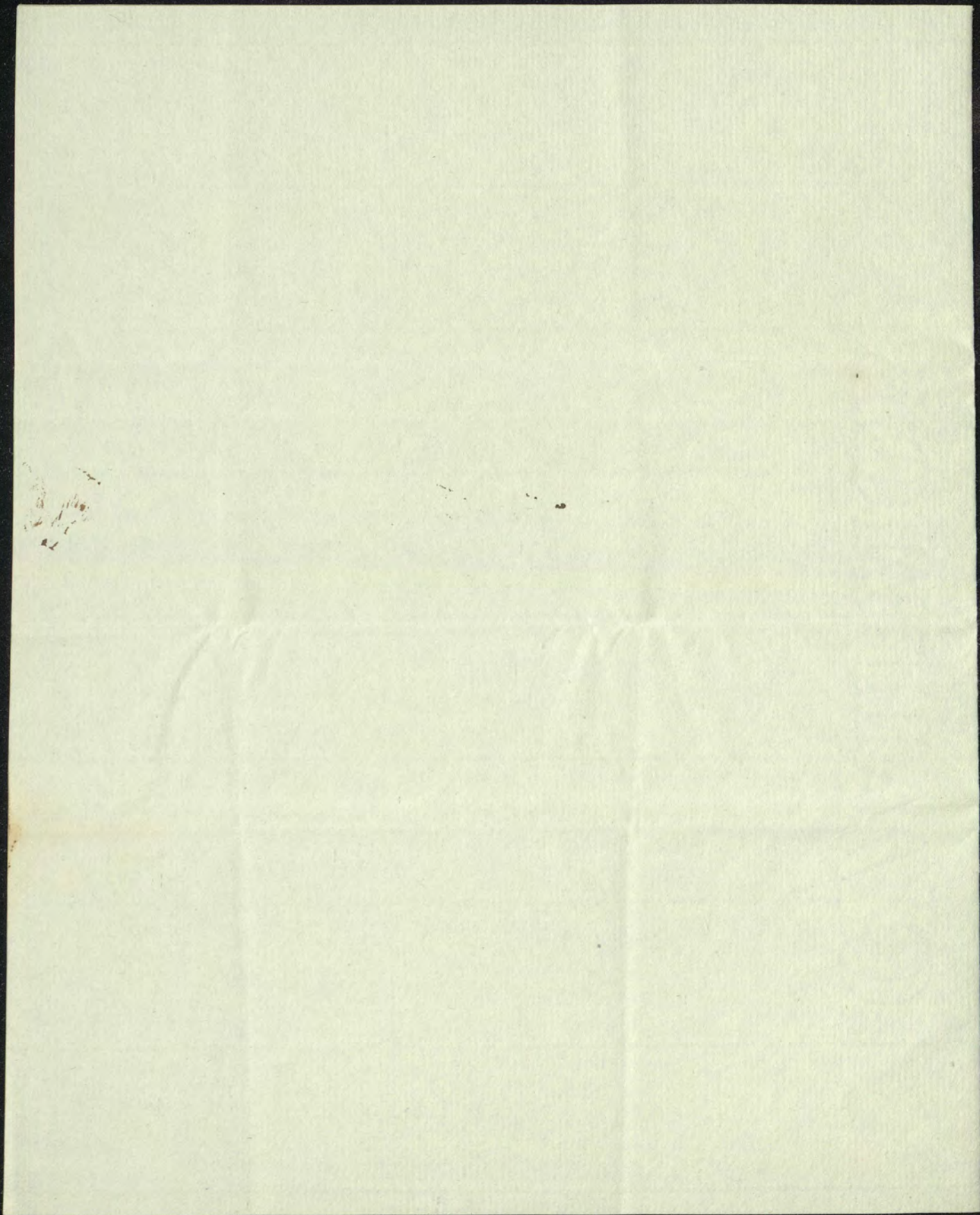
9,036.10.10

Grants for Renewals uncertain

Suppose between this and

Jan 1824 - - - - - £3000







W<sup>th</sup> Loventry

Papers

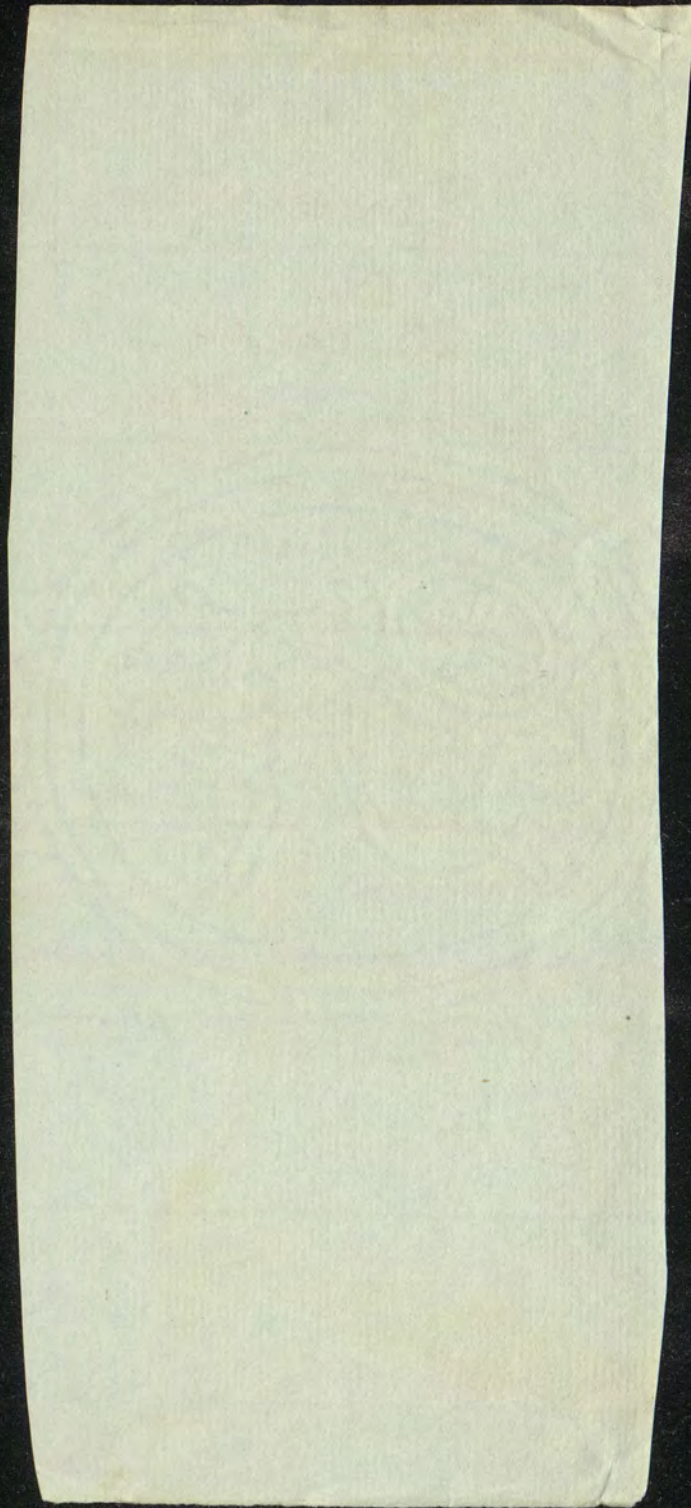
Regarding the  
Purchase of his  
House &c. at Bish-  
-ops gate near Wind-  
sor.

&  
Regarding other in-  
-tended Purchases

&  
Wolly Grove

34669A







34669A

## Wolby Grove

I saw Mr. Riving early in  
the Month of September after  
my Return from Navispete  
and informed <sup>him</sup> that His Majesty  
had informed <sup>me</sup> having left  
the Decision of this Subject  
entirely to the Lords of the  
Treasury - They did not  
<sup>think</sup> they could be justified, and  
indeed that they had not the  
Power under the Circumstances  
of the Vacations put upon this  
property by the Government.  
(I am) in acceding to  
this Opinion and therefore that  
he must consider himself  
at full Liberty to dispose of  
the property in such Manner  
as he may think proper for  
the Interest of his Estate  
Geo. Rivington  
15 Sept. 1723



