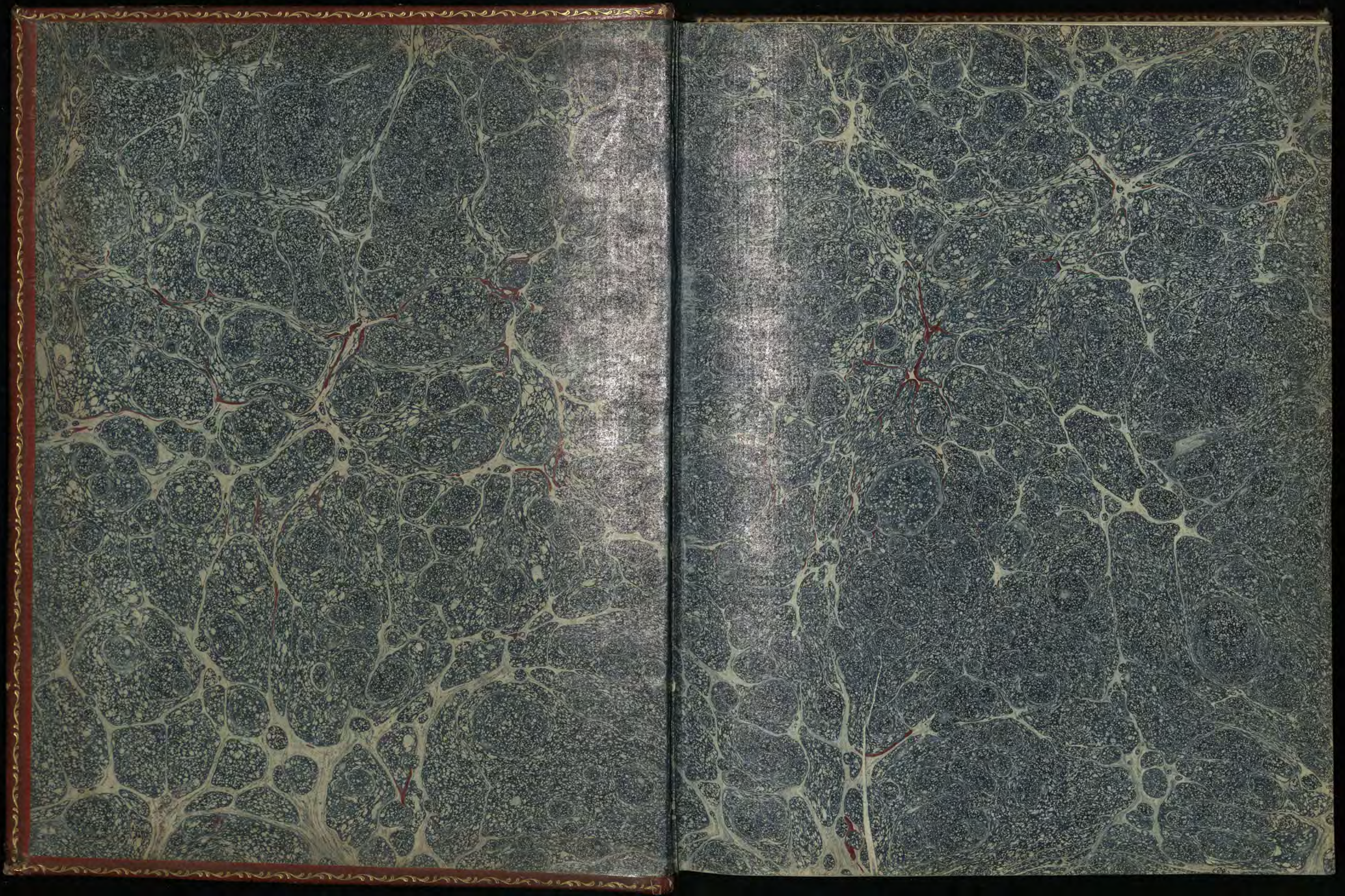


THE FARMS

WINDSOR GREAT PARK



Royal Collection Trust / © His Majesty King Charles III 2024



Rod 1 I. B. wa

Norfolk Farm,

	<i>Acres</i>		£	s	d
Annual Value,	110 of Arable	at 16/	112	-	-
	200 D.	at 10/	100	-	-
	160 D.	at 7/6	60	-	-
	17 of Meadow	at 25/	50	15	-
	150 D.	at 14/	110	12	-
	200 of Leasow	at 6/	60	-	-
<hr/>					
	905 Acres		£	501	7
<hr/>					
	The Sheep Walk in the Park		100	-	-
	Agistment of Oxen in D.		70	-	-
<hr/>					
			£	671	7

Statement,
of
The Produce and Expences
of
The Norfolk Farm.

from 26th October 1797, to 26th October 1798.

Receipts,

Payments,

1798

	£	s.	d.
To Oxen sold,	1037	10	9
To Sheep sold,	269	3	6
To Pigs sold,	272	11	9½
To Wool sold,	120	11	4
To Wheat sold,	3	9	-
To Oats sold,	290	7	9
To Barley sold,	27	11	6
To Peas sold,	2	2	-
To Flour sold to the Labourers	374	-	4
Lost by His Majesty's Charity on this Occasion, as the Corn did not yield in Proportion to the Price set upon it but which it is presumed may not be the Case another Year	98	18	2
To Stock removed to the Flemish Farm, and valued at	8	15	-
To the Value of Chaff to D ^r	2	6	-
To the Value of Bran & Pollard to D ^r	52	10	-
To the Value of Hay and Chaff, consumed by the Park Oxen	287	15	-
Carr: over	2817	12	1½

1798

	£	s.	d.
By the Value of the Stock and Crop at Michas 1797,	1688	-	6
By Oxen bought	362	-	6
By Sheep bought	16	5	6
By Expences on the Sale and Purchase of Cattle,	12	6	6
By Daily Labour	393	15	9
By Great Work	301	7	½
By Wages to Bailiff, Carters, &c.	280	3	6
By Agistment of Oxen at the Flemish Farm	12	18	9
By Agistment of Sheep at D ^r	25	11	3
By the Value of Pigs from D ^r	44	13	-
By the Value of D ^r from D ^r	531	-	-
By Agistment of Cattle and Sheep in the Park,	170	-	-
By the Value of Hay from the Park	54	-	-
By the Value of Corn and Hay from the Flemish Farm,	299	8	½
Carr: over	7191	10	8

Receipts,

	L.	s.	d.
1798			
— Bro: over	28	12	1½
To the Value of Chaff consumed by the Shrub's Hill Oxen,	28	7	6
To the Value of Rye used for Seed at Shrub's Hill,	7	10	—
To the Value of Oats, — D:	11	7	6
To the Value of Agistment of Shrub's Hill Sheep,	5	—	—
To Agistment of Park Oxen in the Meadows,	11	18	—
To the Value of the Stock and Crop at Michaelmas 1798,	499	3	7
	<u>L. 790</u>	<u>2</u>	<u>1½</u>
Deficiency upon this Year's Produce exclusive of the Loss of Rent	157	16	3
	<u>L. 805</u>	<u>18</u>	<u>7½</u>

Payments,

	L.	s.	d.
1798			
— Bro: over	719	10	8
By the Turnips and Rye from Shrub's Hill Farm	49	2	6
By Seed Corn and other Corn	182	3	9
By Manure bought	59	1	8
By Repairs	30	6	9½
By Tradesmen's Bills	80	—	—
By Implements and Furniture	74	9	10½
By Expences of hoeing Turnips	60	—	6
By New Fences	60	—	—
By Hay and Corn Harvests	197	6	2½
By Extra Expences on Sheep	27	5	6
By Miscellaneous Expences	41	11	2
	<u>805</u>	<u>18</u>	<u>7½</u>

Flemish Farm,

	Acres		£.	s.	d.
Annual Value	170 of Arable	at 20/-	170	—	—
	50 of Meadow	at 35/-	87	10	—
	65 D. ^r	at 30/-	97	10	—
	36 D. ^r	at 25/-	45	—	—
	152 D. ^r	at 18/-	136	16	—
	25 Cranbourne D. ^r	at 25/-	31	5	—
	50 Round the Farm House	at 20/-	50	—	—
	50 of Leasow	at 10/-	25	—	—
	<u>598 Acres</u>		£. 643	1	—
	Park Agistment		20	—	—
			£. 663	1	—

Statement,

— of —

The Produce and Expences

— of —

The Flemish Farm.

from 26th October 1797, to 26th October 1798.

Receipts,

	£.	s.	d.
1798			
To Oxen sold to Richmond Park Farm,	0		
To Oxen sold to the Norfolk Farm	531		
To Pigs sold to D ^r	44	13	
To other Pigs sold	1	16	6
To Sheep sold	73	3	1/2
To Oats sold	136	12	3
To Wheat sold	57	6	
To D ^r sent to Norfolk Farm	174	1	6
To Oats D ^r	4	17	6
To Beans D ^r	60	9	1/2
To Hay D ^r	60		
To Hay sold to the Park	282	15	
To the Agistment of Sheep belonging to the Norfolk Farm,	25	11	3
To the Agistment of Oxen belonging to D ^r	12	18	9
Carr. over	1473	4	3

Payments,

	£.	s.	d.
1798			
By the Value of the Stock and Crop at Michas 1797.	2730	5	6
By Oxen bought	119	15	
By D ^r from the Park	220	10	
By D ^r from Shrubs Hill	58	16	
By Expences on Sheep		4	
By Sows from the Norfolk Farm	8	15	
By Agistment of Cattle in the Park	20		
By Expences on the Sale & Purchase of Cattle	6		3
By Daily Labour	195	18	1/2
By Great Work	142	1	2/2
By Wages to Bailiff and Carters	75	12	
By Hay and Corn Harvests	203	9	1
By Mixed Labour	16	4	7/2
By Expences of hoeing Turnips		15	
By Seed corn bought	13	10	
Carr. over	3811	16	1/2

Receipts,

	L.	s.	d.
1798			
— Bro ^t . over —	1473	4	3
To the Value of the Stock and Crop at Michas 1798,	2359	-	6
	<hr/>		
	L.	3832	4 9
Deficiency upon this Year's Pro- duce, exclusive of the Loss of Rent	116	18	9½
	<hr/>		
	L.	3949	3 6½

Payments,

	L.	s.	d.
1798			
— Bro ^t . over —	3844	16	½
By Tradesmen's Bills	63	8	6
By Manure bought	7	-	-
By Expences of mowing Rushes	12	3	-
By the Value of Chaff from the Norfolk Farm	2	6	-
By the Value of Bran and Pollard from D.	52	10	-
	<hr/>		
	3949	3	6½

Sprub's Hill Farm,

	(Acres)		£.	s.	d.
Annual Value	110 of Arable	at $7\frac{1}{6}$	41	5	—
	60 of Leasow	at 7/—	21	—	—
<hr/>					
	170 Acres	£.	62	5	—
<hr/>					
	Park Agistment		10	—	—
<hr/>					
		£.	72	5	—
<hr/>					

Statement, —
— of —
The Produce and Expences
— of —
The Shrubs Hill Farm. —

From 26th October 1797, to 26th October 1798.

Receipts,

Payments,

1798		£	s.	d.
To Oxen sold,		118	2	9
To the Value of Oxen sold to the Flemish Farm,		58	16	—
To the Value of Turnips and Rye sold to the Norfolk Farm,		49	2	6
Lost by purchasing Stock		20	—	—
To the Value of the Stock and Crop at Michas 1798,		645	12	—
		<hr/>		
		£	891	13 3
Deficiency upon this Year's Produce, exclusive of the Loss of Rent		4	2	2½
		<hr/>		
		£	895	15 5½

1798		£	s.	d.
By the Value of the Stock and Crop at Michas 1797,		417	11	—
By Oxen bought,		66	15	—
By Sheep bought		164	5	9
By Agistment of Cattle in the Park		10	—	—
By Agistment of Sheep at the Norfolk Farm		5	—	—
By Expences on Sale and Purchase of Cattle		4	13	7
By Seed Corn bought		9	11	6
By Hay and Corn Harvests		22	—	6
By Tradesmen's Bills		15	3	9
By Manure bought		—	8	—
By Expences of Thatching		5	—	7½
By Miscellaneous Expences		1	1	—
By the Value of Hay and Corn from the Norfolk Farm,		35	17	6
By Daily Labour		100	—	3
By Great Work		38	7	—
		<hr/>		
		895	15	5½

Observations,
upon the preceding Statements,
Humbly submitted to His Majesty.

*The Improvements in Windsor Great
Park, as far as respected the Establishment of
the Farms, were considered by me as completed
at Michas 1797 —*

*From that Time, as it was His Majesty's
Pleasure to fix M^r. Smart as a Check Clerk upon
the Whole, the Produce and Expence of each Part
has been kept distinct. —*

*The large Tract of barren Land that has
been*

been brought into Cultivation — the Number of
useful Experiments that have been made — and
the Establishment of so many Oxen upon so large
a Scale of Agricultural Labour — are truly flat-
-tering, are highly deserving, Imitation, and
must have a beneficial Tendency; to say nothing
of their still greater Importance, in the Pre-
-sumption that they may in some Measure
have contributed to His Majesty's Amusement
and Health which is of all Things the most
valuable to the Community —

Still there is one wanting — and that is,
to make them yield a fair Return of Profit — &
when this can be effected, it will be impossible
to describe the Satisfaction I shall feel —

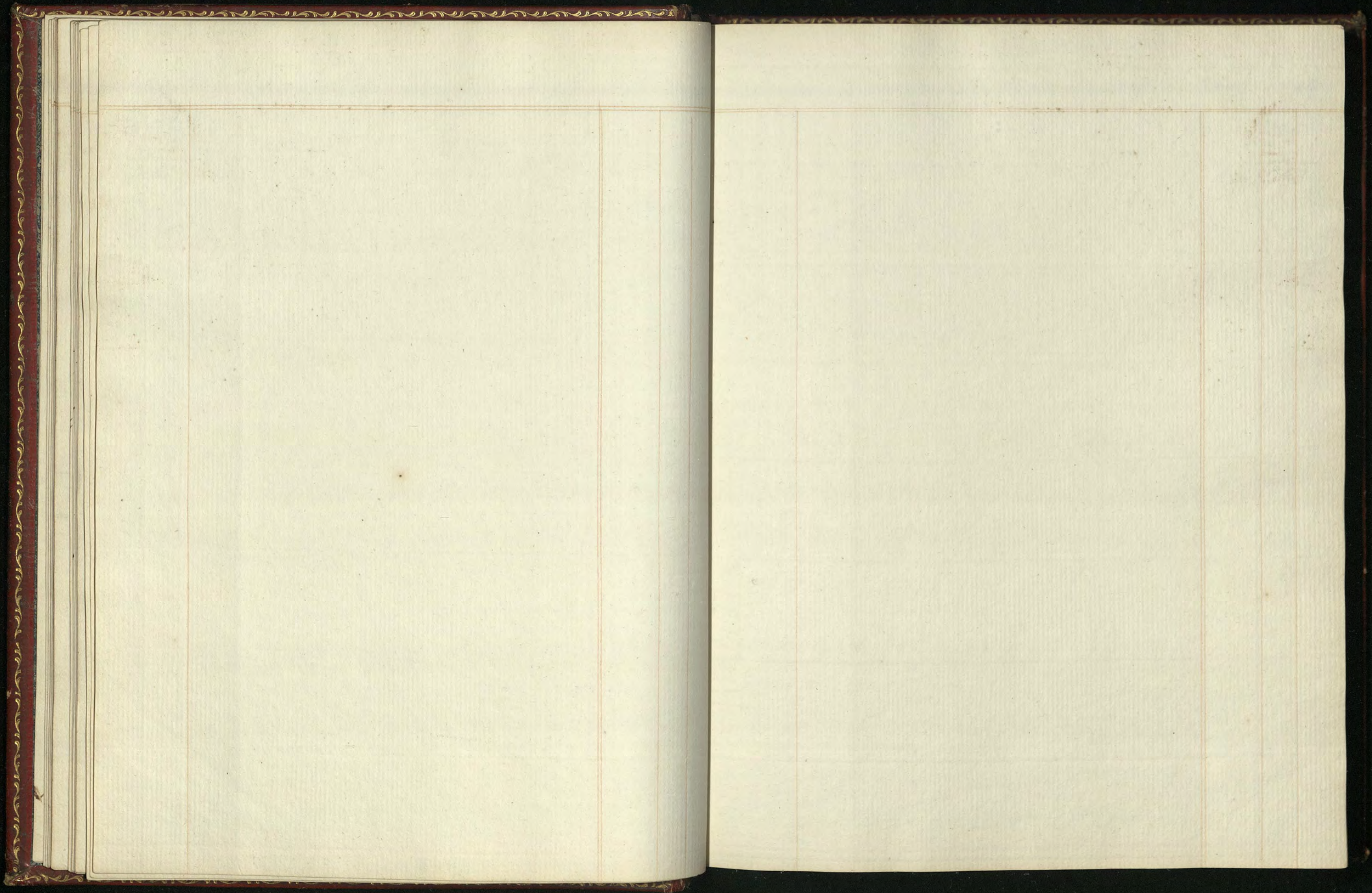
His Majesty will observe that the first
Point towards ascertaining the true State of the
respective

respective Returns of these Farms, was to set a fair annual Value upon each of them; which I have done — And the next Thing, to charge all Expences of Labour and Things purchased on one Side, and every Article of Produce and Sale on the other: And I must confess myself surprised and mortified, that instead of a Surplus each Farm should be minus. — It is true that last Year was very unfavorable to Grazing, and great Loss was sustained by the Flock, which it is to be hoped will not be the Case in Future — But I cannot see any Reason why the Rents cannot be made, or at least nearly so. — Mr Frost is so sanguine about the Flemish Farm, that he seems to think there will very soon be more than the Rent produced upon it; and Milk seems to think that at least 500£ a Year ought at all Events to be returned from the Norfolk Farm, and does not doubt of bringing it about. — These are their Opinions expressed to me

me; but though I know that the Rents sho^d be returned, and would be returned if the Responsibility could be so impressed upon the Minds of all the different Superintendants, so that they might act with the same Zeal as a Farmer does for his own immediate Interest; yet I doubt whether the Result will ever be equal to what they seem confident it will. — Suffice it, that on my Part nothing shall be wanting to point out from Time to Time what is proper to be done to promote good and profitable Husbandry, and to avoid Error. And by the Continuance of Mr. Smart's Check, His Majesty will be shewn how Things go on, and how they turn out every Year. But His Majesty will I trust look no farther to me for Responsibility, as the greatest Part of it necessarily must and ought to attach to those concerned in the Minutiae and executive Part of the Business; such as, the Purchase, Care, and Management
of

of the Cattle ; the Keeping down the Expence of
Labour and incidental Expences ; and the due
Attention to Seasons in Cropping ; on which the
greatest Part of the Profits of Farming depend.

1047485



A number of blank pages follow
and have not been photographed.

A number of blank pages follow
and have not been photographed.

