

BOARD
OF
WORKS

ACCOUNTS
BOOK

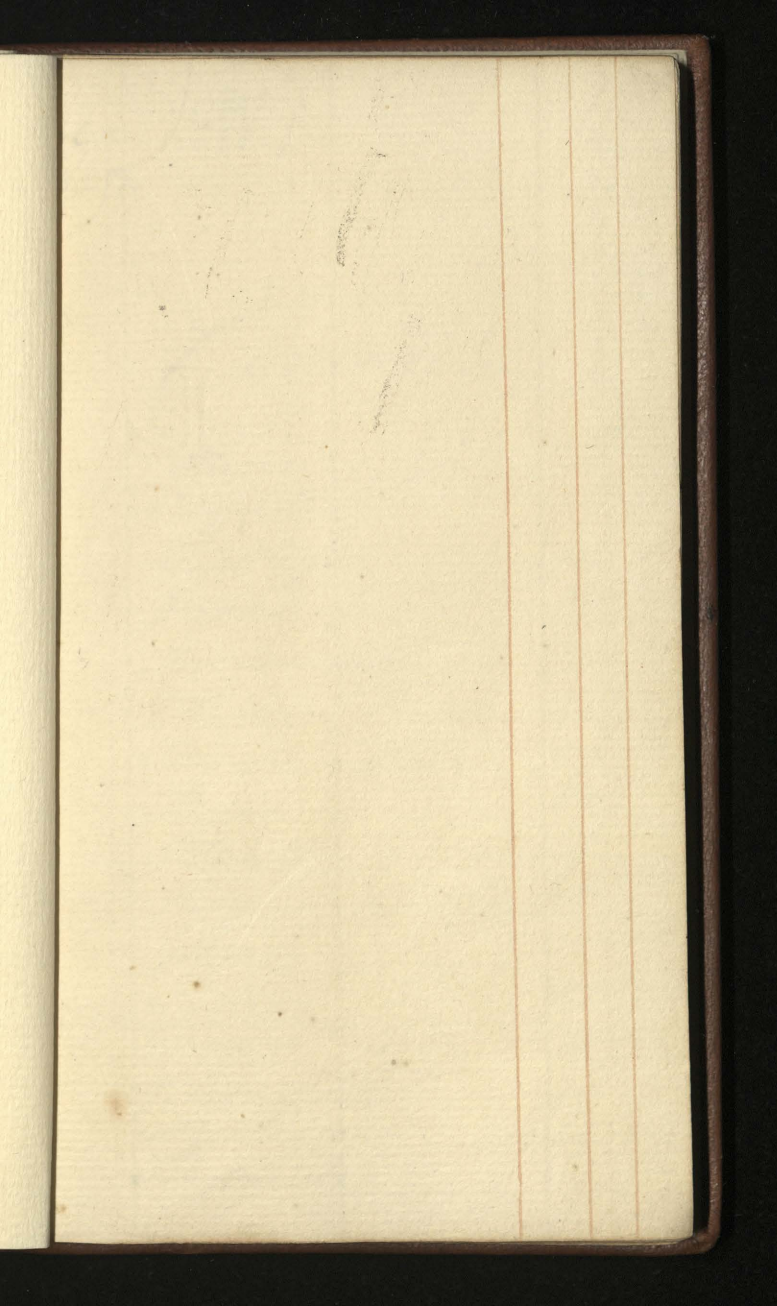
1750



Sur J. P
Abel de S. H.
4063

RA.
Accession (541) Add. 17/77

p. 12 ff. Hampton Court



40
MS

4063

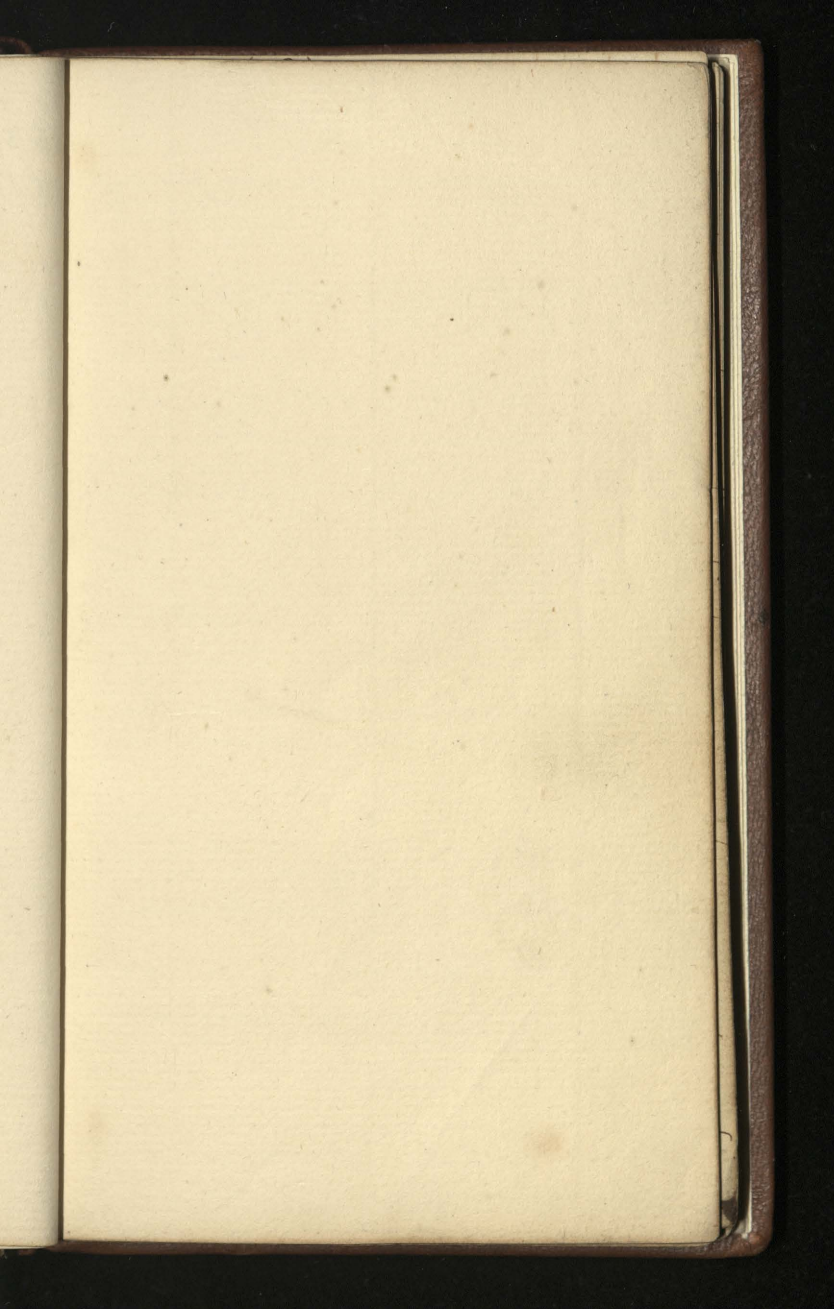
MISS. Ph

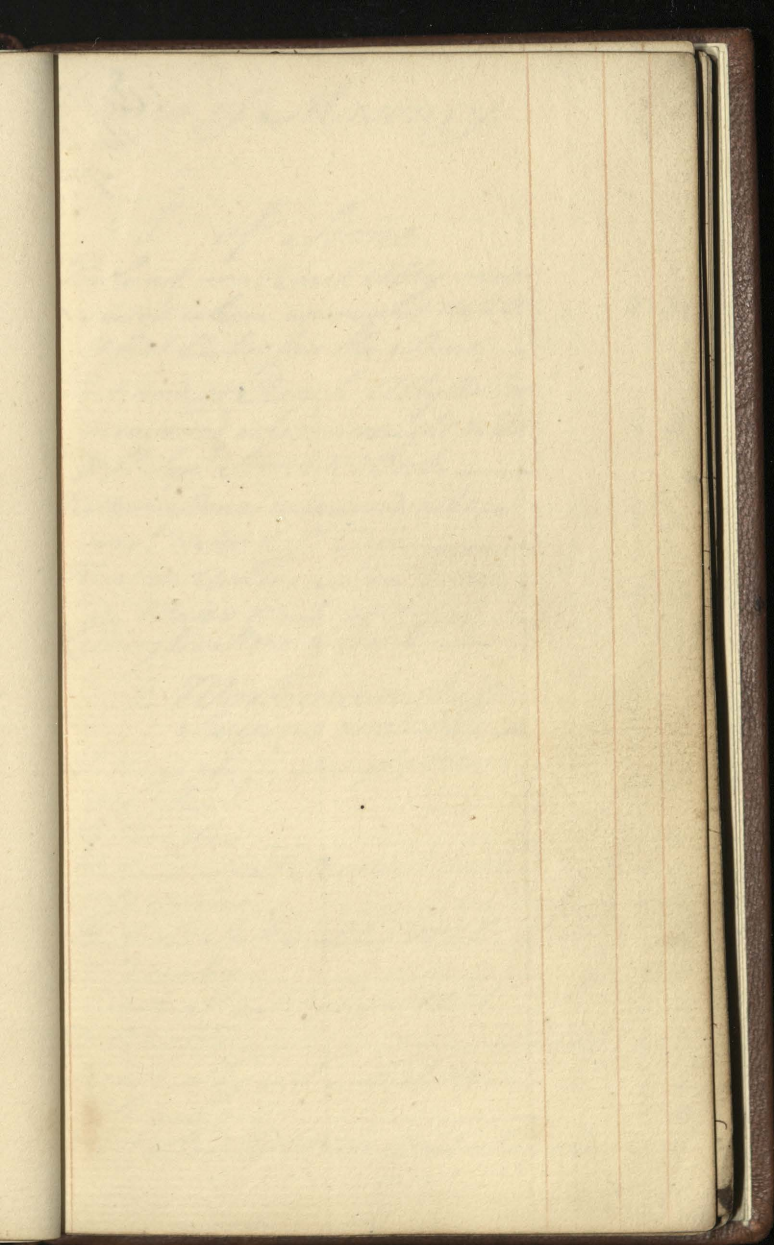
W.K.

(LA)

Contracts.

	Page
Mason	1
Carpenter	7
Bricklayer	12
Joyner	17
Ironmonger	25
Plasterer	34
Black Smith	37
Painter	38
Plumber	39
Slater	41
Glazier	42
Tavior	43
Digger	44
Garden Tubbs	45
Mattlayer	45
Tin-man	46





As the
the
75

Por

5

#

Por

m

#

Ke

m

Ke

Ke

Por

#

D

Por

D

Por

D

Re

D

Re

D

PD

Rates of Masonry.

1st of Stone.

Portland or Roach Abby mea- sured when wrought & sett #foot Cube for the Stone —	2.3
Portland or Roach Abby Ashles measured when wrought & sett #f. Sup. Stone & Work —	2.3
Ketton Stone measured when wro. & set, #f. Cube —	2.3
Kentish Ashles set in Terrass in Water Work at #foot —	3.4
Reddington Stone & work —	

2 Workmanship, Sawing included

Portland plain straight Work #f. Sup.	1.2
D. Circular	1.4
Portland strait Rustick work — D. Circular	1.4
Portland Str. molded Work — D. Circular	1.6
Roach-abby str. plain Work — D. Circular	1.4
Roach-abby str. molded Work — D. Circular	1.2
Roach-abby str. molded Work — D. Circular	1.4
Portland Architrave cleand & sande Ca	3.6

15

16

17

18

Statuary Marble very clear 1

Black Marble 1

Plain work to D^o of the sup^l 1

Statuary Slab 1

19

20

21

22

23

24

25

26

15	Free Stone str. ^t plain work	8
16	D. ^o Circular	9
17	Free Stone str. ^t molded work	1
18	D. ^o Circular	1. 1

3 Marble.

19	Black & white veined Italian Marble measured when wrought & set at $\frac{1}{2}$ f. ^t Cube	1. 1
20	Purple Marble measured when wro. & set $\frac{1}{2}$ f. ^t Cube	1. 5
21	Plymouth, Darbyshire or Torbay Marble, measured when wro. & set, $\frac{1}{2}$ f. ^t Cube	15

A. Workmanship in Ditto

22	Straight plain Work in white & veined Marble, $\frac{1}{2}$ f. ^t Sup. ^l	3. 0
23	Str. ^t molded small & great Memb. ^{rs}	6
24	Circular plain work $\frac{1}{2}$ f. ^t	4. 6
25	Circular molded small & great Memb. ^{rs}	7
26	If any of the afores. ^d Articles are done in brittle Marbles as Purple Torbay Black & yellow, or Egyptian, add $\frac{1}{2}$ f. ^t	1

1750.

As Pa
the Bo

27

28

29

30

31

32

33

34

35

36

37

38

39

40

41

42

43

1750
s Pa
e Bo

5. Paving wth Stone or Marble

27	Portland Stone Paving str. ^t joints $2\frac{1}{2}$ thick, $\frac{1}{2}$ ft	1.9
28	D. ^o Circular or Octagon	2
29	D. ^o with black marble Dots	2.2
30	Portland str. ^t joints $1\frac{1}{2}$ thick $\frac{1}{2}$ ft	1.7
31	D. ^o Circular or Octagon	1.9
32	D. ^o with black marble Dots	2
33	Ketton Stone Paving str. ^t joints $2\frac{1}{2}$ thick	1.7
34	D. ^o Circular or Octagon	1.9
35	D. ^o with black marble Dots	1.10
36	Purbeck Stone Paving in courses	10
37	D. ^o in mitchels rubb ^d	1.2
38	Common Purbeck Paving	8 $\frac{1}{2}$
39	Marble Paving w. th large Slabs 2 in thick	7
40	D. ^o $1\frac{1}{2}$ thick	6.3
41	Marble Paving in common Squares	2.7
42	D. ^o in Octagons	3
43	Swede & Denmark Paving Or Purbeck paving & joints & relaid	2

1750

As Pass
the Book

44

45

46

47

48

1-49

50

51

52

1-53

3rd Thick - 1-54

5-55

56

57

58

59

60

6 Stone Steps.

AA	Portland Str. Astragal Step 12 ground tread in clear when set 7ft	3.7
45	D.° 13 inch	3.10
46	D.° 14 inch	4
47	D.° 15 inches	4.3
48	D.° 16 inches	4.6
1-49	Purbeck str. Steps 7ft run	2.2
50	Portland Str. plain Step 7ft 12 in. in tread	2.10
51	Any of the 3 Steps Circular add 7ft	6

7 Chimney Pieces.

52	Portland Chimney Pieces & Slabs 1 1/2 thick, 7ft	1.8
1-53	D.° 2' thick	1.10
4-54	D.° 2 1/2 thick	2
5-55	White & veined Marble in Chimney Pieces, Slabs, Steps, & Nosings from 1/4 thick to 1 1/2 7ft Supl	5.8
56	D.° 2' thick	7
57	D.° 2 1/2 thick	8.6
58	Torbay & Plymouth Marble Pieces 1 1/2 thick	5.6
59	D.° 2' thick	6.6
60	D.° 2 1/2 thick	7.6

1750
as Past
the Br

61

62

63

64

65

66

Single 1

67

1

Lab^r to fire Stone

68

69

70

71

72

73

74

1 1/2

1 1/2

1750
Part
Bore

61	Purple Marble in Chimney pieces 1 1/2 in ^t thick	10
62	D. ^o 2' thick	11
63	D. ^o 2 1/2' thick	12.6
64	White & veined marble, Head & Jamb. in one Stone 1 1/2' thick	8.6
65	D. ^o 2' thick	9.8
66	D. ^o 2 1/2' thick	10.10
67	Fire Stone Coverings & Hearths of double Rygate	1.3

If any Pieces are to be architrued
or molded large, or of an extra.
thickness, they must be measured
Cube & Superficial.

8 Particulars

68	Portland & Purbeck Rowling Stones, to be cubed & measured as other Stone Work	
69	Rounding Portland or Purbeck Rowling Stones, $\frac{1}{2}$ f. Sup ^l	10
70	Fire Stone Oven Hearths of double Rygate, $\frac{1}{2}$ f. Sup ^l	1.3
71	D. ^o Oven Search $\frac{1}{2}$ f. run	1.3
72	Fire Stone Corbels, jamb, and Lintel to Oven, $\frac{1}{2}$ f. Sup ^l	1.3
73	Sink Stone $\frac{1}{2}$ f. Sup ^l	2
74	Run. of Gutter new Purbeck	

1750-

As Part
the Board

74

75

76

Mortice Holes.

77

78

3 79

1 80

1 81

6 82

6 83

5 84

5 85

5 86

5 87

88

89

90

91

Past Book	74	Sawing Marble $\text{\textit{ff.}t}$	1
	75	Sawing Portland $\text{\textit{ff.}t}$	4
	76	Sawing Free Stone $\text{\textit{ff.}t}$	2
bles.	77	Cutting Boles for Iron work, each	2
	78	A Foreman Mason $\text{\textit{ff.}day}$	3
3	79	D ^o able men	3
1	80	Labourers $\text{\textit{ff.}day}$	1.10
1	81	Old marble Chimney Pieces taken down fine Sanded, pollitt & set at $\text{\textit{ff.}t}$	1
	82	Do not taken down $\text{\textit{ff.}t}$	0 9
6	83	Old marble taken down pointed crompt & set each	6
5	84	Old Portland D ^o	5
	85	Old Covings taken down cleaned & set $\text{\textit{ff.}t}$	3
	86	Old Purbeck Paving squared & laid $\text{\textit{ff.}foot}$	2
	87	Old Step new jointed & set $\text{\textit{ff.}t}$ sup ^e	4
	88	Cramping $\text{\textit{ff.}t}$ run	3
	89	Windrick Stone $\text{\textit{ff.}t}$	2.4
	90	Heath Stone, $\text{\textit{ff.}Load}$	1.3
	91	Scapeling of D ^o $\text{\textit{ff.}Load}$	7.6

ⁱⁿ
2 Ridge Roll of Iron

1040 N^o Sack of Oak Sawdust red House la

N^o

1.

2

3

4

5

3.0

6

8

2.0

3.0

Rates of Carpenters Work.

N ^o	Description	Rate
1	Oak Door Case with Staff & rabbetted reduced into Cub. feet & all others in this nature, at 4/6 ^t Cube	3. 10
2	Circular d. ^o the Circ. part only to be measured, at 4/6 ^t cube	5. 6
3	Ferr Door Case with Staff & rabb. ^t reduced into Cub. feet, at 4/6 ^t	2. 10
4	Circular d. ^o the Circ. part only to be measured, at 4/6 ^t cube	4
5	Oak Window wrought & framed - reduced into cub. feet, at 4/6 ^t cube	4. 6
6	Ferr d. ^o at 4/6 ^t cube	3. 10
7	Circular to Oak d. ^o the Circ. part only to be measured, at 4/6 ^t cube	6
8	Circular to Ferr d. ^o at 4/6 ^t cube	4. 6
9	All Ferr Timber framed & not plain Lab. ^r & all other Charges incl. 4/6 ^t cube	2. 6
10	Ferr Timber used rough & not framed at 4/6 ^t Cube	2
11	Rough Oak framed only & not plain at 4/6 ^t Cube	3. 8
12	Oak used rough & not framed, 4/6 ^t cube	3
13	Extra Work of Trusses in Beams run. & measure, at 4/6 ^t run.	1

1750—
As Past at
the Board
1.1

14

15

16

Supl - 7 - 17

18

19

20

21

22

23

24

25

26

27

14	Whole Deal Cornice girt without modillion at $\frac{1}{2}$ ft. superficial	1
15	D ^o girt with Modill. ⁿ $\frac{1}{2}$ ft. sup	1. 6
16	Steps of common Stairs, strings & brackets incl. at $\frac{1}{2}$ ft. run	1
17	Sec ^d best d ^o string boards and plain d brackets incl. $\frac{1}{2}$ ft. run	1. 6
18	Clean D ^o or Wainscot d ^o w th carv'd brackets $\frac{1}{2}$ sample $\frac{1}{2}$ ft. run	2
19	Fir Rail & Ballist. $\frac{1}{2}$ in $\frac{1}{2}$ ft. run	3. 9
20	D ^o circ. or rampt in fir, at $\frac{1}{2}$ D ^o	9
21	D ^o in eight Wainscot, at $\frac{1}{2}$ D ^o	5. 6
22	D ^o circ. or rampt in R ^t Wainscot, $\frac{1}{2}$ D ^o	11
23	Fir Rail & Ballisters 3 Square at $\frac{1}{2}$ ft. run	3
24	D ^o circular or rampt	7. 6
25	R ^t Wainscot Rail & Ballist. $\frac{1}{2}$ 3 in square, at $\frac{1}{2}$ ft. run	4. 6
26	D ^o circ. or rampt	9. 6
27	R ^t Wainscot Rail & Ballister 2 in $\frac{1}{2}$ ft. at $\frac{1}{2}$ ft. run	4
28	D ^o circular or rampt	8. 6
29	Rafter feet & Eves board, $\frac{1}{2}$ ft. run	6
30	Gutters & Bearers $\frac{1}{2}$ ft. sup	6
31	Rough Boards listed clear of Lap, at $\frac{1}{2}$ square	1. 5
32	D ^o listed & shot clear of Lap, $\frac{1}{2}$ sq	1. 7
33	Folding joint Boards shot clear of Lap, at $\frac{1}{2}$ square	1. 12

1750-
As Past at
the Board

1-18-6

2-10-6

3-10-0

Plat 4: 2 Inch D ^c Batten to Walls	4-5-0	6
Inch Furrings to Floors	4-5-0	4-6
1 1/2 D ^c		7
Sound boarding to floors		1 1/2

34	Common str ^t joint Boarding clear of Sap, at $\text{fl} \text{sq}^r$	2	5
35	Second best Boards nail'd, at $\text{fl} \text{sq}^r$	2	10
36	Second best d ^o dowel'd, at $\text{fl} \text{sq}^r$	3	5
37	Clean Deal Flooring of 10 & 12 ^{ft} Boards dowel'd, $\text{fl} \text{square}$	6	5
38	Clean long Boards dowel'd from 14 to 30 ^{ft} at $\text{fl} \text{sq}^r$	8	10
39	R ^t Waincot $\frac{1}{2}$ Boards dowel'd & clean'd, at $\text{fl} \text{sq}^r$	8	
40	Work, nails, & dowels to clean dow- el'd Floor, or 2 best d ^o Dowel'd, at $\text{fl} \text{square}$	1	
41	Work & nails of str ^t joint Floor, $\text{fl} \text{sq}^r$	12	
42	Work & nails of folding joint d ^o $\text{fl} \text{sq}^r$	9	
43	Taking up & new laying of dowel'd Flooring, w th nails, dowels & plain- ing the same included, at $\text{fl} \text{sq}^r$	16	
44	Taking up new laying & new plain- ing of str ^t joint Flooring, $\text{fl} \text{sq}^r$	10	
45	Firring of old Floors, scantling 4 & 3, at $\text{fl} \text{sq}^r$	18	
46	Rough Silt Deal Boarding $\text{fl} \text{sq}^r$	15	
47	Whole Deal groov'd tongu'd & lined with whole Deal, single measure at $\text{fl} \text{f}^t \text{Sup}^t$	1	2
48	D ^o battin'd, or groov'd tongu'd and battin'd, at $\text{fl} \text{f}^t \text{Superf}$	1	

1750-
As Part of
the Board

49

50

51

$-\frac{1}{2}$

52

53

54

55

56

57

58

59

60

61

62

63

64

49	Whole Deal groov'd tongu'd & lined w. th Slit Deal, single measure, at ff. Sup!	10
50	Whole Deal groov'd tongu'd & plain'd on both sides single measure at ff. Sup!	8
51	Whole Deal ledg'd & battind single measure, at ff.	9
52	D. ^o ledg'd only single meas. ^{re} ff.	8
53	Double Deal lined w. th whole Deal groov'd & tongu'd single mea- sure, at ff.	1. 10
54	D. ^o battind at ff. Sup	2. 3
55	3 inch Wainscot lined w. th inch & 1/2 D. ^o groov'd & tongu'd & fixing on Iron work single meas. ^{re} ff.	5
56	2 inch D. ^o lined with inch & 1/2 d. ^o at ff.	4
57	1 inch & 1/2 d. ^o lined w. th inch d. ^o ff.	3
58	Whole & Slit Deal Partition, wro. ^t on both sides, single meas. ^{re} ff.	6
59	Slit Deal groov'd tongu'd and ledg'd D. ^o measure &c. ff.	4
60	Slit Deal Lining of Walls, ff.	2
61	Slit Deal weath. ^r boarding, at ff.	4
62	Groyn Centering, at ff.	1
63	Strait Centering at ff.	15
64	Centering to Windows & Doors at ff. Sup!	3

6 1/2

1750 -
As Past at
the Board.

65
66
0-6-67
68
69
70
71
72
73
74
75
76
77
78

Use & waste — for F¹ cube — 8
22 Ephes 3:6 La use & wast of Pa — 102

65	Outside Center pieces, each	1
66	Cove bracketing girt $\text{\textit{ff}}^t$ Sup!	6
67	Whole Deal Drovers shelf & bearings i. measure, at $\text{\textit{ff}}^t$	8
68	Double Deal d. S. measure, at $\text{\textit{ff}}^t$	1
69	Elm Drest ^t or Beach, $\text{\textit{ff}}^t$ Tube	4
70	Rack Staves 2 ⁿ Diam. turned, $\text{\textit{ff}}^t$ doz.	7
71	Bails $\frac{1}{2}$ diam. $\frac{1}{4}$ long turned, each	5
72	2 in Oak Plank listed nails and labour included, at $\text{\textit{ff}}^t$	8
73	2 inch Firr d.° at $\text{\textit{ff}}^t$	6
79	2 inch Oak Plank listed & shot d.°	8
80	2 inch Firr d.° at $\text{\textit{ff}}^t$	6
74	3 inch Oak plank listed, at $\text{\textit{ff}}^t$	11
75	4 inch d.° at $\text{\textit{ff}}^t$	1.3
76	Able Men $\text{\textit{ff}}^t$ diem	2.9
77	Sawyers, a pair of, $\text{\textit{ff}}^t$ diem	5
78	Apprent.	2.3

1750 -
As Part of
the Board.

do

No
1
1-5-0 --- 2
- 16 --- 3
4
1.6 --- 5
6
7
0-16-0 --- 8
9
11.0 --- 10
11
12

0 -
rest at
Board.

Rates of Brickwork &c.

		<i>1st of Bricks</i>	
No			
	1	Red Stock Bricks, $\text{\textit{f}}\text{m}$ thousand	1. 12
5-0	--2	Gray Stock Bricks $\text{\textit{f}}\text{m}$	1. 2
16	--3	Place Bricks $\text{\textit{f}}\text{m}$	16
	4	Clay paving Bricks, $\text{\textit{f}}\text{m}$	1. 12

Bricks at Hampton Court
 $\text{\textit{f}}\text{m}$ Extra. 1

2 of Tyles

6	--5	Plain Tyles $10\frac{1}{2}$ ⁱⁿ by $6\frac{3}{4}$ ⁱⁿ $\frac{3}{4}$ ⁱⁿ thick $\text{\textit{f}}\text{m}$	1. 5
	6	Ridge Tyles 13 long $\text{\textit{f}}\text{m}$	12. 6
	7	Hipp Tyles $10\frac{1}{2}$ long $\text{\textit{f}}\text{m}$	12. 6
16-0	--8	Dutch Pantyles glazed, $\text{\textit{f}}\text{m}$	18
	9	English do	15
11-0	--10	Common English Pantyles $14\frac{1}{2}$ by $10\frac{1}{2}$, not glazed, $\text{\textit{f}}\text{m}$	10
		Paving Tyles 8 Sq. 1 thick $\text{\textit{f}}\text{m}$.
	11	do 10 Sq. $1\frac{1}{2}$ thick $\text{\textit{f}}\text{m}$	12. 6
	12	do 12 Sq. $1\frac{1}{2}$ thick $\text{\textit{f}}\text{m}$	1. 5

13
14

5 - 15
16
17
8 - 18
19
20

0 - 11 - 23

	5	2
26 * Lime of Sun. at Hampt. ⁿ Cott.	11	}
27 Pantile Laths of Door ⁿ	2	
28 Heart Laths of Bundle	2	

1750: Heart Laths of Oak of Bundle	6	0	0
Terr Laths of Bundle	7	2	6

Drift Sand of Load 3

9-0-0
6-0-0

13	Dutch white Tiles $\frac{1}{2}$ Rod	10
14	Dutch painted Tiles $\frac{1}{2}$ Rod	10
	Pan tiles $\frac{1}{2}$ Rod Extra. at H. Court	1

3. of Mortar & Lime.

15	Course Mortar $\frac{1}{2}$ Rod	6
16	Fine Mortar $\frac{1}{2}$ Rod	9
17	Groove Mortar $\frac{1}{2}$ Rod	8
18	Lime & Hair Mortar $\frac{1}{2}$ Rod	9
19	Terras Mortar beaten $\frac{1}{2}$ Bush	6
20	Ditto, not beaten $\frac{1}{2}$ Rod	3.6
21	Pargitton Mortar $\frac{1}{2}$ Rod	6
22	Wett Hair for Mortar $\frac{1}{2}$ Bush	1.6
23	Lime $\frac{1}{2}$ Rod (or 25 Bushels)	10
24	Fine sifted Lime $\frac{1}{2}$ Bushel	6
25	Sand $\frac{1}{2}$ Load	2.9

4 of Brick Work

29	Common Place Brick Work	} 5.15 5.19.6
	reduced to $1\frac{1}{2}$ thick, $\frac{1}{2}$ Rod	
	When faced w. $\frac{1}{2}$ gray Stocks	} 1.7.6
	add $\frac{1}{2}$ Rod	
30	Gray Stock Brickwork, reduced $\frac{1}{2}$ Rod	} 7.3
31	Brick Work in Terras, $\frac{1}{2}$ Rod	1A
32	Brick work run w. $\frac{1}{2}$ Grout or Putty, $\frac{1}{2}$ Rod	} 4
	Red Stock Brickwork $\frac{1}{2}$ Rod	
	Brickwork to Stoves $\frac{1}{2}$ Rod	

1750 -
As Part at
the Board

33

1:6:0

34

35

1-4

36

37

38

39

40

1-7

41

42

3-0

43

3-6

44

	33	Old Brick-work pulled down and the Bricks cleand, & Rod	6
6-0	34	D ^o Allowance to be made by 3 ^d Bricklay ^r for old Brickwork & R ^d Brickwork at St. Court add 5 Extra 5 of Ornaments.	1 5
1-4	35	Straight plain rubb'd & gauged red or gray Stock Work, laid in putty or Grout, & f ^t square Superficial measure	1 6
	36	Circular plain rubb'd & gauged red or gray stock Work, laid in putty or Grout & f ^t square	1 6
	37	Straight molded rubb'd & gauged red or gray Stock Work, laid in putty or Grout, & f ^t square	2
	38	Circular molded rubb'd & gauged red or gray Stockwork, laid in putty or Grout, & f ^t square	2 6
	6 of Paving w th Bricks & Tiles.		
	39	Place brick Paving laid flat & f ^t square	1 6
	40	D ^o laid edgeway & f ^t square	2
1-7	41	Gray stock brick Paving laid flat & f ^t square	1 8
	42	D ^o laid edgeway & f ^t square	2 3
3-0	43	Paving with Clay Bricks. & f ^t Yard	
3-6	44	2 ^d in Morter.	

1750

As Paid at
the Board.

2-6

1-7-0

- 17

1-1-6

- 10

- 3

- 2

43
44
45
46
47
48
49
50
51
52
53
54
55

43	Paving w. either 8 or 10 inch Tiles per yard	2 5
44	Paving w. the 12 inch Tiles & 1/4" At Hampton Court 1/4" extra for Paving	3 9

7. Of Tiling

45	Plain Tiling with good heart Laths of Oak, & 1/4"	1 6
46	Plain Tiling newript & 1/4"	16
47	Pan Tiling pointed & 1/4"	1 0 6
48	D ^o unpointed & 1/4" } 1/4" Extra at St. Court	18
49	Pan Tiling newript & pointed & 1/4"	10
50	Dutch glazed Pantiling pointed & 1/4"	1 15
51	English D ^o & Square	1 10
52	Bricklayers Diem a Foreman	3
53	Bricklayers Diem Bricklayers	3
54	Labourers & diem	2
55	Tile pins & bushell	2

1750-
as Part of
the Board.

0-1-4

0-1-6

0-0-4

0-1-0

0-
Part of
Board
1-4
1-6
0-4
1-0

White Dutch Tiles $4\frac{1}{2}$ \times $5\frac{1}{2}$ in Square

--- Squaring & setting. p^r ft. Sup^r

--- Bricknogoning. p^r Yard. Sup^r

Run of Octagon Splays p^r ft.

Labour & mortar to Laying of 3
foot Tiles. in Borders. p^r 100

Rates of Joyners Work

in Oak

No	Description	Rate
1	Sq ^r Work, the framing $1\frac{1}{2}$ in thick the Pannels $\frac{1}{2}$ in. $\text{Pr } 4 \text{ Sq}^r \text{ Sup}$	6-
2	D ^o spherid or Circular $\text{Pr } 4 \text{ Sq}^r$	12-
3	Plain Bead or o g Work, fram ^e $1\frac{1}{2}$ thick, the Pannels dram deal once cutt, at $\text{Pr } 4 \text{ Sq}^r$	6.9
4	D ^o spherid or Circular	13.6
5	Bead work the pannels raised, fram ^e $1\frac{1}{2}$ thick, the pannels Dram Deal once cutt $\text{Pr } 4 \text{ Sq}^r$	8-
6	D ^o Circular $\text{Pr } 4 \text{ yard}$	16-
7	Bead work, the fram ^e 2 in. the pannels whole deal, rais'd & stuck w th a Bead, $\text{Pr } 4 \text{ Sq}^r$	12.6
8	D ^o Circular $\text{Pr } 4$	1.5-
9	Bellection-work, w th whole deal Framing & once cutt, slit deal pannelling plain of Dram $\text{Pr } 4 \text{ Sq}^r$	8.6
10	D ^o the pannels rais'd w th a Sq ^r $\text{Pr } 4 \text{ yard}$	9.3
11	D ^o the pan ^{els} rais'd w th a Bead or o g	10-
12	D ^o w th straining frame pan ^{els} $\text{Pr } 4 \text{ Sq}^r$	11-
13	Bead & rais'd pannels Work to stairs rampt raker & kneel'd, Ralls & Stiles mostis'd thro & wedg'd on a back $\text{Pr } 4$ D ^o	8.6

Rates of Joyner's Work

in Deal	as Past at the Board 1750	
	in Oak	in Deal
6	2.9	W deal to a plinth of 1/2 Supl — 6
12	5.6	Inch D Linings — 3 1/2
		W B D° — 5
6.9	3.3	Turning 2 1/2 ballusters — 2.6
13.6	6.6	
8	3.9	
16	7.6	
12.6	6	
5	12	
8.6	4	
9.3	4.3	
10	4.9	
11	5.4	
8.6	4.3	

	in Oak	in
14 D. ^o Circular of 4 ^{sq}	17-	
15 D. ^o wrought w. th an O.G. a $\frac{1}{2}$ round on the Pannels of yard	9-	
16 D. ^o Circul. ^r of 4 ^{sq}	18-	
17 Old Wainscot pulled down	Square	1.6
18 & fitted up at 4 ^{sq}	Bead-	1.9
19	Bellection	2.6

2. Doors & Shutters.

20 Doors framed out of Stuff $1\frac{1}{2}$ thick stuck on both sides w. th a quart. ^r round plain pannels of $\frac{3}{4}$ Stuff of 4 ^{sq} single measure	13-	
21 D. ^o with rais'd pannels sq. on one side, of 4 ^{sq}	13.6	
22 Doors framed out of 2 ⁱⁿ Stuff, the pannell $1\frac{1}{2}$ rais'd on both sides, of 4 ^{sq}	18-	
23 D. ^o w. th a bead on the Pannels of 4 ^{sq}	19-	
24 Doors framed out of $2\frac{1}{2}$ Stuff, w. th a double molding, on both sides the Pannels rais'd & stuck w. th a Bead, of 4 ^{sq} single measure	1. 1.6	
* 26 Shutters 1 in thick, glued & clapt of 4 ^{sq} single measure	9-	
27 D. ^o $1\frac{1}{2}$ in thick of 4 ^{sq}	10-	
28 Shutters framed out of $1\frac{1}{2}$ inch rabitted to by flush of 4 ^{sq} meas ^{re}	11.6	
	D. ^o	

ak in Deal
 17- 8 6
 9- 4 9
 18- 9 6
 1.6 1
 1.9 1.3
 2.6 2

To be measured into the
 work allowing 6 yard
 Extra. according to the
 nature of the work,
 The Circulars

2½ Mahogany doors Veneered
 sunk 098 raised wth Astagal of 2½ very fine g

3- 6.5
 3.6 6.9
 18- 9
 9- 9.9
 1.6 12.6
 9- 4.6
 0. 5
 1.6 5.9

*
 N^o 25 Grooving for shelves
 4 foot run. ----- 1½

	in Oak	in 2
28 D. ^o out of 2 in Stuff $\frac{1}{2}$ yd. $\frac{1}{2}$ f. meas. ^{re}	15	
29 Shutters framed w. th 1 $\frac{1}{2}$ in Stuff plain bead pannels of the same thickness flush on the back of yard	13.6	
30 D. ^o out of 2 in Stuff $\frac{1}{2}$ yd.	18	
31 Shutters framed out of 1 $\frac{1}{2}$ in Stuff w. th a Bead & raised pannels wrought w. th a Bead, $\frac{1}{2}$ yd.	13.6	
32 D. ^o out of 2 in Stuff $\frac{1}{2}$ yd. f. measure	18	
33 Shutters framed out of 2 in Stuff w. th a double Molding, the pannels stuck w. th a Bead, the Back plain bead, $\frac{1}{2}$ yd. $\frac{1}{2}$ f. measure	1	
35 Plain Window lining & behind Shutt. ^{rs} w. th 2 in Stuff $\frac{1}{2}$ yd. $\frac{1}{2}$ f. sup.	4	
36 D. ^o with 3 in Stuff $\frac{1}{2}$ yd.	5	
37 D. ^o with 1 inch Stuff, $\frac{1}{2}$ yd.	6	
38 Window Boards with a Molding in the Front 3 in thick $\frac{1}{2}$ yd. $\frac{1}{2}$ f.	6	
39 D. ^o 1 in thick	6.6	
40 D. ^o 1 $\frac{1}{2}$ thick	8.6	
41 Window Seat Backs & Ends, $\frac{1}{2}$ yd. work of yard	6	
42 D. ^o plain Bead $\frac{1}{2}$ yd.	6.9	
43 D. ^o Bead & raised pannels $\frac{1}{2}$ yd.	8	
44 D. ^o with a double Molding & Bead on the pan. ^{ls} $\frac{1}{2}$ yd. $\frac{1}{2}$ f. super	12.6	

k.	in Deal
15-	7.6
13.6	6.3
18-	8.6
13.6	6.3
18-	8.6
—	10
4-	2
5-	2.6
6-	3
6.	3
6.6	3.3
8.6	3.10
6-	3
6.9	3.3
8-	3.9
12.6	6

3 Architraves & Cornices

- 45 Straight or Italian Mouldings }
Architraves Surfaces & other mouldings }
of the same nature measured upright } 2.9
at $\text{ff. } 5\text{q. } 2 \text{ Sup. } \text{L.}$
- 46 Plain Cornices coved or square, }
measured perpendicular on the }
face in depth or width, $\text{ff. } 5\text{q.}$ } 2.9
- 47 The cutting of a Dentil $\text{ff. } 1 \text{ foot}$ }
run. & measure } 4
- 48 Plain Modillion Cornice, dentil }
not cut, measured perpendicular }
on the face in depth, $\text{ff. } 5\text{q. } 2 \text{ Sup. } \text{L.}$ } 4.6
- 49 Circular Work, double price.

4 Sash Frames, Sashes, Lines, & Pullies.

- 50 Sash frames box'd wth Sashes out of }
3 inth Stuff wth Lines & Pullies of }
the best Sort at $\text{ff. } \text{Square}$ } 3
- 51 D^o out of 2 1/2 inth Stuff $\text{ff. } 5\text{q. } 2$ } 2.6
- 52 D^o out of 2 inth, $\text{ff. } 5\text{q. } 2$ } 2
- 53 D^o out of 1 1/2 inth Stuff }
 $\text{ff. } \text{Square}$ } 1.6
- 54 Circular Work, double price.

2.9 . 1.4½
 2.9 . 1.4½
 .4 . 3
 4.6 . 2

3-	2	Paper sashes for Dr Supl	3
		2 nd blank sash & frame	1" 3
2.6	1.9	at 2 nd House, very large Sq 2½	2" 3
		Do with mahogany sashes	3" 3
2-	1.6	Crimson Silk sash line of Oz	2" 4
		Green Do	2" 0
1.6	1.3	2½ Mahogany Astragal sashes	2" 6
		4 th Domical sky light	6" 0

	in Oak in.
55 Sashes only without frames lines or Pullies 3 thick $\frac{1}{2}$ ft. $\frac{1}{2}$ Sup ^l	1.6
56 D ^o 2 $\frac{1}{2}$ ft. $\frac{1}{2}$ Sup ^r	1.3
57 D ^o 2 ft. $\frac{1}{2}$ Sup ^r	1
58 D ^o 1 $\frac{1}{2}$ ft. $\frac{1}{2}$ Sup ^r	9
59 Oak or Box Pullies 3 diam. $\frac{5}{8}$ thick, w th Steel turn'd pins and brass Collar, at $\frac{1}{2}$ dozen	9
60 D ^o 2 $\frac{1}{2}$ diam. $\frac{1}{2}$ Doz	7.6
61 Lines of the best sort $\frac{1}{2}$ yard	2

5. Pillasters & Columns.

62 Open Pillasters with an O.G. & plain Pannels $\frac{1}{2}$ ft. Sup ^l	1.6
63 D ^o the pannels rais'd $\frac{1}{2}$ ft. $\frac{1}{2}$ Sup ^r	1.9
64 D ^o the pannels rais'd & stuck w th a Bead, $\frac{1}{2}$ ft.	2
65 Plain Pillasters 1 $\frac{1}{2}$ thick, not diminished $\frac{1}{2}$ ft. $\frac{1}{2}$ Sup ^r	1.9
66 D ^o fluted, $\frac{1}{2}$ ft. $\frac{1}{2}$ Sup ^l	2.6
67 Plain Pillasters 1 $\frac{1}{2}$ thick dimin ^{ish'd} $\frac{1}{2}$ ft. $\frac{1}{2}$ Sup ^r	2
68 D ^o fluted $\frac{1}{2}$ ft. $\frac{1}{2}$ Sup ^r	2.6
69 Plain Pillast. 2 $\frac{1}{2}$ thick not dim ^{ish'd}	2.4
70 D ^o fluted $\frac{1}{2}$ ft. $\frac{1}{2}$ Sup ^r	3

Take in Deal

(21)

1.6 . 1.3

1.3 . 1

1 . 9

9 . 7

9

76

2

1.6 . 9

1.9 . 10 $\frac{1}{2}$

2 . 1

1.9 . 1.2

2.6 . 1.6

2 . 1.4

2.8 . 1.9

2.4 . 1.6

3 . 2

	in Oak	in
71 Plain Pillasters 2 thick diminish'd of 1/2	2.6	
72 D ^o fluted of 1/2	3.6	
73 Plain Pillasters 2 1/2 thick dim ^d of 1 square	3	
74 D ^o fluted of D ^o	4	
75 Pillasters for Stair Cases fluted w th their Bases & Necks, carv- ing excepted, at each	5	
76 D ^o w th Carving at each	6.6	
77 Plain diminish'd Columns glew'd out of 2 1/2 Stuff & turn'd with their Bases & Necks of 1/2	4.6	
78 D ^o fluted of 1/2	5	

6 Capitals.

79 All Wood glew'd & fitted for the Carver in Capital and other work to be carved, to be measured solid, of 1/2	10
--	----

7. Shelves.

80 Skirting to be as square Work	
-------------------------------------	--

Oak in Deal

(22)

2.6	1.8
3.6	2.3
3	2
4	2.6
5	4
6.6	5
4.6	2.6
5	3
10	5

Carving Corinthian Capitals } 2.50 -
1:7¹/₂ high 1:6¹/₂ dia of face

	in Oak	in
81 Shelves ⁱⁿ $\frac{3}{4}$ thick on one side, w th fillets brackets or other Bearers, & yard, 1 st yard	6	6
82 D ^o 1 inch thick & 9 th Sq ^r	7	6
83 D ^o 1 $\frac{1}{2}$ thick & d ^o	8	6
84 Battins & pins & f. run		6
85 Shelves to be once measured including Bearers & Brackets		

Wainscot Planks & Boards

86 4 inch plank at f. 9 th sup ^l	1	4
87 3 $\frac{1}{2}$ inch d ^o	1	2
88 3 inch d ^o	1	
89 2 $\frac{1}{2}$ inch d ^o		10
90 2 $\frac{1}{4}$ inch Wainsc. Board, f. 9 th sup ^l	9	
91 2 inch d ^o		8
92 1 $\frac{3}{4}$ inch d ^o		7
93 1 $\frac{1}{2}$ inch d ^o		6
94 1 $\frac{1}{4}$ inch d ^o		5
95 1 inch d ^o		4
96 $\frac{3}{4}$ inch d ^o		3
97 $\frac{1}{2}$ inch d ^o		2
98 $\frac{1}{4}$ inch d ^o		4

Wak in Deal

(23)

6.6 . 4

7.6 . 5

8.6 . 6

. 6 . 4

1.4

1.2

1.0

9

8

7

6

5

4

3

2

1.4

9. Deals.

99	14 f ^t 2 in yellow deals, each	2.3	2.6
100	D ^o white, each	2.2	2.
101	14 f ^t 1½ in yellow deals, each	1.10	2.
102	D ^o white	1.9	2.6
103	12 f ^t 2 in yellow deals, each	2	2.3
104	D ^o white	1.11	2.
105	12 f ^t 1½ in yellow deals, each	1.9	2.
106	D ^o white	1.8	1.1
107	12 f ^t 1¼ in yellow Deals, each	1.8	1.1
108	D ^o white	1.7	1.1
109	10 f ^t 2½ in yellow deals, each	2.3	2.1
110	D ^o white	2.2	2.1
111	10 f ^t 2¼ in yellow deals, each	2.2	2.1
112	D ^o white	2.1	2.
113	10 f ^t 2 in yellow deals each	1.8	1.1
114	D ^o white	1.7	1.1
115	10 f ^t 1½ in yellow deals, each	1.6	1.1
116	D ^o white	1.5	1.1
117	10 f ^t 1¼ in yellow deals, each	1.6	1.1
118	D ^o white	1.5	1.1
119	A Foreman of day	3	
120	A Joyner of day	2.9	

2.3 2.6 *Slit Deals.*

2.2 2.5

1.10 2.1

1.9 2.0

2. 2.3

1.11 2.2

1.9 2.0

1.8 1.11

1.8 1.11

1.7 1.10

2.3 2.6

2.2 2.5

2.2 2.5

2.1 2.4

1.8 1.11

1.7 1.10

1.6 1.9

1.5 1.8

1.6 1.9

1.5 1.8

3 -

2 9

Rates⁽²⁵⁾ of Ironmonger's Goods.

1	Glaziers Sprigs, at $\text{£} m$ _____	10
2	Large Tacks, at $\text{£} m$ _____	1
3	Inch battin Brads, at $\text{£} m$ _____	1 2
4	Inch & $\frac{1}{2}$ d ^o . at $\text{£} m$ _____	1 6
5	Twiney d ^o . at $\text{£} m$ _____	2
6	2 ^o . rose head Nails, at $\text{£} m$ _____	1 4
7	3 ^o . d ^o _____	2
8	4 ^o . d ^o _____	3
9	2 ^o . round head Nails at $\text{£} m$ _____	2
10	3 ^o . d ^o _____	2 6
11	4 ^o . d ^o _____	3 6
12	6 ^o . d ^o _____	5
13	8 ^o . d ^o _____	6
14	Clout Nails the same _____	
14	London forg'd Nails $\text{£} \text{hun}$ _____	2 6
15	Plumbers nails $\text{£} d^o$ _____	1 6
16	Middle Size d ^o . $\text{£} d^o$ _____	2
17	Large d ^o . $\text{£} d^o$ _____	3
18	Filed head Rivets, $\text{£} \text{Gross}$ _____	3
19	6. 10 & 20 Clasphead Nails, 30 10 & floor Brads, Spikes, holdfasts & Wall hooks, at $\text{£} lb$ _____	5
	Lancashire Ground Hinges.	
20	Dovetails N ^o 1) _____	3
21	2) at $\text{£} pair$ _____	4
22	3) _____	6

D^o

23
24
25
26
27
28
29
30

31
32
33
34
35

36
37
38
39
40
41

42
43
44
45
46

47
48
49
50

51
52
53
54
55

23	D ^o Side hinges, n ^o 1	4
24	2	6
25	3	8
26	4 at pair	10
27	5	1
28	6	1.4
29	7	2
30	8	2.6

Filed joints d^o

31	5 inch Lath at pair	1	<i>of Rivings</i>
32	6	1.6	<i>or L^o</i>
33	7	1.9	<i>more 6</i>
34	8	2.3	
35	9	3.3	1.9
36	10	4	1
37	11	5	1.3
38	12	6	1.6
39	13	7	1.6
40	14	8.6	1.8
41	15	9	1.9
42	16	10	2
43	17	11.6	2.3
44	18	12.6	2.6
45	19	13.6	2.9
46	20	15	3
47	21	16	3.3
48	22	17.6	3.6
49	23	18.6	4
50	24	1	5
51	Cupboard or Lock hing. n ^o 1		1.6
52	2		2.6
53	3		3.6
54	Brass press hinges & pair		5
55	Short Bolts		1 ea:
56	Long d ^o		2.6

57	Inch Woodscrews, each	1
58	Inch & $\frac{1}{2}$ d. ^o each	1 $\frac{1}{2}$
59	2 inch d. ^o each	2
60	3 inch d. ^o each	3

Smooth filed Hinges

61	N ^o 1 at pp ^t	9
62	2	1. 3
63	3	1. 9
64	4	2. 9
65	5	3. 3
66	6	4
67	7	5. 6
68	8	6. 6
69	9	7. 6

70	Brass hinges w th Sliding plates, viz	
71	9 inch, at pp ^t	12. 6
72	12 in	18
73	14 in	1. 15

D^o brass Dove Tail Hinges,

74	N ^o 1. 4 $\frac{1}{2}$ in joints at pp ^t pair	14
75	2. 5	18
76	3. 5 $\frac{1}{2}$	1. 2
77	4. 6	1. 8
78	5. 6 $\frac{1}{2}$	1. 12. 6
79	6. 7	1. 15

80 Stock & Plate Locks from 8ⁱⁿ to 13 in,

81	N ^o 1, at each	1. 2
82	2	1. 6
83	3	2. 6
84	4	3. 6
85	5	3. 6
86	6	4
87	7	

88

89

90

91

92

93

94

95

96

97

98

99

100

101

102

103

104

105

106

107

108

109

110

111

112

113

114

88 Keys extra. y for 2^o each — . 1.6
 89 9/16 Staples for 2^o at each — . 4

Stock & Plate Locks, iron barr
 double dead shoot.

90 10 inch. at each — 3
 91 11 — 4
 92 12 — 5
 93 13 — 6
 94 14 — 7
 95 15 — 8
 96 16 — 9

97 Large iron box Staples, each — 1.6
 98 Keys extra, each — 2

Iron Rim Locks, best work, Wards round,
 in

99 4 at each — 5
 100 5 — 6
 101 6 — 8.6
 102 7 — 10.6
 103 8 — 12.6
 104 9 — 14
 105 10 — 16
 106 11 — 18
 107 12 — 18
 108 13 — 1
 109 14 — 1.2

110 Keys Extra. at each — 2.6

Brass cased Locks,

111 6 in. at each — 12
 112 7 — 15
 113 8 — 1
 114 9 — 1.5

115
116
117
118
119
120
121
122
123
124
125
126
127
128
129
130
131
132
133
134
135
136

Brass cased Locks wth invisible
Screws.

115	6 int. at each	13
116	7	16
117	8	1 2
118	9	1 7
119	10	1 10
120	Cross warded Cupboard Locks, each	8
121	Swallow Core d ^o at 1 2 each	1 2
122	Double X warded d ^o at each	1 8
123	D ^o TL pollisht key, each	2 6
124	D ^o wards round, each	4
125	D ^o Extra. each	6
126	Padlocks N ^o 1 at each	8
127	2	1
128	3	1 6
129	4	2
130	Bridge ward d ^o	2 6
131	D ^o larger & secret	4
132	D ^o very large & secret	5
133	Cross garnets N ^o 1. p pair	6
134	2	8
135	3	1
136	4	1 6
	Hooks & hinges d ^o	

137

138

139

140

141

142

143

144

145

146

147

148

149

150

151

152

153

154

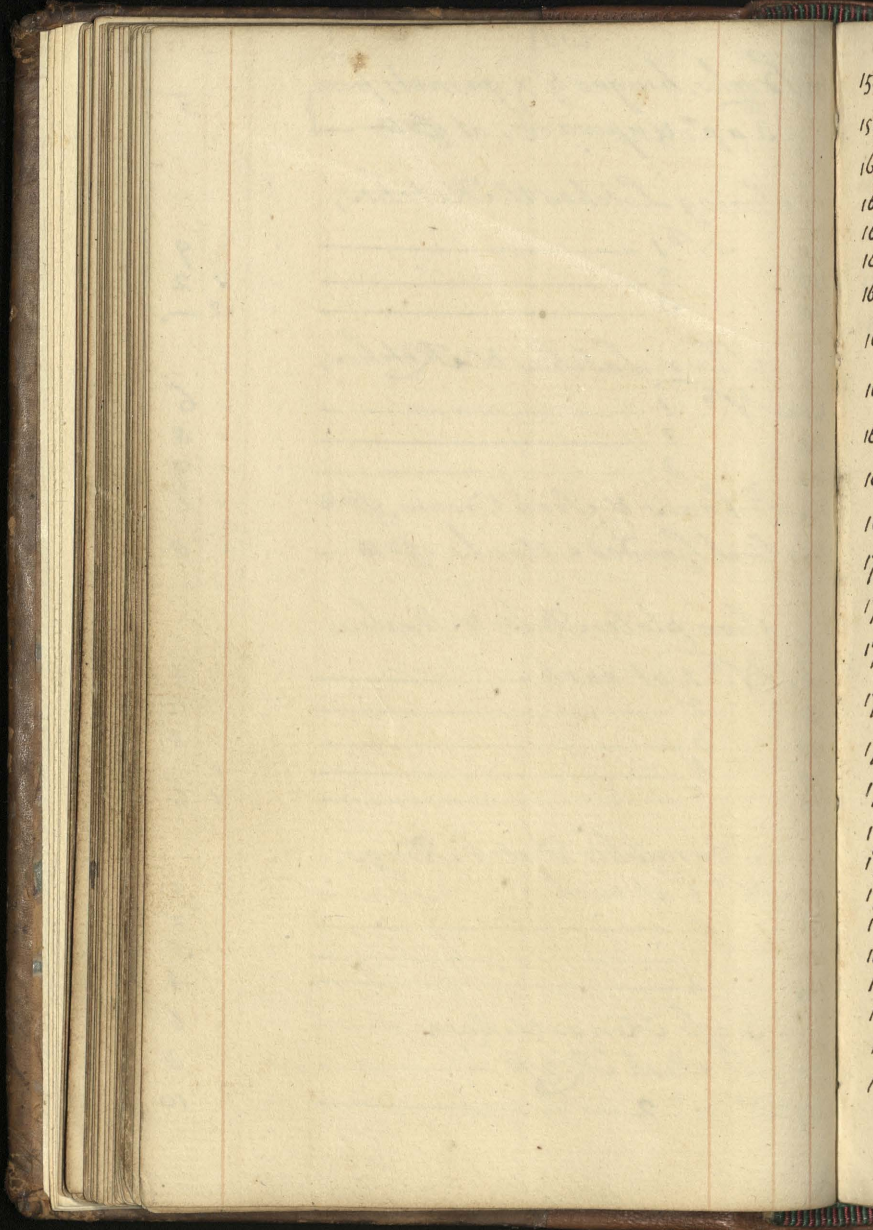
155

156

157

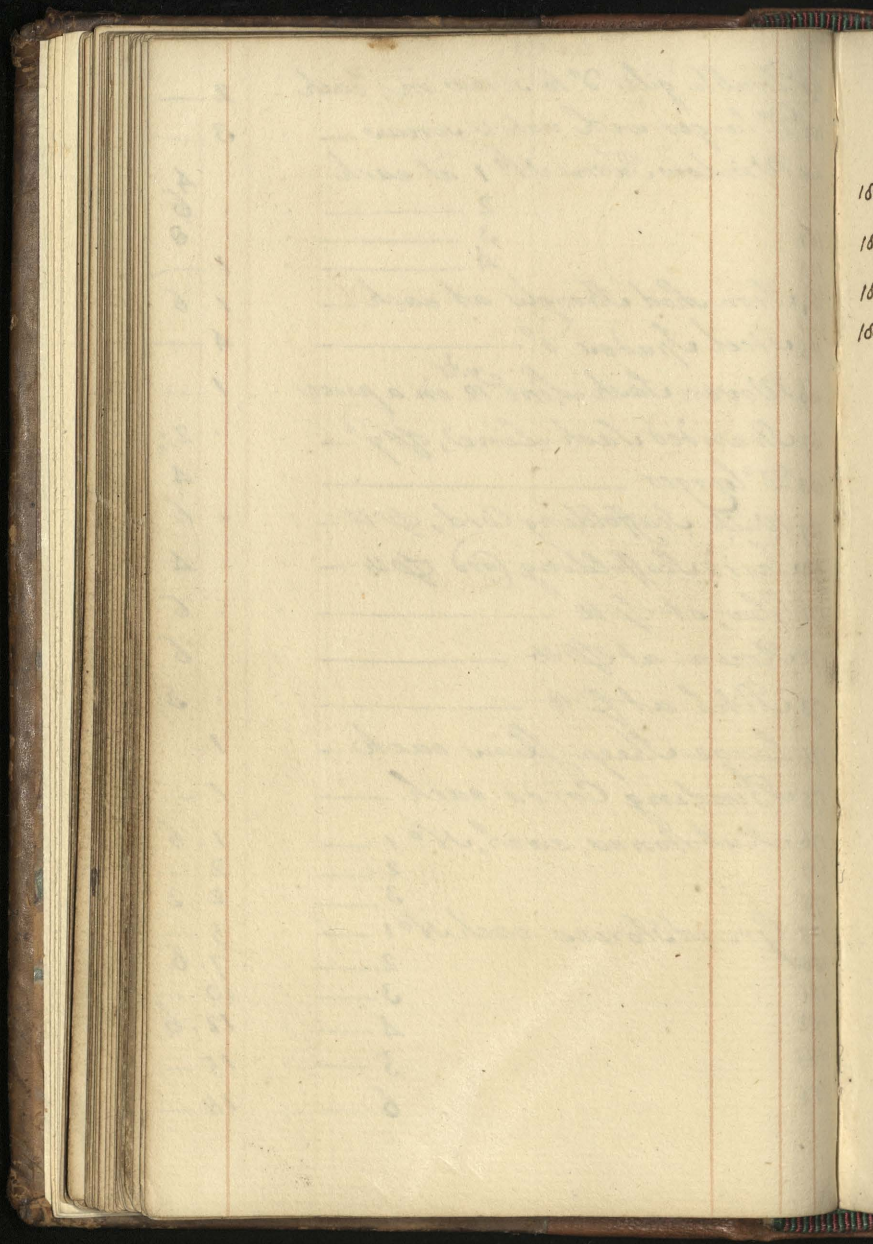
158

137	Books, hinges & garnets from 3 a p. & upwards, at $\text{£} 6$	5
	Spring Latches & Ketches,	
138	N ^o 1	9
139	2	1 2
140	3	2
	Plain Latches & Ketches,	
141	N ^o 1	6
142	2	8
143	3	9
144	Pickaxes & Iron Crows, $\text{£} 6$	6
145	Steel headed Mauls, $\text{£} 6$	8
	Iron plate Bolts & Staples,	
146	N ^o 1 at each	4
147	2	6
148	3	8
149	4	1 6
150	5	1 6
	Burnight Dutch Rings,	
151	N ^o 1 at each	1 1/2
152	2	2
153	3	3
154	4	4
155	Brass Rings & Roses	6
156	Gilt Lash Rings	8
157	D ^o n ^o 2	10



158
159
160
161
162
163
164
165
166
167
168
169
170
171
172
173
174
175
176
177
178
179
180

158	Double gilt D ^o to screw in, each	2
159	D ^o larger with nuts & screws	3
160	Window Turns N ^o 1 at each	4
161	2	6
162	3	8
163	4	1
164	Iron shod Shovels at each	1. 6
165	Steel Spades D ^o	4
166	Woven Sash Line ^{y. d.} 12 in a piece	1
167	Stranded Sash Line, $\frac{1}{4}$ y	2 $\frac{1}{2}$
168	D ^o larger	4
169	White Scaffolding Cord, $\frac{1}{4}$ lb	6
170	Tarr'd Scaffolding Cord $\frac{1}{4}$ lb	4
171	Glew, at $\frac{1}{4}$ lb	6
172	Rozin at $\frac{1}{4}$ lb	6
173	Pitch at $\frac{1}{4}$ lb	3
174	Large Sheep skins each	1
175	Binding Cords each	1
176	Rubstones, each, N ^o 1	1. 6
177	2	2
178	3	2. 3
179	Grindstones each N ^o 1	5
180	2	7. 6
181	3	10
182	4	12. 6
183	5	15
184	6	18



Box of Wainscot Pulleys wth
brass Collars & turned iron pins

185	2 in Diameter, each	3
186	2 ½ in	4
187	3 in	6
188	3 ½ in	8

Faint, illegible handwriting in the upper right section of the page, possibly bleed-through from the reverse side.

10040

[Faint, illegible handwriting]

[Faint, illegible handwriting]

[Faint, illegible handwriting]

[Faint, illegible handwriting]

[Faint, illegible handwriting]

[Faint, illegible handwriting]

[Faint, illegible handwriting]

[Faint, illegible handwriting]

1750 -

As Past at
the Board
L. S. D.

N
1
2
3
4
5
6
7
8
9
10
11
12
13

Rates of Plasterer's Work, Materials, &c

N ^o 1	Lathing & Plastering w th Firr Laths not set at 4y	7
2	Lathing & plastering 4y	10
3	D ^o with Heart Laths of Oak 4y	1 1
4	D ^o w th 3 coats of Stuff & Firr Laths scratcht & floated 4y	1 1
5	D ^o w th Oak Laths 4 yard	1. 2
6	Hard finishing on Lathing & Plastering floated, 4y	2 6
7	D ^o w th 3 Coats floated & hrowld smooth 4 yard	2 9
8	D ^o on rendering outside & floated	1 9
9	D ^o with 3 Coats floated & hrowld smooth 4 yard	2
10	Rendering common 4y	4
11	D ^o w th 3 Coats floated 4y	6
12	Washing stopping & whitening & firing 4y	1 1/4
13	Colouring 4y	1 1/2
	Grey Plaster floors 4 5 ²	2 15
	Red D ^o	4 0

Plain

		1750	as Past at of Board.	
	L.S.D			
Com ⁿ Rendering & White	0.0.4½			14
Floated D ^o & White	0.0.5½		0.6	---
Com ⁿ Lath & Plastering	} 0.0.9			15
& White				
Floated D ^o & White	0.1.0			
Stucco on Walls	0.1.5	Car ^d 2 ^o ad 2		16
D ^o on Laths	0.1.8			
Floated Rendering for	} 0.0.5			17
Hangings				
Run of Plain Moulding	} 0.0.3			18
of f ^t				
Com ⁿ Rendering	0.0.3½			19
Com ⁿ Lath & Plaster	0.0.8			20
Counter Ceiling of Sq ⁿ			6.0	21
7 Sup Corinth Cornice fully carved & gyp ^s (imad)	2.3			23
Lomical 3 mem enriched 1.4 four D ^o at	1.6			24
D ^o 5 mem ^o enriched	1.9			24
Griffen frieze & rich foliage	4			25
				26
				27

- 14 Plain Architraves & Cornices
wth hard Lime & Hair finish-
ing, $\text{ff. } 19^{\text{r}} \text{ sup.}$ 6
- 15 Stucco Work wth bead & raised
Panels & all plain freezes
at $\text{ff. } 19^{\text{r}} \text{ sup.}$ 3
- 16 Large & middle size plain
Cornices done wth Lime &
hair, $\text{ff. } 19^{\text{r}} \text{ sup.}$ 6
- 17 Small Cornices & plain Ceiling
Moldings done d^o. $\text{ff. } 19^{\text{r}} \text{ sup.}$ 6
- 18 Dentils, Eggs, & Anchors, Laces
& such like Ornaments by
the Foot run. $\text{ff. } 19^{\text{r}} \text{ sup.}$ 1 1/2
- 19 Carv'd Modillions great or small
- 20 Plain D^o great or small
- 22 Roses between Modillions
great or small at each
- 23 Quoins to Groins $\text{ff. } 19^{\text{r}} \text{ sup.}$ 3
- 21 Groins, $\text{ff. } 19^{\text{r}} \text{ run.}$
- 24 Cornices pointed $\text{ff. } 19^{\text{r}} \text{ Room 11}$ $\text{ff. } 19^{\text{r}} \text{ Room 2}$
- 25 Barge Course lathed & plas-
ter'd in Stucco, $\text{ff. } 19^{\text{r}} \text{ run.}$ 4
- 26 D^o in Lime & hair 3
- 27 Chimney Backs plaster'd wth
2 Coats & twice blacked 1

30
rest at
hard.
0.6
ad 2
6.0
2.3
1.6
1.9
4
9

1750-

as Past at
the Board

28

29

0 0.6 -30

0 0.9 -

31

32

1.3 -33

34

1.6 -35

36

37

38

39

0 3.0 40

0 2.0 41

42

43

1.0 -44

45

28	Sack frames apt round with Lime & hair & hyle heads, each	1. 6
29	Stone Lights pointed, each	8
30	Course & fine Lime & hair toge- course ther, $\text{\textit{p}}$ Rod fine	6 9
31	Board finishing $\text{\textit{p}}$ Rod	1. 1
32	Oak heart Laths $\text{\textit{p}}$ bundle	2. 3
33	Firr D ^o $\text{\textit{p}}$ D ^o	1. 4
34	Common Firr Laths $\text{\textit{p}}$ D ^o	1
35	Lath Nails $\text{\textit{p}}$ m, weighing $2\frac{1}{2}$	1. 4
36	Plaster Burnt beaten & sifted $\text{\textit{p}}$ pound	2
37	Whitening $\text{\textit{p}}$ Dozen Balls	3
38	Double Size $\text{\textit{p}}$ gallon	8
39	fine Blackening $\text{\textit{p}}$ lb	2. $\frac{1}{2}$
40	A Plasterer $\text{\textit{p}}$ diem	2. 10
41	A Labourer $\text{\textit{p}}$ diem	1. 9
42	All Holdings plain str. $\text{\textit{p}}$ ft sup.	6
43	Circular D ^o	1
44	Inricht strait	1
45	Circular	2

At
Windsor

Brass Rods at $\text{p}^{\text{r}} \text{L}^{\text{d}}$ 16
Polishing d^{s} each - 12

No
14
4
26
8
10
3
9
4
26
5
16
6

Black⁽³⁷⁾
Smith's Work &c.

At 2.00 4 8 10 9 2.6 1.6	No 1 2 3 4 5 6	All Ironwork hammer except Casement at 4 pound Casements for Windows, cross Window Barr, filed & work of the like nature, at 6 lbs Circular Iron Doors & Shutt ^{rs} at 7 lbs Cleaning the Garden Locks, each New keys for the Gard ⁿ Locky, ea. All other Keys _____ Morticed dovetail hinges Steel Centers & Shutter Barrs & Springs & L Copper nails & L & Coppers Bright filed Spits & L allow for old Iron & W ^t	4 6 7 11 9 2 16 16 10 2 1/2 8 12
---	----------------------------------	---	---

Painter's Work at Windsor

at Hampton Court, as Past at the Board. 1750 —

3 Times ----- at 7 if sanded at 3
 2. 2° ----- 4½ of 5 sanded at 3

Lash Fram. 3 times. 14

Lash Sq^r. 2° ----- 1½

Lash Fram. twice ----- 9

Lash Sq^r. 2° ----- 1½

Window Lights 3 times 4

2° twice ----- 3

Casements twice ----- 3½

Barrs ----- 1

Painting once done } 3 & 3½ sanded at 3
 of 2° } 3

3 Times of finish. } 10.

Green ----- 1

No

	10		1
	7½		2
	8		3
	6		4
1	1		5
	9		6
1	1		7
	9		8
	9		9
1	3		10
	1½		11
	10		12
	1		13
	6		14
	4		15
	4		16
	1		17
	1½		18

Painter's Works, &c.

10	1 Pearl Colour thrice done in Oyl, $\frac{1}{2}$ yard	10
7 $\frac{1}{2}$	2 D. ^o twice done	7 $\frac{1}{2}$
8	3 Wainscot Stone, Lead & Cream Colour, thrice done in oyl, $\frac{1}{2}$ yd	9
6	4 D. ^o twice done	6 $\frac{3}{4}$
	5 Green thrice done in oyl, $\frac{1}{2}$ yd	1
9	6 D. ^o twice done	10
	7 Marble, Walnut Tree &c thrice done in oyl, $\frac{1}{2}$ yd	2 6
9	8 Varnishing Wainscot $\frac{1}{2}$ yd	9
	9 Gilding, $\frac{1}{2}$ of Superficial D. ^o with Double Gold	4 6
3	10 Sash frames thrice done on one side, each	1 3
1 $\frac{1}{2}$	11 Sash Squares D. ^o	1 $\frac{1}{2}$
10	12 Sash frames twice done on one side, each	10
1	13 Sash Squares D. ^o	1
6	14 Window Lights thrice done on one side, each	6
4	15 D. ^o twice done	4
4	16 Casements on both sides, each	4
1	17 Window bars Shutter bars, &c	1
1 $\frac{1}{2}$	18 Cleaning old Painting $\frac{1}{2}$ yd	1 $\frac{1}{2}$

Hampton Court

1755

at self
Dig Lead of Ton
at

L 15

1713

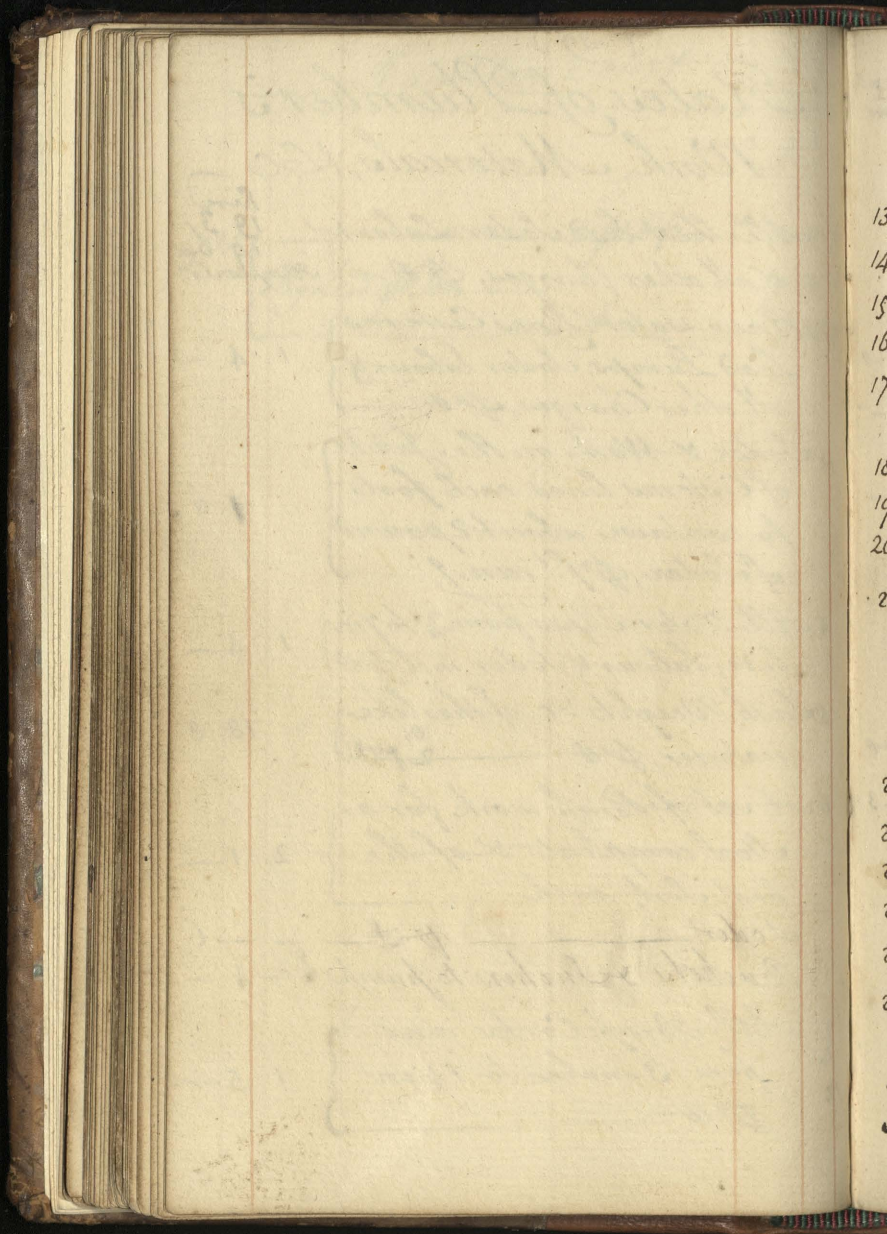
1715 6

1763

Rates of Plumber's Work, Materials, &c

Rev
19 3/4
19. bat
Hampton Co. t

1	All Sheet Lead, Soder Labour & all other charges, $\text{£} 0$ —	
2	Rain-water Pipes Cisterns Lead Pumps, Soder Labour & all other Charges, $\text{£} 0$ —	1. 4
3	Soder & Work on the Joints of Cisterns lined, each foot to contain about 2 pound of Soder, $\text{£} 1$ run. 1	1. 6
4	All Water Pipes from $\frac{3}{4}$ to 7 in bore, Labour & Soder incl $\text{£} 0$	1. 4
5	Lash Weights &c. of the like nature, $\text{£} 0$ — $\frac{2}{2}$ per lb	18. 8
6	A set of Brass work for a Stool compleat & of the best Sort, each	2. 1
	Soder $\text{£} 1$ —	1. 6
	Buckets & Suckers to pumps Ea	1. —
7 10 12	All Brass Cocks and from 3 inches to $1\frac{1}{2}$ in $\text{£} 16$	1. 5



13
14
15
16
17
18
19
20
21
22
23
24
25
26
27
28
29
30

Cocks & Pipes, Soder, setting on
& all Charges included from
in $1\frac{1}{2}$ to $\frac{1}{2}$ an Inch, viz -

13	$1\frac{1}{2}$ at 6. 0. Setting on 2. 0 each	8
14	$1\frac{1}{4}$ at 4. 0 Setting on 1. 6	5. 6
15	1 at 3. 0 Setting on 1. 3	4. 3
16	$\frac{3}{4}$ at 2. 6. Setting on 1. 0	3. 6
17	$\frac{1}{2}$ inch 2. 0 Setting on 1. 0	3
	If no Pipes are used then	
18	deduct for small Pipes 0. 4 each	
19	for middle D ^o 0. 6	
20	for large D ^o 0. 9	
21	All Stop Cocks to $1\frac{1}{2}$ in. ft	1. 5

Stop Cocks, Soder Setting on.
& all other Charges included
from $1\frac{1}{2}$ inch to $\frac{1}{2}$ Inch viz.

23	$1\frac{1}{2}$ inch 6. 0. Setting on 2. 6 each	8. 6
24	$1\frac{1}{4}$ inch 4. 0. D ^o 2. 0	6
25	1 inch 3. 0. D ^o 1. 10	4. 10
26	$\frac{3}{4}$ in 2. 6. D ^o 1. 6	4
27	$\frac{1}{2}$ in 2. 0 D ^o 1. 0	3
28	Ball Cocks, the Ball 6 in ^s the Cock 1 inch, each	10. 6
29	D ^o the Ball 5 in ^s . Cock $\frac{3}{4}$ in	8. 6
30	D ^o the Ball 4 in ^s . Cock $\frac{1}{2}$ inch	7. 6

1750

as Paid at
the Board

0-3-11

- 2 -

- 2 -

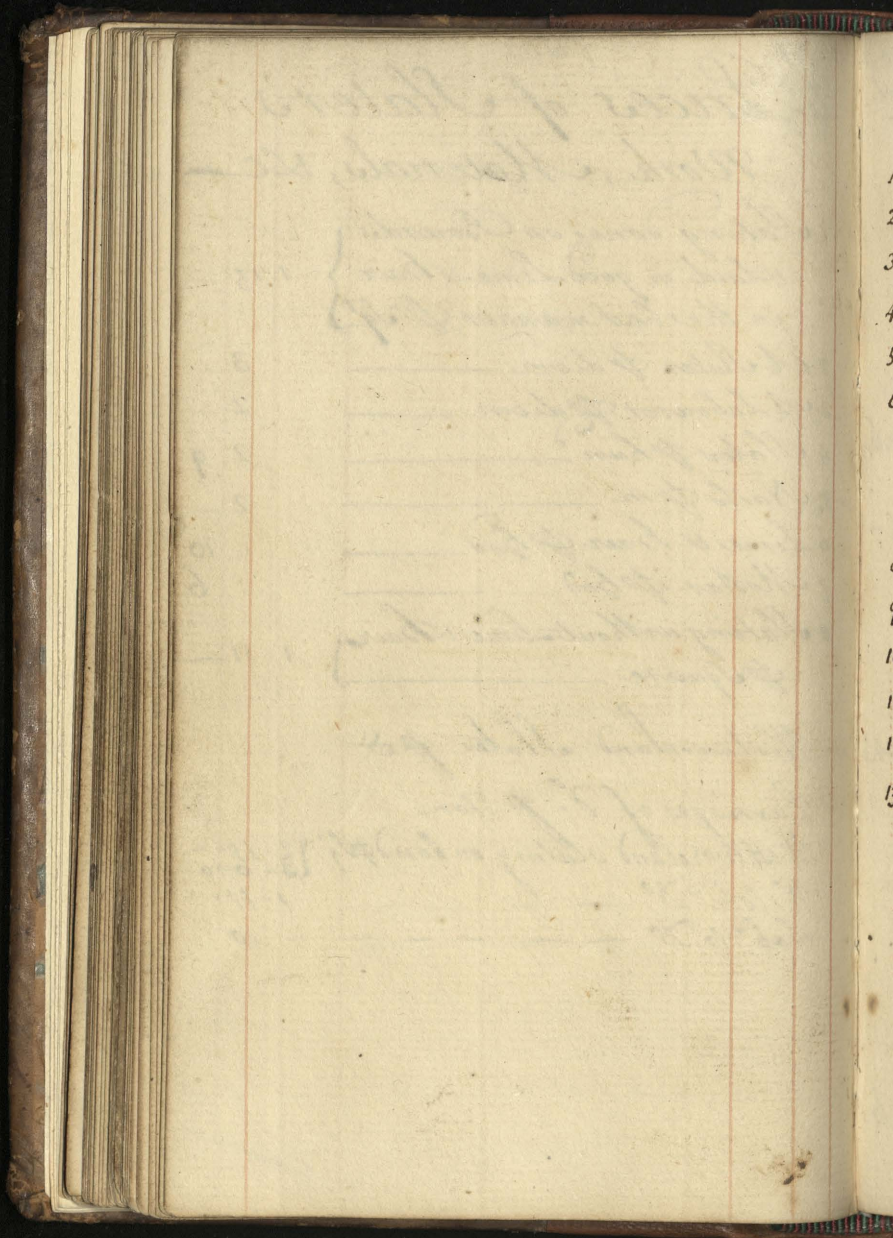
- 4 - 0

- 1 - 3

Prices of Slater's Work, Materials, &c

	1 Slating done on Boards & laid in good Lime & Hair in the best manner, & Sq	1. 15
3. 0	2 A Slater & diem	3
2 -	3 A Labourer & diem	2
	4 Slates & hun	2 9
2 -	5 Nails & m	2
	6 Lime & hair & hod	10
	7 Mortar & hod	6
	8 Slating without Lime & Hair & Square	1. 11

4. 0	- Westmoreland Slates & d	
1. 3	Carriage of d - of Ton	
	Westmoreland Slating on board & sq	2. 15
	Welsh do	3. 0
	Lab to do	1. 11
		10



Prices of Glaziers Work

1	Crown Glass $\text{\textit{ff}}^t$	1	$\frac{4}{4}$
2	New Leading $\text{\textit{ff}}^t$		3
3	Glass repaired $\text{\textit{ff}}^t$		$\frac{1}{2}$
4	English in Garden frames $\text{\textit{ff}}^t$	}	6
5	English $\text{\textit{ff}}^t$		
6	Puttying Garden frames, running measure, $\text{\textit{ff}}^t$	}	$0\frac{1}{2}$
7	Puttying Sashes on both sides, Outside		
8	Puttying Sashes on both sides, Inside		$0\frac{3}{4}$
9	Waved Plates $\text{\textit{ff}}^t$	2	6
10	Plate Glass, Diamond cut, $\text{\textit{ff}}^t$	8	0
11	Quarries each		1
12	Cleaning $\text{\textit{ff}}$ Window		6
13	Puttying Casements $\text{\textit{ff}}^t$ running		$0\frac{3}{4}$

as Part of
the Board
1750 -

For Carriage

Ragg Stone of Ton 5 -

Clinkers . of M - 3

. 3. 6 - 4

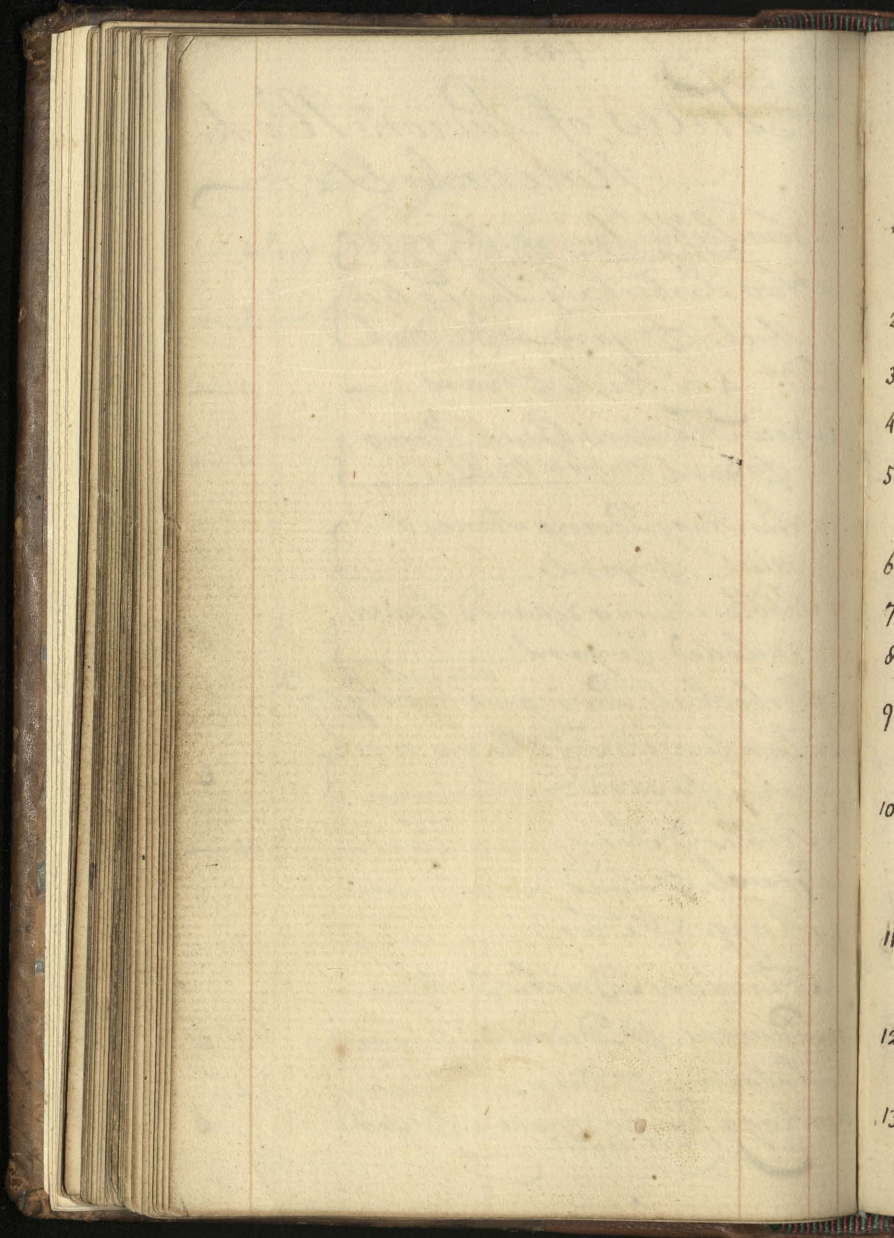
2 - 5

. 4 - 8

. 6 - 1

Prices of Paviers Work Materials &c

1	New Pebble Paving, \pounds yard Materials & Workmanship	4
2	New Purbeck Sq ^r Paving 6 in. thick, \pounds yard Mat ^l & Work	5
3	D ^o 4 in. thick \pounds yard	4
3.6	4 New Flanders Brick Paving \pounds yard Mat ^l & Work	3
2	5 New Ragg Paving Stone & Work, \pounds yard	1. 6
	6 Pebble Paving repair'd, Gravel included, \pounds yard	6
	7 Purbeck. Sq ^r Paving work only \pounds yd. & gravel	6
4	8 Flanders Brick Paving work only, \pounds yard	6
	9 Pebbles \pounds Tun	18
	10 Gravel, \pounds Load	2. 6
	11 Ragg, \pounds Tun	7
	12 Flanders Bricks \pounds m	1
	13 Paviers, \pounds Diem	2. 6
	14 Labourers \pounds Diem	2
6	15 Ragg Paving repair's \pounds yard gravel incl.	6



(44)
Digging.

1 Digging & carrying away, $\frac{1}{2}$ yard, Solid measure	1 8
2 Digging & filling in $\frac{1}{2}$ yard	10
3 Labourers in dry work $\frac{1}{2}$ day	1 8
4 D ^o in wet & dirt under Ground	2
5 Carrying away Soil, $\frac{1}{2}$ Ton all Charges included	5
6 Garden Gravel, $\frac{1}{2}$ Load	2 6
7 D ^o screen'd	3 6
8 Clay, $\frac{1}{2}$ Load	5
9 Carriage of Rubbish out of the Tower of London, $\frac{1}{2}$ Load	1 2
10 Carriage of Dirt & Rubbish from Whitehall, St James's & Westm ^r , $\frac{1}{2}$ Load	1 2
11 Carriage of Materials to Kensington, $\frac{1}{2}$ Load	4 6
12 Carrying away Mudd from Sewers, $\frac{1}{2}$ Load	1 2
13 Sand $\frac{1}{2}$ Load	2 9

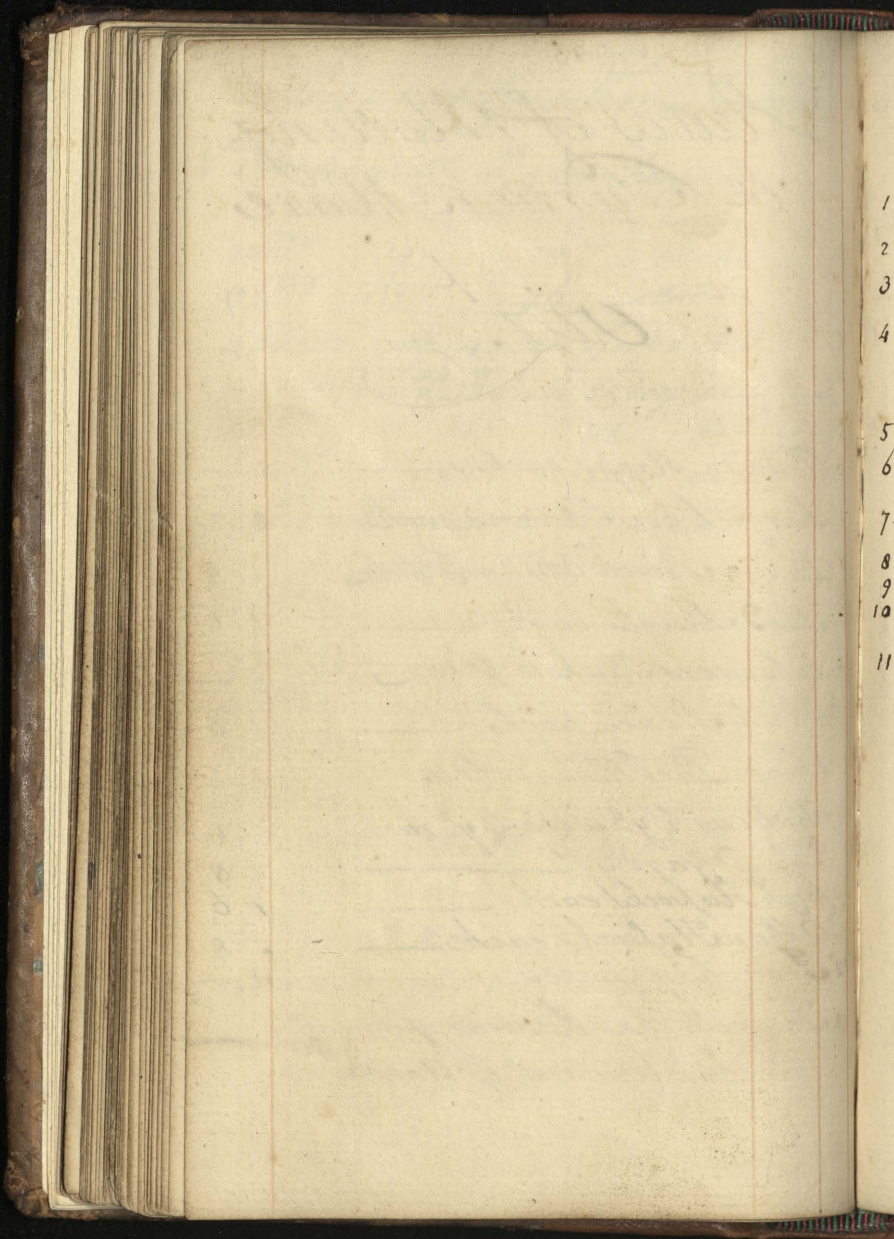
Prices of Garden Tubbs.

N ^o 1	Garden Tubbs w th 5 iron hoops to		
	each 42 ⁱⁿ diam ^r 30 deep; each	1. 15	
2	D ^o 39 28 each	1. 11	
3	D ^o 35 26 each	1. 5	6
4	Ditto with 4 iron hoops to		
	each Tubb 33 ⁱⁿ diam ^r 25 deep; ea	1. 3	
5	D ^o 31 24 ea:	1. 1	
6	D ^o 26 20 ea	16	
7	Iron Bands to the Tubbs		
	42 in. Diam ^r $\frac{1}{2}$ pair		7
8	D ^o 39		5
9	D ^o 35		4
10	D ^o 33		4
11	D ^o 31		3
12	D ^o 26		2
13	Cistern Tubbs 36 ⁱⁿ diamet ^r 30 ⁱⁿ		
	deep, each	1. 7	
14	Pitch, $\frac{1}{2}$ lb		2
15	To allow for all the old iron		
	Bands that shall be		
	returned, $\frac{1}{2}$ lb	18	13

Rates of Matting & Turner's Ware.

Viz.

16	Pound Mopps, each	1
	Large Hair Brooms, each	2. 2
7	Large Birch Brooms, <i>ydos</i>	1. 8
5	Shod Shovels each	1. 6
4	Labourers Baskets <i>ydos</i>	5
4	Rub Stones each	1. 6
3	Fine Packthread <i>ydos</i>	1. 2
2	Matting 2 y. wide, <i>Dy. run</i>	4
	<i>D. yard sq</i>	8
7	High Hapsocks each	1. 6
	Other Hapsocks each	8
12	Iron-hoop Pales	3
18	13 To matt the Houses of Lords & Commons <i>Ann</i>	80



1
2
3
4
5
6
7
8
9
10
11

Tin-work, Oyl, &c.

1	Tin Chimneys 14 Diam, $\frac{1}{2}$ ft run	2. 6
2	D ^o 12 Diam	2
3	D ^o 9 Diam	1. 8
4	Painting Chimneys on both sides ⁱⁿ 14 diam. $\frac{1}{2}$ ft run	7
5	D ^o 12	6
6	D ^o 9	5
7	Large Tin horn Lanthorns, each	2. 10
8	Middling D ^o	2. 6
9	Small D ^o	1. 9
10	Lamp Oyl $\frac{1}{2}$ Gallon	4
11	Cotton, $\frac{1}{2}$ pound	3

Gilding

L 59

ornish mouldings & Ornam ^{ts}	8 0
of T ^r & Supl ^r Bussishd	
D ^o on Plain mouldings	6 0
Run of Ground under Ornam ^{ts} 5 th side	3 6

Carver

8 0	Small Bubble & tongue Astragal	0 6
	Do Larger	9
6 0	Small Ooole & tongue close	6
3 6	Larger Do	10
	0 9 in 9 raffle leaf	9
	0 9 Ped Cap	2 0
	Ooole in Egg & Anchor very close	2 0
	Artichok w th husk & raffle tongue	2 6
	Bead & space strong undercut	9
	Close bead roped	4
	Bead & space	2
	Staff in Husk & space	10
	0 9 7 leaved grass & raffle tongue	6
	Ooole small Egg & anchor	9
	Do in rose & Egg	} 1 6
	Do in Egg & anchor panned	
	Do very close egg & anchor	3 0
	Freere Tustoon Laurel leaves & berry	13
	Do 4 Sept	
	0 9 upright leaves veind & tongued	1 6
	Do composed leaves & ruffled tongue	9
	Do in water leaf & raffle tongue	1 3
	Do 3 hirt ruffled leaves & flow ^r	5 0
	Do in base full ruffled leaves & tongues	3 0

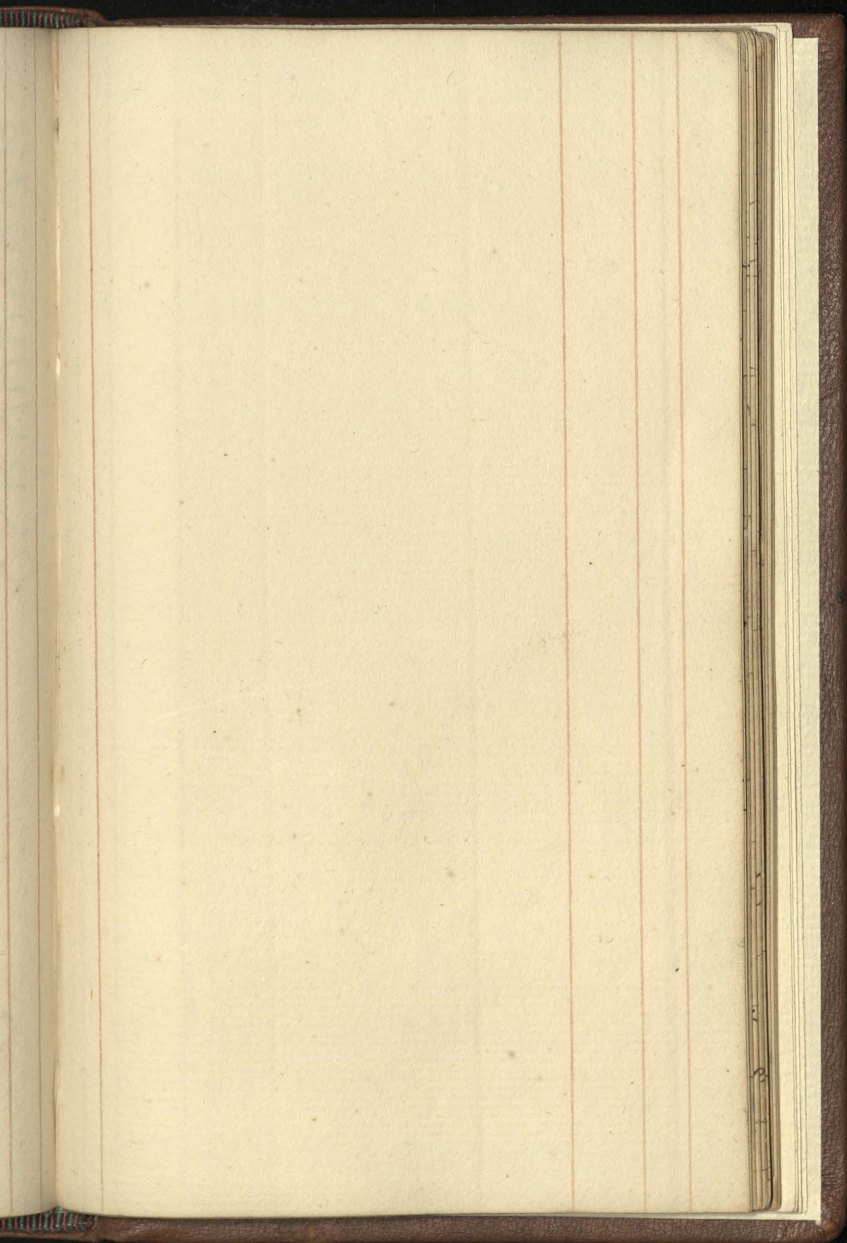
Torus in Goloss & hollow Trun — 0
 D^o double ribband & 12 raffle flow^r — 1 0
 D^o close laurel leaves & vine — 2 0
 D^o large in reed & double ribbands — 2 2
 D^o ribband & 16 ruffled flowers — 1 0
 D^o Bay leaves & ribbands — 1 6
 D^o double Goloss flow^r & tongue — 2 0
 D^o large in ribband & flower — 1 10
 Small pine apples in door Cornicosta 1 6
 Deal Corinth Cap 2 Tr at La fau 40 —

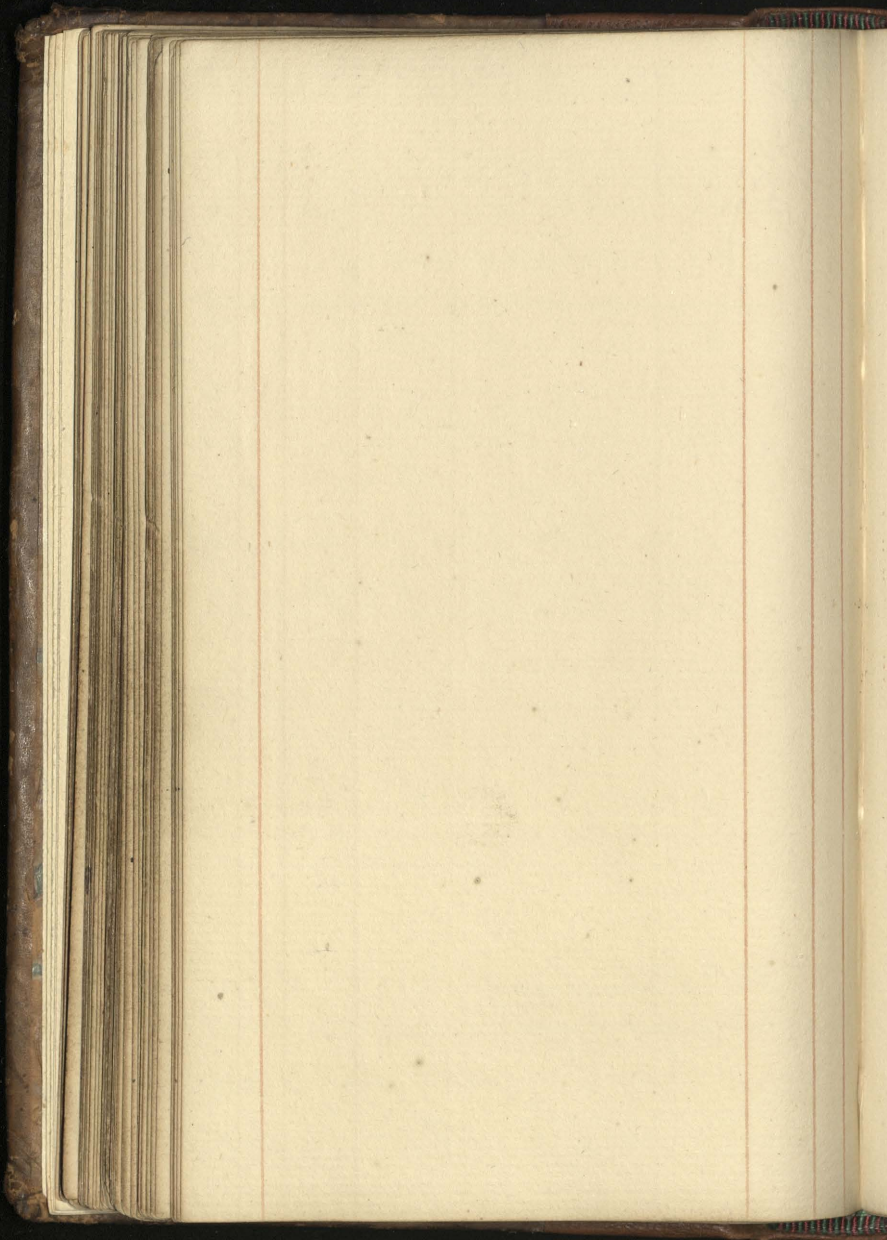
R^t Wainscot

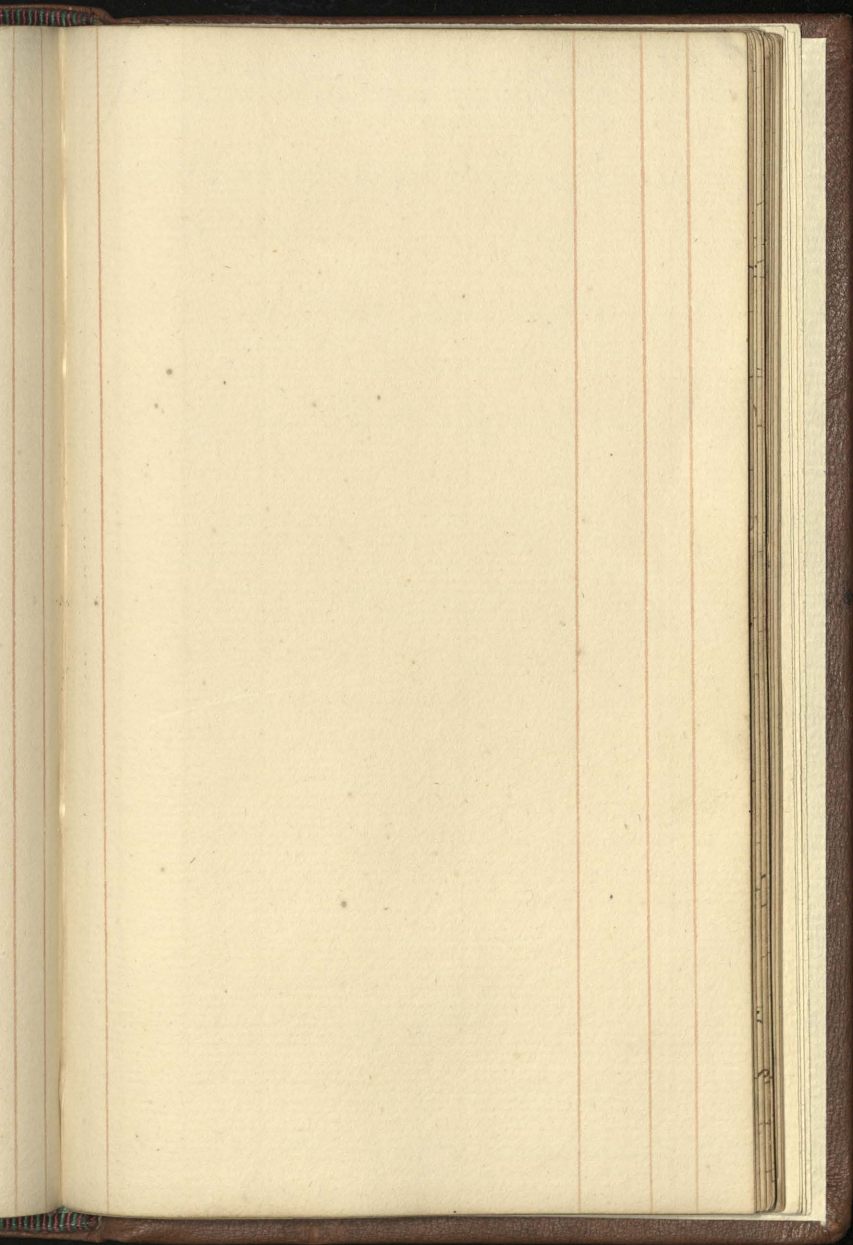
09 3 leaved Gress ————— 6

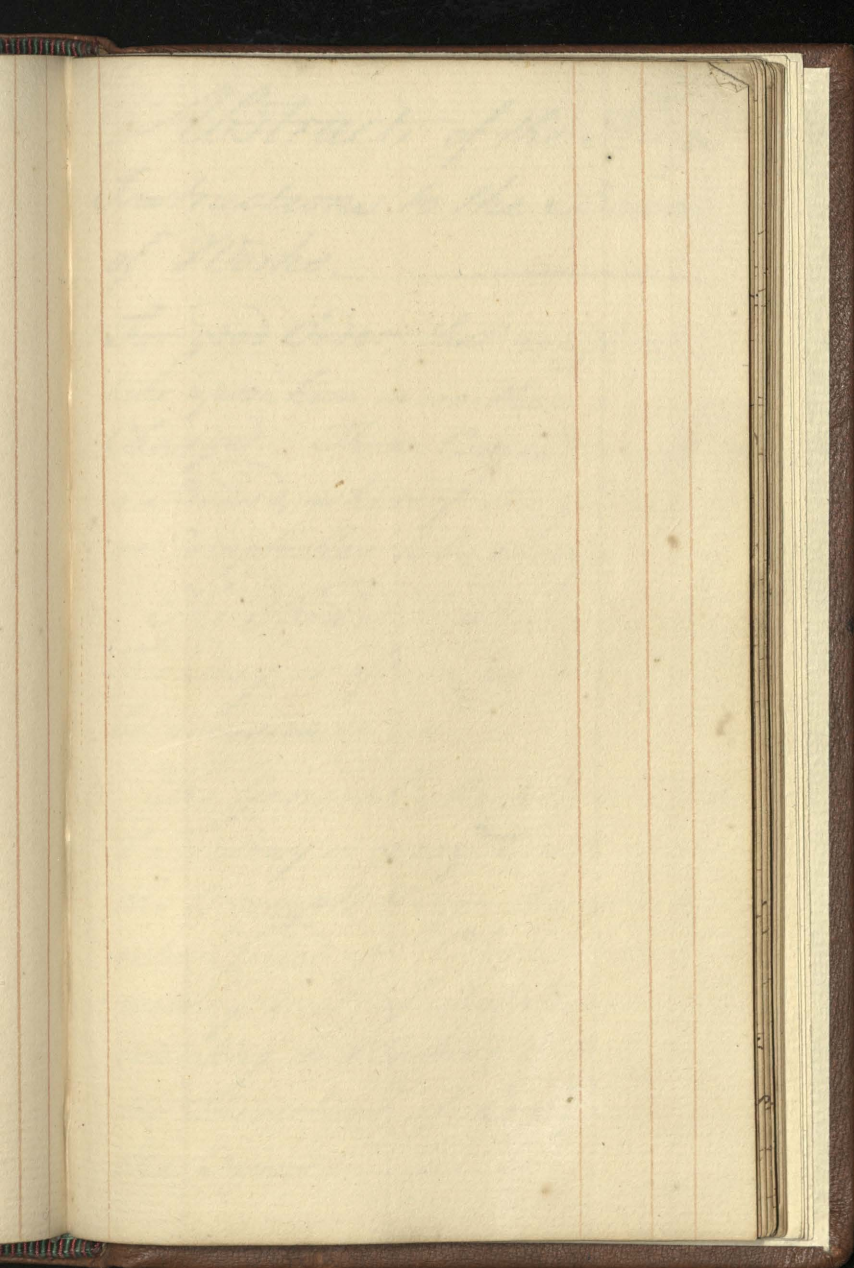
Impost close water leaf & raffle tongue 3 6

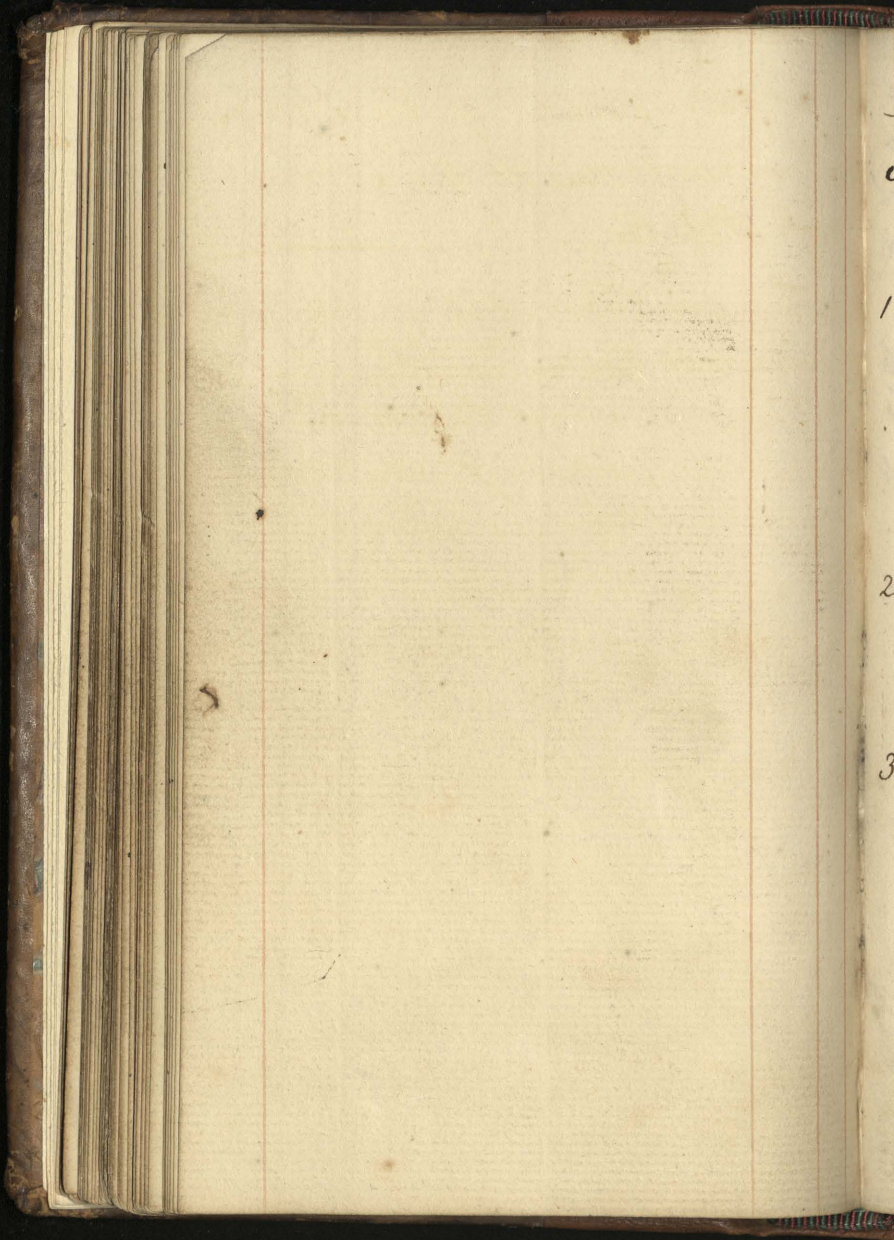
2 Vitruvian wool & 2 raffle'd back 2 0











Abstract of the King's Instructions to the Board of Works.

- 1 For good Order, that no Officer take upon him more than his proper Charge. Three Comm^{rs} to make a Board, whereof the Surveyor or Comptroller to be always One.
- 2 The Board to meet every Thursday, or oftner, as there shall be occasion.
3. The General Meeting to be the 2. Tuesday in every month to pass the Accounts & sign the Books when filled up. Clerks to send weekly Acco^{ts} of what Repairs are wanting, in Writing; & to have the Directions of the Board for the same

4. Contracts to be made Annually, & laid before the Treasury on the 1st Day of March. All original Warrants to be deliver'd to the Paymaster for Vouchers.
5. His Ma^t's verbal Commands to the Surveyor to be immediately enter'd in the Minute Book; & Estimates to be made of Works done by vertue of such Commands.
6. Officers & Clerks to sign all Extraordinary Accounts.
7. All former Demands not settled to be done by the present Board.
8. His Majesty reserves the nomination of Clerks to himself; but as they become vacant to be fill'd up by the Surveyor.
Clerks

(50)

Clerks not to be moved but by J.
Treasury; the Board may
suspend them.

9 Patent Officers may appoint
Deputy. The Surveyor's Deputy
to be approv'd by the Treasury
only; Other Deputy or Patent
Officers to have their Qualifications
certified by the Surveyor & one
other Officer & then to have a
Treary Warr. to act. Patent
Artizans, Qualifications of their
Deputy to be certified by the
Surveyor & three other Officers.
No Deputy to be chargeable to
the King, except the Surveyor's

10 No Officer of the Board to be
an Undertaker of Works direct-
ly or indirectly; & any Officer ^{acting} contrary
renders incapable of serving for the
future.

11 Each Clerk of the Works to have a Labourer in Trust, approved by the Board; and the Clerk to be responsible for his Labourer in Trust.

12 The Paymaster to make all Payments pursuant to the Directions of the Board; to signify to the Board at all times when he receives Money; to keep an Imprest Book, which is to be cancell'd when the whole is satisfied; to satisfy the Board at every monthly Meeting what money he has paid; & to deliver in his Account to the Auditor 3 Monthly after Payment.

13. Paymaster, by Direction of the Board to apply for Money
and

and to give an Acc^t. in writing when he has rec^d. any, that the Board may direct a Distribution.

14 All Riding Charges to be ascertained at the Board, & Artizans to be allowed reasonable Charges for Journeys

15 Number of Clerks to be appointed at the several Palaces, &c.

16 Secretary to attend the Board, take minutes & fill up blanks left for Prices. The Writing Clerk to be, one to write the Pay books to be delivered to the Auditors.

17 Clerks of the Works to measure & take Weights; the Surveyor to

to appoint other Clerks to assist upon occasion. All books of Dimensions to be deliver'd at the Office & to remain therein. No Clerk to measure without making application to y^e Surveyor.

18 Comptroller to keep short Entries of all Acco^{ts} & Bills sign'd by the Board. Pay List sign'd by the Board, to be deliver'd to the Comptroller. To transmitt monthly to the Treasury a State of the Office; & jointly to sign Memorials with the Paymaster for what money is necessary.

19 Paymaster not to make any Payments without Directions from the Board.

20. No Officer to Let or Lend his Lodgings without leave from the Treasury.

21. All Allowances to Officers & Artizans to be continued as usual, until Directions be given to the Contrary.

22. No Work to be order'd or done by the Board, except such as is necessary to keep out the weather & preserve the Building without Directions from the Treasury.

23. No Alteration to be made in any Buildings or Lodgings at the King's Expence. All Alterations of Lodgings to be obtain'd by the King's permission

permission; & the Board to
take care that no damage
be done to the Building by
any Alterations or Embellish-
ments.

24 The King prohibits and
forbids any Charge in furnishing
his Houses appartm^{ts}. or Lodg-
ings inhabited by mere Grace
& Favour only; & charges
that no Allowance thereof
be made in the Office of Works.

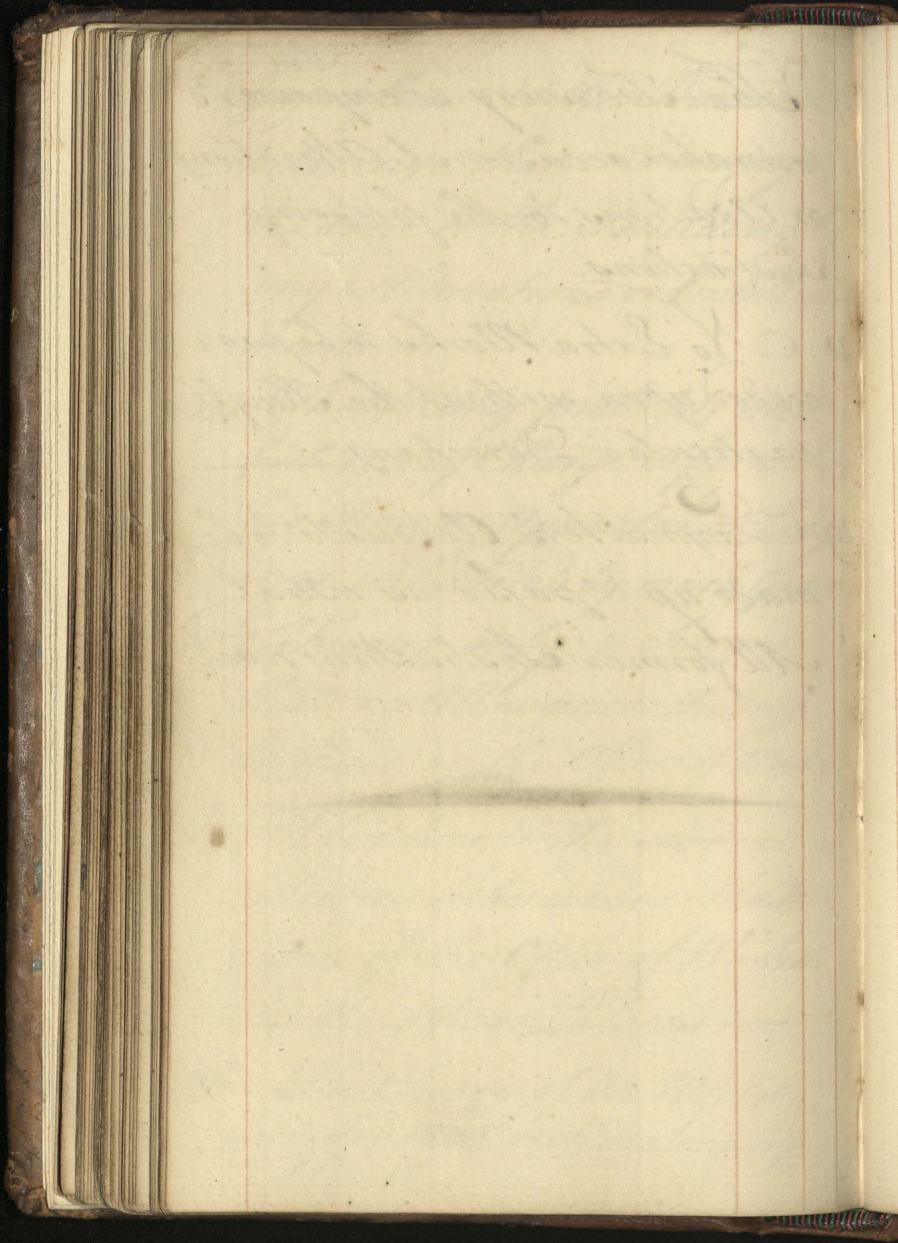
25 Windsor & the several
Newges to be under the
Care of the Office of Works,
as the other Palaces are.

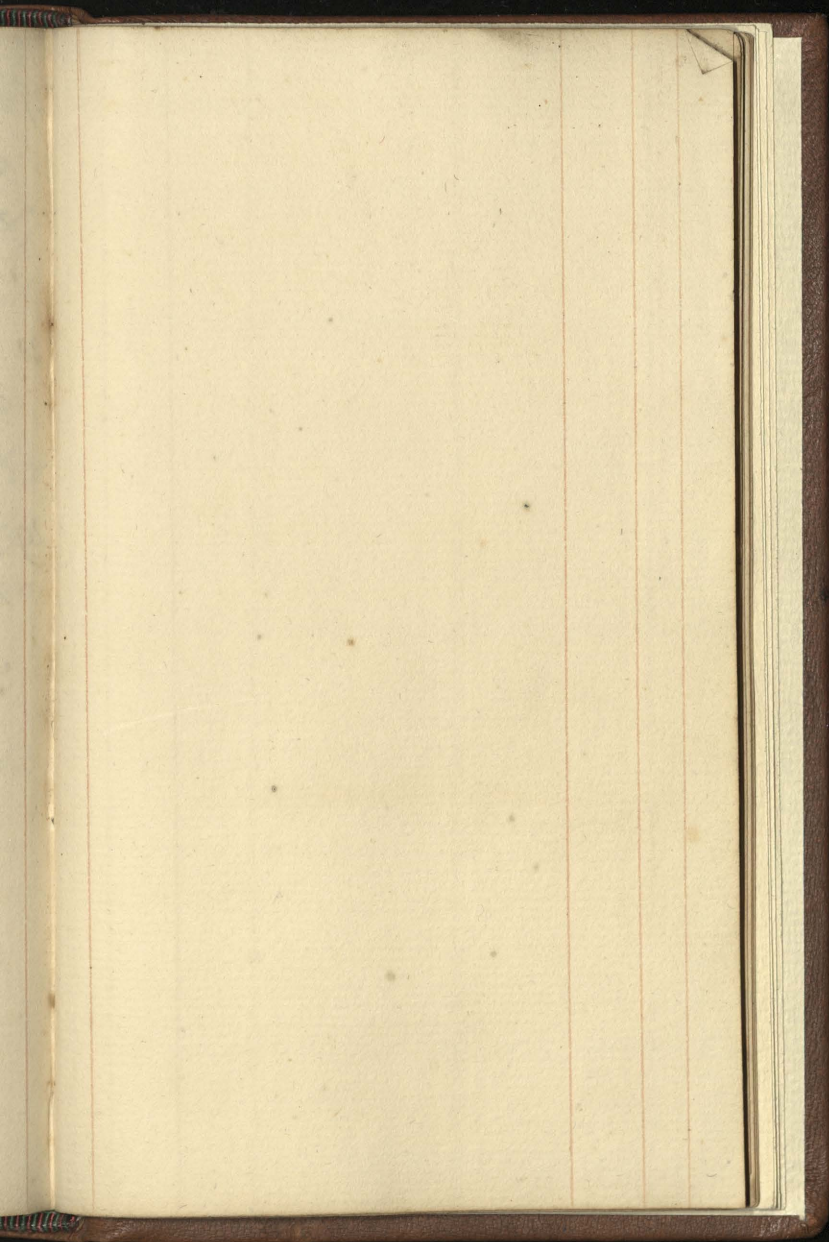
26 The Charge of the Works
limited 1200^l. each Kalendarly
Month

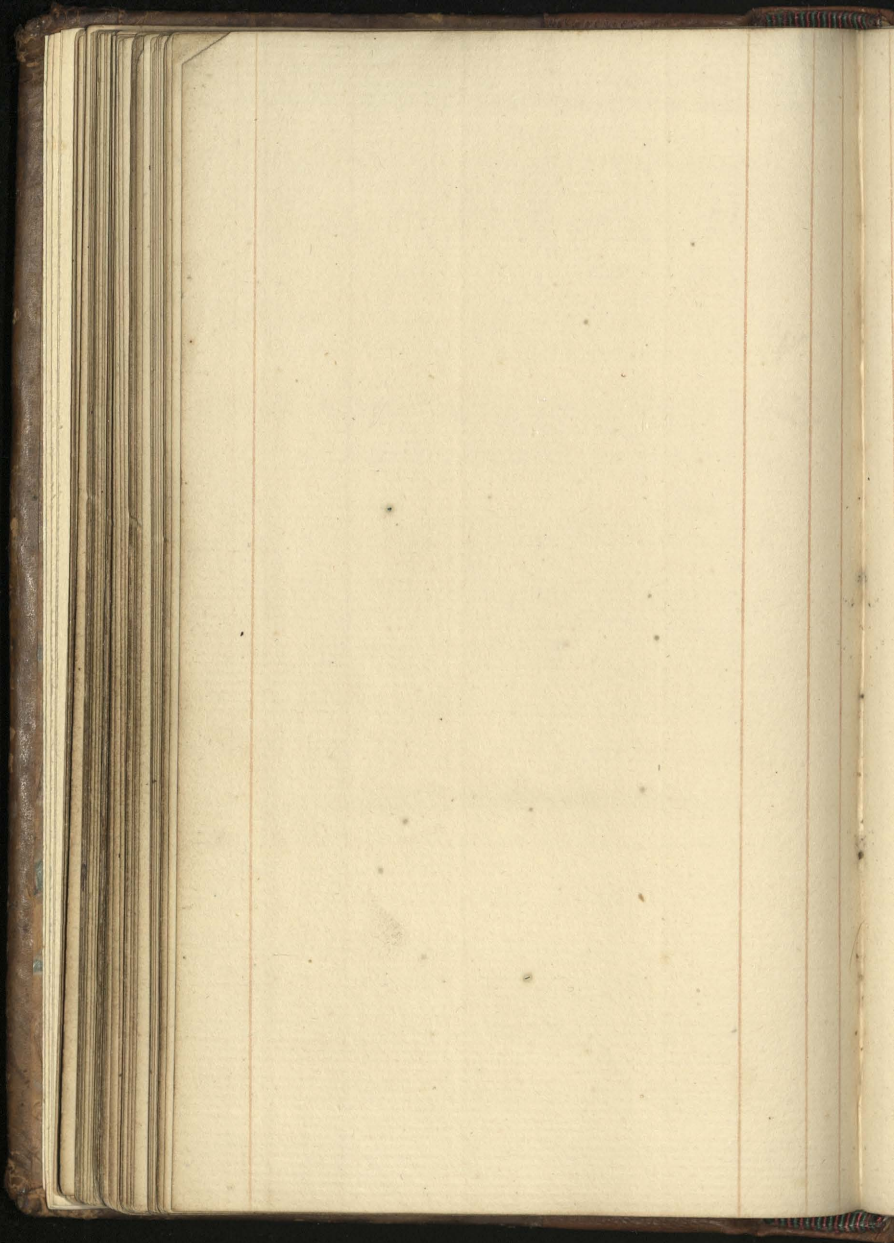
27 The Treasury is empower'd
to make occasional Alterations
or Additions to the foregoing
Instructions.

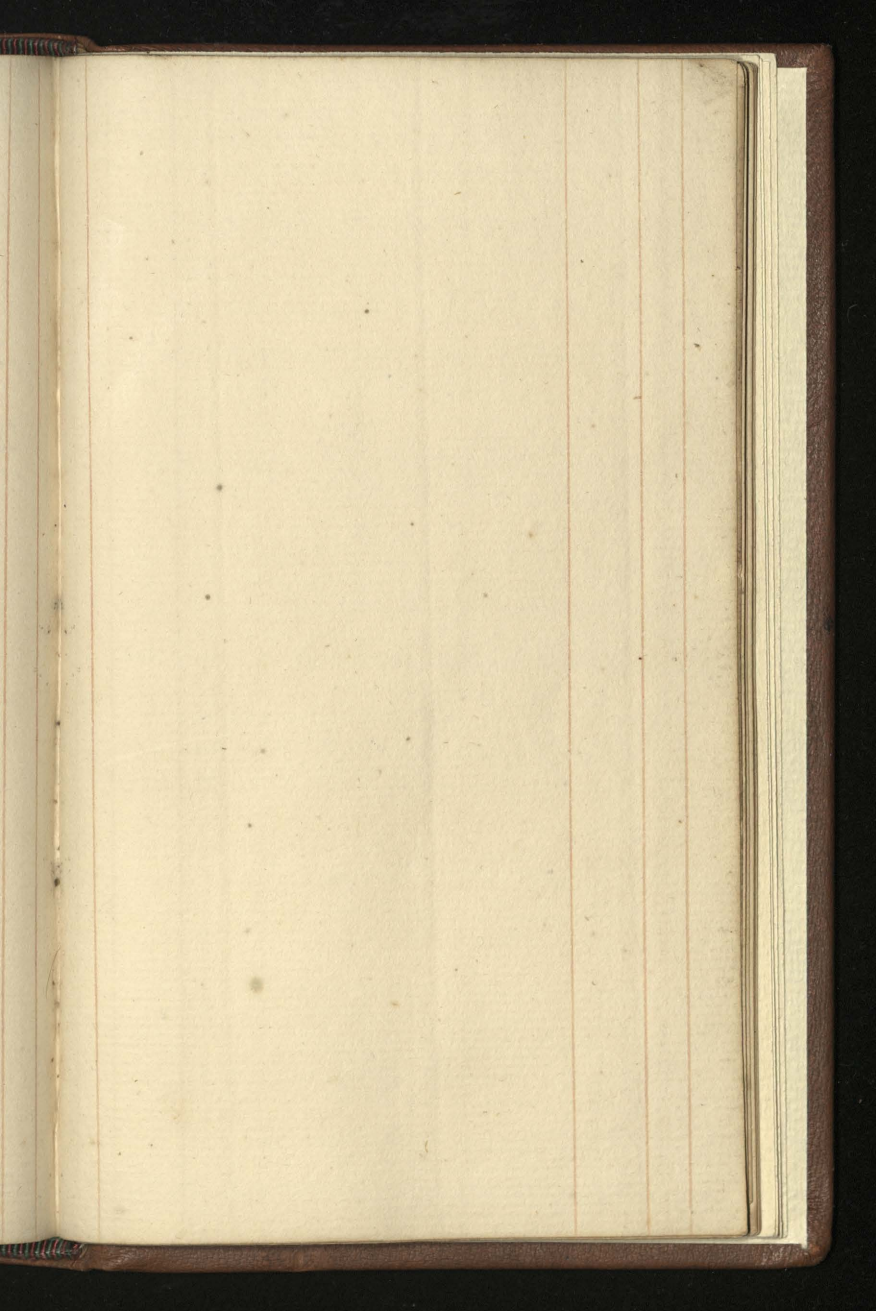
28. No Extra: Works to be pro-
ceeded upon without the King's
particular Directions

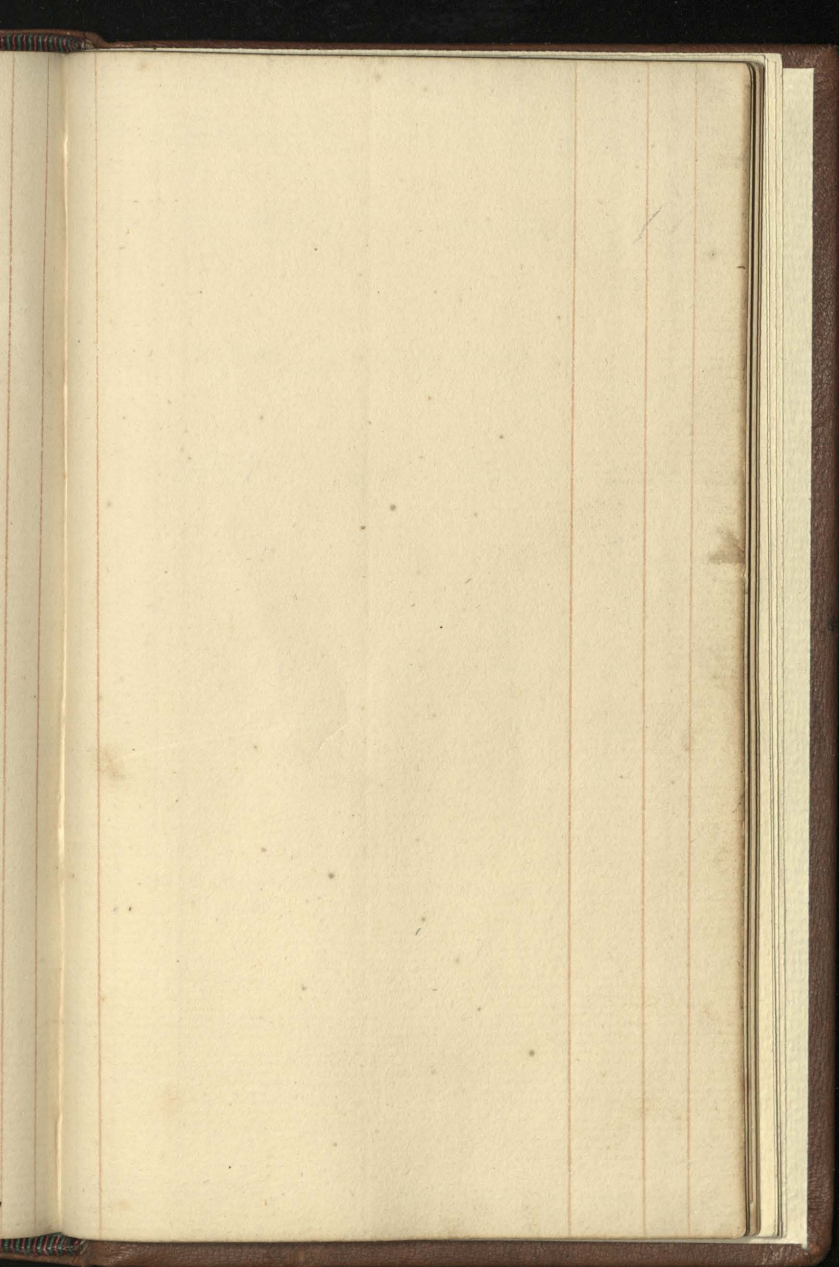
29 Paymasters Accounts to be
made up & pass'd as usual.
All former Instructions revoked



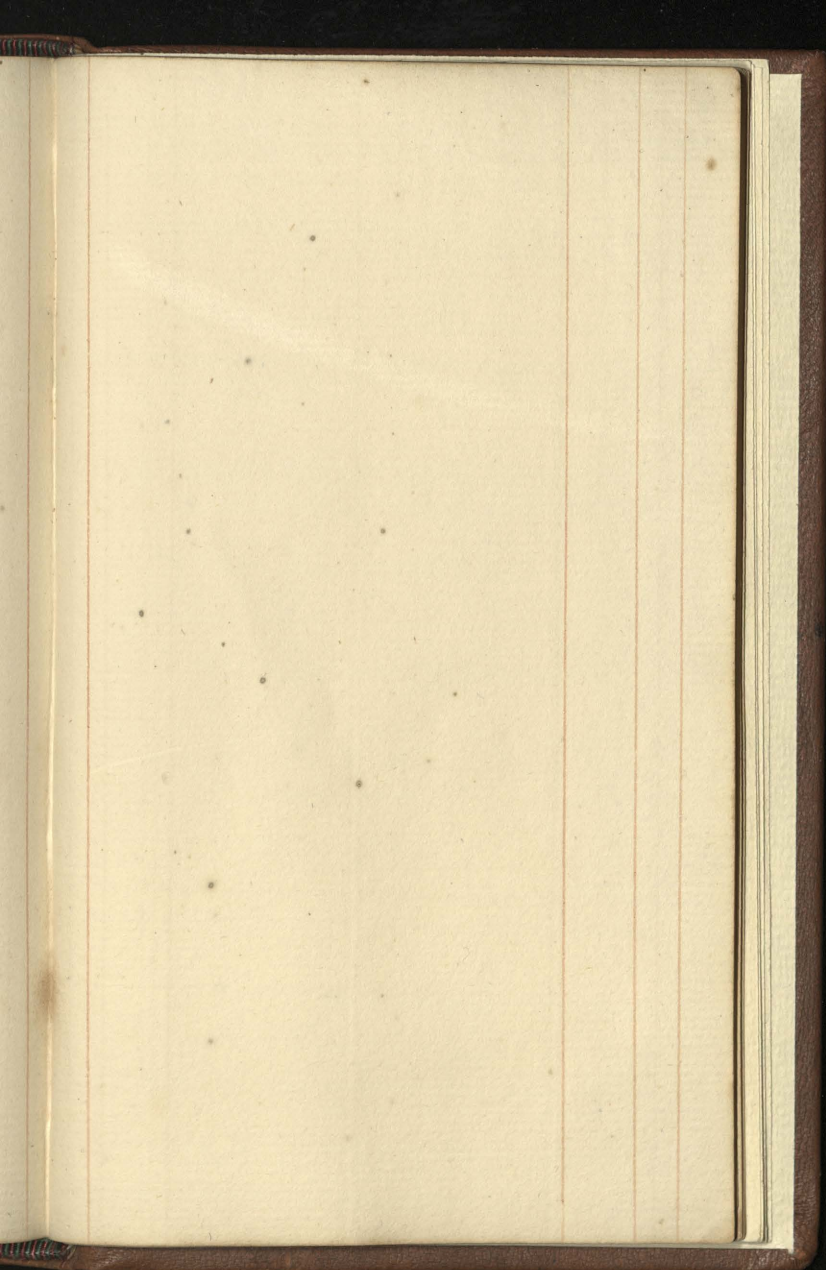




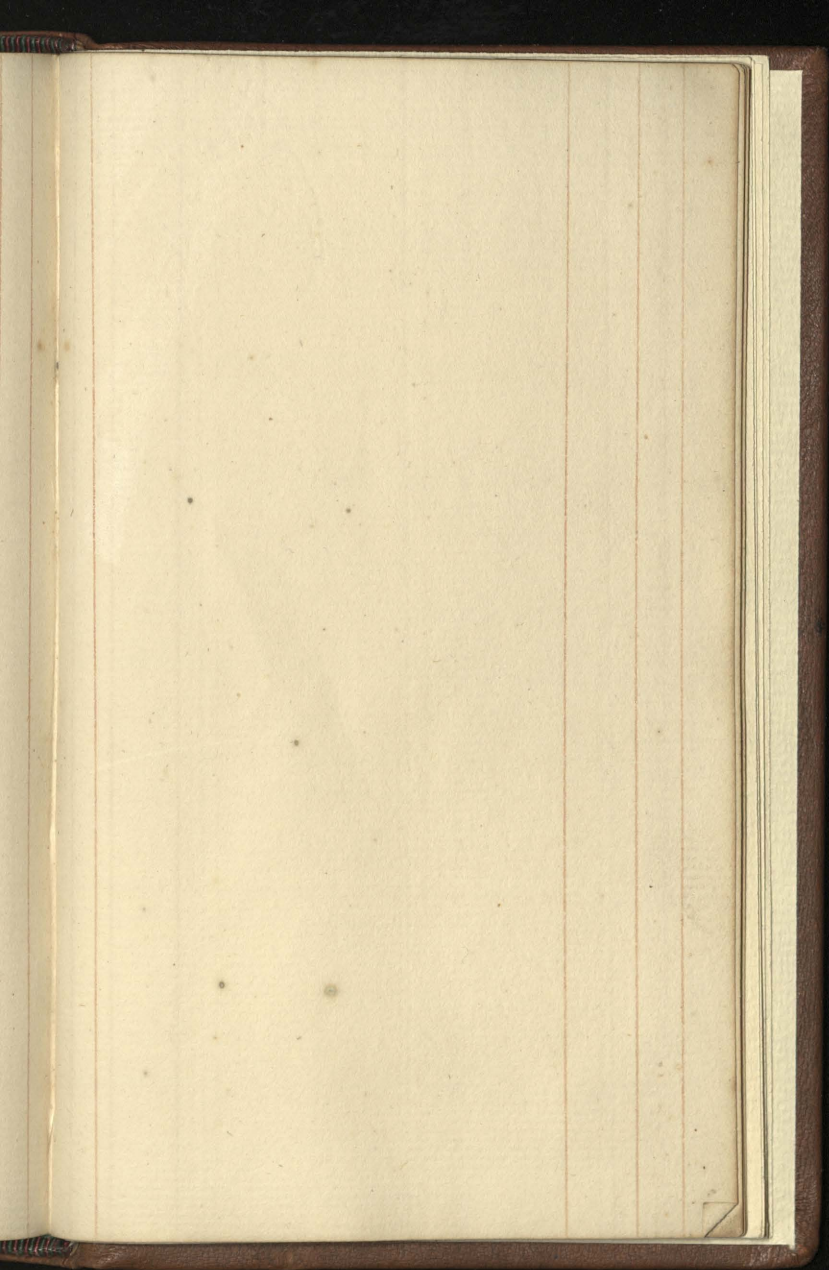


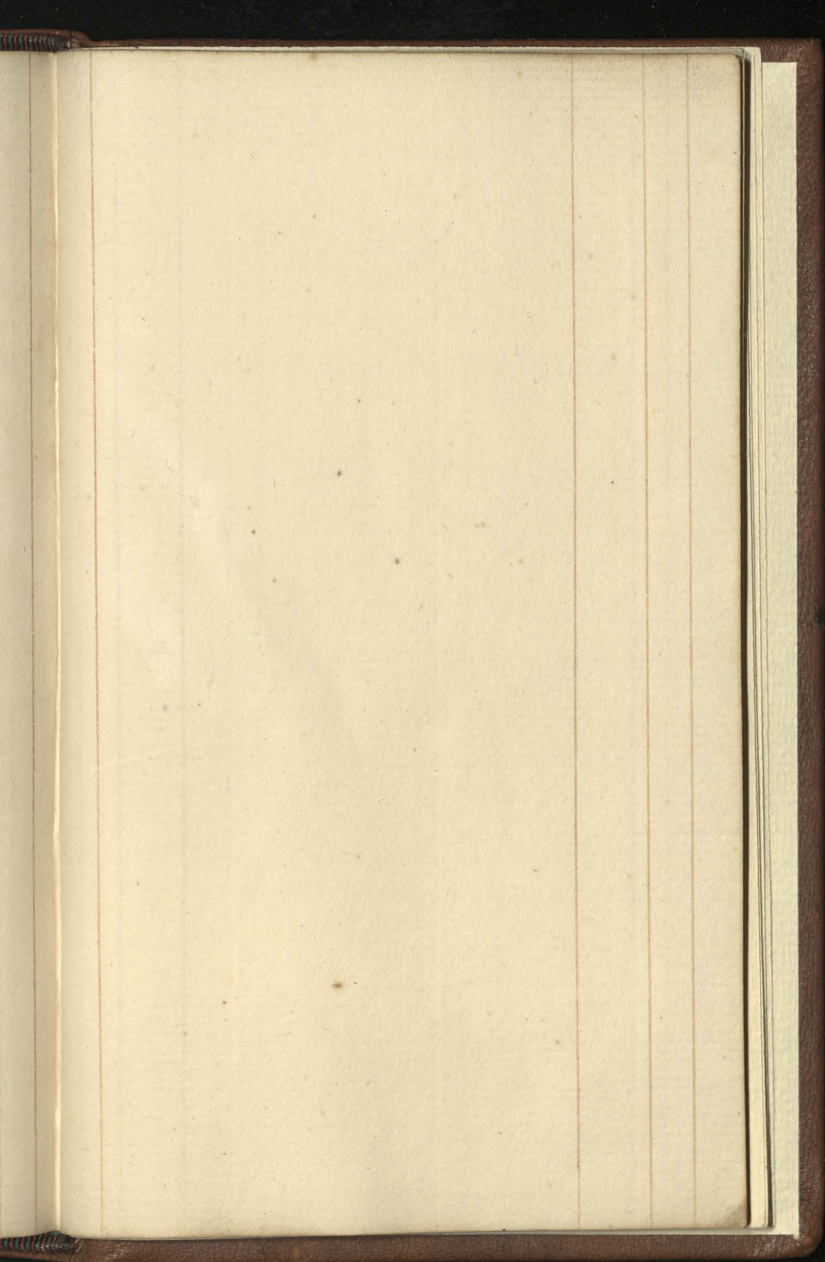


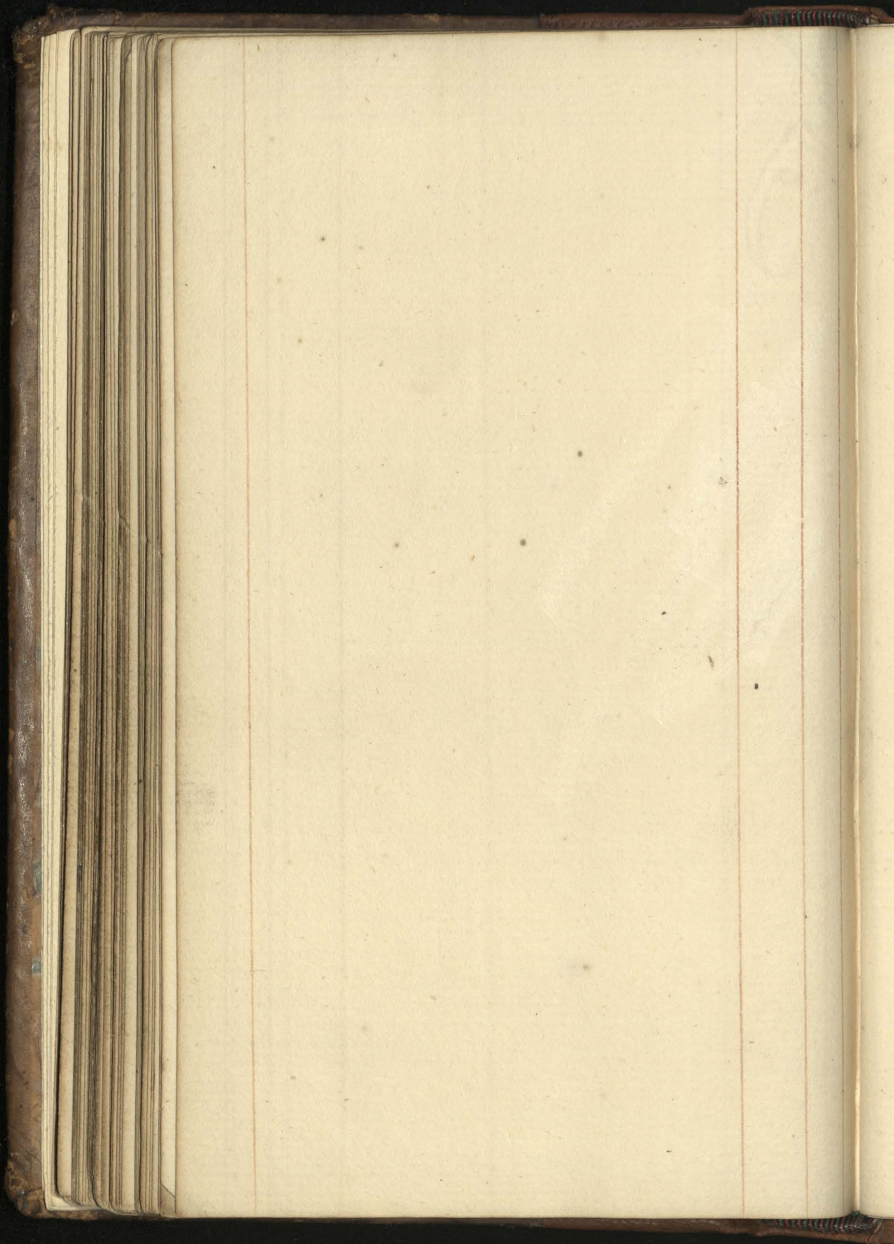


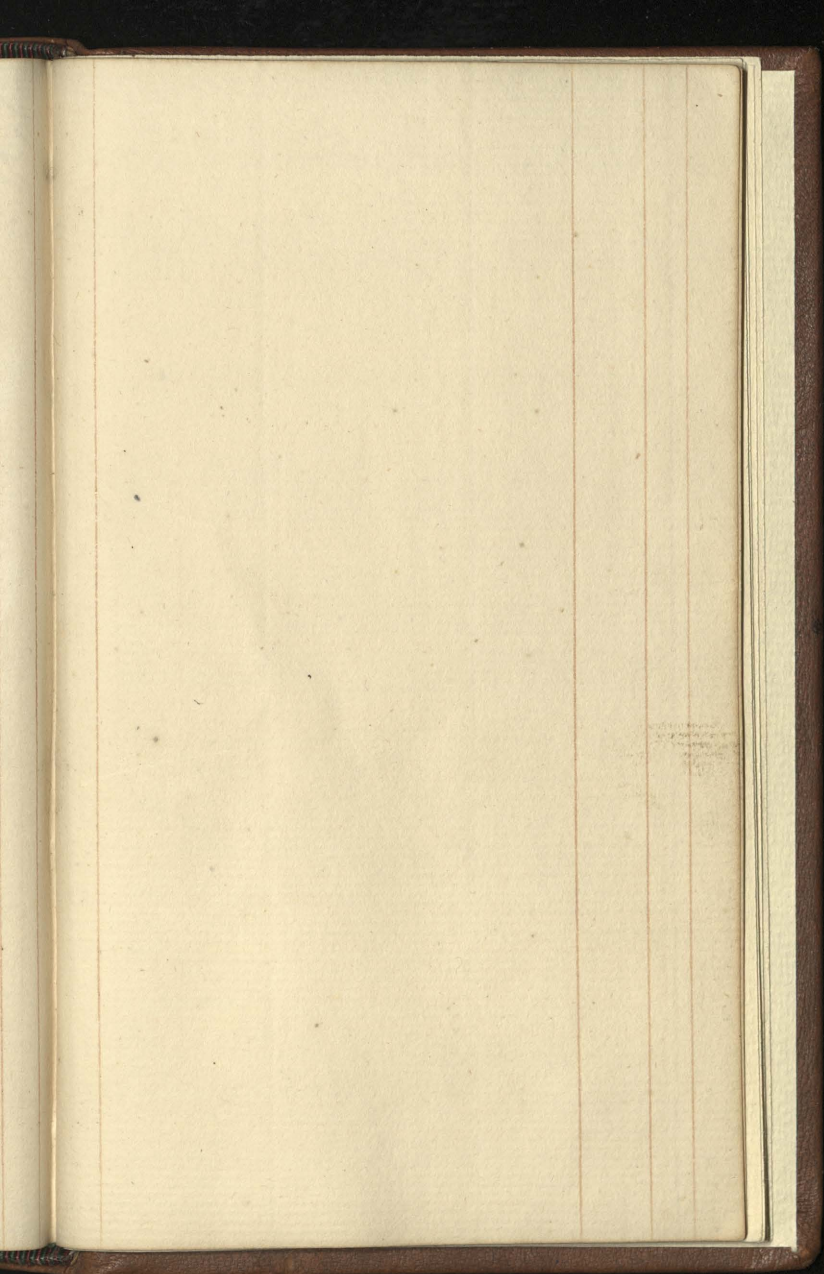


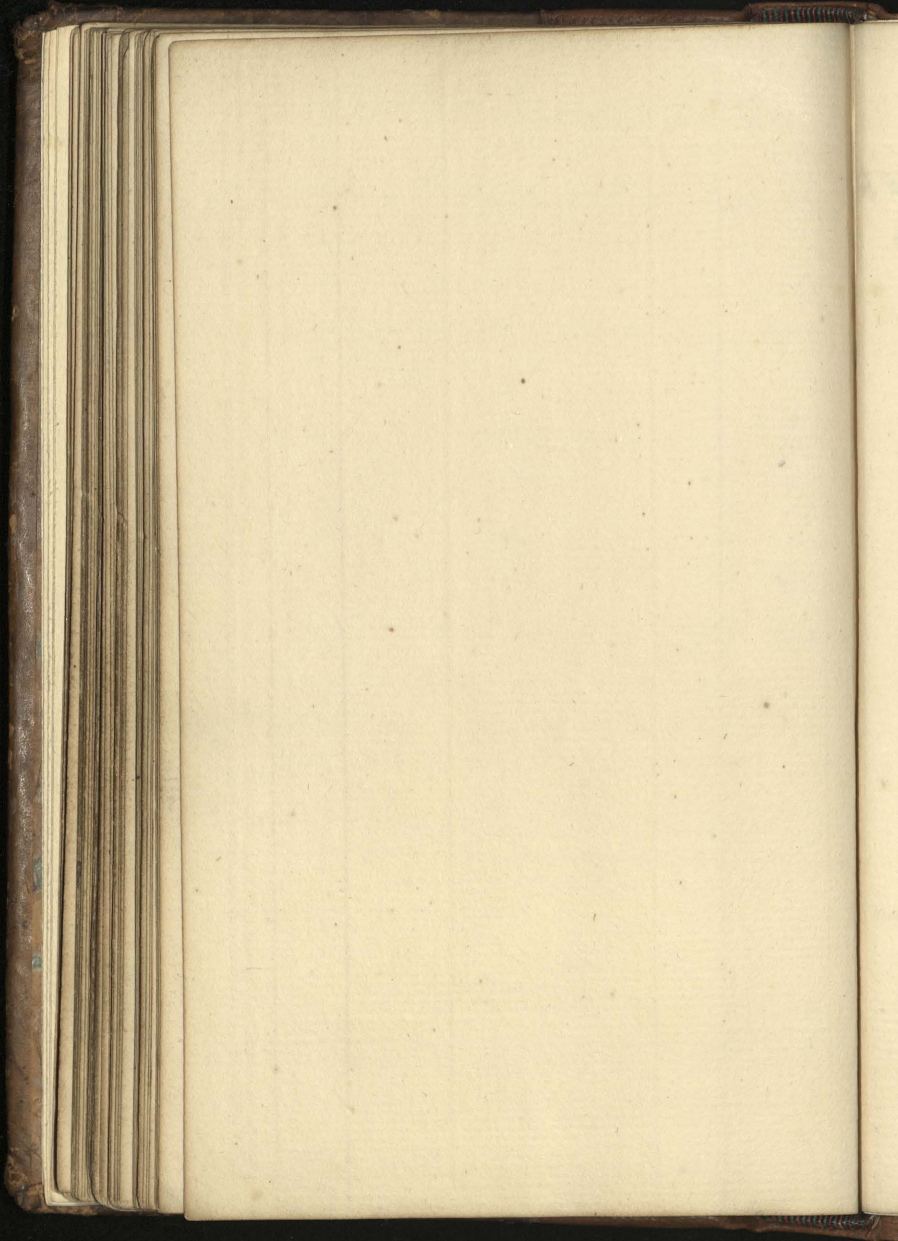


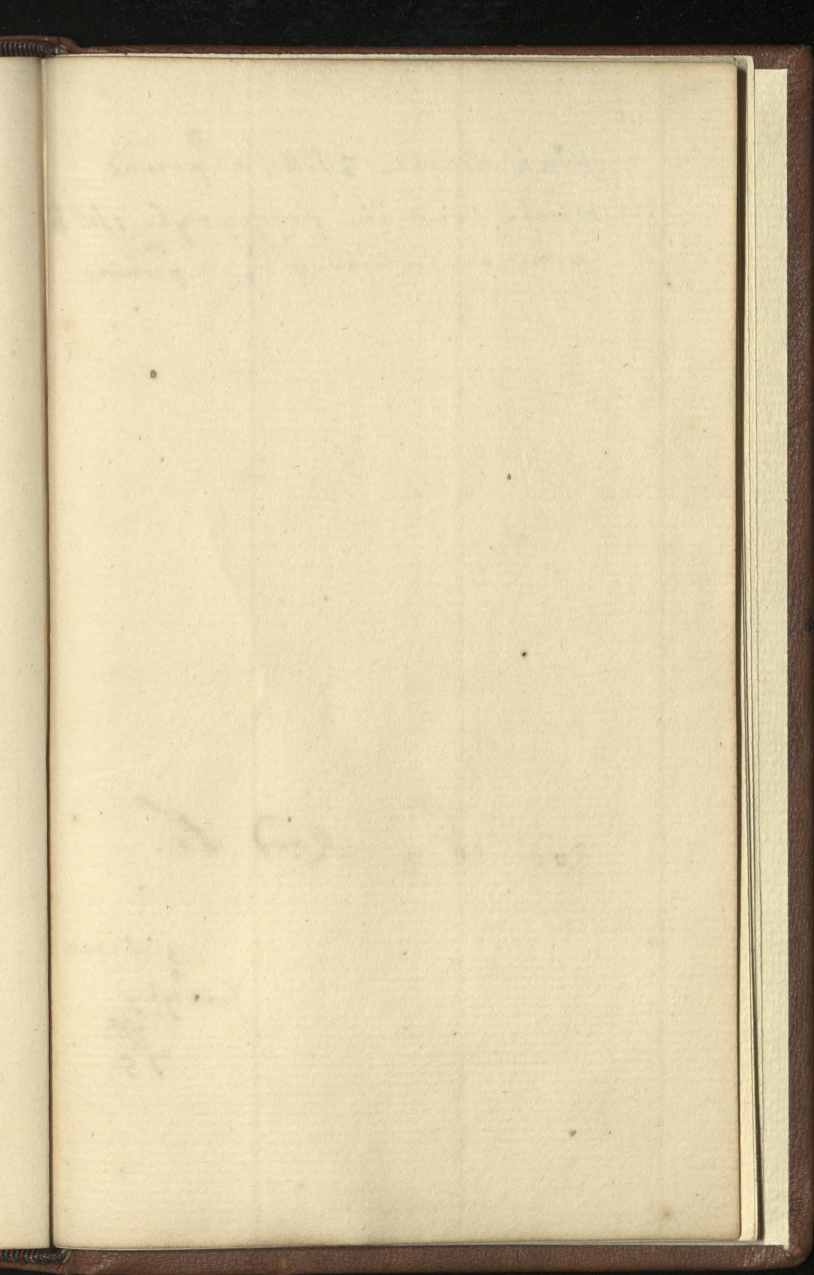












Blak white 3 fill: a pound
white Lead in poppy oyle 1 fill
Common white 4 $\frac{1}{2}$ a pound

Rod ^{ft} 16 $\frac{1}{2}$ Rod ^{ft} 22:

$\frac{3}{4}$ of a year
Surveying
75

ll B

eaY

