

Windsor Castle, State Apartments

Classified Specifications

1

A new
The King's Throne

to be executed to Working Drawings C. 18. a. b. c. d,
and made of the best seasoned Mahogany; and
Ornaments carved in the best possible manner.

The Cornice to be glued up ^{as} Inch thickness,
and the Joints ~~##~~ instead of butting to
splice.

The Top to be made in two parts, the ^{bits}
and Mouldings to be glued up in thicknesses;
rabatted to receive panels: - the inside Panels and
Ceiling fitted and screwed to receive Velvet, the
ceiling to be flush paneled.

The Ornaments of Centre of Pilasters to
be separate to allow the Velvet back ^{to} crown.

The frame of Valance to be $\frac{3}{4}$ Inch
when finished.

An ~~Inner~~ flush Paneled frame for
Back. 1 Inch deal

The whole of the Carved Ornaments,
Mouldings, Crown &c to be gilt in Oil and
burnished

burnished Gold; except the Ermine, imitation of
 Gems of Crown, and outer panels of Dome;
~~which are~~ to be Silvered, and finished with their
 respective Colors.

The Valance inside and outside, back of
 Throne, and Ceiling panels; to be covered with
 rich Tartan Blue Velvet equal to Pattern.

The Arms, Corners, and Crosses of back,
 Stars and Tartans in ceiling; the Ornaments,
 Roses, Thistle, and Shamrock; inside and out
 on Valance to be richly embroidered in gold,
 Silver, and color to various designs and trimmed
 with rich gold Lace and Gold Bullion
 fringe 4 Inches deep.

A ^{new} State Chair to be executed to Working Drawings
 C. 22, and made of the best seasoned Mahogany:
 the Cheeks forming the Arch under Elbows to be
 1 1/4 Inch thick including fillets, and Palm
 branches on each side planted on: the tails 2
 Inches thick.

T.

To be prepared in the very best manner and gilt in Oil & gold, except the fillets, stems of leaves, Globe, and Cross on top: which are to be burnished and double gilt.

The loose Seat, Back, and Elbows; to be made of $1\frac{1}{4}$ Inch Oak by 4 Inches wide, webbed 2 Inches apart; to be square stuffed from under and back: in fine canvas with the best curled Hair.

The loose Seat, Back, and Elbows; to be covered with rich Purple Velvet, and richly embroidered in Gold, Silver, and color, of Order of Garter, Palm branches &c: trimmed with gold lace, Cord, and gold fringe $3\frac{1}{2}$ Inches deep in front of cushion.

^{new} A Footstool to be executed to Working Drawing C. 23 and made of the best seasoned Mahogany, the Rails to be $1\frac{1}{2}$ Inch thick and carved in the solid.

To be prepared and gilt in Oil and

4
burnished Gold.

A loose frame Seat $1\frac{1}{4}$ Inch
thick by $3\frac{1}{2}$ Inches wide of Oak, webbed 2
Inches apart; to be square stuffed from
under side in fine Canvas, with the best
Curled Hair.

To be covered with rich purple Velvet,
and trimmed with Gold Lace, and rich bullion
fringe; $2\frac{1}{4}$ Inches in depth.

King's Throne Room

Six Window Cornices to be executed to Working
Drawing C. 31 of Honduras Mahogany the
Ornaments to be Carved with $1\frac{1}{2}$ Inch Deal
Lath, 2 Brass Rods with Pulleys, Brackets &c.

The Cornice to be prepared in the very
best manner and Gilt in Oil and burnished
Gold.

5

Queen's ^{old} Throne to be altered to Working Drawings
P. 151. a. b. c. d, with additions as shewn in color of
the best seasoned Honduras Mahogany.

The old and additional Cornice to be
fixed with strong Screws, from a new inside
Wainscot dovetailed frame 12 Inches deep
and 1½ Inch stuff; which is to be fixed to
Wall with strong Iron Brackets, under frame,
and Iron Rods.

The Cushion, Wreaths, and Ornaments
of Pilasters, to be Carved in the very best
manner.

To be Repaired and prepared in the
very best manner, and Gilt in Oil Gold;
except the fillets, berries, stems of leaves,
ground

4 6
Ground of Ball and Cross.

The outside Festoon Valances and Bells Corners, to be of rich Crimson Satin to pattern; and Embroidered with old Embroidery to design: lined with Gros de Naples, and trimmed with rich Gold color Silk bullion fringe 7 Inches deep: 6 Tassels and 2 Yards of Rope to match. The Back of same Satin, to be hung as Banner Drapery with double Bells enriched with old Embroidery border; and new Embroidered Arms of their Majesties in the Centre: to be lined with Tammy, and trimmed to match Drapery: to contain 91 Yards of Satin, 30 D^o Gros de Naples, 55 D^o Tammy, 20 D^o Silk bullion fringe, 6 D^o Rope, and 6 Tassels.

The Inside Valances to correspond, with Embroidery, Trimmings, &c but on Aerial Blue Satin.

The Cove and Ceiling, to be richly

7

embroidered in Festoons, and Wreaths; and
the whole to be interlined with Wadding;
And to Contain

14 Yards Satin,
14 lb Gros de Naples,
20 lb Fringe,
5 lb Rope, (and
6 Tassels.

A State Chair to be altered to Drawing P. 156

with additions of well seasoned Honduras
Mahogany, the Cushion and other
Ornaments to be carved equal to other parts:
the Crown and Cushion to form a flat
Oval on the back.

To be repaired and prepared in
the very best manner, and gilt in Oil
Gold; except fillets, beavies, and Ground of
Ball and Cross: which are to be burnished and
double

double gilt.

Loose frames for Seat and Back, to be finished in every respect same as E. 51; except to be covered with Crimson Satin embroide^d to design, and fringed with deep Silk Bullion fringe.

^{old}
A_n Footstool to have 4 new Carved paw feet to design P

To be repair^d and prepared in the very best manner, and gilt in Oil Gold; except the fillets; which are to be burnish^d and double gilt

Loose frame Cushion, stuffed and finished in every respect same as above; but covered with Crimson Velvet.

King's Throne Room.

Two ^{old} Pier Tables. - Two to be altered and reduced to
 Working Drawing C. 21. with Additions in Color, such
 Additions to be of the best seasoned Honduras
 Mahogany; ~~those~~ ^{the} Plymth to be dovetailed,
 and the Ebony fillet to be planted on: the
 Mouldings and under ornaments of Oak and
 Palm with Order of the Garter, to be carved
 in the best possible manner. The leaves in
 * centre of frieze Moulding to be Papier Machie
 One new Pier Table ^{with very antique Marble Slab to be on it} to match, except the
 Truss Legs, Frieze frame Moulding, and Metal
 leaves; which will be supplied.

The whole to be prepared in the
 very best manner, and gilt in Oil Gold,
 except the fillets, Stems of Oak and Palm branches,
 Arms of Garter, Croop, and Berries; which
 are to be burnished and double gilt. -

Two ^{old} Wood Antique Slabs to be
 fitted, repaired, and new polished. -

One new Slab to match. -

One Glass.

If these Items
relate to the old
Pier Table, they
should follow
after them and
before the
Item for the
new Pier Table

^{old}
One Glass to be reduced. -

Two new best plates of Glass silvered,
43 x 31 1/2 and a new paneled Blind frame.

King's Ante Throne Room.

^{new}
A Pier Table. - to be made new to Working Drawing

D.41, ^{from old} except the two front brass Legs, the front
frieze Moulding, and ^{old} Metal leaves; the Additions
in color to be of the best seasoned Honduras
Mahogany, the Plymth to be of Inch stuff mitre
dovetailed with an Ebony fillet planted on
the bottom. ~~and leaflets~~

The whole to be prepared in the very best
manner, and gilt in Oil gold, ^{4 bands} except the fillets,
and Acorns; which are to be burnished and double
gilt. -

^{old} Black & red marble slab to be
An Scagliola Slab in imitation of Verd
Antique, of 1 1/2 Inch thickness. ^{cut to order}

^{old}
A plate of Glass to be fitted. -

red,

re.

Drawing

ont

titions

itro

best

ets,

ubble

ard

King's Drawing Room.

^{old} Two Carved and Gilt Glass Frames and Trophy Heads ^{with} to be completed to Working Drawing E. 50, with Additions as shewn in color; the Frames to have a ^{new} bead and fillet with two squares added, ~~to be made new to pattern~~: the top Mouldings to be new and to match sides to receive rich Carved foliage Moulding which will be supplied; the frames to be lined up to receive Glass Plates.

The whole to be repaired and prepared in the very best manner, and gilt in Oil ^{Hand} gold, except the hollows, and tongues of leaf on frames, which are to be burnished and double gilt.

Two Plates of Glass 120 x 35 with their Blind frames, to be fitted and fixed.

^{old} Two Carved and Gilt Pier Tables. to be altered to Working Drawing E. 60. and made from an Occasional Table, by cutting down its centre; the backs to be carved to correspond in every respect to the fronts, adding new Pilasters, Mouldings, Ornaments &c, and mitre dovetailed Plynth with Ivory fillet planted on as shewn in color: two sides of
Legs

Legs panels to be sum⁸ 1/8 Inch and round sanded with paneled deal Blind frame to receive Glass Plates; the Additions to be of Honduras Mahogany (and the Ornaments carved. —

The whole to be repaired and prepared in the very best manner, and gilt in oil ^{gilt} gold, except the fillets, bands, and acorns; which are to be burnished and double gilt.

^{to} A black and gold Marble Slab to be cut ^{itto} and repolished, with square edges for arch. —

The tops of Plynths to be Scagliola to match Slabs. —

Two new best Plate Glasses polished and silvered 30 x 25 1/2. —

^{old} Two rich Carved Bronze open Pier Tables to be altered to design E. 53. by an additional Frieze frame with two Cross rails of Inch Mahogany mitre dovetailed, dowed and screwed to frame: the Ornaments on ditto, and backs of truss legs to be Papier Machie, those under frame to be Honduras Mahogany, and Carved equal to other

other parts of Table and fixed with Iron plates and Screws: the back to be Rabatted to receive Glass, and an Inch paneled blind frame. -

The whole of the Tables to be properly repaired and prepared in the very best manner, and gilt in Oil ^{Paint} Gold; except the berries, fillets, and Steins, which are to be burnished and double gilt.

The ^WBlack and Gold Marble Slabs to be repaired and repolished.

The tops of Plyths to be Scagliola to match the Marble Slabs, shewing a 2 Inch gold edge with $\frac{1}{2}$ Inch projection.

Two plates of Glass, one 61×21 , and the other 60×23 ; to be reduced to 52 - fitted and fixed.

Council Chamber.

A Carved and Gilt Glass Frame with Carved Head to be altered to Working Drawing F.68, by adding a new fillet, block, and small carved ornaments as shewn in color; the frame to be lined up

up to receive Glass and frame of $1\frac{1}{2}$ Inch.

To be repaired and prepared in the very best manner, and gilt in Oil ⁺⁺gold; except the fillets, hollows, bands, and stems of leaves, which are to be burnished and double gilt. -

Old Plate of Glass 56×86 with head plate 56×18 : edges of joint to be ground, fitted, and fixed; the small plate to have new blind frame. -
Sight of Glass. $103 \times 52\frac{1}{4}$. -

A Tier Table to be altered to Working Drawing F.

75. by adding new Pilasters frieze frame Plynth &c as shewn in color, with paneled blind frame to receive Glass plate: the Additions to be of Honduras Mahogany, the Frieze frame 3 Inch stuff; the Plynth inch dovetailed with 3 Cross rails to receive Slab: the Ornament on Frieze frame to be Papier Machie, the remainder with the Mouldings to be carved and the panels of leg to be sunk to receive the same. -

* The whole to be prepared and gilt in Oil Gold, except the fillets, Acorns, berries, and stems of leaves, which are to be burnished and double gilt.

W

A new Slab Cummamara Marble
1 5/8 Inch thickness, with square edges. -

is this
what is
meant

The top of plynth ^{to be of} Scagliola imitation
Cummamara Marble. -

New silvered Plate Glass. 53 1/2 x 30.

King's Closet

^{old} Two Carved and Gilt Glass Frames with Carved
and Gilt Frieze and Palm Heads to be completed
to Working Drawing ^{Pattern} G. 84. the frame to be abatted
to receive Glass and Blind frame of 1 1/2 Inch Pateras
on Blocks of frames and ends of Scroll to be carved

The whole to be repaired and prepared
in the very best manner, and gilt in Oil gold,
except the hollows, turn over of leaves, and
fillets, which are to be burnished and double gilt

Two new Plates of best silvered
Glass 42 x 90.

Two Console Tables

^{new} Two Console Tables. } to be ^{executed} made ^{next} to Working
 Drawing G.85. of well seasoned Honduras Mahogany,
 (the Dolphins which are not colored will be furnished)
 the Ornaments to be carved in Wood (except those
 on the frieze which are to be Papier Machie)
 the Backs, Cross rails, and panel Backs of Glass
 Frames to be of Deal.

It is supposed they are to be new Tables and old Dolphins adapted to them
 the whole repair is understood to apply to them all the rest being new

The whole to be prepared in the very best manner, and gilt in Oil gold; except the fillets, berries, Acorns, and Straps of leaves: which are to be burnished and double gilt.

^{new Verona marble}
 The Slabs to be 1 1/2 Inch thickness of Verona Marble.

Queen's Closet.

Two Carved and Silvered Glass Frames with new Heads to design H.103, and new panel Blind frames; the Heads to be Carved in the very best manner of well Seasoned Lime tree.

The whole to be repaired and prepared in

in the very best manner, and silvered with
Platina in Oil.

^{old} Two plates of Glass 42 x 96, to be
reground and new Silvered.

^{old} Two Tier Tables to be altered to Working Drawing
H. 103: with Additions as shewn in color of
Honduras Mahogany, an Ebony moulding to
be planted on; and a new Inch paneled Blind
frame to be fitted.

The whole to be repaired and prepared
in the very best manner, and silvered with
Platina in Oil.

^{new} Two Slabs of Cunnemara Marble $1\frac{1}{2}$
Inch thickness for top of Tables.

The ~~slabs~~ Plynths to be Scagliola
in imitation of Cunnemara Marble, with Carved
Moulding.

^{old} Two plates of Glass to be
reground and new Silvered.

^{an old} A Silver Toilet Glass to be completed to Working
Drawing H. 104 as shewn in color, the Additions
to be Cast Metal chased and silvered in the best
possible manner, the whole to be mounted with
Nuts, Screws, and an Inch flush panel Wainscot
frame

frame to stand on floor: the lower part prepared to receive the Glass.

The whole of the old Silver to be chased, thoroughly repaired, burnished, & soldered where necessary; and refixed on its frame with Silver headed Pins and Screws as requisite.

A Plate of Glass to be repolished and new Silvered, 26 1/2 x 30.

^B
^{an old}
A Silver Toilet Table to be mounted on an entire new Wainscot frame, the Silver to be cleaned, and thoroughly repaired &c as described for Glass above: and altered to design H.104. by an additional top frieze of Cast metal, silvered and mounted with Iron Rods on a Scagliola Plymth of Cummorra Marbles and an Ebony fillet planted on.

^P
Two Silver Toilet Glasses of different designs to be altered to Working Drawings H.110 and III, with Additions as shewn in color; to be completed in every respect as described in H.104.

^M
The Glasses to be repolished, new Silvered, and edges cut where necessary.

^M
Two Silver Toilet Tables of different designs, mounted on new Scagliola Plymths.

One only requires a new frame to be completed in every respect as described in H.104.

Queen's Drawing Room

Am
A Carved and Gilt Glass Frame with Carved Head
with additions of block and fillet; the
frames to be lined up ^{1 1/2 in} to receive Glass and
blind frame of 1 1/2 Inch.

The whole to be repaired and prepared
in the very best manner, and gilt in Oil gold;
except the fillets, and moulds of frame, fillets,
overturn leaves, and berries on Head Ornament:
which are to be burnished and double gilt.

The Glass 35 x 120, to be repolished
and new Silvered.

Am
A Carved and Gilt Ecliptic front Tier Table to be
altered to Working Drawing I.124. with additions
as shewn in color in Honduras Mahogany, by
cutting the front and back rails across; and
dowling a piece in between to lengthen Tables: the
Plyth mitre dovetailed, the Mouldings and
Ornaments to be Carved, with Ebony fillet planted
on bottom of Plyth; and an inch paneled blind frame.

The whole to be repaired and prepared in
the very best manner, and Re-gilt in Oil Gold;

except

except the fillets, null Mouldings, Riband, and Stick, which are to be burnished and double gilt.

^{new} The Slab to be of Gibraltar Rock to match Table I.125.

The top of Plymouth to be Scagliola to match Ditto.

New plate of Silvered Glass 55 x 31 1/2.

Queen's Ball Room.

Two carved and Gilt Glass Frames with Heads O.134. to be reduced and lined up 1 1/2 Inch to receive Glass and Blind frame.

The whole to be repaired and prepared in the very best manner, and re-gilt in Oil gold, except the hollows, and heads of frames, turn over of leaves, fillets, and berries of Head Canament; which are to be burnished and double gilt.

Two new carved and Gilt Glass Frames with heads but narrower, to match the above.

^{The Old} Two plates of Glass to be Repolished and new Silvered 2 65 x 62.

2.65 x 62

Two.

2 Ditto for head cut from one plate 68 x 61,
 2 Ditto ~~Ditto~~ 63 x 47,
 2 Heads cut from 65 x 60.
 for Ditto

Four Carved and Gilt Pier Tables to be made new to Working Drawings O.141, of well-seasoned Honduras Mahogany with ^{from the} Legs and Tablets (which are not colored will be furnished ^{and to come from}) the Ornaments all to be carved, the Plynths to be mitred dovetailed and an Ebony fillet.

Why? if the
 Pier Tables
 are new

the materials
 will be

then should they be
 called 'Old' Tables?
 and if the tables
 are to be new
 with old parts
 added should it
 not be then

4 new Tables
 according to working drawings
 well-seasoned Honduras
 Mahogany, sides and
 fillets which are
 colored will be
 supplied from Store etc.

The whole to be repaired and prepared in the very best manner, and gilt in Oil gold, except the fillets, small pull Mouldings, and the mane of Lions heads; which are to be burnished and double gilt.

Four new Cinnemara Marble Slabs with square edges 1 5/8 Inch thickness.

The tops of Plynths to be Scagliola to match Slabs.

Four new plates of Glass best silvered, with paneled Blind frame

2 = 62 x 28 and
 2 = 47 x 28.

Queen's Throne Room

Queen's Throne Room

Two ^{old} Carved and Gilt Glass Frames with additional Moulding, Carved Scroll Frieze and Cornice to be completed to pattern P.153 the ^{new} additional Moulding to be continued to the Plymth of Table, and joined to the Pilasters, with one new top.

The whole to be repaired and prepared in the very best manner and gilt in oil gold, except the fillets, berries, and hollows of Bands, which are to be burnished and double gilt.

Two ^{old} Carved and Gilt Circular front Tier Tables to be completed to Working Drawing P.154. with additions as shewn in color of Honduras Mahogany Carved, except Pateras and Ornaments on Brackets under frame which are to be Papier Maché.

The whole to be repaired and prepared in the very best manner, and gilt in oil gold, except the fillets, beads, and ^{hollows} ~~grooves~~ of Legs, which are to be burnished and double gilt.

The ^{olary} Verd Antique Slabs to be repaired and polished.

The tops of ^{new} Plymths to be Scagliola to match Slabs with an Ebony fillet planted on.

Two new best plates of Glass polished and silvered with paneled Blind frame. Sight 57 x 27

Queen's Audience Chamber

Queen's Audience Chamber.

Two ^{old} Carved and Gilt Glass Frames with Carved Cornices to be completed to Pattern Q.170, and gilt in every respect the same as Glass Frame P.153; except that they require 2 new tops, and ^{old additional} Moulding continued over top instead of frieze.

Two Carved and Gilt Tier Tables to be altered to Working Drawing Q.171. with additions of Stouduas Mahogany, covered as shown in color; the frieze frame to have 3 Croft tails, the Plymth mitre dovetailed; and Ebony fillet planted on.

The whole to be repaired and prepared in the very best manner, and gilt in Oil Gold; except the fillets, and straps of leaves, which are to be burnished and double gilt.

Two new Lumentava Marble Slabs 1 1/2 Inch thick.

The

The top of Plyths to be Scagliola to match
Slabs.

Two new plates of Glass silvered with paneled
Blind frames 58 x 25.

Council Chamber.

An old
A Buhl Occasional Table to be repaired,
summed, and french polished; adding a
new Inch plain Spanish Mahogany top, with
an Ebony 2 Inch band inlaid with 2 Platina
lines: the centre covered with Crimson Velvet leather
and stamped border. -

The Mountings to be repaired and
legilt in Armouli and fixed with brass Screws.

King's Closet.

An old
A Writing Table to be altered as shewn by Working
Drawing G.86, by adding new Carved Oak
and leaf Ornament to the legs, and corner of
stretches.

The

The whole to be repaired and prepared in the very best manner, and ~~the~~ gilt in Oil Gold; except the talons, fillets, and stems of leaves, which are to be burnished and double gilt.

The Ebony Buhl border to be repaired and polished, and Centre covered with Crimson ^{leather} Velvet embossed border.

The Ormoulu rim to be new gilt.

The top of Stretches to have a loose frame stuffed and covered with embossed Plush.

Queen's Closet

an old

A Gilt Occasional Table to have a new top added of plain Spanish Mahogany with a ^{a new moulding on top to match 118} moulding carved in the solid and an Ebony 2 inch band inlaid with 2 brass lines the Centre covered with Crimson Velvet and Stamped border.

The

The whole to be repaired and prepared
in the very best manner, and Silvered
with Platina in Oil.

Queen's Drawing Room.

Two Carved and Gilt Pier Tables to be completed
to Working Drawing I.125. with Additions as
shown in color, the Plynt^h to be made of Inch
London Mahogany mitre dovetailed in front; with
~~Carved~~ ^{plain} Moulding on top, and an Ebony fillet
planted on bottom.

The whole to be repaired and prepared
in the very best manner, and regilt in Oil gold;
~~except~~ the fillets, hollows, and ground of piece;
which are to be burnished and double gilt

The Marble Slabs to be repaired and
polished and the tops of Plynt^hs to be

Scagliola

Scagliola to match Slabs.

Queen's Audience Chamber

Two old Carved and Gilt Occasional Tables to
be repaired with the addition of 2 new
cross rails on frame.

Library. N^o 2. and 4. (Queen Elizabeth's Gallery)

^{N^o 2}
^{ob}
Four double fronted Ebony Library Tables to be
altered by adding flush paneled Doors to
front and ends of Pedestals Inch thickness
Honduras Mahogany, to be shammed with $\frac{1}{4}$
by $\frac{1}{8}$ Ebony fillets to receive Book backs: the

Doors

Doors at ends to be hung with Centre Hinges,
and mounted with tumbler Locks.

The bottom part of Centre to be taken away,
and the plymth continued across: two shaped
Brackets to be made to fit each side of
Pedestal, to secure it in the Centre to the top
of Table in lieu of the parts removed.

The front Pilasters to have new Ivory
Ornaments to match those on the end.

A 2 inch Ebony frieze ornamented with
Ivory dowed on top to stand flush with
Pilasters.

The top and front Edge of Square
Moulding; under Frieze to be Veneered with Ebony

A new Mahogany Top lipped with
Ebony 2 inches wide inlaid with Ivory and
Covered with Scarlet Morocco ^{leather} Embossed border.

The whole to be french Polished in the
very best manner and ^{to} Stained where necessary.

Queen Elizabeth's Closet

~~part~~ No 5 Queen Elizabeth's Closet

A new Ebony and Ivory Writing Table to be ^{constructed} made to Working Drawing M.223, (except the ^{from old} Standards) of best seasoned Mahogany with Drawers; the tops lipped with Ebony 1/2 Inch wide inlaid with Ivory: french polished, and lined with Scarlet Leather embossed border: - the bottom Block to be glued in 3 thicknesses, or framed; and mounted with Cope's best Patent Castors: ^{the} frame screwed to block by 4 Iron Rods and Nuts.

No 6 Queen Elizabeth's Gallery

Four Ebony Writing Tables to be altered to Working Drawing N.233, from Old Book Case Desks, the Additions of Honduras Mahogany veneered with Ebony, and inlaid with Ivory french polished.

The Stretcher to be stuffed and covered with Scarlet Cloth, the Top to be lined with Scarlet Morocco leather embossed border

border: the frame to be secured to Block with Iron Rods and Nuts.

Old State Bed Chamber

Two large Library Tables to be repaired, & cleaned or scraped as necessary to receive the black dye in imitation of Ebony: the Pedastals to be inlaid with Ebony and Ivory, the top of Tables to be lipped with Ebony 1/2 Inch wide, and inlaid with Ivory french polished in the best manner; and enriched with Ivory Pateras. The Wire Panels to be repaired new lacquered and lined with fluted Gros du Lopp.

The Tops to be covered with Scarlet Morocco leather, embossed border.

No 3 Octagon Table

King's Drawing Room.

Two ^{old} State Chairs to be altered to Working Drawing
 E. 51. as shewn in color, the new Seat rails,
 brackets on knees, Additions to back legs, and
 Carving; to be executed in the same style and
 Materials as Pattern Chair: the Oak and
 laurel branches on top, to be thickly carved;
 and the Crown and Cushion to be made a
 flat oval on the back.

The whole to be repaired and
 prepared in the very best manner, carved in
 the white; and gilt in Oil gold; except the
 fillets, Stems of Leaves, and Beads of Crown:
 which are to be burnished and double gilt.

The loose frames for Seat and Back,
 to be made of $1\frac{1}{4}$ Inch Oak by 4 Inches wide,
 webbed 2 inches apart; and with the Elbows, to
 be pillow stuffed in fine Canvas with the
 best curled Hair; to contain twelve lbs to the
 foot, and to be covered with Crimson plush
 embossed to design: - A rich bullion fringe 6 in. deep
 to be suspended from the bottom of Seat Rail trimmed with Gimp.

Council Chamber

An ^{old} State Chair, to be completed to Working Drawing
 F.67., with an additional carved ornament on
 top; and front rail.

To be prepared in the very best manner,
 and gilt in Oil Gold; ~~except~~ the fillets, Reeds,
 stems, and bands of leaves; ~~which~~ are to be
 burnished and ~~gilt~~ gilt.

The Seat, back, and Elbows, to be finished
 in every respect same as E.51.

King's closet

An ^{old} State Chair, to be finished in every respect same
 as E.51.

Queen's closet

An ^{old} State Chair, to be finished in every respect same
 as E.51; with the exception of being silvered with Platina
 in oil.

Queen's

Queen's Drawing Room

^{old}
Two State Chairs, to be finished in every respect
same as E. 51.

Queen's Ball Room.

^{old}
Two State Chairs, to be finished in every respect.
same as E. 51.

Queen's Audience Chamber

^{old}
Two State Chairs, to be finished in every respect
same as E. 51.

Waterloo Chamber

^{new Oak}
 Twenty Ottomans, to be made to Working Drawings
 B. 5^{a. b.} of Riga Wainscot of the very best quality;
 the Rails to be of 3 Inch Stuff, with 2 Cross
 rails in each: to be carved in the best possible
 manner, and twice varnished with the best
 Copal Varnish.

The loose Seats to be made of 1½ Inch
 Oak by 4 Inches wide, webbed 2 Inches apart;
 to be french Pillow Stuffed in fine Canvas
 with the best curled Hair, to contain
 lbs to the foot.

68 Back Cushions filled with
 lbs of the best Hair in fine Canvas.

The Seats and back Cushions to be
 covered with fine Crimson Plush, embossed
 to design; and trimmed with Cord and 4
 crimson Silk Tassels to each.

8 Ottomans	7 feet 6 In.	11 Pillows each	32
12 Ditto	5 feet	3 Ditto	30

King's Throne Room

24 ^{new} Stools, to design C.24, to be made of Honduras Mahogany in 2 parts, the Rails to be of 1 1/4 Inch stuff: the upper part to be lap dovetailed, the fillets to be planted on; the rails of lower part to be framed into legs which are to be carved out of the solid in the best possible manner. The Ornaments on rails to be Papier Machée.

The ~~work~~ to be finished and gilt in oil Gold, ~~except~~ the Acorns, fillets, and Talons of Paws; ~~mechanisms~~ are to be burnished and ~~double~~ gilt.

The loose Seats to be made of 1 1/4 Inch Oak by 4 Inches wide, webbed 2 Inches apart; to be french pillow stuffed in fine Canvas with the best curled Hair; to contain lbs to the foot, and to be covered with rich ^{garter blue} ~~purple~~ Velvet.

King's Ante Throne Room.

9 ^{old} Stools to be altered to Working Drawing D.39, the
 Nails

Tails to be lined up and faced with Honduras Mahogany; the fillets planed on: the Oak Ornaments to be Papier Machée.

The whole to be repaired, and prepared in the very best manner, and gilt in Oil Gold; ~~except~~ the acorns, fillets, and talons of Paws: ~~which~~ are to be burnished and double gilt.

New loose Seats to be made and finished in every respect the same as C. 24.

King's Drawing Room.

18 Stools. to be altered to Working Drawing E. 52 with Additions in Color of Honduras Mahogany, ~~except~~ the Oak leaf, roset and pendant Ornaments, ~~which~~ are to be Papier Machée: the Lion's Paw feet to be cast from model furnished, lacquered to match gilding, and fixed as a Socket to a stool.

The whole to be repaired and prepared in the very best manner, and gilt in Oil Gold, ~~except~~ the acorns, berries, and hollows of legs, ~~which~~ are to be burnished and double gilt.

New loose Seats finished same as C. 24 except to be covered with crimson embossed plush.

Council Chamber

18 Stools to be altered to Working Drawing F. 68, from Old Chairs; the front legs to make 13 Stools by adding new side rails: the back legs to make 43 others to match, by adding new front (and back) rails; $\frac{1}{4}$ Inch Mahogany false rails with Mouldings to be mitred and planted on all round: the Ornaments to be Papier Machée.

The whole to be prepared in the very best manner, (and gilt in Oil ^{burnished} gold; except the fillets, beads, and Acorns; which are to be burnished) and double gilt.

The loose Seats to be benelled into frame to save height, and finished in every other respect the same as C. 24. except to be covered with crimson Embossed Plush.

King's Closet

8 Stools to be ^{formed according} altered to Working Drawing from Old Chairs, in every respect the same as F. 68.

Queen's Closet.

Queen's Closet

^{old} 12 Stools to be altered to Working Drawing H. 100

to include those with Additions as shown in color.

These are all
Stools already in
existence and now
to be put out
as the preceding in Oil.

The whole to be repaired and prepared
in the very best manner, and silvered with Platina

same as E. 52

The loose Seats to be made of 1/4 Inch
oak by 4 Inches wide, webbed 2 Inches apart; to
be french pillow stuffed in fine Canvas with the
best curled Hair; to contain lbs to the foot,
and to be covered with crimson embossed plush.
except round with blue embossed plush

Queen's Drawing Room

^{old} 20 Stools to be altered to Working Drawing I. 123.

The same as
last observation with Additions as shown in color.

The whole to be repaired and prepared
in the very best manner, in every respect same as E. 52

New loose Seats finished in every respect
same as H. 100.

Queen's Ball Room

3 ^{old} Carved and Gilt Settees to be altered to Working Drawing O.142 with Additions of Honduras Mahogany as shewn in color, except the roset and pendant ornaments which are to be Papier Machée: the Lion's Paw feet to be Cast from model furnished, lacquered to match gilding; and fixed as a Socket castor secured with gilt head Screws: the Additions to Back legs to be carved equal to front.

The whole to be repaired and prepared in the very best manner, and gilt in Oil ^{& burnish} gold, except the fillets, hollows, head on Rails, and berries: which are to be burnished and double gilt.

New loose Seats to be finished in every respect same as H.100.

5 ^{new} Carved and Gilt Settee to be made new of Honduras Mahogany with 3 Cross rails, to match the above in every respect. ^{of Honduras Mahogany}

This should begin in a line with the beginning of the above Stem or in front, to be made new to match in every respect it might seem an explanation relating to that Stem

4 ^{new} with only 3 legs in front -
Four Ditto, 4 Feet in Length with 3 legs

1 same size as above

14 with 3 legs in front 4 ft long only

12 Stools

^{old}
 12 Stools to be altered to Working Drawing
 in every respect the same as O.142. with new
~~low backs, and low seats omitted~~

Queen's Throne Room

^{old}
 16 Stools to be altered to Working Drawing P.157
 with Additions as shewn in color.

The whole to be repaired and prepared in
 the very best manner, in every respect same as E.52.

New loose Seats to be finished in every
 respect same as H.100.

Queen's Audience Chamber

^{old}
 16 Stools to be altered to Working Drawing Q.174.
 with Additions as shewn in color.

The whole to be repaired and prepared in
 the very best manner in every respect same as E.52

New loose Seats finished in every respect
 same as H.100.

^{Do}
 Two to be made new of Honduras Mahogany
 to match the above.

State Ante Room

^{old} 12 Stools to be altered to Working Drawing R.185. with
Additions as shewn in color.

The whole to be ^{finished} repaired and prepared in
the very best manner same in every respect as E.52.

New loose Seats finished in every respect
same as H.100.

Four new ^{Banquets} Stools with ~~6~~ Legs to match in
every respect the above.

The Vestibule

^{new} Thirteen ^{Banquets} Oak Stools to be made to Working
Drawing W.251, of Riga Wainscot of the
best quality; the Rails $1\frac{1}{4}$ Inch with 2
cross ones to each. (if jointed to be ploughed
and tongued)

The top $1\frac{1}{4}$ Inch stuff, lined up
to Drawing and ^{finished} polished and

Queen Elizabeth's Closet

divide these into the respective Rooms

^{new} Sixteen Stools to be executed to Work Room
 Drawing M of well seasoned Lime
 Tree to be stained and french polished
 to imitate Ebony and enriched with Ivory
 Ornaments.

The new loose Seats to be finished
 in every respect same as H.100. with the
 exception of being covered with Scarlet
 Cloth.

King's Throne Room

Six new Spring Blinds of the best fine Hollana,
fitted and fixed complete with Brown Silk Cord
and Tassels to pattern; and framed head
covered with same Material, to fit upper part
of Windows. — Height ^{ft} 13 ⁱⁿ 5,

~~Nett Measurements of 10^o 4 of 4.7⁵/₈~~

~~Widths~~ 1 - 4 - 8 and

1 - 4 - 7³/₄

Ante Throne Room.

~~Two~~ Two Ditto to match in every respect the above.

Height and width of windows the same.

King's Drawing Room

~~Five~~ Five Ditto to match in every respect the above

Height of ^{great} windows ^{ft} 15 ⁱⁿ 10 — Small windows 12 ⁱⁿ 8³/₄

~~Nett Measurement~~ { 2 of 5 ⁱⁿ 7 }
~~of windows~~ { 2 - 2, 10³/₈ and } Width
1 - 3 ⁱⁿ 7¹/₈ }

Council

Council Chamber

^{new} Two Pair best fine White Hollana Curtains, headed
to shape of Windows of 60 Inch Linen; fitted
and fixed complete.

Height of windows $15\frac{1}{6}$ width $5\frac{3}{4}$

King's closet

One new Spring Blind to match those in the
Kings Throne Room. Height $12\frac{1}{6}$ width $5\frac{3}{4}$

Queen's Closet

^{new} One Ditto to match, same as the last Height and
width the same.

Queen's Drawing Room

^{new} Two Pair best fine White Hollana Curtains to
match those of Council Chamber Height $15\frac{1}{6}$ width $5\frac{3}{4}$

Library N^o 1 (Reading Room)
(old State Bed Chamber)

Four new Spring Blinds to match in every respect
those in Kings Throne Room. Height
shape wanting.

N^o 2. adjoining

Eight Ditto to match in every respect Height
shape wanting.

N^o 3. Queen Elizabeths Closet

Four Ditto to match
shape wanting.

N^o 4. Queen Elizabeths Gallery

Two Ditto to match.

shape wanting.

Queen's Ball Room

^{new}
Two Pair best fine White Holland Curtains to
match in every respect those in Council Chamber
height 15. 6 width 5. 7 ¹/₈ each

Queen's Throne Room

^{new}
Three Pair Ditto to match in every respect
height width

Queen's Audience Chamber

^{new}
Three Pair Ditto to match in every respect
Height width

King's Throne Room

^{Old}
Two Ebony and Buhl Cabinets to be altered to design C. 29, to be properly repaired; the Door panels to be pumiced and cleaned; and all the Ebony parts french polished. The Ormolu Ornaments to be taken off and regilt in the best manner, and fixed on with gilt head Screws. -

King's Ante Throne Room.

^{Old}
Two Ebony and Buhl Cabinets to be properly repaired; the door frames and Panels to be pumiced and cleaned; and all the Ebony parts french polished: the inside to be lined with red Paper, and New Shelves in each having their front edges veneered with Ebony.

The Ormolu Ornaments to be taken off and regilt, and fixed on with gilt head Screws in the very best manner.

King's

Kings Drawing Room

^{old}
An Ebony Cabinet to be repaired and french
polished, the Japan panels to be repaired
and varnished; the Centre to have a new
Panel supplied.

To be altered to Drawing E. 58. with
Chased Mouldings round top, and centre panel.

^{new}
An Ebony Plymth, the front and ends
of top veneered 8 Inches on, the Centre stained
and polished; the ground to be Inch
Stonduas Mahogany: and mounted with
Chased Metal Mouldings.

The whole of the Ormoulu mountings
to be gilt in the best possible manner, and
fastened with gilt head Screws.

^{new}
A ^{slab} Teacoliola, $1\frac{5}{8}$ Inch thickness
in imitation of Black and gold Marble
Slab to shape, to be enriched (with the
gold as much as the imitation will allow.)

An

An Ebony Cabinet to match the other (but smaller) to be repaired, polished, and all the ornaments regilt; with new Plymth and Teagliola Slab as described in the last, except the Additions as shewn in color in Drawing E. 58.* with plain bead Moulding on top, and an Ebony frieze to form a sunk Panel: mounted with chased metal ornaments and Pateras cast from the larger Cabinet all to be gilt to match in Ormoulu.

Council Chamber

An Ebony Buhl Escritoire Cabinet to be properly repaired, the Buhl work to be pruniced and cleaned, and all french polished, the Mountings to be taken off and repaired where necessary, and regilt in Ormoulu: and fixed with gilt head Screws.

An $1\frac{1}{4}$ Inch ^{new} Linnemara Slab to project $\frac{3}{8}$ Inch round front and ends and

1 $\frac{5}{8}$ Inch at the back.

Things Closet.

An old

A Tulip wood Marquetry Cylinder front Escritoire
to be repaired, french polished, and altered
by adding two legs mounted with foliage feet
and ornaments; which are also to be added to
the original Legs as shewn in Drawing
G.90.

The French trophies in the Centre
to be replaced by W^{IV}R encircled by Oak
and Palm Wreaths of English maple,
engraved: and Purple wood ground.

The Armoulu Mounting to be repaired
and regilt, and fixed by gilt head Screws.

An old

A shaped front rich Marquetry Cabinet to be
repaired and polished, and the Drawer new-
lined with Morocco Paper.

The

The Mounting to be taken off, repaired,
and regilt in Ormoulu and fixed with gilt head Screws.

The Verona Marble Slab to be repaired,
and new polished.

A new Purple Wood (Shaped) Plynth
to design of Honduras Mahogany ground, to be
shaped same as the Slab; enriched with a
Metal chased Moulding on edge, and gilt in Ormoulu.

Two ^{and} Shaped fronts Marquetry Encoigneurs to
match, to be repaired, and new gilt in Ormoulu
also new Plynth to be as described above.

Queen's Drawing Room.

Two Zebra ^{wood} Japan Cabinets to be repaired and
polished in the very best manner.

The Ornaments to be taken off and
regilt in Ormoulu, and fixed on with gilt head
Screws in the very best manner.

The

Queen's Throne Room.

~~1000~~
 An Ebony Japan Cabinet to be repaired, cleaned,
 and french polished in the very best
 manner, to have an ^{new} Ebony Plymth with ^{and built}
 Cantee Corners; and rich chased Ormoulu
 Moulding on its edge: the top of Plymth to
 be veneered with Ebony 10 Inches from the
 front edge, and 9 from the ends; the frame
 and top to be made of Inch Honduras
 Mahogany, with 2 Cross tails on the former.

The Ormoulu Ornaments to be taken
 off and regilt, and fixed with gilt head Screws.

The locks to be properly repaired.

Queen's Audience Chamber.

Two ¹⁰⁰ Tree front Cabinets to be repaired, cleaned

(and)

See also the ...

and french polished in the very best
manner: the Plymth to be Inch Honduras
Mahogany with a Cross Nail of Deal, the
Plymth, frame, and top of Ditto to be
veneered with Ebony with a rich Carved Mould-
ing on its edge.

The Ornament Ornaments to be taken
off and regilt, and fixed with gilt head
Screws.

King's Throne Room

Six Pair ^{new} Window Curtains made to Design C
 17 of rich Easter Blue Velvet containing 5
 Breadths each ^{ft. in} 16.8 in length headed on tapes
 with large Brass Rings trimmed with ^{oak pattern} Gold
 Lace 1 3/4 Inch wide laid on within the edge
 lined with Tammy ^{lined with a} and half Breadth of Gros
 de Naples

To be looped with 3 Yards of Gold
 rope and 2 Tassels to each

Six Valances of same material trimmed
 with a rich Gold Bullion fringe 7 Inches
 deep on top and bottom with 2 yards of
 Gold Rope and 2 Tassels suspended
 from ^{each} Corner

why should the
 word rich be
 omitted

The Six Panels of Room to be Canvassed,
 Lined ^{with Elephant Paper} and hung with Rich Crimson
 Velvet to pattern 21 Inches wide
 to contain 90 Yards

Ante Throne Room

King's Ante Throne room

Two Fair ^{new} Window Curtains to be finished in every respect same as C.17 excepting Fringe which will be ^{is to be} Silk Bullion (Gold color) instead ^{of Gold} of Gold.

W. ...
need that be added

Two Panels of Room to be canvassed to in every respect same as the King's Throne Room, and to contain 30 Yards.

$$\begin{array}{r} 90 \\ 126 \end{array}$$

Two ^{new} Window Cornices to match the every respect C.31.

King's Drawing Room

The Walls of Room to be canvassed, lined with Elephant Paper, and hung with rich figured ^{with red ground} Crimson Silk to pattern, 21 Inches wide, and to contain 340 Yards. ~~...~~

340 Yds of new green silk to further to

Council Chamber

The Walls of Room to be Canvassed, lined with Elephant Paper, and hung with rich figured Crimson Silk to pattern 21 Inches wide and to contain 218 Yards.

Kings Closet

The Walls of Room to be Canvassed, lined with Elephant Paper, and hung with rich figured Crimson Silk to pattern 21 Inches wide and to contain 150 Yards.

Queen's Closet

The Walls of Room to be Canvassed, lined with Elephant Paper, and hung with rich figured Crimson Silk to pattern 21 Inches wide and to contain 200 Yards.

Queen's Drawing Room.

The Walls of Room to be canvassed, lined with
Elephant Paper, and hung with rich figured
Drab Silk to pattern 21 Inches wide and to
contain 300 Yards.

Queen's Ball Room.

The Walls of Room to be Canvassed, lined with
Elephant Paper, and hung with rich figured
Crimson Silk to pattern 21 Inches wide
and to contain 300 Yards.

King's Drawing Room

230 Feet of ^{old} Gold Moulding, to be reduced in thickness, and altered to pattern by adding small bead. ~~filled and fixed with corner blocks at the hollows of the panels~~

To be repaired and prepared in the very best manner, and gilt in Oil gold; except the Straps, and Beads; which are to be burnished and double gilt.

30 Feet ^{new} Gold Moulding to match the above.

4. New Angle Ditto 13. 6 1/2 and new Blocks for Ditto; to pattern.

Council Chamber.

244 Feet of ^{old} Gold Moulding and 5 Feet in Angle Pieces, to be repaired and prepared in the very best manner, and regilt in Oil gold; except the hollows, and turn over leaf of hawks: which are to be burnished and double gilt.

New Blocks for Ditto to pattern.

King's

King's Closet

151 - ^{ft} ft - of Gold Moulding, and 45.2 ^{ft. in} in
 Angle Ditto; (^{ft. in} 11.3½ each) to be finished in every
 respect same as the last.

New Blocks for Ditto to pattern.

Queen's Closet

167 - ^{ft} ft - of Gold Moulding to be reduced in
 thickness to pattern, and silvered with Platinum
 in Oil.

7 ft - New Ditto to match

New Angle Ditto to pattern. (11 ft 9 in each)

New Blocks for ditto to pattern.

Queen's Drawing Room

222 ^{ft} ft Gold Moulding to be finished in every respect
 same as that in King's Drawing Room.

86 ft.

Is the word
"Gold"
intentionally
omitted, it
appears always
in the previous
Items

86 ft. new Moulding to match to pattern
4 New Angle Ditto to pattern (13.4 ^{ft in} each)
new Blocks for ditto to pattern.

Queen's Ball Room

308 ft ^D Gold Moulding to be reduced in thickness ^{to pattern} and
finished same as the preceding.

152 ft New Ditto to match with Papier Machiee Ornaments

4 Angle Ditto (P. 10 ^{ft in} each) to be finished same
as the above in every respect.

20 ft New Angle Ditto to match the last with
the Ornaments of Papier Machiee.

New Blocks for ditto to pattern.

for number

Queen's Throne Room.

150 ft ^D Gold Moulding

to match what followed

96

67

The Grand Reception Room

Four large Brass Susters - to be made from parts of 3 ^{old} Susters, originally carrying Lamps - to be made to design, A-190, with additions as shown in Colour - the parts for which a pattern is not required for casting (as far as can well be ascertained) are as foll^o. underneath - to contain 60 Candles each, (10 Arms ⁱⁿ lights each), to be mounted on strong Iron Rod, masked by palm and other Leaves, and suspended by single Chain 12 ft long - each

The New parts to be cast as light as possible from well finished patterns - the additions to be connected by brazing, with hard solder where practicable - the other parts to be fitted with strong screws, to be cast and chased equal to old parts: the Nozzles ground to one socket: the holes not required in old parts to be screwed up

The small fillets, straps, Ends and

End

Eyes, of leaves, the leaves and other small parts, only - to be furnished - All parts to be lacquered in the very best manner, ⁱⁿ imitation of Ormoulu; the old parts to be repaired -

Boxes for bottom	a - 2	f - 2	o - 1	ditto
Leaf ornaments to boxes	b - 2	2-b - 5	1-4 - 10	
Round boxes with eyes	c - 2	1-J - 1	2 - 32	
Small boxes for eyes	d - 2	l - 1	6 - 104	
Leaf ornaments - 2	e - 10	m - 1	11 - 34	

f - 2 brass ornaments - (see notes and eye small in the drawing)
 2-b - 5 leaf
 1-J - 1 box
 6 - 1 boxes filled with leaf ornaments
 m - 1 boxes, same as number 11

The King's Throne Room

^{new}
Four Large, New brass, Dragon Lusters, 24 Lights each to be executed to design C-28. suspended by 10 chains and cast from well executed models, as light as possible: chased, and lacquered in imitation of Ormoulu; the nozzles to be ground to one socket, and fitted with nuts and screws, in the best possible manner.

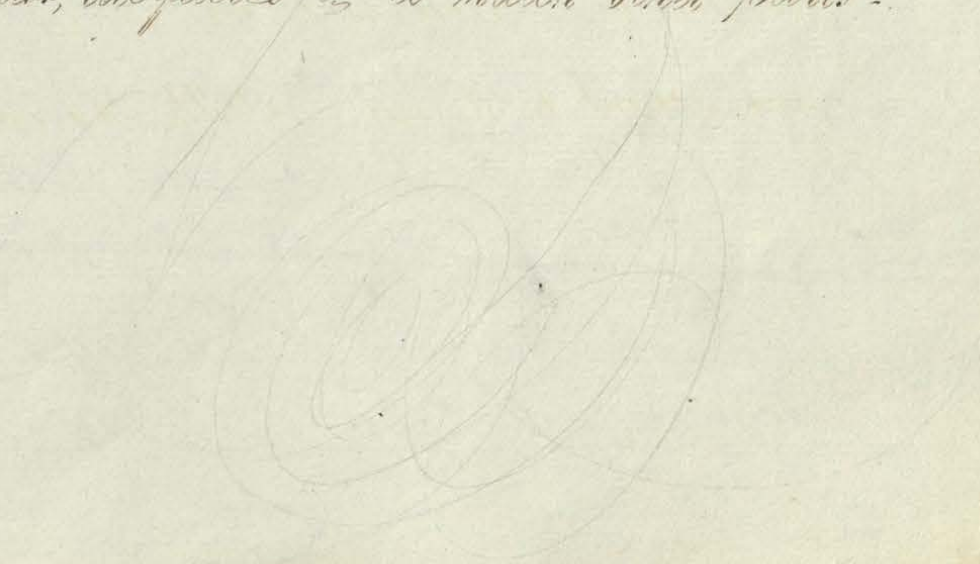
Waterloo Chamber

Design - See Jeffrey's

Four New Large Brass Lustres, for 75 Lights each, to be executed to Design B-7- suspended by six chains, to rustic ornaments, and continued with single chain to the ceiling - The panels of body, to be enriched, with the order of the East, alternate Civil and Military - To be cast and finished in every respect same as - Luster, C-28

The King's Drawing Room

^{an old}
A Large Brass Chandelier, to be altered by adding 30 New Branches for Candles instead of Lamps - to Design, E.54 to be cast, lacquered &c to match other parts.



Council Chamber

^{old} An ^{to be altered & improved} Large Brass Lustre, ^{to be altered & improved} (by part from the ^{old} lustres mentioned in Design A-190) ^{to be recut to} Design F-71, with ^{new} additions as shown in colour - supported by 6 chains: to be cast, fitted and finished in every respect same as Lustre - A-190 ^{to be altered & improved} - ^{the sample for cast to} ^{fitted beyond to our best}

See addition

The Queen's Drawing Room

A Large Brass Mounted, Cut Glass Chandelier - for 50 Lights, to be made to Design I-119 - ^{mentioned in Design A-190} ^{old} various ^{the parts} brass mountings, and ^{old} cut glass ornaments; with additions, which are not lettered or numbered (with the exception of the following, which are also to be new)

- viz - C - 1 brass leaf
- G - 2 do. flowers for tops of gallery
- W - 8 pendant cut glass stars -

To be cast, fitted and finished in every respect same as Lustre A-190-

The

The Cut Glass, to be cleaned, new cut where chipped, and entirely new wired, with best silvered wire - arranged and hung, to Design I-119, the tendrils, to be drilled and fitted, to receive the same

The Queen's Ball Room

Design - brass - cut glass
with wire -

^{old} Two Large Brass Mounted Ormolu, Cut Glass Chandeliers for 30 Candles each - to be altered to Design, O-135 with additions, as shown in colour, the parts not lettered or numbered - with the exception of the following, which are also to be ~~made~~ New - viz -

- C - 2 - ornamental leaves with scroll Tendril
- " - 1 - Brass plates -
- G - 1 - Brass plate
- L - 2 - ornamental scrolls
- K - 2 - Wreaths of leaves -
- S - 2 - ~~leaf~~
- X - 1 -
- W - 1 - Brass Basin

To be ~~cut~~ fitted ^{repaired} and finished in

Wm

Every respect same as Lustre - A. 190 -

New Cut Glass. to match the old:
as far as can well be ascertained. - the new parts required are:
the following - viz.

- a - 1 Cut glass pane
- f - 1 do. fast.
- * a - 30 do. Saucers and Drops same as the other 30.
- * n - 5 do. Bayonets.
- * o - 20 do. Cords to receive Bayonets.

The old cut glass, to be changed, new cut when shipped & in every respect same as - I-119 arranged and hung to Design - O, 135

The Queen's Throne Room

A Large Brass Lustre (in part to be made from the 3 Lustres mentioned in design A-190) for 16 Lamps, to

be

to be made to Design P- 162 with ^{new} Additions,
 (New Arms, Chain, &c.) as shown in Colour - The base Lamp
 to have new ^{Chains} hangers to each and the Reservoir, Enlarged
 as also shown - To be cast, fitted and finished in every
 respect same as Luster A-190 -

The Queen's Audience Chamber

A Large Brass Luster (in part to be made from the 3 Lusters
 mentioned in Design A-190 / for 16 Lamps, to
 be made to Design Q- - with ^{new} Additions (new
 Arms, Chains, &c.) as shown in Colour - To be
 cast, fitted, and finished in every respect same as
 Luster - P.

44

Grand Reception Room

^{old} Four Tripod Candelabra ^{for 11 lights each} to be altered to Working Drawing A.193 with Additions in color of Honduras Mahogany, with an Ebony moulding planted on Plymth: the Mouldings and leaves to be carved, the Pateras and Ornaments to be Papier Machée; and the additions to be secured with an Iron rod and Nuts.

To be gilt in Oil Gold, in the very best manner, except the fillets, and Mouldings; which are to be burnished and double gilt.

The top branches from A to be cast Metal, chased equal to pattern; and lacquered to match in color the Gilding: the Nozzles to be ground to one Socket, and the whole fitted with strong Iron rod, Screws, and Nuts.

Waterloo Chamber

^{new} Four Candelabra for 12 Lights each, to be executed to Drawing B.10 of Military Trophies and
Order

Order of Bath; to be Cast in the best and lightest possible manner. (2 Military and 2 Civil Orders); The Nozels to be ground to one Socket, all the detached Ornaments to be fitted with Nuts and Screws, and mounted on a strong Iron Ped: chased and lacquered in imitation of Ormoulu.

Kings Throne Room

^{Two} Pedestal Candelabra richly carved and gilt in Oil and burnished Gold of 10 Lights each, to be executed to Working Drawing C.30. and made of the best seasoned Mahogany; carved in the best possible manner: the Ebony Plinth to be planted on, and french polished

The Arms, berries, balls, fillets, talons of claws, rims of Sarter, Cross, and upper falling row of Palm leaves (marked A): to be burnished &c.

The top branches from A to be finished in every respect same

same as A.193.

^{old} Two ^{for 10 lights} Candelabra for Chimney Piece, each to contain
 10 Lights to be altered from Old Fire Dogs to
 design C.27.a. and Model: by adding new cast
 Branches &c; the Nozels to be ground to
 one Socket, the additions and figures
 properly fitted and fixed with strong nuts
 and screws.

The parts now Bronzed are to be new
 dipped — *query shall this be gilt or lacquered*
only

An Ebony Stand fitted to Ditto
 lined with Baize.

^{old} Two ^{for 10 lights each} Column Candelabra to be altered to Drawing
 C.27.b., to carry 10 Lights by adding new
^{to be as shown in color;} Thyaths, the branches the same as C.30.:
 the Nozels, Bronzed parts, and Ebony
 stand, to be finished in every respect same
 as the above. *shall this be gilt or lacquered,*

Kings Ante Throne room

Four ^{old} Circular Pedestals for Candelabra to be altered to Working Drawing D.43* by adding Mouldings, Papier Machee ornaments, Paterns, and an Ebony fillet planted on base.

The ground of Pedestal to be japanned in imitation of Tortoiseshell, buhl, gold, and silver ornaments similar to column F: the parts to be japanned black, the others as shewn; to be gilt in Oil Gold: except the Stem, and ends of leaves, which are to be burnished and double gilt.

The tops of Pedestals to be sunk to receive the 2 Octagon and 2 Angular dishes, with 3/4 Inch Screw Plates.

A Pair of ^{old} Buhl Gueridons to be altered into Candelabra to Working Drawing D.43, by adding new cast metal ornaments, and 11 Branches for Candles; to be chased equal to other ornaments, and lacquered to match the Vermorel. The Nozels to be ground to one Socket,

The

The whole of the Ormoulu Ornaments to be cleaned and restored, and all the Buhl work repaired, pumiced, and french polished.

The top of Guericom to be fitted with strong Screws to the Ornaments at the bottom of tripod feet, to form a Dish.

A Pair of ^{old} Buhl Guericoms to be altered into Candelabra to Working Drawing D.43* as above, by adding 11 branches, and all the Moulding, Ornaments, Caps to in Metal; and lacquered to match with the addition of Buhl and Ebony as shewn black; the Old to be repaired, pumiced, and polished; and fitted with Octagon dish same as above.

King's Drawing room.

Two ^{old} Circular Pedestals for Candelabra, to be altered to Working Drawing E.55. by adding Moulding, Papier Machie ornaments, Pateras, and an Ebony fillet planted on base.

The

The ground of Pedestal to be Gilt in
Oil gold in the very best manner.

^{old} Two Bronze Boy Candelabra to be altered to drawing
E. 55. by adding 10 light branches to each, to be
cast: nozels fitted, lacquered &c &c same as C. 30
branches, the additions as shewn to be Cast and
finished equal to old parts, and fitted with
Iron Rods, Nuts, and Screws the parts
marked thus X to be lacquered to match
branches.

^{old} Two Ditto for Tables to be altered and finished in every
respect as above.

^{old} Two Bronzed Chimney Candelabra — (see next Page.)

Council Chamber

^{old} Four Circular Pedestals to be altered to working
drawing E. 72, in column, by adding a new top
of Honduras Mahogany; the Ornaments and
leaves to be Papier Machée, the Plymth to be
reduced.

^{old}
 Four Bronze Boy Candelabra for 10 lights each for
 Pedestals, to be altered and finished same in
 every respect as E. 55.

Kings Drawing room (omitted) θ

^{old}
 Two Bronzed Chimney Candelabra ^{for 7 lights each} to be altered
 to Design E. 252 the Additions to be cast,
 chased &c to match as shewn in color the
 Stand and lights to be lacquered in
 imitation of Ormolu. the Lion's Heads,
 Festoons, and Mouldings to be Bronzed.

Kings Closet

^{old}
 Four Bronze Boy Candelabra for 10 lights each
 for Tier Tables to be altered and finished the
 same in every respect as E. 55.

Queen's Closet

^{old}
 Two Silver Figure Gueridons to be altered into
 Candelabra by adding 6 lights each to design

*any the additions I
have only considered
as having
to this paper*

H. 107. as shown in color the branches and small
leaves to be cast ^{in metal}, Chased and silvered: the Nozels
to be ground and fitted to one Socket, the top
Ornament in blue to be applied.

To be properly repaired, cleaned, soldered,
and fitted with Strong Screws and Nuts.

old
Two Silver Foliole Geridons to be altered into
Candelabra for 6 lights each to drawing H. 109,
and finished in every respect the same as H.
107: except to be mounted on an Iron rod, and
Blocks.

old
Two Silver Figure Fire Dogs to be altered into
Candelabra for 6 lights each, to drawing H. 108,
and backed out similar to model.

To be repaired, fitted, fixed, &c and finished
in every other respect same as H. 107. except to be
mounted on a Carrara Marble Plinth.

old
Two Silver Fire Dogs to be altered into 6 light
Candelabra each, to design H. 112, with the addition

of.

^{metal} of Shells and Blocks ^{the} ~~metal~~ ^{according} Silvered to Model:
and finished in every other respect the same as
H.107. with strong Iron rods ^{and} Nuts.

^{old} Two Tripod Pedestals, with Rams
head Corners to be repaired if necessary and
Silvered with Platina in Oil.

^{new} Two Shaped Cunnemara Marble Slabs
1 1/2 Inches thick.

^{new} Two Shaped Scagliola Plynths in
imitation of Cunnemara Marble, with Carved
Mouldings to match Tables.

Queen's Drawing room.

^{old} Four Tripod Candelabra Stands to be altered
and finished to Drawing I.121a and Model,
prepared; from B to C in Drawing the
Additions to be carved -

The lower Stand from C downwards
in drawings, two only to have additions as
shewn in Color with Ebony Plynth.

T.

all this is
supposed to
relate to the
Four Stands
at the bottom
of the page
next before
this

To be repaired and prepared in the
very best manner, and gilt in Oil and
burnished gold.

Two new Stands from C downwards
to match in every respect.

The top and bottom Stands to be
secured with Iron Rods. the

The ^{old} Brass mounted Cut Glass Lights
for 11 Candles each, altered to design I.121.a
by adding new Cast Metal leaf and other
ornaments as shewn in color; the Additions to be
connected by brazing, where it is practicable:
the other parts fitted with strong Screws, to be
cast equal to old parts; and all to be lacquered
in the best manner to match the Stands.

The Cut Glass to be cleaned, new Cut where
chipped, and entirely new wired with best
Silvered wire; arranged and hung to small
design: the tendrils to be drilled and fitted
to receive the same.

Queen's Ball Room.

Queen's Ball Room

Four new Metal Columns designed to apply ^{old} Ormoulu
and Cut Glass Branches, and other Ornaments
in Store. The Column and its Ornaments to be
cast as light as possible, chased equal to
branches; and all lacquered in imitation of
Ormoulu.

The ^{old} Cut Glass Ornaments to be cleaned,
new Cut where chipped, new wired the same as
I. 121. a. and all the Metal parts from A upwards:
to be Silvered instead of lacquered.

Queen's Throne Room

Four ^{old} Tripod ^{Stand} ~~columns~~ Candelabra for 10 lights each,
to be altered to Drawing P. 164: with additions in
color of best seasoned Mahogany, with an
Ebony Moulding planted on Plymth; the
Mouldings and banded leaves of Cap to be

carved, the Paterns and Ornaments to be
 Papier Machee; and the Additions to be
 secured with an Iron rod and Nuts.

To be gilt in Oil Gold in the very
 best manner, except the fillets and Mouldings
 which are to be burnished and double gilt.

The ^{own} top branches from A. to be cast
 Metal, chased equal to pattern; and lacquered to
 match Gilding: the Nozels to be ground to our
 Socket, and the whole fitted with strong Iron Rod,
 screws and Nuts.

Queen's Audience Chamber

Four ^{old} Tripod column Candelabra for 10 lights each
 to be altered to Working Drawing Q. 173. with
 additions in Color of best seasoned Mahogany.
 to be finished the same in every respect as the
 above. except that the parts will be carved.

Waterloo Chamber

^{new} Eight large Brass Brackets for 15 Candles each to be executed for every respect the same as B.7 Lustre to Drawing B. prepared with Staple and Socket to fix to Walls.

^{new} Four Ditto (but smaller) for 10 Candles each

^{new} Eight Ditto for 7 Candles each

State Ante Room

^{old} Four Bronzed Carved Brackets to be repaired and gilt in Oil and burnished Gold and fixed on Pilasters to receive ^{old} Pedestal Vase Lamps with ^{new} brass turned Nozels and Sockets the Brass Lamps to be altered by adding small leaf and Pine Stands and new Burners to Drawing R. 187

^{old} Four Pedestal Candelabra Stands to be altered,
 repaired and gilt in Oil and burnished gold, and
 mounted on Iron Rod and brass turned Nozels
 and Sockets - the addition to be made

Four ^{old} Brass Lamps to be altered by
 adding new Burners to match above.

Four ^{old} Brass Lamps for Chimney to be
 altered as above but on Square brass Plymth, to be

St Georges Hall.

Four new Brass Palm branch Brackets to Drawing S. 191
^{with socket and}
 prepared to receive old Gothic Lamps. The Branches
 to be Cast and fitted to a strong Iron Bracket
 which is to be fixed to the Wall and to project at bottom
 6 Inches and at top 15 Inches

Eight Gothic Lamps to be altered as shown
 in drawing adding new Burners and
 lengthening the Arms of present burners 5 Inches.

Eight Gothic Brass Brackets for 6 Candles each fitted to
 Sockets of Shields ^{all} each mounted to its respective
 Place.

To be Cast in the best possible manner,
 same as B. 7. Lustre.

Ornaments

Grand Reception Room - Design A -

- A - 2 Bottom Cup Ornaments
- B - 2 Ornament, with 10 hollows
- C - 2 Round base with ~~leaf ornaments~~
- D - 2 Small hollows with 2 square mouldings
- 2 - E - 10 leaf ornaments -
- F - 2 Scroll do.
- 2 - G - 5 leaf - do.
- 1 - J - 1 Caps -
- L - 1 Rollers filled with leaf ornaments -
- N - 1 Sea (ornamental) shells +
- O - 1 det. ornamental leaves -
- 1 - R - 10
- 2 - S - 32
- 6 - T - 104

3 Iron Rods with eyes & nuts - to match the

Library Book Room -

^{old}
Four Pedestal Candelabra Stands to be altered
repaired and gilt in Oil and burnished gold, and
mounted on Iron Rod and brass turned Nozels
and Sockets ~~the addition to be covered~~

^{old}
Four Brass Lamps to be altered by
adding new Burners to match above.

^{old}
~~Four~~ Four Brass Lamps for Chimney to be
altered as above but on Square brass Plymth,

St Georges Hall.

Four new Brass Palm branch Brackets to Drawing S. 1.
^{with socket and}
prepared to receive old Gothic Lamps. The Brass
to be Cast and fitted to a strong Iron Bracket
which is to be fixed to the Wall and to project at bottom
6 Inches and at top 15 Inches

Eight Gothic Lamps to be altered as s.
in drawing adding new Burners and
lengthening the Arms of present burners 5 Inches.

Eight Gothic Brass Brackets for 8 Candles each fitted
Sockets of Shields ^{all} each mounted to its respective
Place ^{to be fitted to the}

To be Cast in the best possible manner,
same as B. 7. Lustre.

Chandeliers

Grand Reception Room - Design A -

- A - 2 Bottom Cup ornaments
 B - 2 Ornament with 10 hollows
 C - 2 Round base with ~~leaf ornaments~~
 D - 2 Small hollows with 2 square mouldings
 2 - E - 10 leaf ornaments -
 F - 2 Scroll do.
 2 - G - 3 leaf - do.
 1 - J - 1 Cap -
 L - 1 Rollers filled with leaf ornaments -
 N - 1 Iron (ornamental) fasteners -
 O - 1 set. ornamental leaves -
 1 - 2 - 10
 2 - 2 - 32
 6 - 2 - 104

3 Iron Rods with eyes & nuts - to match the
 others -

Small Ball Room -

80
 90 Queens Ball Room

Two. Old large Brass Mounted Ornamental
 Cut Glass Chandeliers for 30 Candles each - To be altered to
 design - with the additions as shown in Colours - The packs
 not Lettered or Numbered to be New - ~~scraps~~ the Undermentioned
 Letters & Numbered Packs to be also New - viz -

- C - 2 Ornamental Lenses with Scrolled Surround
- " - 1 Brass plate
- G - 1 " " "
- I - 2 Ornamental Scrolled
- K - 2 Wreaths of Lenses
- ~~L~~
- ~~M~~
- U - 1 Brass Padlock

To be Cast, fitted up and finished in
 every respect same as ~~last~~ ^{last} mentioned in

New Cut Glass to match the old - the new
 packs required are - (as far as ~~the~~ can well be ascertained) the following
 viz -

- A - 1 Cut Glass Pine
- F - 1 " " Case
- * A - 20 " " Saucy & Drops same as ^{the} other 30.
- * M - 5 " " " " " "
- * O - 20 " " " " " "

The old Cut Glass to be cleaned -
 New Cut Glass. Clipped &c - in every respect same as - viz -
 the -

Council Chamber -

An old Brass Lustre - to be altered to design -
for 24 Candles - (Involved by adding parts from the 3rd ^{old} Lustre
mentioned in - Grand Reception Room) with new additions
as shown in Colours - suspended by ^{new} Six Chains - The 107 gals
to be ground to one socket

To be cast fitted and finished in every respect
same as Lustre in -

King's Iron Room -

July 8th to Chains right -

Queen's Drawing Room -

A large Brass Mounted Cut Glass Chandelier
for 50 Lights to be made to Design - (from various old Brass Mountings
in part from the 3rd old Lustres mentioned in Grand Reception Room)
and old rich Cut Glass ornaments such ^{new} additions - The parts
not better or number's - to be new - The parts Letter'd as under
also required W^{ts} - viz -

- C - 1 Brass Cap
- G - 2 " flanges for top of gallery
- W - 8 Cut glass pendant Stars -

The Cut Glass to be cleaned ~~with~~ new cut
whin. Chipped and entirely new wires with best silver
wire - arranged and hung to Design - The Emeralds to be
drilled and fitted to receive the same -

~~The Queen's Throne Room - 1 Large Brass Bust~~
~~for the Queen's Throne~~

The Queen's Audience Chamber - 1 Large Brass Bust in
~~part to be made from the 3rd Busts mentioned in Grand~~
 Reception Room - 1 for 16 lamps to ~~be made to~~
 design, with ^{new} additions - (New arms, chains &c)
 as shown in Colours -

To be cast fitted and finished in every
 respect same as Busts in "Grand Reception Room"

Queen's Throne Room -

A large Brass Bust (in part to be made from
 the 3rd ^{old} Busts mentioned in Grand Reception Room)
 for 16 lamps, to be made to "design" - with additional (new
 arms, chains &c) as shown in Colours - The base limited
 to have new burner brazed to back, and the reservoir
 enlarged as also shown in Colours -

To be cast fitted and finished in every respect
 same as Busts in Grand Reception Room -

Council Chamber

An old Fire Screen to be altered to Design F. 253. the Additions to be carved to the parts on Mounts to be detached, the Mounts to be reduced as they are not required to Slide, ~~to be~~ repaired ~~with~~ ~~with~~ ~~Dolphin~~ ~~Tails~~ and regilt in Oil Gold in the very best manner, except the fillets, insides of Shells, Snouts, and Fins of Dolphins: which are to be burnished and double gilt.

Dolphin Tails since found

The Mounts to be new papered and covered to match Silk of Room.

Kings Closet

A Fire Screen to be finished in every respect same as the above except being repaired ~~with~~ ~~with~~ ~~Dolphin~~ ~~Tails~~.

Dolphin Tails since found

Queen's Drawing Room

Queen's Drawing Room

An old ~~Fire Screen~~ Fire Screen to be completed to Working Drawing I. 255 with additions of Honduras Mahogany carved as shewn in color the Claws to be strengthened with Iron plates and fitted for new Stretcher rail by Iron screws and nuts sunk in

To be repaired, and Gilt in Oil Gold, except the fillets, hollows of reed, tongues of leaves and beads which are to be burnished and double gilt.

The Stretcher to be stuffed and covered with Plush the Mounts to be new papered and covered to match Room.

Queen's Ball Room

An old ~~Fire Screen~~ Fire Screen to be repaired and finished in every respect same as the above.

Queen's Throne Room

an old ~~fire screen~~ ~~fire screen~~ ~~fire screen~~ Fire Screen to be completed
 to Working Drawing P. 257. with Additions
 of Honduras Mahogany Carved as shewn in
 color the inner Moulding planted on the
 claws to be plated with Iron before the
 Centre Ornament is fixed the Foliage
 Paw to be cast and lacquered to match
 the gold.

To be repaired, and prepared in the
 very best manner and re-gilt in Oil Gold,
 except the fillets, hollows of Head, tongues of
 leaves and beads which are to be burnished
 and double gilt.

The Mounts to be fitted to the
 shape of Corners, prepared and covered
 with Silk to match Throne.

^{new} A Brass Tender and Stands to Drawings

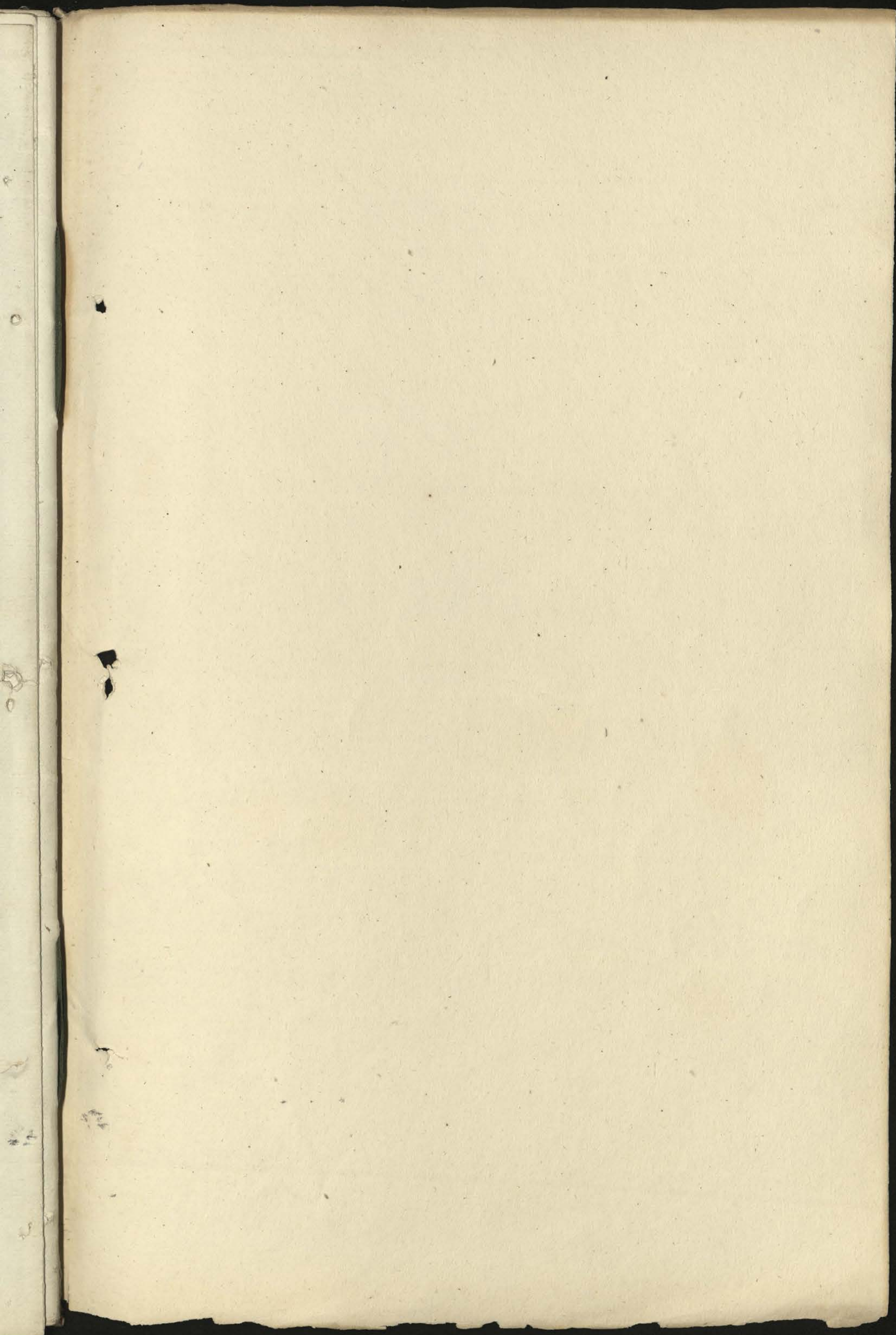
GA, with strong Steel ^{sloping as in drawing} bottoms, ^{filled with stop. Hour} screwed ^{as lead} ground, and glazed; and Stops for Five

Shons. The parts of Tender to be cast $\frac{1}{4}$ Inch thick, from approved patterns and lacquered ^{as finished} to match Stove ornaments.

^{as in sketch} The Brass to be Gun Guard ^{both parts} ~~with~~ ^{to} ~~bottom~~

The Steel to be drawn to be drawn ^{with} bright pans, and burnt with Brass ornaments ^{to} ~~to~~ match & equal to pattern

(the inside and the outside of the front to be plain -) this only applies to those brass pieces



11487. a