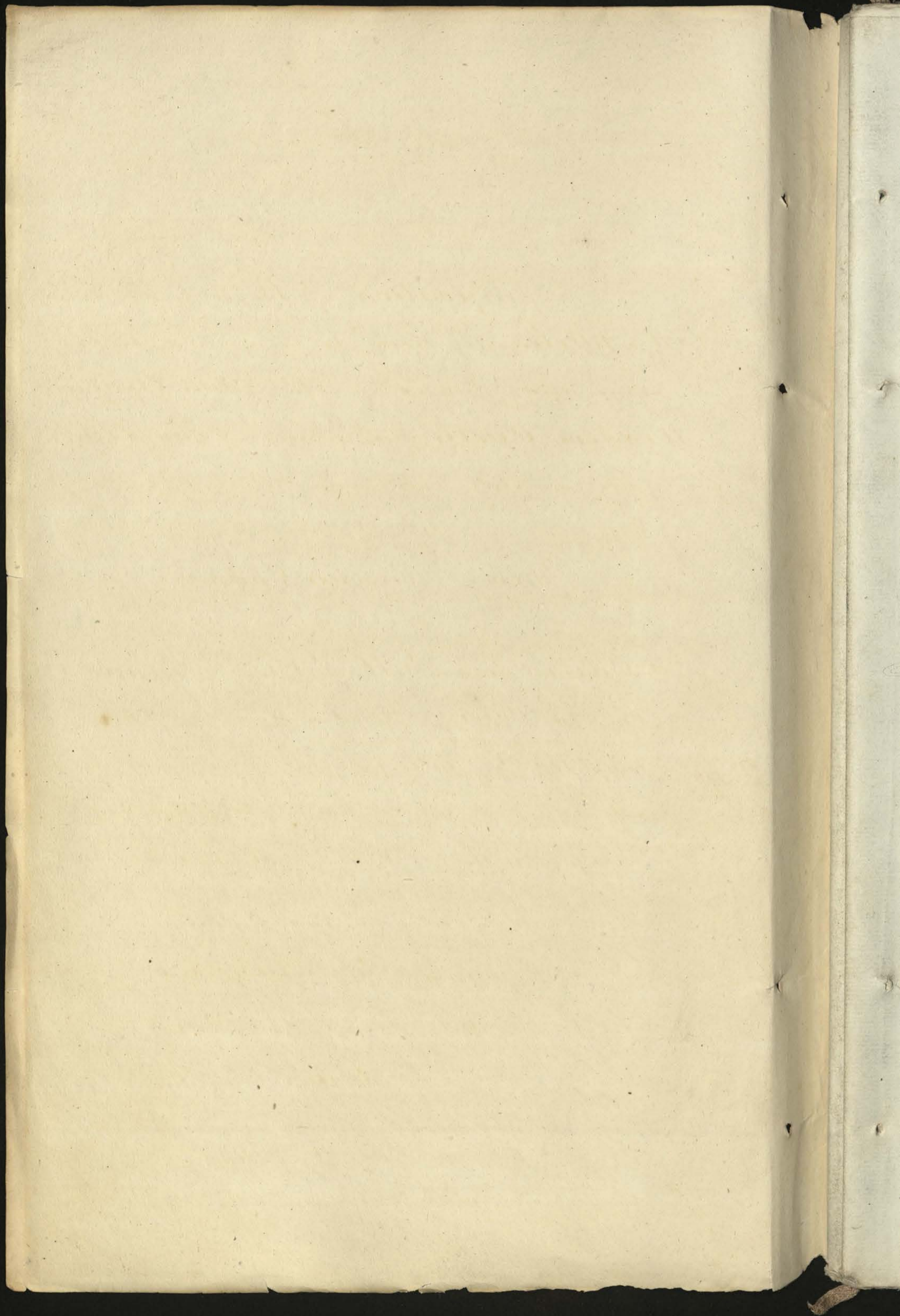


Windsor Castle
State Apartments }

General Specifications



1
Is the not the Original Copy -

Specification of Work to be done
to Old Articles in Store, to be applied to the
Furnishing and Fitting up the State Apartments
in Windsor Castle: and also of New Articles
required to complete the same.

Queen's Presence Chamber.

Two old Carved and Gilt Glass Frames with
One old Carved Head and Two Cornices, to be
2. 170 completed to Pattern with additional old
Moulding continued round ^{the} top, and sides of
Glasses to the Plynths; and joined to the Pilasters.

To be repaired and prepared in the
very best manner, and gilt in Oil Gold;
except the fillets, berries, and hollows of Bands,
which are to be gilt and burnished.

One new Carved Head to match.

N.B. The "Queen's Audience Chamber" is to be named the Queen's Presence,
Chamber & the "Queen's Throne Room" the Queen's Audience Chamber Two

Queen's Presence Chamber. continued.

Two old Carved and Gilt Pier Tables to be
 altered to Working Drawing ^{from old Tables,} the additions of
 Honduras Mahogany as shown in color; the
 pierze frame to have 3 Cross rails, the Plyths
 mitre dovetailed; with an Ebony fillet
 planted on.

2.171

To be repaired and prepared in the
 very best manner, and gilt in Oil gold;
 except the fillets, and straps of leaves: which
 are to be Gilt and burnished.

Two new Cummara Marble Slabs,
 1⁵/₈ Inch thickness.

The top of Plyths to be Scagliola
 to match Slabs.

The old Plates of Glass to be cut and
 fitted ^{to design and fixed on} paneled Blind frames, the joints ^{now} covered with
 gilt fillets.

Two old Ogee front Cabinets to be repaired, cleaned,
 and varnished, (The Mahogany
 one to be japanned to match).

2.172

The.

The Ornamental Ornaments to be taken off.
L. 172 ~~removed~~ regilt, and fixed on with gilt head Screws

Upholstry
done
The new Flyths to be made of Inch Honduras Mahogany, with a Cross rail of Deal, and their frames and tops veneered with Ebony, with rich Cast mouldings on the edge.

An old large Brass Lustre, (in part to be made from the 3. Lustres mentioned ~~in the list~~ ⁱⁿ the Grand Reception Room ^(Page 91) for 16 Lamps, to be made to design with Additions, (new Arms, Chains, &c) as shown in color.*
L. 173

The New parts to be Cast as light as possible from well finished patterns, the Additions to be connected by brazing with hard solder where practicable; the other parts to be fitted with strong Screws, to be Cast and chased equal to old parts.

The small fillets, Straps, Ends, and Eyes of leaves, the berries and other small parts only: to be burnished. All parts to be lacquered in the very best manner

Queen's ^{Presence} ~~Chamber~~ Chamber. continued

manner; in imitation of Ormoulu^{and} the
Old parts to be repaired.

* The Vase Lamps to have new burners brazed to each,
and the Reservoirs enlarged as also shewn.

Four old Tripod column Candelabra ^{prepare to receive} for 9 lights ^{elated branches}
each, to be altered to Working Drawing
with Additions in color of best seasoned
Mahogany ^{1 1/2 and a 1/2 in} with an Ebony moulding planted
on ^{an} Plymth: The Acanthus leaves over Female
heads to be carved, the Pateras and all other
Ornaments to be Papier Machie; and the ^{wh} ^{additions}
Additions to be secured with an Iron Cap and Nuts.
^{prepared set up to receive the branches}

2. 174
upholstery
done

To be repaired and prepared in the very
best manner, and gilt in Oil gold; ~~and~~ the
fillets, talons of Claws, berries, and other parts ^{small}
~~to be~~ ^{to be} Gilt
and burnished.

The new top branches from A to be Cast
metal chased equal to pattern, and lacquered to
match

match Gilding; the Nozels to be ground to one
Socket, and the whole fitted with strong Iron
rod, Screws, and Nuts.

Sixteen old Stools to be altered to Working Drawing
& pattern, with additions (in color) of Honduras
Mahogany; the Rose leaves, Nozet, and
pendant Ornaments to be Papier Machée;
the Foliage ^{socket} feet to be Cast from the model
furnished, ^{and} lacquered to match Gilding; ~~and~~
fixed as a Socket Castor.

2. 175
Mahogany
done

To be repaired, and prepared in the
very best manner, and gilt in Oil Gold; ~~the~~
the Nozet, hories, and hollow on legs; ~~which~~
to be ~~the~~ Gilt and burnished.

The new ^{band} loose seats to be of 1/4 Inch Oak
by 4 Inches wide, webbed 2 inches apart; to be
French pillow stuffed in fine Canvas with the
best curled hair; to contain Six lbs to the feet, and to be
covered with Gimson embossed Plush.

Two new Stools of Honduras Mahogany to match the above.

221 ft

Presence
Queen's Chamber continued.

19 1/2 ft
22 1/2 ft old Gold Moulding for ^{the} framing of Old Tapestry
to be completed to Working Drawing: # with
Additions in color of Papier Machie: which
are to be arranged to admit Laurel leaf
Ornaments, and 2 Half ditto with Rosets, on
each piece. between the corner Blocks.

2. 177

This item belongs to the
Queen's Audience base 17.

To be repaired and prepared in the very
best manner, and gilt in oil gold; ~~except~~ the
berries, stems of leaves, and Moulding ^{to pattern} ~~to be~~
to be ~~##~~ gilt and burnished.

(36 ft. in new Gold Moulding to match the above,)

12 old Corner Blocks: ^{to be lined up 1 1/2 in thickness} (the Rosets for which
will be furnished from Stores.)

Two old State Chairs to be altered to Working Drawing
~~as~~ as shown in color, the new Seat rails,
brackets on Knees; additions to back Legs, and other
Carving; to be executed in the same Style and
Materials as Pattern Chair: the Oak and

2. 304
done

laurel

MS

laurel branches on top, to be thickly carved;
and the Crown and Cushion to be made a flat
oval on the back.

To be repaired, and prepared in
carved in the white;
the very best manner, and gilt in Oil Gold, ~~and~~
the fillets, Stems of leaves, and Beads of Crown;
~~and~~ to be ~~carved~~ gilt and burnished.

L. 304

The ^{new} loose frames for Seat, and ^{Back},
to be made of 1/4 Inch Oak by 4 inches wide,
webbed 2 inches apart; and to be (with the Elbow)
pillow stuffed in fine Canvas with the best wiled
Hair; to contain Twelve lbs to the seat, and
covered with crimson embossed plush to design

A rich bullion fringe 6 inches deep
suspended from the bottom of Seat rail.

Two old Carved and Gilt Occasional Tables to be
completed by continuing the Moulding on Back
L. 297 tails, adding 2 new Cross Tails; and 2 new plain
Spanish

Queen's ~~Presence~~ Chamber continued.

Spanish Mahogany tops with null mouldings on the edges carved in the solid, the lipping on tops to be 1 1/2 Inch wide; and covered with Crimson embossed Leather.

L. 297
upholstery done

To be repaired and prepared in the very best manner, and gilt in Oil Gold ~~through~~ the hollows, bands around leaves, and nulling on edge of top: ~~which~~ ~~are~~ to be burnished and gilt.

Four Pieces of fine old Tapestry to be properly ^{packed} ~~strained~~ ^{and} ~~off~~ ⁱⁿ ~~new~~ 1/2 Inch deal paneled Blind frames, in two parts hinged, (for convenience of Straining) and to be fitted and fixed to Walls.

L. 176
upholstery done

A new Stove, Brass Fender, Fire Irons, and Guard.

L. 165-8

The detached Stove to be made to design, with Cast Mouldings and ornamented Back; with ^{black} ~~bright~~ shifting Fire and turned Centre bar and Ornaments, and also black fire.

The

The fire back to be Cast 1/2 Inch thickness,
the Ornamented back and Inside Cheeks 3/4 Inch
thick, and grating bottom 1 Inch, the back Hearth
Case and falling back ^{to be} 1/2 Inch thick.

The Cast Iron Case to be ground, glazed, fitted,
and hung with strong squares, screws &c.

The Brass Standards, ^{and to be} ~~the ornamental~~ ^{to be} ~~the~~
Moulding of Case to be Cast 1/4 Inch thick, to be fitted
with strong Nuts and Screws; and Pillars mounted on
Iron rods for the purpose of taking to pieces; the whole to
be Cast from ~~Carved~~ ^{Carved} patterns ~~to be approved~~ ^{to be approved} & lacquered

2 ^{new} Brass Fender and ~~Stands~~
with strong Steel sloping bottom, and
inside back, fitted with straps & screws, ^{ground}
and glazed, and ^{with burnish} Stops for Five Irons; ^{the ends to be cast}
^{with wire with falling} ~~the ends to be cast~~ ^{the ends to be cast}
to be cast 3/16 thick: lacquered
and finished to match the Stove Ornaments.

2 Sets The Steel Fire Irons to be Case
hardened, polished with bright pans, and
mounted with Brass Ornaments to match

2

and

Queen's Presence Chamber continued.

and equal to pattern Irons

A very strong new Brass wire Fire
Guard. Gothic pattern

Three Pair new fine White Holland Curtains
headed to shape of Windows, of 60 Inch Linen

2. 296
upholstery
done

fitted and fixed complete:

Height of Windows 16 ^{ft} 8 ⁱⁿ width 3 ^{ft} 7 ⁱⁿ 1/2

A new Hearth Rug made of the very best
thick worsted pile size 10 x 11 6.

298
upholstery
done

Three old Portraits

Three old Portraits to be repaired, restored, and varnished.

Three old Carved and Gilt ~~Limbo~~ Frames
for the above
to be repaired, additional Ornaments added,
prepared, and regilt in Oil and burnished Gold.

300

Queen's Audience Chamber

Queen's ~~Throneroom~~ ~~Throneroom~~
Audience Chamber

p. 149
An old Carved and Gilt Fire Screen ^{altered and} to be completed
to Working Drawings, ~~with~~ with Additions of
Ironwork & Mahogany ~~carved~~, as shown in
the ornaments to be carved ^{to be}
color; ~~the inner Mouldings~~ ^{to be} ~~planted on~~ the
Claws to be plated with Iron before the Centre
Ornament is fixed: the Foliate Paw to be
Cast, and lacquered to match the gold.

Wrought Iron
To be repaired, and prepared in the very
best manner, and to gilt in Oil gold; ~~and~~ the
fillets, hollows of Acids, tongues of leaves, and
beads: ~~and~~ ~~to be~~ ~~gilt~~ and burnished

^{new framed Panel}
The Mounts to be fitted to the shape
of Corners, ^{canvassed & copers} ~~prepared~~, and covered with
rich Crimson Silk in flutes.

p. 151
Two old Carved and Gilt Glass Frames with additional
Mouldings, Carved Scroll Frieze and Cornice; to
be completed to pattern; the additional ^{old} Moulding
to

to be continued to the Slabs of Tables, and joined to the present Frames.

151.

To be repaired and prepared, in the very best manner, and gilt in Oil gold; ~~except~~ the fillets, berries, and hollows of bands, ~~which~~ ~~are~~ to be ~~gilt~~ gilt and burnished.

(Since arranged) ~~the~~ ~~same~~ ~~to~~ ~~be~~ ~~re-~~

An old State Chair, to be finished in every respect the same as ~~the~~ ~~one~~ ~~in~~ the ~~Queen's~~ ~~Presence~~ Chamber.
 State Chair *1834* *Discontinued Oct 29* *for Olden*
 (see page 6.)

Sixteen old Stools to be finished in every respect the same, as in the Queen's ~~Presence~~ ~~Chamber~~ Chamber, but to different designs. (see page 5)

An old Footstool to have 4 new carved paw feet to design.

159

To be repaired and prepared in the very best manner, and gilt in Oil gold; ~~except~~ the fillets; ~~which~~ ~~are~~ to be ~~gilt~~ gilt and burnished.

A Loose frame Top - ~~to~~ stuffed and covered in

Queen's Throne Room continued

in every respect the same as the old State
Chair. (see page 11)

Two old Carved and Gilt Circular Pier Tables with
old Wood Antique Slabs, to be completed to
Working Drawing; with Additions (in color) of
Stondures Mahogany Carved: except the Paterns,
and Ornaments on Brackets under Frame; which
are to be Papier Machie as also moulding on Splay.

To be repaired and prepared in the very
best manner, and gilt in Oil gold, ~~and~~ the
fillets, beads, and hollows of Legs: ~~and~~ to be
~~gilt~~ gilt and burnished.

The old Slabs to be repaired and
repolished.

The tops of new Splay to be Scagliola
to match Slabs, with an Ebony fillet planted on.

The ~~two~~ ^{two} old ~~the~~ plates of Glass to be
fitted to design, and fixed
Cut and silvered, on paneled blind frames same as in
the Queen's ~~Chamber~~ Chamber (see page 2)
Presence.
An old

An old Ebony Japan Cabinet with old ^{Marble} Slab, to be repaired, cleaned, ^{varnished} and french polished in the very best manner.

155

The Ornament to be taken off, ~~and~~ to gilt, and fixed with gilt head Screws.

The new Ebony Plymth ^{same} ~~to~~ ^{as} shape of top, to have a rich chased Ornament moulding on its edges: the Frame and top to be of Honduras Mahogany (Inch thick), with 2. Cross rails ~~and~~ veneered with Ebony 10. Inches from the front edge, and 6 from the ends, and the centre part to be stained.

Handwritten note: Mahogany done

An old large Brass Lustre to be formed (in part from 3 old Lustres) to working Drawing with Additions ^{as} shown in color: for 16 Lamps with 8 Vase Reservoirs, 2 burners each, and 8 new Chains &c.

162

To be Cast, fitted, and finished, in every respect the same as the Lustre in the Queen's ^{presence} ~~presence~~ Chamber. (see page 3)

Four old

Queen's Throne Room. continued.

Four old Tripod stand Candelabra ^{prepared to receive metal} for G. Light ^{to be}
 to be altered to ~~Wrought~~ Drawing with additions
 (in color) of best seasoned Mahogany: to be secured
 with an Iron Rod, and Nuts; and a new Ebony
 Plynt^h added: the Mouldings, and banded
 leaves of Cap to be carved; the Pateras, and
 other Ornaments to be Papier mache.

164
 Ebony
 done
 same as last
 iron
 bar and nuts prepared
 to receive branch

To be gilt in Oil Gold in the very best
 manner, ~~and~~ the fillets and mouldings ~~where~~
 are to be ~~the~~ gilt and burnished.

The top branches from A to be Cast Metal,
 chased and finished, in every respect the same as
 those in the Queen's ^{Presence} Chamber. (see Page 14)

Three Pieces of fine old Tapestry to be properly
 strained on ³ new 1 1/2 Inch deal paneled
 Blind frames, in 2 parts hinged (for convenience
 of straining): to be fitted and fixed on the
 Walls.

160
 Ebony
 done

190 ft old

220

160 ft of Old Gold Moulding for framing
of Old Tapestry, to be altered similar

161

to pattern; & lined up

20 feet New to match

16 New Paper Machine corners to Design,
for the Mitres; to be repaired, &

gilt in oil and burnished gold to pattern

26^{ft} old Gold Moulding for additional Framing to Glasp
50^{ft} new P. to match

Three Pair new fine White Holland Curtains

to be fitted and fixed complete, in every respect same

150

as the Blinds in the Queen's ~~Chamber~~ Presence Chamber.

(Page 10.) Height & Width of Windows the same

A new Hearth Rug, made of the very best thick

16.3 Worsted pile. 8.6 x 4

Carpet

A new detached Stove, Brass Fender,
Guard, and Case hanging Fire Irons.

145 - 8

To be

Queen's Throne Room. continued

To be Cast, fitted, and completed to
designs, Moulds &c; in every respect the same
as the Queen's ~~Chamber~~^{Presence} Chamber (see Page 17)

294 Three old Portraits to be repaired, restored,
and varnished.

295 Three old Carved and Gilt ~~Frames~~^{for the above} Frames,
to be repaired, additional Ornaments added
prepared and regilt in Oil, and burnished Gold.

ame
ce
ea
ive
es
de
Gold.

Queen's Ball Room.

Queen's Ball Room.

Two old Carved and Gilt Glass Frames with Heads,
to be reduced and lined up $1\frac{1}{2}$ Inch. to receive
Glass and Blind frames.

O. 134

To be repaired and prepared in the
very best manner, and gilt in Oil Gold; ~~and~~
the hollows, heads of frames, turn over of leaves,
fillets, and berries of Head Ornaments: ~~which~~
~~are~~ to be ~~the~~ gilt and burnished.

Two new Glass Frames with ^{old} Heads to match the
above, but narrower.

The old Plates of Glass to be repolished
and new silvered. marked with *

1 only * 2 Glasses 65" x 62 Inches

* 2 D^o. for head, cut from a plate 68 x 61.

2 D^o. — 63 x 47 and

* 2 Heads for D^o. cut from a Plate 65 x 60

heights of 2 Glasses 97 x 60.
2 D^o 97 x 46

Four

Four new Carved and Gilt Pier Tables to be completed according to Working Drawing, of well seasoned Honduras Mahogany, with old Legs, ^{Tables} Tablets, and Festoons introduced: (which will be furnished from Stores) the new Plynths to be mitred & detailed, an Ebony fillet planted with a Papier Machee on the edge.

141

*Supplementary
done*

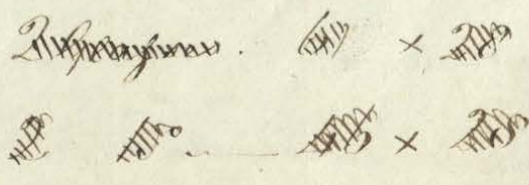
The old Legs, Tablets, and Festoons, to be repaired; and with the remainder of Tables prepared in the very best manner, and gilt in Oil Gold; ~~amongst~~ the filllets, small null moulding, and the mane of Lion's heads: ~~and the mane~~ to be gilt and burnished.

Four new Annemora Marble Slabs with square edges, 1 5/8 Inch thickness.

The tops of Plynths to be Scagliola to match Slabs.

Four ^{old} ~~new~~ Plates of Glass ~~with~~ ^{with} paneled Blind frames.

- 1 - 48 x 26 1/2 to be Cut
- 1 - 50 x 24 and proceed to
- 1 - 27 x 23
- 1 - 61 x 21, reg. size.



Two

Queen's Ball Room continued.

Two old Ebony Cabinets to be repaired, cleaned, and
 french polished; ^{with Japan} in the very best manner.

The Ormolu Ornaments to be taken off
 Regilt, and fixed with gilt head Screws.

New Plyths to be made of such

Honduras Mahogany, veneered with Ebony; the
 tops to have an Ormolu Moulding, and
 veneered 10 Inches from the front and ends:
 the Centre part stained.

New Slabs of Carrimara Marble to
 rest on an 1/2 Inch, Ebony fillet, fixed within
 the Ormolu moulding on top.

Two old State Chairs to be finished in every respect
 the same as those in the Queen's ^{Presence} Chamber.
 (see Page 6)

Three old Settees to be altered to Working Drawings,
 with additions of Honduras Mahogany as shown
 in color; the Nozel and pendant Ornaments to be
 Papier Machée: the Lion's paw feet to be Cast
 from

from Model furnished, lacquered to match gilding,
and fixed as a Socket Castor: the additions to
the Back of Legs to be carved equal to the
front.

Whitlock
done

To be repaired and prepared in the very
best manner, and gilt in Oil Gold; ~~except~~ the
fillets, hollows, bead on Rails, and berries: ~~which~~
~~are~~ to be ~~also~~ gilt and burnished.

The new loose Seats to be finished in
every respect the same as those of the State Chairs
in the Queen's ~~Chamber~~ Chamber. (see page 6)
Presence.

Five new Settees to match the above in every
respect, of Honduras Mahogany.

Whitlock
142
done

1 same Size as above, and
11 with 3 Legs in front 11 ft long only.

Twelve old Stools to be altered to Working
Drawing; in every respect the same as the ^{old ones} ~~above~~.

Whitlock
142
done

New loose Seats to be finished the same
as in the Old Settees above.

Am

Queen's Ball Room continued.

An old Fire Screen to be completed to ^{sketch and} Working Drawing with additions of Honduras Mahogany ^{as shown in color} carved ~~as shown in color~~: the Claws to be strengthened with Iron plates, and fitted ^{with} ~~for~~ new Stretcher tail by Iron screws, and nuts sunk in.

290
Mahogany
and

To be repaired and gilt in Oil gold; ^{including} the fillets, hollows of door, tongues of leaves, and heads ~~and~~ ^{to be} gilt and burnished.

The Stretcher to be stuffed and covered with Plush, the Mounts to be new papered, and covered to match Rooms.

308 ~~ft~~ Gold Moulding to be reduced in thickness to pattern.

144

Four old Angle Pieces ^{ft in} 8.10 each in Height

To be repaired and prepared in the very best manner, and gilt in Oil gold ^{including} the fillets
 carriage

ambrosia ~~was~~ to be ~~in~~ gilt and burnished.

152 ft new Gold Moulding to match, except the
Ornaments ^{to be} in Papier Machie.

20 ft new Angle Pieces to match the last
in every respect.

8 new Corner Blocks to pattern.

12 new Blocks to pattern.

Two old large brass mounted Ormoulu Cut Glass
Chandeliers for 30 Candles each, to be altered
to design with Additions as shown in color; the
parts ~~are~~ ^{and} lettered ^{as per} or numbered ^{with the} ~~the~~ ^{corresponding}
135 of ~~the~~ following ^{list} are also to be new viz^t

- C. 2. Ornamental leaves with Scroll Tendril
- C. 1. Brass Plate.
- G. 1. Ditto
- I. 2. Ornamental Scrolls
- K. 2. Wreaths of leaves
- S. 2. (Each)
- X. 10.
- U. 1. Brass Basin.

To be cast, fitted, repaired, and
finished

22 26
Queen's Ball Room continued.

As finished in every respect same as the Lustre
in the Queen's Audience Chamber. (Page 14)

New Cut Glass to match the Old
(as far as can be well ascertained.) the New
parts required are the following

- A. 1. Cut Glass Pine.
- f. 1. Cut Glass Vase.
- * A. 30. Cut Glass Saucers and Drops same as the
other 30.
- * W. 5. Cut Glass Bayonets.
- * O. 20. Cut Glass Saucers.

The old Cut Glass to be cleaned, new
cut where chipped, and entirely new wired, with
best silvered Wire: arranged and hung to
design, the tendrils to be drilled and fitted to
receive the same.

Four new Metal Columns, ^{Candelabra} designed to apply old
Ormolu and Cut Glass Branches and
other Ornaments in Store for 9 Candles each,
The Column and its Ornaments to be Cast as
light

136

37
rd,
cleaned, new Cut where chipped, new Wires
to same as the Cut Glass in the Chandeliers
last mentioned: all the Metal parts from
A upwards to be Silvered instead of lacquered

A new detached Stove, Brass Tender, Guard
and Case hardened Fire Irons. &c.

129-31 To be Cast, fitted, and completed in
every respect to Designs, Moulds &c &c
same as in the Queen's ~~Presence~~ Presence Chamber.
(see Page 8)

Queen's Ball room cont

The new parts to be cast as light as possible, from well finished patterns, the Additions to be connected by Brazing, with hard Solder where practicable; the other parts to be fitted with strong Screws and Nuts, to be cast and chased equal to old parts, and the Nozels to be ground for One Socket.

New Cut Glass to match the Old (as far as can be well ascertained.) the New parts required are the following:

- A. 1. Cut Glass Pine.
- f. 1. Cut Glass Vase.
- * A. 30. Cut Glass Saucers and drops same as the other 30.
- * W. 5. Cut Glass Bayonets.
- * O. 20. Cut Glass Saucers.

The old Cut Glass to be cleaned, new cut where chipped, and entirely new wired, with best silvered Wire: arranged and hung to design, the tendrils to be drilled and fitted to receive the same.

Candelabra

Four new Metal Columns, designed to apply old Ormolu and Cut Glass Branches and other Ornaments in Store for 9 Candles each, The Column and its Ornaments to be Cast as light

light as possible, chased equal to pattern; and all lacquered in imitation of Groul...

The Old Cut Glass Ornaments to be cleaned, new Cut where chipped, new Wires the same as the Cut Glass in the Chandeliers last mentioned: all the Metal parts from A upwards to be Silvered instead of lacquered

A new detached Stove, Brass Tender, Guard and Case hardened Fire Irons. &c.

129-37

To be Cast, fitted, and completed in every respect to Designs, Moulds the same as in the Queen's Presence Chamber. (See Page 8)

Queen's Ball Room cont

Queen's Ball Room. continued

Five Pair new best fine white Holland Curtains,
headed to Shape of Windows, and fitted in
every respect Same as in the Queen's ^{Presence} ~~Chamber~~
^(See page 10) Chamber. Height of Windows 15.6 ^{ft. in} Width 5.7 ^{ft. in} 1/8.

300 Yards new rich figured Crimson Silk to
pattern 21 Inches wide* for Walls of Room,
which are to be Canvased and lined
with Elephant Paper the Silk* to be fitted
and hung on Walls.

A new Hearth rug made of the very best
thick Worsted Fleece.
9.0 x 4.3

Twenty one Gallery Portraits by Vandyke so
be

140
upholstery
done

143
upholstery
done

291
done

292 repaired, restored, and varnished.

Twenty one old Picture Frames to be repaired,

293

additional Ornaments added, prepared, and
gilt in Oil and burnished gold.

Queen's Drawing Room.

Queen's Drawing Room.

An old Carved and Gilt Glass Frame with Carved Head, a new Block, and fillet; the Frame to be lined up to receive Glass and blind frame of 1 1/2 Inch.

J. 118

To be repaired and prepared in the very best manner, and gilt in Oil gold; ~~and~~ the fillets, and bushes of frame, fillets, overturn leaves, and berries on Head Ornament ~~to be~~ ~~to be~~ to be gilt and burnished.

The old Glass 12 3/4 x 5 1/2 to be repolished and new Silvered.

An old Carved and Gilt Elliptic front Pier Table, to be enlarged to ^{lengthen} Working ^{newly with} Drawing with Additions ^{consequent front} in color of Honduras Mahogany; by cutting the front and back tails across, and dowling a piece in between to lengthen the Tables: the Plymth mitre dovetailed, the Mouldings and
Ornaments.

124
is shown
Mahogany

Ornaments to be Carved with an Ebony fillet and planted on bottom of Plymth; and an inch paneled Blind frame.

To be repaired and prepared in the very best manner, and gilt in Oil Gold; ~~except~~ the fillets, null moulding, tiband, and SticB: ~~which~~ to be ~~in~~ gilt and burnished.

The new Slab to be Gibraltar tick.

The top of Plymth to be Seagliola to match Ditto.

^{old} ~~plate~~ plate of Silvered Glass, ^{56 x 31 to be reduced to} 29 ^{1/2} x 52 ^{3/4} ^{gilt} and fixed on paneled blind frame.

Two old Carved and Gilt Pier Tables to be completed to Working ^{Amphylth Plantat} Drawings, with additions as shown in color; the new Plymth to be of such Stowdur as Mahogany mitre dovetailed, in front, with Carved Moulding on top; and an Ebony fillet planted on bottom.

To be repaired and prepared in the very best manner, and gilt in Oil gold; ~~except~~

the

Queen's Drawing Room continued

the filllets, hollows, and ground of frieze:
~~which may~~ to be ~~in~~ gilt and burnished.

Done

The old Marble Slabs to be repaired
and polished, and the tops of Plynths to
be Scagliola to match Slabs.

Two old Zebra wood ^{and} Japan^{ed} Cabinets to be ~~new~~
~~Japaned~~ ~~burnt~~ ~~finish~~
repaired, and polished in the very best manner.

126

The Ornaments to be taken off ~~and~~ ~~gilt~~
in Ormoucu, and fixed on with gilt head Screws
in the very best manner.

Not done

The shaped front of Plynths to be cut
straight on the bottom edge, ~~and~~ a new Ebony
Moulding planted on to project $\frac{3}{8}$ Inch, and
 $2\frac{3}{4}$ Inches deep.

Two old State Chairs to be altered and finished
in every respect similar to Old State Chairs
in the Queen's ^{Presence} ~~Chamber~~ Chamber (see Page 6)

127
Not done

The

The new loose frames for Seat and Back
to match, in every respect, the old State Chairs before
referred to.

Twenty old Stools to be altered to Working
Drawing with Additions as shown in color.

123

To be repaired, and prepared in the
very best manner, and finished same as the old
Stools in the Queen's ~~Antichamber~~ Chamber (pages 5) ~~Presence~~

New loose Seats to match the above.

An old Fire Screen to be altered, repaired, and
finished in every respect similar to that in
the Queen's Ball Room. (See Page 24)

121

An old large brass mounted Cut Glass Chandelier
for 50 lights, to be made to Design from various old
Brass mountings; and ^{old} thick Cut Glass ornaments
with additions, the parts not lettered or numbered,
(with the exception of the ~~subsequent~~) are to be new.

119

viz

Queen's Drawing Room continued

the following; are also to be new, although lettered & numbered.

- C. 1. Brass Leaf
 C. 2. W^e Flowers for Top of Gallery
 W. 8. Pendant Cut Glass Stars.

To be cast, fitted, and finished in every respect; same as the Lustre in the Queen's Ball Room. (see Page 26)

The ^{old} Cut Glass to be cleaned, new Cut when chipped, new Wired &c. same as the Cut Glass in the Queen's Ball Room. (see page 26)

Four old Tripod stands for Candelabra to be altered and finished to Drawing, and Model ^{from Stand & old time} prepared

120

from B to C in Drawing; ^{with} the Additions are to ^{be carried out} which 2 to Carve 2 make 2 further of Flower which be carried out to Paper make an Ebony filled plant ^{in the middle}

The lower Stand from C downwards in drawing, ~~two only~~ to have Additions as shown in color, with an Ebony Plymth.

To be repaired and prepared in the very best manner, and gilt in Oil and burnished Gold.

Two

Two new Stands from C downwards, 180,
to match in every respect. + also 2 ornaments
B. in upper part

The top and bottom Stands to be
secured with Iron Rods. + prop^r 2 screws like

The old brass mounted Cut Glass
Lights for 11 Candles each, to be altered to Design
by adding new Cast metal leaf and other Ornaments
as shewn in color: the Additions to be connected
by Brazing where it is practicable, the other
parts fitted with strong Screws: to be Cast equal
to old parts, and all to be lacquered in the best
manner to match the Stands.

120

The Cut Glass to be cleaned, new Cut where
chipped, new wood to: same as the Cut Glass in
the Queen's Ball Room. (See Page 26)

222 ft. old Gold Moulding to be repaired and
prepared in the very best manner, and gilt in
oil and burnished Gold to pattern.

128.

86 ft

Queen's Drawing Room continued.

Eighty six ft new Gold Moulding and
 Four new Angle Pieces ^{ft in} 13. 11 1/2 each to match
 patterns.

128

8 new ^{Angle} Blocks to pattern.
 14 new Square Wino.

300 Yards new rich figured Drab Silk to
 pattern, 21 Inches wide; for Walls of Room
 which are to be Canvassed, and lined with
 Elephant Paper: the Silk to be fitted and
 hung on Walls.

127

Two Pair new best fine White Holland Curtains,
 headed to shape of Windows, and fitted in
 every respect the same as the preceding Rooms.
 Height of Windows ^{ft in} 15. 6. Width ^{ft in} 5. 7 1/8.

286

A new Hearth Rug made of the very best
 thick worsted pile, 10 ft x ^{ft in} 4. 6.

287

A new detached Stove, Brass Fender, Guard,
and Case hardened Steel Fire Irons.

To be Cast, fitted, and completed in
1114-7 every respect to designs, moulds &c &c
113-16. the same as in the Queen's ~~Antichamber~~ Chamber
Presence
(see Page 3)

Nine old large Gallery ^{Landscape} Paintings by
288 Juccarelli to be repaired, restored, and varnished

Nine old large Pictures Frames to be repaired
289 additional ornaments added, and prepared and gilt
in Oil and burnished Gold.

Queen's Closet

Queen's Closet

An old State Chair to be altered, repaired and
 finished with New loose Frames for Seat & Back,
 in every respect to match the preceding old
 State Chairs. except that it will be silvered with
 Platina in Oil, and the Seat covered same as the Stools below

Twelve old Stools to be altered to Working, Drawing
 with Additions as shewn in color

100

To be repaired and prepared in the very
 best manner, and silvered with Platina in Oil.

The new loose Seats to be made in every
 respect the same as the preceding Stools, with the
 exception that they are to be covered with Blue
 embossed Plush.

Two old Glass Frames with new Heads to design,
 and new Panel Blind frames; the Heads to be
 carved in the very best manner of well seasoned
 Lime

102

Lime & Tree.

To be repaired and prepared in the very best manner, and silvered with Platina in Oil.

Two old Plates of Glass ^{to be reduced to} 50 ¹/₄ x 33 ³/₄ to be reground and new Silvered.

103 Two old Pier Tables to be altered to Working Drawing by adding 4 molar 4 Pilasters on back legs new Plyths and other with Additions as shewn in color of Honduras Mahogany and to be round in width the ornament on back legs to be carved an Ebony Moulding planted on; and a new Inch paneled Blind frame to be fitted.

To be repaired and prepared in the very best manner, and silvered with Platina in Oil.

Two new Slabs of Cunnemara Marble 1/2 Inch thickness for top of Tables.

New Scagliola Plyths in imitation of Metal Cunnemara Marble with Cast Moulding.

Two old plates of Glass ^{to be reduced to} 26 x 35 ³/₄ to be reground and new Silvered.

done
nothing
done

An

Queen's Closet continued

An old Silver Toilet Glass to be completed to Working Drawing as shewn in color; the Additions to be Cast Metal chased and Silvered, in the best possible manner; the whole to be mounted with nuts, Screws, and an Inch flush panel Wainscot frame to stand on the Floor: the lower part prepared to receive the Glass

104

To be repaired, thoroughly, the Old Silver cleaned and burnished; soldered where necessary, and refixed on its frame with Silver headed Pins and Screws as requisite.

~~two~~ ² old Plates or Glasses to be ^{fitted} polished and new Silvered. ^{one} $26\frac{1}{2} \times 26$ ^{under Table} ^{one} $26\frac{1}{2} \times 36$ ^{over} the edges to be cut where necessary.

An old Silver Toilet Table to be mounted on an entire new Wainscot frame, the Silver to be cleaned, and thoroughly repaired &c as described for Glass above; and altered to design by an additional top piece of Cast Metal; silvered, and mounted with Iron rods on a Scagliola Plinth of Cunnemard
Marble

104

Marble, and an Ebony fillet planted on.

Two old Silver Toilet Glasses of different designs,
to be altered to Working Drawings with the
Additions ^{of Plymths &c} as shewn in color; to be completed in
every respect as described in the last Glass.

110-11

The ⁴ old Glasses to be ^{fitted,} repolished; new
Silvered, and edges cut where necessary.

Two old Silver Toilet Tables of different designs,
mounted on new Scagliola Plymths.

100-11

One only requires a new frame, ^{but} to be completed
in every ^{other} respect as described in the last Silver Table.

^{Can't get}
An old Gilt Occasional Table to have a new top
added of plain Spanish Mahogany, with a
^{lipped with Ebony 1/2 In.}
^{inlaid with Platina lines;}
Null Moulding on the edge ~~as in the last~~
to match one of the Silver Tables last specified.

282
Done
in 2-29
[Signature]

The Centre to be covered with Blue
embossed Leather

Ta

Queen's Closet continued.

To be repaired and prepared in the very best manner, and Silvered with Platina in Oil.

107 Two old Silver Figure Gueridons to be altered into Candelabra, by adding 6 Lights each to design; as shown in color; the branches and small leaves to be cast in metal, Chased and Silvered: the Noyels to be ground and fitted to one Socket, the old ^{top} Ornament in blue to be applied from Stores.

To be properly repaired, cleaned, soldered, and fitted with strong Screws and Nuts.

Two old Silver Figure Fire Dogs to be altered into Candelabra for 6 Candles each to Drawing, and backed out similar to model.

108

To be repaired, fitted, fixed &c and finished in every other respect same as the last Gueridons, except to be mounted on a Cannemara

Marble

Marble Plynth.

Two old Silver Fire Dogs to be altered into 6 light
Candelabra each, to design with the addition
of Metal Shells and Blocks: to be silvered
according to model, and finished in every other
respect the same as the "Two old Silver Figure
Guericons," with strong Iron Rods and Nuts.

112

Two old Tripod Pedestals with Rams' Heads & Corners,
to be repaired if necessary; and Silvered
with Platina in Oil.

*Wholesale
down*

Two new shaped Carrara Marble
Slabs 1 1/2 Inch thick.

112

Two new shaped ~~Imitation~~ Plynths ^{and}
~~imitation of Carrara Marble~~ ^{paper made} ~~Marble~~, with Carved
Moulding to match Tables and an Ebony
fillet planted on.

Two old Silver Foliage Guericons to be altered into
Candelabra for 6 Lights each to drawing, and
finished

109

Queen's Closet continued

finished in every respect the same as the ^{"old"} ~~best~~ Silver Figure "Guerigons" except to be mounted on an Iron Rod, and Blocks.

16 7/8 ft old Gold Moulding to be reduced in thickness to pattern and silvered with Platina in Oil

7 ft. new ^{Silvered} ~~Gold~~ Moulding to match

281.

4 New Angle Mouldings. ^{ft in} 11.9 each

8 New ^{Angle} Blocks for the above to pattern

8 new ^{Square} Blocks — ditto

A new Spring Blind of the best fine Holland, fitted and fixed complete with Brown Silk Cord and Tassels to pattern; ~~about~~ ~~finished~~

283
upholster done

~~the same as the above, to fit~~
~~apart from the~~ ~~dimensions.~~

Height of window ^{ft in} 12.6 Width ^{ft in} 5.7 1/2

A new detached Stove, Brass Fender, Case ⁹⁵ 8 hanged Fire Irons and Guard.

To

To be Cast, fitted, and completed in every respect to designs, Moulds the same as in the Queens Presence Chamber. (Page 3

200 Yards new rich figured Blue Silk to pattern, 21 Inches wide; to be fitted and hung to Walls which are to be canvassed, and lined with Elephant Paper.

A new Hearth Rug made of the very best thick worsted pile. 7.6 x 11 ft

83 Yards of new superfine Brussels Carpet, to be fitted and made up; the Carpet to be of the best quality, 27 Inches wide; and to weigh with all the cuttings 29⁰⁰ lbs per Yard.

Thirty five Cabinet Paintings by various Masters to be repaired, restored, and varnished.

Thirty

Queen's Closet, continued

Thirty-five ^{lb} Small Carved and Gilt Cabinet
Picture Frames ^{for the before mentioned Paintings} to be repaired, additional
285 Ornaments added, prepared, and regilt in oil
and burnished gold.

King's Closet.

An old State Chair to be altered, repaired,
 and finished in ^{every} other respect the same;
 (with new loose frames for Seat, and Back)
 &c: as ~~with~~ the ~~preceeding~~ old State Chairs.
 (page 6)

81
 will do

Eight Stools to be formed according to Working Drawing,
 from Old Chairs; the front Legs to make
 4 Stools by adding new Side rails: the back
 legs to make 4 to match by adding new front
 and back rails, 1/4 Inch Mahogany false rails.
 with Mouldings to be mitred and planted on
 all round: the Ornaments to be Papier Machée.

82
 will do

To be prepared in the very best manner,
 and gilt in Oil and burnished Gold: the
 fillets, beads, and Acorns; to be burnished.

The loose Seats to be bevelled into frame to
 save Height, and finished in every respect the same as the
 Queen's ^{Presence} Chamber Stools. (page 5) Two

King's Closet continued.

Two old Carved and Gilt Glass Frames, with Carved
and Gilt Frieze and Palm Head; to be
completed to pattern, the frame to be
labbetted to receive Glass and Blind frame of $1\frac{1}{2}$
Inch: the Pateras on blocks of Frames, and ends
of Scroll to be Carved.

814

To be repaired and prepared in the very
best manner, and gilt in Oil and burnished
Gold; the hollows, turn over of leaves, and fillets
to be burnished.

An
~~Two~~ old plates of burnt indurated Glass
 $86 \times 66\frac{1}{2}$ to be cut to 2 plates
1 ~~86~~ \times ~~66~~ ~~of~~ $113 \times 66\frac{1}{2}$ Sight $65\frac{1}{2} \times 40\frac{1}{2}$

An old Writing Table to be altered as shown by
Working Drawing, by adding new Carved
Oak and leaf Ornaments to the Legs, and corners of
Stretches.

816

To be repaired and prepared in the very

best

best manner, and gilt in Oil and burnished Gold; the talons, fillets, and stems of leaves: to be burnished.

The Ebony Buhl border to be repaired and polished, and Centre covered with Crimson Leather embossed border.

The Armouletim to be new Gilt.

The top of Stretches to have a loose frame; stuffed and covered with embossed Plush.

An old Fire Screen to be altered to ^{repairs and} ~~design~~ ^{being} ~~with~~ ^{the}

^{the} Additions to be carved ~~to~~; the parts on Mounts to be detached: ~~the Mounts to be reduced as they are not required to slide,~~ ~~to be repaired with~~

~~new~~ ~~Polychrome~~ ~~Finish~~ ~~and~~; and gilt in Oil and burnished Gold: the fillets, insides of Shells, Snouts, and Fins of Dolphins: to be burnished.

The Mounts to be new papered, and covered to match Silk of Room.

An old

Suppl. to
Done

89

Suppl. to
Done

King's Closet continued.

An old Tulip wood Marquetry Cylinder
front Escritoir, to be repaired, french polished,
and altered by adding two ^{new} legs mounted with
foliage feet and ornaments; which are also
to be added to the original Legs as shewn in
Drawing.

90

The French trophies in the Centre, to
be replaced by WWR encircled by Oak and
Palm wreaths of English Maple engraved; and
Purple Wood ground.

The Ormolu Mounting to be repaired
and regilt, and fixed by gilt head Screws.

An old shaped front rich Marquetry Cabinet, to
be repaired and ~~re-painted~~ polished; and the Drawers new
lined with Morocco Paper. and new Plyth and

91

The Mounting to be taken off, repaired,
regilt in Ormolu; and fixed with gilt head Screws.

The

The Verona Marble Slab to be repaired
and new polished.

A new Purple wood (shaped)

^{the 2}
Plyth to design of Honduras Mahogany ground,
^{and shape 2 mostly of that}
^{renew with such wood}
to be shaped same as the Slab, enriched with
a Metal chased Moulding on edge and gilt in Ormolu

Two Shaped (points) Marquetry Encoignures to match,
to be repaired and new gilt in Ormolu;
92 also new Plyths &c as described above.

Four old Bronze Boy Candelabra for Tier
Tables and old Encoignures to be altered to
Drawing #1. by adding 7 Light branches to
each; to be cast, Nozels fitted, lacquered
275
to be same as the Candelabra in the ^{branches} ~~presence~~ ^{Grand Reception Room} ~~Chamber~~ ^{in color} ~~(page 4)~~
^{presence} ~~Chamber~~; the Additions as shown to
be Cast and finished equal to old parts, and
fitted with Iron Rods, nuts, and screws, the
parts marked thus * to be lacquered to match branches

157 ft.

King's Closet continued

151 ft old Gold Moulding, and
45 ft 2 in. old Angle Moulding (11 ft 3 1/2 in ea)

To be repaired and prepared in
the very best ^{manner} and gilt in Oil and burnished
Gold: the hollows, and turn over leaf of
94 hushes: to be burnished.

8 new ^{angle} Blocks to pattern
8 new square Blocks.

150 Yards new rich figured Crimson Silk for
Walls of Room to pattern, 21 Inches wide;
which are to be Canvassed, and lined
93 with Elephant Paper: the Silk to be fitted
and hung on Walls.

Two new Console Tables to be executed to Working
Drawing of seasoned Honduras Mahogany:
85 (the ^{old} Dolphins &c which are not colored will be
furnished from Stores) the Ornaments to be carved,
those on the Fringe to be Papier Machie; the
Backs

Backs, Cross rails, and paneled Backs of
Glasses ~~to be~~ to be of Deal.

To be repaired and prepared in the very
best manner, and gilt in Oil and burnished
Gold; the fillets, acorns, and Straps of leaves
to be burnished and gilt

Slabs to be
The New Verona Marble ~~Slabs~~ and
1 1/8 Inch thickness.

4 old Glasses to be Cut and fitted; the Edges of Joint to be
ground.

A new Spring Blind of the best fine.

Holland, fitted and fixed complete; with
Brown Silk Cord and Tassels to pattern;

276

~~to fit~~ ~~to fit~~ ~~to fit~~ ~~to fit~~ ~~to fit~~ ~~to fit~~ ~~to fit~~ ~~to fit~~ ~~to fit~~ ~~to fit~~
to fit ~~to fit~~ ~~to fit~~ ~~to fit~~ ~~to fit~~ ~~to fit~~ ~~to fit~~ ~~to fit~~ ~~to fit~~ ~~to fit~~

It in It in
Height of Window 12. 6. Width 5. 7 1/2.

57 1/2

A new Hearth Rug, made of the very best

88

thick Worsted pile. Size. It in It in
7. 6. x 3. 6.

A

Kings Closet, continued.

87 A new Brussels Carpet, (superfine) containing
66 Yards; to be fitted and made up; the
Carpet to be of the best quality, 2 1/2 Inches
wide; and to weigh with all the Cuttings,
29 ¹³ for Yards.

A new detached Stove, Fender, Case
hardened Fire Irons and Guard.

80 47 To be Cast, fitted, and completed
in every respect same as in the Queen's Presence
Chamber; (see Page 8) excepting to different
Medians and Moulds &c.

277 Forty Cabinet Paintings by various Masters, to
be repaired, restored, and varnished.

Forty

Forty Cabinet Picture Frames, Carved and
 for the Paintings beforementioned.
 Gilt, to be repaired, additional ornaments
 added, prepared, and regilt in Oil
 and burnished gold.

2/8

Council Chamber

Council Chamber.

An old Carved and Gilt Glass Frame with Carved Head, to be altered to Working Drawing by adding a new fillet, block, and small Carved ornaments as shewn in color; the frame to be lined up to receive Glass and Blind frame of $1\frac{1}{2}$ Inch.

F. 66

To be repaired and prepared in the very best manner, and gilt in Oil and burnished Gold: the fillets, hollows, bands and stems of leaves to be burnished.

Old Plate of Glass 86×56 with head plate 56×18 edges of joint to be ground, fitted, and fixed: the small plate to have new blind frame. Light of Glass. $103 \times 52\frac{1}{4}$

An old Tier Table to be altered to Working Drawing, by adding new Pilasters, ^{and ornament and} frieze frame, ~~Carved ornaments as shewn in color~~ ^{of London} Plyths &c as shewn in color, ^{with paneled Blind} ~~ornament on top from the Paper~~ ^{the blind burnished} ~~frame.~~ ^{frame.}

F. 65

the Pilaster to be substituted ~~with~~ ^{the new} frame to receive Glass Plate: the Additions to be of Honduras Mahogany, the Frieze frame 3 inch stuff; the Plymth inch doublet: the Ornaments on Frieze frame to be Papier Machée, the Remainder with the Mouldings to be carved; and the panels of Leg to be sunk to receive the same.

Upholstery

To be prepared and gilt in Oil and burnished Gold, the fillets, Acorns, berries, and stems of leaves: to be burnished.

None

A new Slab Cunnemara Marble, 1 3/8 Inch thickness, with square edges

The top of Plymth to be Scagliola to match

also Glass Plate. height 52 1/2 x 31

An old Buhl Occasional Table to be repaired, ^{altered by adding new top} summiced, and french polished: adding a new 3 inch plain Spanish Mahogany top, with an Ebony 2 Inch band inlaid with 2 Platina lines:

Upholstery

the

Council Chamber continued.

the Centre covered with Crimson Leather
and Stamped border.

The mountings to be repaired, ^{with off axes} gilt
in Ormolu; and fixed with Brass Screws.

An old State Chair to be completed to ~~the same~~
~~Drawing~~ with an additional carved ornament
on top; and front Rail.

To be prepared in the very best
manner, and gilt in Oil and burnished Gold
the fillets, Needs, stems, and bands of leaves; to
be burnished.

The Seat, back, and Elbows to be
finished in every respect the same as all the
preceding State Chairs.

Eighteen stools to be formed according to Working
Drawing from Old Chairs, in every respect the

same

Council Chamber continued.

the Centre covered with Crimson Leather
and Stamped border.

The mountings to be ^{broken off and} repaired, regilt
in Ormolu; and fixed with Brass Screws.

An old State Chair to be completed to ~~the same~~
~~Drawing~~ with an additional carved
on top; and front nail.

To be prepared in the usual
manner, and gilt in Oil and burnish
the fillers, needs, stems, and bands
be burnished.

The Seat, back, and Elbows to be
finished in every respect the same as all the
preceding State Chairs.

Eighteen stools to be formed according to Working
Drawing from Old Chairs, in every respect the

same

Upholstery
in done

Upholstery
in done

X 2 -

same as the Stools in the King's Closet.
(See page 47.)

An old Ebony Buhl Escriptoir Cabinet to
be properly repaired, ^{+ new slab added} the Buhl work to be
pumiced and cleaned; and all french polished,
the Mountings to be taken off and repaired
where necessary, ~~and~~ to gilt in Ormolu: and
fixed with Gilt head Screws.

69
Wholesale
at 100

An 1/4 Inch new Carronata Marble
Slab, to project 3/8 Inch round front and
ends; and 1/8 Inch at the back.

An old Fire Screen to be repaired ~~with~~
~~new~~ ~~Carved~~ ~~Trunk~~ ~~Iron~~ And finished in every
other respect, the same as the old Screen in
the King's Closet. (see page 49)

271
Wholesale
at 100

2 1/4 ft. old Gold Mouldings, and 5/8 ft Angles
Pieces to be repaired; and finished in every respect
to match the Gold Mouldings in the King's
Closet.

8 new Angle Blocks. An old
8 new Square Blocks.

Council Chamber continued

An old large Brass Lustre to be altered to design
 by adding new double branches to old arms and
 for 24 Candles, (Enriched by adding parts from the 3 old
 Lustres ~~mentioned~~ in Grand Reception Room) with new additions
 as shewn in color; suspended by ~~the~~ new Chains:
 71 The Nozels to be ground to one Socket.

To be cast, fitted and finished in every respect
 the same as the Lustres in the ^{Grand Reception Room} Queen's Audience Chamber.
 (see Page 5)

Four old Circular Pedestals to be altered to Working
 drawing in column, by adding a new top of
 Honduras Mahogany; the Ornaments and leaves
 to be Papier Machée; the Plinth to be
 reduced. with the new Ivory Ornaments placed on four
 feet Plinth this

Four old Bronze Boy Candelabra for 9 Lights for
 the ~~above~~ Pedestals, to be altered and finished
 72 the same in every respect as those in the King's
 Closet. (see Page 57)

218 Yards new rich figured Crimson Silk to pattern,
 21

21 Inches wide; for Walls of room, which
are to be Canvassed, and lined with
Elephant Paper: the Silk to be fitted, and
hung to walls.

upholstery
60

A new Hearth Rug, made of the very best thick
worsted pile: Size ^{ft in} 7. 6. x ^{ft in} 14. 0.

Carpet
7/11

Two Pair new best fine Holland curtains headed
to shape of Windows, of 60 Inch linen fitted
and fixed complete.

upholstery
2/12

Height of Windows ^{ft in} 15. 6 Widths ^{ft in} 5. 1 3/4

11 1/2 Yards new superfine Brussels to be fitted and
made up the same as the Carpet in Kings Closet
(see page 45) in every respect

Carpet
3

A new detached Stove, Fender, Case hanging Fire
Irons and Guard. to be cast and finished in
every respect the same as the Stove &c in
the Kings Closet. (see page 45.)

61-64

Council Chamber continued.

Thirty-five Cabinet Paintings by various Masters
2/3 To be repaired, restored, and varnished.

Thirty-five old Carved and Gilt Cabinet Pictures
2/4 ^{for the above} Frames to be repaired, additional ornaments
added, prepared, and regilt in oil and burnished
gold.

King's Drawing Room

Kings Drawing Room continued

An entire new front Mouldings, Ornaments &c: And mitres dovetailed
 rail 2 to canvas to match
 old parts & old Plymth with Ebony fillet planted on as shown
 carved ornaments introduced
 under rail the in color. Two sides ^{of} Legs ~~to be~~ ^{to be} surate 1/2
 Plaster 2 to be retailed to green
 Glup and blind ~~from~~ ^{from} ~~inches~~ and round sanded, with panels deal

Blind frames to receive Glass Plates; the
 additions to be of Honduras Mahogany, and
 the Ornaments carved.

To be repaired and prepared in the
 very best manner, and gilt in Oil and burnished
 Gold: the fillets, bands and Acorns: are to
 be burnished.

100
 2 Scagliola

Black and Gold Marble Slab
 the cap filled & repolished
 in the front, ~~front~~, ~~external~~ ~~superficial~~

The tops of Plymths to be Scagliola
 to match Slabs. Heavy

the ~~best~~ ^{of an} ~~best~~ ^{also} ~~plates~~ ^{best} plates of Glass ~~panels~~

around ~~timber~~ ^{sight} ~~to be~~ ^{to be} reduced. ~~filling~~
 and pieces. 12 + 24.

a new glass Plate to match

Two old rich Carved Bronze open Pier Tables, to be
 altered

altered to design by an additional Frieze frame
 with two Cross rails of Inch Mahogany mitre
 dovetailed; doweled and screwed to frame: the
 ornaments on ditto, and backs of truss Legs to be
 Papier Machie; those under frame to be
 Honduras Mahogany carved equal to other parts
 of Table, and fixed with Iron plates and
 Screws: the back to be sabatted to receive
 glass, and an Inch paneled blind frame.

To be repaired and prepared in the very
 best manner, and gilt in Oil and burnished
 Gold; the berries, fillets, and stems to be
 burnished.

The old Black and Gold marble Slabs,
 to be repaired and repolished.

The tops of Plyths to be Scagliola to
 match the Marble Slabs, shewing a 2 Inch
 gold edge; with 1/2 Inch projection.

Two old Plates of Glass, one $58\frac{1}{2} \times 21$
 and the other 44×19 ; to be reduced to eight
 fitted and fixed.

Two

King's Drawing Room, continued

Two old State Chairs to be altered, repaired, and finished in every other respect the same, with new Loose frames for Seat and Back, &c as the State Chairs in the Queen's ^{presence} ~~Antichamber~~ Chamber. (see page 6.)

51
 [Faint handwritten notes]

Eighteen old Stools to be altered to Working Drawing with Additions in Color of Honduras Mahogany, the Oak leaf, to set, and pendant Ornaments to be Papier Machie. The Lions Paw feet to be Cast, lacquered, and fitted in every respect like the Letters in the Queen's Ball Room. (page 22.)

52
 Queen's Presence Chamber
 with apply except
 to be Dark Walnut
 [Faint handwritten notes]

To be repaired and prepared in the very best manner, and gilt in Oil and burnished gold; the Acorns, berries, and hollows of legs to be burnished.

New loose Seats stuffed and covered in every respect the same as the Stools in the Queen's ^{presence} ~~Antichamber~~ Chamber.

An old Ebony Cabinet to be repaired, and french polished

polished, the Japan panels to be repaired and varnished; the Centre to have a new Panel supplied.

To be altered ^{by adding} to ~~Drawing~~ with Chased Moulding Round top, and Centre panel to match following cabinet

58

A new Ebony Plymth, the front and ends of top veneered 8 Inches on, the Centre Stained and polished; the ground to be Inch Honduras Mahogany: and mounted with Chased Metal Moulding.

The Cornucle mountings to be gilt in the best possible manner, and fastened with gilt head Screws.

A new Scagliola Slab 1 1/2 Inch thickness in imitation of Black and gold Marble Slab to shape to be enriched (with the gold as much as the imitation will allow.

^{Wony} An old ^{to be repaired} Ebony Cabinet ~~to match the other~~ (but smaller to be repaired, ^{varnished} polished, and all the Ornaments to gilt with new Plymth and Scagliola Slab ^{to match the last} as described ^{above} cabinet in companion

58

King's Drawing Room continued

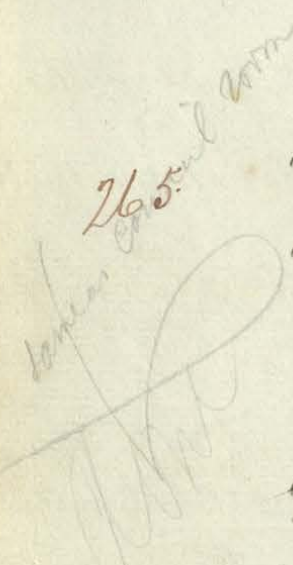
~~above~~ except the Additions as shewn in color
in Drawing with plain bead moulding on
top and an Ebony frame to form a sunk panel
mounted with Chases metal Ornaments and
Pateras cast from the larger Cabinet all to
be gilt to match in Ornament.



An old large Brass Chandelier, to be altered
by adding 30 new Branches for Candles
instead of Lamps. to Design to be Cast
and lacquered to match other parts.

Leaf-bowl arms
bricks on setting
514
Vase on Centre
ornament with festoons
supported by busts
Crestle shield with helmet
Pedestal of flowers

Two old Circular Pedestals for Candelabra to be
altered to Working Drawing by adding
Moulding Papier Mache ornaments, Pateras
and an Ebony fillet planted on base.



The groups of Pedestal to be gilt in oil
Gold in the very best manner.

Four old Bronze Boy Candelabra for 9 lights each,

to be finished in every respect the same as those
55 in the King's Closet. (~~see Page 51.~~)

~~2 for Bronze Fire Tables and 2 for Pedestals~~

This

Two old Bronze Chimney Candelabra
for 7 Lights, to be altered to Design; the
Additions to be Cast, Chased &c to match
266 as shown in color, the Stang and lights to be
laquered in imitation of Ormolu. The Lions
Heads, Festoons, and Mouldings to be Bronzed.

230 ft old Gold Moulding to be reduced in thickness
and altered to pattern by adding small bead.

To be repaired and prepared in the very
59 best manner, and gilt in Oil and burnished
Gold; the Straps and beads to be burnished.

30 ft new Gold Moulding to match the above.

4 new Angle Moulding ^{4 in} 13. 6 1/2 each

8 new ^{Angle} Blocks for ditto to pattern.

12 new Square ¹⁰

King's Drawing Room continued

An old Carved and Gilt Tripod Stand with
China Vase.

The gilding to be repaired in part
and mounted on a new Honduras Mahogany
shaped Plyth veneered with Ebony and
polished

The mounting of Vase to be taken
off, cleaned and refixed.

340 Yards new rich figured Crimson Silk to pattern
21 Inches wide to be fitted and hung to Walls
of Room which are also to be Canvassed and
lined with Elephant Paper.

5 new Spring Blinds of the best fine Holland finished
and fitted complete same as the King's Closets page 55

56.

	ft. in	ft. in	ft. in	
Widths 2 =	5 ¹ / ₂	2 = 2 - 10 ³ / ₈	11 = 3 - 7 ¹ / ₈	Height 15. 10 small
Window	12 - 8 ³ / ₄			

71
A new Hearth Rug made of the very
57 best thick worsted pile. ^{ft in} 10.6 x ^{ft in} 14.6

A new detached Stove, ^{P 261} Fender, Case
hardened ^{F 262} Fire Irons and ^{G 263} Grate.

48. To be cast, fitted, and completed
to same designs, Moulds to as the Kings
Closet. page 54

Eleven Gallery Paintings by Rubens
269 (Portraits, Landscapes, Historical Subject) to
be repaired, restored, and varnished.

Eleven old Picture Frames Carved & Gilt to
be repaired, additional Ornaments added,
270 prepared, and re-gilt in Oil and burnished
Gold.

An old Plate

An old Plate of Glass 39 x 99 to be fixed in the
 264 Shutter panel of the Great Window, and filled
 with Head Glass 59 Inches high. The edges
 of Joint to be ground.

A new Plate of best Silvered Glass with new Head Glass to
 match for opposite Panel Shutter.

Anti Kironc 100th

King's Anti Throne Room

Nine old Stools to be altered to Working Drawing
the Vails to be lined up and faced with
Honduras Mahogany; the fillets planted on:
the Oak Ornaments to be Papier attached.

do
D. 39
[scribbles]

To be repaired and prepared in the
very best ^{the whole to be} manner, and gilt in oil and burnished
~~gold~~
the Acorns, fillets, and talons of Paws to be
burnished and gilt.

New loose Seats to be made and finished
in every respect the same as the Stools in the
Queen's ^{presence} Chamber, (Page 5) except being
covered with Rich Garter Blue Velvet.

A new Pier Table to be made to Working Drawing
from old ^{carved} front Truss Legs, old front frieze Mouldings
oak ornament ^{in new Pilaster, Plymth as above}
and old metal leaves; the Additions in color
to be of the best seasoned Honduras Mahogany
back of plate to be substituted to new ^{the} Plymth
the Plymth to be of such stuff mitred & outtailed,
with

111
Antient Throne Room continued

with an Ebony fillet planted on the bottom

~~the wood work~~

To be prepared in the very best manner

and gilt in Oil and burnished Gold; the

fillets, and Screws to be burnished and gilt.

An old black and gold Marble Slab
to be Cut and polished.

An old Plate of Glass to be fitted
Sight 32 x 22 $\frac{3}{8}$.

Two old Ebony ^{and Bush} Cabinets to be properly

repaired, the door frames and panels to be

404 ~~Stummed and cleaned; and all the Ebony~~

parts ^{and} french polished; the inside to be lined

^{with} Paper; and new Shelves in each, having

their front edges veneered with Ebony.

The Carouls Ornaments to be taken off,

and Regilt; and fixed on with gilt head Screws

in the very best manner.

Four old Circular Pedestals for Candelabra to be altered to Working ^{Drawing} by adding mouldings, Papier Machée Ornaments, Paterns, and an Ebony fillet planted on base.

The ground of Pedestal to be japanned in imitation of Tortoiseshell, buhl gold and silver ornaments similar to column F; the parts to be japanned black, the others as shewn to be gilt in Oil Gold: ~~except~~ the Stem, and the ends of leaves ~~which are~~ to be burnished and gilt.

258

The tops of Pedestals to be sunk to receive the two Octagon, and 2 Angular dishes; with 3/4 Inch Screw plates:

A Pair of Old Buhl Gueridons to be altered into Candelabra to Working Drawing, by adding new Cast metal ornaments, and 11 branches for Candles; to be chased equal to other Ornaments, and lacquered to match the Ormoulu. The Nozels to be ground to one Socket

2
42

The whole of the Ormoulu Ornaments to be cleaned,

Anti Throne Room continued

cleaned, and restored, and all the Buhl work repaired, pumiced, and french polished: the top of Gueridon to be fitted with strong Screws to the Ornaments, at the bottom of tripod feet; to form a Dish.



A Pair of old Buhl Gueridons to be altered to Working Drawing into Canelabra as above, by adding 11 branches and all the Mouldings, Ornaments, Caps &c in Metal; and lacquered to match, with the addition of Buhl and Ebony as shewn black; the Old to be repaired, pumiced, and polished; and fitted with Octagon dish same as above.



Two Pair new Window Curtains made to Design of Rich ^{Primson} Velvet, containing 5 breadths each. 16. 8 in length; headed on tapes with large brass.

38

brass Rings, trimmed with 63 Yards of Oak
pattern Gold Lace 1 3/4 Inch wide; laid on
within the edge, lined with Tammy, and a half

breadth

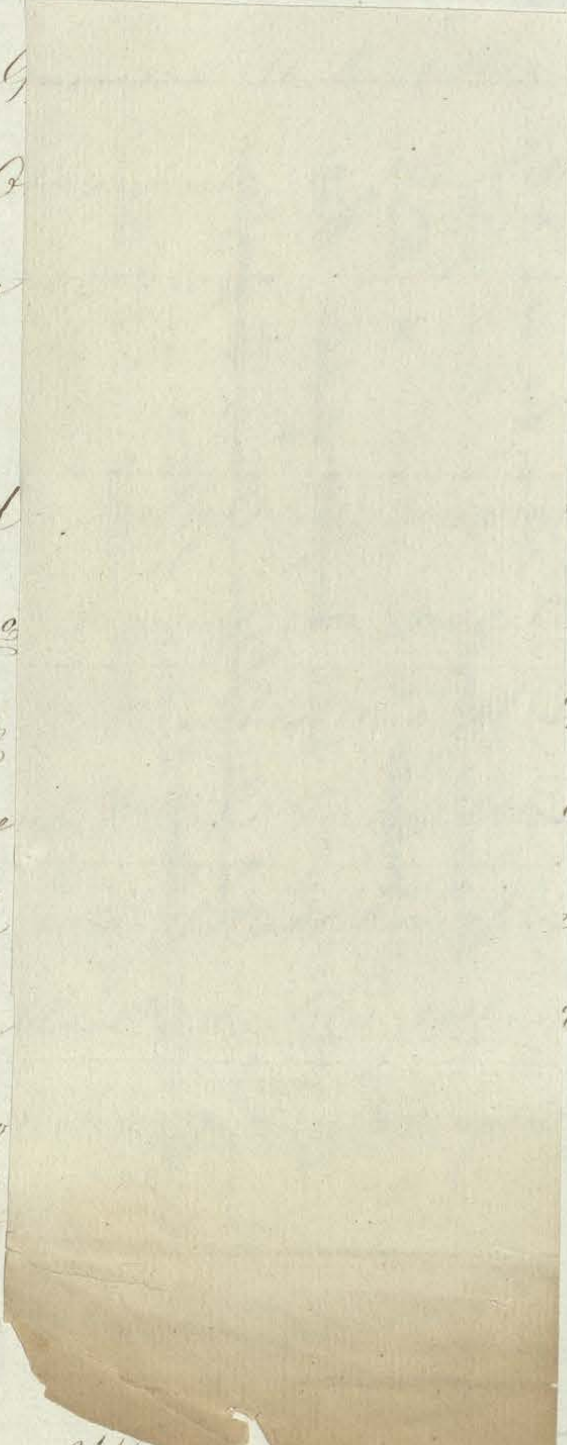
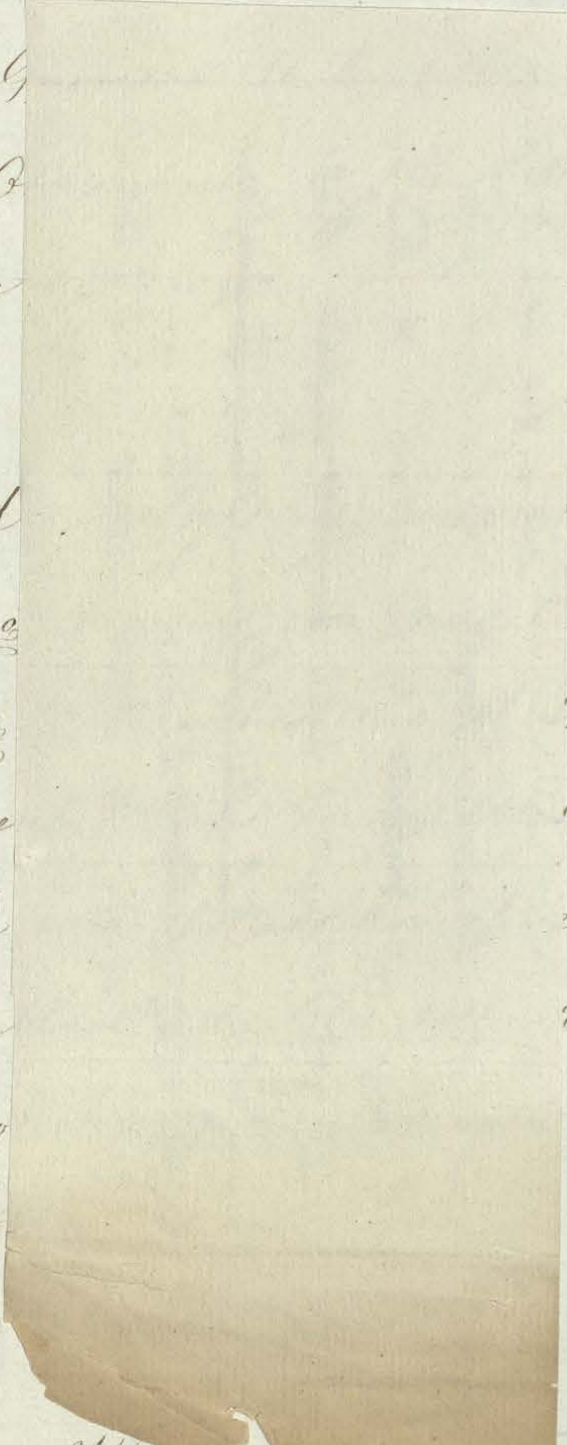
29 1/2 inch 9 1/2 cm
with
deep
Gold
each
N.B. The velvet
The Two
with
36
46
pa

Sum for 4-11 Light X
Cut Metal Beamblocks belonging to be cut for
with sample and prepared to be attached to the
Depth 1/2 inch 1/2 bay to hold the part of the
mounted - 1/2 lb. the upper part of the
to the fitting of the arms of the
N.B. The arms will be at the bottom
order

3 Yards of Gold
Lace
each
same material, trimmed
1/2 lb. Twine, 1/2 Inches
with 2 Yards of
suspended from
will be supplied
to be Canvased, lined
and lined with
Velvet to
ice.

Two new Spring Blinds of the best fine Holland,
45 to be fitted and finished complete same in every
Respect

Anti Throne Room continued

cleaned, and restored, and all the Buhl work repaired, pumiced, and french polished: the top of  with strong Screws to the  of tripod feet; to form

A Pair of old Working adding Ornament match shewn and no as above



to be altered to brass as above, by the Mouldings, and lacquered to Buhl and Ebony as repaired, pumiced, Octagon dish same

Two Pair new Window Curtains made to Design from the Majesty's velvet of ^{Prinsson's} ~~Rich~~ ~~Imitation~~ ~~Velvet~~ ^{Velvet}, containing 5 breadths each. 16. 8 in length; headed on tapes with large brass.

brass Rings, trimmed with 63 Yards of Oak
pattern Gold Lace 1 3/4 Inch wide; laid on
within the edge, lined with Tammy, and a half
breadth of Gros de Maples.

To be looped (with 3 Yards of Silk
Rope ^{each} ~~and~~ ^{rich gold color silk} ~~with~~ ^{2 tassels to each.})

29 yds 5-0 cm with tassels with 3 yds of silk and brass

Two Valances of same material, trimmed
with rich gold color Silk Twine ^{1/2} Inches
deep on top and bottom: with 2 Yards of
Gold Rope, and 2 Tassels suspended from
each Corner.

N.B. The velvet Gros de Maples ~~will be supplied~~
the ~~from the Office.~~

The Two Panels of Room to be Canvased, lined
with Elephant Paper, and hung with
46 ~~2~~ ³⁶ Yards rich ^{crimson} ~~blue~~ Velvet to
pattern: 21 Inches wide.

Two new Spring Blinds of the best fine Holland,
45 to be fitted and finished complete same in every
respect

Anti Throne Room. continued.

Respect as the Blind in the King's Closet
see page 53) with framed head covered with same material
to fit upper part of window - Height of window 13.5 x 14 1/4

A new Hearth Rug made of the very best
31 thick Worsted pile. 6ft x 3ft.

A new detached Stove, Brass Fender, Case
hangers, Fire Irons, and Guard.

To be Cast to design, fitted and
32-35 completed in other respects same as the
Stove in Queen's Presence Chamber (Page 8)

Five Gallery Historical Paintings by West
259 (large and small) to be repaired, restored
and varnished.

Five old carved and Gilt Picture Frames

be repaired, additional ornaments added, prepared
260 and gilt in Oil and burnished Gold.

^{we have carried out}
^{to London} Two new Window Cornices to be ^{made} executed to Working
Drawing of Honours Mahogany, (the
257 Ornaments to be carved;) with 1 1/2 Inch Deal
Lath, ^{with the} Brass Taps with Pulleys, ^{and} Brackets
and any fixing work

The Cornice to be prepared in the
very best manner, and gilt in Oil and
burnished gold.


An old Pier Glass 31 x 70. to be repaired fitted and
40 fixed

^{Square}
About 10 Yards new superfine Arminster Carpet made
and colored to design, in one piece to fit the recess:
The worsted to be of the best quality, and to be made
36 equal to pattern shown.

King's Throne Room.

~~Three~~ ^{Two} old Pier Tables to be altered and reduced to Working Drawing, with additions of Honduras Mahogany in color; the Plymth to be dovetailed, and the Ebony fillet to be planted on, the Mouldings and under Ornaments of Oak and Palm with Order of the Garter: to be carved in the best possible manner. The leaves in centre of frieze Mouldings to be Papier Maché

C. 21



To be prepared in the very best manner, and gilt in Oil and burnished Gold; the fillets, Gems of Oaks and Palm branches, Arms of Garter, Cross, and Berries: to be burnished

Two old Verd Antique Slabs to be fitted, repaired, and new polished.

A new Plate of ^{best silver} ~~what~~ Glass to be ~~fixed~~ ^{with} a new paneled blind frame.

~~one~~ ^{one} old ~~but~~ ^{new} Plate of Glass ~~to be~~

~~43 x 31 1/2~~ ^{43 x 31 1/2} ~~and a new paneled blind frame.~~
 An old Plate of Glass 29 1/2 x 42 - to be fitted and joined One

Copy of L.R. de Parnet — to match menu table

to be made up
A new Pier Table with new Verd. Antique
Marble Slab to be made to match,
from old Truss Legs, old Frieze frame
Moulding, and old metal leaves.

21

*a new antique table 2 + veneer to match
new old slabs*

Two old Ebony and Buhl Cabinets to be altered
to design, to be properly repaired; the Door
panels to be primmed and cleaned, and all
the Ebony parts french polished. The
Ornament ornaments to be taken off, and
regilt in the very best ^{in manner} and fixed on with gilt
head Screws.

29

to be made up like a - 7 1/2
Lute first

Two old Candelabra for Chimney Piece for
^{originally}
10 Lights each, to be altered from Old Piece
Dogs) to design; and Model; by adding new
^{metals}
branches &c; the ~~Targets~~ to be ground to
one Socket, the ~~positions and figures~~ properly
fitted, and fixed with strong nuts and screws.

No 2

254

~~chairs~~ ground fitted & executed in the best possible
manner. & gilt in ornate equal in every respect to
pattern the parts now Bronze also to be gilt
over

Chains are cast from well executed Models as light as possible; chased and lacquered in imitation of Camoulu: the Nozels to be ground to one Socket, and fitted with nuts and screws in the best possible manner.

X
Two new Pedestal Candelabra richly carved and gilt in Oil and burnished Gold for 10

No 4
10 light Candelabra Branches to be made to look
bearing Cast Chains, ground & fitted & executed and
gilt in the best possible manner ~~to be the same~~
in every respect the same as the Chinese Candelabra

83A
Drawing
Paris Mahog
manner:
and french

The Arms, berues, balls, fillets, talons of Claws, Arms of Garter, Cross and upper falling Row of Palm leaves: (marked A) to be burnished and gilt.

The Top branches from A to be Cast and finished in every respect the same as those of the Candelabra in the Queen's ~~presence~~ Chamber. (Page 4)

Kings Throne Room Continued

~~The parts now bronzed to be new
dipped~~

An Ebony Manne fitted to Ditto
lined with Baize.

Two old

No 3 to

of folomy Candelabra
chases fitted & finished
& gilt as also the
bronz 2 parts in
and an Ebony Plinth

~~Ebony Manne~~, to be finished in every respect the
same as the above Chimney Candelabra.

No 1

Four new large brass Dragon Lustres 24 lights

28 each, to be executed to design; suspended by 8
chains

Chains are cast from well executed models as light as possible; chased and lacquered in imitation of Camoulu: the Nozels to be ground to one Socket, and fitted with nuts and screws in the best possible manner.

X
Two new Pedestal Candelabra richly carved
No 4 and gilt in oil and burnished Gold for 10
Lights each, to be executed to Working Drawing
and made of the best seasoned Honduras Mahog
and carved in the best possible manner:

30 The Ebony Plynth to be planed on, and french
polished.

The Arms, beques, balls, fillets, talons
of Claws, Arms of Garter, Cross and upper
falling Row of Palm leaves: (marked A) to be
burnished and gilt.

The Top branches from A to be Cast and
finished in every respect the same as those of the
Candelabra in the Queen's ~~Antichamber~~ Chamber. (Page 4)
presence.

King's Throne Room continued

A new Throne to be executed to Working drawings,
and made of the best seasoned Mahogany;
and Ornaments carved in the best possible manner.

The Cornice to be glued up Inch
thicknesses, and the Joints (instead of butting)
to Splice.

18 The Top to be made in two parts, the
Lids and Mouldings to be glued up in thickness
to battens to receive panels: the inside Panels and
Ceiling fitted and screwed to receive Velvet: the
Centre to be flush paneled.

The Ornaments of Centre of Pilasters to
be separate, to allow the Velvet background.

The frame of Valance to be $\frac{3}{4}$ Inch when
finished.

A flush paneled frame for Back, of
1 Inch deal.

The whole of the Carved Ornaments,

Mouldings

Mouldings, Crown &c; to be gilt in Oil and
burnished gold: the Ermine, imitations of Gems
of the Crown, and outer panels of Dome, to be
Silvered and finished with their respective
Colors.

The Valance inside and outside, back
of Throne, and Ceiling panels; to be covered
with ~~55 yards of rich Garter Blue Velvet~~^{Purple}
~~equal to pattern.~~

The Arms, Corners and Crosses of
back, Stars, and Garters in Ceiling, the
Ornaments, Roses, Thistles, and Shamrock;
inside and out on Valance; to be richly embroidered
in Gold, Silver, and color to various designs, and
trimmed with 39 yards of Rich Gold Lace, 1 1/2 In
wide; and 8 yards of Gold Bullion fringe 4 in
deep.

n 13 the velvet ~~to be~~ supplied - same as G. H.

A new Carved and Gilt State Chair to be executed
to Working Drawings, and made of the best

22

seasoned

King's Throne Room continued.

seasoned Mahogany: the Cheeks forming the Arch under the Elbows to be $1\frac{1}{4}$ Inch thick including fillets; ^{with} Palm branches on each side planted on: the Nails ^{to be} 2 Inches thick

To be prepared in the very best manner, and gilt in Oil and burnished Gold; the fillets, stems of leaves, Globe, and Cross on top to be burnished and gilt

The loose Seat, Back, and Elbows, to be made of $1\frac{1}{2}$ Inch Oak by 4 Inches wide, webbed 2 Inches apart, to be square stuffed from under, and back, in fine Canvas with the best curled Hair.

The loose Seat, Back, and Elbows to be covered with rich Purple Velvet, and richly embroidered in Gold, Silver, and color: of Order of the Garter, Palm branches &c trimmed with gold lace, Cord, and gold fringe $3\frac{1}{2}$ Inches deep in front of Cushion.

WB The velvet only will be supplied from A
Globe

A new Footstool to be executed to Working Drawing
and made of the best seasoned Mahogany, the
Rails to be 1 1/2 Inch thick and carved in
the Solis.

229



~~Working Drawing~~
To be prepared and gilt in Oil and
burnished. Sold.

A loose frame Seat stuffed in every
respect same as Seat of the State Chair last
mentioned.

To be covered with Rich Purple Velvet and
trimmed with gold Lace, and rich bullion fringe
2 1/4 Inches in depth

RB - The velvet is

Six new Window Cornices to be executed to

253

Working Drawing of ^{Mahogany} Cornices and finished
in every respect same as the Anti Throne Room.
(see page 79.)

Six Pair new Window Curtains to be finished

17

in every respect the same as those in the Anti

Throne

Kings Throne Room continued,

Throne Room; ^(Page 76) with the exception of the
Fringe; which will be rich Gold Bullion
Fringe 1 Inches deep, instead of Gold color
Sill Twine.

Ninety Yards new rich Crimson Velvet so
pattern 21 Inches wide to be fitted and
19 hung to Panels of Room which are to be
canvassed, and lined with Elephant Paper

24 Thirty ~~four~~ new Stools to design, to be made of
Gonduras Mahogany in 2 parts; the rails
to be of 1 1/4 Inch stuff, the upper part to be
lap dovetailed, the fillets, to be planed on; the
rails of lower part to be framed into legs ^{and} which
are to be carved ^{from} out of the solid in the best possible
manner: The Ornaments on rail to be Papier
Machée.

To be finished and gilt in Oil Gold.
the

The Acorns, fillets, and talons of Taws,
to be burnished and gilt.

The loose Seats to be made of 1 1/4
Inch Oak, by 4 Inches wide; webbed 2 In.
apart; to be french pillow stuffed in fine
Canvass with the best Curled Hair; to
contain lbs to the foot and to be
Covered with rich ^{purple velvet} ~~Green~~ Blue Velvet.

Let the velvet be the same with

Six new Springing Blinds to be fitted and
fixed complete same in every respect as

31 the Blind in the King's Closet ^(Page 53) with
frames Head covered with same material to fit
upper part of windows. Height 13.5 Width 4-11.7 1/8.

1-4-8
1-4-7 3/4

A new Hearth Rug made of the very
26 best thick worsted pile. 11 x 4ft

A new Arminster Carpet (superfine) ^{Square} 22 1/2 Yards
25 to be fitted and made up in every respect same as
the Carpet in the King's Closet. (see Page 54)

A new

King's Throne Room Continued

A new detached Stove, Brass Fender, case hinges
Fire Irons, and Guard

To be Cast, and made complete to
same Designs, Moulds to as the whole of the
13-16 Stoves in the King's Apartments.

The inside ends of the Brass Fender to
be cast as outside, the front to be plain.

Four large Gallery Paintings by various Masters, viz

Portrait of Geo 3^d (Gainsboro) Geo 4th (Sir J. Lawrence)

255 William II^d (Sir M. A. Shee) and the Institution of
the Order of the Garter (West) to be repaired, restored,
and varnished.

Three Old Picture Frames to be repaired, additional

256 Ornaments added, prepared, and gilt in oil and
burnished G. C.

One new Picture Frame (for the Portrait of Geo 3^d) to
match the Old Portrait Frames.

Six new Plates of best silvered Glass to be fitted and fixed on
new panelled blind frames

20
3. 40 x 138
2. 60 $\frac{1}{2}$ x 138 for Ends of Room
1. 20 x 138

Grand Reception Room.

Grand Reception Room

for
 Four old Tripods Candelabra for 11 Lights each,
 to be altered to working Drawing with
 Additions in Color of Honduras Mahogany;
 with an Ebony moulding planted on Plynths.
 The Mouldings and ledges to be Carved, the
 Plates and Ornaments to be Papier Machée;
 and the Additions to be secured with an Iron
 Rod, and nuts.

Same style
 a square frame
 in the
 from
 for

To be gilt in Oil and burnished gold
 in the very best manner, the fillet, Mouldings,
 to be burnished and gilt.

The top branches from A to be Cast
 and finished same as those of Candelabra.

(Page 4)

Four old large Brass Lustres to be made from
 parts of 3 old Lustres originally carrying Lamps,

190

To

Grand Reception Room continued,

To be added to design with additions as shown in color, the parts wanting for which a pattern is not required for casting; (as far as can well be ascertained) are as ^{per} List un^{der} mentioned: to contain 60 Candles each, (10 Arms & Lights each) to be mounted on strong Iron Rod, masked by Palm and other leaves.

The new parts to be Cast as light as possible, and finished same in every respect as the old Lustre in the Queen's ^{Presence} ~~Chamber~~ Chamber (page 3) the Nozels to be ^{attached} to one Socket, and the holes not required in old parts to be screwed up.

The small fillets, straps, ends, and eyes of leaves, the berries, and other small parts only to be burnished. All parts to be lacquered in the very best manner, in imitation of Ormolu: the old parts to be repaired.

The

The List referred to.

- A. 2. Bottom Cup ornaments.
 B. 2. Ornaments with 10 Hollows.
 C. 2. Young Beads.
 D. 2. Small hollows with 2 square mouldings.
 2. E. 10. Leaf ornaments.
 F. 2. Scroll d.
 2. G. 5. leaf d.
 1. H. 1 Brass rim to carry Arms,
 1. I. 1 Cap.
 L. 1 Round fillet with leaf Ornament.
 M. 1. Jar (Ornamental Feathers).
 O. 1. Set Ornamental leaves.
 1. P. 10 Main Arms,
 6. Q. 144 ~~Summits~~ ~~Summits~~ Nozles, (144)
 7. R. 62 d.
 9. S. 26 Pateras, and 10 Brackets complete,
 3 Iron rods, with swivel eyes, Nuts &c

Waterloo Chamber.

Two new detached Stoves¹, Brass Fenders²,
Two Irons³ and Guards⁴

To be Cart and made complete to
Design, in every respect same as the
preceding Stoves in the King's Apartments.

Twenty new Oak Chomans to be made to Working
Drawings of ^{with seams} Riga Wainscot of the very best
quality; the Rails to be of 3 Inch Stuff, with
2 Cross rails in each: to be Carved in the best
possible manner, and twice varnished with
the best Copal Varnish.

The loose Seats to be made of 1¹/₂
Inch Oak, by 4 Inches wide; webbed 2 In.
apart

apart, to be french pillow stuffed in
fine Camvass with the best curled Hair: to
Contain . lbs to the foot.

Sixty Eight back Cushions filled with
lbs of the best curled Hair in fine Camvass.

The Seats and back Cushions to be
Covered with fine Crimason Plush imbosed
to design; and trimm'd with Cord, and 4
Crimason Silk Tassels to each.

5. 8 Ottomans. 7. 6 Long 4 Pillows each 32.
6. 12 Ottomans 5ft 6" 3 No. 36.

Four new Large Brass Lustres for 15 Lights
each, to be executed to Working Drawings
suspended by 6 Chains to hush ornaments
and continued with single Chain to the Ceiling.
The panels of Body to be enriched with the
Order of the Bath, (alternate Civil & Military)
To be Cast and finished in every respect same as
Lustre in ~~Queen's~~ ^{Presence} ~~Chamber~~ ^{Reception} Chamber. (Page 3)

Four

Waterloo Chamber continued

Four new Candelabra for 12 Lights each, to be
 executed to Drawing, of Military Trophies
 and Order of Bath: to be Cast in the best
 and lightest possible manner. (2 Military
 and 2 Civil Orders) the Models to be ground
 to one Socket, all the detached Ornaments to
 be fitted with Nuts and Screws; and mounted on
 a strong Iron Foot: Chased and lacquered
 in imitation of Ormolu.

Eight new large Brass Brackets for 15 Candles
 each, to be executed ^{To Draw &} in every respect same
 as the ^{previous} Lustres ~~overleaf~~ (Page 93) to Drawing
 prepared with Staple and Socket to fix
 in Walls.

Four ~~new~~ smaller Brass Brackets for 15 Candles each

Eight new ~~large~~ Brass Brackets for 7 Candles each.

2 new Hearth Rugs made of the very
 11 best thick worsted pile. 11 x 4 ft

649 Yards new superfine Brussels Carpet,
 12 to be fitted and made complete in every
 respect same as the King's Closet. Page 54

St George's Hall

W^o 1

Four new Brass Palm branch Brackets to Drawing, prepared with Socket to receive old Gothic Lamps, the Branches to be Cast and fitted to a Strong Iron Bracket which is to be fixed to the Wall and to project 6 Inches at the bottom and 15 at the top.

L 191

Eight old Gothic Lamps to be altered as shown in Drawing; adding new Burners and lengthening the Arms of present Burners 5 Inches.

W^o 2

Forty

Eight new Gothic Brass Brackets for 6 Candles each fitted to Sockets of Shields all mounted to their respective places.

192

To be cast in the best possible manner same as the Lustre in Waterloo Chamber. (Page -)

old Wainscot

Twenty five Banquettes to be enlarged from old Stools by substituting new Pipe tails and new Wainscot tops to be stuffed and finished in every respect as pattern. . . 5 ft. length.

193

ewing
Lamps
Iron
Project

as

no

up

gles

sted

same

Tools

scot

as

Guards Chamber

Guard Chamber.

^{no}
An old Brass Gothic Pastote to be taken down
and Bronzed, (instead of lacquered) as light
as possible and refixed.
£ 154 ^{color}

^{this}
Lobby leading from Guard Chamber to the
Vestibule.

^{no}
Two old Gothic Lamps to be altered same as those on
p. 249 Grand Stairs, with an additional base to stand on Brackets

Two old Carved Brackets for the above, to be repaired
and gilt. £ 250 ^{not used}

^{this}
Lobby from the State Anti Room leading to the
Queens Apartments.

^{no}
Two old Vase Lamps to be altered by adding new burners
same as those in State Anti Room. £ 251 ^{this}

Two old Carved Brackets to be finished as above. £ 250 ^{left off}

State

State Art Room.

Twenty four

~~Twenty four~~ old Stools to be altered to Work Rings

Drawing with Additions in Color to be finished
and gilt in every respect same as Stool in the King's

R 184

Drawing Room. (Page 16) and request to
receive ~~from~~ loose Seats ^{from Stores, which are already finished} Complete

~~Transport the same as the Chamber in~~
~~the same manner as the Chamber in~~

Four old Bronzed Carved Brackets, to be repaired

and gilt in Oil and burnished Gold; and fixed on

187

Pilasters to receive old Pedestal Vase Lamps:
with new brass turned Nozels and Sockets, the
Brass Lamps to be altered, by adding small leaf,
Pine Stands, and new Burners to drawing.

~~Four old Pedestal Candellabra Stands to be altered;~~

301

~~repaired, ~~and~~ gilt ^{in oil} and burnished Gold, and
mounted on Iron top and Brass turned Nozels:~~

and

State Anti Room, continued

W¹ ~~and Sockets: the Additions to be carried~~

Four old Brass Lamps to be altered by adding
185 new Burners to match ^{the} ~~above~~ ^{preceding}

W² Four old Brass Lamps for Chimney to be altered as
186 above, but on square brass Plynths

188 Six Pieces of fine Old Tapestry to be properly strained
on 4 new 1 1/2 Inch deal paneled Blind frames,
in two parts, hinged (for convenience of Straining)
to be fitted and fixed to Walls.

A new detached ¹⁷⁸Stove, ¹⁷⁹Fender, ^{Can hardened} ¹⁸⁰Fire Irons and ¹⁸¹Guard
to be cast to design, and made complete in
every respect the same as the preceding Stoves in
the King's Apartments.

~~Two new Pier Glasses 83 3/4 x 32. (Eight)~~
~~One old Chimney Glass 63 x 92 to be cut from~~
~~old plates of Glass. viz~~

183 Two new Pier Glasses 83 3/4 x 32. (Eight)

One old Chimney Glass 63 x 92 to be cut from

182 Old plates of Glass. viz

1 piece 69 x 64

1 do 67 x 23.

Vestibule

Vestibule

Thirteen new ^{Oak} Banquettes to be made to Working
 Drawing of ^{with flanne} Riga Wainscot of the best
 quality, the Rails $1\frac{1}{4}$ Inch with two
 247 Cross rails to each: (if jointed to be ploughed
 and tongued.)

The top $1\frac{1}{4}$ Inch stuff, lined with
 to Drawing; and all french polished.

Six old Terra Cotta Pedestal Candelabra, to be repaired and
 new painted; to be raised on Wainscot Plyth 10 in deep
 mitre dovetailed: and made of well seasoned Oak.

Six old Light Lamps to be made more massive by additions
 to design the Reservoirs to be enlarged to contain
 246 more Oil to be finished and lacquered same as
 Lamps on Grand Stairs. (See page 105)

A new detached Stove, Fender, ^{Case hardened} Fire Irons & Guard
 242 - 245 to ~~design~~ be Cast to design, and made complete
 like the preceding Stoves
^{in Brown Iron}

Grand Stairs.



2

Four new Spear Candelabra constructed to receive 4 of 2 light burners each, fitted to Pedestals of Grand Stairs to Design: to be Cast, and fitted with strong nuts and Screws, to Square Iron Column which is to be fitted to the Pedestal of Column: the Reservoirs of 16 Lamps, to be connected by new Gallery and top.

N. 241

The Spear &c to be Cast as light as possible, and finished in every respect the same as the Lustre in the Queens ^{Presence} Chamber. (see Page 3.)

Grand Entrance

Four old Oak Pedestals to be altered painted in imitation of U. 303 Iron fitted and fixed on Stair Case.

U. 303

Twelve new ~~Lamps~~ Lamps constructed to receive the Old Gothic 2 light Lamps to Design to be Cast and finished as light as possible. the Lamps to be altered enlarged with an additional burner to each, finished in other respects same as the Grand Staircase above.

238

The gallery and bottom parts of Grecian Lamps to be glazed, with the best plate glass bent to Shape.

4 new

Grand Entrance Continued

Four new Pedestal ~~Lamps~~ ~~Stands~~ Lamps constructed to
 receive old Gothic Lamps to Design to be finished in
 every respect to match the 12 ~~new~~ Lamps last
 237 specified. except that they will not be suspended but
 fixed on Cast Pedestal.

Library ("Nos 1. 2. 3 & 4" Room)

- 1. Paint Room
- 2. Library 7th Flr
- 3. Queen Anne's Chapel
- 4. Queen Elizabeth Gallery

Two old large Library Tables, to be repaired and
 cleaned or scraped as necessary to receive the
 black dye, in imitation of Ebony: the Pilasters
 to be inlaid with Ebony and Ivory, the Tops of
 Tables to be lipped with Ebony 1/2 inch wide
 and inlaid with Ivory: french polished in the best
 manner, and enriched with Ivory pateras. — The
 window panes, to be repaired, new lacquered and
 lined with fluted gros de nap. — In suite, with
 the four following Tables —

105.

The Tops to be covered with scarlet
 Morocco leather, embossed border —

Four old double pointed Ebony Library Tables, to be altered
 by adding flush paneled doors to front and ends of
 Pedestals, such Honduras Mahogany, to be flamed

106.

with

Library Nos. 1, 2, 3 & 11 Continued

With $\frac{1}{4}$ by $\frac{7}{8}$ Ebony fillets to receive books under
the doors at ends to be hung with Centre hinges
and mounted with tumbler locks

The bottom part of Centre to be taken away
and the Plymth continued across: two shaped Brackets
to be made to fit each side of Pedestals, to secure
it in the Centre to the Top of Table. in lieu of the part
removed

The front Pilasters to have new Ivory ornaments
to match those on the ends.

A 2. inch Ebony frieze ornamented with Ivory
chanelled on top, to stand flush with Pilasters -

The top and front Top of square moulding
under Frieze to be veneered with Ebony

A new mahogany Top. lapped with Ebony
2 inches wide inlaid with Ivory and covered with
scarlet morocco leather, embossed border -

An old large Ebony and Ivory, Octagon Library Table.
to be repaired new stained & french polished - the Top
to be covered with scarlet leather, embossed border.

107

An old Mahogany Octagon Library Table, to be repaired
to be in every respect same as the two first mentioned Tables.

107

An Ebony and Ivory Writing Table, to be constructed to Working
Drawings from Old ^{frame and Pillar} Standards of best seasoned Mahogany
with drawers, the Top lipper with Ebony, 1 1/2 inch
wide, inlaid with Ivory, french polished and lined
with scarlet leather, embossed border: the bottom
Block to be glued in 3 thicknesses or framed, and
mounted with Copps's best patent Castors; the frame
screwed to Block by 4 Iron rods and nuts

107

Four Old Ebony ^{Writing} Tables, to be altered to Working Drawing
Tables

108

from old Book Case desks, the addition of Standards,
Mahogany, veneered with Ebony, inlaid with Ivory,
and french polished -

108

The Stretcher, to be stuffed and covered with
scarlet cloth, the top to be lined with scarlet
Morocco leather, embossed border, the frame to be
secured to block, with iron rods and nuts

Two new Pillars,
108.

Two new Pillars, Ebony writing tables, to match in every respect
the 4 preceding ones - the Ebony & Ivory Standards to be
^{supplied by the same store -}
Eighteen old reading chairs, to be scraped, repaired & stained
in imitation of Ebony and inlaid with Ivory ornaments

108.

The seat and rest, to be covered, with
fine scarlet cloth

Two old Ebony and Ivory reading chairs, with rising
desks, to be repaired, new stained and french polished
and recovered in fine scarlet cloth, trimmed with
Gimp

109.

Two new, Ebony and Ivory reading chairs, to match the
preceding

109.

preceding two Chairs, in every respect

109. Six new large Bonquettes, to design, to be made of well seasoned Honduras Mahogany, to be stained and french polished, to imitate Ebony, and inlaid with Ivory ornaments

Loose frame seats to be stuffed & finished as preceding and covered with scarlet cloth.

110. Six new large Lounging Chairs, to design to be made of well seasoned Honduras Mahogany, to be stained and french polished, to imitate Ebony and inlaid with Ivory ornaments.

To be stuffed and finished in every respect same as the Bonquettes.

110. Thirty six New Fly Chairs, to design, to be made of well seasoned Honduras Mahogany, and finished in suite with the six preceding Chairs -

110. About 960 Yards, stamped scarlet cloth, 27 inches wide, for under sides of shelves, which are to be grooved and fixed

lined with Wainscot fillets

2881 Set (about) of Shelves, to be covered with Brazil Leather the front edge is to be rabbeted, the thickness of the skins, to avoid the projection of edges, — of the following

widths — viz	162	15 ⁱⁿ	—	2 ft wide
1852	6	—	11 in	—
176	11	—	1 ft	—
53			1.1 in	—
58	10		9 in	—
164	8		7 in	—
413	4		6 in	—

Five New Search Rugs. of the best Thick Flea Worsted — size to as follows — viz

Library, No 1	—	1 Search Rug	9 ⁱⁿ × 11 ⁱⁿ 3
"	2	—	1 do 7.6 × 11
"	3	—	1 do 5. × 3.
"	4	{	1 do 8.6 × 11
		1	do 6. × 3.3

Thirty six New Spring Blinds, (same as in Queen's Closet) without boxes. size as undermentioned &c. viz —

Library No 1	—	4 blinds	13 ^{ft} × 5.7
--------------	---	----------	------------------------

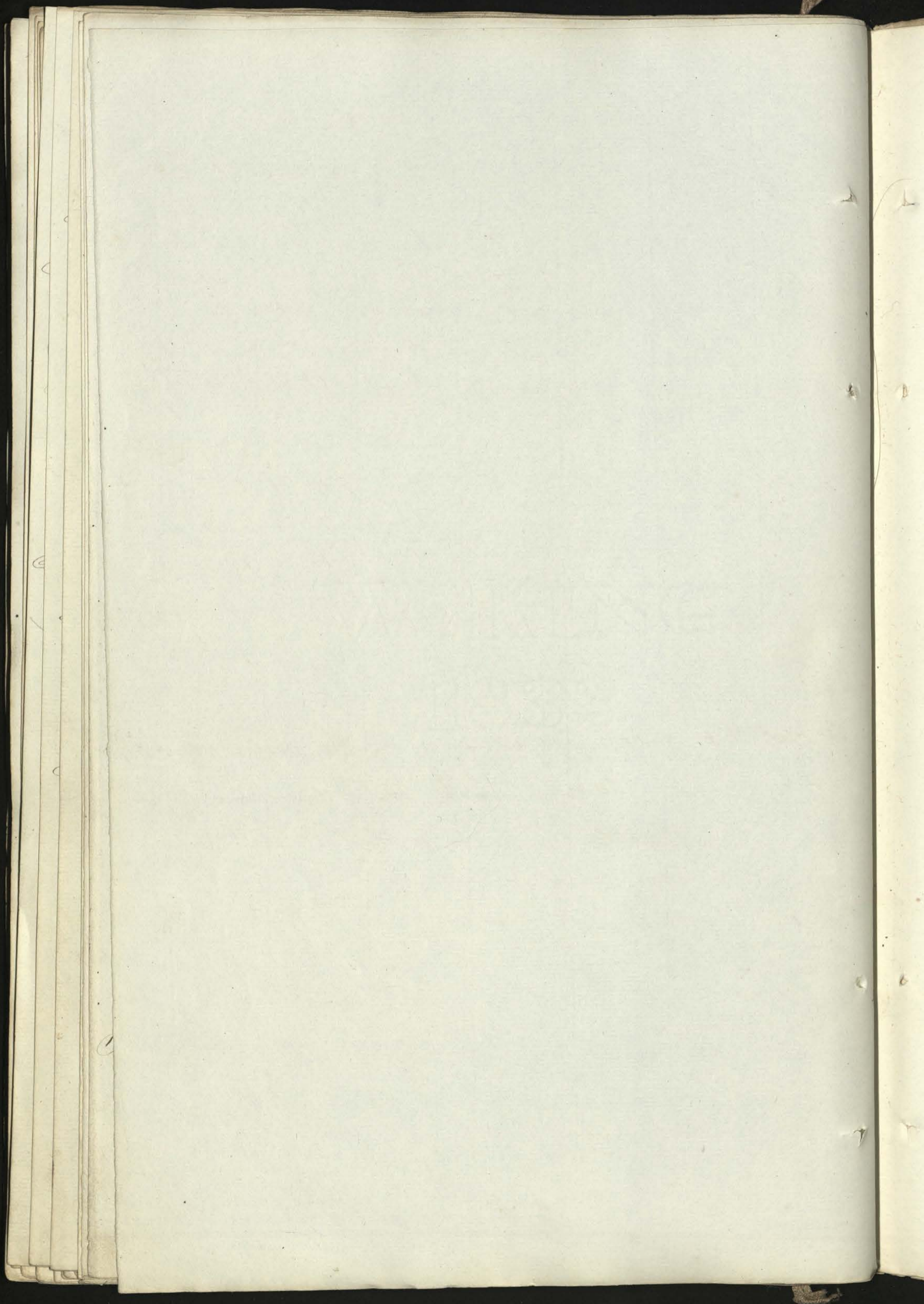
Library

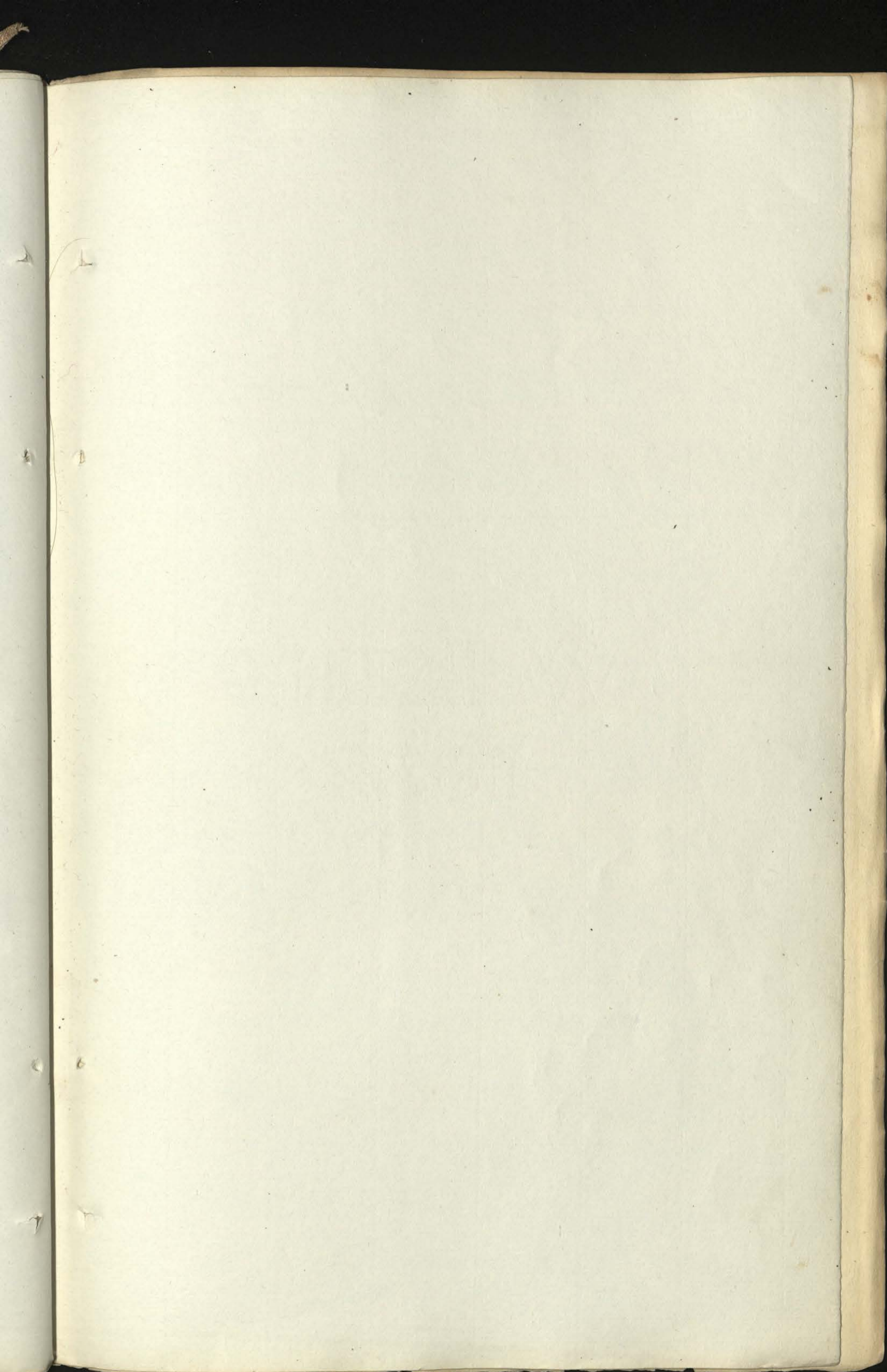
Library	No	Blind	ft	ft	in
	2	1	5	1.4	lines
"	"	5	10.6	1.8	
"	"	3	12.3	6.4	1/2
do	3	6	10.3	1.6	
do	4	1	9.6	5.11	
"	"	2	9.6	2	
"	"	4	9.9	4.4	
"	"	1	10.4	4.9	
"	"	4	10.4	2.1	
"	"	1	10.4	4.9	1/2
"	"	2	10.4	2	
"	"	1	10.4	5.3	1/2
"	"	2	10.4	4.4	

112

5 Fine New Stoves & Fenders, to be cast in the Cas. Larocno Au. Iron
 & Guards, to be cast, made complete to
 design. P.

11.3
 11
 3
 4
 3
 4
 5.7
 ary





21

114787

