

H. R. H. The Prince of Wales -

To Tatham and Parley

1809 Upholsterers &c Mount Street

September

To a very large elegant Commode made
to Design richly japanned to correspond
with H. R. H. two India Pannells
decorated with rich carved & gilt
ornaments and mounted on a plyth
complete - - - - - } 155" - -

To a rich black and gold marble Top - 26" 18" -

To a very large elegant commode made
to correspond with the above decorated
with H. R. H. small pannells and
brass mouldings and rich carved and
gilt ornaments to correspond with
the above - - - - - } 125" - -

To a rich black and gold marble Top - 30" - -

To two brown Holland Covers &c - 4" 12" -

To 60 yards of large platted Silk Linc
& 4 large Silk Tappels for Curtains
in lower Apartments - - - - - } 44" 8" -

To 4 very large Indulgent Chairs mould
& stained black decorated with brass
and stuff in Canvas with Cushions
and Pillow Complete - - - - - } 105" - -

Carr Gross - £ 490" 18

2

1809 Amt brought forward — — — — — £ 490.. 18..
 To covering them with W. R. Ws Cloth
 richly decorated with black velvet } 49.. 18..
 Gynp. Tappets &c — — — — — }
 To brown Holland Covers — — — — — 8.. 14..
 To 2 large grecian shaped Sofas to
 correspond — — — — — } 105.. —..
 To Covering do with Scarlet Cloth
 decorated with black velvet Gynp } 62.. 18..
 Tappets &c — — — — — }
 To brown Holland Covers. — — — — — 8.. 13..
 To 8 Small Chairs to correspond 134.. 8..
 To covering do — — — — — 48.. 18..
 To brown Holland Covers — — — — — 8.. 19..
 To 2 large Turkish Sofas on Paws
 with backs hair Squabs & feather } 45.. —..
 Pillows — — — — — }
 To covering do to correspond — — — 42.. 16..
 To brown Holland Covers — — — — — 7.. 19..
 To covering W. R. Ws 4 small
 Turkish Sofas to correspond with } 44.. 10..
 the above for Bow Room — — — — — }
 To a rich carved & gilt frame with
 ornaments for Glass in Room } 42.. —..
 Carr for do — — — — — }
 £ 1190.. 19..

1809. Amt brought forward — £1190.. 19..
 To covering a Turkish Seat in Pier
 in Roman Room decorated to correct ¹⁷ 19..
 To D^r a Woollack seat to match 9.. 19.. 0
 To 3 Hearth Rugs ————— 18.. 18..
 To 6 Rich Silk Bell Copes and
 Pappels for lower apartments — } 19.. 14..
 To making a Draery for window glass
 in Roman Room and a Calan
 for the inside of Curtain to Window
 of Conservatory in Scarlet Room
 decorated with Velvet. } 13.. 5..
 To 144 yards of large Scarlet Silk Lining } 28.. 16..
 to hang Pictures —————
 To 144 yards of smaller D^r ————— 14.. 8..
 To repairing the wine work of a Bookcase
 Door in Anti Room east } 0.. 0..
 To 17 yards of rich plain yellow Carpet
 as before ————— } 8.. 10..
 To 10 yards of rich red border ————— 4.. 19..
 To making Carpets to fit 3 Rooms
 in the lower apartments of the yellow
 Carpet & border changed last quarter wth } 22.. 10..
 the above addition Head Tape Tacks
 and laying down ————— }
 Carr. forw^d — £1340.. 4..

1809 Amt brought forward — £1340.. 4..

To 20 yards of 3/4 Brussells Stan Carpet
for back Stairs — — — — — } 9.. —

To 100 yards of narrow border — — — — — 15.. —

To 6 Carved Mahogany Pateras — — — — — 18.. —

To covering 2 Rooms on the 1st floor
with scarlet and brown Brussells
Carpet — — — — — } 20.. —

To a Hearth Rug for D^o — — — — — 3.. 3..

To covering 2 flights of Stairs and
Landings with Brussells Carpet
bound with black — — — — — } 32.. —

To Cutting the Turkey Carpet in
front Room to fit Round the
Bookcase, bound &c — — — — — } 18.. —

To altering the first floor Carpet to
fit back Parlor — — — — — } 7.. 6

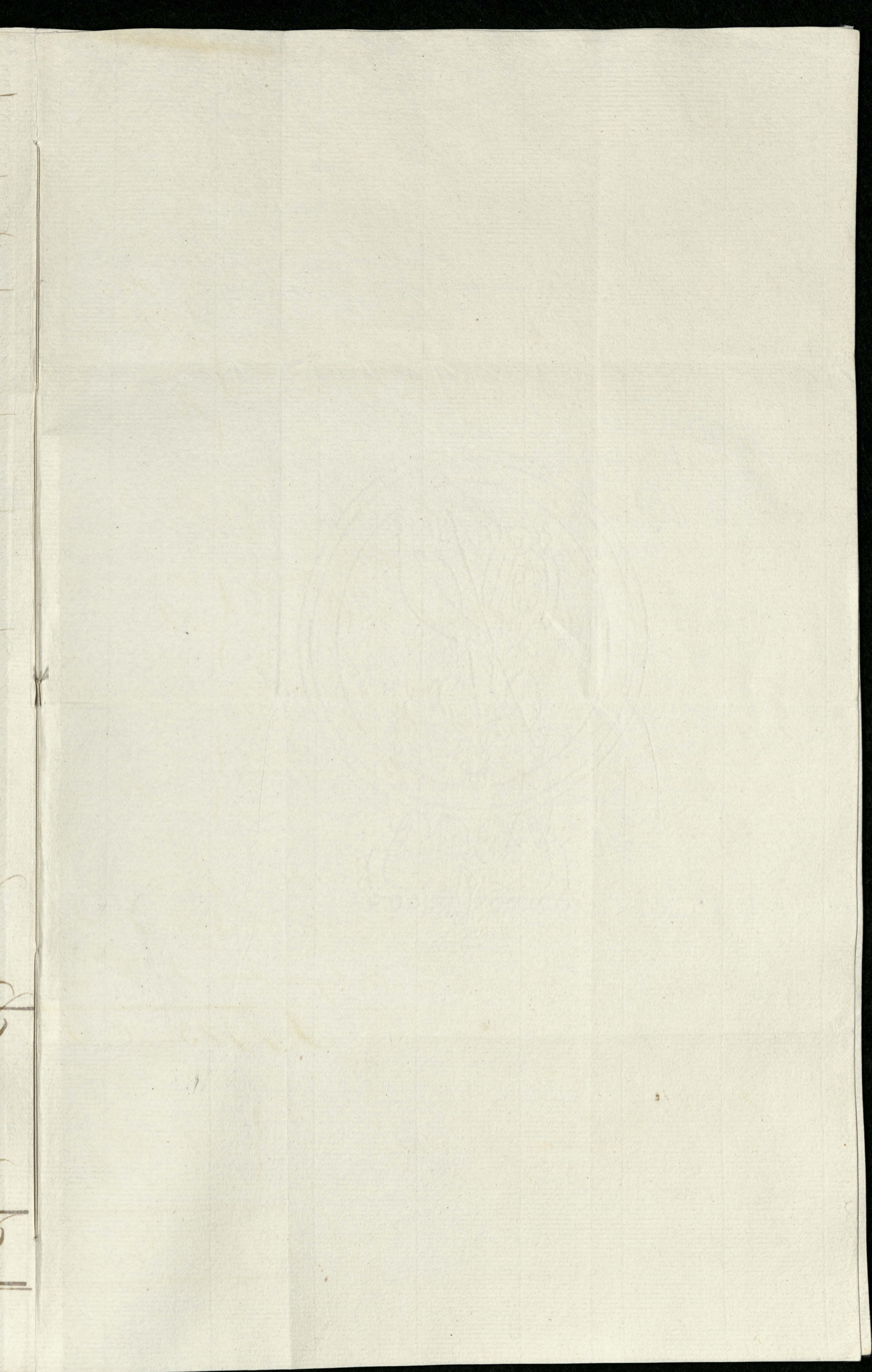
To 2 Canvas Blinds in Mahogany frames 2.. 6..

£1423.. 10.. 0

By 26 yards of Furgenda 3 quid
error in quantity changed in
Bill for last quarter — — — — — } 81.. 10..

£1341.. 18.. 0

Inspected
Benjamin Sutcliffe



4 0 0

WILLIAM IV
1830

Edmund Bayley

paid 1341. 10. 6.
1010. --

Blank 331. 10. 6.
3.

£ 331. 15. 6.

Money: 1010.

Wm. G. M. H. Esq.
Governor of Wales
Esq.
Latham and Bailey
£1341. 10. 6.

Turn: 1809