

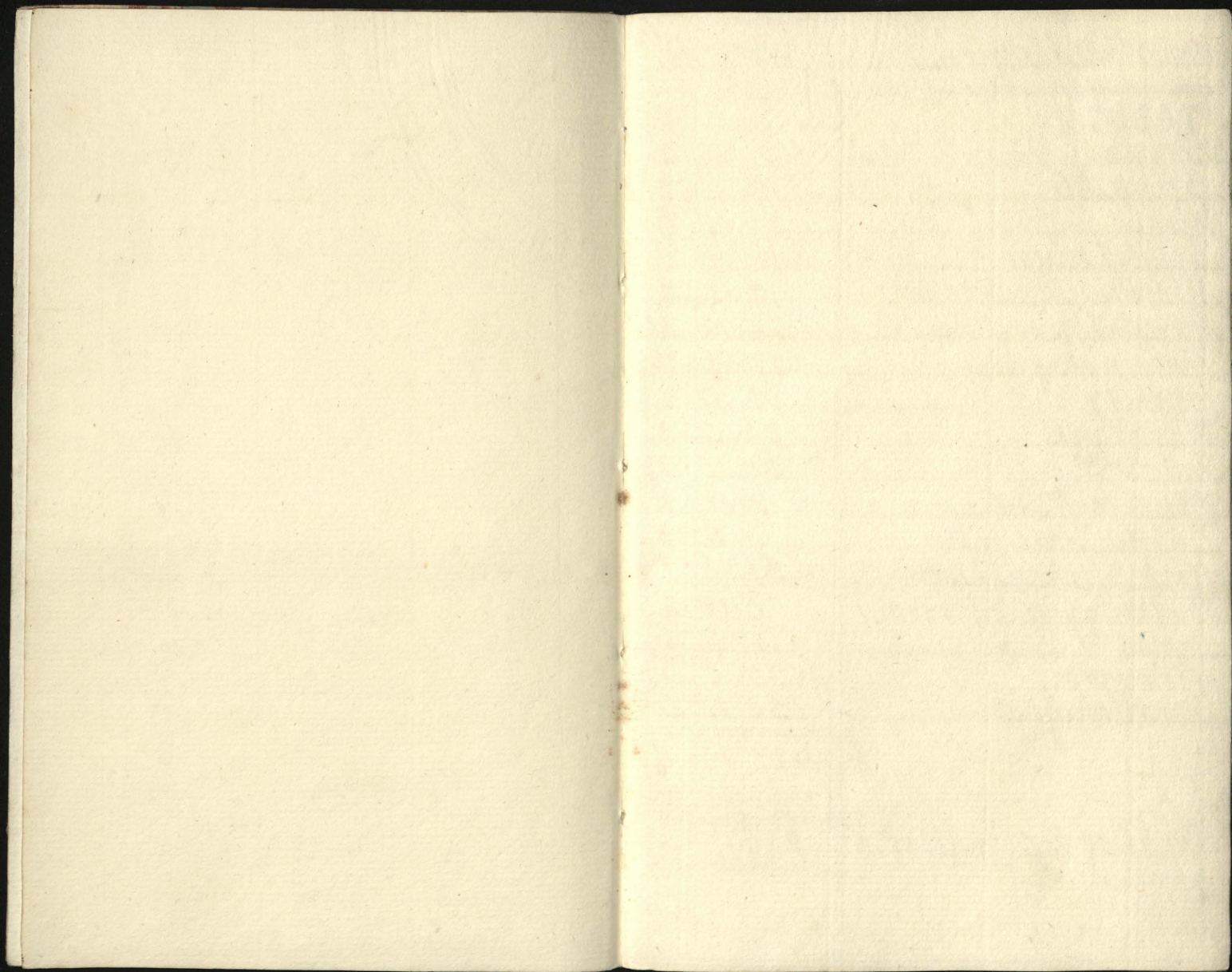
The image shows the front cover of an antique book. The cover is decorated with a traditional marbled paper pattern, featuring swirling, feather-like designs in shades of brown, tan, and grey. A central rectangular label with a double-line border contains the title and a handwritten number. The text on the label is written in a cursive hand.

Abstracts from y. Creditors of y. Household  
& Kitchen Expences for y. Year 1755. H. H.

74307-20

74307-20







Household Abst<sup>ts</sup> from January Cred<sup>r</sup> 1755.

Kitchen Abst<sup>ts</sup> from January Cred<sup>r</sup> 1755.

	£.	s.	d.
74307			
Bread	17	0	11
Beer & Ale	10	6	0
Wine	56	15	9
Bristol water	11	11	0
M <sup>r</sup> Stillingfleets Disb <sup>ts</sup>	2	5	0
Spice, Oil, &c to y <sup>e</sup> Tables	14	12	4 <sup>3</sup> / <sub>4</sub>
Linnen washing	17	16	0 <sup>4</sup> / <sub>4</sub>
Confecty	20	9	6
Wax lights	09	5	9
Tallow D <sup>o</sup>	31	15	0 <sup>2</sup> / <sub>4</sub>
Cheese to y <sup>e</sup> Tables	3	16	6 <sup>3</sup> / <sub>4</sub>
Basket Salt to D <sup>o</sup>	.	0	0
flerk Kitchens Disb <sup>ts</sup>	35	9	1
Butter & eggs &c. Coff: room	9	16	4 <sup>1</sup> / <sub>4</sub>
Lamps	11	5	1 <sup>1</sup> / <sub>2</sub>
Woodyard	130	6	0 <sup>1</sup> / <sub>2</sub>
Boardwages.	156	11	0
	£	627	10 1 <sup>1</sup> / <sub>2</sub>
		221	11 1 <sup>3</sup> / <sub>4</sub>
Total of the Creditor	£	849	1 3 <sup>1</sup> / <sub>4</sub>

	£.	s.	d.
Bread	2	17	5 <sup>1</sup> / <sub>2</sub>
Beer & Ale	.	12	0
Wine	1	2	9
Spice, Oil Pickles &c.	11	2	2
Confecty.	2	5	0
Butcher	49	3	4 <sup>1</sup> / <sub>2</sub>
Fishmonger	9	15	10 <sup>2</sup> / <sub>2</sub>
Bacon Lard &c.	8	19	10
Barrel Oysters	7	16	0
Quarts D <sup>o</sup> for Sauce &c.	3	16	9
Jellys	3	5	0
Tom <sup>r</sup> Salt.	.	15	0
flerk Kitchens Disb <sup>ts</sup>	9	17	4
Pastry	14	10	6
Poultry	65	10	7
Butter Eggs &c.	17	17	5
Herbs & Roots.	12	4	1 <sup>1</sup> / <sub>4</sub>
507 Dishes w <sup>th</sup> 5:11 <sup>1</sup> / <sub>4</sub> 174:17:6 <sup>1</sup> / <sub>2</sub>	£	221	11 1 <sup>3</sup> / <sub>4</sub>
Exceeds — 5:11 <sup>1</sup> / <sub>4</sub> — 1:0		174	19 2 <sup>1</sup> / <sub>4</sub>
The Princesses Extras —		29	8 10 <sup>1</sup> / <sub>4</sub>
The Childrens Diet. —		17	3 1
	£	221	11 1 <sup>3</sup> / <sub>4</sub>



Household Abst<sup>t</sup> from Feb. 4 Creditor 1755Kitchen Abst<sup>t</sup> from Feb. 4 Creditor 1755.

	£.	s.	d.
74308			
Bread	15	16	11 <sup>3</sup> / <sub>4</sub>
Beer & Ale	8	8	0
Wine	51	1	3
Bristol water.	10	10	0
M <sup>r</sup> Stillingfleets Dist <sup>t</sup>	1	5	6
Spice, Oil &c to y <sup>e</sup> Tables.	15	1	2
Linnen washing	17	14	0
Confecty	25	19	0
Waxlights	77	0	2
Tallow D <sup>o</sup> .	28	10	7 <sup>3</sup> / <sub>4</sub>
Cheese to y <sup>e</sup> Tables	4	0	7 <sup>1</sup> / <sub>2</sub>
Basket Salt to D <sup>o</sup> .		0	0
Herk Kitchen's Dist <sup>t</sup>	20	0	4
Butter Eggs &c. Coff: room	9	6	1
Lamps	9	12	6
Woodyard	115	10	1 <sup>1</sup> / <sub>4</sub>
Boardwages.	127	4	6
	£	545	16 10 <sup>1</sup> / <sub>4</sub>
		212	17 5 <sup>1</sup> / <sub>2</sub>
Total of the Creditor	£	758	14 3 <sup>3</sup> / <sub>4</sub>

	£.	s.	d.
Bread	2	13	4 <sup>1</sup> / <sub>4</sub>
Beer & Ale		13	0
Wine		16	3
Spice, Oil, Pickles &c.	12	8	6 <sup>1</sup> / <sub>2</sub>
Confecty	1	15	6 <sup>2</sup> / <sub>2</sub>
Butcher	44	7	2
Fishmonger	12	6	6
Bacon Lard &c.	3	19	8
Barrel Oysters	6	12	0
Quarts B <sup>o</sup> for Sauce &c.	3	1	0
Jellys	2	17	0
Com <sup>n</sup> Salt			
Herk Kitchen's Dist <sup>t</sup>	16	1	0
Pastry	14	0	6
Poultry	60	8	11
Butter Eggs &c.	16	5	1 <sup>1</sup> / <sub>2</sub>
Herbs & Roots.	14	11	11 <sup>1</sup> / <sub>4</sub>
532 Dishes at 6:5. 167:10:4	£	212	17 5 <sup>1</sup> / <sub>2</sub>
Under 6:5 5:3		167	5 1
The Princesses Exch <sup>r</sup> 's	20	9	8 <sup>1</sup> / <sub>2</sub>
The Childerens Diet	17	2	8
	£	212	17 5 <sup>1</sup> / <sub>2</sub>



Household Abst<sup>ts</sup> from March Creditor 1755

	£.	s.	d.
74309			
Bread	18	0	9 $\frac{1}{4}$
Beer & Ale	11	6	0
Wine	57	7	6
Bristol water	11	11	0
M <sup>r</sup> . Stillingfleets Dishts	16	4	0
Spice, Oil &c to y <sup>e</sup> . Tables.	14	7	10 $\frac{3}{4}$
Linnen washing	23	1	6 $\frac{1}{4}$
Confecty	31	3	0
Wax lights	03	2	0
Tallow D <sup>o</sup> .	31	11	6
Sheese to y <sup>e</sup> . Tables	4	0	7 $\frac{1}{2}$
Balskett Salt to D <sup>o</sup> .	.	0	0
Clerk Kitchens Dishts	40	3	1
Butter Eggs &c. Loff: room	10	5	0
Lamps	11	5	1 $\frac{1}{2}$
Woodyard	130	3	6
Board wages	156	0	6
	£	658	1 9 $\frac{1}{4}$
		245	7 7 $\frac{1}{2}$
Total of the Creditor. £	903	9	4 $\frac{3}{4}$

Kitchen Abst<sup>ts</sup> from March Creditor 1755

	£.	s.	d.
Bread	3	6	4 $\frac{1}{4}$
Beer & Ale	.	12	7
Wine	.	14	6
Spice, Oil, Pickles &c.	10	4	11 $\frac{1}{2}$
Confecty	2	2	6
Butcher	49	17	0 $\frac{1}{4}$
Fishmonger.	6	16	6 $\frac{1}{4}$
Bacon Lard &c.	7	7	2
Barrel Oysters	7	16	0
Quarts R. for Sauce &c.	4	3	0
Jellys	4	1	0
Com <sup>n</sup> . Salt.	.	3	0
Clerk Kitchen's Dishts	21	10	6
Pastry	17	10	0
Poultry	73	10	9 $\frac{1}{2}$
Butter Eggs &c.	10	11	0 $\frac{3}{4}$
Herbs & Roots.	15	16	0 $\frac{1}{4}$
509 Dishes a. 6:4. 100:10:4 $\frac{1}{2}$	245	7	7 $\frac{1}{2}$
Under 6:4. 7:4 $\frac{3}{4}$	106	2	11 $\frac{1}{4}$
The Princesses Coctras	35	14	4 $\frac{1}{4}$
The Childerens Diet.	23	10	4
	£	245	7 7 $\frac{1}{2}$



Household Abst<sup>ts</sup> from April Creditor 1755

74310

	£	s	d
Bread	17	2	11
Beer & Ale	11	3	4
Wine	53	11	9
Bristol water	10	10	0
M <sup>r</sup> . Stillin fleets Disbts	1	3	6
Spice, Oil, &c. to y <sup>e</sup> Tables	14	17	5 <sup>1</sup> / <sub>2</sub>
Linnen washing	19	7	6 <sup>2</sup> / <sub>3</sub>
Confecty	29	10	6
Waxlights	79	5	2
Tallow &c.	30	9	9 <sup>1</sup> / <sub>4</sub>
Cheese to y <sup>e</sup> Tables	3	15	4 <sup>1</sup> / <sub>2</sub>
Baskett Salt to D <sup>o</sup>		8	0 <sup>2</sup> / <sub>3</sub>
Clerk Kitchen's Disbts	22	14	9
Butter Eggs &c. Coff: room	9	19	1 <sup>1</sup> / <sub>2</sub>
Lamps	10	6	3 <sup>3</sup> / <sub>4</sub>
Woodyard	60	19	11 <sup>9</sup> / <sub>16</sub>
Boardwages.	151	10	0 <sup>1</sup> / <sub>4</sub>

£	534	15	4 <sup>1</sup> / <sub>2</sub>
	219	14	5 <sup>1</sup> / <sub>4</sub>

Total of the Creditor £

754	9	9 <sup>3</sup> / <sub>4</sub>
-----	---	-------------------------------

Kitchen Abst<sup>ts</sup> from April Creditor 1755

	£	s	d
Bread	3	0	0 <sup>1</sup> / <sub>4</sub>
Beer & Ale		13	7
Wine		19	0
Spice, Oil, Pickles &c	13	7	2
Confecty	2	4	9
Butcher	47	3	7 <sup>1</sup> / <sub>4</sub>
Fishmonger	13	7	3
Bacon Lard &c.	3	11	0
Barrel Oysters	4	12	0
Quarts D <sup>o</sup> for Sauce &c.	2	3	9
Jellys	2	0	6
Com <sup>n</sup> Salt		3	0
Clerk Kitchen's Disbts	20	15	7
Pastry	15	8	6
Poultry	61	5	6
Butter Eggs &c	17	17	2 <sup>3</sup> / <sub>4</sub>
Herbs, & Roots	11	2	0
570 Dishes at 6:2 <sup>1</sup> / <sub>4</sub> 176: 6:10 <sup>2</sup> / <sub>4</sub>	219	14	5 <sup>1</sup> / <sub>4</sub>
which is labor 6:2 <sup>1</sup> / <sub>4</sub> 2:10 <sup>2</sup> / <sub>4</sub>	176	4	0 <sup>1</sup> / <sub>4</sub>
The Princesses Extras	29	17	0
The Childrens Diet.	13	13	5
£	219	14	5 <sup>1</sup> / <sub>4</sub>



Household Abst<sup>s</sup> from May Cred<sup>r</sup> 1755

	£	s.	d.
74311			
Bread	23	16	6
Beer & Ale	17	9	6
Wine	75	5	9
Bristol water	12	12	0
M <sup>r</sup> Stillingfleets Disb <sup>t</sup> s	4	0	0
Spice, Oil, &c to y <sup>e</sup> Tables	20	9	3 <sup>3</sup> / <sub>4</sub>
Linnen washing	20	7	6 <sup>1</sup> / <sub>4</sub>
Confecty	33	13	6
Wax lights	71	19	0
Tallow D <sup>o</sup>	31	0	2 <sup>2</sup> / <sub>2</sub>
Spice to y <sup>e</sup> Tables	4	13	4 <sup>1</sup> / <sub>2</sub>
Basket Salt to D <sup>o</sup>		16	0
Flerk Kitchens Disb <sup>t</sup> s	42	13	6
Butter Eggs &c. Coff: room	12	0	0
Lamps	11	6	1 <sup>1</sup> / <sub>2</sub>
Woodyard	83	14	11 <sup>1</sup> / <sub>2</sub>
Board wages	130	0	6 <sup>1</sup> / <sub>4</sub>
Purveyors Travel & Charges	6	7	0
£	610	6	0 <sup>1</sup> / <sub>2</sub>
	262	5	7 <sup>1</sup> / <sub>2</sub>
Total of the Creditor £	872	11	0

Kitchen Abst<sup>s</sup> from May Creditor 1755

	£	s.	d.
Bread	1	19	10
Beer & Ale		17	6
Wine		17	0
Spice, Oil, Pickles &c.	13	7	1 <sup>1</sup> / <sub>4</sub>
Confecty	1	17	1
Butcher	58	7	1
Fishmonger	13	17	4 <sup>1</sup> / <sub>2</sub>
Bacon Lard &c.	9	11	1 <sup>1</sup> / <sub>2</sub>
Jellys	1	15	0
Com <sup>n</sup> Salt		12	0
Flerk Kitchens Disb <sup>t</sup> s	31	7	0
Pastry	19	1	6
Poultry	76	19	5
Butter Eggs &c.	21	1	0
Herbs & Roots.	10	15	7 <sup>1</sup> / <sub>4</sub>
713 Dishes at 6:2 <sup>1</sup> / <sub>4</sub> 219:18:8 <sup>1</sup> / <sub>2</sub>	£	262	5 7 <sup>1</sup> / <sub>2</sub>
Which exceeds 6:2 <sup>1</sup> / <sub>4</sub> 10:11 <sup>1</sup> / <sub>2</sub>		220	9 0
The Princesses Extras.		30	14 2 <sup>1</sup> / <sub>2</sub>
The Childerens Diet.		11	1 9
£		262	5 7 <sup>1</sup> / <sub>2</sub>



Household Abst<sup>ts</sup> from June Creditor 1755

	£	s.	d.
74312			
Bread	26	18	3 $\frac{1}{4}$
Beer & Ale	39	10	8 $\frac{1}{4}$
Wine	163	16	6
Bristol water	12	12	0
M <sup>r</sup> . Stillings Pleas Disb <sup>ts</sup>	19	4	0
Spice Oil &c to y <sup>e</sup> . Tables	24	2	9
Linnen washing	25	16	0
confecty	90	16	0
Wax lights	72	2	4
Tallow D <sup>o</sup> .	29	6	10 $\frac{3}{4}$
Cheese to y <sup>e</sup> . Tables	4	19	0 $\frac{1}{4}$
Baskett Salt to D <sup>o</sup> .		10	0
clerk Kitchens Disb <sup>ts</sup>	06	10	2 $\frac{1}{4}$
Butter Eggs &c. Coff: room	14	16	3 $\frac{1}{4}$
Lamps	11	16	3
Woodward	67	6	0 $\frac{3}{4}$
Board wages	119	11	0 $\frac{1}{4}$
Travelling Charges.	14	10	0
	£	830	18 8 $\frac{1}{4}$
		354	17 0 $\frac{3}{4}$
Total of the Creditor	£	1185	15 9

Kitchen Abst<sup>ts</sup> from June Creditor 1755

	£	s.	d.
Bread	4	16	8 $\frac{1}{2}$
Beer & Ale	1	1	6
Wine	2	10	0
Spice, Oil, Pickles &c.	20	6	11 $\frac{3}{4}$
Confecty	1	17	0 $\frac{1}{4}$
Butcher	74	2	9 $\frac{1}{2}$
Fishmongers	17	7	6
Bacon Lard &c.	11	3	4
Jellys	7	0	6
Contr Salt		15	0
clerk Kitchens Disb <sup>ts</sup>	40	9	9 $\frac{3}{4}$
Pastry	24	4	6
Poultry	99	15	7
Butter Eggs &c.	28	7	7 $\frac{1}{4}$
Herbs & Rob <sup>ts</sup> .	4	9	9
		354	17 0 $\frac{3}{4}$
920 Dishes a. 6:9. 310: 5:0			
which exceeds 6:9 — 18:4 $\frac{3}{4}$		311	3 4 $\frac{3}{4}$
The Princesses Extras		12	16 9 $\frac{1}{2}$
The Childrens Diet		30	16 10 $\frac{1}{2}$
	£	354	17 0 $\frac{3}{4}$



Household Abst<sup>s</sup> from July Creditor 1755

74313	£	s	d
Bread	26	14	13 <sup>1</sup> / <sub>4</sub>
Beer & Ale	30	6	11
Wine	100	0	0
Bristol water	11	11	0
M <sup>r</sup> . Stillingfleets Disb <sup>ts</sup>	3	13	6
Spice, oil &c to y <sup>e</sup> Tables	23	10	0
Linnen washing	20	15	0
Confecty	43	13	6
Wax lights.	60	19	6
Tallow &c	30	0	3 <sup>1</sup> / <sub>2</sub>
Cheese to y <sup>e</sup> Tables	5	9	3 <sup>2</sup> / <sub>4</sub>
Clerk Kitchens Disb <sup>ts</sup>	63	0	11
Butter Eggs &c Cott. room	15	6	9 <sup>3</sup> / <sub>4</sub>
Lamps	12	4	1 <sup>1</sup> / <sub>2</sub>
Wood yard	44	2	5 <sup>3</sup> / <sub>4</sub>
Boat wages.	122	17	0
Baskett Salt		16	0
Purveyors Trag Charges.	15	1	6
£	649	7	3 <sup>1</sup> / <sub>4</sub>
	303	14	6
Total of the Creditor £	953	1	9 <sup>1</sup> / <sub>4</sub>

Kitchen Abst<sup>s</sup> from July Creditor 1755

	£	s	d
Bread	5	7	9 <sup>1</sup> / <sub>2</sub>
Beer & Ale	1	3	1
Wine	1	16	6
Spice, oil Pickles &c	15	10	1
Confecty	2	4	9
Butcher	69	0	10 <sup>1</sup> / <sub>2</sub>
Fishmonger.	13	11	6 <sup>1</sup> / <sub>2</sub>
Bacon Lard &c	10	4	4 <sup>3</sup> / <sub>4</sub>
Jellys	2	0	6 <sup>1</sup> / <sub>4</sub>
Cond <sup>r</sup> Salt		10	0
Clerk Kitchens Disb <sup>ts</sup>	24	0	0
Pastry	22	6	6
Poultry	91	9	3
Butter Eggs &c	31	4	10 <sup>1</sup> / <sub>4</sub>
Herbs & Roots	3	9	11
	303	14	6
854 Dishes a <sup>b</sup> . 6. 257: 2: 0			
which Exceeds 6. 12: 8 <sup>1</sup> / <sub>2</sub>			
The Princesses Extras	15	3	2
The Childerens Diet	30	16	7 <sup>1</sup> / <sub>2</sub>
£	303	14	6



Household Abst<sup>ts</sup> from Aug<sup>r</sup> Creditor 1755

	£	s	d
74314			
Bread	27	10	11 <sup>3</sup> / <sub>4</sub>
Beer & Ale	35	2	6
Wine	132	11	6
Bristol water	13	13	0
M <sup>r</sup> Stillingfleets Disb <sup>ts</sup>	4	8	6
Spice Oil &c. to y <sup>e</sup> Tables	23	17	2 <sup>1</sup> / <sub>4</sub>
Linnen washing	25	14	7
Confecty	73	10	6
Wax lights	73	2	0
Tallow D <sup>o</sup>	30	6	11 <sup>1</sup> / <sub>4</sub>
Cheese to y <sup>e</sup> Tables	5	10	3
Baskett Salt to D <sup>o</sup>		16	0
Clerk Kitchens Disb <sup>ts</sup>	72	12	9
Butter Eggs &c. off: room	15	16	2
Lamps	12	4	1 <sup>1</sup> / <sub>2</sub>
Woodyard	50	9	0 <sup>1</sup> / <sub>2</sub>
Boardwages	124	2	6 <sup>2</sup> / <sub>4</sub>
Purveyors Tra <sup>y</sup> Charges	15	4	0
£	736	13	2 <sup>1</sup> / <sub>4</sub>
	327	2	5 <sup>1</sup> / <sub>4</sub>
Total of the Creditor	£ 1063	15	7 <sup>1</sup> / <sub>2</sub>

Kitchen Abst<sup>ts</sup> from Aug<sup>r</sup> Creditor 1755

	£	s	d
Bread	5	7	0 <sup>1</sup> / <sub>2</sub>
Beer & Ale	1	2	3
Wine	2	15	3
Spice, Oil, Pickles &c	24	3	7 <sup>1</sup> / <sub>2</sub>
Confecty	1	1	3
Butcher	77	1	4
Fishmonger	21	3	5 <sup>1</sup> / <sub>4</sub>
Bacon Lard &c	11	9	0
Jellys	3	1	0
Com <sup>n</sup> Salt		15	0
Clerk Kitchens Disb <sup>ts</sup>	20	3	0 <sup>1</sup> / <sub>2</sub>
Pastry	25	10	9
Poultry	96	13	1
Butter & Eggs &c	30	12	6 <sup>1</sup> / <sub>2</sub>
Herbs & Roots	6	2	8 <sup>2</sup> / <sub>4</sub>
072 Dishes at 6:5 <sup>3</sup> / <sub>4</sub> 202:9:10	327	2	5 <sup>1</sup> / <sub>4</sub>
which exceeds 6:5 <sup>3</sup> / <sub>4</sub> 7:1 <sup>1</sup> / <sub>2</sub>	282	2	8 <sup>1</sup> / <sub>2</sub>
The Princesses Extras	14	7	13 <sup>3</sup> / <sub>4</sub>
The Childerens Diet	30	12	7 <sup>1</sup> / <sub>4</sub>
£	327	2	5 <sup>1</sup> / <sub>4</sub>



Household Abst<sup>ns</sup> from Sept<sup>r</sup> Creditor 1755

74315	£	s	d
Bread	27	1	10 <sup>1</sup> / <sub>4</sub>
Beer & Ale	30	16	7 <sup>1</sup> / <sub>4</sub>
Wine	122	10	9
Bristol water	14	16	0
M <sup>r</sup> . Stillingfleets Disb <sup>ts</sup>	20	4	6
Spice Oil &c to y <sup>e</sup> Tables	22	1	9 <sup>3</sup> / <sub>4</sub>
Linnen washing	19	9	9 <sup>1</sup> / <sub>2</sub>
Confecty	40	12	6
Wax lights	66	16	3
Tallow D <sup>o</sup>	28	15	6
Cheese to y <sup>e</sup> Tables	5	4	3
Baskett Salt to D <sup>o</sup>		16	0
Clerk Kitchen's Disb <sup>ts</sup>	83	19	11 <sup>1</sup> / <sub>4</sub>
Lamps	11	16	3
Woodyeard	77	19	6
Butter Eggs &c. Cott. room	15	17	3 <sup>1</sup> / <sub>4</sub>
Board wages	210	2	6
Purveyors Tra <sup>g</sup> Charges	14	12	6
£	813	13	9
	270	15	0
Total of the Creditor <sup>s</sup> £	1084	0	9

Kitchen Abst<sup>ns</sup> from Sept<sup>r</sup> Creditor 1755

	£	s	d
Bread	3	18	6
Beer & Ale	1	0	0
Wine	1	12	6
Spice Oil, Pickles &c	14	15	4
Confecty	1	12	9
Butcher	64	4	2 <sup>1</sup> / <sub>2</sub>
Fishmonger	20	4	1 <sup>1</sup> / <sub>2</sub>
Bacon Lard &c	14	17	4
Barrel Oysters	3	10	9
Quarts D <sup>o</sup> for Sauce &c	2	16	0
Jellys	1	2	6
Com <sup>l</sup> Salt		15	0
Clerk Kitchen's Disb <sup>ts</sup>	13	11	7
Pastry	16	4	6
Poultry	76	17	4
Butter & Eggs &c	28	8	8
Herbs & Roots	4	15	11
765 Dishes a <sup>l</sup> 5:11 <sup>3</sup> / <sub>4</sub> 225:10:3 <sup>3</sup> / <sub>4</sub>	270	15	0
which Exceeds 5:11 <sup>3</sup> / <sub>4</sub> 1	225	10	13 <sup>3</sup> / <sub>4</sub>
The Princesses Extras	18	14	10 <sup>3</sup> / <sub>4</sub>
The Childrens Diet	26	9	8 <sup>1</sup> / <sub>2</sub>
£	270	15	0



Household Abst<sup>ts</sup> from Octo<sup>r</sup> Creditor 1755

74316	£	s	d
Bread	26	3	0 $\frac{1}{2}$
Beer & Ale	29	17	0 $\frac{1}{2}$
Wine	124	0	6
Bristol water	12	1	6
M <sup>r</sup> Stillingfleets Disb <sup>ts</sup>	3	19	0
Spice, Oil &c to y <sup>e</sup> Tables	22	0	9
Linnen washing	18	10	7 $\frac{1}{2}$
Confecty	40	17	6
Wax lights	67	9	7
Tallow D <sup>o</sup>	30	5	7
Cheese to y <sup>e</sup> Tables	4	14	10 $\frac{1}{2}$
Baskett Salt to D <sup>o</sup>	.	0	0
Clerk Kitchens Disb <sup>ts</sup>	76	17	5
Butter Eggs &c off: room	17	3	2 $\frac{1}{4}$
Lamps	12	4	1 $\frac{1}{2}$
Woodyard	03	13	1 $\frac{3}{4}$
Boards wages	154	0	0 $\frac{1}{4}$
Purveyors Bray Charges	15	1	6
£	741	0	0
	203	11	3
Total of y <sup>e</sup> Creditor. £	1024	11	11

Kitchen Abst<sup>ts</sup> from Octo<sup>r</sup> Creditor 1755

	£	s	d
Bread	4	0	0 $\frac{1}{4}$
Beer & Ale	1	0	0
Wine	1	9	6
Spice, Oil, Pickles &c	17	2	10
Confecty	1	0	3
Butcher	67	13	10
Fishmonger	20	13	2 $\frac{1}{2}$
Bacon Lard &c	0	0	4
Barrel Oysters	0	12	0
Quarts M <sup>o</sup> for Sauce &c	3	5	0
Jellys	2	5	6
Com <sup>n</sup> Salt.	.	15	0
Clerk Kitchens Disb <sup>ts</sup>	15	4	0
Pastry	14	6	0
Poultry	02	5	3
Butter & Eggs &c	25	12	4 $\frac{3}{4}$
Herbs & Roots	9	0	9 $\frac{1}{2}$
766 Dishes a. 6: 0 $\frac{1}{2}$ 231: 7: 11	203	11	3
which exceeds 6: 0 $\frac{1}{2}$ 11: 11	231	19	10
The Princesses Extras	17	4	1
The Childrens Diet	34	7	4
£	203	11	3



Household Abst.<sup>ts</sup> from Nov.<sup>r</sup> Creditor 1755

	£	s	d
74317			
Bread	22	8	5 <sup>1</sup> / <sub>4</sub>
Beer & Ale	21	5	0
Wine	104	5	0
Bristol water	11	11	0
M <sup>r</sup> Stillingfleets Dist <sup>ts</sup>	3	7	6
Spice, Oil, &c to y <sup>e</sup> Tables	22	1	1
Linnen washing	21	4	7
Confecty	31	1	0
Wax lights	83	16	9
Tallow D <sup>o</sup>	30	15	4
Cheese to y <sup>e</sup> Tables	4	5	8 <sup>1</sup> / <sub>4</sub>
Baskett. Salt to D <sup>o</sup>	.	8	0
Clerk Kitchens Dist <sup>ts</sup>	74	14	2 <sup>1</sup> / <sub>2</sub>
Butter Eggs &c Coff: room	11	12	6 <sup>2</sup> / <sub>2</sub>
Lamps	10	19	4 <sup>1</sup> / <sub>2</sub>
Wood yard	144	14	5 <sup>1</sup> / <sub>4</sub>
Board wages	143	12	0
Putveyors Tra: g charges	3	12	0
£	745	13	10 <sup>3</sup> / <sub>4</sub>
	253	11	9 <sup>1</sup> / <sub>4</sub>
Total of the Creditor. £	999	5	7 <sup>3</sup> / <sub>4</sub>

Kitchen Abst.<sup>ts</sup> from Nov.<sup>r</sup> Creditor 1755

	£	s	d
Bread	1	0	9
Beer & Ale	.	17	0
Wine	.	17	6
Spice, Oil, Pickles &c	11	15	3
Confecty	1	9	9
Butcher	55	7	8 <sup>1</sup> / <sub>2</sub>
Fishmonger	16	2	4 <sup>1</sup> / <sub>2</sub>
Bacon Lard &c	9	11	3 <sup>2</sup> / <sub>2</sub>
Barrel Oysters	0	0	0 <sup>1</sup> / <sub>2</sub>
Quarts D <sup>o</sup> for Sauce &c	3	11	3
Jellys	2	19	0
Com. <sup>r</sup> Salt	.	15	0
Clerk Kitchens Dist <sup>ts</sup>	15	3	4
Pastry	14	14	9
Poultry	75	10	1
Butter & Eggs &c	18	19	3 <sup>1</sup> / <sub>2</sub>
Herbs & Roots	15	10	9 <sup>1</sup> / <sub>2</sub>
632 Dishes a. 6: 3 <sup>1</sup> / <sub>4</sub> 190: 3: 2 <sup>1</sup> / <sub>2</sub>	253	11	9
which Exceeds 6: 3 <sup>1</sup> / <sub>4</sub> 2: 0	198	5	2
The Princesses Extras	20	0	0
The Childrens Diet	35	6	7
£	253	11	9



Household Abst<sup>ts</sup> from Decem<sup>r</sup> Credit<sup>r</sup> 1755

	£	s.	d.
74318			
Bread	18	0	1 $\frac{1}{4}$
Beer & Ale	10	11	10
Wine	59	5	6
Bristol water	11	11	0
M <sup>r</sup> Stillin <sup>g</sup> of Cets Dist <sup>ts</sup>	16	3	6
Spice, Oil & to y <sup>e</sup> Tables	16	13	2 $\frac{3}{4}$
Linnen washing	18	5	6 $\frac{1}{4}$
Confecty	28	17	6
Wax lights	86	12	7
Tallow D <sup>o</sup>	31	11	6
Sheep to y <sup>e</sup> Tables	3	0	7 $\frac{1}{2}$
Basket Salt to D <sup>o</sup>		0	0
Clerk Kitchen's Dist <sup>ts</sup>	85	6	7
Butter Eggs & Cott <sup>r</sup> room	10	4	3 $\frac{1}{2}$
Lamps	10	13	1 $\frac{1}{2}$
Woodyard	141	5	5 $\frac{1}{2}$
Board wages	150	15	6
	£	700	1 10
		240	2 1 $\frac{1}{4}$
Total of the Creditor	£	940	3 11 $\frac{1}{4}$

Kitchen Abst<sup>ts</sup> from Decem<sup>r</sup> Credit<sup>r</sup> 1755

	£	s.	d.
Bread	3	6	4
Beer & Ale		14	2
Wine	1	0	0
Spice, oil Pickles &c	12	19	9 $\frac{1}{4}$
Confecty	1	18	6
Butcher	46	17	6
Fishmonger	20	11	1 $\frac{1}{2}$
Bacon Lard &c	4	4	4
Barrel Oysters	7	12	0
Quarts D <sup>o</sup> for Sauce &c	2	2	0
Jellys	4	0	10
Comm <sup>n</sup> Salt		9	0
Clerk Kitchen's Dist <sup>ts</sup>	12	3	7
Pastry	13	18	9
Poultry	76	5	2
Butter & Eggs &c	17	14	0 $\frac{1}{2}$
Herbs & Roots	14	5	0
589 Dishes a. b. 3. 104. 1. 3	£	240	2 1 $\frac{1}{4}$
Exceeds b. 3. 17. 2 $\frac{1}{4}$		184	10 5 $\frac{1}{4}$
The Princeps Extras		18	12 7
The Childrens Diet		36	11 1
	£	240	2 1 $\frac{1}{4}$

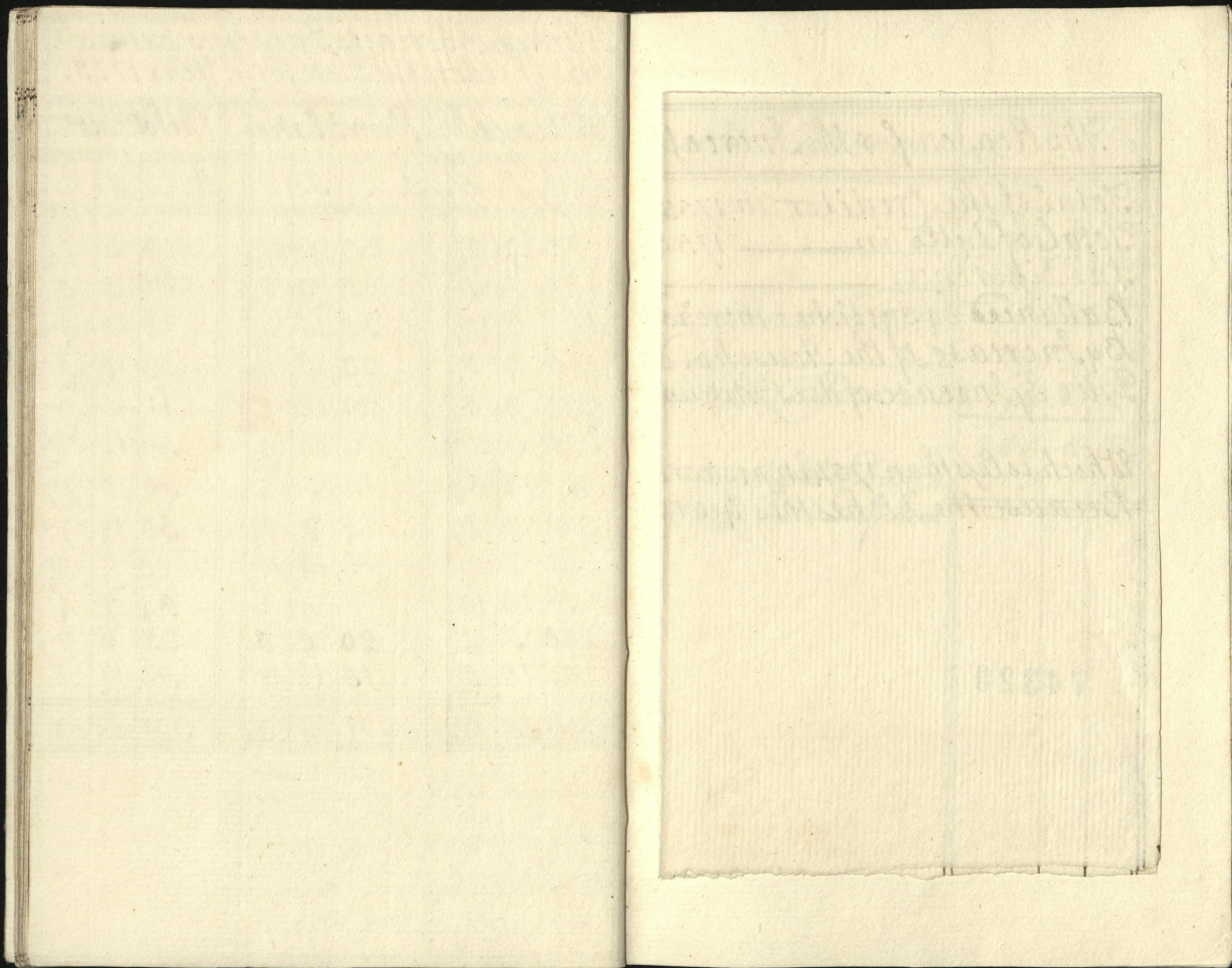


Creditors, & Household Abstracts  
For y.<sup>o</sup> Year 1755.

Kitchen Abstracts Princesses Extras,  
and Childerens Diet, for y.<sup>o</sup> Year 1755.

Months	Creditors			Household			Kitchen			Prin. <sup>s</sup> Extras			Child. <sup>rs</sup> Diet.		
	£	s.	d.	£	s.	d.	£	s.	d.	£	s.	d.	£	s.	d.
	74319														
January	849	1	3 $\frac{1}{4}$	627	10	1 $\frac{1}{2}$	174	19	2 $\frac{1}{2}$	29	0	10 $\frac{1}{4}$	17	3	1
February	758	14	3 $\frac{3}{4}$	545	16	10 $\frac{1}{4}$	167	5	1	28	9	8 $\frac{1}{2}$	17	2	8
March	903	9	4 $\frac{3}{4}$	658	1	9 $\frac{1}{4}$	186	2	11 $\frac{1}{4}$	35	14	4 $\frac{1}{4}$	23	10	4
April	754	9	9 $\frac{3}{4}$	534	15	4 $\frac{1}{2}$	176	4	0 $\frac{1}{4}$	29	17	0	13	13	5
May	872	11	8	610	6	0 $\frac{1}{2}$	220	9	8	30	14	2 $\frac{1}{2}$	11	1	9
June	1185	15	9	830	18	8 $\frac{1}{4}$	311	3	4 $\frac{3}{4}$	12	16	9 $\frac{1}{2}$	30	16	10 $\frac{1}{2}$
July	953	1	9 $\frac{1}{4}$	649	7	3 $\frac{1}{4}$	257	14	8 $\frac{1}{2}$	15	3	2	30	16	7 $\frac{1}{2}$
August	1063	15	7 $\frac{1}{2}$	736	13	2 $\frac{1}{4}$	282	2	8 $\frac{1}{2}$	14	7	13 $\frac{1}{4}$	30	12	7
September	1084	8	9	813	13	9	225	10	4 $\frac{3}{4}$	18	14	10 $\frac{3}{4}$	26	9	8 $\frac{1}{2}$
October	1024	11	11	741	0	8	231	19	10	17	4	1	34	7	4
November	999	5	7 $\frac{3}{4}$	745	13	10 $\frac{3}{4}$	198	5	2	20	0	0	35	6	7
December	940	3	11 $\frac{1}{4}$	700	1	10	184	18	5 $\frac{1}{4}$	18	12	7	36	11	1
Total - £	11389	9	10 $\frac{1}{4}$	8193	19	5 $\frac{1}{2}$	2616	15	6 $\frac{3}{4}$	271	2	9 $\frac{1}{2}$	307	12	0 $\frac{1}{2}$
Total Kitch. <sup>rs</sup> £				2616	15	6 $\frac{3}{4}$									
Total Prin. <sup>s</sup> Ex. <sup>ras</sup> £				271	2	9 $\frac{1}{2}$									
Total Child. <sup>rs</sup> Diet. £				307	12	0 $\frac{1}{2}$									
Total of y. <sup>o</sup> Year £	11389	9	10 $\frac{1}{4}$												







The Reason for the Increase of the Creditor 1755	£.	s.	d.
Total of the Creditor in 1755	11380	9	10 $\frac{1}{4}$
Total of Ditto in 1754	11118	2	9
The Difference	271	7	1 $\frac{1}{4}$
Ballanced by 39 Dishes increased for Bro at 6 s. p. 1 $\frac{1}{2}$	122	3	9
By Increase of the Household	90	4	3 $\frac{3}{4}$
Ditto by Increase of Hor. L. Hightures Eat, & Childrens Diet	74	0	2
Which is less than 1754 in proportion to the n <sup>o</sup> of Dishes	286	8	2 $\frac{3}{4}$
Because the Dishes this year are $\frac{1}{2}$ less than y <sup>r</sup> last	15	1	1 $\frac{1}{4}$

74320



