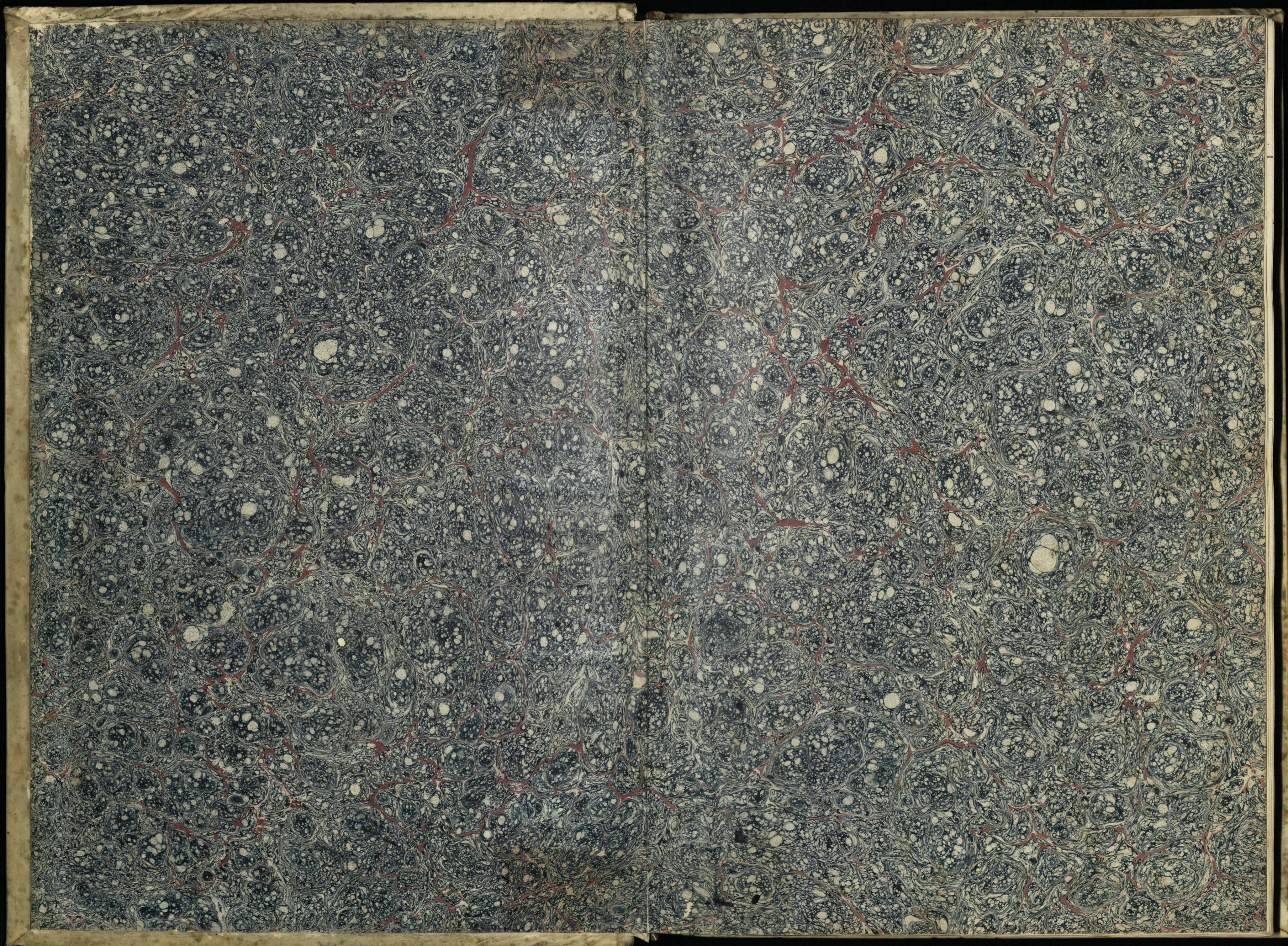


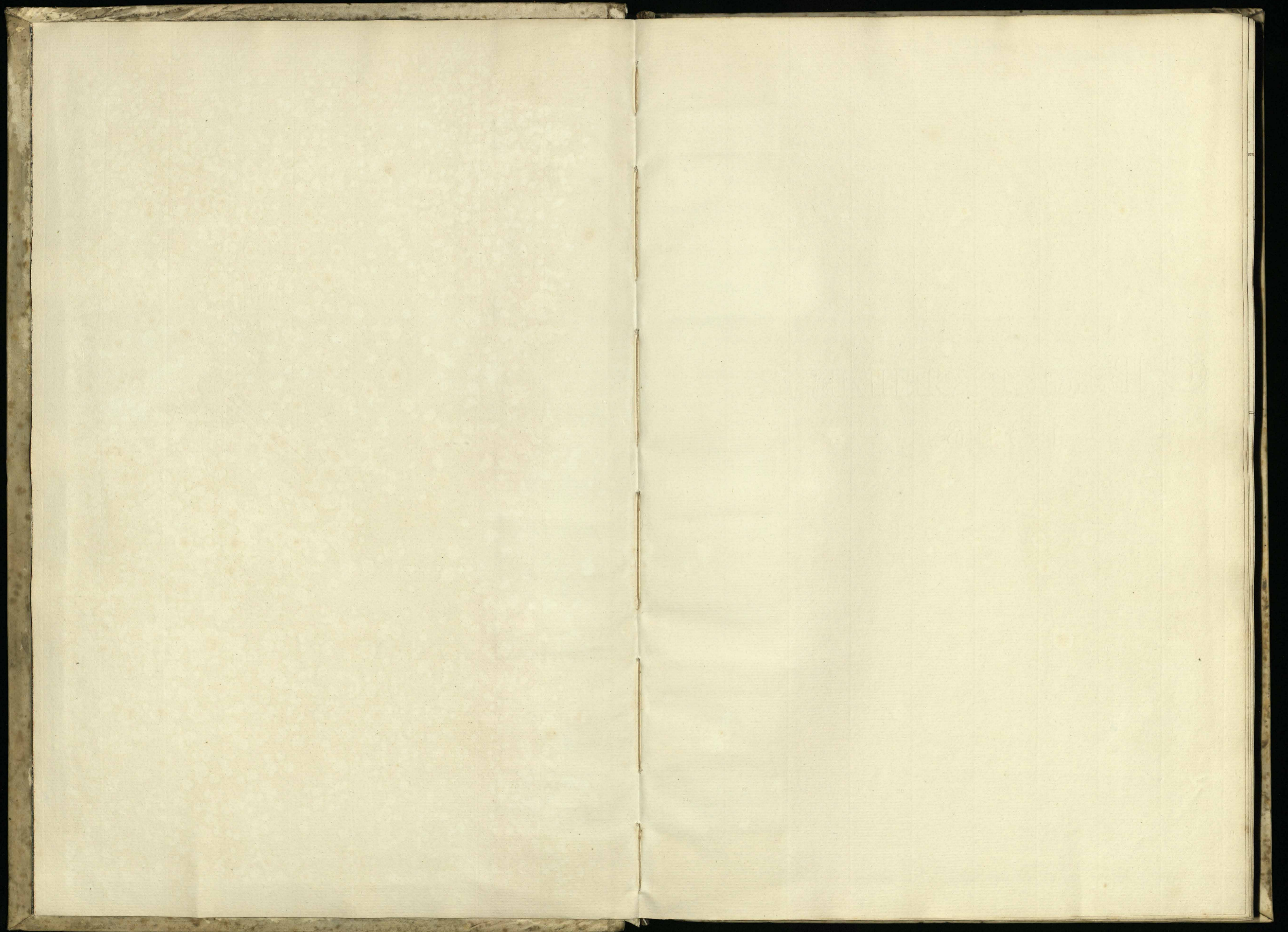
BUTTER & EGG
MILK & CREAM
MENSIL.



1818

Butter
&
Eggs
from
April
1818..





MRH/MRHF/GOODSREC/DAIRY/MAIN/2

①

Milk & Cream served to Prince Regent's Household from 5th April to the 5th May 1818. by Tho: Coomber

		6	7	8	9	10	11	12	13	14	15	16	17	18	19	20	21	22	23	24	25	26	27	28	29	30	1	2	3	4	5
Coffee Room	Milk Qua	7	7 1/2	8 1/2	8	8 1/2	9	8	8	7 1/2	9	8 1/2	8 1/2	9 1/2	8	10	5 1/2	8 1/2	8 1/2	7 1/2	8 1/2	8 1/2	13	6	10 1/2	9 1/2	11	9	9	11 1/2	11
	Cream Pints	4	4	4	4	4	4	4	4	4	4	4	4	4	4	15	4 1/2	4	4	4	4	4	20 1/2	4	4 1/2	4	4	4	4	4 1/2	4

Milk Cream
 ✓ 263.
 ✓ 149

Milk & Cream served as above by Fra: Bruffell

Confectionary	Milk Pints	1	1	1	1	1	1	1	1	1	1	1	1	1	1	1	1	1	1	1	1	1	1	1	1	1	1	1	1	1	1	1
	Cream	1/2	1/2	1/2	1/2	1/2	1/2	1/2	1	1/2	1/2	1/2	1/2	1/2	1/2	7/2	1/2	1/2	1/2	1/2	1/2	1/2	12 1/2	1/2	1/2	1/2	1/2	1/2	1/2	1/2	1/2	
	Dble S ^r S ^r				1	2	2				1	2	6										1	6								

Milk Cream Dble
 ✓ 30.
 ✓ 35 1/2
 ✓ 21.

Butter Eggs served as above by Stephen Cullum.

Coffee Room	Butter lb	3 1/2	3	3	3 1/2	3	6	3 1/2	4	4 1/2	4	3	7	5	3	3 1/2	3	4	6 1/2		5	4	4	4 1/2	4	8 1/2	3	3		
	Palls	48	44	56	42	24	84	30	54	42	48	48	84	64	36	36	36	36	84		36	36	36	36	36	84	36	36		
	New laid Eggs									12			12						12		12		12			12				
Confectionary	Butter lb	1/2	1/2	1/2	1/2	1/2	1	1/2	1/2	1/2	1/2	1/2	1/2	1/2	1/2	1/2	1/2	1/2	1/2		1/2	1/2	1/2	1/2	1	1/2				
	Eggs Hund ^s				1/2	1/2	1/2	1/2	1/2	1/2	1/2	1/2	1/2	1/2	1/2	1/2	1/2	1/2	1/2		1/2	1/2	1/2	1/2	1/2	1/2	1/2	1/2	1/2	1/2

Butter Palls Eggs New laid Eggs
 ✓ 109 -
 ✓ 1202
 ✓ 72
 ✓ 12 1/2
 ✓ 2 3/4
 ✓ 121 1/2 1202 2 3/4 72

Milk & Cream served to Prince Regent's Household from 6 May to 5 June 1818

			6	7	8	9	10	11	12	13	14	15	16	17	18	19	20	21
Coffee Room	Milk	Quarts	11	11	11 1/2	11	11	11	11	10	10	11	11	11	10 1/2	12	11	11
	Cream	Pints	4	4	4 1/2	4	4	4	4	4	4	5 1/2	4	4	4 1/2	11	4	4

by Thomas Coomber

			22	23	24	25	26	27	28	29	30	31	1	2	3	4	5
	Milk	Quarts	11	11 1/2	11	7 1/2	7	8	8 1/2	8 1/2	10	10	11	14	10	10	11
	Cream	Pints	4	4	4	4	4	4	4	4	4	4	4	9	23	4	4

Quart Pints
Milk Cream
32 4
17 1/2

Milk & Cream served as above by Fred. Truffitt

			6	7	8	9	10	11	12	13	14	15	16	17	18	19	20	21
Confectionary	Milk	Pints	1	1	1	1	2	2	1	1	1	1	1	1	1	1	1	1
	Cream	Pints	1/2	1/2	1/2	1/2	1/2	1/2	1/2	1	1 1/2	1/2	1/2	1/2	1 1/2	1/2	1/2	1/2
	Stale P ^d		1	1														

			22	23	24	25	26	27	28	29	30	31	1	2	3	4	5
	Milk	Pints	1	1	1	1	1	1	1	1	1	1	1	1	1	1	1 1/2
	Cream	Pints	2	1/2	1/2	1/2	1/2	1/2	1/2	1/2	1/2	1/2	10 1/2	9 1/2	1/2	1/2	1
	Stale P ^d												2	11			

Milk Cream Stale Cream
32 1/2
55 1/2
12

Butter & Eggs served as above by Stephen Cullum

			6	7	8	9	10	11	12	13	14	15	16	17	18	19	20	21
Coffee Room	Butter	Lb	4	4	4	8 1/2	3	3	3	4	4	7 1/2	3 1/2	4	4	4 1/2		
	Salt	Lb	36	36	36	84	12	36	32	36	36	84	3	36	36	3		
	New Laid Eggs		12		6		12		12	12				12		12		

			22	23	24	25	26	27	28	29	30	31	1	2	3	4	5
	Butter	Lb	4	8	3		3	3	3	3 1/2	6		4	5	3	3	3 1/2
	Salt	Lb	48	84	36		3	28	36	36	48		36	36	36	36	36
	New Laid Eggs		12				6	6		6			6				6

Butter Salt New Laid Eggs
113.
1007.
120.
113. 1007. 120

			6	7	8	9	10	11	12	13	14	15	16	17	18	19	20	21
Confectionary	Butter	Lb	1/2	1/2	1/2	1/2	1/2	1/2	1/2	1/2	1/2	1/2	1/2	1/2	1/2	1/2	1/2	1/2
	Egg	Shells	1/2	1/2	1/2	1/2	1/2	1/2	1/2	1/2	1/2	1/2	1/2	1/2	1/2	1/2	1/2	1/2

			22	23	24	25	26	27	28	29	30	31	1	2	3	4	5
	Butter	Lb	1/2	1/2	1/2	1/2	1/2	1/2	1/2	1/2	1/2	1/2	1/2	1/2	1/2	1/2	1/2
	Egg	Shells	1/2	1/2	1/2	1/2	1/2	1/2	1/2	1/2	1/2	1/2	1/2	1/2	1/2	1/2	1/2

12 1/2
125 1/2 1007 120. 6

Milk & Cream served to Prince Regent's Household from 6 June to 5 July 1818 by Tho' Coomber

		6	7	8	9	10	11	12	13	14	15	16	17	18	19	20	21	22	23	24	25	26	27	28	29	30	1	2	3	4	5
Coffee Room	Milk L ^r	9 1/2	10	10	9	9	9	10	10	11	11	11	13	11	11	9 1/2	9	10	13	10	10	11	11	11 1/2	11 1/2	10 1/2	11 1/2	11 1/2	11 1/2	11 1/2	11 1/2
	Cream Pint	4	4	4	4	4	4	4	4	4	4	6 1/2	4	16 1/2	4	3	4	4	16 1/2	4	4	4	4	4	4	4	4	6	4	4	4

Milk 2ⁿ Cream Pint
 318 1/2
 148 1/2

Milk & Cream served as above by Francis Truffitt

		6	7	8	9	10	11	12	13	14	15	16	17	18	19	20	21	22	23	24	25	26	27	28	29	30	1	2	3	4	5
Confectionary	Milk Pint	1	1	1	1	1	1	1	1	1	1	1	1	1	1	1	1	1	1	1	1	1	1	1	1	1	1	1	1	1	1
	Cream	1/2	1/2	1/2	1/2	1/2	1/2	1/2	1/2	1/2	1/2	1/2	1/2	1/2	1/2	1/2	1	1/2	16 1/2	1/2	1/2	1/2	1/2	1/2	1/2	1/2	1/2	1/2	1/2	1/2	
	Double D ^r																4	3	0												

Milk 2ⁿ Cream Pint
 15
 18

Butter & Eggs served as above by Stephen Cullum

		6	7	8	9	10	11	12	13	14	15	16	17	18	19	20	21	22	23	24	25	26	27	28	29	30	1	2	3	4	5
Coffee Room	Butter D	6	3	3	3	3	3	6	3	3 1/2	4	4	3	6 1/2	3	4	4	2	3	6 1/2	4	4	4	3	4	6 1/2					
	Pails	48	36	36	36	36	36	60	36	36	36	48	36	36	36	36	36	36	60	36	36	36	36	60	36	36	36	39	36	60	
	New Laid Eggs	6	6	6	6	6	6	6	12	12	12	6	6	12	6	6															
Confectionary	Butter D	1/2	1/2	1/2	1/2	1/2	1/2	1/2	1/2	1/2	1/2	1/2	1/2	1/2	1/2	1/2	1/2	1/2	1/2	1/2	1/2	1/2	1/2	1/2	1/2	1/2	1/2	1/2	1/2	1/2	
	Eggs Hand																	1/2	1/2												

Butter Pails Eggs New Laid Eggs
 100
 999
 120
 10 1/2
 2 3/4
 110 1/2 999 2 3/4 120

Milk & Cream served to Prince Regent's Household from 6 July to 5 August 1810

by Mrs. Coomber

		6	7	8	9	10	11	12	13	14	15	16	17	18	19	20	21	22	23	24	25	26	27	28	29	30	31	1	2	3	4	5
Coffee Room	Milk Lbs	11	10 1/2	10 1/2	10 1/2	10 1/2	10 1/2	10 1/2	10 1/2	10 1/2	13 1/2	10 1/2	11	10 1/2	10 1/2	11	11	11	11	10 1/2	10 1/2	11	12	10	10	10	10	10	10	10	10	
	Cream Pints	4	4	4	4 1/2	4	4	4	4 1/2	4 1/2	13	4 1/2	4 1/2	4 1/2	4 1/2	4 1/2	4 1/2	4 1/2	4 1/2	4 1/2	4 1/2	4 1/2	4 1/2	4 1/2	4 1/2	4 1/2	4 1/2	4 1/2	4 1/2	4 1/2	4 1/2	

Milk Cream
 329
 145

Milk & Cream served as above by Fra. Pruffitt

		6	7	8	9	10	11	12	13	14	15	16	17	18	19	20	21	22	23	24	25	26	27	28	29	30	31	1	2	3	4	5
Confectionary	Milk Lbs	1	1	1														1														
	Cream	1/2	1/2	1/2	1/2	1/2	1/2	1/2	1/2	1/2	1 1/2	1/2	3/4	1/2	1/2	1/2	1/2	1/2	1/2	1/2	1/2	1	1/2	1/2	1/2	1/2	1/2	1/2	1/2	1/2	1/2	
	Stk	1								1	1																					

Milk Cream. Stk Cream
 4
 30 1/2 6

Butter & Eggs served as above by Stephⁿ Cullum

		6	7	8	9	10	11	12	13	14	15	16	17	18	19	20	21	22	23	24	25	26	27	28	29	30	31	1	2	3	4	5
Coffee Room	Butter lb	3	3	4	3	3	6 1/2	4	3	5	3	3	7	4	3			4	3	3	6	3	3	3	3	7	3	3	3			
	Patts	40	40	40	40	40	60	40	40	40	40	40	48	40	40			34	36	36	60	36	40	40	40	40	80	40	40	40		
	New-laid Eggs	12	6	12		12	12	12	12	6	12		12		6			12		6	12	12	12		12		12		12			

Butter Patts New-laid Eggs Egg Wind
 101 1/2
 1150
 204
 101 1/2 1150 204

Confectionary	Butter lb	1/2	1/2		1/2	1/2	1/2	1/2	1/2	1/2	1/2	1/2	1/2	1/2	1/2	1/2	1/2	1/2	1	1/2	1/2	1/2	1/2	1/2	1					2	
	Egg Wind				1/2	1/2	1/2	1/2	1/2	1/2	1/2	1/2	1/2	1/2	1/2	1/2	1/2	1/2													2

12 1/2
 114 1150 204 2

Milk & Cream served to Prince Regent's Household from 6 Aug to 5 Sept. 1810.

	6	7	8	9	10	11	12	13	14	15	16	17	18	19	20	21
Coffee Room																
Milk L ^{ts}	9	9	9	10	10	10	11	11	10	10	10	10	8	9	9	7
Cream Pints	2	2	2	5	4	4	5	4	4	4	4	4	3	3	3	3

Milk 21
Cream 11 1/2
262 3/4
91 1/2 ✓

Confectionary as above by F. Duffett

	6	7	8	9	10	11	12	13	14	15	16	17	18	19	20	21
Milk																
Cream P ^{ts}	1/2	1/2	1/2	1/2	1/2	1/2	1/2	1/2	1/2	1/2	1/2	1/2	1/2	1/2	1/2	1/2
Milk S	1															1

Milk Cream 15 1/2
Dbl Cream 2 ✓

Butter & Eggs served as above by Stephⁿ Cullum

	6	7	8	9	10	11	12	13	14	15	16	17	18	19	20	21
Coffee Room																
Butter L ^{bs}	3	3 1/2	4	3	3	5	3	3	4 1/2	3 1/2	3	3	3	2	7	
Fats				60	60	40	60	4	60	60	4	28	4	20	16	16
New laid Eggs	6	12	12	6	6	6	12					12		12	6	6

Butter 104 1/2
Fats 470
New Eggs 96
Eggs 1 ✓

	6	7	8	9	10	11	12	13	14	15	16	17	18	19	20	21
Confectionary																
Butter L ^{bs}	1/2															1/2
Eggs																1/2

5 1/2
110
470
96
1 ✓

Milk & Cream served to Prince Regent's Household from 11. Octob^r to 5th November 1810. by Cromber

	11	12	13	14	15	16	17	18	19	20	21	22	23	24	25	26	27	28	29	30	31	1	2	3	4	5
Coffee Room																										
Milk Lini	10	10	10	10	10	10	10	10	10	10	10	10	10	10	10	10	10	10	10	10	10	10	10	10	10	10
Cream pins	3/4	3	3	4	3	3	3	4	4	4	4	4	4	4	4	4	4	3 1/2	3	3	3	4	3	3	3	3

Milk Cream
260
91

Confectionary as above by Truffitt

Milk Lini																										
Cream Pins	3/4	1/2	1/2	1/2	1/2	1/2	1/2	1/2	1/2	1/2	1/2	1/2	1/2	1/2	1/2	1/2	1/2	1/2	1/2	1/2	1/2	1/2	1/2	1/2	1/2	
etc	1																									

Milk Cream
16
1

Butter & Eggs served as above by Steph^r Cullum

	11	12	13	14	15	16	17	18	19	20	21	22	23	24	25	26	27	28	29	30	31	1	2	3	4	5
Coffee Room																										
Milk Lini	3	3	4	4	3 1/2	9	4	3 1/2	4	3	3	9	3	3	3	3	3	4	3	3 1/2	8	3	3 1/2	3 1/2	3	
Patts	30	18	18	12	18	60	30	30	30	30	20	60	30	30	30	30	30	30	30	30	30	30	30	30	30	
New Laid Eggs	6	6	6	6	12		6	6				6	6				6	6					6	6	6	

Butter Patts
90 1/2
606
90
90 1/2 606 90

Confectionary

Butter	1/2	1/2		1/2	1/2	1/2	1/2	1/2	1	1/2		1/2					1/2	1/2	1/2		1/2				
Eggs	1/4	1/4					1/4			1/4		1/4					1/4	1/2			1/4				

7
97 1/2 606 90 2

Milk & Creams served to Prince Regent's Household from 6 Nov. to 5 December 1834

	6	7	8	9	10	11	12	13	14	15	16	17	18	19	20	21
Coffee Room																
Milk Lbs	10	10	10	9 1/2	9 1/2	9 1/2	9 1/2	9 1/2	9 1/2	9 1/2	9 1/2	10 1/2	9 1/2	9 1/2	9 1/2	10
Cream Pints	3	3	3	3	3	4	4	4	4	4	4	4	4	4	4	4

December

	22	23	24	25	26	27	28	29	30	1	2	3	4	5
Milk Lbs	10	10	10	10	10	11	10 1/2	11	11 1/2	11 1/2	11 1/2	11 1/2	11 1/2	11 1/2
Cream Pints	4	4	4	4	4	4	4	4	4	4	4	4	4	4

White Cream
30 6 1/2
11 5

Confectionary as above by Druffitt

	6	7	8	9	10	11	12	13	14	15	16	17	18	19	20	21
Milk Lbs																
Cream Pints	3/4	3/4	3/4	3/4	3/4	3/4	3/4	3/4	3/4	1/2	3/4	3/4	3/4	3/4	3/4	
Abt																1

	22	23	24	25	26	27	28	29	30	1	2	3	4	5
Cream Pints	3/4	3/4	3/4	3/4	3/4	3/4	3/4	3/4	3/4	3/4	3/4	3/4	3/4	3/4

Cream Dble Cream
22 3/4
1

Butter Eggs served as above by Steph. Cullum

	6	7	8	9	10	11	12	13	14	15	16	17	18	19	20	21
Coffee Room																
Butter lb	3 1/2	8	3	3	4 1/2	3	3	3	8	3 1/2	4	4 1/2	3	3	9	
Patts	36	60	30	54	50	30	30	80	30	30	54	30	30	60		
New laid Eggs	6	12			12	6	12		6		12	6	6			

	22	23	24	25	26	27	28	29	30	1	2	3	4	5
Butter lb	3	3	3	3 1/2	4	8			3 1/2	3	4	3	3 1/2	8
Patts	20	60	30	30	60	60			60	30	30	60	60	70
New laid Eggs	6		12	6	12	6				6	6	6	6	12

Butter Patts Eggs New laid Eggs
112 1/2
1164
156
12 1/2
2 1/4
125 1164 2 1/4 156

	6	7	8	9	10	11	12	13	14	15	16	17	18	19	20	21
Confectionary																
Butter lb	1/2	1	1/2	1	1/2	1	1/2	1/2	1/2	2						
Eggs Hund	1/4		1/4	1/4	1/4	1/4	1/4		1/4							

	22	23	24	25	26	27	28	29	30	1	2	3	4	5
Butter lb	1/2	1/2	1/2	1/2	1/2	1			1/2	1/2	1			
Eggs Hund	1/4									1/4	1/4			

Milk & Cream served to Prince Regent's Household from 6. Dec. to 5 Janry 1819 by Th^o Coombe

	6	7	8	9	10	11	12	13	14	15	16	17	18	19	20	21	22	23	24	25	26	27	28	29	30	31	1	2	3	4	5
Coffee Room Milk	11	11	11	11	11	7/2	7/2	2	1/2	1/2	1/2	1/2	1/2	1/2	1/2	2 1/2	5	6	8 1/2	5 1/2	2 1/2	2	2	2	2	1 1/2	1 1/2	1 1/2	1 1/2	1 1/2	
Cream Pints	4	4	4	4	4	2	2	1 1/2	1 1/2	2	2 1/2	2	2	2 1/2	2	2 1/2	3	3	3	3	2	2 1/2	2	2	2	1 1/2	1 1/2	1 1/2	1 1/2	2	

Milk 126 1/2
 Cream 75

Confectionary Milk by G. Griffith
 Cream Pints 3/4 3/4 1/2 1/2 3/4 3/4 3/4

3/4

Butter & Eggs served as above by Th^o Cullum

	5	6	7	8	9	10	11	12	13	14	15	16	17	18	19	20	21	22	23	24	25	26	27	28	29	30	31	1	2	3	4	5
Coffee Room Butter lb	5	3	3	3	3 1/2	4	1 1/2	1	1 1/2	1	1	4	2	2 1/2	2	2	2	3	2	1	1	1	1	2	2	1	1					
Patts	36	30	30	30	15	24	12	12	12	12	12	24	24	36	36	12	30	36	30	3	12	12	12	18	36	12	12					
Eggs	12	6	6	6	6	6	6	6	6	6	6	6	6	6	6	6	6	6	6	6	6	6	6	6	6	6	6	6	6	6		

Butter 57
 Patts 508
 Eggs 108

Confectionary Butter 1 1/2 1/2 1/2 1

3 1/2
 60 1/2 588 108

Milk & Cream served to Prince Regent's Household from 6 Janry to 5 Feby 1819. by T. Comber

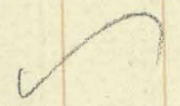
Coffee Room

	6	7	8	9	10	11	12	13	14	15	16	17	18	19	20	21	22	23	24	25	26	27	28	29	30	31	1	2	3	4	5
Milk Qu.	2	3	4	2	1 1/2	1 1/2	1 1/2	1 1/2	1 1/2	1 1/2	1 1/2	1 1/2	1 1/2	1 1/2	2	1 1/2	1 1/2	1 1/2	1 1/2	1 1/2	1 1/2	1 1/2	1 1/2	1 1/2	1 1/2	1 1/2	1 1/2	1 1/2	1 1/2	1 1/2	1 1/2
Cream Pints	2 1/2	2 1/2	2 1/2	1 1/2	1 1/2	1 1/2	1 1/2	1 1/2	1 1/2	1 1/2	1 1/2	1 1/2	1 1/2	1 1/2	2	1 1/2	1 1/2	1 1/2	1 1/2	1 1/2	1 1/2	1 1/2	1 1/2	1 1/2	1 1/2	1 1/2	1 1/2	1 1/2	1 1/2	1 1/2	

Milk Qu. Cream Pints

54 1/2

53 1/2



Butter & Eggs served as above by Steph. Cullem

Coffee Room

Butter lb	2	2	2	2	1	1	1	1	1	3	1	1	1	1	1	2	1	1	1	1	1	1	1	1	1	1	1	1	1	1	1
Patts	24	24	12	24	12	18	18	18	24	36	24	12	24	24	24	24	24	24	24	12	24	22	24	24	24	24	24	24	24	24	24
Eggs	6	6	6	6	6	6	6	6	6	6	6	6	6	6	6	6	6	6	6	6	6	6	6	6	6	6	6	6	6	6	6

Butt. Eggs

35

524

111



Confectionary

Milk & Cream served to Prince Regent's Household from 6th Febry to 5th March 1819 by Tho^r Coomber

Coffee Room

	6	7	8	9	10	11	12	13	14	15	16	17	18	19	20	21	22	23	24	25	26	27	28	1	2	3	4	5
Milk	2 1/2	2 1/2	2 1/2	2 1/2	2 1/2	2 1/2	2 1/2	2 1/2	2 1/2	2 1/2	2 1/2	2 1/2	2 1/2	2 1/2	2 1/2	2 1/2	2 1/2	2 1/2	2 1/2	2 1/2	2 1/2	2 1/2	2 1/2	2 1/2	2 1/2	2 1/2	2 1/2	2 1/2
Cream	1 1/2	1 1/2	1 1/2	1 1/2	1 1/2	1 1/2	1 1/2	1 1/2	1 1/2	1 1/2	1 1/2	1 1/2	1 1/2	1 1/2	1 1/2	1 1/2	1 1/2	1 1/2	1 1/2	1 1/2	1 1/2	1 1/2	1 1/2	1 1/2	1 1/2	1 1/2	1 1/2	1 1/2

Milk Cream

no. —
45



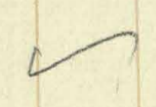
Butter & Eggs served as above by Steph^r Cullum

Coffee Room

Butter	2	1	2	2	2	1	2	1	1	1	1	1	2	1	1	1	1	1	1	1	1	1	1	1	1	1	1	1
Pats	10	24	48	24	24	24	24	18	12	12	12	48	24	12	12	12	24	24	18	12	12	12	12	12	12	12	12	12
Eggs	6	6	6	6	6	6	6	6	6	6	6	6	6	6	6	6	6	6	6	6	6	6	6	6	6	6	6	6

Butter Pats Eggs

32 1/2
438
84



Milk & Cream served to Prince Regent's Household from 6 March to 5 April 1819 by Tho: Cumber

	6	7	8	9	10	11	12	13	14	15	16	17	18	19	20	21	22	23	24	25	26	27	28	29	30	31	1	2	3	4	5
Milk Lvs	2	2	2	2	2	2	2	2	2	2	3	6	7	8	8	8 1/2	8	8	8	8	8	8	9	9 1/2	9 1/2	9	9 1/2	10	9 1/2	9 1/2	9 1/2
Cream Pints	1	1	1	1	1	1	1	1	1	1	2	3	3	3	3	3 1/2	3	3	3	3	3	3	3 1/2	3 1/2	3 1/2	3 1/2	3 1/2	3 1/2	3 1/2	3 1/2	

Milk
193 1/2
Cream
77

Duffell

Confectionary	Milk Lvs	Cream Pints	Blk Crm																											
	3/4	1/2	1/2	1/2	1/2	1/2	1/2	1/2	1/2	1/2	1/2	1/2	1/2	1/2	1/2	1/2	1/2	1/2	1/2	1/2	1/2	1/2	1/2	1/2	1/2	1/2	1/2	1/2	1/2	1/2

Milk
1
Cream
11
Blk Crm
1

Butter & Eggs served at above by Steph: Cullum

	6	7	8	9	10	11	12	13	14	15	16	17	18	19	20	21	22	23	24	25	26	27	28	29	30	31	1	2	3	4	5
Butter lb	2	1	1	1	1	1	2	1 1/2	3	3	3	3	7	3	3	4	3	4	3	3	7	3	3	3	3	4	4	4	7	3	
Palls	13	12	12	12	12	12	13	12	36	40	36	36	40	36	36	36	36	36	48	36	48	36	36	36	36	40	36	48	36	36	
Eggs	6	6				6		6	6	6	6	6	6	6	6	6	6	6	6	6	6	6	6	6	6	6	6	6	6	6	12

79 1/2
910
1380

Confectionary	Butter lb	Eggs	Sum																											
	1/2	1/2	1	1/2	1/2	1/2	1/2	1/2	1/2	1/2	1/2	1/2	1/2	1/2	1/2	1/2	1/2	1/2	1/2	1/2	1/2	1/2	1/2	1/2	1/2	1/2	1/2	1/2	1/2	1/2

6 1/2
86
910
1380
3 1/2

Milk & Cream served to Prince Regent's Household for 6 April to 5 May 1819 by

The Cooks

		6	7	8	9	10	11	12	13	14	15	16	17	18	19	20	21	22	23	24	25	26	27	28	29	30	1	2	3	4	5
Coffee Room	Milk	1/2	1/2	1/2	1/2	1/2	1/2	1/2	1/2	1/2	1/2	1/2	1/2	1/2	1/2	1/2	1/2	1/2	1/2	1/2	1/2	1/2	1/2	1/2	1/2	1/2	1/2	1/2	1/2	1/2	
	Cream	3/4	3/4	1	3/4	3/4	1	3/4	3/4	3/4	3/4	1/2	2	2	2	2	2	2	2	2	3/4	2	1/2	1/2	1/2	1/2	1/2	1/2	2	2	

Milk Di. Creams

159

73

Milk & Cream served as above by P. Griffith

Confectionary	Milk	1/2	1/2	1/2	1/2	1/2	1/2	1/2	1/2	1/2	1/2	1/2	1/2	1/2	1/2	1/2	1/2
	Cream	1/2	1/2	1/2	1/2	1/2	1/2	1/2	1/2	1/2	1/2	1/2	1/2	1/2	1/2	1/2	1/2

Milk Cream

1

5

Butter & Eggs served as above for by Steph. Cullem

		6	7	8	9	10	11	12	13	14	15	16	17	18	19	20	21	22	23	24	25	26	27	28	29	30	1	2	3	4	5
Coffee Room	Butter	3	3	3	3	4	3	3	3	3	1	2	1	1	1	1	1	1	3	1	1	1	1	1	1	2	1	1			
	Pats	52	36	36	36	40	40	40	36	36	24	24	24	24	24	24	24	24	24	24	24	24	24	24	24	24	24				
	Eggs	12	12	6	6	6	6	12	6	6	6	6	12	6	6	6	12	6	12	6	12	6	12	6	6	6	6				

Butter Pats full Eggs Egg hand

51

700

150

Confectionary	Butter	1	1/2	1/2	1	1/2	1/2	1/2	1/2
	Eggs	1/2	1/2	1/2	1/2	1/2	1/2	1/2	1/2

5

1/2

56 700 150 1/2

Milk & Cream served to Prince Regent's Household from 6th May to 5 June 1819

	6	7	8	9	10	11	12	13	14	15	16	17	18	19	20
Coffee Room															
Milk Qua ^r	2	2	2 1/2	2	3 1/2	2 1/2	2 1/2	3	5	10	9 1/2	10	10	10	10
Cream Pints	1 1/2	1 1/2	1 1/2	2	1 1/2	1 1/2	1 1/2	1 1/2	2 1/2	4	4	4	4	4	3 1/2

by Mr. Coomber

	21	22	23	24	25	26	27	28	29	30	31	1	2	3	4	5	
Milk Qua ^r	10	10	10	10	10	10	10	10	10	10	10	11	10 1/2	10	11	12	11
Cream Pints	3 1/2	4	3 1/2	3 1/2	4	4	4	3	3 1/2	4	4	4 1/2	3 1/2	4 1/2	5	5	

Milk
Qua^r

250

Cream
Pints

102

Milk & Cream served as above by J. Buffitt

Confectionary	Milk Qua ^r																
	Cream Pints																
	Other																

	1/2	1															
	1/2	1/2	1/2	1/2	1/2	1/2	3/4	1/2	1/2	1/2	1/2	1/2	1/2	1/2	1/2	1/2	1/2

Milk
Qua^r

4

Cream
Pints

11 3/4

Other
Pints

8

Butter & Eggs served by Messrs. Cullum

	6	7	8	9	10	11	12	13	14	15	16	17	18	19	20
Coffee Room															
Butter lb	2	1	3		1	1	1	1	3	6	2	3	3	3	3
Patts	12	24	28		26	12	17	28	48	72	36	36	12	40	48
Fresh Eggs		12				6		6	12						

	21	22	23	24	25	26	27	28	29	30	31	1	2	3	4	5
Butter lb	3	7 1/2		3	3	3 1/2	3	3	7 1/2		3 1/2	3	3	4	4	8
Patts	24	60		50	48	48	2	40	30		36	36	40	36	48	84
Fresh Eggs					6				12				6	6		12

Butter
lb

103

Patts

1023

Eggs
Fresh

78

Confectionary Butter & Eggs

	1/2	1/2	1														
	1/2																

	1/2	1															
	1/2	1/2	1/2	1/2	1/2	1											

10

103

1023

2

78

Milk & Cream served to Prince Regent's Household from 6 June to 5 July 1819 by

		6	7	8	9	10	11	12	13	14	15	16	17	18	19	20	21
Coffee Room	Milk Qua'	10	10	10	10	9 1/2	7 1/2	9 1/2	10	10	10	11	10	11 1/2	8	10	14 1/2
	Cream Pints	5	4 1/2	3 1/2	3 1/2	3	2 1/2	3	4 1/2	4 1/2	3 1/2	4	4	20	4 1/2	5	23

Thos. Coomber

		22	23	24	25	26	27	28	29	30	1	2	3	4	5	
	Milk Qua'	10	8 1/2	10	10	10	10	10	10	9 1/2	9 1/2	9 1/2	9 1/2	10	10	10
	Cream Pints	4 1/2	4 1/2	4 1/2	4 1/2	4 1/2	5	4 1/2	4	4	4	4	4 1/2	5	5	4 1/2

Milk. Cream
301.
--- 161. ✓

Milk & Cream served as above by J. Pruffitt

		6	7	8	9	10	11	12	13	14	15	16	17	18	19	20	21
Confectionary	Milk Qua'	1	1/2	1/2	1/2	1	1 1/2	1/2	1/2	1/2	1/2	1/2	1/2	1/2	1/2	1/2	1/2
	Cream Pints	2 1/2	1/2	1/2	1/2	1/2	1/2	1	1/2	1/2	1/2	1/2	13	1/2	1/2	12	1/2
	Stk								1	2						4	

		22	23	24	25	26	27	28	29	30	1	2	3	4	5		
	Milk Qua'	1	1	1/2	1	1	1/2	1	1	1/2	1/2						
	Cream Pints	1/2	1/2	1/2	1/2	1/2	1/2	1/2	1/2	1	1	1/2	1/2	1/2	1/2	1/2	1/2
	Stk															1	

Milk Cream Stk
Qua' Pints Pints
12 1/2
43 1/2
8

Butter & Eggs served as above by Steph. Cullum

		6	7	8	9	10	11	12	13	14	15	16	17	18	19	20
Coffee Room	Butter Lt	3 1/2	3	3 1/2	3	3	6	4	4	4	4	4	4	8 1/2	5	
	Patts	36	36	36	24	36	36	36	52	36	36	36	48	60		
	Fresh Eggs	6	6	12	6	12		6	6						12	

		21	22	23	24	25	26	27	28	29	30	1	2	3	4	5
	Butter Lt	4	3	3	3 1/2	8	4	5	4	4	4	3 1/2	8			4
	Patts	36	24	36	36	72	36	36	36	36	36	72				36
	Fresh Eggs			12	12		12	12				12				12

Butter Patts New Eggs
Lt
100 1/2
1000.
138.

Confectionary	Butter Lt	1/2	1/2	1/2	1/2	1		1/2	1/2	1/2	1/2	1					
	Eggs	1/2		1/2				1/2	3/4	1/2	1/2						

		21	22	23	24	25	26	27	28	29	30	1	2	3	4	5
	Butter Lt	1/2	1/2			1				1/2	1/2	1				
	Eggs	1/2								1/2	1/2	1/2				

10
119 1/2 1000. 138 3/4

Milk & Cream served to Prince Regent's Household from 6 July to 5 Aug^r 1819.

		6	7	8	9	10	11	12	13	14	15	16	17	18	19	20
Coffee Room	Milk Lun	10	10	10	10	10	10	10	10	10 ^{1/2}	10 ^{1/2}	10 ^{1/2}	10	10	10	10 ^{1/2}
	Cream Pints	4 ^{1/2}	5 ^{1/2}	5 ^{1/2}	5 ^{1/2}	5 ^{1/2}	5 ^{1/2}	5	6	6	30	6	6	6	6 ^{1/2}	7

by Tho^s Coombe

21	22	23	24	25	26	27	28	29	30	31	1	2	3	4	5	
10	10	10	10	10	10 ^{1/2}	10	10	10	10	10	10	10	10	10	10 ^{1/2}	9 ^{1/2}
6	6	6	6	6	6	6	6	6	6	6	6	6	6	6	6 ^{1/2}	6

310

206^{1/2}

Confectionary	Milk Lun	1							1 ^{1/2}	1 ^{1/2}	1 ^{1/2}	1	1 ^{1/2}	1 ^{1/2}	1	1 ^{1/2}
	Cream Pints	1/2	1/2	1/2	1	1/2	1/2	1	4 ^{1/2}	1/2	1/2	1/2	1/2	1/2	1/2	1/2
	Salt		1 ^{1/2}	1 ^{1/2}	1 ^{1/2}	1	1	1	20							

Milk Lun 8.
Cream 6^{3/4}
Salt Cream 25^{1/2}

Butter & Eggs served as above served by Steph^s Cullum

		6	7	8	9	10	11	12	13	14	15	16	17	18	19	20
Coffee Room	Butter lb	5 ^{1/2}	4 ^{1/2}	3 ^{1/2}	4 ^{1/2}	8 ^{1/2}	4 ^{1/2}	3 ^{1/2}	4 ^{1/2}	3 ^{1/2}	4 ^{1/2}	9	4 ^{1/2}	4 ^{1/2}		
	Patts	10	36	36	72		36	36	12	36	36	72	36	36		
	Fresh Eggs		12	12			12	12			12	12				

21	22	23	24	25	26	27	28	29	30	31	1	2	3	4	5
4 ^{1/2}	3 ^{1/2}	4 ^{1/2}	8 ^{1/2}	3 ^{1/2}	3 ^{1/2}	4 ^{1/2}	4 ^{1/2}	4 ^{1/2}	8 ^{1/2}	4 ^{1/2}	4 ^{1/2}	4 ^{1/2}	4 ^{1/2}		
36	36	36	72	36	36	36	36	72	36	36	36	14			
12	12			12	12			12	12					12	6

Butter 129^{1/4}
Patts 1036
Eggs 162
Fresh Eggs 15^{1/4}
4
144^{1/2} 1036 4 162

Confectionary	Butter lb	1/2	1/2	1	1/2	1	1	1 ^{1/2}	1	1/2	1/2					
	Eggs	1/2	1/2	1	1	1 ^{1/2}										

1	1/2	1	1/2	1/2	1/2	1/2	1	1	1/2	1/2	1				
1/2	1/2			1/2	1/2	1/2	1/2	1/2	1/2						

Milk & Cream served to Prince Regent's Household from 11 Octob to 5 Nov 1819 by

Coomber

	11	12	13	14	15	16	17	18	19	20	21	22	23	24	25	26
Coffee Room Milk	9	9	9	7	2 1/2	2 1/2	2 1/2	2	2	2	2	2	2	2	2	2
Coffee Room Cream	3 1/2	3 1/2	3 1/2	3 1/2	2	2	2	2	2	2	2	2	2	2	2	2

	27	28	29	30	31	1	2	3	4	5
Milk	2	2	1 1/2	3 1/2	3	3	4	2 1/2	2 1/2	2 1/2
Cream	2	2	2 1/2	3 1/2	2	2	2	2	2	2

Milk 91
Cream 60

Milk & Cream served as above by Truitt

Confectionary Milk						
Cream	1/2	1/2	1/2	1/2	1/2	1/2

Bulk 2 3/4
Cream

Butter & Eggs served to Prince Regent's Household as above by A. Cullum

	11	12	13	14	15	16	17	18	19	20	21	22	23	24	25	26
Coffee Room Butter	2 1/2	2 1/2	2 1/2	2 1/2	1 1/2	4	2 1/2	1 1/2	1 1/2	1 1/2	3	1 1/2	2 1/2	1 1/2	1 1/2	1 1/2
Coffee Room Patts	36	36	36	36	24	24	24	24	24	24	24	24	24	24	24	24
Coffee Room Fresh Eggs	12	12	12	12	12	12	12	12	12	12	12	12	12	12	12	12

	27	28	29	30	31	1	2	3	4	5
Butter	1 1/2	2 1/2	2 1/2	3	2 1/2	2 1/2	1 1/2	1 1/2	1 1/2	2 1/2
Patts	24	36	72	24	24	24	24	24	24	24
Fresh Eggs	12	6	12	12	12	12	12	12	12	12

Bulk 5 1/2
Patts 504
Fresh Eggs 126

Confectionary Butter				
Eggs	1/2	1/2	1/2	1

1/2 1/2
1/2

3 1/2
5 1/4 504 126 3/4

Milk & Cream served to Prince Regent's Household from 6 Nov. to 5 Decemb. 1819

by Coomber

		6	7	8	9	10	11	12	13	14	15	16	17	18	19	20	21	22	23	24	25	26	27	28	29	30	31	1	2	3	4	5
Coffee Room	Milk Linc	3/4	7	7	7	2 1/2	3 1/2	3	3	2	2	3	3	5 1/2	4	8 1/2	8 1/2	9	9 1/2	9 1/2	9 1/2	9 1/2	9 1/2	9 1/2	4	3	4	6	7	7	7	
	Cream Pats	2 1/2	3 1/2	3 1/2	3	2 1/2	2	2	2	2	2	2	2	2	3 1/2	4 1/2	4 1/2	4 1/2	4 1/2	4 1/2	4 1/2	4 1/2	4 1/2	4 1/2	2	1 1/2	2	2	3	4	4	

Milk 2^d Cream 1st
1000
96.

Milk & Cream served at above by J. Truffitt

		6	7	8	9	10	11	12	13	14	15	16	17	18	19	20	21	22	23	24	25	26	27	28	29	30	31	1	2	3	4	5
Confectionary	Milk Linc	1				1												1														
	Cream Pats	1/4	1/4	1/4	1/4	1/4	1/4	1/4	1/4	1/4	1/4	1/4	1/4	1/4	1/4	1/4	1/4	1/4	1/4	1/4	1/4	1/4	1/4	1/4	1/4	1/4	1/4	1/4	1/4	1/4	1/4	
	Other																															

Milk Cream Milk Cream
3.
7 1/2

Butter & Eggs served at above by Steph^m Cullum

		6	7	8	9	10	11	12	13	14	15	16	17	18	19	20	21	22	23	24	25	26	27	28	29	30	31	1	2	3	4	5
Coffee Room	Butter W	5	2 3/4	2 3/4	1 3/4	1 1/4	1 3/4	3 1/2	2 3/4	2	1 1/4	2 3/4	2 1/4	5	2 3/4	3 1/4	4 3/4	3 3/4	3 1/4	5	1 1/4	1 3/4	1 1/4	3 3/4	3 1/4	4 1/2						
	Pats	72	36	36	24	24	24	24	24	24	24	24	24	24	24	24	24	36	36	72	36	36	72	36	36	72	36					
	Fresh Eggs	12	12			12	12					24		12	12			12	12								12	12				

Butter Pats Eggs
73 1/2
1020
144

Confectionary	Butter W	1/2	1/2	1/2										1/2	1/2	1/2	1/2	1/2	1/2	1/2	1/2	1/2	1/2	1/2	1/2	1/2	1/2	1/2	1/2	1/2
	Eggs	1/4	1/4	1/4										1/4	1/4	1/4	1/4	1/4	1/4	1/4	1/4	1/4	1/4	1/4	1/4	1/4	1/4	1/4	1/4	1/4

7.
1 1/4
80 1/2 1020 1 1/4 144

Milk & Cream served to Prince Regent's Household from 6 Dec. to 5 Jan'y 1820 by Tho Chamber

	6	7	8	9	10	11	12	13	14	15	16	17	18	19	20	21	22	23	24	25	26	27	28	29	30	31	1	2	3	4	5
Coffee Room Milk Lini	9	9	9 1/2	10 1/2	9	6	5	7	7	6 1/2	7	9	8	8 1/2	8 1/2	8 1/2	7 1/2	11 1/2	2 1/2	3	5	9	7 1/2	7 1/2	5	4	4	6	5		
Coffee Room Cream	4	4	4	4	4	2	1 1/2	2	3	3 1/2	3 1/2	3 1/2	3 1/2	3 1/2	3 1/2	3 1/2	3 1/2	2	2	2	2	2	2	3 1/2	3 1/2	3 1/2	2	2	2	2	2

Milk 214
Cream 92

Milk & Cream served as above by Druffitt

	6	7	8	9	10	11	12	13	14	15	16	17	18	19	20	21	22	23	24	25	26	27	28	29	30	31	1	2	3	4	5
Confectionary Milk Lini	1																														
Confectionary Cream	1/2	1/2	1/2	1/2	1/2	1/2	1/2	1/2	1/2	1/2	1/2	1/2	1/2	1/2	1/2	1/2	1/2	1/2	1/2	1/2	1/2	1/2	1/2	1/2	1/2	1/2	1/2	1/2	1/2	1/2	1/2

Milk 2
Cream 7 1/2

Butter & Eggs served as above by Steph. Culham

	6	7	8	9	10	11	12	13	14	15	16	17	18	19	20	21	22	23	24	25	26	27	28	29	30	31	1	2	3	4	5
Coffee Room Butter	3 1/2	3 1/2	3 1/2	3 1/2	3 1/2	2 1/2	2 1/2	2 1/2	3 1/2	4 1/2	3 1/2	4 1/2	2	2 1/2	3 1/2	2 1/2	3 1/2	3 1/2	4 1/2	1 3/4	3 1/2	2 1/2	2 1/2	2 1/2	3 1/2	2 1/2	2 1/2	2 1/2	2 1/2	2 1/2	
Coffee Room Gall	48	48	48	48	48	48	36	36	36	36	36	72	36	36	36	36	36	36	36	36	36	48	24	48	24	24	24	24	24	24	
Coffee Room Fresh Eggs					12		12		12		12		12		12		12		12		12		12		12		12		6	12	

Butter 82 1/2
Gall 996
Fresh Eggs 122

Confectionary

	6	7	8	9	10	11	12	13	14	15	16	17	18	19	20	21	22	23	24	25	26	27	28	29	30	31	1	2	3	4	5
Confectionary Butter	1/2	1/2	1/2	1/2	1/2	1/2	1/2	1/2	1/2	1/2	1/2	1/2	1/2	1/2	1/2	1/2	1	1/2	1/2	1/2	1/2	1/2	1/2	1/2	1/2	1/2	1/2	1/2	1/2	1/2	
Confectionary Eggs					1/2		1/2		1/2		1/2		1/2		1/2		1/2		1/2		1/2		1/2		1/2		1/2		1/2	1/4	

Butter 9 1/2
Eggs 122
1/4

Milk & Cream served to Prince Regent's Household from 6th Janry to 5th Febr'y 1820 by J Coomber

	6	7	8	9	10	11	12	13	14	15	16	17	18	19	20	21	22	23	24	25	26	27	28	29	30	31	1	2	3	4	5	
Coffee Room																																
Milk Qu	6	8	8 1/2	8 1/2	7 1/2	7 1/2	7	6 1/2	7	11	5	4	4	4	4	5	8	9	9	9	9	9	11	9	12 1/2	11 1/2	12 1/2	11 1/2	10 1/2	10 1/2	9 1/2	
Cream Pints	2	3 1/2	3 1/2	3 1/2	3 1/2	3 1/2	3 1/2	3 1/2	3 1/2	2	2	1 1/2	1 1/2	1 1/2	1 1/2	2	3 1/2	3 1/2	3 1/2	3 1/2	3 1/2	3	3	3 1/2	3 1/2	3 1/2	3 1/2	3 1/2	3 1/2	3 1/2		

Milk Cream
248.
107 1/2 ✓

Milk & Cream served as above by Druffitt

Confectionary Milk Qu																																
Cream Pints	1/2	3/4	1/2	1/2	1/2	1/2	1/2	1/2	1/2	1/2	1/2	1/2	1/2	1/2	1/2	1/2	1/2	1/2	1/2	1/2	1/2	1/2	1/2	1/2	1/2	1/2	1/2	1/2	1/2	1/2	1/2	
Sble																																

Milk Cream Dbl Cream
2 1/2
7 1/2
1/2 ✓

Butter & Eggs served as above by Steph Culham

	6	7	8	9	10	11	12	13	14	15	16	17	18	19	20	21	22	23	24	25	26	27	28	29	30	31	1	2	3	4	5	
Coffee Room																																
Butter Lt	2 1/2	3 1/2	4 1/2	3 1/2	3 1/2	2 1/2	2 1/2	2 1/2	3 1/2	2 1/2	1 1/2	1 1/2	1 1/2	1 1/2	1 1/2	1 1/2	2 1/2	2 1/2	2 1/2	2 1/2	2 1/2	2 1/2	2 1/2	2 1/2	2 1/2	2 1/2	2 1/2	2 1/2	2 1/2	2 1/2		
Patts	48	36	72	36	36	36	36	36	36	26	24	24	24	24	24	24	36	36	36	36	84	86	72	60	60	60	60	48	48	48	48	
Fresh Eggs		12			6		6	12		6							6	12			12							12	12	12	12	

Butter Patts Eggs Fresh Eggs
96 3/4
1214
138 ✓

Confectionary

Butter Lt	2 1/2	1	1																												
Eggs	1/2	1/2	1/2																												

8 1/2
1 1/2
103 1/2 1214 1 1/2 138 ✓

Milk & Cream served to His Majesty's Household from 6 Febry to 5 March 1820 by

Coomber

Coffee Room

Milk	Quarts	10	10	10 1/2	10	10 1/2	11 1/2	12	12 1/2	13	13 1/2	14	14 1/2	15	16	17	18	19	20	21	22	23	24	25	26	27	28	29	1	2	3	4	5	
Cream	Pints	5 1/2	5 1/2	5 1/2	5 1/2	5 1/2	5 1/2	5 1/2	5 1/2	5 1/2	5 1/2	5 1/2	5 1/2	5 1/2	5 1/2	5 1/2	5 1/2	5 1/2	5 1/2	5 1/2	5 1/2	5 1/2	5 1/2	5 1/2	5 1/2	5 1/2	5 1/2	5 1/2	5 1/2	5 1/2	5 1/2	5 1/2	5 1/2	5 1/2

Milk & Cream
237
150

Milk & Cream served as above by Truffitt

Confectionary Milk	Quarts	1/2	1/2	1/2	1/2	1/2	1/2	1	2	1/2	1/2	1	1/2	1/2	1/2	1/2	1/2	1/2	1/2	1/2	1/2	1/2	1/2	1/2	1/2	1/2	1/2	1/2	1/2	1/2	1/2	1/2	1/2		
Cream	Pints	1/4	1/4	1/4	1/4	1/4	1/4	1/4	1/4	1/4	1/4	1/4	1/4	1/4	1/4	1/4	1/4	1/4	1/4	1/4	1/4	1/4	1/4	1/4	1/4	1/4	1/4	1/4	1/4	1/4	1/4	1/4	1/4	1/4	
Other																																			

Milk & Cream
8 1/2
15

Butter & Eggs served as above by Stephⁿ Cullum

Coffee Room

Butter	2	5 1/2	5 1/2	5 1/2	5 1/2	5 1/2	5 1/2	5 1/2	5 1/2	5 1/2	5 1/2	5 1/2	5 1/2	5 1/2	5 1/2	5 1/2	5 1/2	5 1/2	5 1/2	5 1/2	5 1/2	5 1/2	5 1/2	5 1/2	5 1/2	5 1/2	5 1/2	5 1/2	5 1/2	5 1/2	5 1/2	5 1/2	5 1/2	5 1/2	
Pails	60	60	60	60	60	60	60	60	60	60	60	60	60	60	60	60	60	60	60	60	60	60	60	60	60	60	60	60	60	60	60	60	60	60	60
Fresh Eggs	12	12	12	12	12	12	12	12	12	12	12	12	12	12	12	12	12	12	12	12	12	12	12	12	12	12	12	12	12	12	12	12	12	12	12

Butter
125 1/2
119 1/4
210

Confectionary

Butter	1/2	1/2	1/2	1/2	1/2	1/2	1/2	1	1/2	1/2	1/2	1/2	1/2	1/2	1/2	1/2	1/2	1/2	1/2	1/2	1/2	1/2	1/2	1/2	1/2	1/2	1/2	1/2	1/2	1/2	1/2	1/2	1/2	1/2		
Egg Hand																																				

10
135 1/2
119 1/4
210
1 1/2

Milk & Cream served to His Majesty's Household from the 6th April to 5th May 1820 by Thos Coomber

Coffee Room

Milk Quarts	2 1/2	5	4	2	1 1/2	1 1/2	1 1/2	1 1/2	2 1/2	2	2	2	2	4	6	8 1/2	6 1/2	5 1/2	6 1/2	8 1/2	7 1/2	6 1/2	7 1/2	7 1/2	7 1/2	8 1/2	8 1/2	8 1/2	8 1/2	8 1/2
Cream Pints	1 1/2	1 1/2	3 1/2	1 1/2	1 1/2	1 1/2	1 1/2	1 1/2	1 1/2	1 1/2	1 1/2	1 1/2	1 1/2	2	3 1/2	4	4	2 1/2	2 1/2	5 1/2	5 1/2	5 1/2	5 1/2	5 1/2	5 1/2	5 1/2	5 1/2	5 1/2	5 1/2	5 1/2

Milk Quarts Cream Pints

154 1/2
100 1/2

Milk & Cream served as above by J. Truffitt

Confectionary

Milk Quarts	1	1/2	1/2	1/2	1/2	1/2	1/2	1/2	1/2	1/2	1/2	1/2	1/2	1/2	1/2	1/2	1/2	1/2	1/2	1/2	1/2	1/2	1/2	1/2	1/2	1/2	1/2	1/2	1/2	1/2
Cream Pints					1/2	1/2	1/2	1/2	1/2	1/2	1/2	1/2	1/2	1/2	1/2	1/2	1/2	1/2	1/2	1/2	1/2	1/2	1/2	1/2	1/2	1/2	1/2	1/2	1/2	1/2
Sugar																														

Milk Quarts Cream Pints Sugar

15
10 1/2
2 1/2

Butter & Eggs served as above by Stephⁿ Cullum

Coffee Room

Butter lb	2 1/4	3 1/4	3 1/2	1 1/2	1 1/2	2 1/4	1 1/2	1 1/2	3 1/4	1 1/2	1 1/2	2	4 1/2	8 1/2	6	3 3/4	4 1/4	3 1/2	4 1/2	4 1/2	4 1/2	5 1/2	5 1/2	4 1/2	4 1/2	4 1/2	4 1/2	4 1/2	4 1/2	
Puffs	36	24	36	24	24	24	24	18	24	24	24	36	48	48	48	42	25	48	48	39	78	39	39	39	39	39	39	39	39	39
Fresh Eggs	6	6	12	12	6	12	6	6	6	6	6	6	6	12	12	12	12	12	12	12	12	12	12	12	12	12	12	12	12	12

Butter Puffs Fresh Eggs Eggsbound

94 3/4
800
106

Confectionary

Butter lb	1/2	1/2	1/2	1/2	1/2	1/2	1/2	1/2	1/2	1/2	1/2	1/2	1/2	1/2	1/2	1/2	1/2	1/2	1/2	1/2	1/2	1/2	1/2	1/2	1/2	1/2	1/2	1/2	1/2	1/2
Eggs	1/2	1/2	1/2	1/2	1/2	1/2	1/2	1/2	1/2	1/2	1/2	1/2	1/2	1/2	1/2	1/2	1/2	1/2	1/2	1/2	1/2	1/2	1/2	1/2	1/2	1/2	1/2	1/2	1/2	1/2

9 1/2
106 1/4
800
106
13 1/2

Milk & Cream served to His Majesty's Household from 6 June to 5 July 1820

by J. Coomber

	6	7	8	9	10	11	12	13	14	15	16	17	18	19	20	21	22	23	24	25	26	27	28	29	30	1	2	3	4	5
Coffee Room																														
Milk Lun	6 1/2	8 1/2	8 1/2	7 1/2	8 1/2	7 1/2	7 1/2	8 1/2	8 1/2	8 1/2	7 1/2	8 1/2	8 1/2	8 1/2	8 1/2	8 1/2	8 1/2	8 1/2	8 1/2	9 1/2	8 1/2	8 1/2	9	9	8 1/2	8 1/2	8 1/2	8 1/2	8 1/2	
Cream Pints	3	5 1/2	5 1/2	5	5	5 1/2	5 1/2	5 1/2	5 1/2	5 1/2	5 1/2	5 1/2	5 1/2	5 1/2	5 1/2	5 1/2	5 1/2	5 1/2	5 1/2	5 1/2	5 1/2	5 1/2	5 1/2	5 1/2	5 1/2	5 1/2	5 1/2	5 1/2	5 1/2	

Milk Cream
 225 1
 161 1/2 161 1/2

Milk & Cream served as above by P. Pruffitt Confectionary

Milk Lun	1/2	1/2	1/2	1/2	1/2	1/2	1/2	1/2	1/2	1/2	1/2	1/2	1/2	1/2	1/2	1/2	1/2	1	1	1	1	1	1	1	1	1	1	1	1
Cream Pints	1/2	1/2	1/2	1/2	1/2	1	2	1/2	1 1/2	1	1/2	1/2	1/2	1/2	1/2	1/2	1/2	1/2	1/2	1/2	1/2	1/2	1/2	1/2	1/2	1/2	1/2	1/2	1/2
Sble "																													

Milk Cream Sble
 21 1/2 22 1/2
 20 1/2
 1

Butter & Eggs served as above by Stephⁿ Cullum

Coffee Room	Butter lb	3 1/2	4 1/2	5 1/2	4 1/2	4 1/2	4 1/2	4 1/2	4 1/2	4 1/2	4 1/2	4 1/2	4 1/2	4 1/2	4 1/2	4 1/2	4 1/2	4 1/2	4 1/2	4 1/2	4 1/2	4 1/2	4 1/2	4 1/2	4 1/2	4 1/2	4 1/2	4 1/2	4 1/2
	Pails	39	39	39	39	70	39	39	39	39	39	70	39	39	39	39	39	39	39	39	39	39	39	70	39	39	39	39	39
	Fresh Eggs	12	12	12	12	12	12	12	6	12	12	12	12	12	12	12	12	12	12	12	12	12	12	12	12	12	12	12	12

Butt Pails Eggs
 140 ✓
 1172 ✓
 220 ✓

Confectionary	Butter lb	1/2	1/2	1	1/2	1/2	1/2	1/2	1/2	1	1/2	1/2	1/2	1/2	1/2	1/2	1/2	1/2	1	1 1/2	1/2	1	1	1	1	1	1	1	1/2
	Eggs	1/2	1/2	1	1/2	1/2	1/2	1/2	1/2	1	1/2	1/2	1/2	1/2	1/2	1/2	1/2	1/2	1	1 1/2	1/2	1	1	1	1	1	1	1	1/2

14 3/4
 154 3/4 1172 228 2 1/2

A number of blank pages follow
and have not been photographed.

A number of blank pages follow
and have not been photographed.

